

Electronic supplementary material

Supplemental Figure

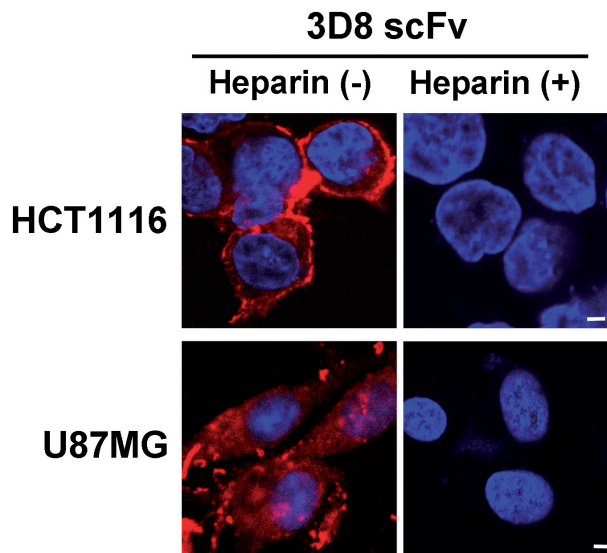


Figure S1. Inhibition of 3D8 scFv internalization by soluble heparin treatment in HCT1116 and U87MG cells. Cells were incubated with 3D8 scFv (10 μ M) for 2 h with or without pre-treatment of soluble heparin (100 IU/ml) for 30 min. Blue color depicts Hoechst 33342-stained nuclei. Scale bar, 5 μ m.