

Additional File 3:

The unintended consequences of inconsistent closure policies and mobility restrictions during epidemics

Benjamin M. Althouse^{1,2}, Brendan Wallace³, B. K. M. Case^{4,5}, Samuel V. Scarpino^{5,6,7,8,9}, Antoine Allard^{5,10,11}, Andrew M. Berdahl¹², Easton R. White^{13,14}, and Laurent Hébert-Dufresne^{4,5,10,*}

¹University of Washington, Seattle, WA 98105

²New Mexico State University, Las Cruces, NM 88003

³Department of Applied Mathematics, University of Washington, Seattle, WA 98195, USA

⁴Department of Computer Science, University of Vermont, Burlington, VT 05405, USA

⁵Vermont Complex Systems Center, University of Vermont, Burlington, VT 05405, USA

⁶Institute for Experiential AI, Northeastern University, Boston, Massachusetts, USA

⁷Department of Health Sciences, Northeastern University, Boston, MA, USA

⁸Khoury College of Computer Sciences, Northeastern University, Boston, MA, USA

⁹Santa Fe Institute, Santa Fe, NM, USA

¹⁰Département de physique, de génie physique et d'optique, Université Laval, Québec (Québec), Canada G1V 0A6

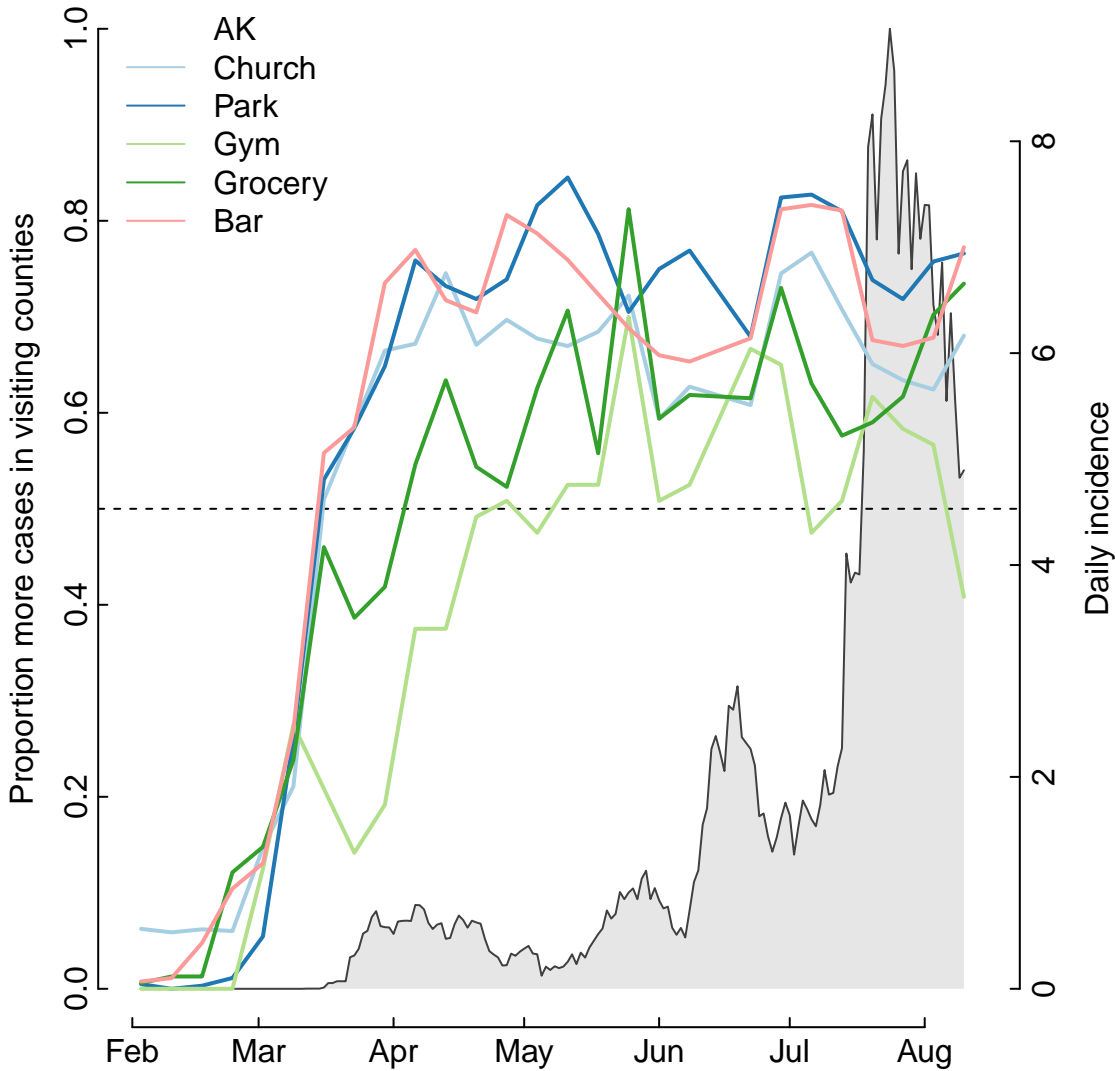
¹¹Centre interdisciplinaire en modélisation mathématique, Université Laval, Québec (Québec), Canada G1V 0A6

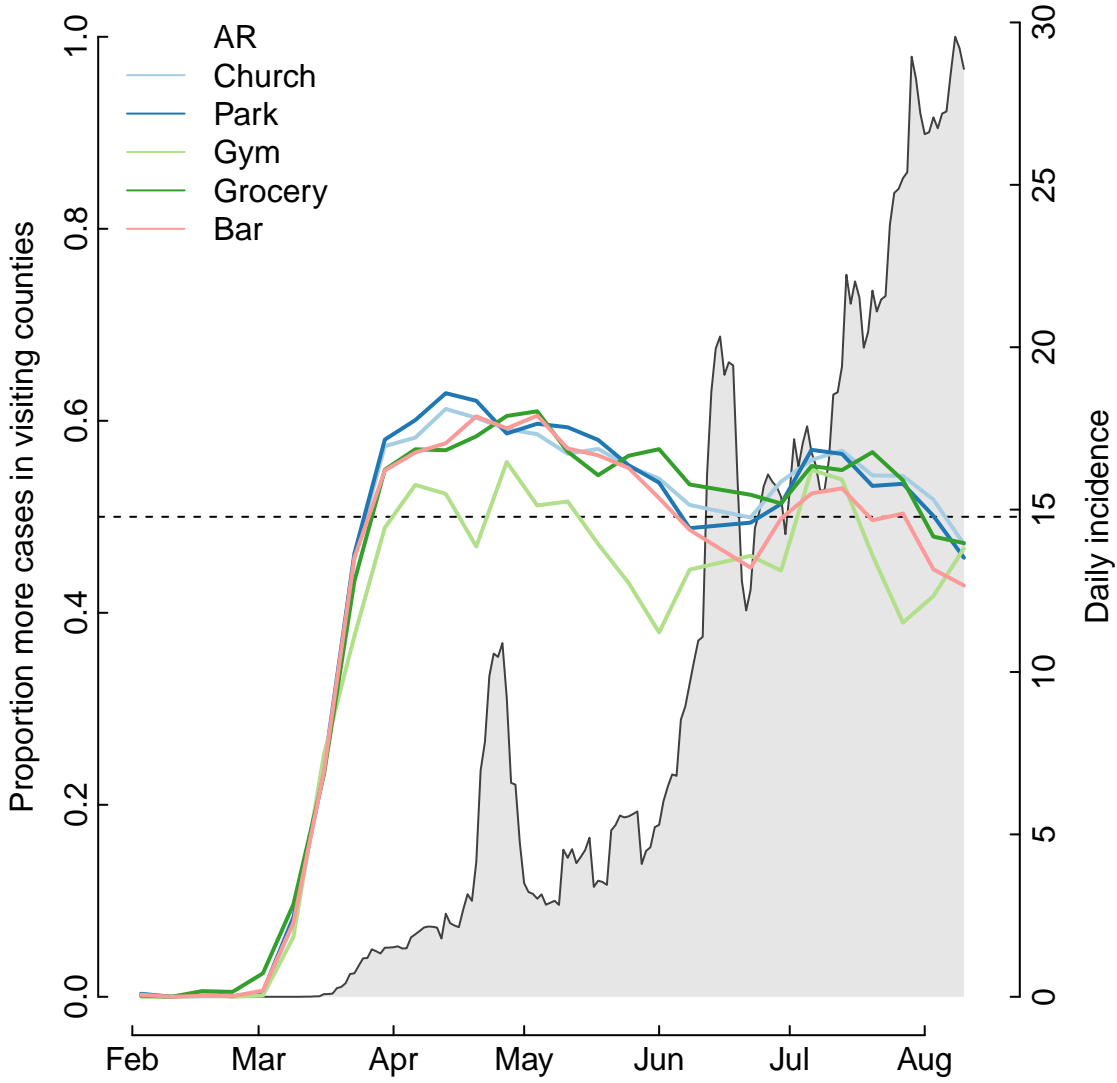
¹²School of Aquatic & Fishery Sciences, University of Washington, Seattle, WA 98195, USA

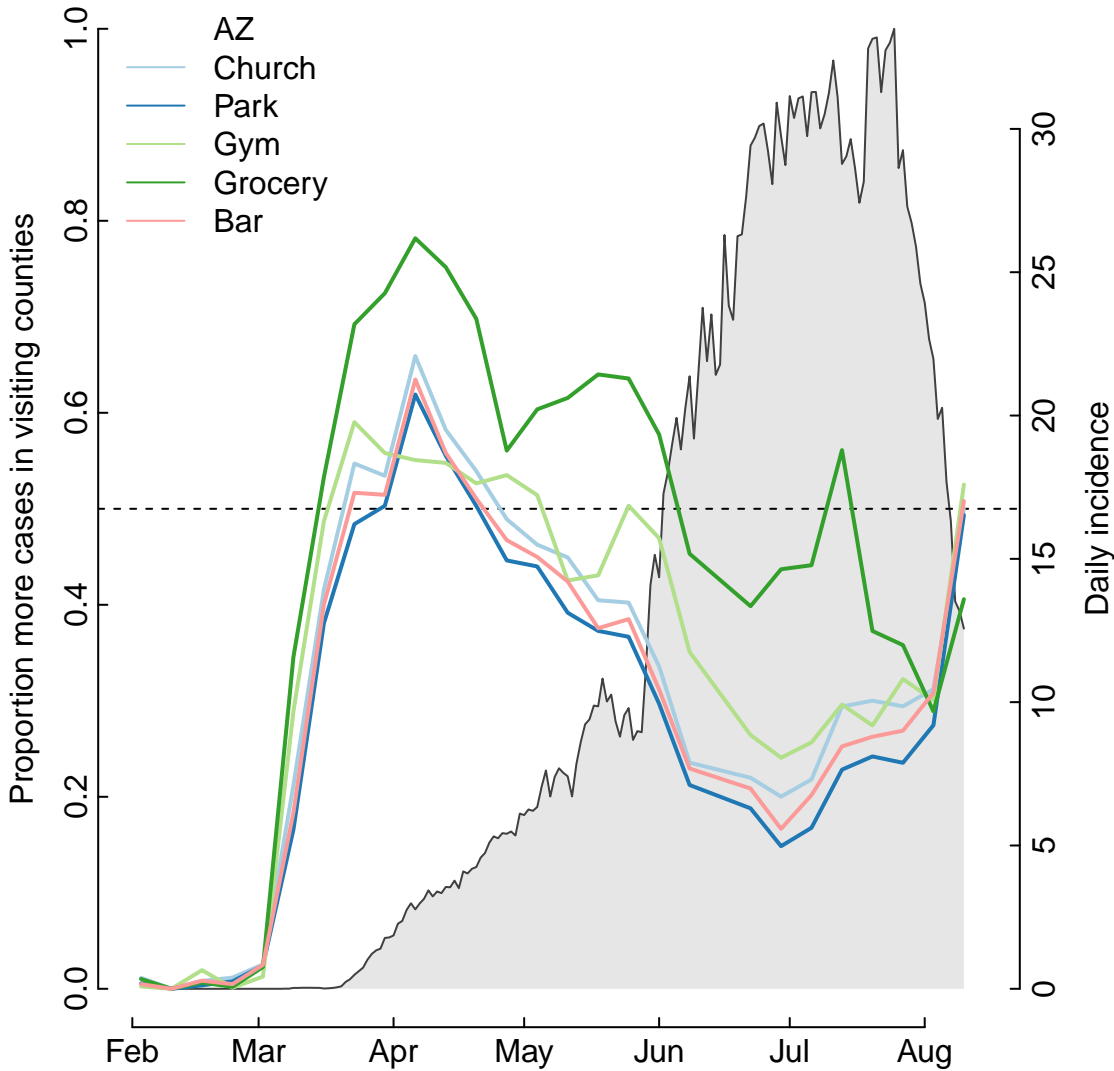
¹³Department of Biological Sciences, University of New Hampshire, Durham, NH, 03824, USA

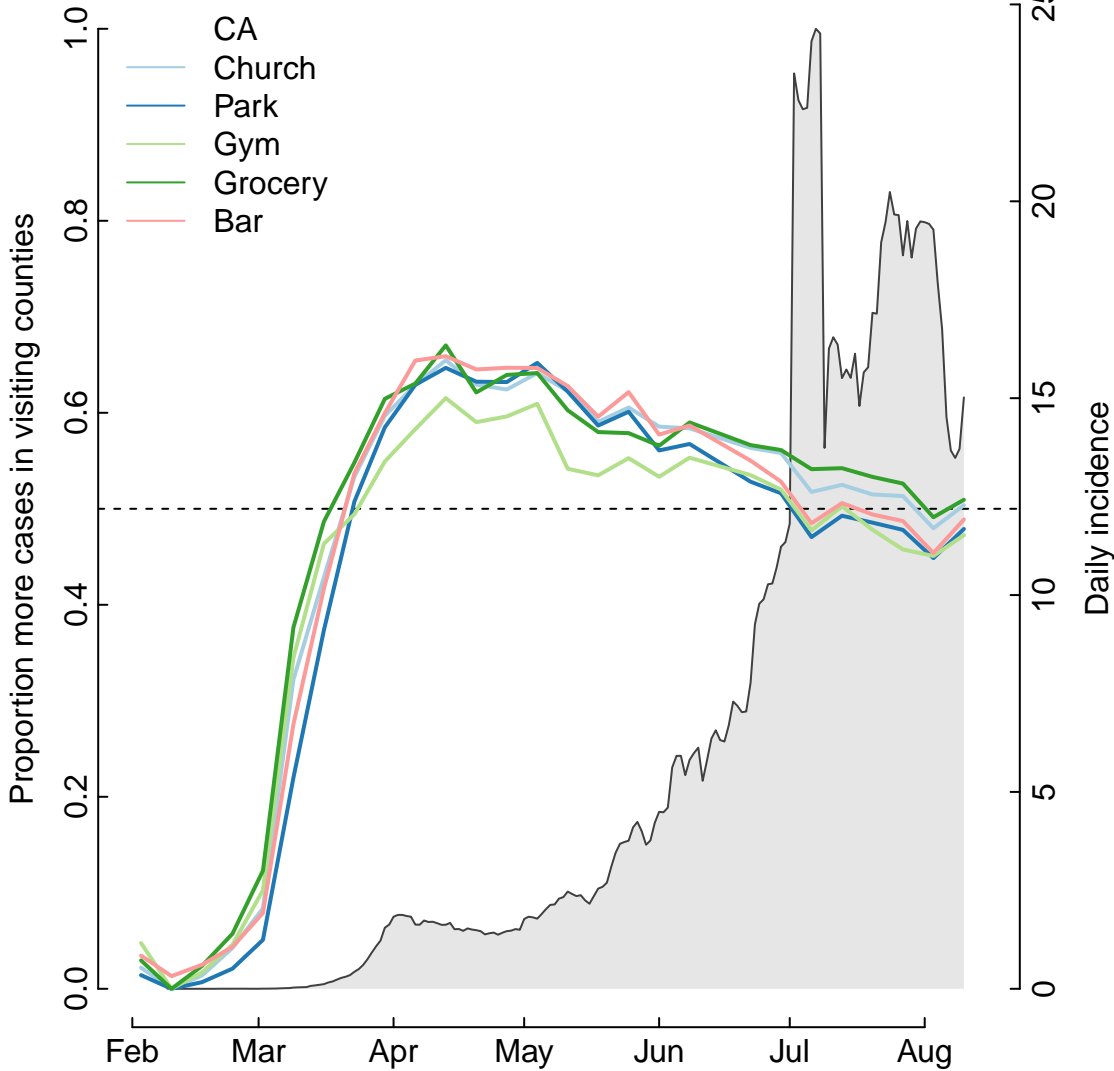
¹⁴Gund Institute for Environment, University of Vermont, Burlington, VT 05405, USA

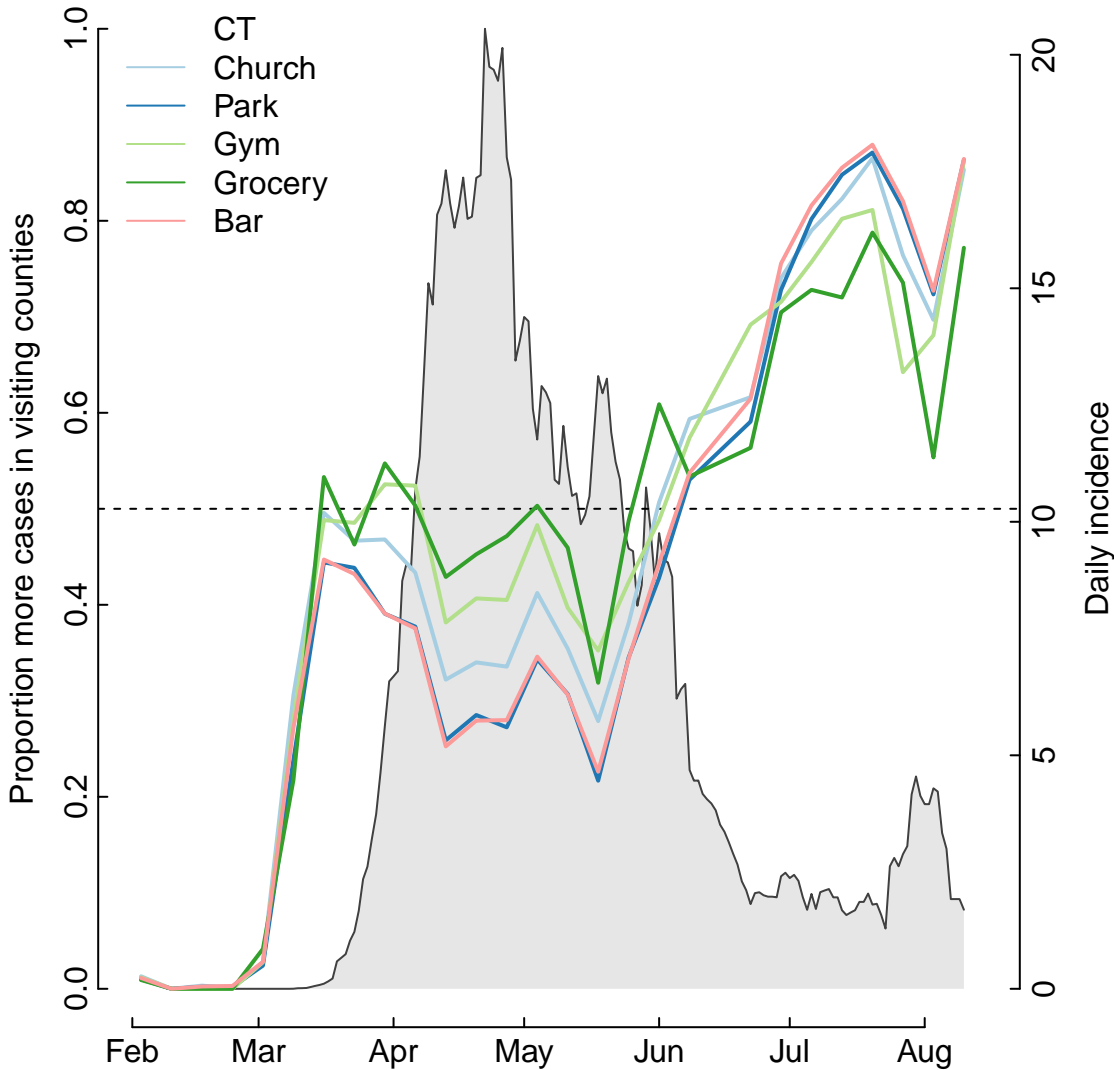
*laurent.hebert-dufresne@uvm.edu

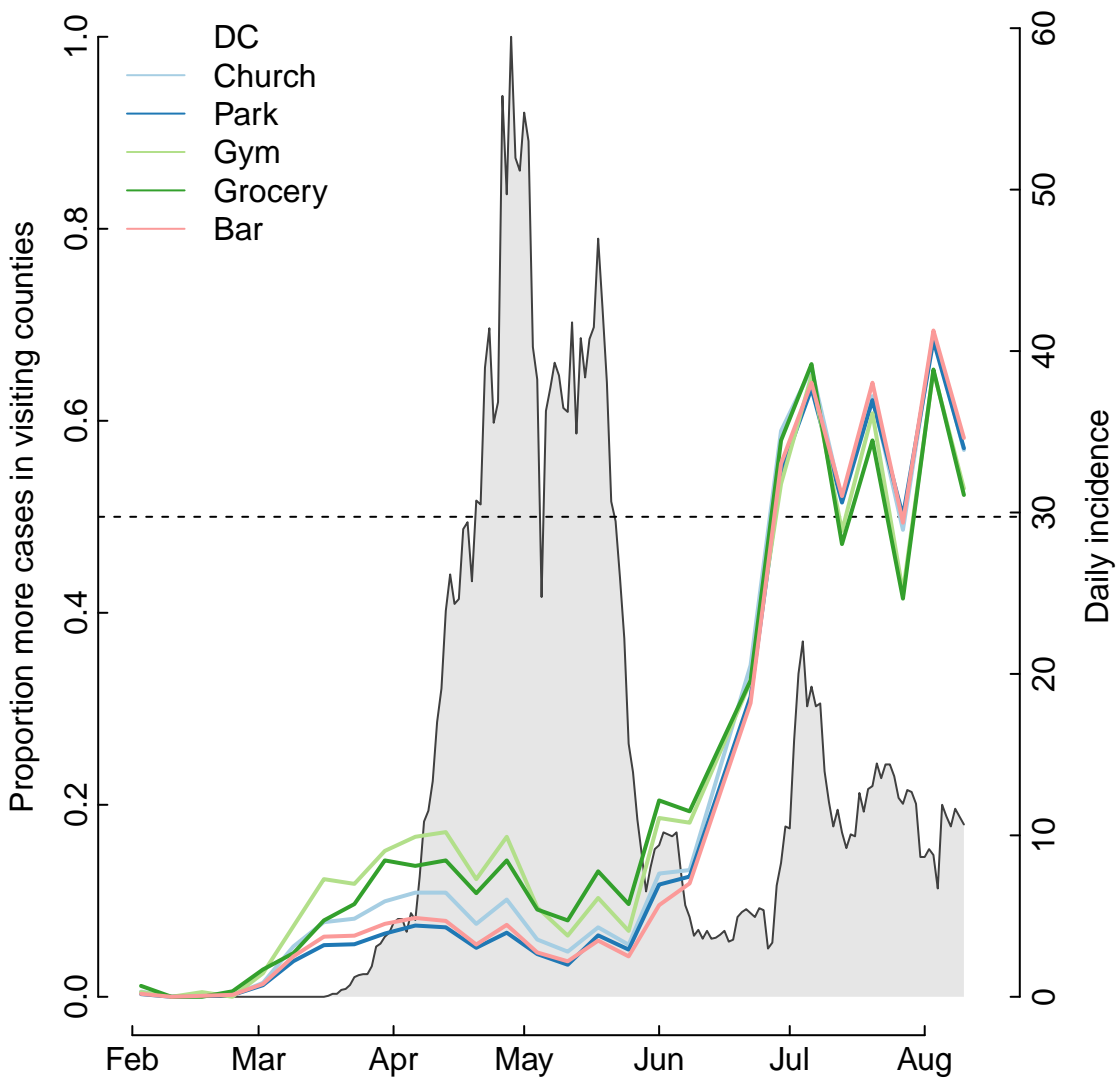


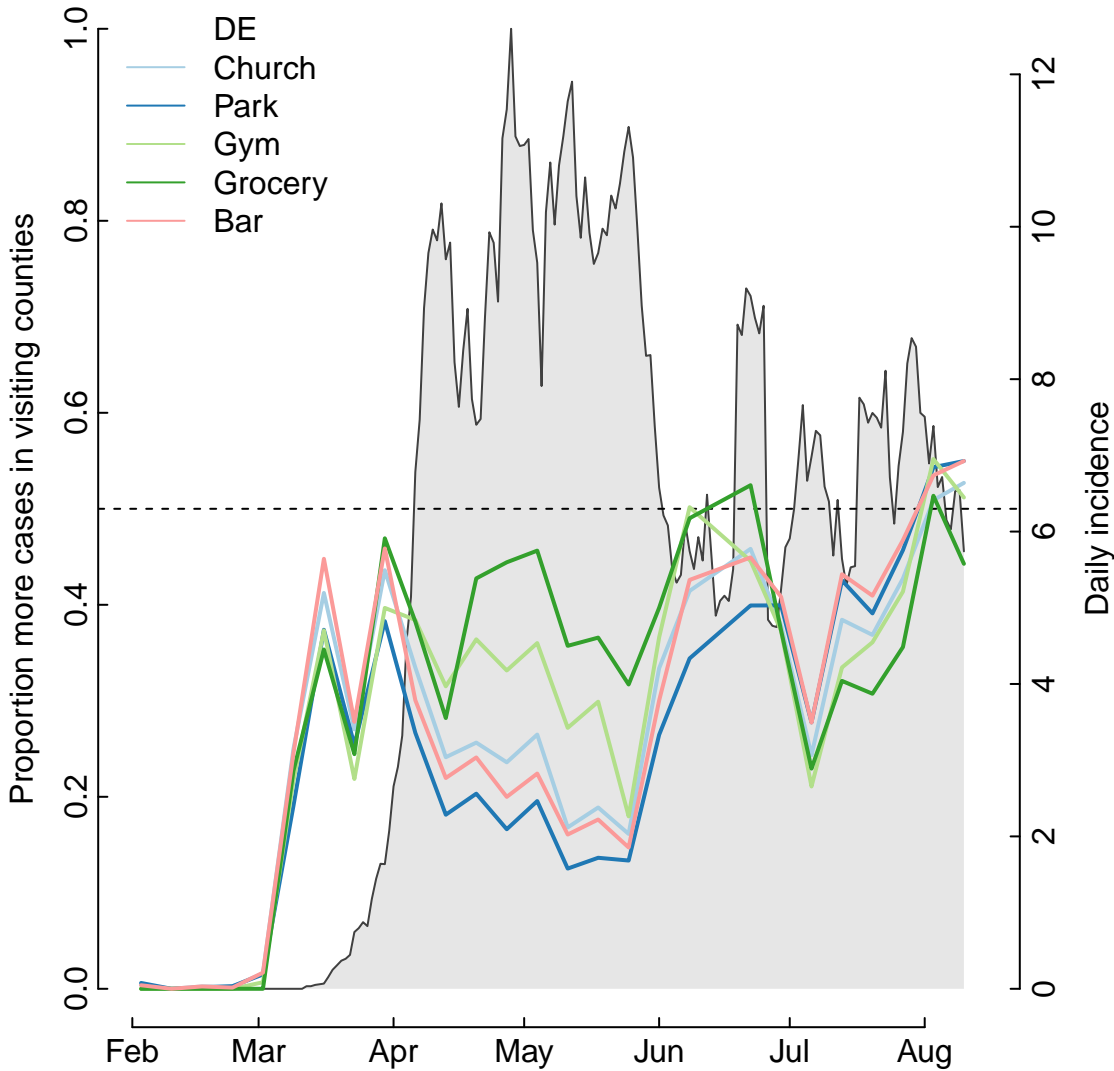


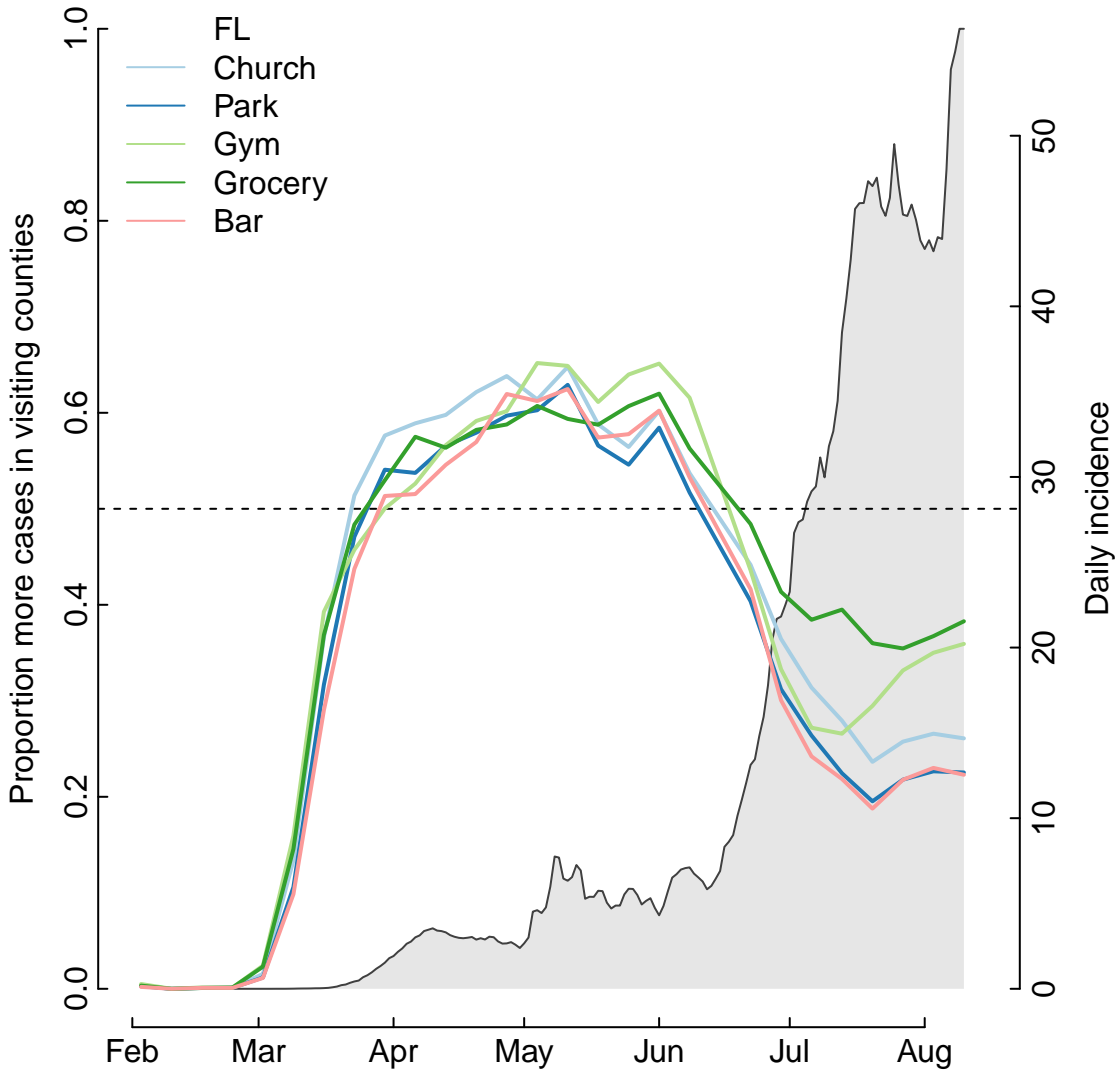


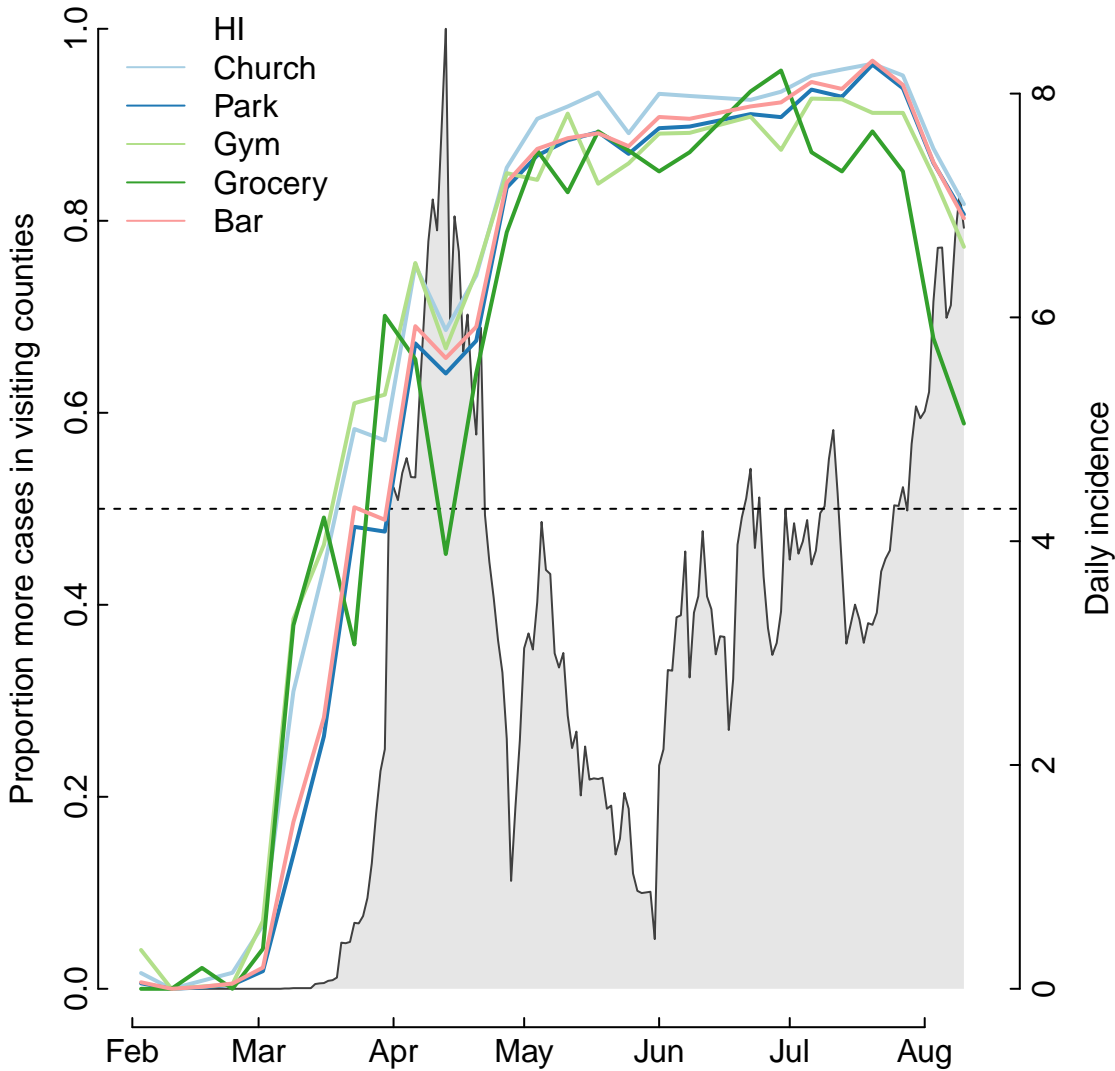












Proportion more cases in visiting counties

- IA
- Church
- Park
- Gym
- Grocery
- Bar

