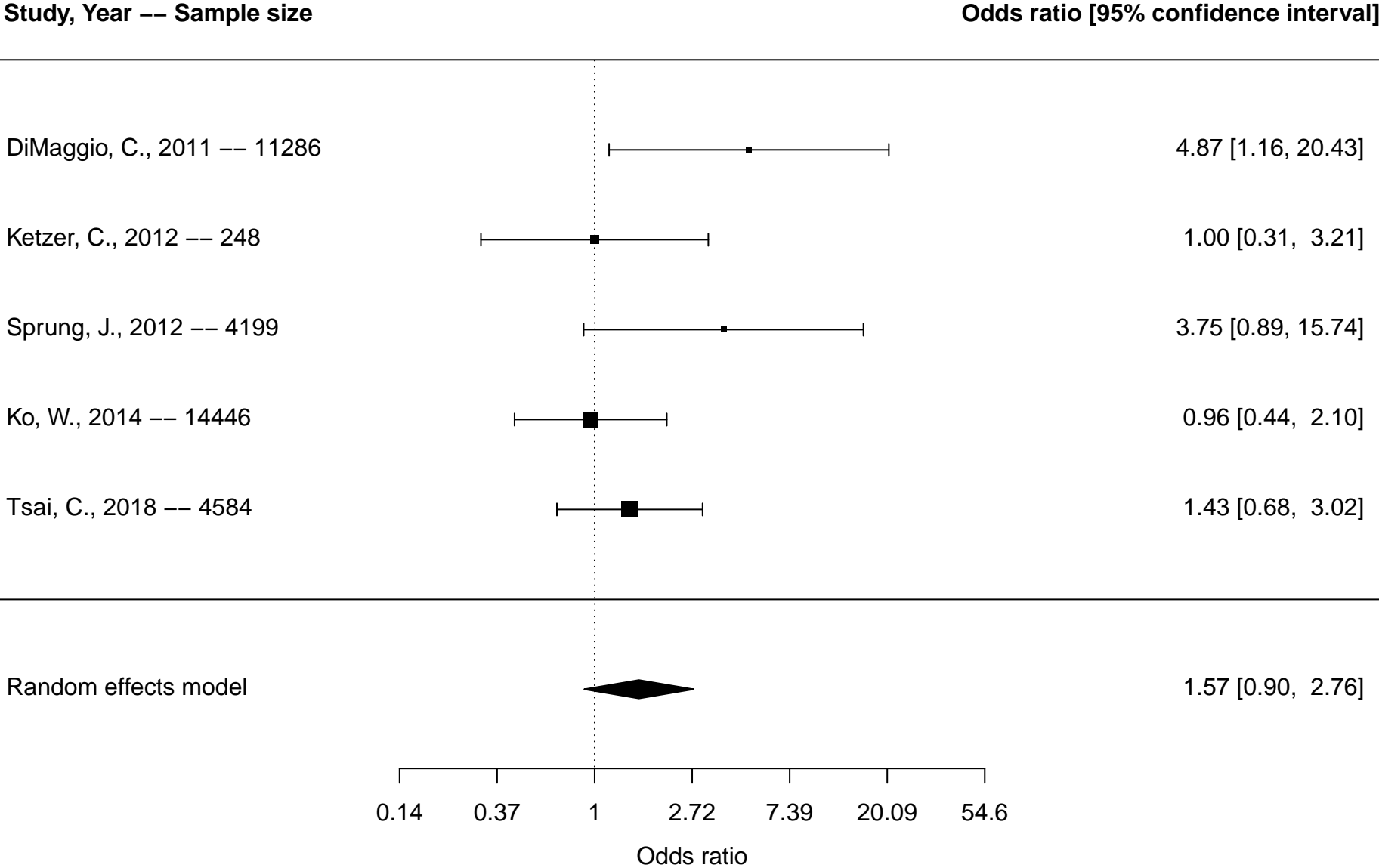


Table of Contents: Supplemental Forest plots of meta-analyses on the associations between environmental and chemical factors and ADHD

Figure S1. Anesthesia and ADHD overall, dichotomous outcomes.....	3
Figure S2. Cadmium and ADHD overall, dichotomous outcomes.....	4
Figure S3. Hexachlorobenzene and ADHD overall, dichotomous outcomes.....	5
Figure S4. Lead and ADHD overall, dichotomous outcomes.....	6
Figure S5. Lead and ADHD symptoms, dichotomous outcomes.....	7
Figure S6. Lead and inattention, dichotomous outcomes.....	8
Figure S7. Lead and hyperactivity/impulsivity, dichotomous outcomes.....	9
Figure S8. Lead and ADHD overall, continuous outcomes.....	10
Figure S9. Lead and inattention, continuous outcomes.....	11
Figure S10. Lead and hyperactivity/impulsivity, continuous outcomes.....	12
Figure S11. Lead and ADHD overall, dichotomous outcomes, sensitivity analysis excluding less precise measurements.....	13
Figure S12. Lead and ADHD overall, continuous outcomes, sensitivity analysis excluding less precise measurements.....	14
Figure S13. Prenatal lead and ADHD overall, dichotomous outcomes.....	15
Figure S14. Prenatal lead and hyperactivity/impulsivity dichotomous outcomes.....	16
Figure S15. Cumulative lead exposure and ADHD Overall, dichotomous outcomes.....	17
Figure S16. Cumulative lead exposure and inattention, dichotomous outcomes.....	18
Figure S17. Cumulative lead exposure and hyperactivity/impulsivity, dichotomous outcomes.....	19

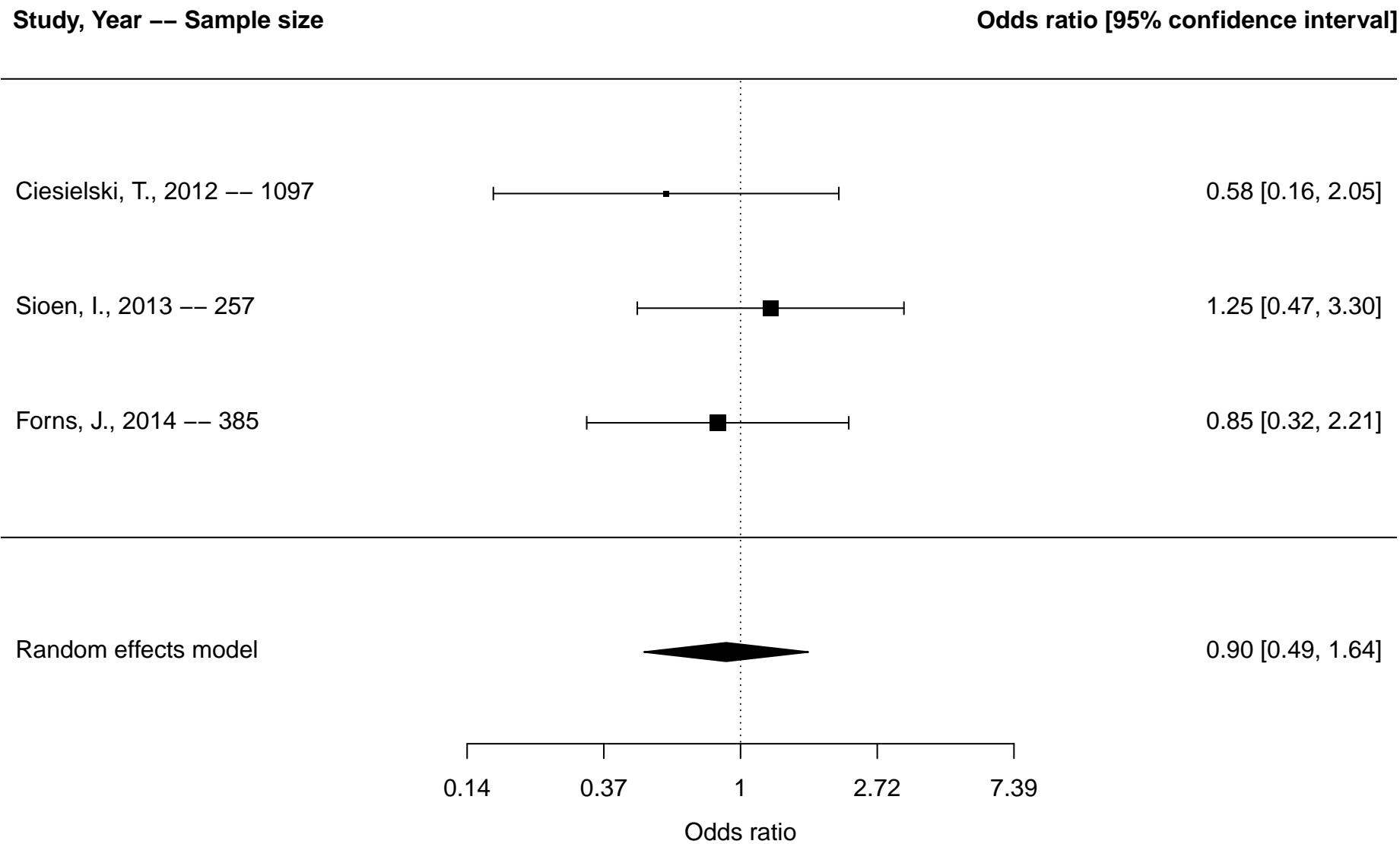
Figure S18. Mercury and ADHD overall, dichotomous outcomes.....	20
Figure S19. Mercury and diagnosis only, dichotomous outcomes.....	21
Figure S20. Mercury and hyperactivity/impulsivity, dichotomous outcomes	22
Figure S21. Mercury and ADHD overall, continuous outcomes	23
Figure S22. Mercury and inattention, continuous outcomes	24
Figure S23. Mercury and ADHD overall, dichotomous outcomes, sensitivity analysis excluding Geier studies.....	25
Figure S24. Mercury and diagnosis only, dichotomous outcomes, sensitivity analysis excluding Geier studies.....	26
Figure S25. Prenatal mercury and ADHD overall, continuous outcomes.....	27
Figure S26. Cumulative mercury and ADHD overall, dichotomous outcomes.....	28
Figure S27. Cumulative mercury and ADHD overall, dichotomous outcomes, sensitivity analysis excluding Geier studies.....	29
Figure S28. Organophosphates and ADHD overall, dichotomous outcomes.....	30
Figure S29. Organophosphates and inattention, dichotomous outcomes	31
Figure S30. Organophosphates and ADHD overall, continuous outcomes.....	32
Figure S31. Polychlorinated biphenyls and ADHD overall, dichotomous outcomes.....	33
Figure S32. Polychlorinated biphenyls and ADHD overall, continuous outcomes.....	34
Figure S33. Polychlorinated biphenyls and inattention, continuous outcomes	35

Figure S1. Forest plot of meta-analysis of anesthesia exposure and attention-deficit/hyperactivity disorder (ADHD) overall* based on studies reporting dichotomous outcomes



*Overall includes studies reporting on any included ADHD outcomes (diagnosis, ADHD symptoms, inattention, hyperactivity/impulsivity)

Figure S2. Forest plot of meta-analysis of cadmium exposure and attention-deficit/hyperactivity disorder (ADHD) overall* based on studies reporting dichotomous outcomes

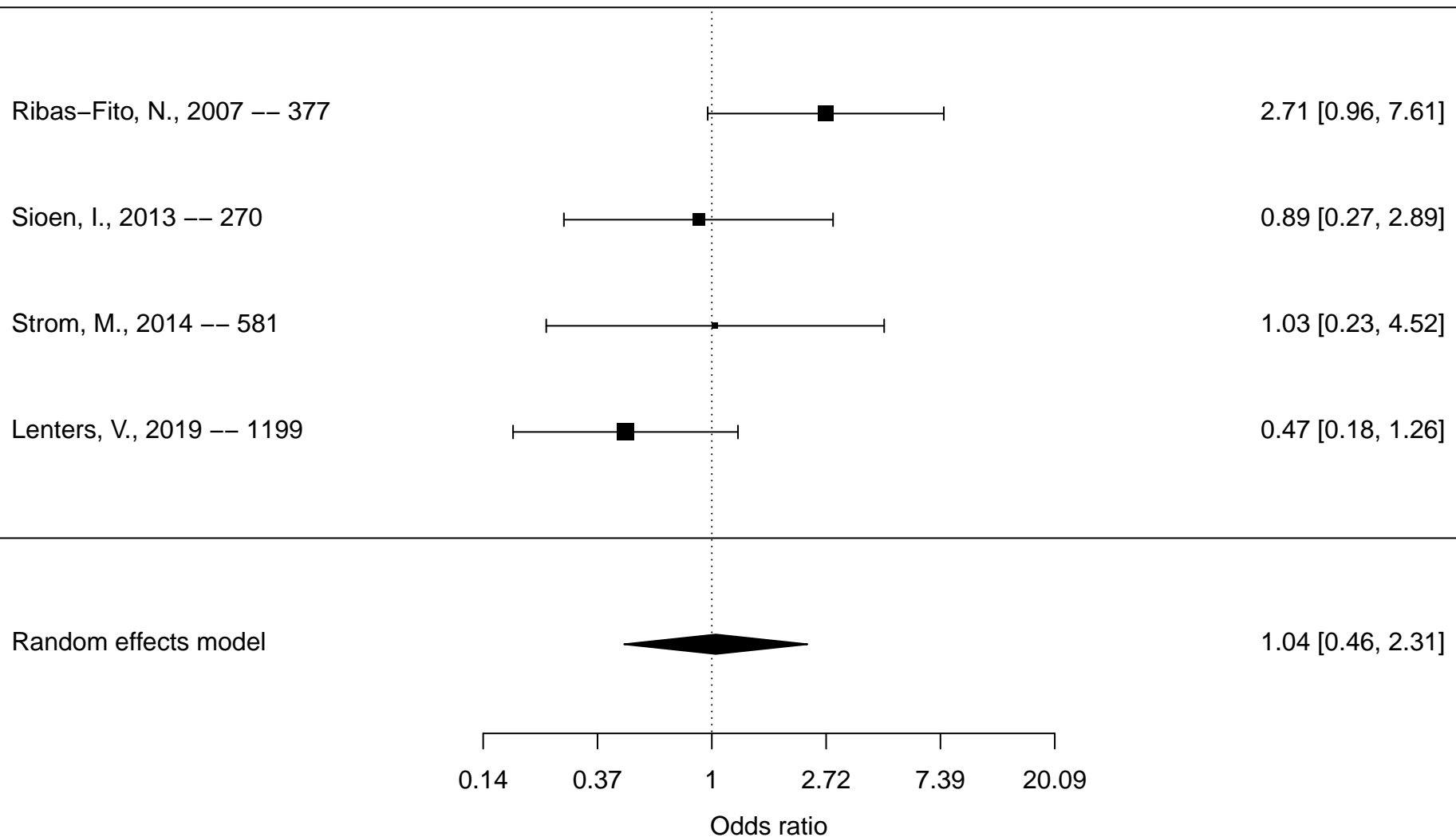


*Overall includes studies reporting on any included ADHD outcomes (diagnosis, ADHD symptoms, inattention, hyperactivity/impulsivity)

Figure S3. Forest plot of hexachlorobenzene and attention-deficit/hyperactivity disorder (ADHD) overall* based on studies reporting dichotomous outcomes

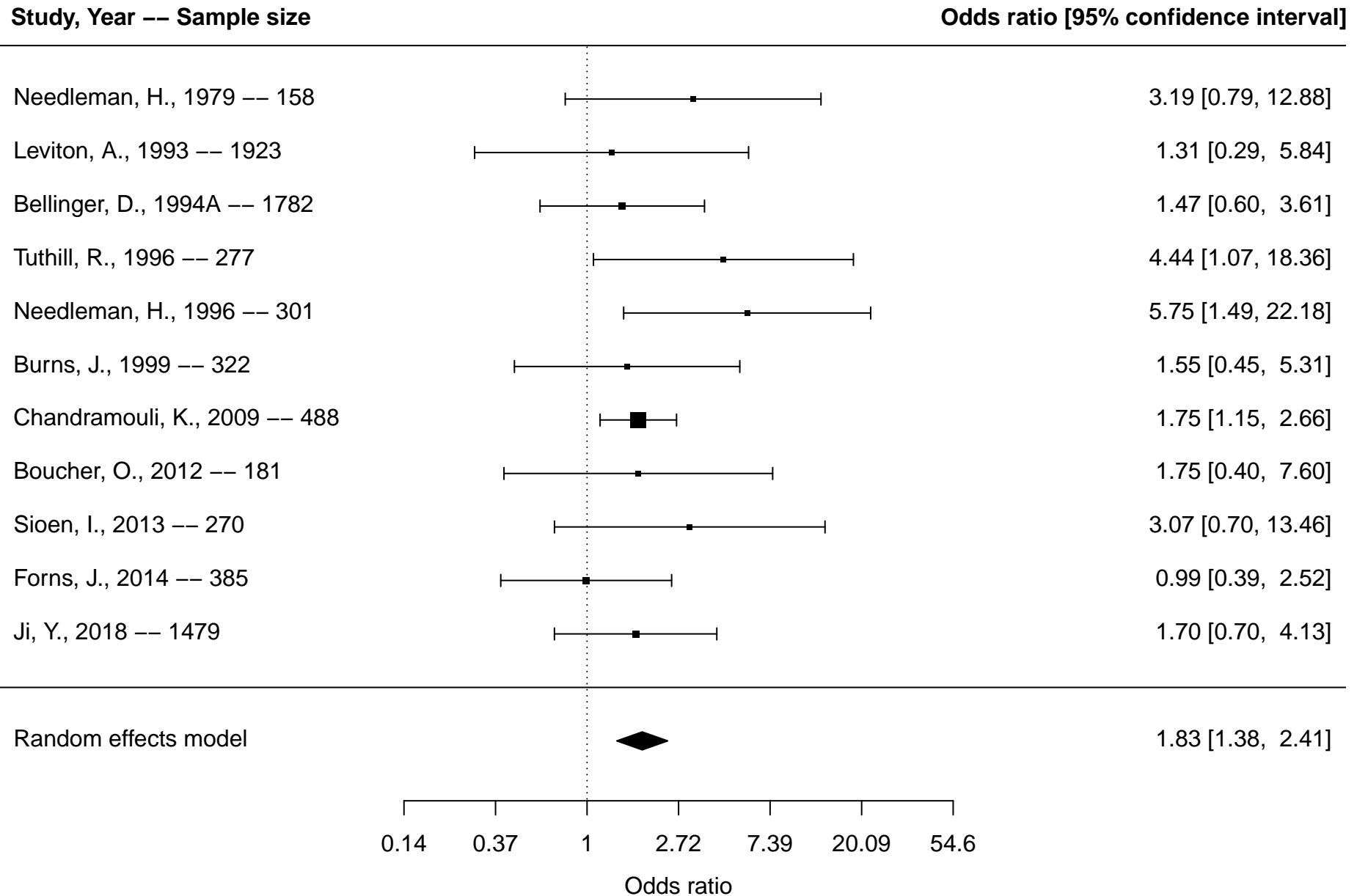
Study, Year -- Sample size

Odds ratio [95% confidence interval]



*Overall includes studies reporting on any included ADHD outcomes (diagnosis, ADHD symptoms, inattention, hyperactivity/impulsivity)

Figure S4. Forest plot of lead exposure and attention-deficit/hyperactivity disorder (ADHD) overall* based on studies reporting dichotomous outcomes



*Overall includes studies reporting on any included ADHD outcomes (diagnosis, ADHD symptoms, inattention, hyperactivity/impulsivity)

Figure S5. Forest plot of lead exposure and attention-deficit/hyperactivity disorder (ADHD) symptoms based on studies reporting dichotomous outcomes

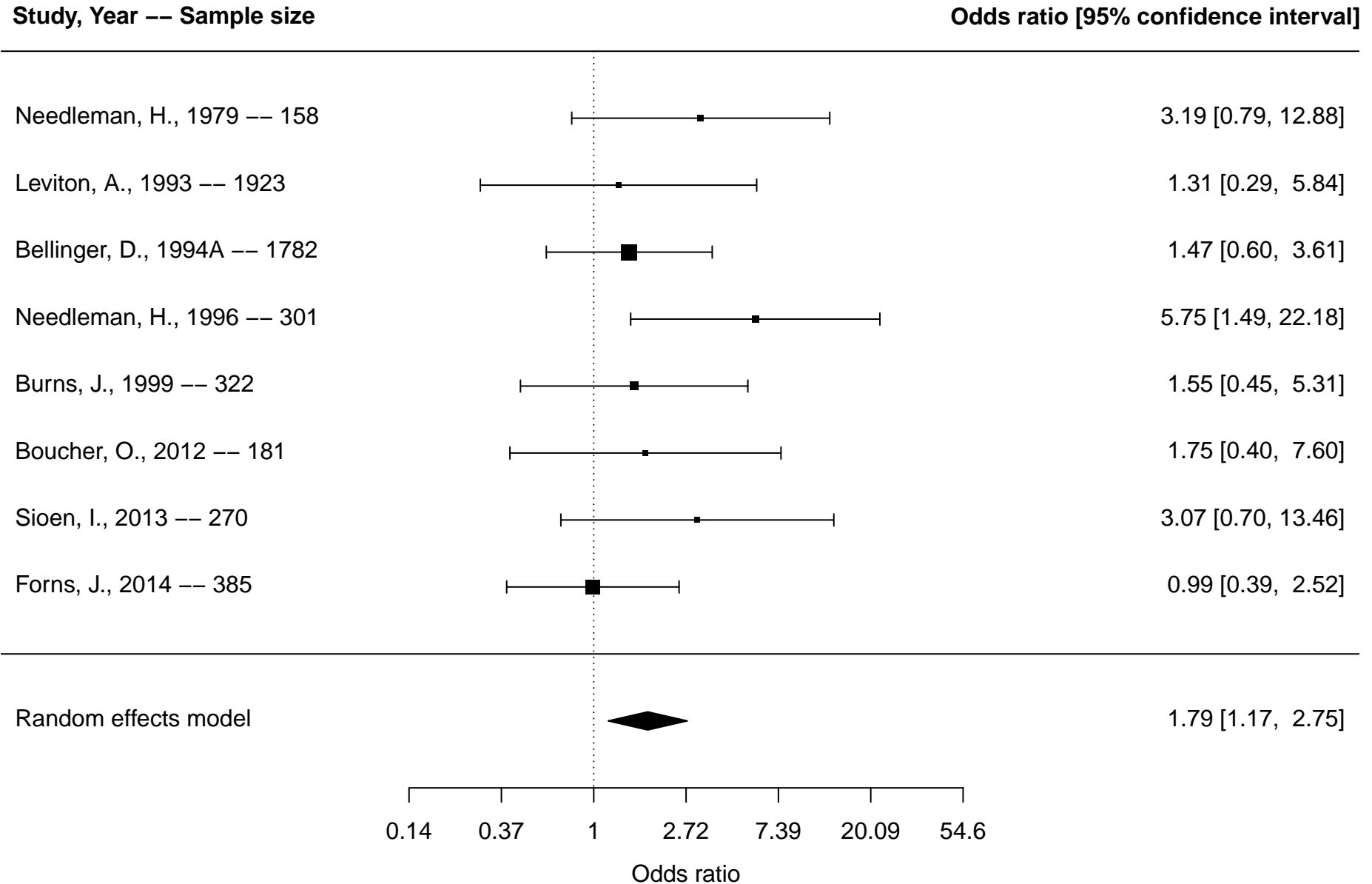


Figure S6. Forest plot of lead exposure and inattention based on studies reporting dichotomous outcomes

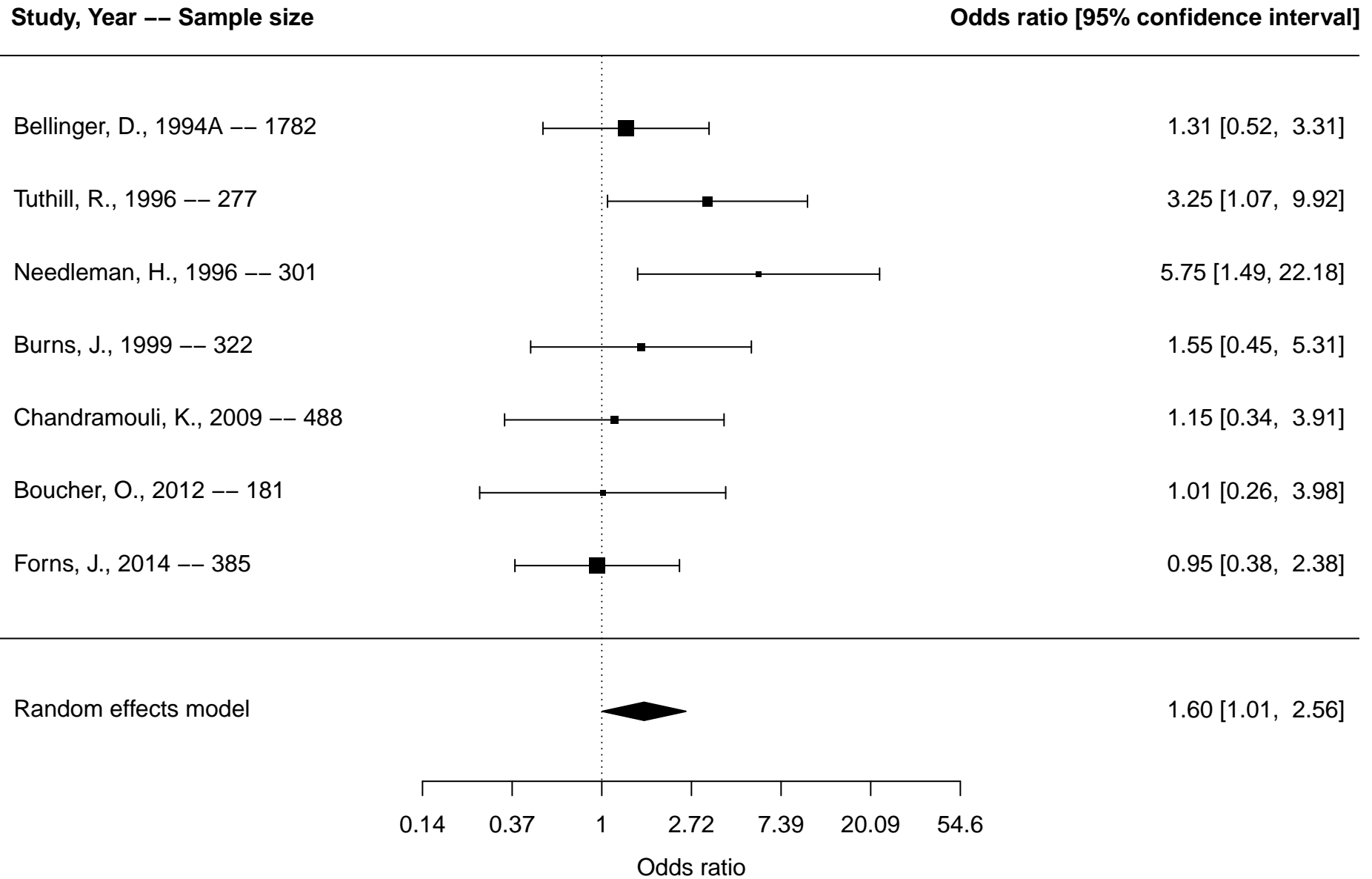


Figure S7. Forest plot of lead exposure and hyperactivity/impulsivity based on studies reporting dichotomous outcomes

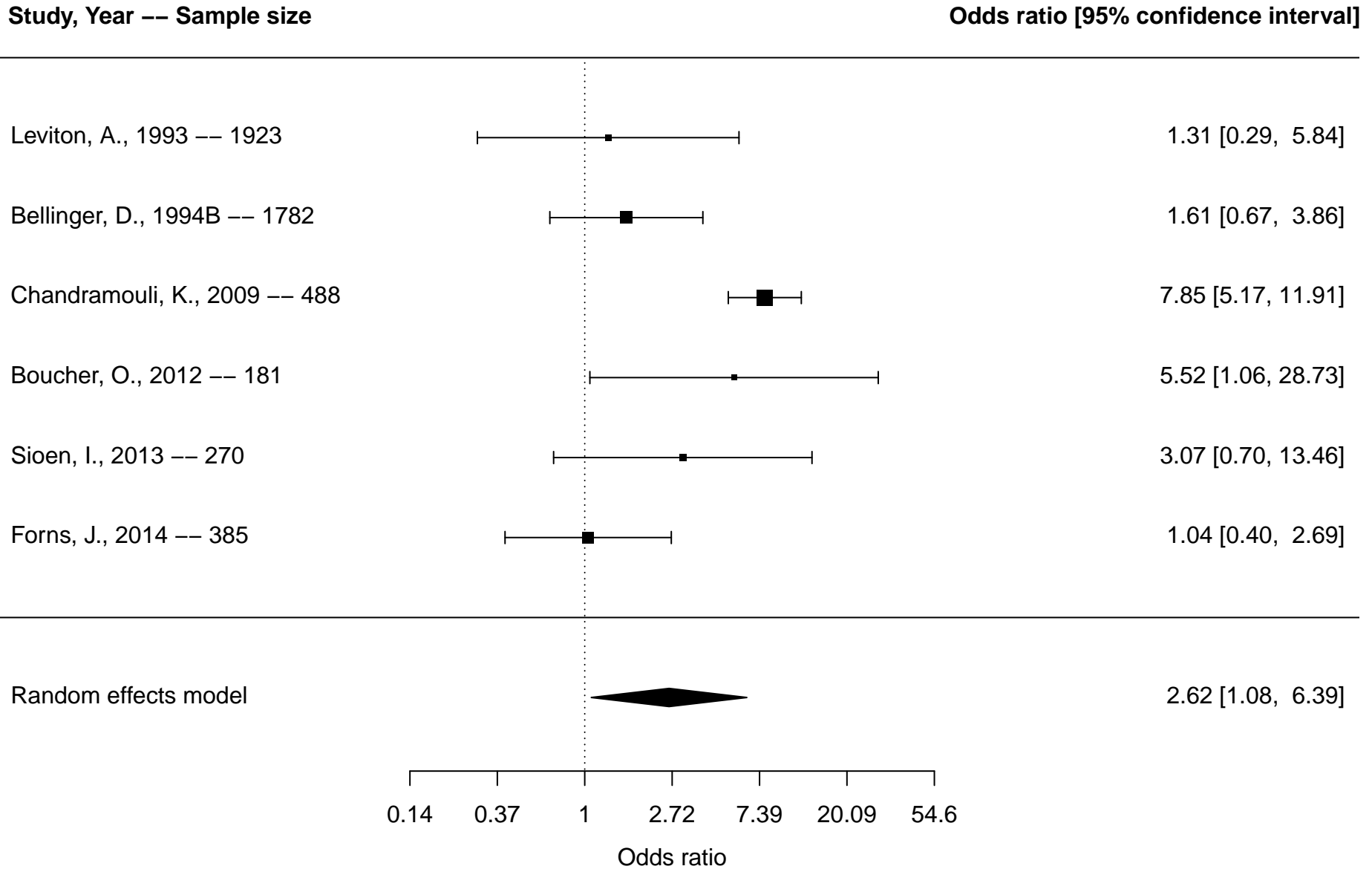
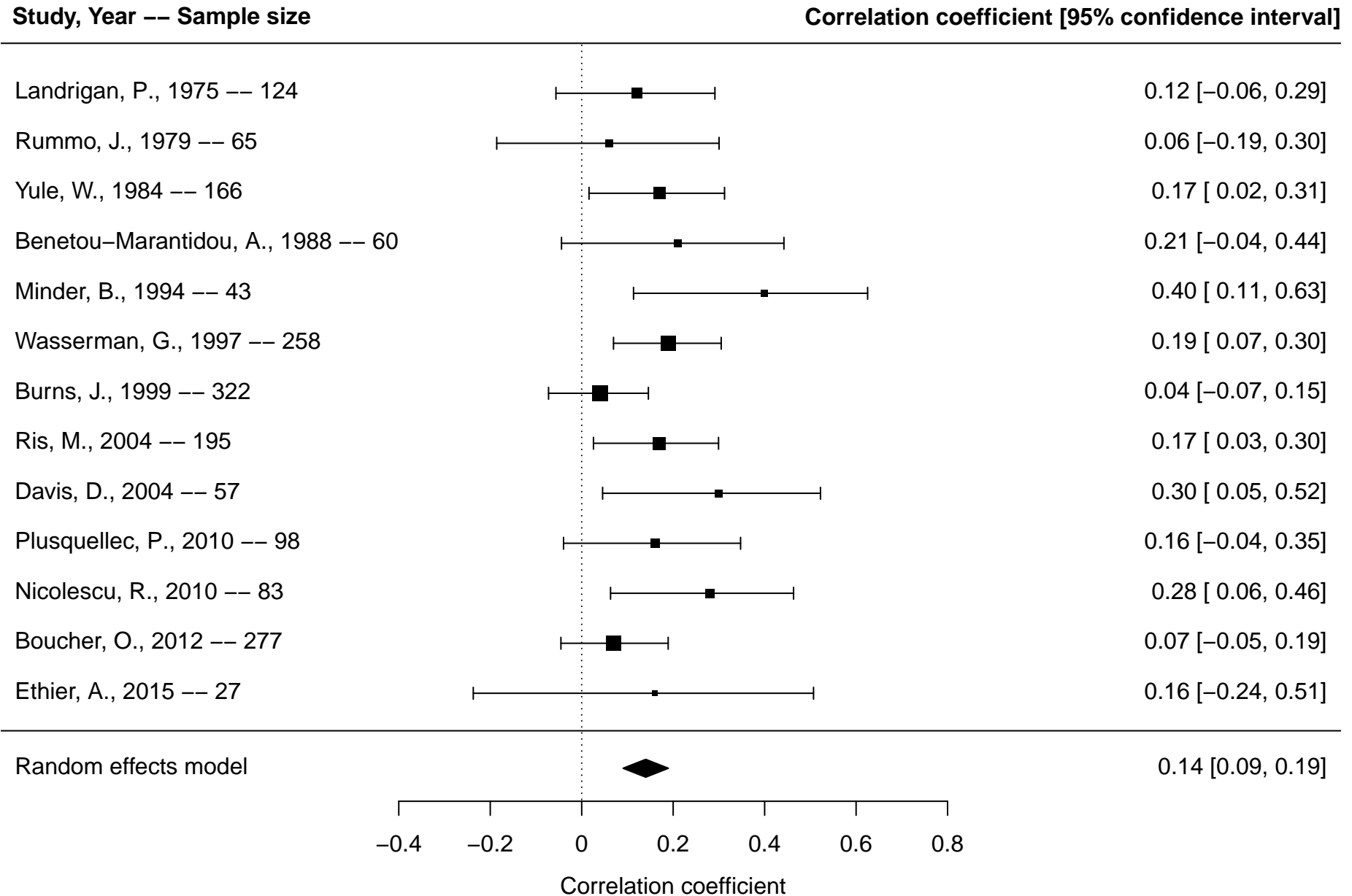


Figure S8. Forest plot of lead exposure and attention-deficit/hyperactivity disorder (ADHD) overall* based on studies reporting continuous outcomes



*Overall includes studies reporting on any included ADHD outcomes (diagnosis, ADHD symptoms, inattention, hyperactivity/impulsivity)

Figure S9. Forest plot of lead exposure and inattention based on studies reporting continuous outcomes

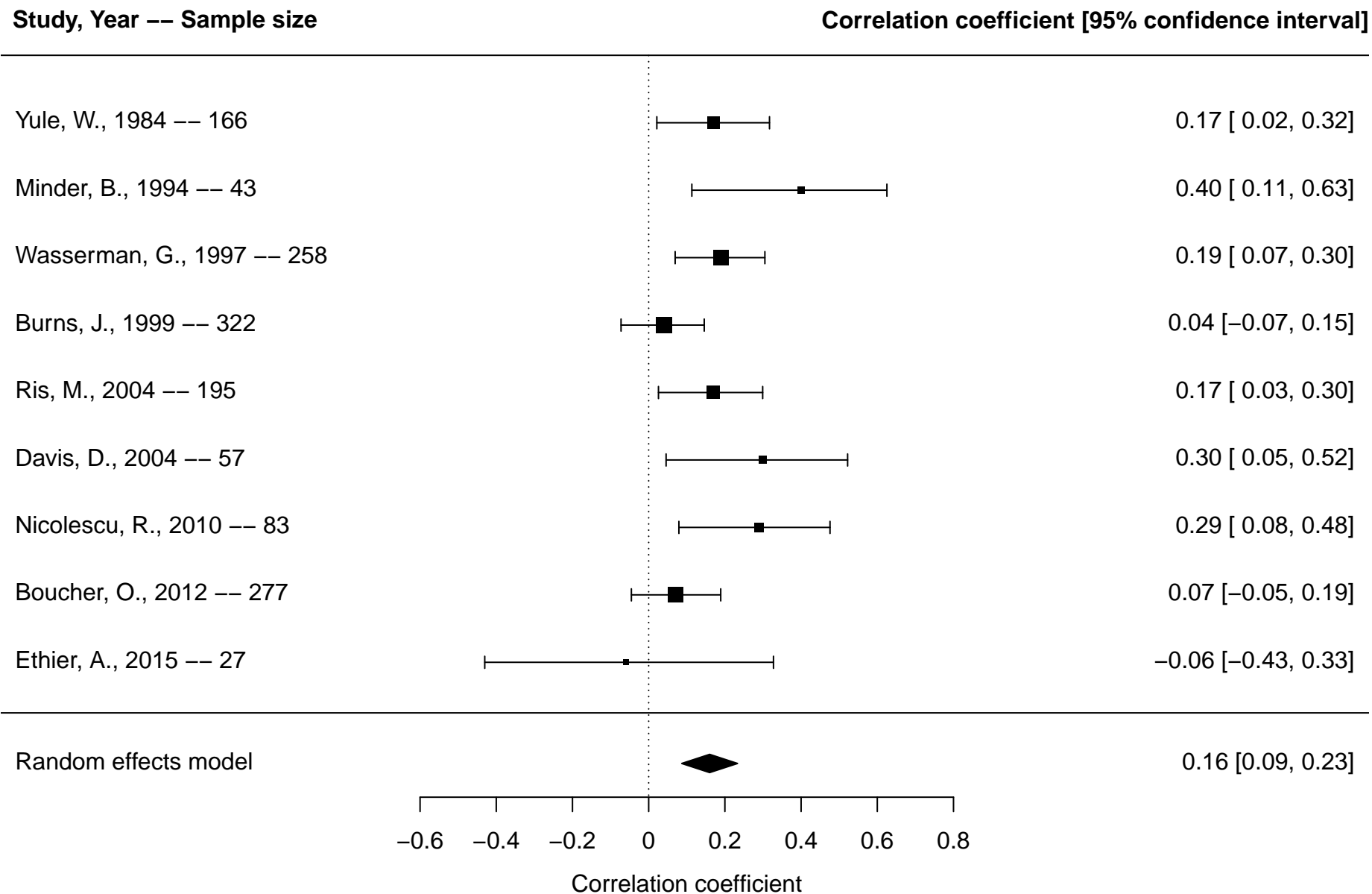


Figure S10. Forest plot of lead exposure and hyperactivity/impulsivity based on studies reporting continuous outcomes

Study, Year -- Sample size

Correlation coefficient [95% confidence interval]

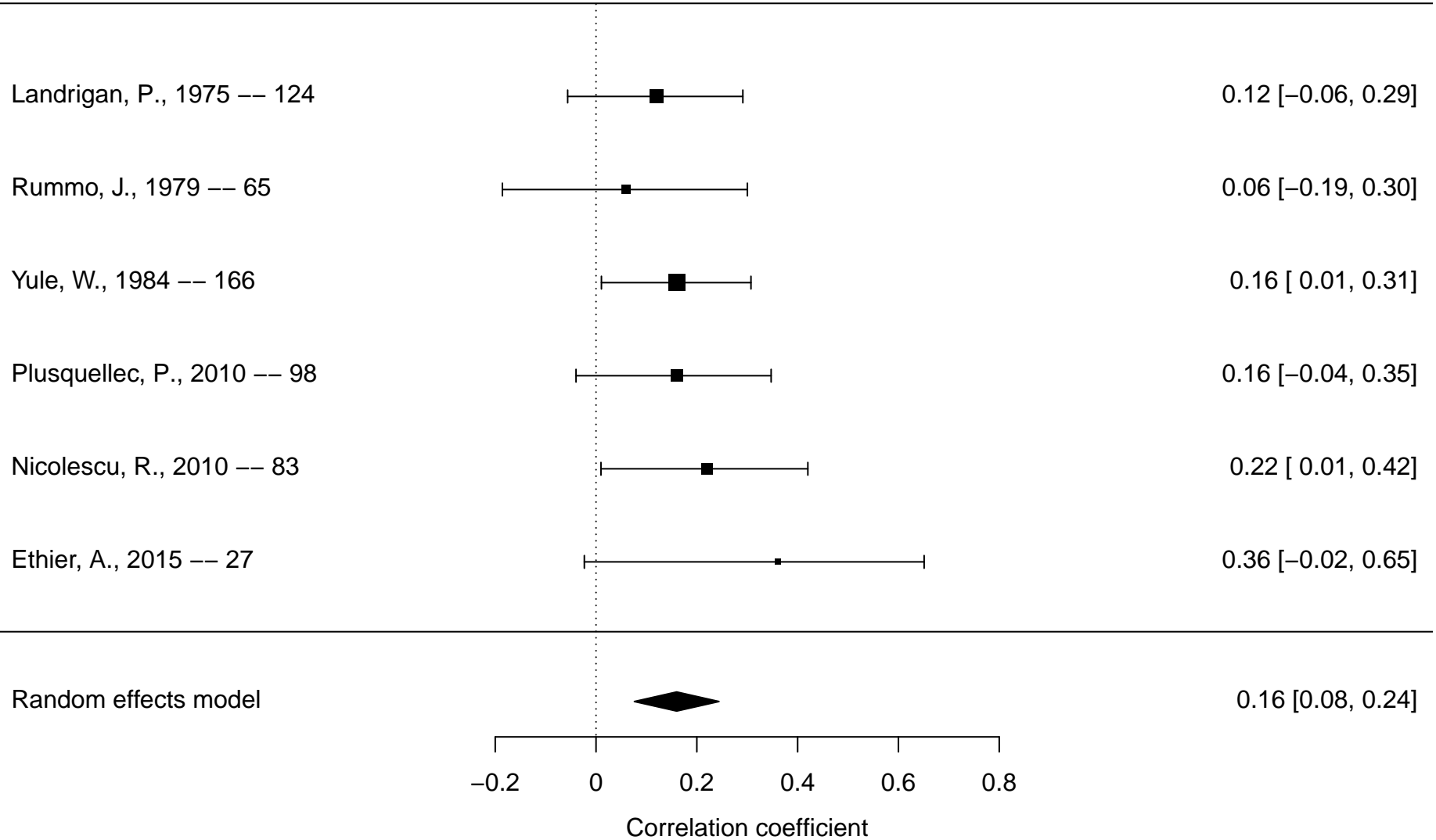
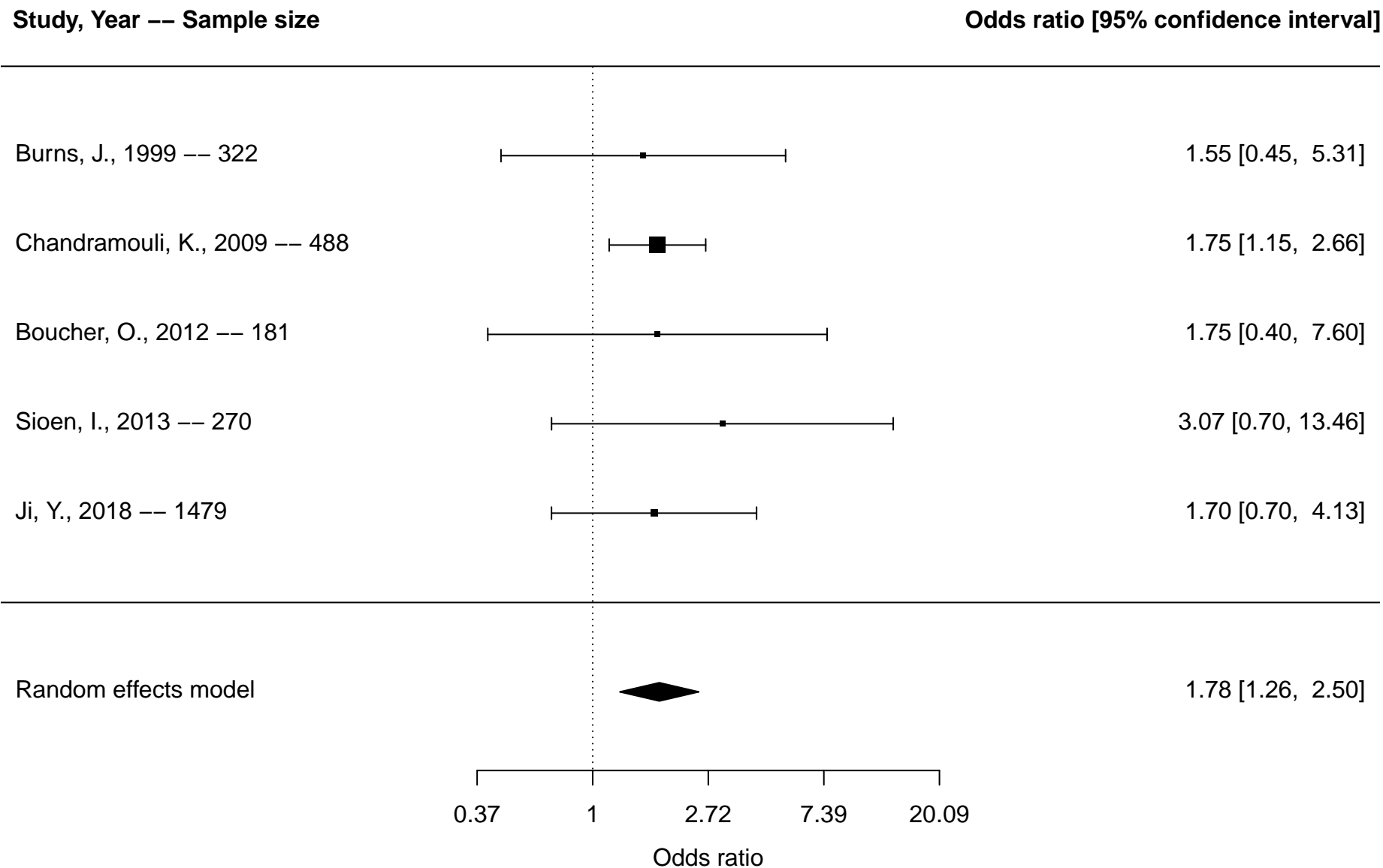
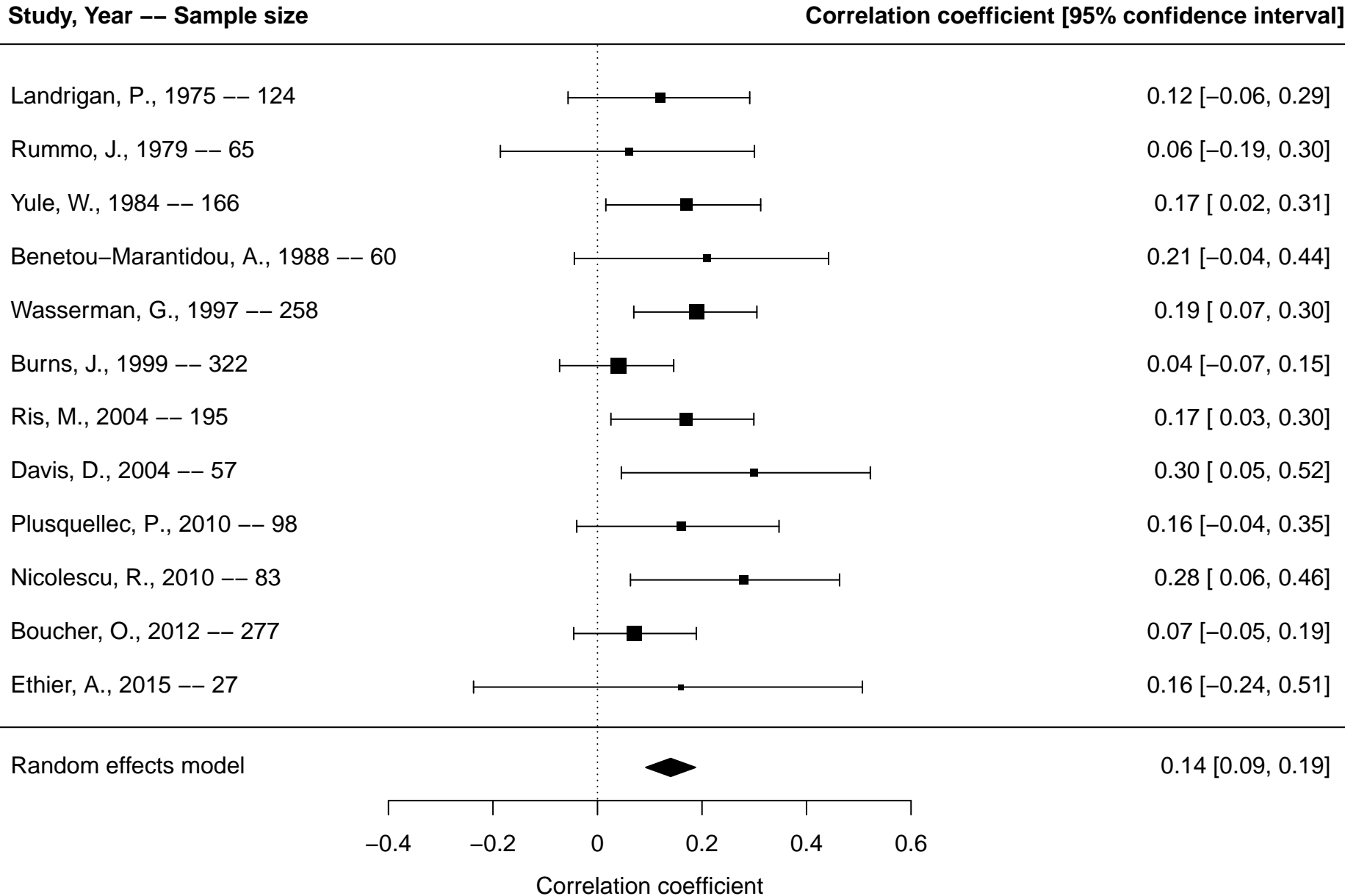


Figure S11. Forest plot of lead exposure and attention-deficit/hyperactivity disorder (ADHD) overall* based on studies reporting dichotomous outcomes (sensitivity analysis excluding less precise measurements)



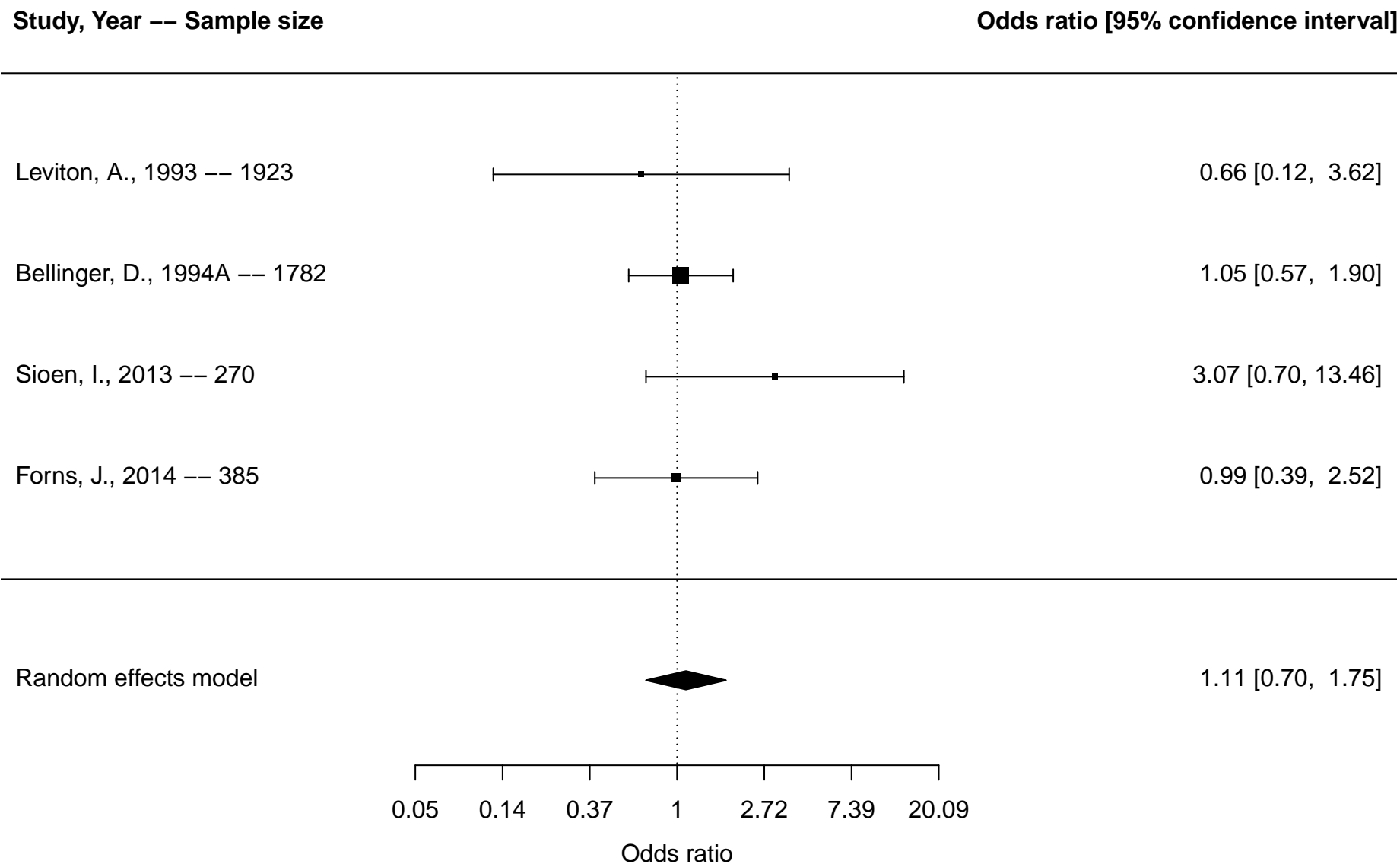
*Overall includes studies reporting on any included ADHD outcomes (diagnosis, ADHD symptoms)

Figure S12. Forest plot of lead exposure and attention-deficit/hyperactivity disorder (ADHD) overall* based on studies reporting continuous outcomes (sensitivity analysis excluding less precise measurements)



*Overall includes studies reporting on any included ADHD outcomes (diagnosis, ADHD symptoms, inattention, hyperactivity/impulsivity)

Figure S13. Forest plot of prenatal lead exposure and attention-deficit/hyperactivity disorder (ADHD) overall* based on studies reporting dichotomous outcomes



*Overall includes studies reporting on any included ADHD outcomes (diagnosis, ADHD symptoms, inattention, hyperactivity/impulsivity)

Figure S14. Forest plot of prenatal lead exposure and hyperactivity/impulsivity based on studies reporting dichotomous outcomes

Study, Year -- Sample size

Odds ratio [95% confidence interval]

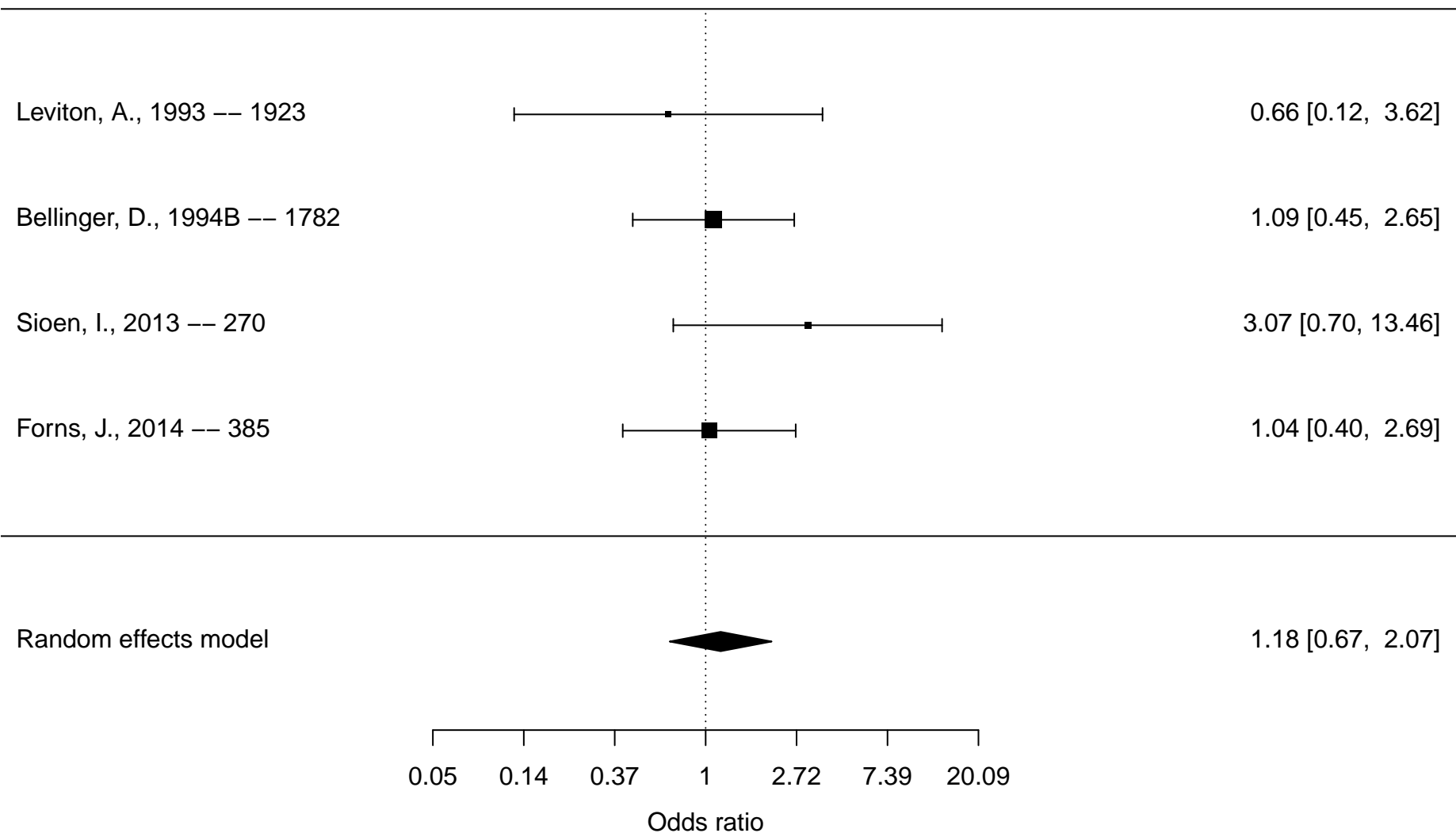
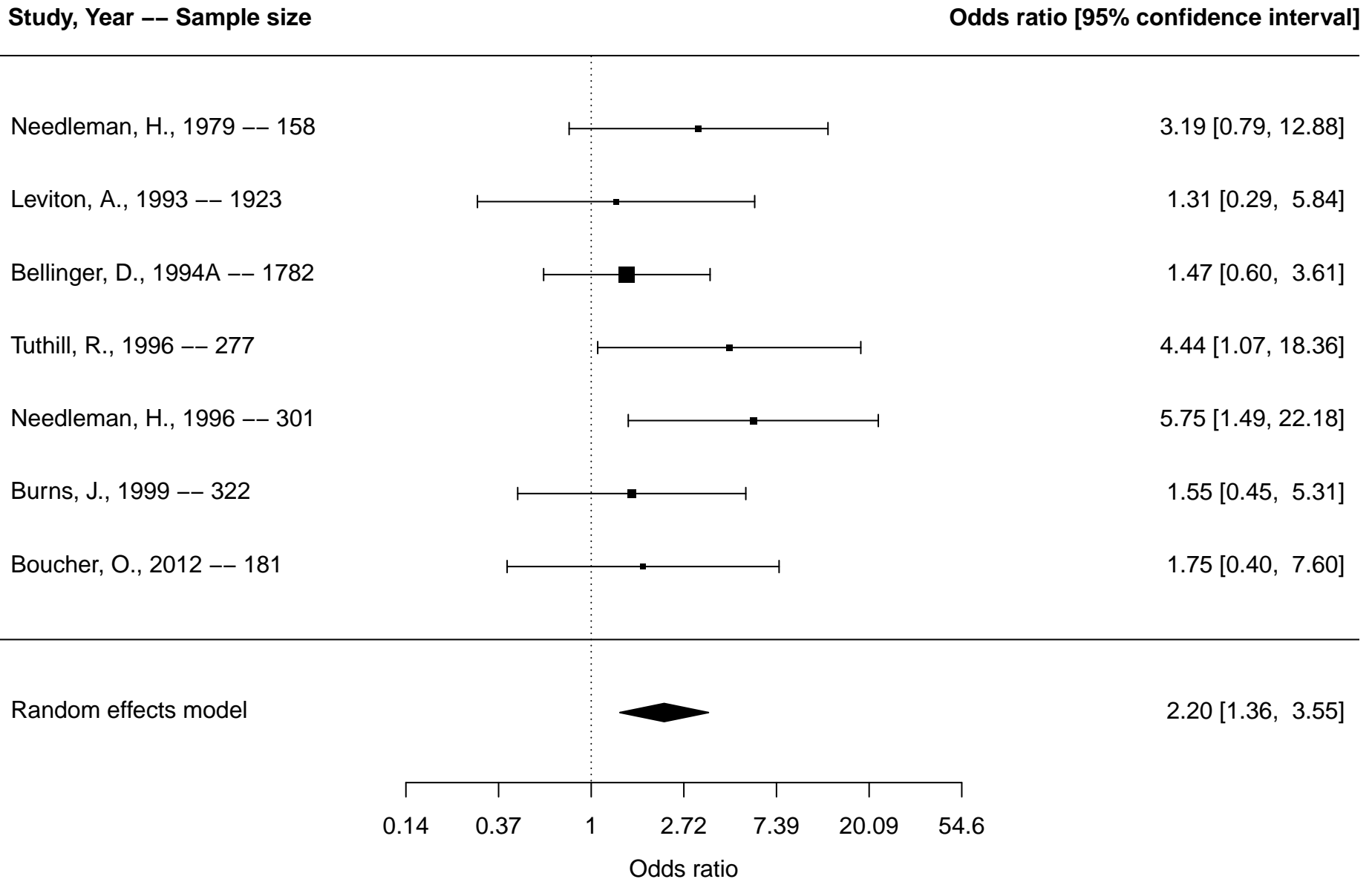


Figure S15. Forest plot of cumulative lead exposure and attention-deficit/hyperactivity disorder (ADHD) overall* based on studies reporting dichotomous outcomes



*Overall includes studies reporting on any included ADHD outcomes (diagnosis, ADHD symptoms, inattention, hyperactivity/impulsivity)

Figure S16. Forest plot of cumulative lead exposure and inattention based on studies reporting dichotomous outcomes

Study, Year -- Sample size

Odds ratio [95% confidence interval]

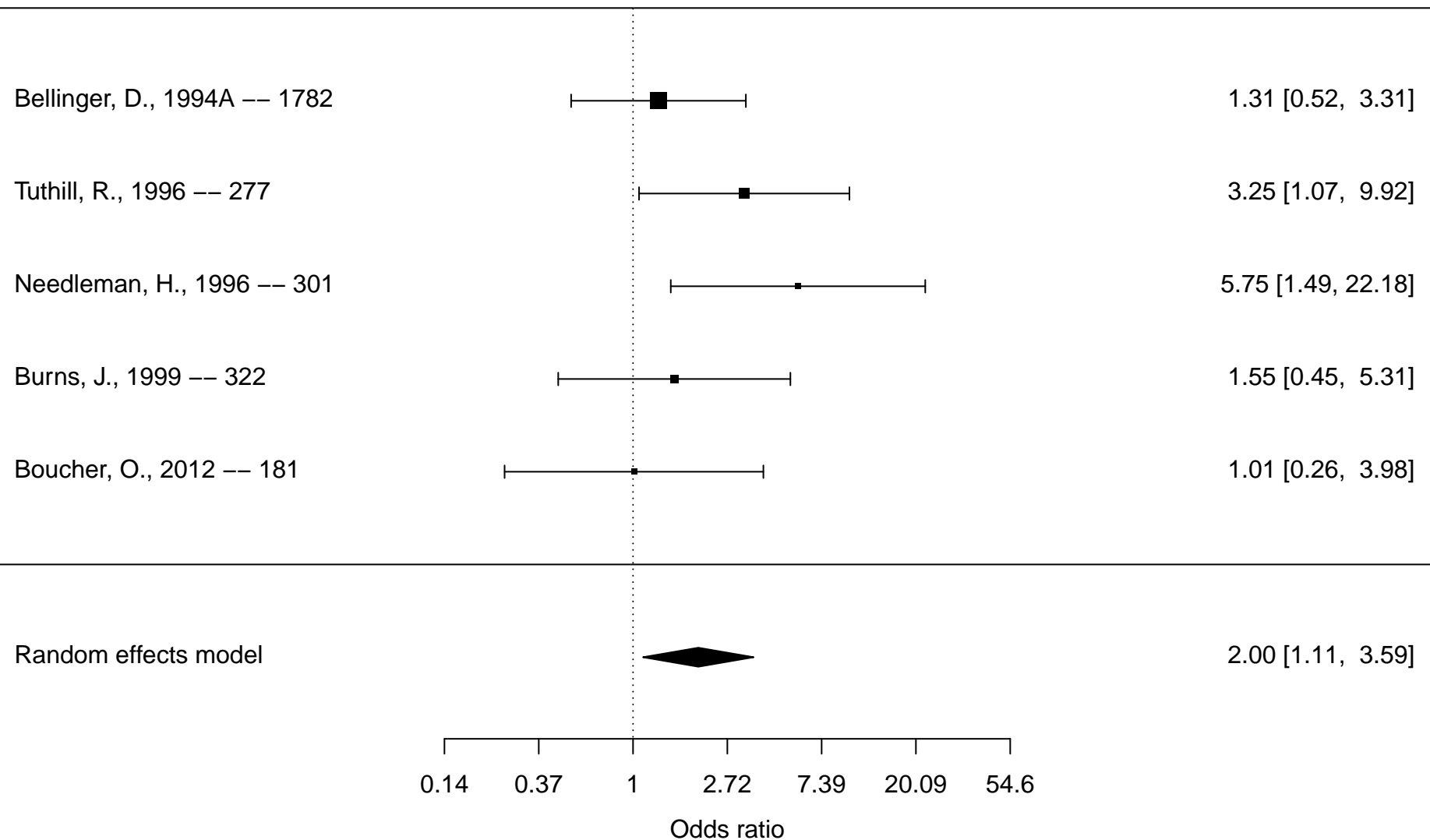


Figure S17. Forest plot of cumulative lead exposure and hyperactivity/impulsivity based on studies reporting dichotomous outcomes

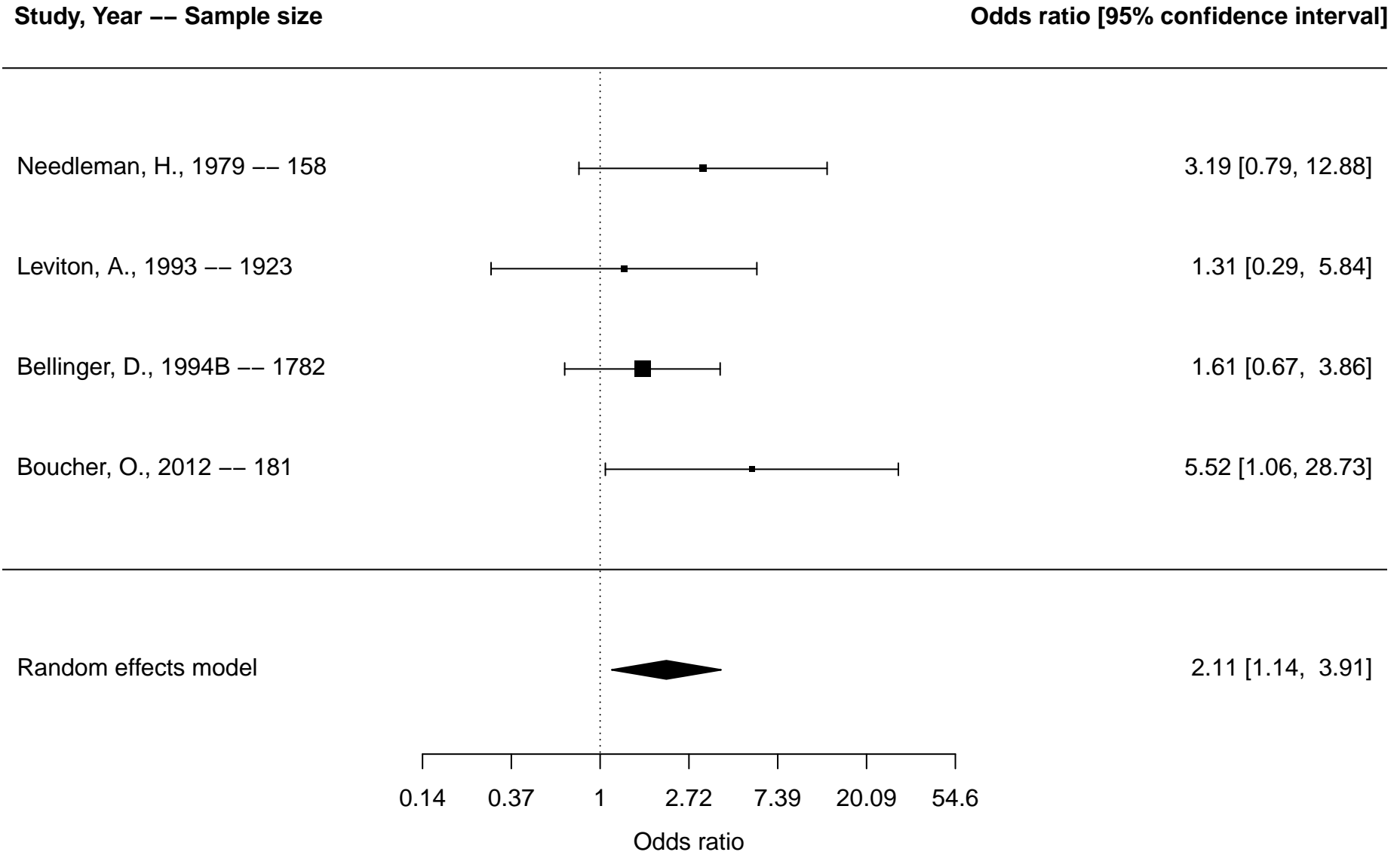
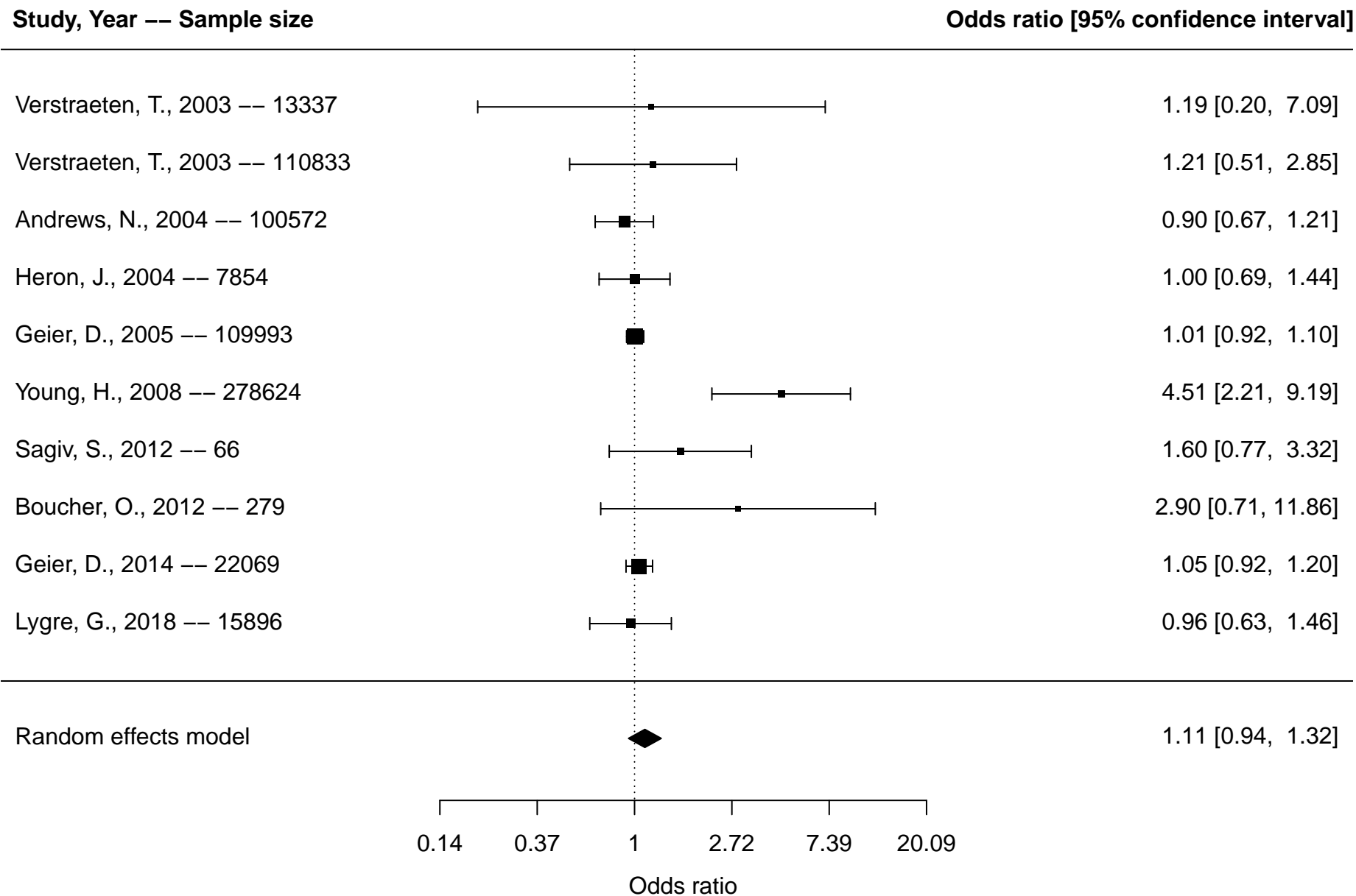


Figure S18. Forest plot of mercury exposure and attention-deficit/hyperactivity disorder (ADHD) overall* based on studies reporting dichotomous outcomes



*Overall includes studies reporting on any included ADHD outcomes (diagnosis, ADHD symptoms, inattention, hyperactivity/impulsivity)

Figure S19. Forest plot of mercury exposure and diagnosis only based on studies reporting dichotomous outcomes

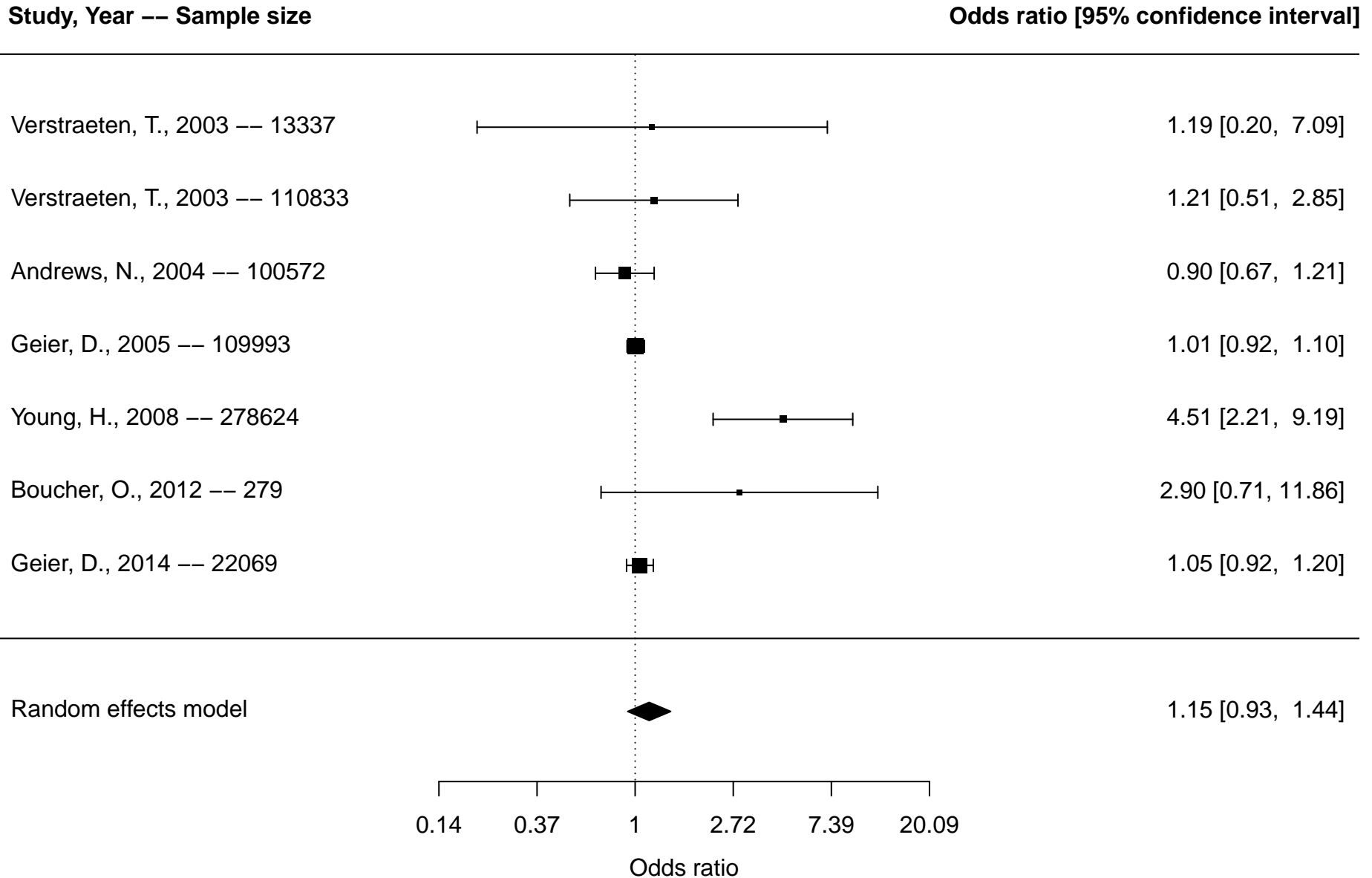


Figure S20. Forest plot of mercury exposure and hyperactivity/impulsivity based on studies reporting dichotomous outcomes

Study, Year -- Sample size

Odds ratio [95% confidence interval]

Heron, J., 2004 -- 7854



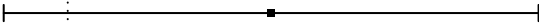
1.00 [0.69, 1.44]

Sagiv, S., 2012 -- 66



1.70 [0.75, 3.87]

Boucher, O., 2012 -- 279



2.92 [0.71, 11.95]

Random effects model

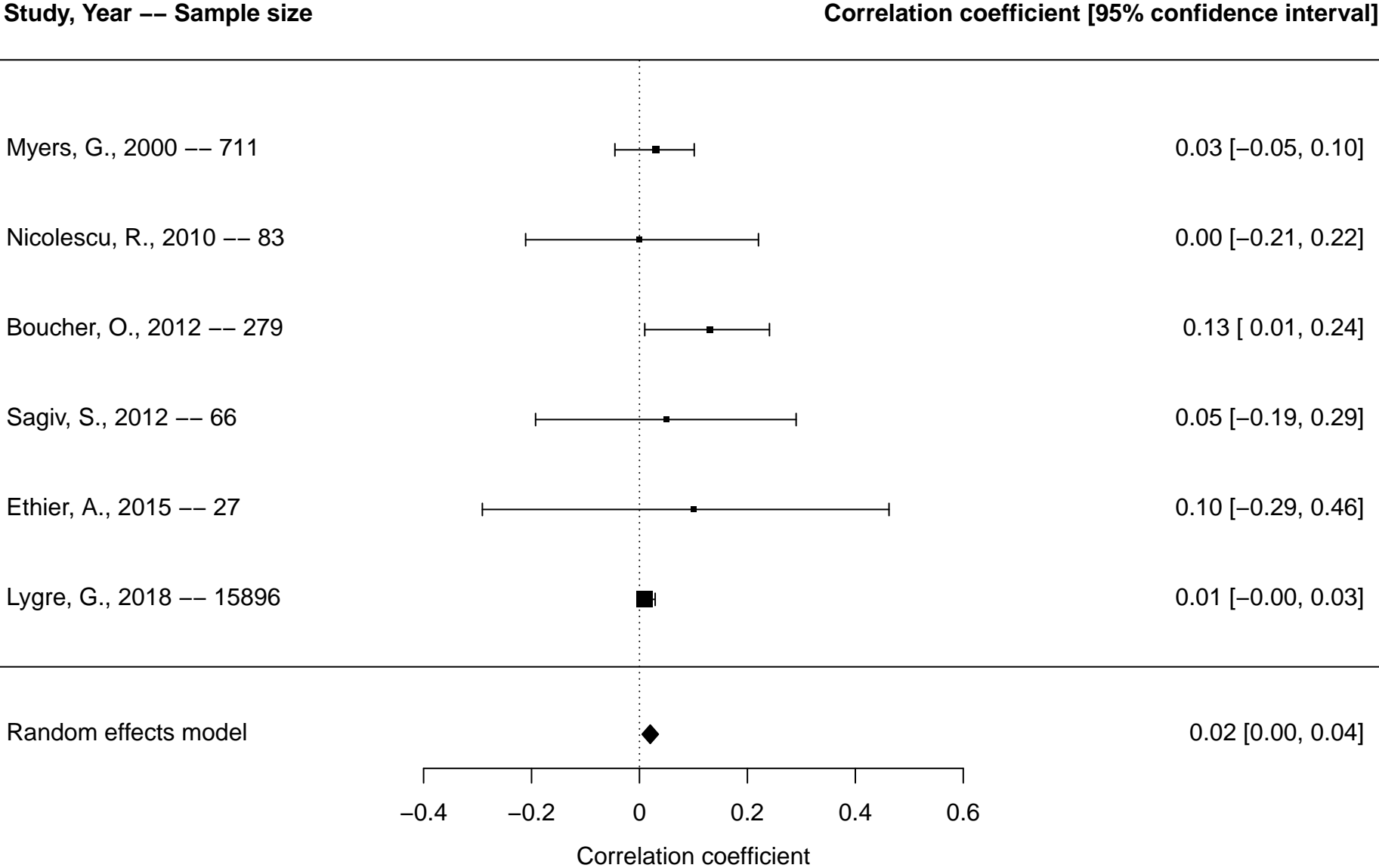


1.32 [0.78, 2.25]

0.37 1 2.72 7.39 20.09

Odds ratio

Figure S21. Forest plot of mercury exposure and attention-deficit/hyperactivity disorder (ADHD) overall* based on studies reporting continuous outcomes



*Overall includes studies reporting on any included ADHD outcomes (diagnosis, ADHD symptoms, inattention, hyperactivity/impulsivity)

Figure S22. Forest plot of mercury exposure and inattention based on studies reporting continuous outcomes

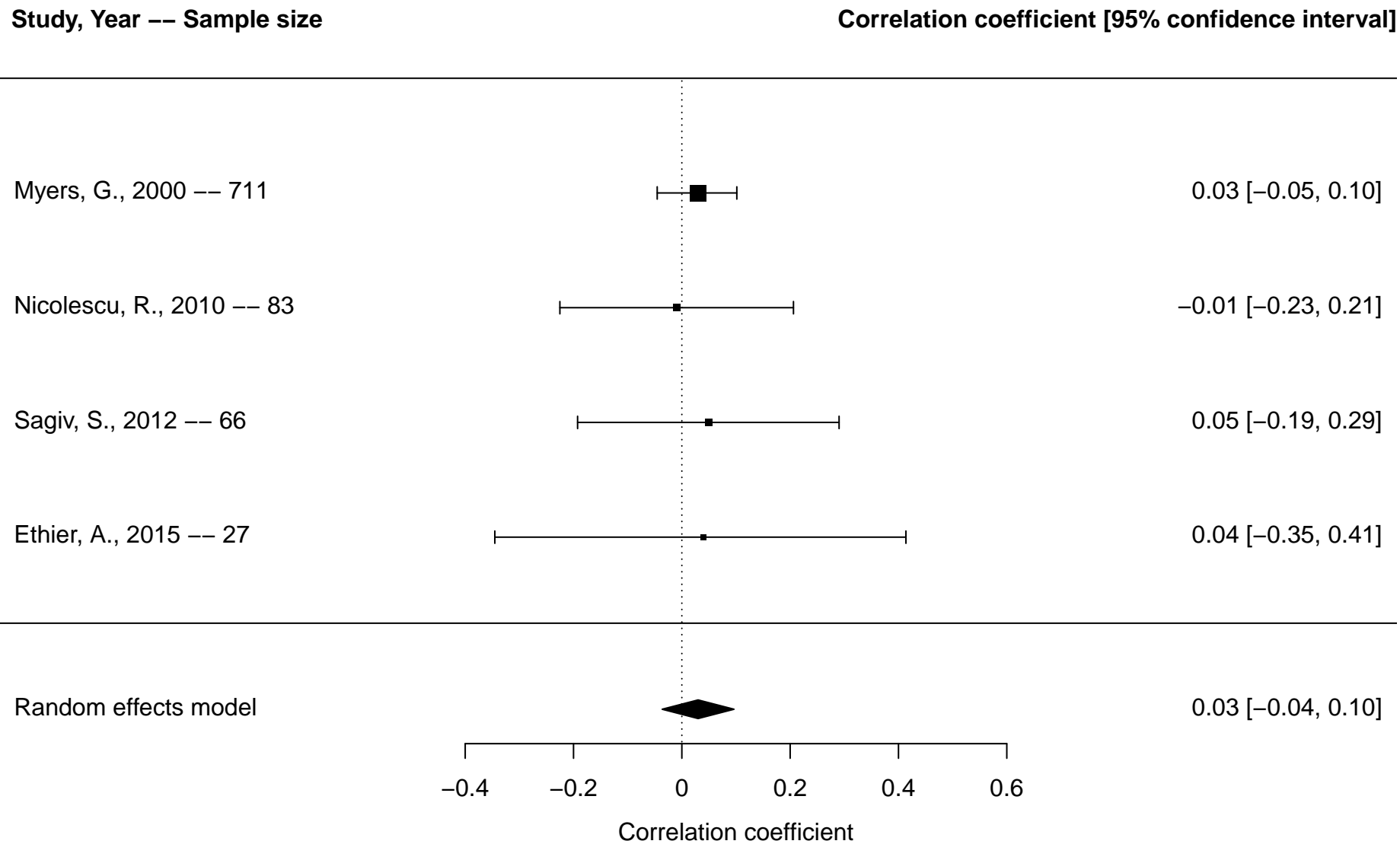
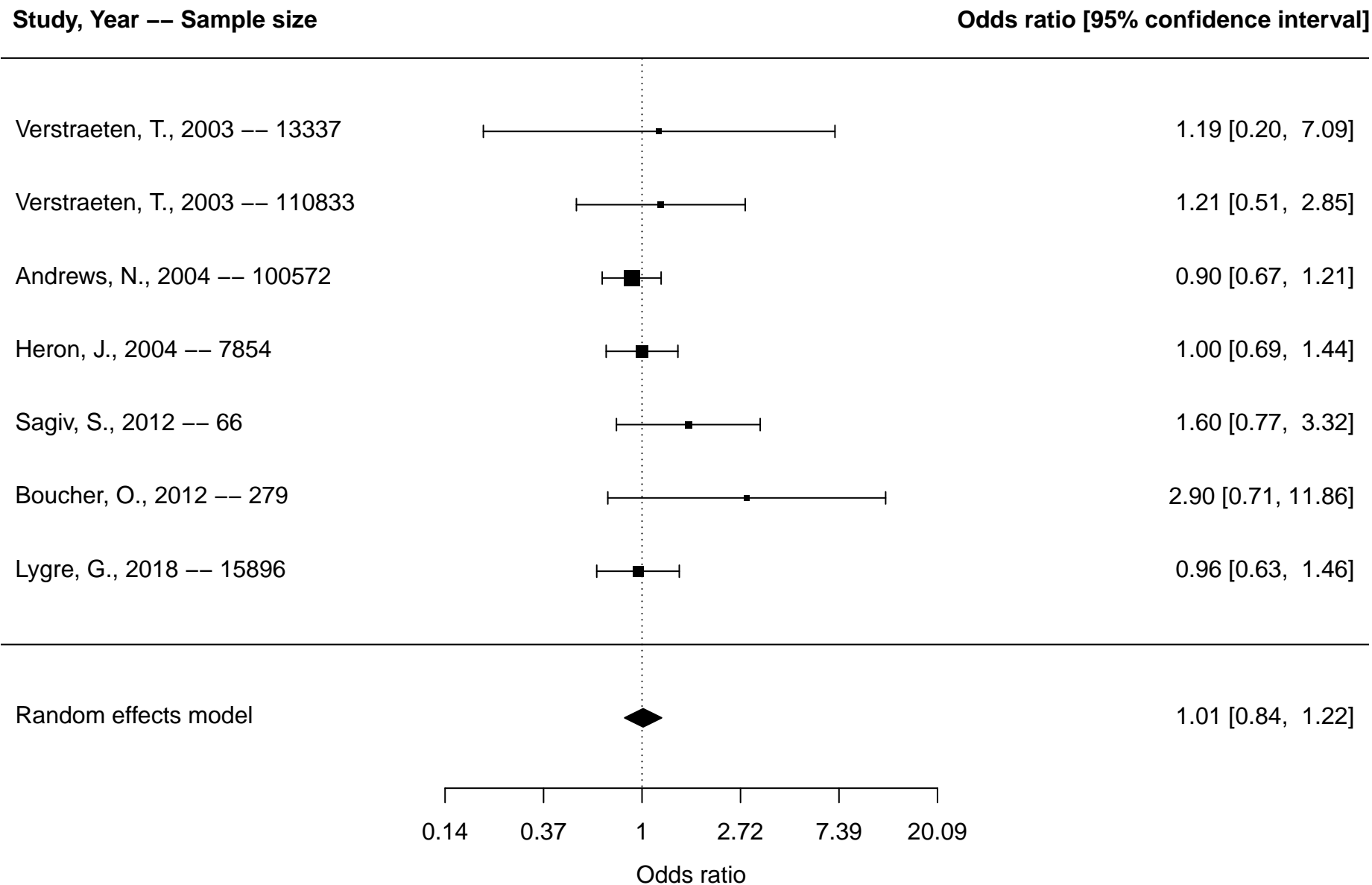


Figure S23. Forest plot of mercury exposure and attention-deficit/hyperactivity disorder (ADHD) overall* based on studies reporting dichotomous outcomes (sensitivity analysis excluding Geier studies)



*Overall includes studies reporting on any included ADHD outcomes (diagnosis, ADHD symptoms, inattention, hyperactivity/impulsivity)

Figure S24. Forest plot of mercury exposure and diagnosis only based on studies reporting dichotomous outcomes (sensitivity analysis excluding Geier studies)

Study, Year -- Sample size

Odds ratio [95% confidence interval]

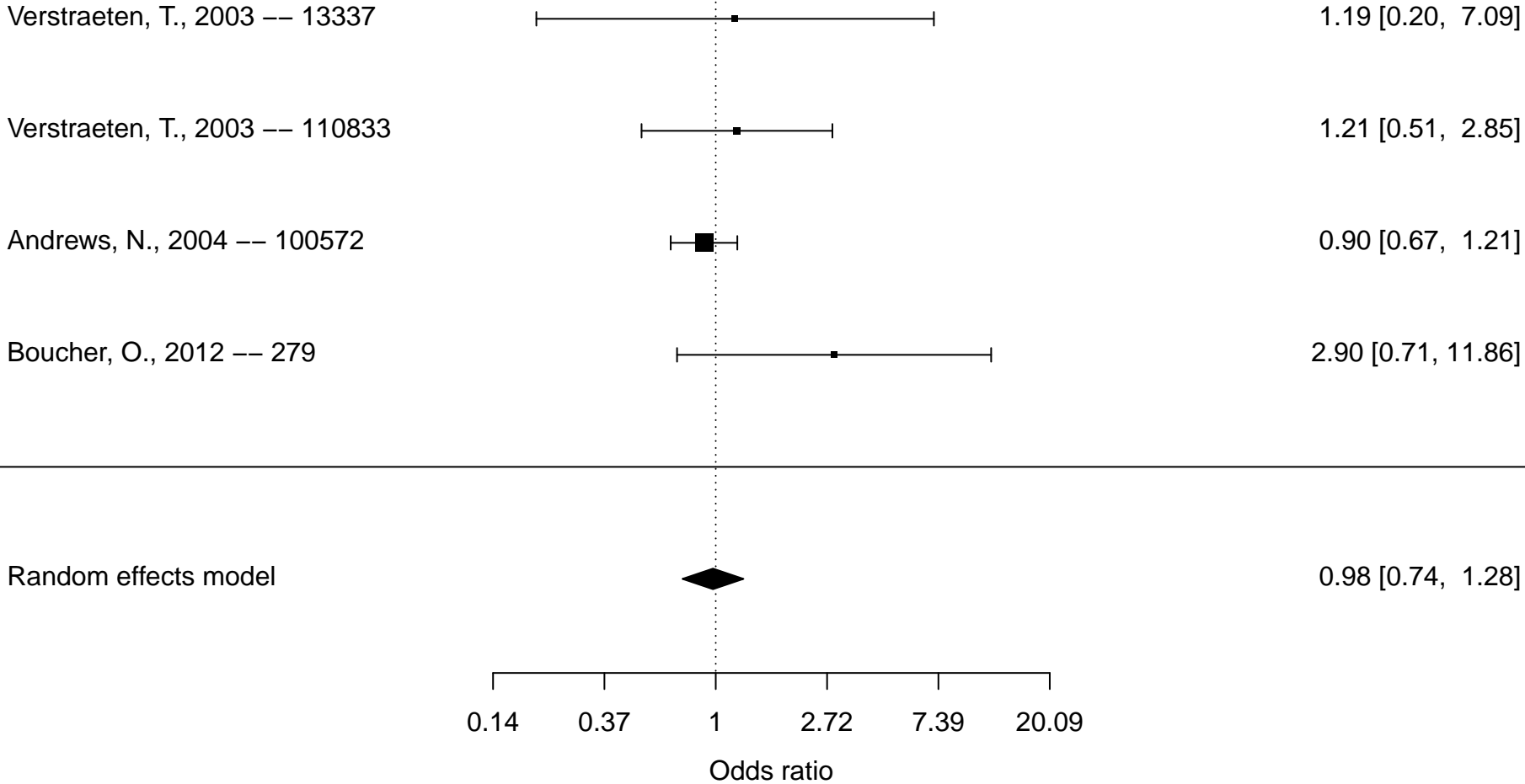
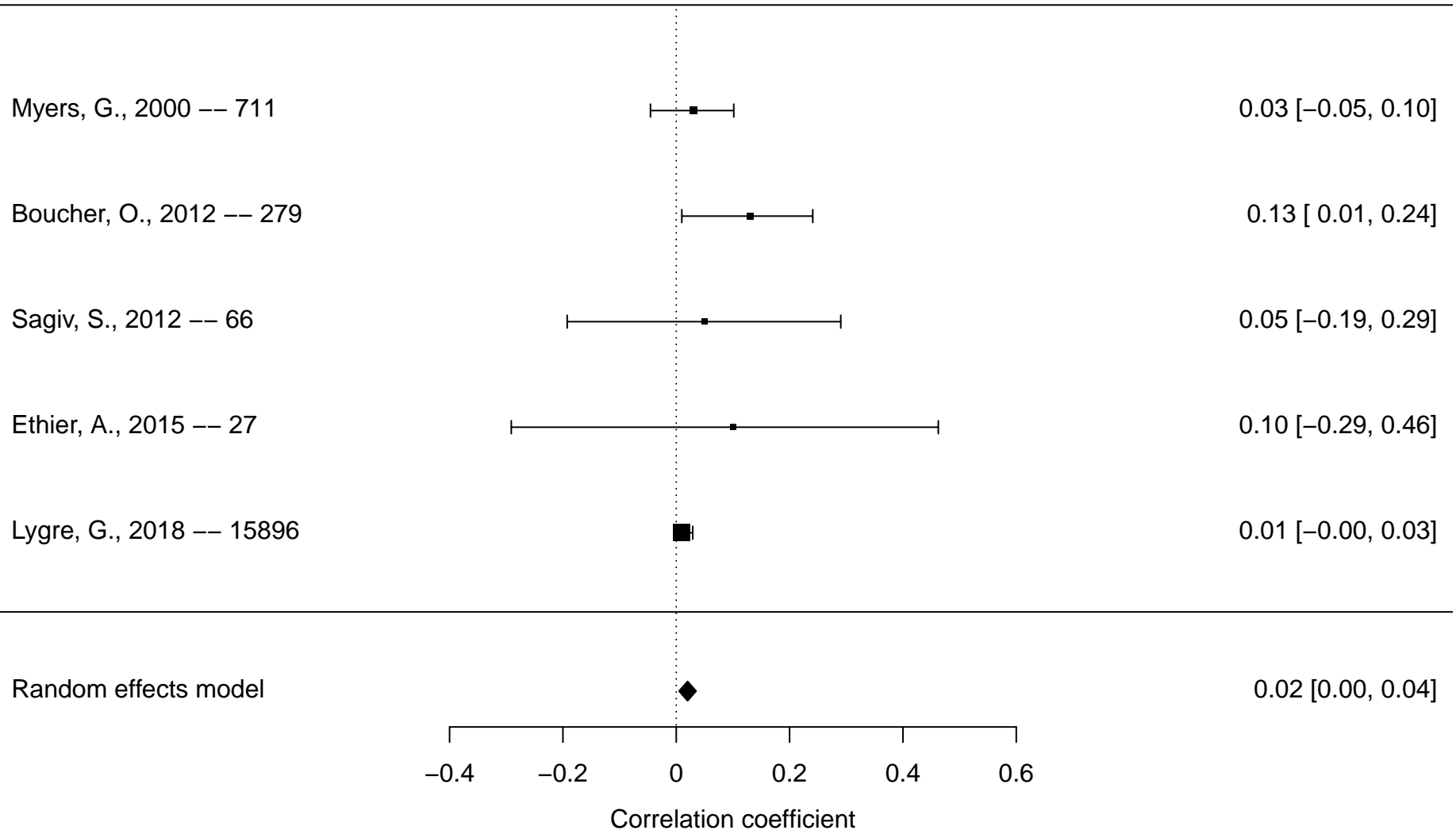


Figure S25. Forest plot of prenatal mercury exposure and attention-deficit/hyperactivity disorder (ADHD) overall* based on studies reporting continuous outcomes

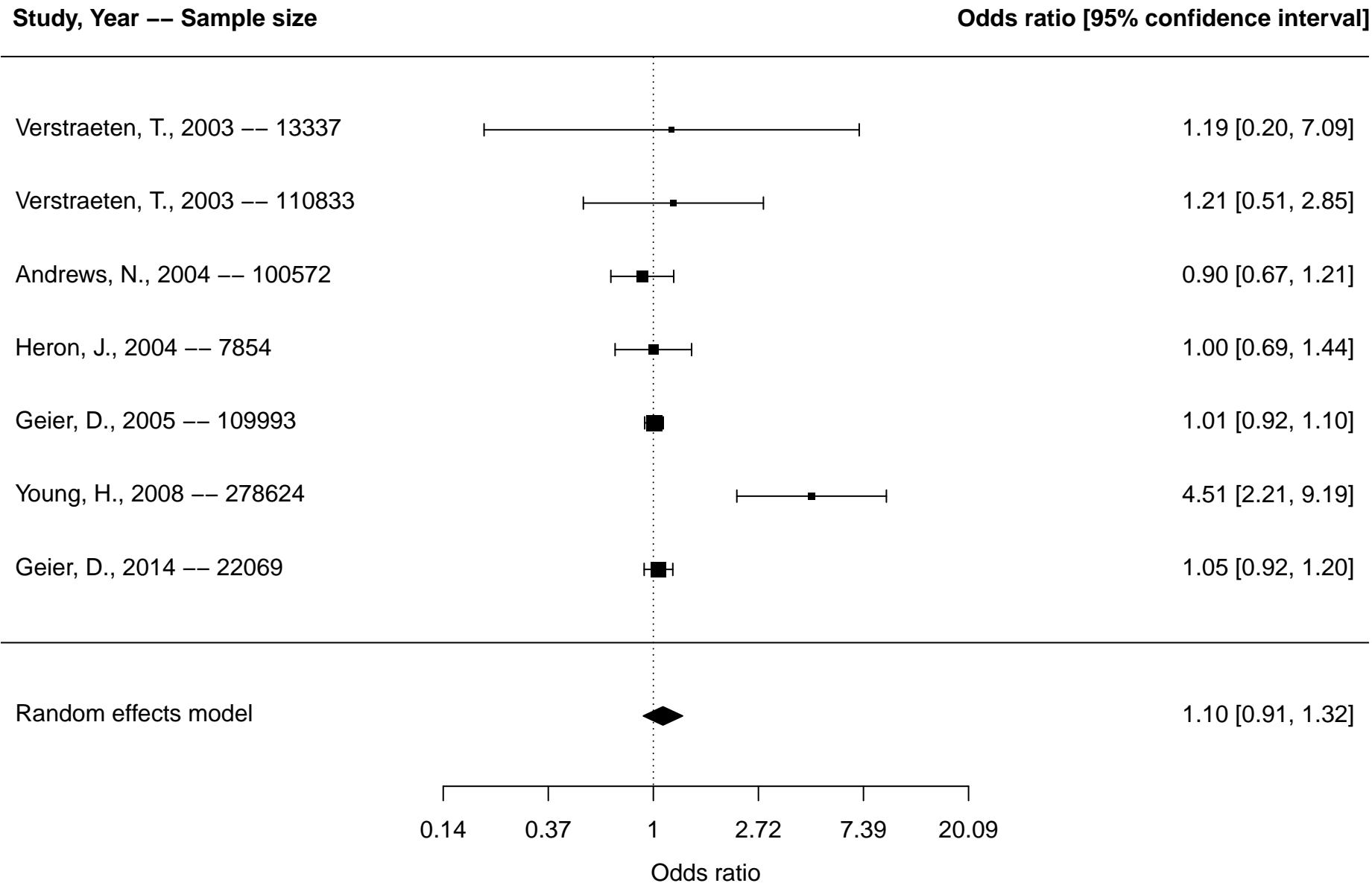
Study, Year -- Sample size

Correlation coefficient [95% confidence interval]



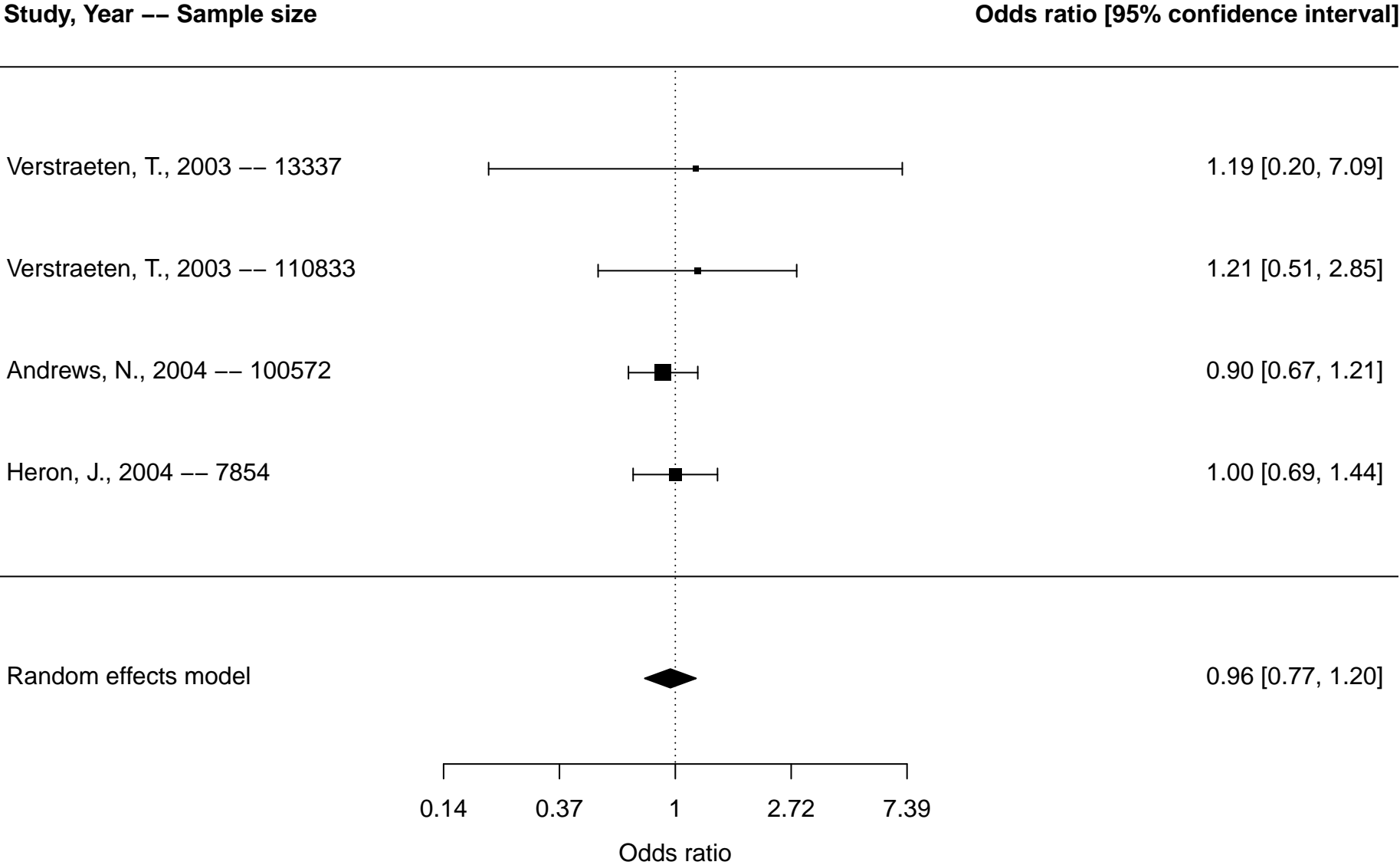
*Overall includes studies reporting on any included ADHD outcomes (diagnosis, ADHD symptoms, inattention, hyperactivity/impulsivity)

Figure S26. Forest plot of cumulative mercury exposure and attention-deficit/hyperactivity disorder (ADHD) overall* based on studies reporting dichotomous outcomes



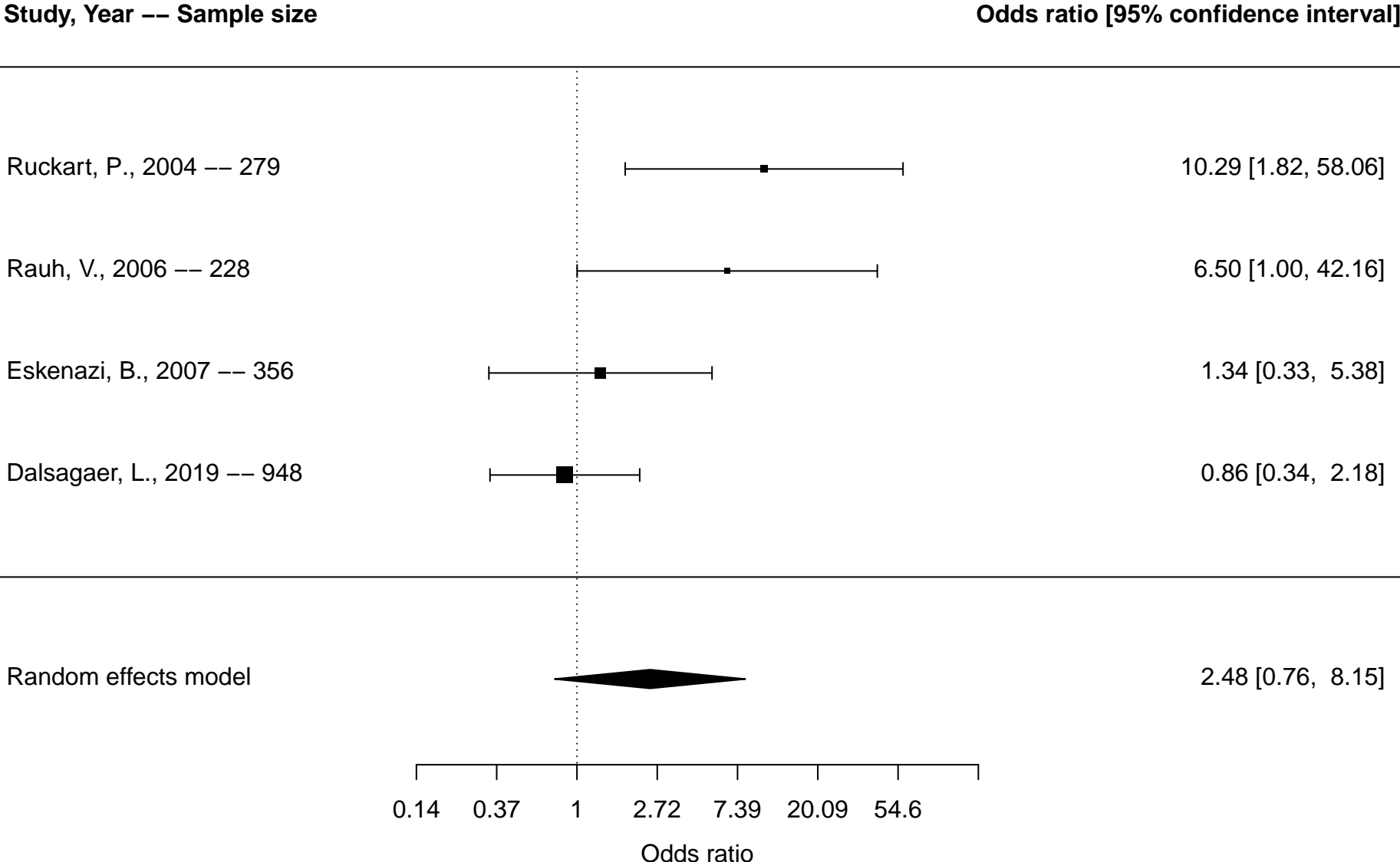
*Overall includes studies reporting on any included ADHD outcomes (diagnosis, ADHD symptoms, inattention, hyperactivity/impulsivity)

Figure S27. Forest plot of cumulative mercury exposure and attention-deficit/hyperactivity disorder (ADHD) overall* based on studies reporting dichotomous outcomes (sensitivity analysis excluding Geier studies)



*Overall includes studies reporting on any included ADHD outcomes (diagnosis, ADHD symptoms, inattention, hyperactivity/impulsivity)

Figure S28. Forest plot of organophosphate exposure and attention-deficit/hyperactivity disorder (ADHD) overall* based on studies reporting dichotomous outcomes



*Overall includes studies reporting on any included ADHD outcomes (diagnosis, ADHD symptoms, inattention, hyperactivity/impulsivity)

Figure S29. Forest plot of organophosphate exposure and inattention based on studies reporting dichotomous outcomes

Study, Year -- Sample size

Odds ratio [95% confidence interval]

Ruckart, P., 2004 -- 279



10.29 [1.82, 58.06]

Rauh, V., 2006 -- 228



11.26 [1.68, 75.26]

Eskenazi, B., 2007 -- 356

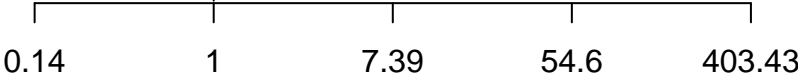


0.77 [0.18, 3.27]

Random effects model

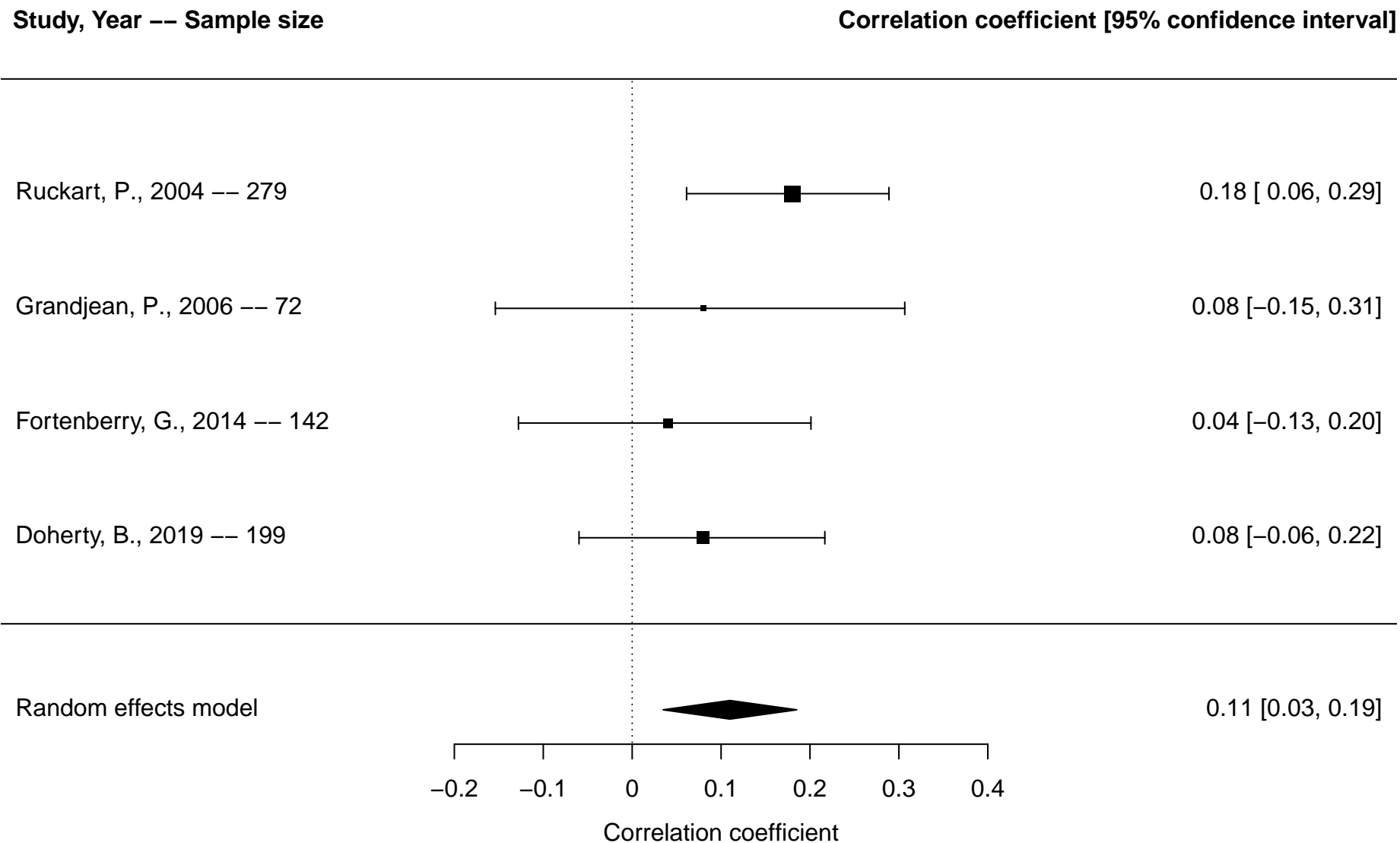


4.15 [0.66, 26.14]



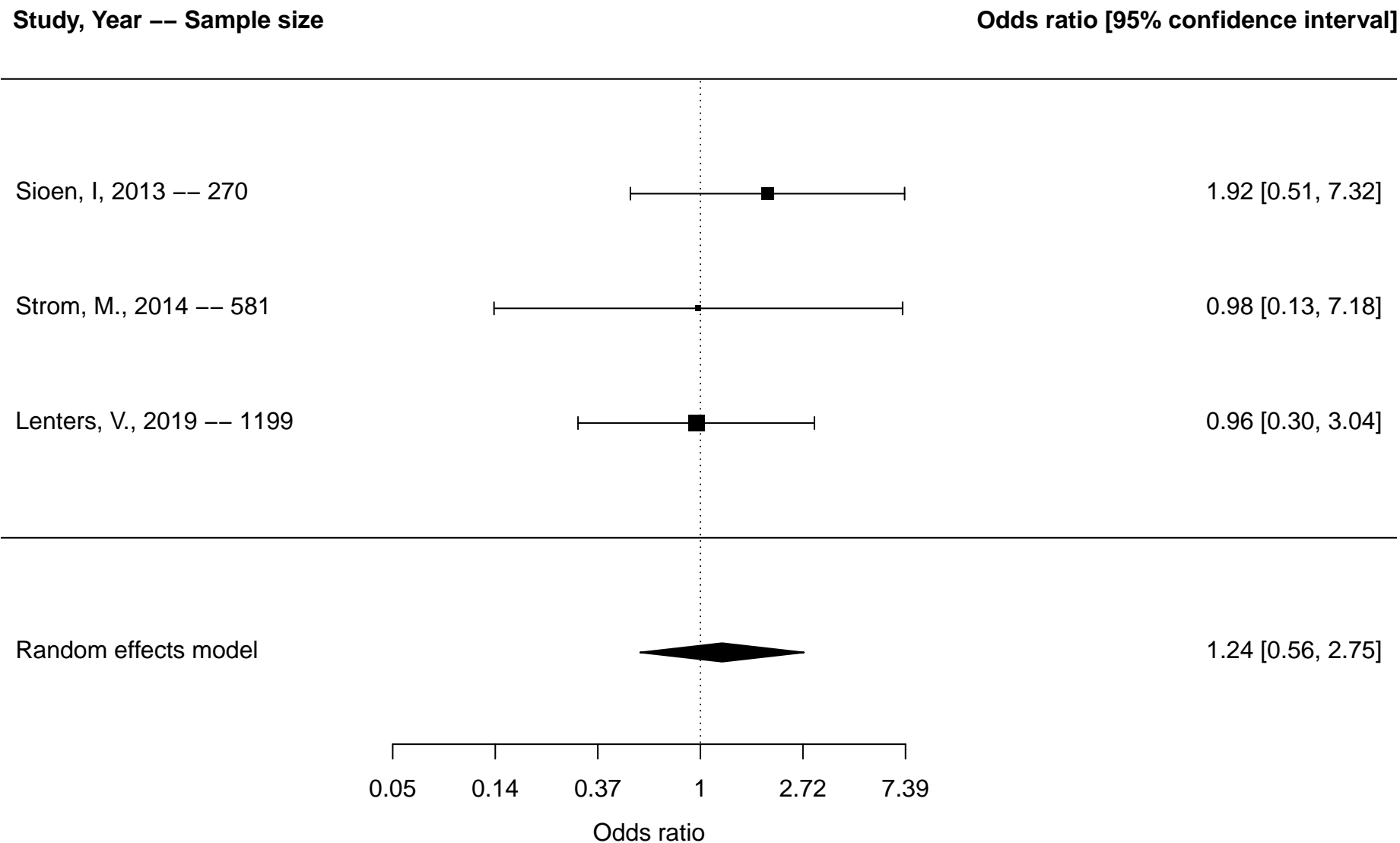
Odds ratio

Figure S30. Forest plot of organophosphate exposure and attention-deficit/hyperactivity disorder (ADHD) overall* based on studies reporting continuous outcomes



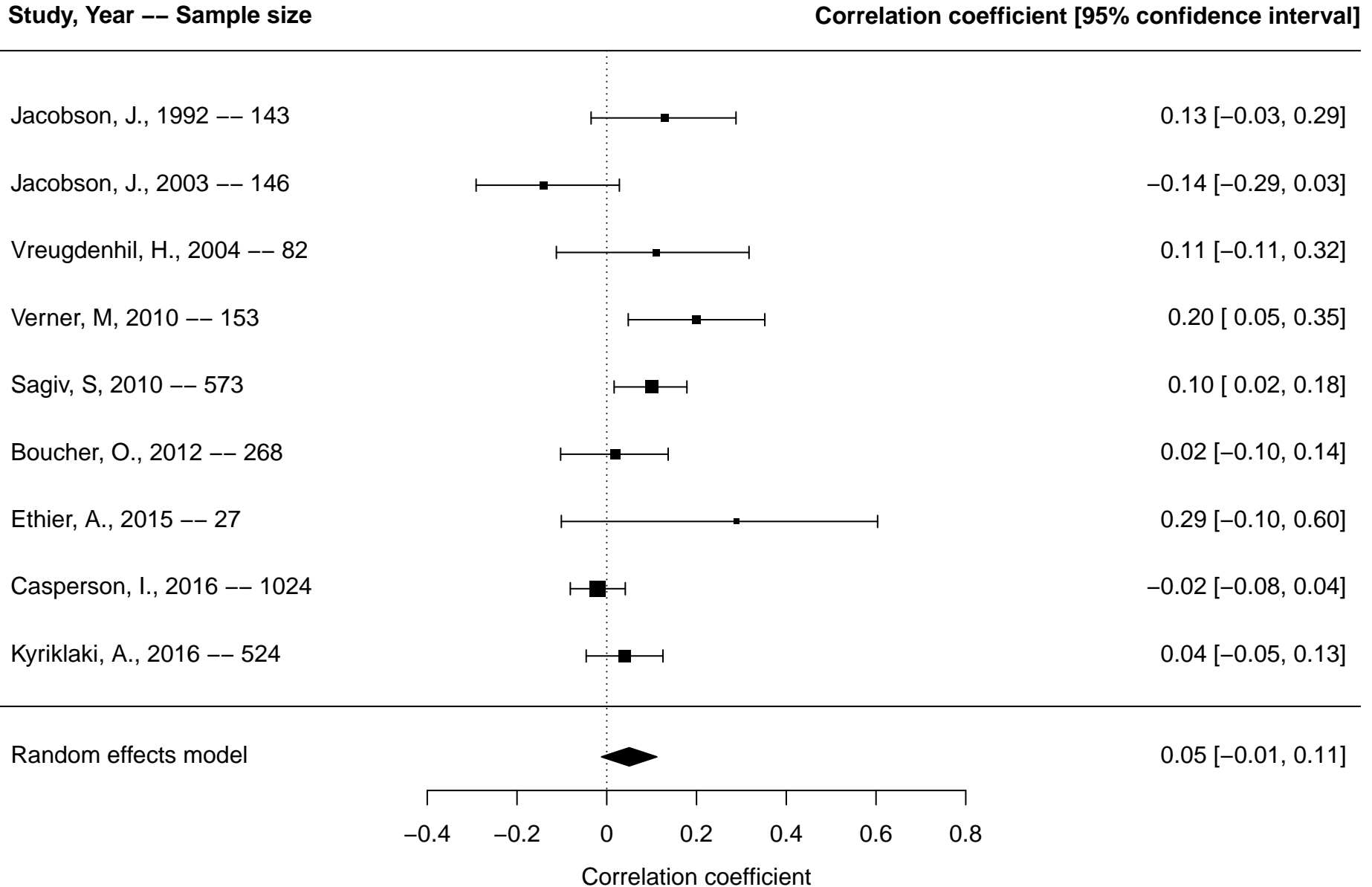
*Overall includes studies reporting on any included ADHD outcomes (diagnosis, ADHD symptoms, inattention, hyperactivity/impulsivity)

Figure S31. Forest plot of polychlorinated biphenyls and attention-deficit/hyperactivity disorder (ADHD) overall* based on studies reporting dichotomous outcomes



*Overall includes studies reporting on any included ADHD outcomes (diagnosis, ADHD symptoms, inattention, hyperactivity/impulsivity)

Figure S32. Forest plot of polychlorinated biphenyls and attention-deficit/hyperactivity disorder (ADHD) overall* based on studies reporting continuous outcomes



*Overall includes studies reporting on any included ADHD outcomes (diagnosis, ADHD symptoms, inattention, hyperactivity/impulsivity)

Figure S33. Forest plot of polychlorinated biphenyls and inattention based on studies reporting continuous outcomes

