

Additional File

Comparison Between Triglyceride Glucose Index and Modified Indices to Predict New-Onset Cardiovascular Disease in Middle-Aged and Older Adults

Cancan et. al,

Fig. S1-S4. **Fig. S1** [K–M plot of cardiovascular diseases by the tertile groups of TyG and modified indices]. **Fig. S2** [K–M plot of coronary heart diseases by the tertile groups of TyG and modified indices]. **Fig. S3** [K–M plot of stroke by the tertile groups of TyG and modified indices]. **Fig. S4** [Sex-specific time-dependent predictive capacity of TyG and modified indices for cardiovascular diseases, coronary heart disease and stroke]

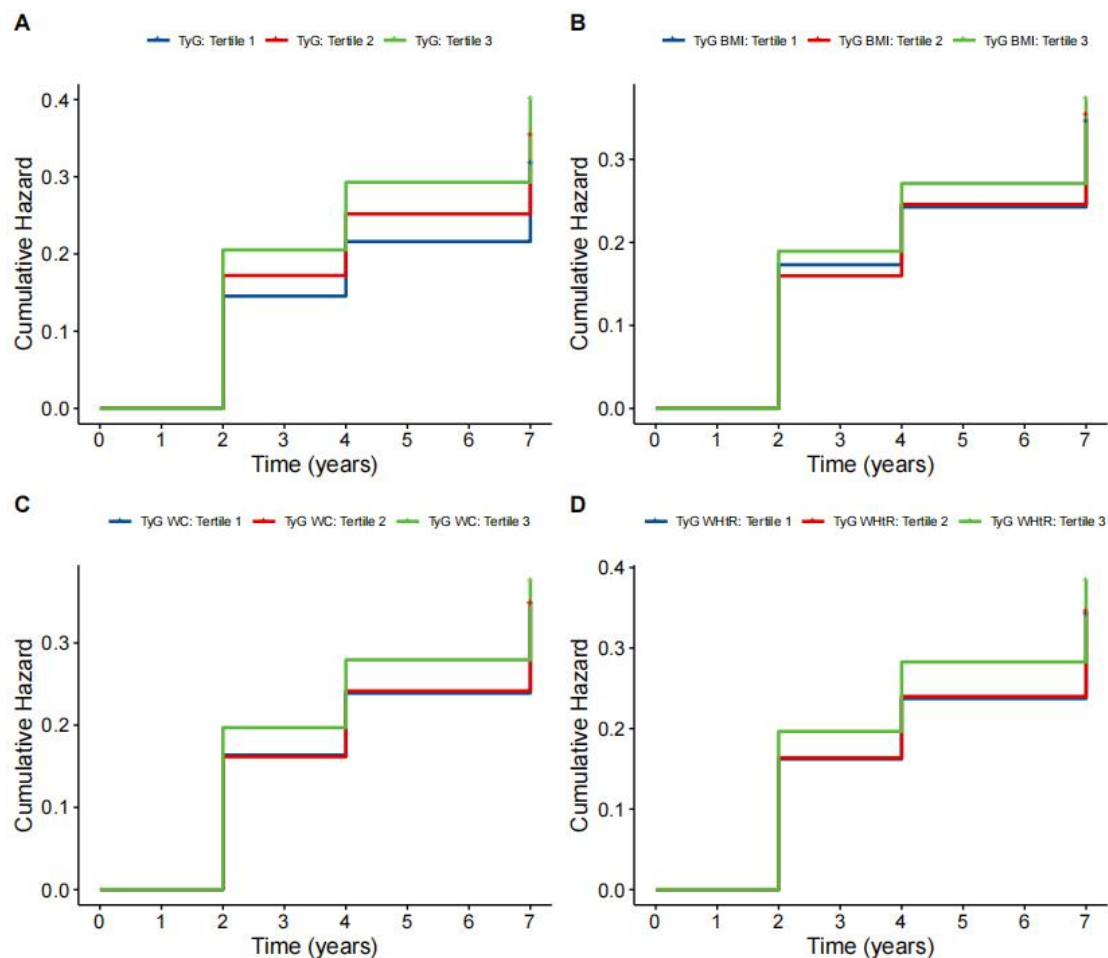


Fig. S1 [K–M plot of cardiovascular diseases by the tertile groups of TyG and modified indices].

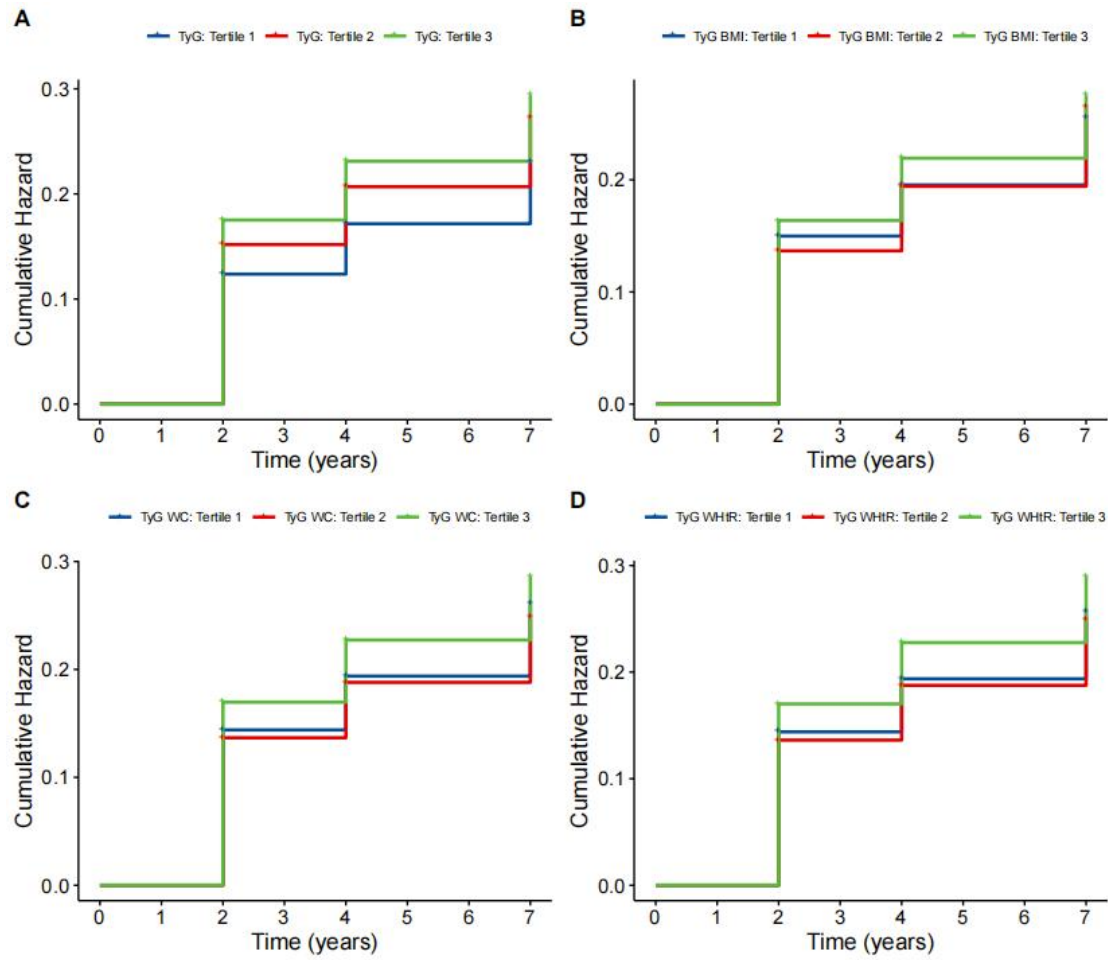


Fig. S2 [K–M plot of coronary heart diseases by the tertile groups of TyG and modified indices].

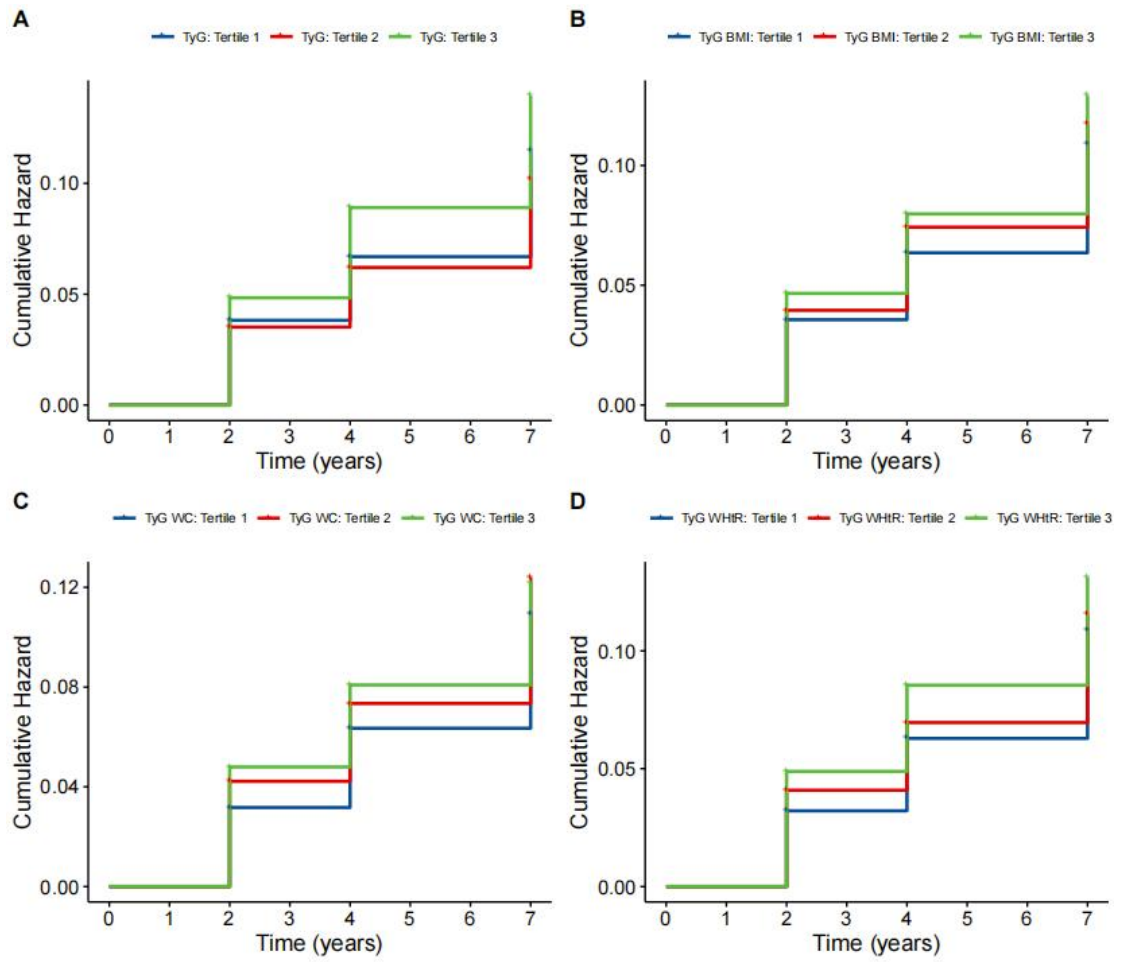


Fig. S3 [K-M plot of stroke by the tertile groups of TyG and modified indices].

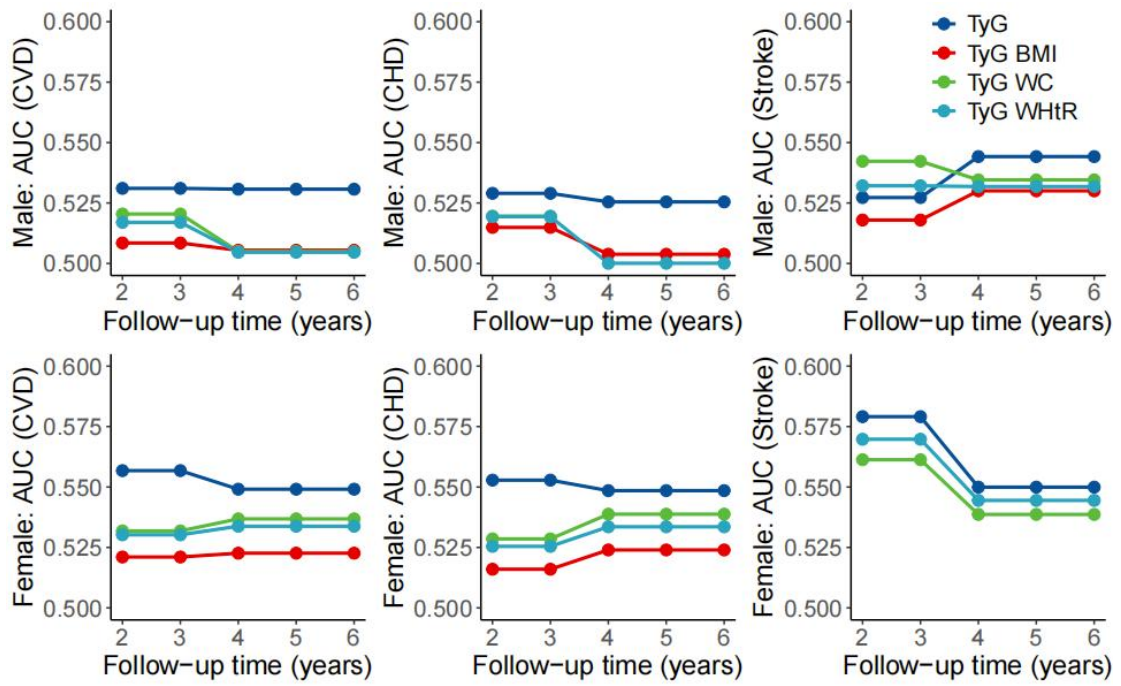


Fig. S4 [Sex-specific time-dependent predictive capacity of TyG and modified indices for cardiovascular diseases, coronary heart disease and stroke]