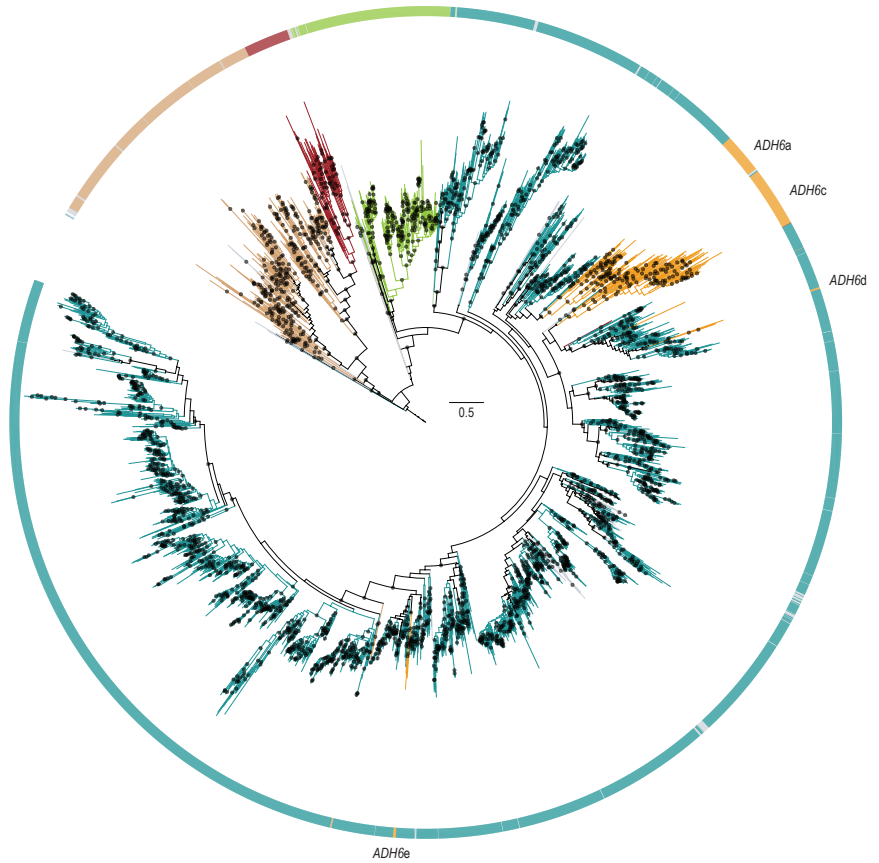


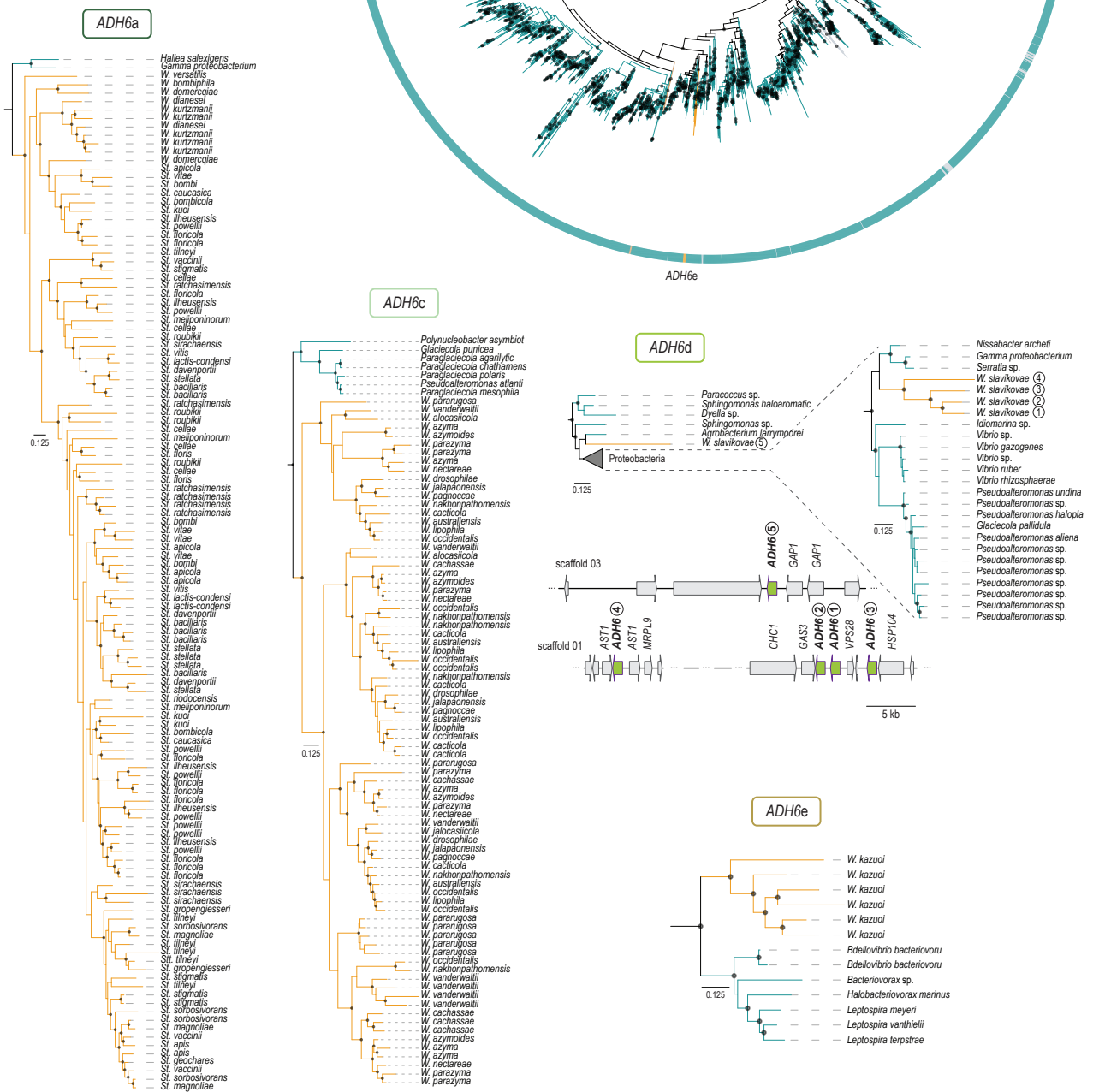
A

Key:

- Bacteria
- W/S clade
- Saccharomycotina
- Fungi
- Plantae/Viridiplantae
- Others



B



Supplementary Figure S2. Maximum-likelihood phylogeny of Adh6 proteins. (A) The different lineages are represented by different branch colors (red for Saccharomycotina, light brown for other Fungi (i.e., non-Saccharomycotina), orange W/S clade and blue for bacteria). Poorly represented lineages (< 10 sequences) are shown in grey. Branches with bootstrap support higher than 95% are indicated by black dots. (B) Pruned maximum-likelihood phylogenies of Adh6 proteins depicting the phylogenetic relationship between the W/S clade and closest species. Genomic context and position is given for the multiple copies of Adh6d.