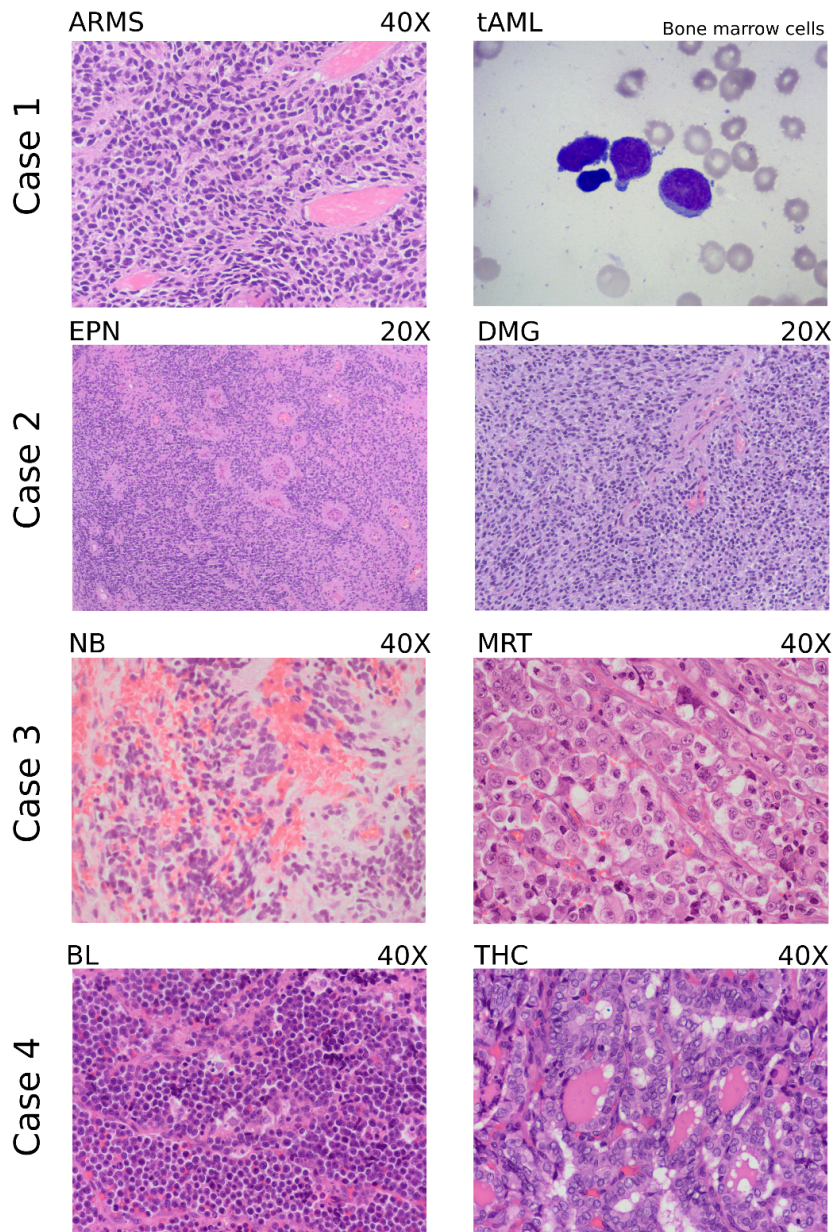
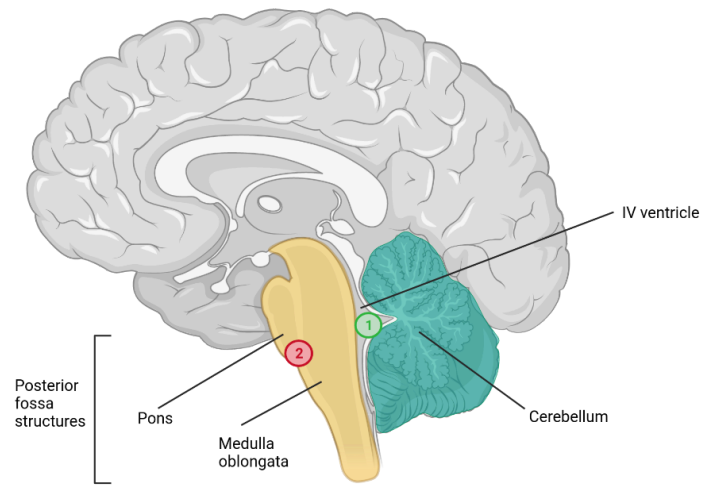


# Supplementary Figure 1

A



B



## Supplementary Figure 1. Histopathology (H&E) analysis of tumor samples from cases 1, 2, 3 and 4.

A) Case 1 Alveolar Rhabdomyosarcoma (ARMS) and treatment-related Acute Myeloid Leukemia (tAML); Case 2 Ependymoma (EPN) and Diffuse Midline Glioma (DMG); Case 3 Neuroblastoma (NB) and Malignant Rhabdoid Tumor (MRT); Case 4 Burkitt Lymphoma (BL) and Thyroid Carcinoma (THC); B) Case 2 specific location in the brain of both the EPN (1, in the IVth ventricle) and DMG (2, in the right ponto-bulbar angle).