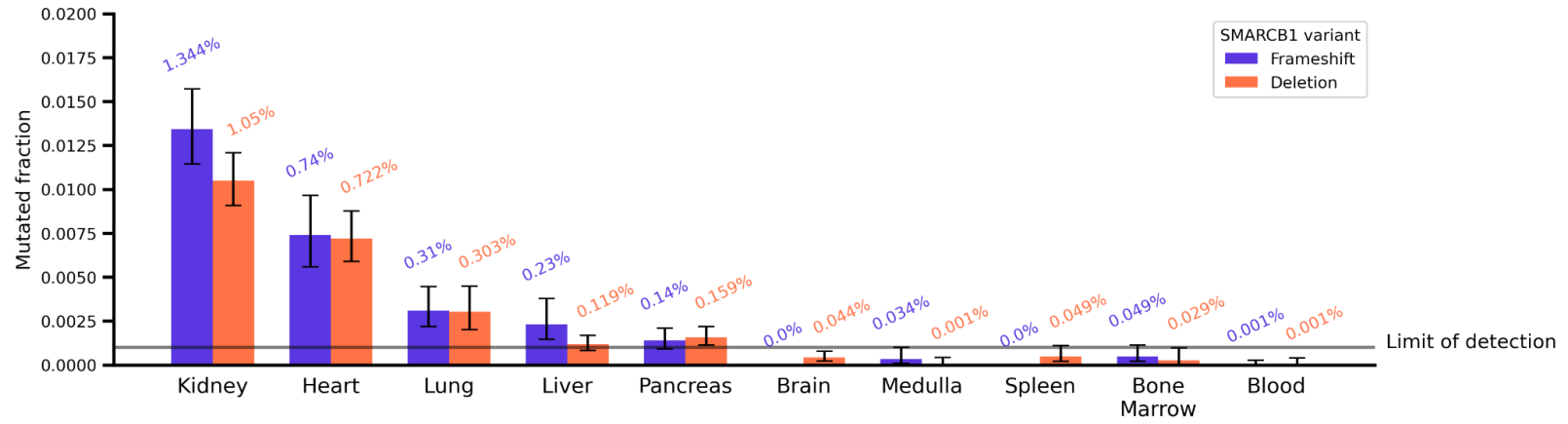


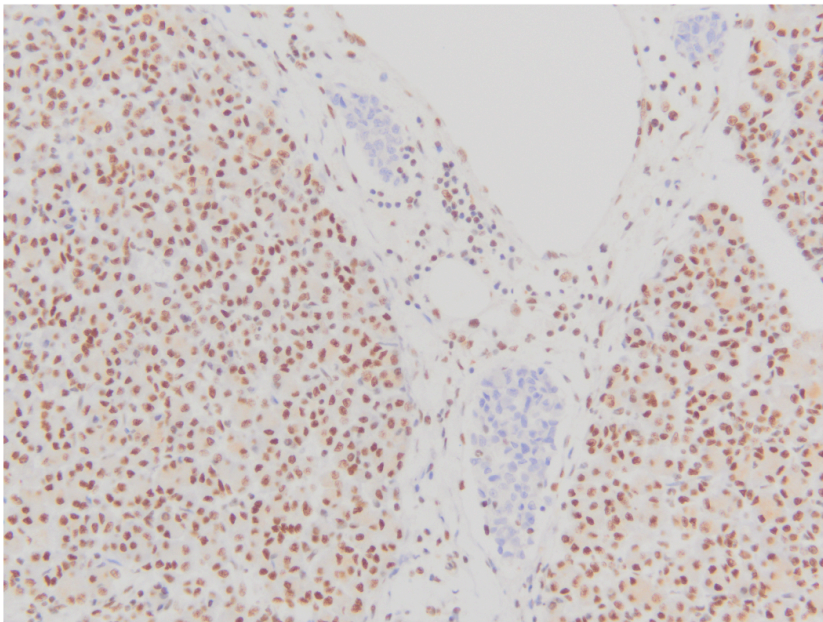
Supplementary Figure 8

A

SMARCB1 variant detection by digital PCR



B



INI1 IHC
Pancreas

Supplementary Figure 8. SMARCB1 null cells identified in normal tissues of case 3.

A) Results of digital PCR for the two *SMARCB1* mutations across 10 normal tissues of case 3. B) Immunohistochemistry (IHC) INI1 protein in normal pancreas tissue. This demonstrates the presence of MRT cells infiltrating the normal tissue.