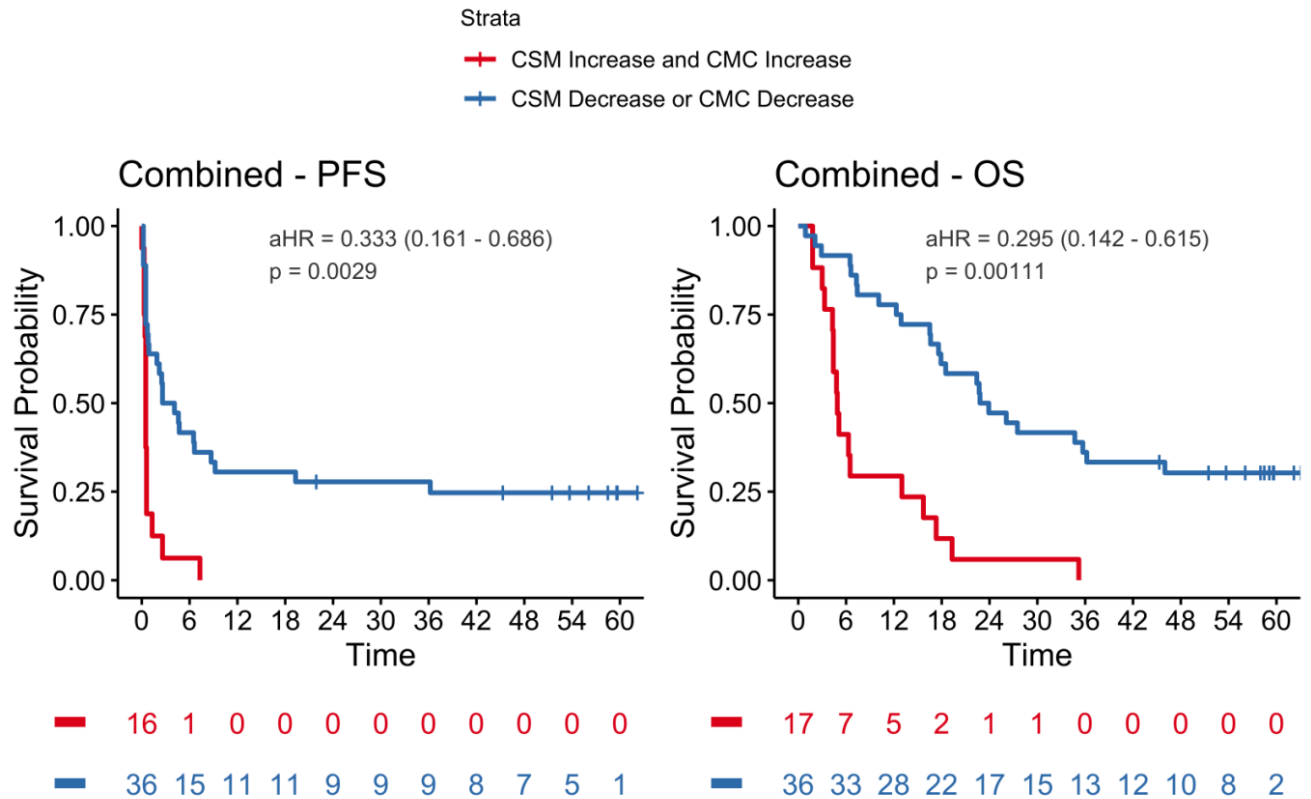


Supplementary Figure 13



Supplementary Figure 13. Increase in both ctDNA metrics identifies a subgroup with particularly poor outcome. Post-hoc analysis of Δ CSM and Δ CMC together demonstrates that a decrease in either metric was sufficient to result in significantly improved PFS and OS, whereas increase in both metrics identified a group with particularly poor outcomes. PFS analysis at cycle 3 excludes one patient who progressed before the collection of cycle 3 sample.