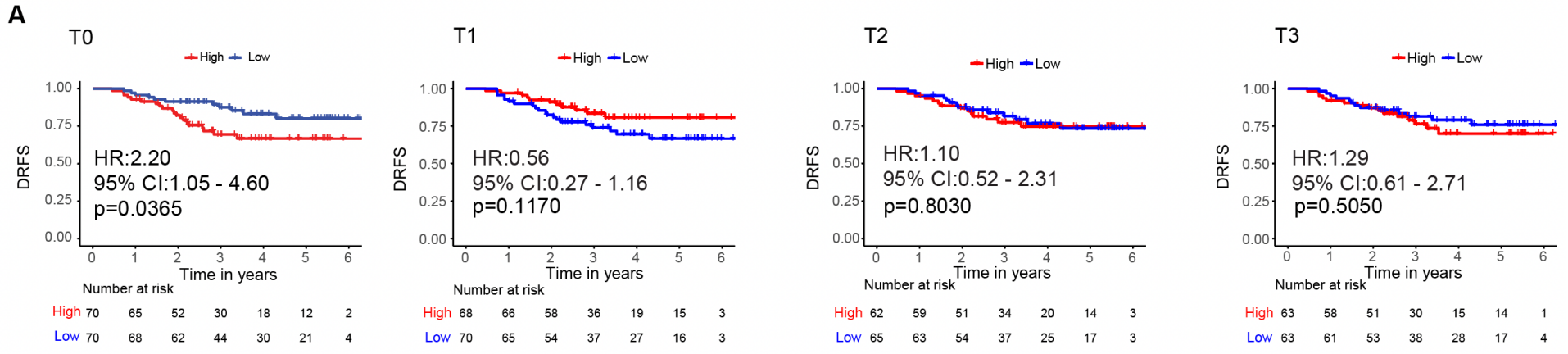
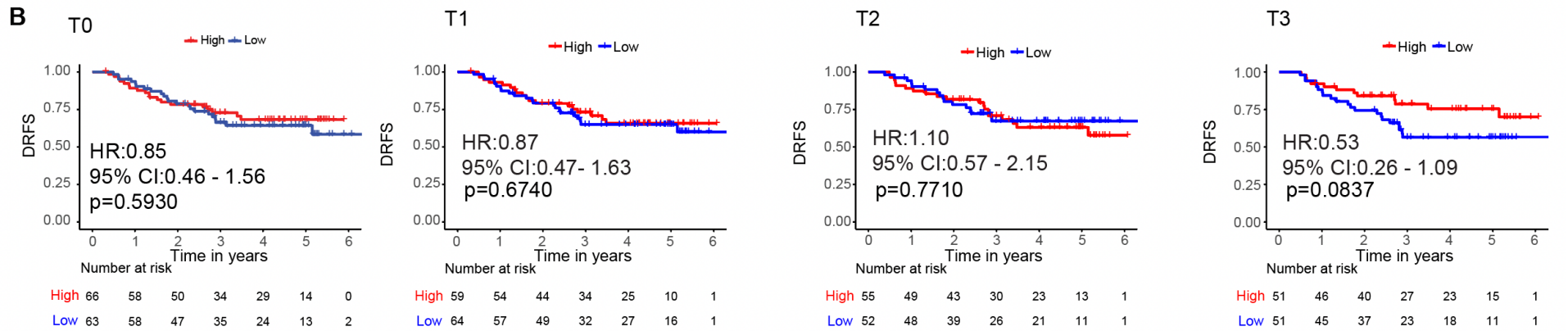


HR+HER2-



TNBC



Supplementary Figure 6. Survival curves of patients stratified into two groups, cfDNA high shedders vs. cfDNA low shedders. CfDNA concentration was measured in the plasma of patients with **A.** hormone receptor-positive HER2-negative (HR+HER2-) and **B.** triple-negative breast cancer (TNBC). The median cfDNA concentration was used as the cutoff to stratify patients into high vs. low cfDNA-shedders. The survival endpoint was distant recurrence-free survival (DRFS). P values were calculated using the Wald test. Blood was collected at pretreatment (T0), 3 weeks after treatment initiation (T1), 12 weeks after treatment initiation between paclitaxel-based treatment and anthracycline regimens (T2), and after neoadjuvant chemotherapy before surgery (T3).