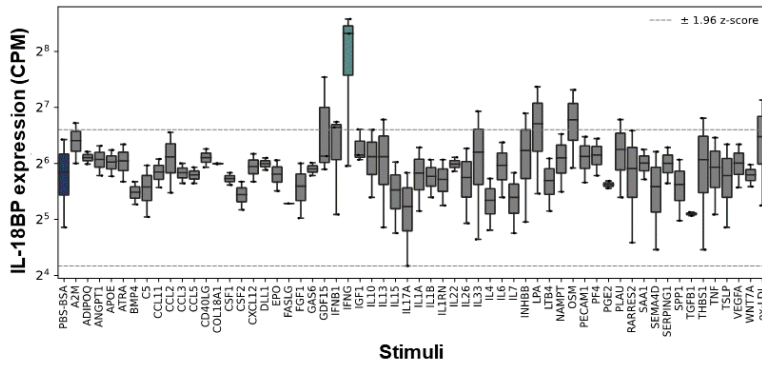
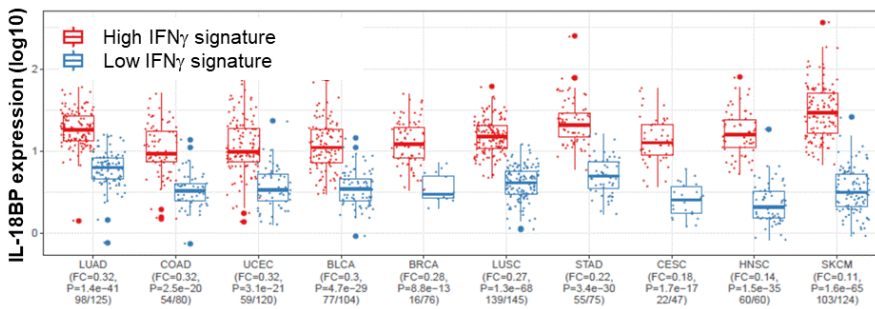
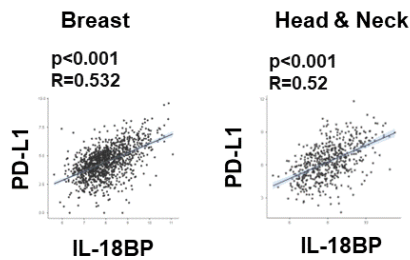


A**B****C**

Supplemental Figure S1. IL-18BP is a potential soluble immune checkpoint in cancer. (A)

Expression levels on IL18BP in macrophages treated in-vitro with various stimuli (GSE202515, 3 donors). Dotted lines indicate high and low Z-score range with 95% confidence. **(B)** IL18BP expression across tumor types in inflamed (red boxes) and non-inflamed (blue boxes) tumors defined by high IFN γ signature expression. Statistical analysis was performed using two-tailed t test. **(C)** IL18BP correlation to PD-L1 across tumor types. Representative examples in Breast and Head & Neck tumors are shown (Pearson correlation, see Supplemental Table 7 across multiple indications). Medians are marked by thick lines while the lower and upper hinges correspond to the first and third quartiles (the 25th and 75th percentiles). The whiskers extend to the farthest value no further than 1.5 times the inter-quartile range from the nearest hinge. FC- fold change.