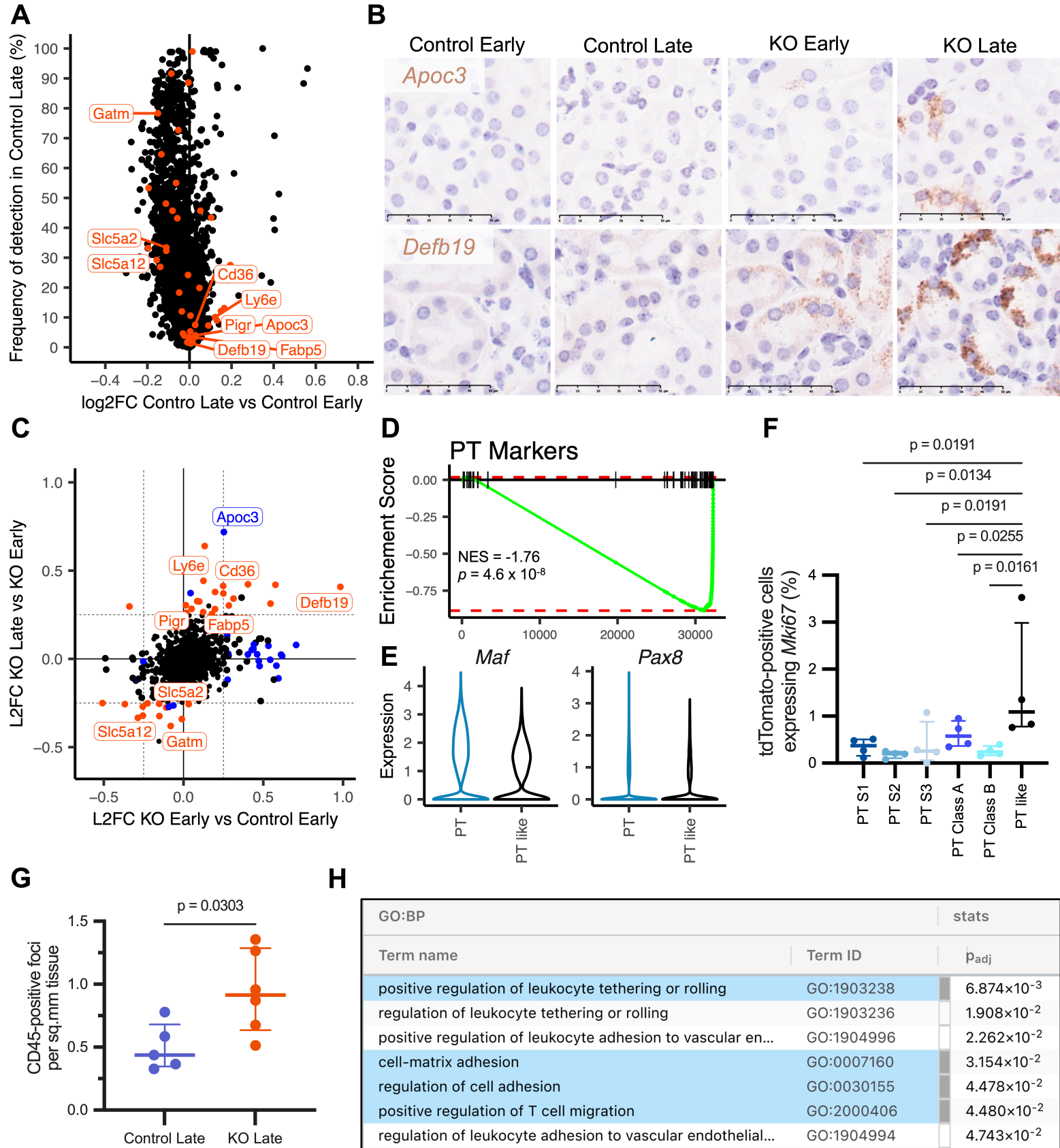


## Supplementary Figure S3



**Supplementary Figure S3: *Vhl*-null cells specifically undergo time-dependent alterations in gene expression.** (A) Scatter plot depicting frequency of expression in tdTomato-positive cells from Control mice at the late timepoint against log<sub>2</sub>-fold change (log<sub>2</sub>FC) between cells from Control mice at the late *versus* early timepoints for all genes. Genes specifically regulated over time in *Vhl*-null cells (orange; from Fig 5C). Genes explicitly mentioned in the main text are labelled. (B) Representative *in situ* RNA hybridization for *Apoc3* (top) and *Defb19* (bottom) mRNA in kidneys from Control and KO mice harvested at the early and late timepoints (at least n = 2F, 1M per timepoint for both transcripts). Scale bar denotes 50 μm; 40x magnification. (C) Scatter plot depicting log<sub>2</sub>-fold change (L2FC) in *Vhl*-null cells over time against log<sub>2</sub>-fold change early after *Vhl* inactivation for all genes. Genes regulated over time (orange). HIF target genes (blue). Genes explicitly mentioned in the main text are labelled. (D) Gene set enrichment plot depicting downregulation of PT marker genes in PT-like cells compared to PT cells at the late timepoint. NES = Normalized Enrichment Score. p value adjusted by Bonferroni correction for multiple testing. (E) Violin plots depicting expression of *Maf* and *Pax8* in *Vhl*-null PT or PT like cells at the late timepoint. (F) Proportion of tdTomato-positive cells of any PT identity that express *Mki67* from kidneys of KO mice harvested at the late timepoint (n = 2F, 2M). Pairwise comparisons by one-way ANOVA with Holm-Šídák correction. (G) Number of foci of leukocytes observed per mm<sup>2</sup> of renal cortex and outer medulla in Control (n = 1F, 4M) and KO (n = 6M) mice harvested at the late timepoint. Pairwise comparison by Mann-Whitney test. (H) Significantly enriched Gene Ontology terms for genes upregulated over time in tdTomato-negative macrophages in KO samples. Results from gProfiler. (F, G) Median and inter-quartile range plotted.