

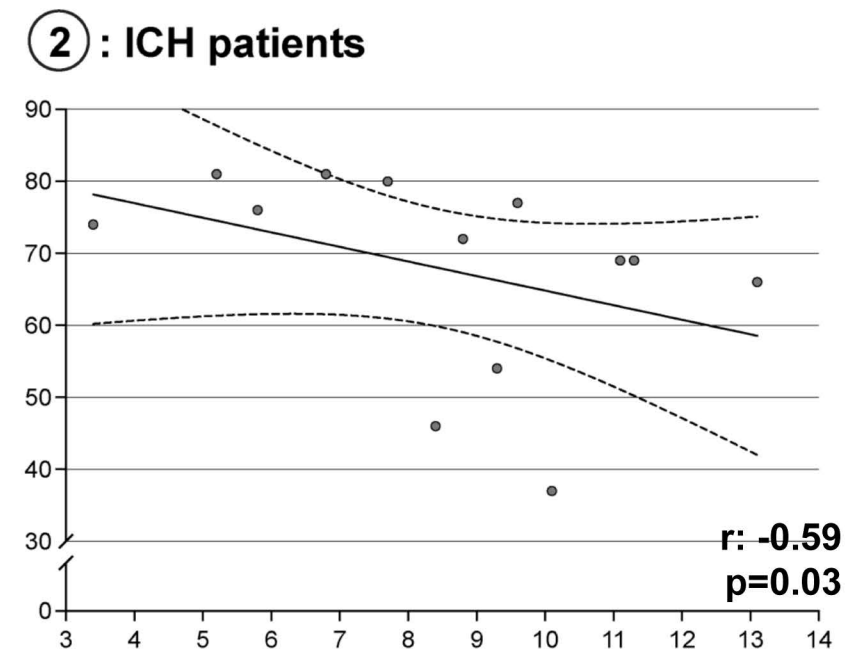
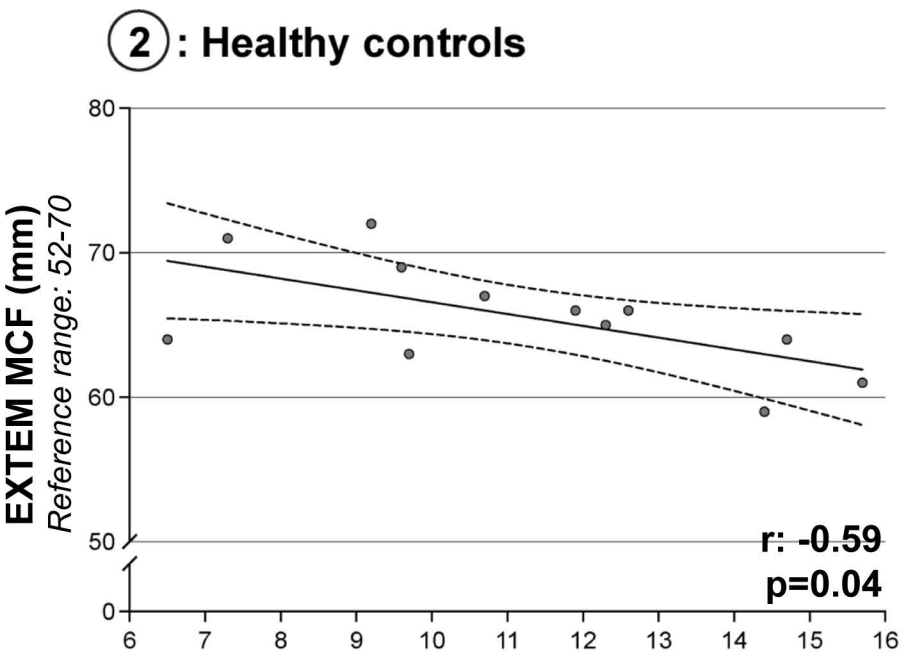
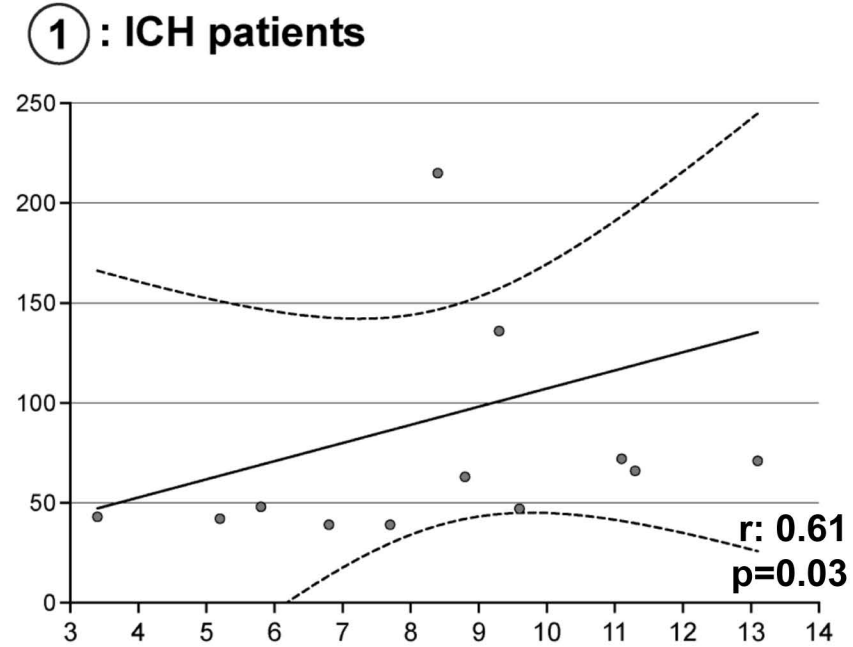
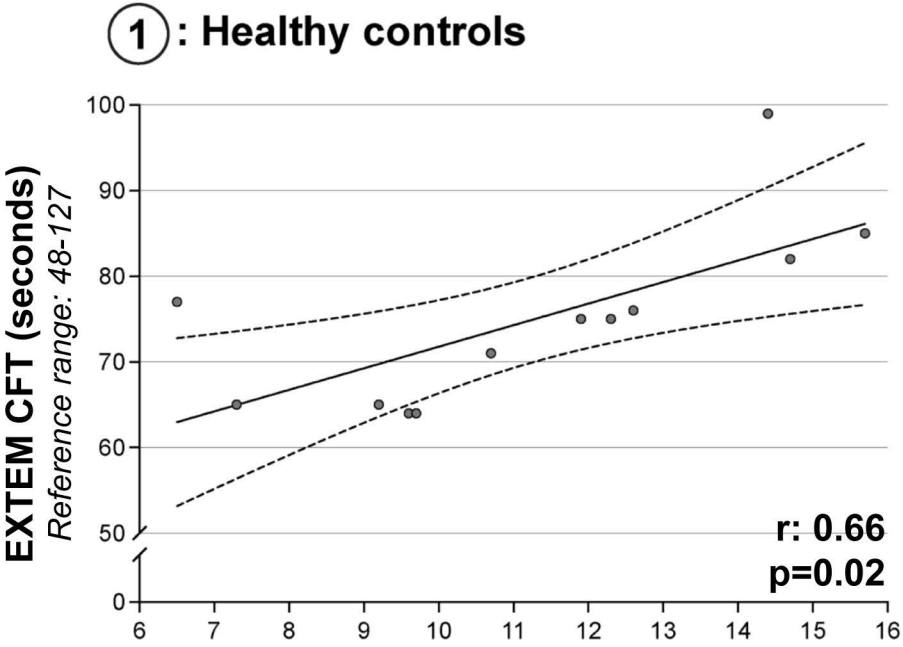
Supplemental table 1: Baseline surgical ICU cohort characteristics	ROTEM SICU cohort N=121
Age: mean (SD)	64 (18)
Male: N (%)	59 (49)
Race/ethnicity: N (%)	
White	67 (55)
Black	16 (13)
Hispanic	18 (15)
Other	12 (10)
Surgery type: N (%)	
Neurosurgery (brain/spine)	40 (33)
Gastrointestinal (non-liver)	33 (27)
Orthopedic	26 (21)
Liver	7 (6)
Other	15 (13)
Baseline Hemoglobin (g/dL): mean (SD)	10.9 (1.4)
Traditional Coagulation Laboratory Testing: mean (SD)	
International Normalized Ratio	1.2 (0.1)
Partial Thromboplastin Time (seconds)	30.4 (5.1)
Platelet Count (10 ³ /uL)	208 (60)
ROTEM testing: median (IQR)	
EXTEM CT (sec)	48 (42-58)
EXTEM CFT (sec)	70 (73-79)
EXTEM alpha (deg)	76 (73-79)
EXTEM MCF (mm)	67 (63-71)
INTEM CT (sec)	163 (152-176)
INTEM CFT (sec)	61 (51-70)
INTEM alpha (deg)	78 (76-80)
INTEM MCF (mm)	64 (61-68)
FIBTEM MCF (mm)	17 (14-22)
ROTEM: Rotational Thromboelastometry; SD: standard deviation; SBP: systolic blood pressure; IQR: interquartile range; EXTEM: extrinsic pathway assay; INTEM: intrinsic pathway assay; FIBTEM: fibrinogen assay; CT: coagulation time; CFT: clot formation time; MCF: maximal clot firmness	

Supplemental table 2: Univariable and multivariable linear regression assessing association of hemoglobin with ROTEM VHA result in surgical ICU patients

ROTEM Outcome	Unadjusted B (95%CI) p-value	Adjusted B (95%CI) p-value*
EXTEM CT (seconds)	-0.04 (-2.82 to 1.90) P=0.70	-0.06 (-3.42 to 1.83) P=0.55
EXTEM CFT (seconds)	0.31 (2.32 to 8.36) P=0.001	0.31 (2.44 to 8.97) P=0.001
EXTEM alpha (degrees)	-0.36 (-1.81 to -0.66) P<0.0001	-0.37 (-1.92 to -0.68) P<0.0001
EXTEM MCF (millimeters)	-0.36 (-2.14 to -0.77) P<0.0001	-0.35 (-2.22 to -0.75) P<0.0001
EXTEM ML (%)	NA	NA
INTEM CT (seconds)	0.14 (-0.77 to 5.82) P=0.13	0.14 (-0.92 to 6.21) P=0.14
INTEM CFT (seconds)	0.33 (1.89 to 6.19) P<0.0001	0.32 (1.86 to 6.48) P=0.001
INTEM alpha (degrees)	-0.38 (-1.23 to -0.45) P<0.0001	-0.37 (-1.29 to -0.45) P<0.0001
INTEM MCF (millimeters)	-0.41 (-2.32 to -0.94) P<0.0001	-0.39 (-2.42 to -0.95) P<0.0001
INTEM ML (%)	NA	NA
FIBTEM MCF (millimeters)	-0.35 (-3.01 to -1.06) P<0.0001	-0.39 (-3.42 to -1.32) p<0.0001

ROTEM: Rotational Thromboelastometry; VHA: viscoelastic hemostatic assay; CI: confidence interval; EXTEM: extrinsic pathway assay; INTEM: intrinsic pathway assay; FIBTEM: fibrinogen assay; CT: coagulation time; CFT: clot formation time; MCF: maximal clot firmness; ML: maximum lysis

*Adjusted for age, sex, surgery type



Supplemental Figure 1: in vitro study Hgb-ROTEM correlations

Hemoglobin (g/dL)
Range male: 13.3-16.2, female: 12.0-15.8