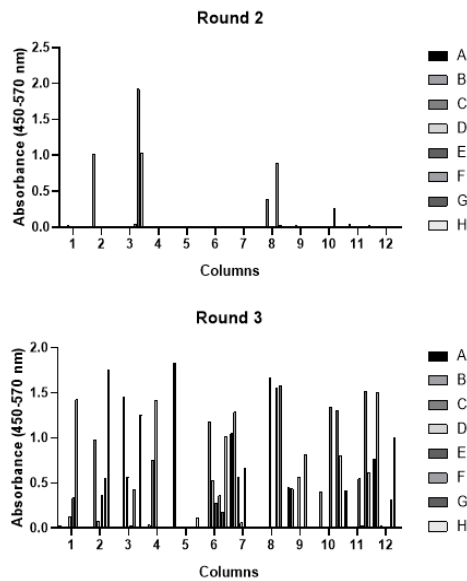
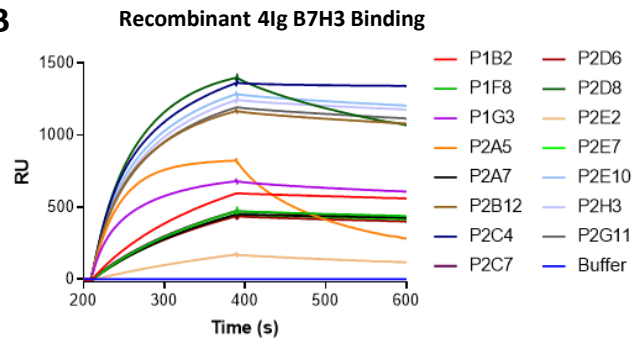


Supplementary figure 2

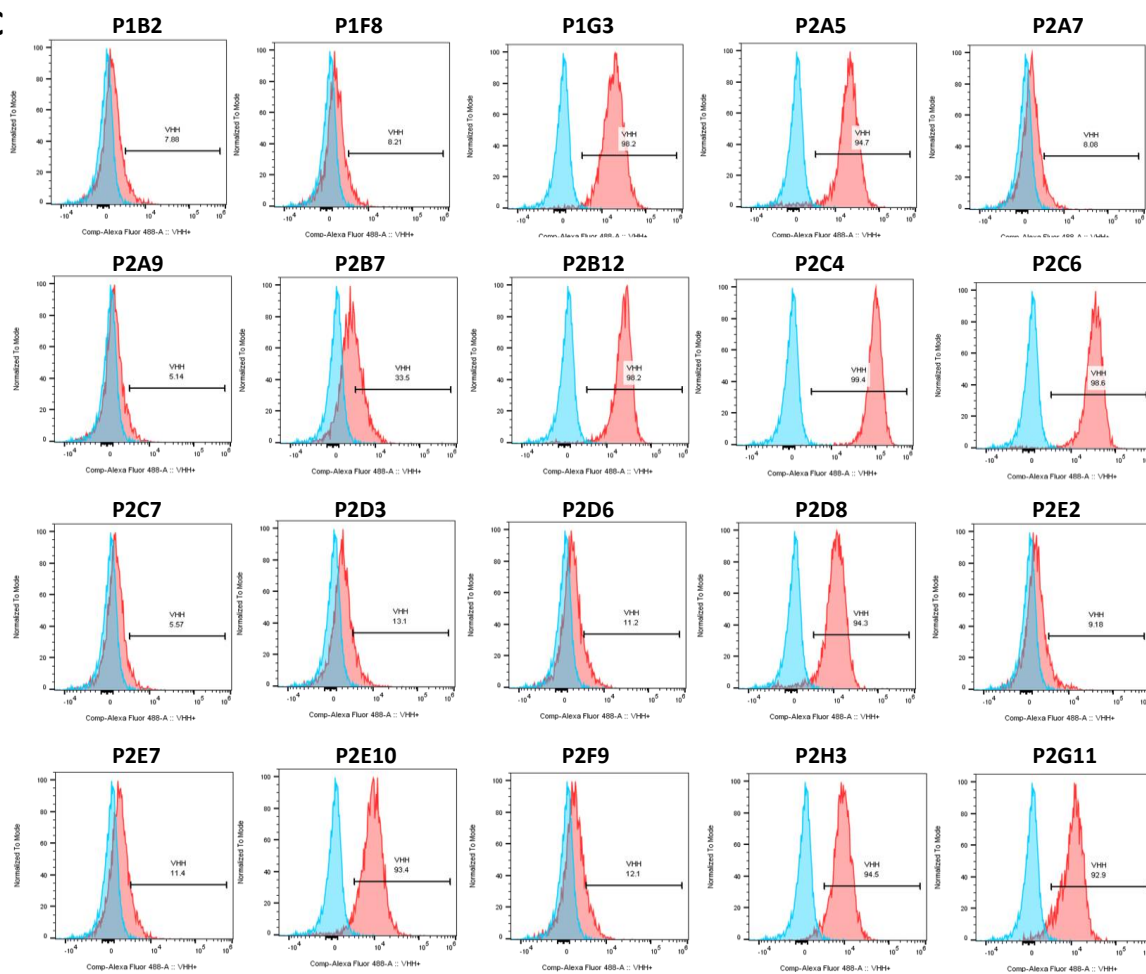
A



B



C



Supplementary figure 2. Identification and characterization of B7-H3-binding VHH from a phage displayed immunized llama library. **A**, B7-H3 binding screened by ELISA of eluted phages from round 2 (top) and round 3 (bottom) of biopanning with recombinant 4-Ig B7-H3. **B**, Surface plasmon resonance screening of B7-H3 binding to purified lead VHH candidates. **C**, Flow cytometry screening for binding of lead VHH candidates to B7-H3 expressing HepG2 cells. Histograms represent isotype stain in blue and VHH binding in red.