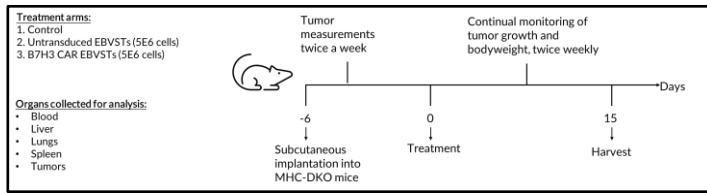
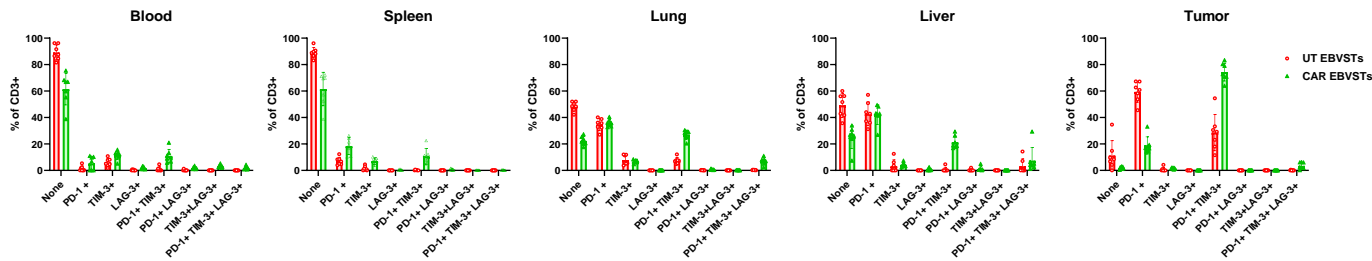


# Supplementary figure 4

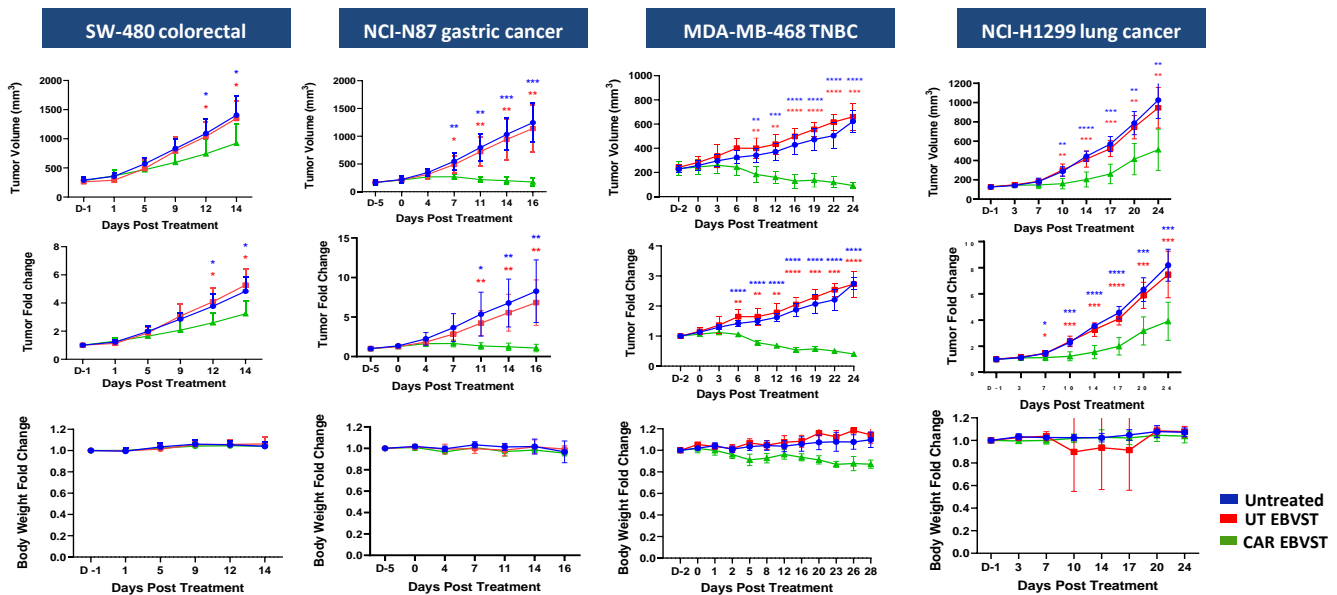
**A**



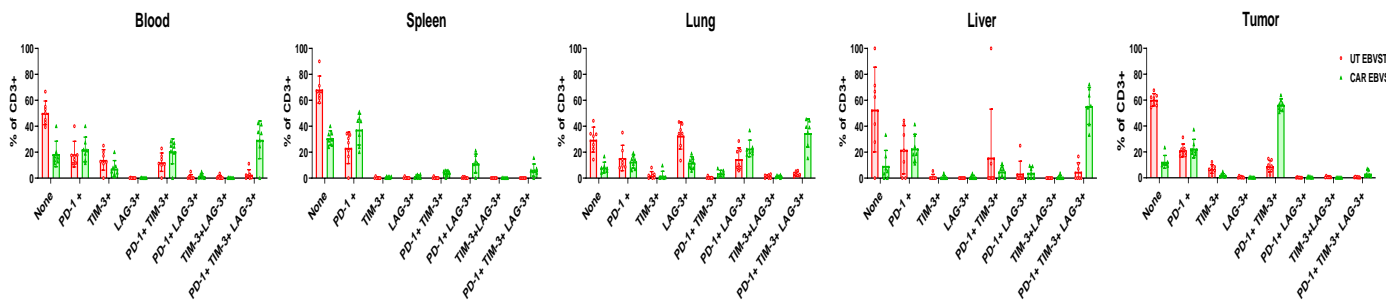
**B**



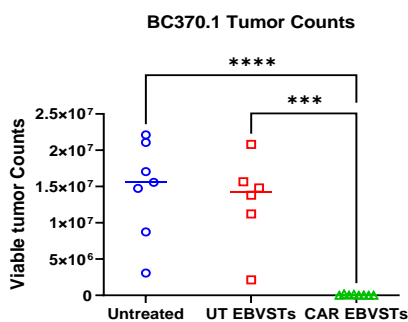
**C**



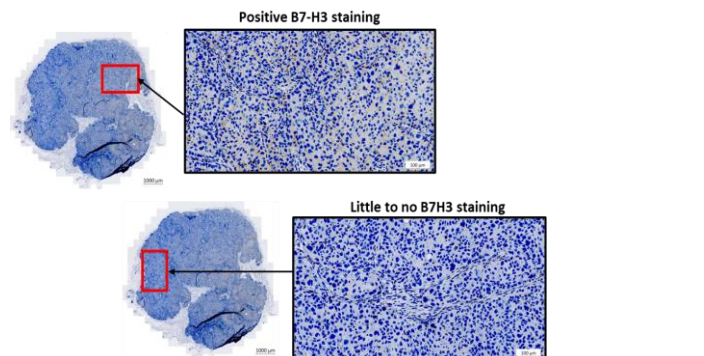
**D**



**E**

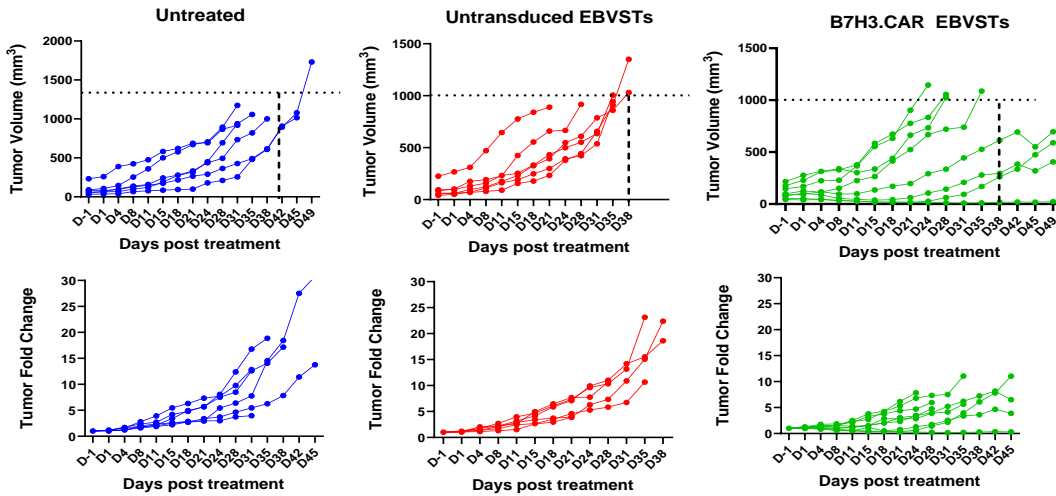


**F**

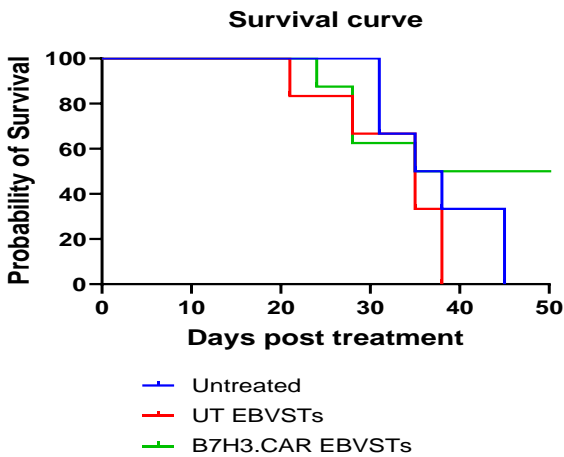


# Supplementary figure 4

G



H



**Supplementary figure 4.** *In vivo* activities of B7H3.CAR EBVSTs against B7-H3 positive solid tumors. **A**, Experiment set-up to evaluate *in vivo* efficacy of B7H3.CAR EBVSTs in cell line-derived solid tumor models. **B**, Percentages of human CD3<sup>+</sup> cells expressing the exhaustion markers in the blood, spleen, lungs, liver and tumor of mice in the HT-29 CRC model. **C**, Tumor volumes, fold change in tumor volumes, body weight measurements of untreated, UT and B7H3.CAR EBVST treatment groups in the SW-480, NCI-N87, MDA-MB-468 and NCI-H1299 cell-line derived solid tumor models. **D**, Percentages of human CD3<sup>+</sup> cells expressing the exhaustion markers in the blood, spleen, lungs, liver and tumor of mice in the NCI-N87 model. **E**, Endpoint viable tumor counts of BC370.1 breast cancer PDX model. Each point on the graph represents a mouse. **F**, IHC staining of B7-H3 on lung cancer PDX (left) with representative magnified images (right). Brown color represents positive B7-H3 staining. Blue color represents cell nucleus. **G**, Tumor volumes and fold change in tumor volume measurements of lung cancer PDX. **H**, Kaplan-Meier log-rank survival curve.

Data comprises of 6-8 (**B-E, G-H**) mice in each treatment arm. For **C**, groups were compared using 2-way ANOVA with Tukey's test for multiple comparisons test. Comparison and p-values between untreated versus untransduced T, untreated versus B7H3.CAR EBVSTs and untransduced T versus B7H3.CAR EBVSTs groups is represented in black, blue and red, respectively. For **E**, groups were compared using 1-way ANOVA with Tukey's test for multiple comparisons test \*: p<0.05; \*\*: p<0.01, \*\*\*: p<0.001, \*\*\*\*: p<0.0001. Error bars denote means  $\pm$  SD where applicable.