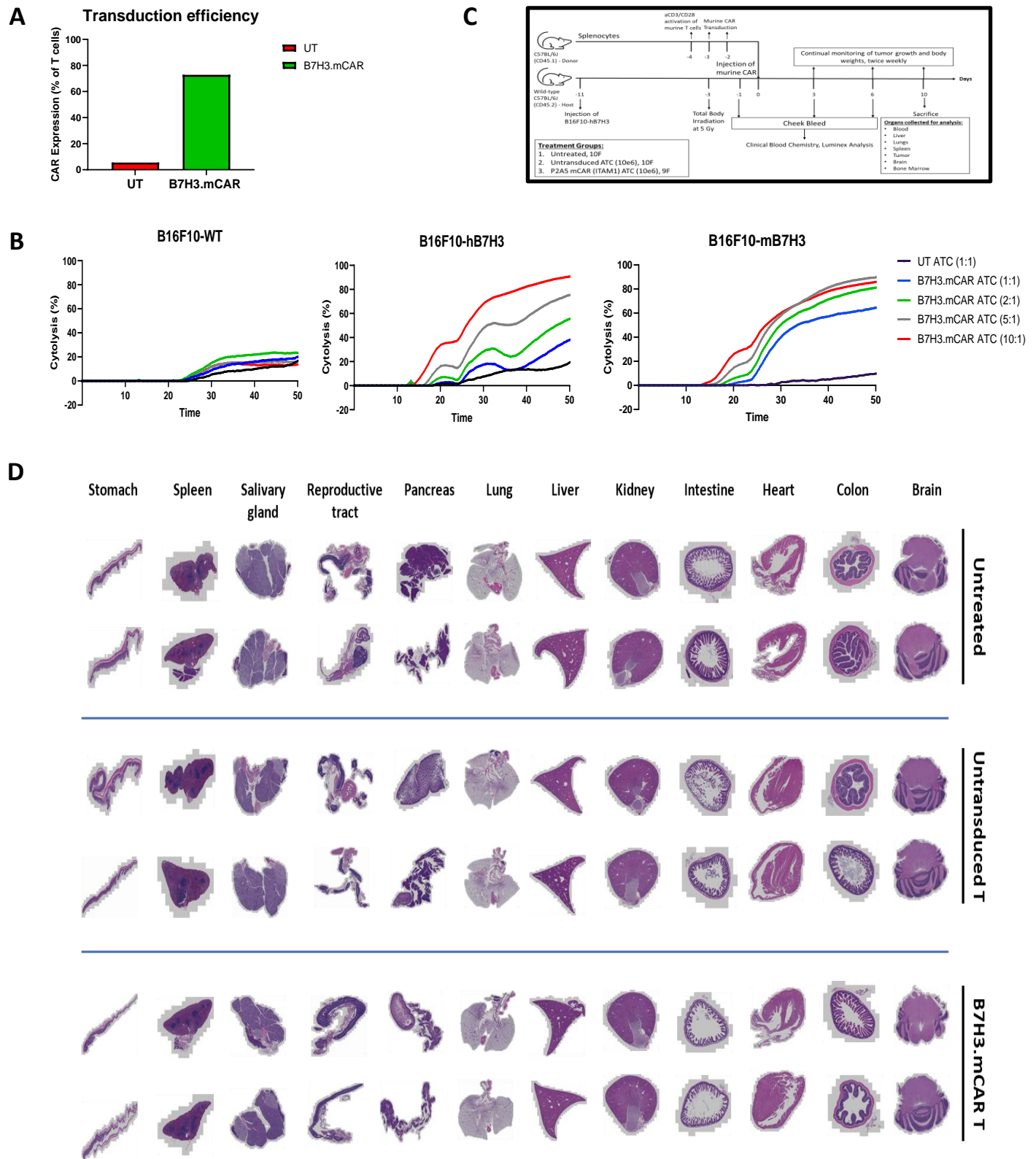


# Supplementary figure 5



**Supplementary figure 5.** Generation and in-vitro efficacy of B7H3.mCAR T cells. **A**, Murine CAR expression in B7H3.mCAR T cells. **B**, Cytotoxicity of B7H3.mCAR against B16F10-WT, B16F10 engineered to express human B7-H3 (B16F10-hB7H3) and mouse B7-H3 (B16F10-mB7H3). **C**, Experimental scheme describing syngeneic mouse model to evaluate on-tumor off-target toxicities associated with B7H3 murine CAR T cells. **D**, H and E images of organs from immunocompetent mice with syngeneic tumors that were untreated, treated with un-transduced or B7H3.mCAR T cell. Organs were harvested from 2 mice in each treatment group and sent for pathology evaluation.