

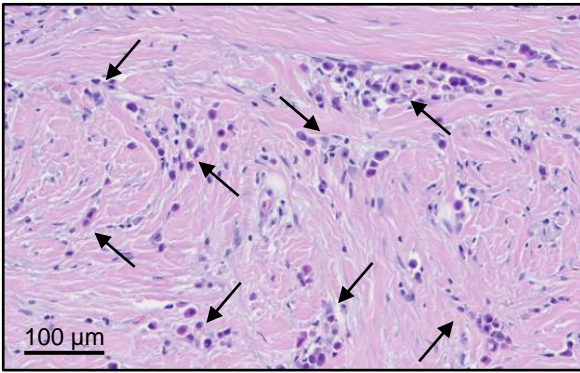
An optimised patient-derived explant platform for breast cancer reflects clinical responses to chemotherapy and antibody-directed therapy

Constantinos Demetriou¹, Naila Abid¹, Michael Butterworth¹, Larissa Lezina¹, Pavandeep Sandhu¹, Lynne Howells¹, Ian R Powley¹, James Howard Pringle¹, Zahirah Sidat², Omar Qassid^{1,3}, Dave Purnell³, Monika Kaushik⁴, Kaitlin Duckworth⁴, Helen Hartshorn⁴, Anne Thomas¹, Jacqui A Shaw¹, Marion MacFarlane^{5,6*}, Catrin Pritchard^{1*}, Gareth J Miles^{1*}

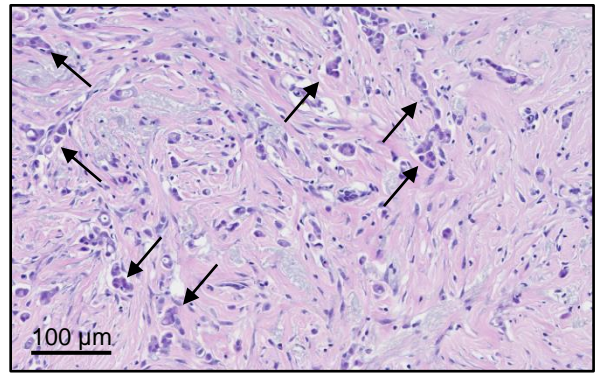
Additional File 5. Time course of BC-PDE culture

BC-PDEs were cultured for 20 hours (O/N) to recover from processing and then cultured for a further 24, 48 and 72 h. total culture times were 44, 68 and 92 h, respectively. T0 = 0 hr baseline control. Scale bars in H&E's represent 100 μ m and arrows show groups of invasive tumour cells.

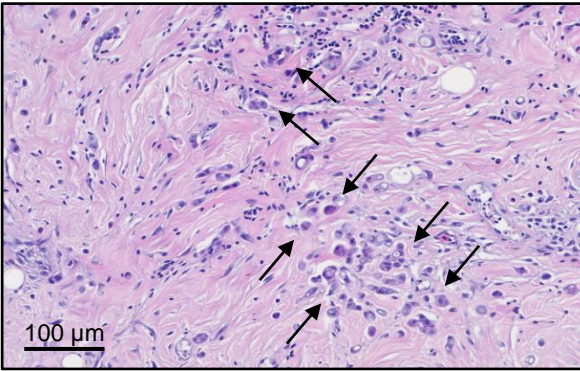
Additional File 5



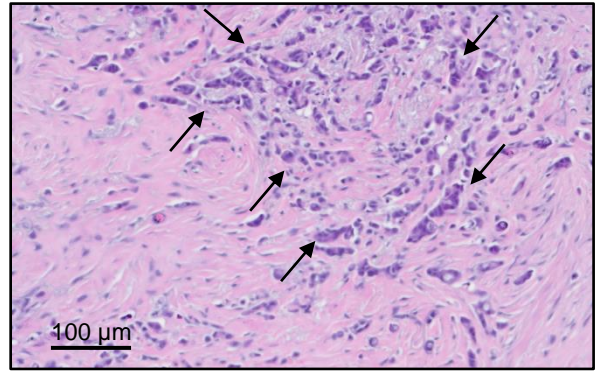
T0



20 h O/N + 24 h



20 h O/N + 48 h



20 h O/N + 72 h

