

Supplementary Material

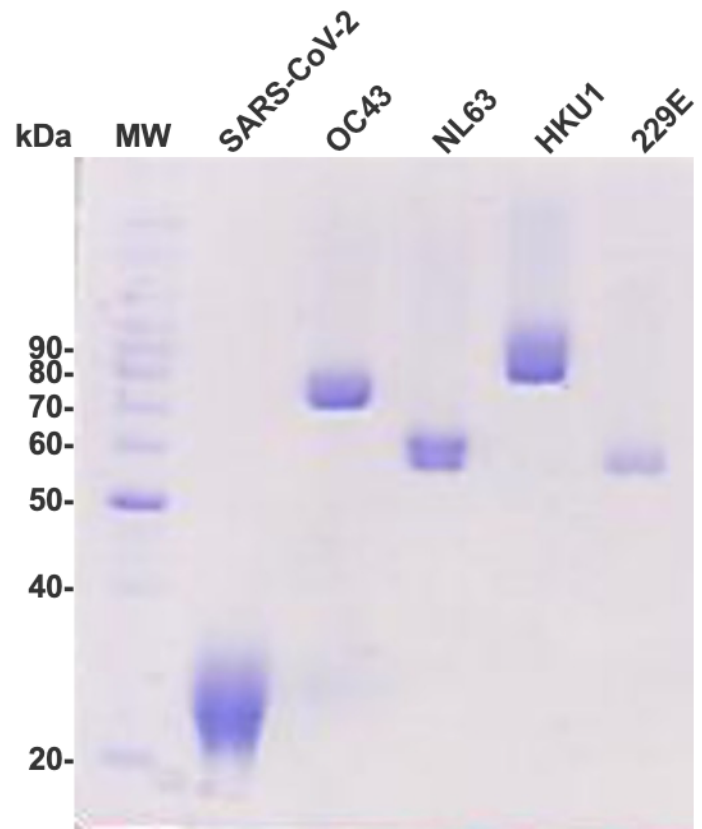
Supplementary Table 1. Cohort Data. Data from the cohort of real-time discordant couples used in the study: sample number, volunteer registration, gender (infected women: 35%; infected men: 65%), age (average age 46), PCR result (positive/ negative) and evolution of symptoms of COVID-19 (mild/moderate).

COHORT DATA								
PCR discordant couples	Sample Number	Volunteer Registration	Gender	Age	PCR Result	Symptoms	Serology	
							RBD	NP
1	1	C028680	M	77	Positive	Mild	Negative	Positive
	2	C028681	F	75	Negative	-		
2	3	C028688	F	46	Positive	Mild	Negative	Positive
	4	C028689	M	46	Negative	-		
3	5	C028690	M	37	Positive	Moderate	Positive	Positive
	6	C028691	F	35	Negative	-		
4	7	C028692	M	33	Positive	Moderate	Negative	Positive
	8	C028693	F	33	Negative	-		
5	9	C028696	F	37	Positive	Mild	Negative	Positive
	10	C028697	F	38	Negative	-		
6	11	C028708	M	41	Positive	Mild	Negative	Positive
	12	C028709	F	39	Negative	-		
7	13	C028720	M	65	Positive	Mild	Positive	Positive
	14	C028721	F	57	Negative	-		
8	15	C028724	M	38	Positive	Mild	Negative	Negative
	16	C028725	F	36	Negative	-		
9	17	C028730	M	44	Positive	Moderate	Positive	Positive
	18	C028731	F	42	Negative	-		
10	19	C028732	M	33	Positive	Mild	Positive	Positive
	20	C028733	F	35	Negative	-		
11	21	C028736	M	36	Positive	Mild	Positive	Positive
	22	C028737	F	35	Negative	-		
12	23	C028738	F	54	Positive	Mild	Positive	Positive
	24	C028739	M	54	Negative	-		
13	25	C028740	M	42	Positive	Mild	Positive	Positive

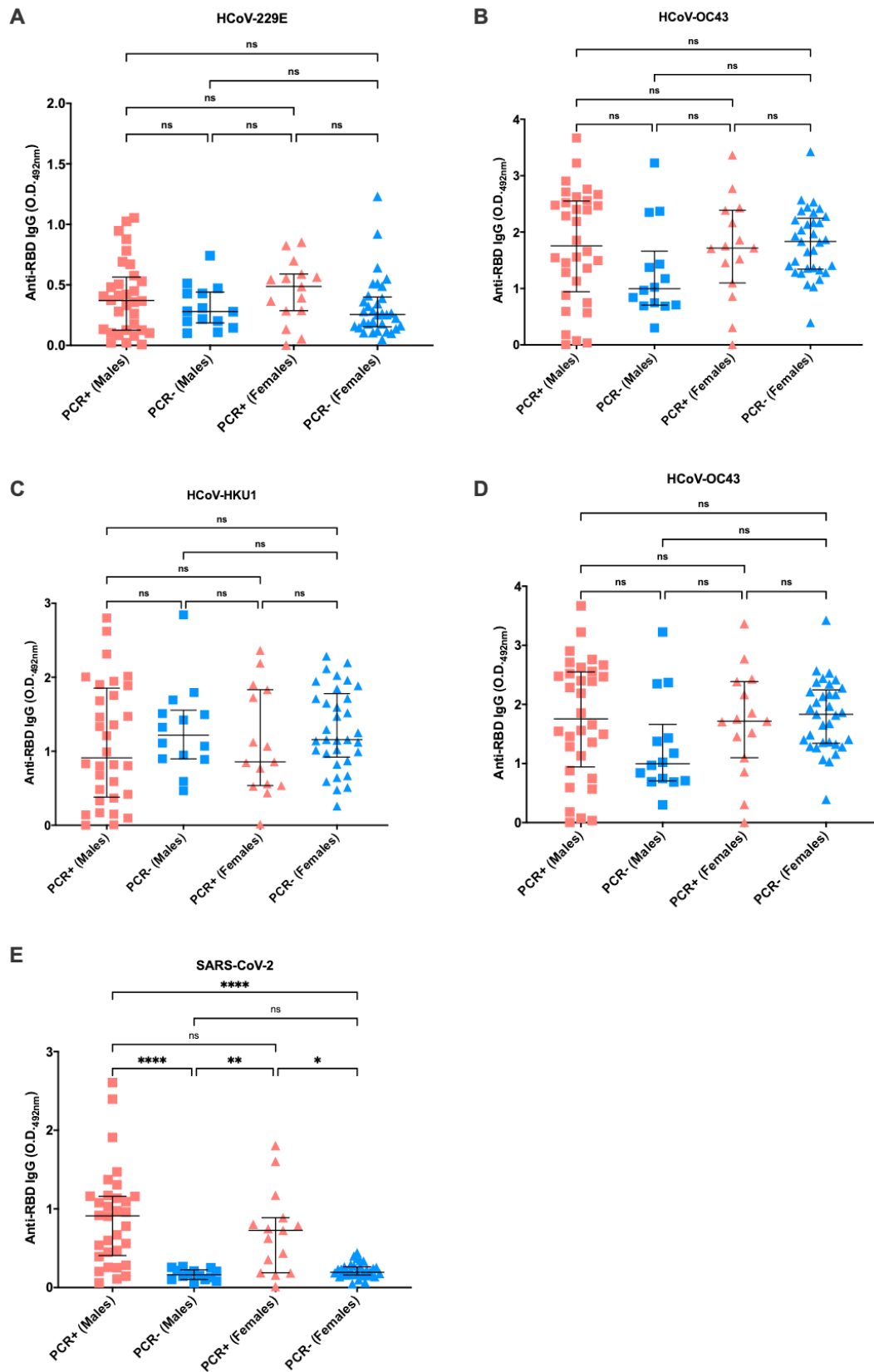
Supplementary Material

	26	C028741	F	48	Negative	-		
14	27	C028744	M	71	Positive	Mild	Positive	Positive
	28	C028745	F	68	Negative	-		
15	29	C028746	F	30	Positive	Mild	Positive	Positive
	30	C028747	F	29	Negative	-		
16	31	C028748	F	62	Positive	Moderate	Positive	Positive
	32	C028749	M	61	Negative	-		
17	33	C028750	M	52	Positive	Mild	Negative	Negative
	34	C028751	F	54	Negative	-		
18	35	C028752	M	56	Positive	Mild	Positive	Positive
	36	C028753	F	55	Negative	-		
19	37	C028757	M	54	Positive	Mild	Negative	Positive
	38	C028758	F	45	Negative	-		
20	39	C028764	M	70	Positive	Mild	Negative	Negative
	40	C028765	F	56	Negative	-		
21	41	C028766	F	34	Positive	Mild	Positive	Positive
	42	C028767	M	35	Negative	-		
22	43	C028776	M	64	Positive	Mild	Positive	Positive
	44	C028777	F	60	Negative	-		
23	45	C028778	M	37	Positive	Mild	Positive	Positive
	46	C028779	F	29	Negative	-		
24	47	C028780	M	49	Positive	Mild	Positive	Positive
	48	C028781	F	51	Negative	-		
25	49	C028782	M	56	Positive	Moderate	Positive	Positive
	50	C028783	F	55	Negative	-		
26	51	C028791	F	25	Positive	Mild	Positive	Positive
	52	C028792	M	24	Negative	-		
27	53	C028799	F	55	Positive	Moderate	Positive	Positive
	54	C028800	M	53	Negative	-		
28	55	C028806	M	43	Positive	Mild	Negative	Positive
	56	C028807	F	47	Negative	-		
29	57	C028812	F	36	Positive	Mild	Positive	Positive
	58	C028813	M	38	Negative	-		
30	59	C028814	F	33	Positive	Mild	Positive	Positive
	60	C028815	M	35	Negative	-		
31	61	C028825	M	64	Positive	Mild	Positive	Positive
	62	C028826	F	58	Negative	-		

32	63	C028827	F	26	Positive	Mild	Positive	Positive
	64	C028828	M	25	Negative	-		
33	65	C028838	M	49	Positive	Mild	Positive	Positive
	66	C028839	F	47	Negative	-		
34	67	C028840	M	82	Positive	Mild	Positive	Positive
	68	C028841	F	79	Negative	-		
35	69	C028848	M	33	Positive	Mild	Positive	Positive
	70	C028849	F	30	Negative	-		
36	71	C028852	M	58	Positive	Mild	Negative	Positive
	72	C028853	F	54	Negative	-		
37	73	C028856	M	46	Positive	Moderate	Positive	Positive
	74	C028857	F	40	Negative	-		
38	75	C028863	M	37	Positive	Mild	Negative	Positive
	76	C028864	M	29	Negative	-		
39	77	C028865	M	45	Positive	Mild	Positive	Positive
	78	C028866	F	45	Negative	-		
40	79	C028869	M	32	Positive	Mild	Negative	Negative
	80	C028870	F	31	Negative	-		
41	81	C028871	M	62	Positive	Mild	Positive	Positive
	82	C028872	F	53	Negative	-		
42	83	C028873	F	40	Positive	Mild	Negative	Negative
	84	C028874	M	50	Negative	-		
43	85	C028882	M	40	Positive	Mild	Positive	Positive
	86	C028883	F	42	Negative	-		
44	87	C028885	F	44	Positive	Mild	Negative	Negative
	88	C028886	M	46	Negative	-		
45	89	C028887	F	42	Positive	Mild	Positive	Negative
	90	C028888	M	28	Negative	-		
46	91	C028890	F	46	Positive	Mild	Negative	Negative
	92	C028891	M	47	Negative	-		
47	95	C028894	M	38	Positive	Mild	Negative	Negative
	96	C028895	F	33	Negative	-		



Supplementary Figure 1. RBDs from HCoV and SARS-CoV-2. RBDs were produced by transient transfection of Expi293 cells. Two μg of each protein were run on a polyacrylamide gel (SDS-PAGE 12%). Molecular weight in kDa is indicated on the left.



Supplementary Figure 2. Anti-RBD IgG serology profile of HCoV-229E, HCoV-OC43, HCoV-NL63 and HCoV HKU1 divided by gender. IgG response profile of PCR+ (males=32; females=15)

or PCR- (males=14; females= 33) for SARS-CoV-2 against RBD proteins derived from alphacoronaviruses HCoV-229E (A) and HCoV-NL63 (B), betacoronaviruses HCoV-OC43 (C) and HCoV-HKU1 (D), and SARS-CoV-2 (E). For this assay, the subjects' plasma was used at a concentration of 1:100, and the recombinant RBD in 2 $\mu\text{g/ml}$ (100 ng/well). The test was read in the wavelength of 492 nm and each graph shows the O.D. obtained for the PCR+ (red) or PCR- (blue) individuals for SARS-CoV-2. The horizontal black lines represent the medians \pm interquartile intervals. Kruskal-Wallis followed by the Dunn's test. ns= not significant.