

[&lt;&lt;]

Data File: E:\LTQ27\1228\LCQ18HPLC\H-5\1941077323-5.raw

Acquisition Date: 12/28/2023

Sample Name: TTTT/TT/iCUST227-NdT/T

Sample ID: F+T01

Position: 20

Inj Vol: 30

Instrument Method: C:\Xcalibur\methods\oligo\_htcs

Processing Method: C:\Xcalibur\methods\oligo\_htcs



## Target Mass Summary

| RT (min) | Target Mass (Da) | Observed Mass (Da) | Mass Error       | Intensity | % Abundance (in Spectrum) | % Purity (Estimate) | Identity    | Result Code |
|----------|------------------|--------------------|------------------|-----------|---------------------------|---------------------|-------------|-------------|
| 0.44     | 10058.9          | 10058.9            | 0.0 Da (0.000 %) | 2.17E+006 | 96.44                     | 96.44               | Target Mass |             |

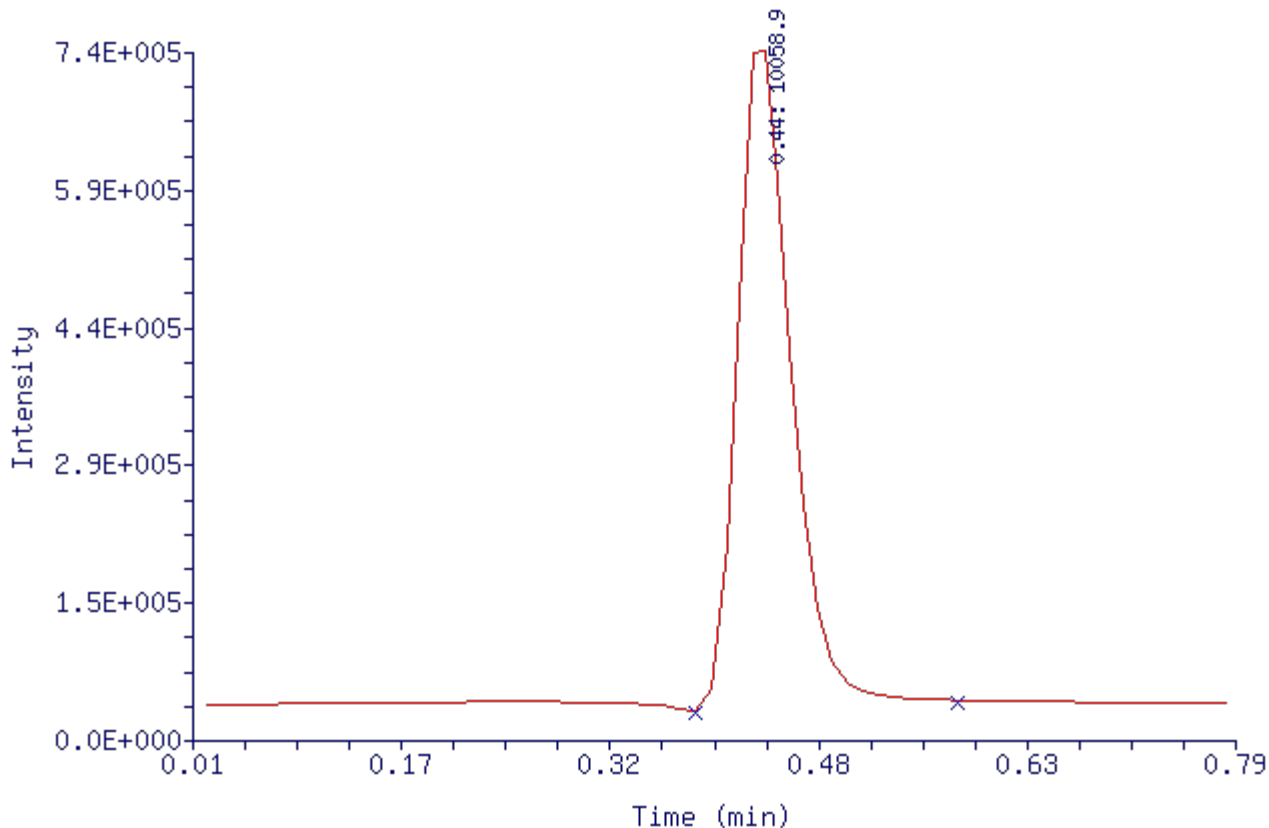
## Chromatogram Summary

| RT (min) | Base Peak Mass (Da) | Intensity | Spectral Quality | LC/MS Peak Area | LC/MS Area Percent |
|----------|---------------------|-----------|------------------|-----------------|--------------------|
| 0.44     | 10058.9             | 2.17E+006 | ok               | 1.98E+006       | 100.00             |

[&lt;&lt;] [Top]

LC/MS Chromatogram of F+T01:

TIC

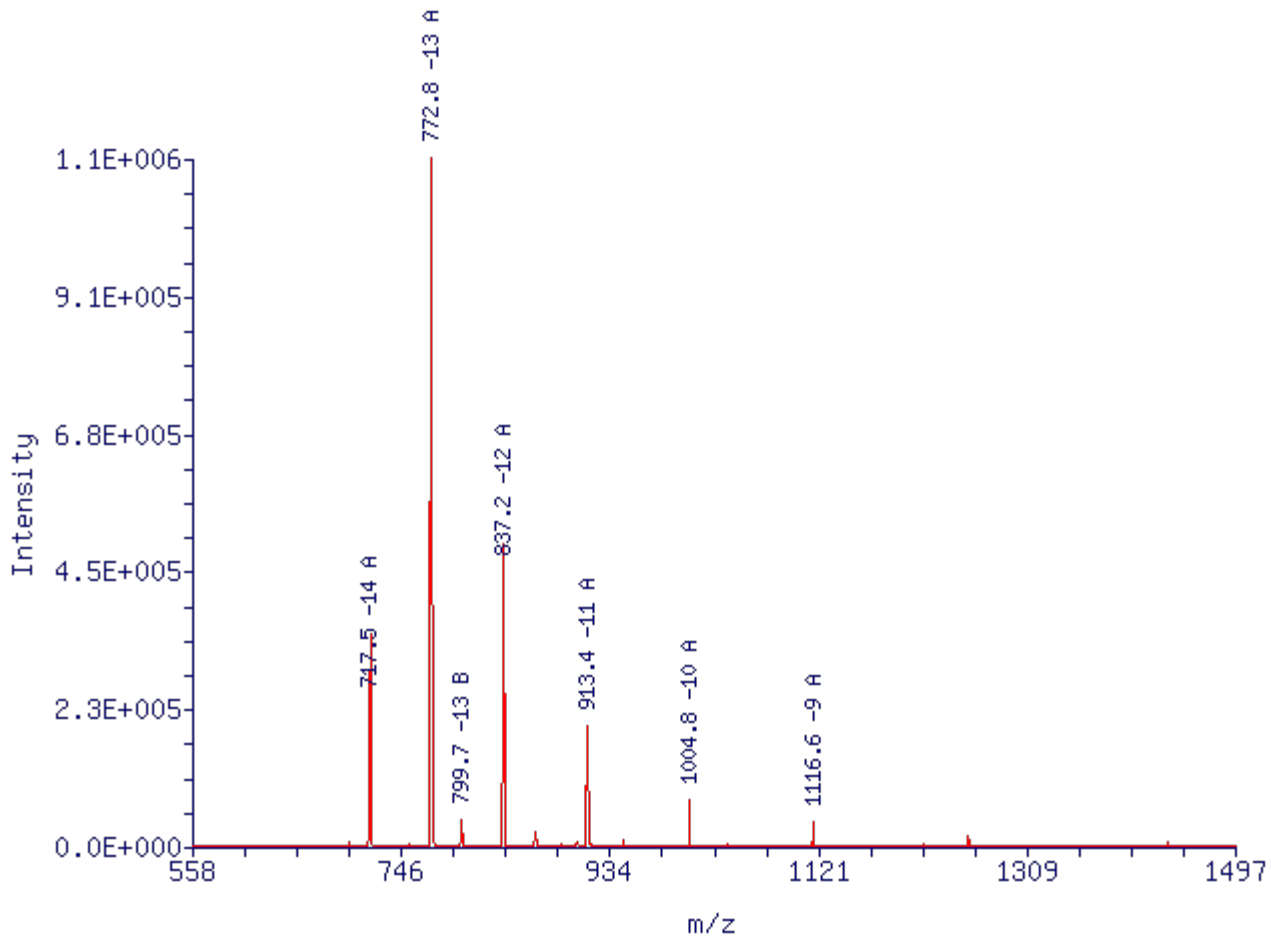


[\[<<\]](#) [\[Top\]](#) [\[Deconvolution\]](#) [\[Zoom Deconvolution\]](#) [\[Deconvolution Peak Report\]](#) [\[View Data\]](#) [\[Log File\]](#)

### ESI Mass Spectrum of F+T01, RT = 0.44 min:

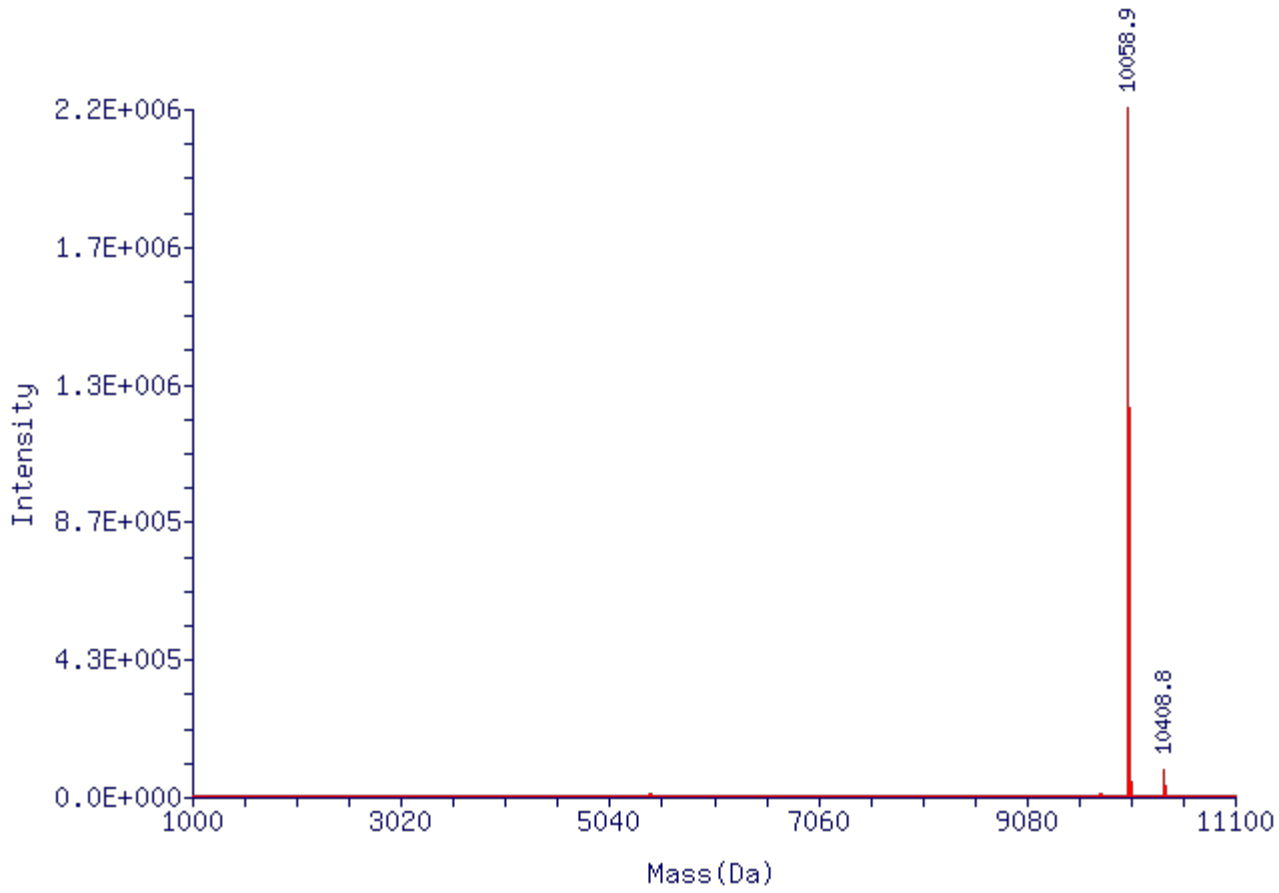
Scan Mode: - c ESI Full ms

Scans Averaged: 33-43 Minus: 9-30, 48-57



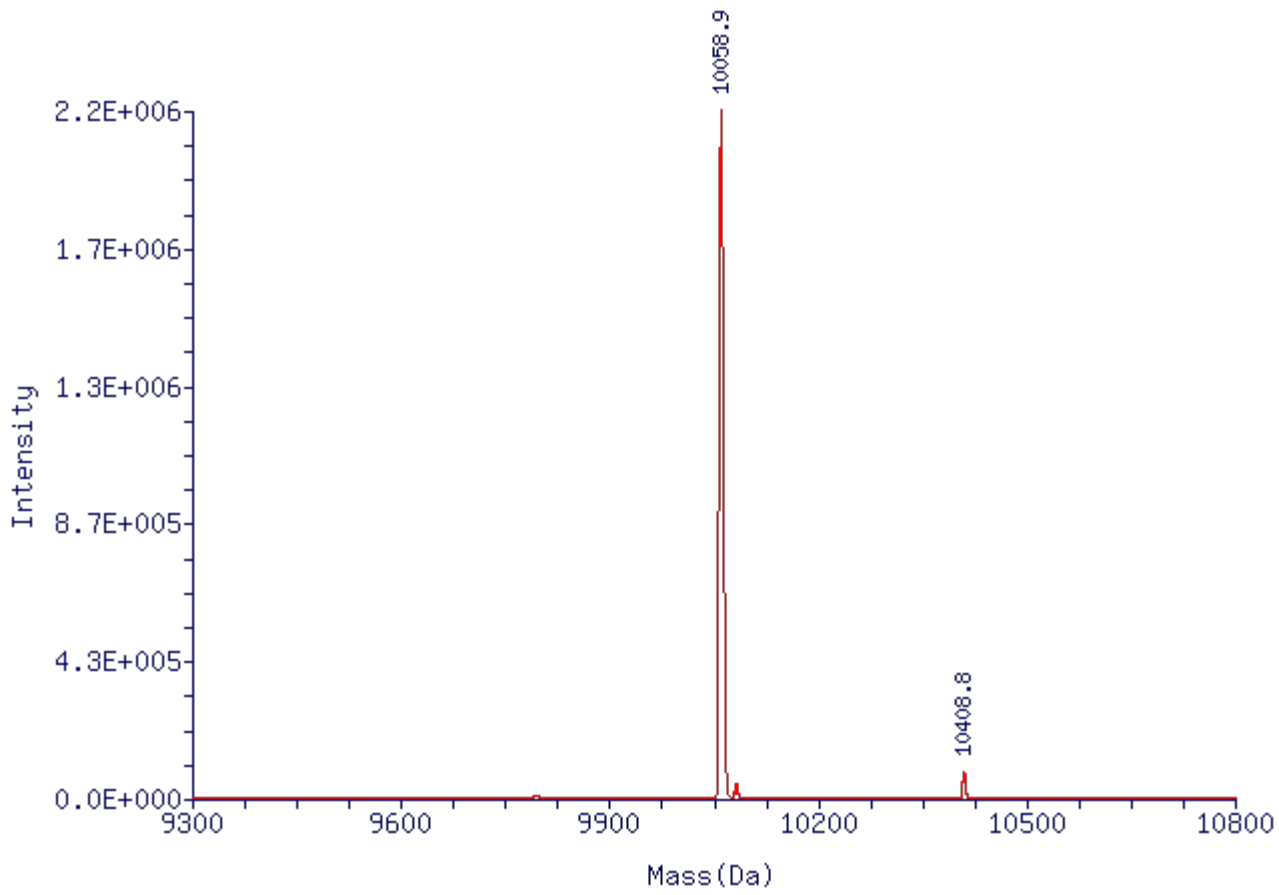
[\[<<\]](#) [\[Top\]](#) [\[ESI Mass Spectrum\]](#) [\[Zoom Deconvolution\]](#) [\[Deconvolution Peak Report\]](#) [\[View Data\]](#) [\[Log File\]](#)

### Deconvoluted Mass Spectrum of F+T01, RT = 0.44 min:



---

[\[<<\]](#) [\[Top\]](#) [\[ESI Mass Spectrum\]](#) [\[Deconvolution\]](#) [\[Deconvolution Peak Report\]](#) [\[View Data\]](#) [\[Log File\]](#)  
**Zoom Deconvoluted Mass Spectrum of F+T01, RT = 0.44 min:**



[<<] [Top]

| Result Code | Indication   |
|-------------|--|
| Green       | Target mass found in chromatogram as the most abundant component within 0.05% mass error tolerance   |
| Blue        | Target mass found as a major component or as a minor component with other target masses, but NOT as most abundant component in chromatogram  |
| Purple      | Target mass found in chromatogram with either or all of the following:<br>(a) other non-target components present in spectrum > 30% abundance<br>(b) low spectral quality (low intensity and/or score) |
| Orange      | Target mass found in chromatogram, but NOT as the most abundant in any of the chromatographic peaks  |
| Red         | Target mass NOT found in chromatogram within 0.05% mass error tolerance  |
| Cyan        | No target masses specified   |

ZNova 3.0.2 ©2001-2013 Novatia, LLC

[&lt;&lt;]

**Data File:** E:\LTQ7\1130\HPLC\H-7\1935465335-1.raw  
**Acquisition Date:** 11/30/2022  
**Sample Name:** TTTT/TT/iCUST195-NdT/T  
**Sample ID:** F+T01  
**Position:** 27  
**Inj Vol:** 30  
**Instrument Method:** C:\Xcalibur\methods\oligo\_htcs.meth  
**Processing Method:** C:\Xcalibur\methods\oligo\_htcs



## Target Mass Summary

| RT (min) | Target Mass (Da) | Observed Mass (Da) | Mass Error         | Intensity | % Abundance (in Spectrum) | % Purity (Estimate) | Identity    | Result Code |
|----------|------------------|--------------------|--------------------|-----------|---------------------------|---------------------|-------------|-------------|
| 0.39     | 10058.9          | 10056.4            | -2.5 Da (-0.025 %) | 9.79E+006 | 96.77                     | 96.77               | Target Mass |             |

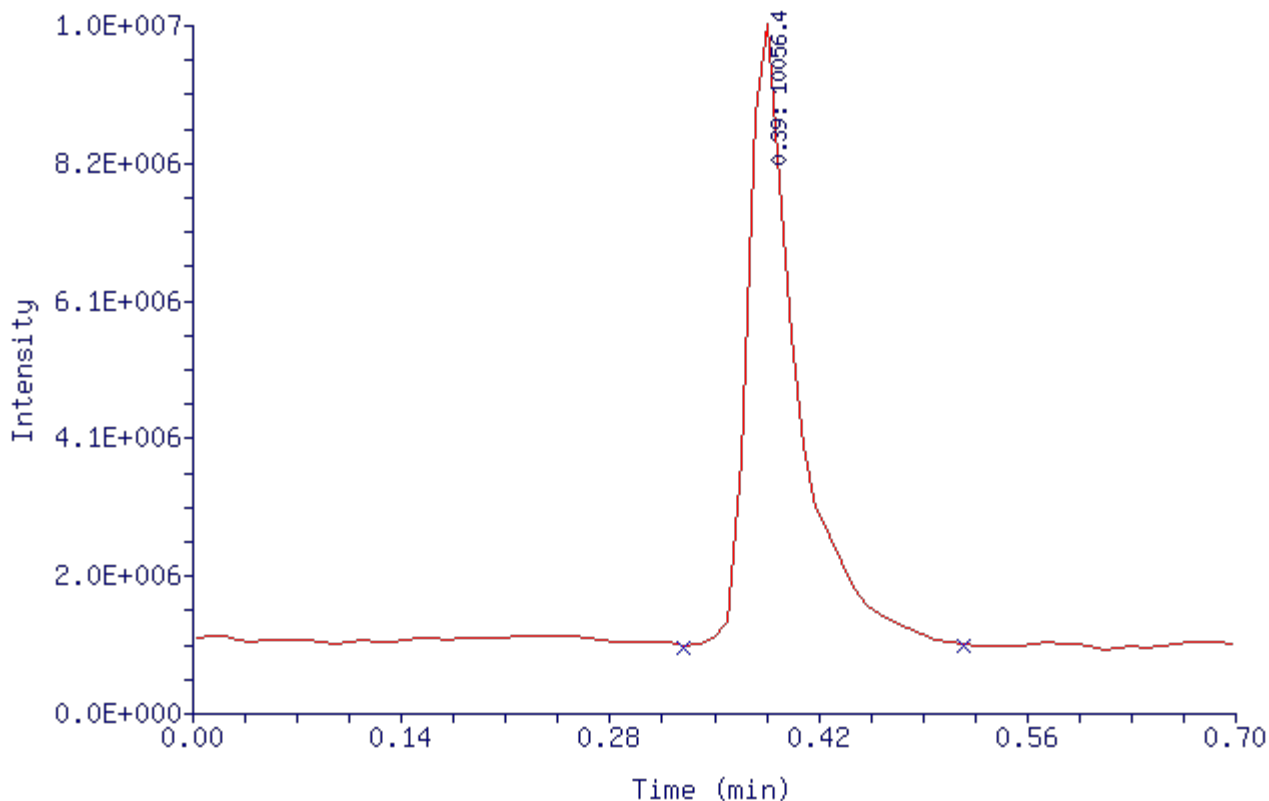
## Chromatogram Summary

| RT (min) | Base Peak Mass (Da) | Intensity | Spectral Quality | LC/MS Peak Area | LC/MS Area Percent |
|----------|---------------------|-----------|------------------|-----------------|--------------------|
| 0.39     | 10056.4             | 9.79E+006 | ok               | 2.16E+007       | 100.00             |

[&lt;&lt;] [Top]

LC/MS Chromatogram of F+T01:

TIC

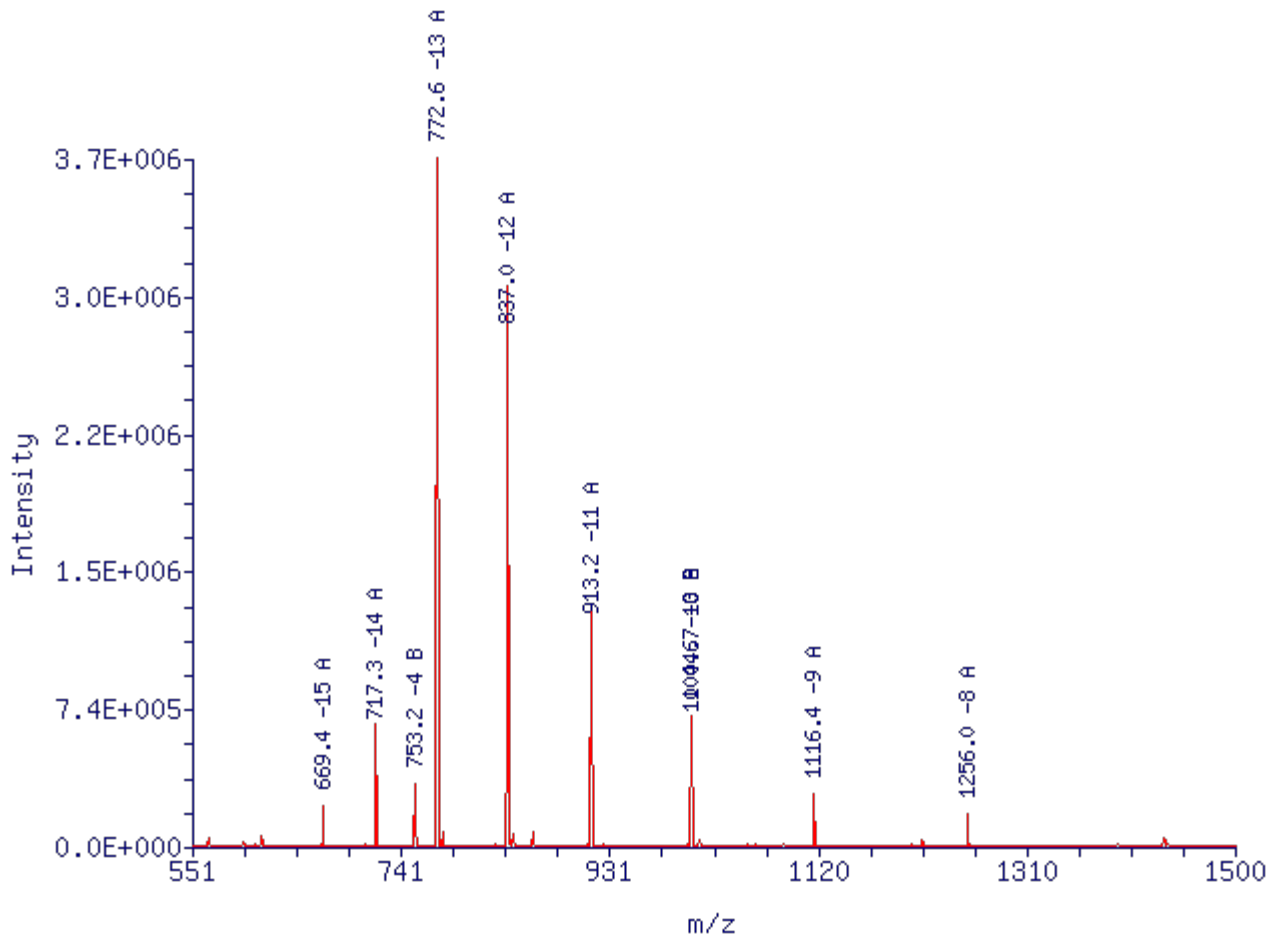


[\[<<\]](#) [\[Top\]](#) [\[Deconvolution\]](#) [\[Zoom Deconvolution\]](#) [\[Deconvolution Peak Report\]](#) [\[View Data\]](#) [\[Log File\]](#)

**ESI Mass Spectrum of F+T01, RT = 0.39 min:**

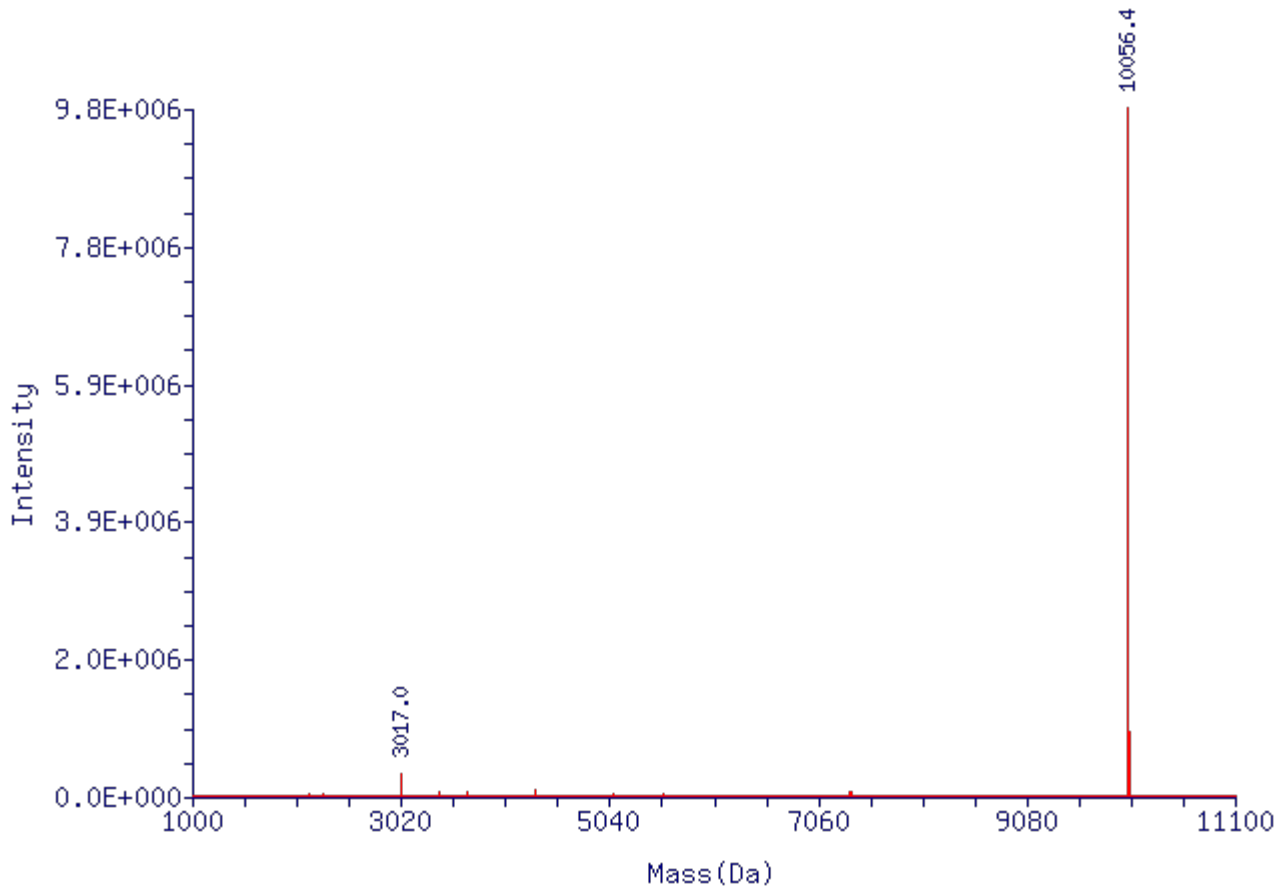
Scan Mode: - c ESI Full ms

Scans Averaged: 37-47 Minus: 27-50, 66



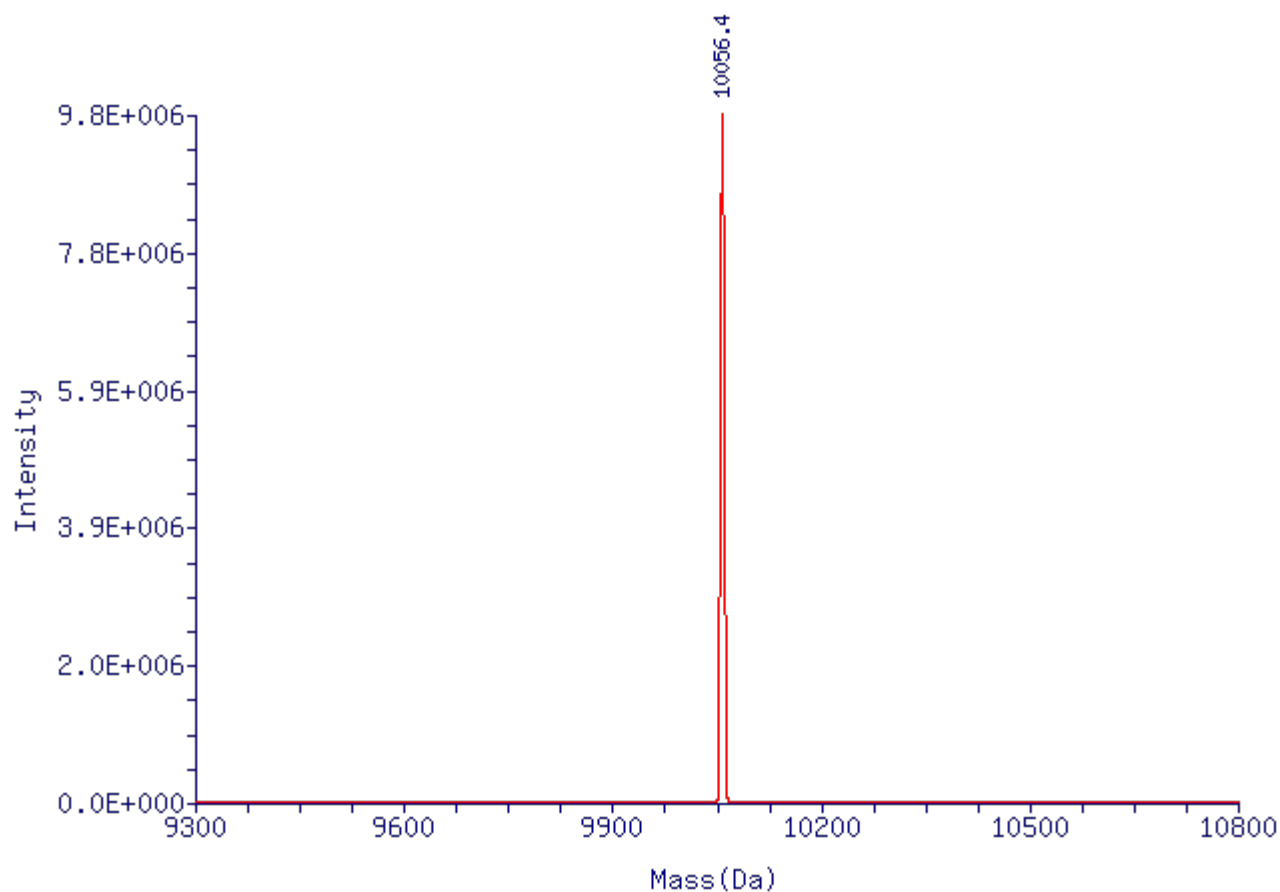
[\[<<\]](#) [\[Top\]](#) [\[ESI Mass Spectrum\]](#) [\[Zoom Deconvolution\]](#) [\[Deconvolution Peak Report\]](#) [\[View Data\]](#) [\[Log File\]](#)

**Deconvoluted Mass Spectrum of F+T01, RT = 0.39 min:**



---

[\[<<\]](#) [\[Top\]](#) [\[ESI Mass Spectrum\]](#) [\[Deconvolution\]](#) [\[Deconvolution Peak Report\]](#) [\[View Data\]](#) [\[Log File\]](#)  
**Zoom Deconvoluted Mass Spectrum of F+T01, RT = 0.39 min:**



[<<] [Top]

| Result Code | Indication   |
|-------------|--|
| Green       | Target mass found in chromatogram as the most abundant component within 0.048% mass error tolerance  |
| Blue        | Target mass found as a major component or as a minor component with other target masses, but NOT as most abundant component in chromatogram  |
| Purple      | Target mass found in chromatogram with either or all of the following:<br>(a) other non-target components present in spectrum > 30% abundance<br>(b) low spectral quality (low intensity and/or score) |
| Orange      | Target mass found in chromatogram, but NOT as the most abundant in any of the chromatographic peaks  |
| Red         | Target mass NOT found in chromatogram within 0.048% mass error tolerance   |
| Cyan        | No target masses specified   |

ZNova 3.0.2 ©2001-2013 Novatia, LLC



[&lt;&lt;]

Data File: E:\LTQ7\1130\HPLC\H-7\1935465334-1.raw

Acquisition Date: 11/30/2022

Sample Name: TTTT/TTTTTTTTTTTTTTTTTTTT/iCUST195-NdT/TTTTTT

Sample ID: F+T01

Position: 35

Inj Vol: 30

Instrument Method: C:\Xcalibur\methods\oligo\_htcs.meth

Processing Method: C:\Xcalibur\methods\oligo\_htcs



## Target Mass Summary

| RT (min) | Target Mass (Da) | Observed Mass (Da) | Mass Error         | Intensity | % Abundance (in Spectrum) | % Purity (Estimate) | Identity    | Result Code |
|----------|------------------|--------------------|--------------------|-----------|---------------------------|---------------------|-------------|-------------|
| 0.38     | 10058.9          | 10056.7            | -2.2 Da (-0.022 %) | 1.15E+007 | 100.00                    | 100.00              | Target Mass |             |

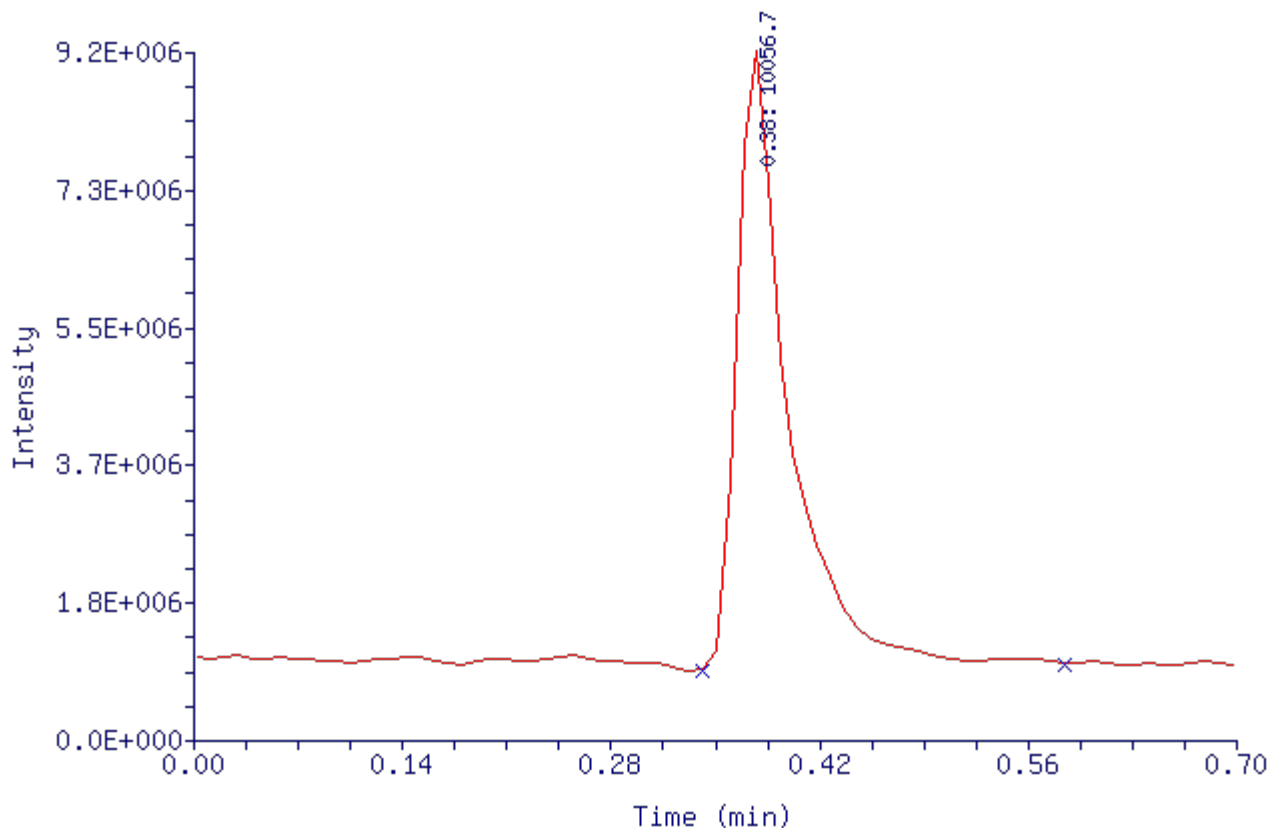
## Chromatogram Summary

| RT (min) | Base Peak Mass (Da) | Intensity | Spectral Quality | LC/MS Peak Area | LC/MS Area Percent |
|----------|---------------------|-----------|------------------|-----------------|--------------------|
| 0.38     | 10056.7             | 1.15E+007 | ok               | 2.01E+007       | 100.00             |

[&lt;&lt;] [Top]

LC/MS Chromatogram of F+T01:

TIC

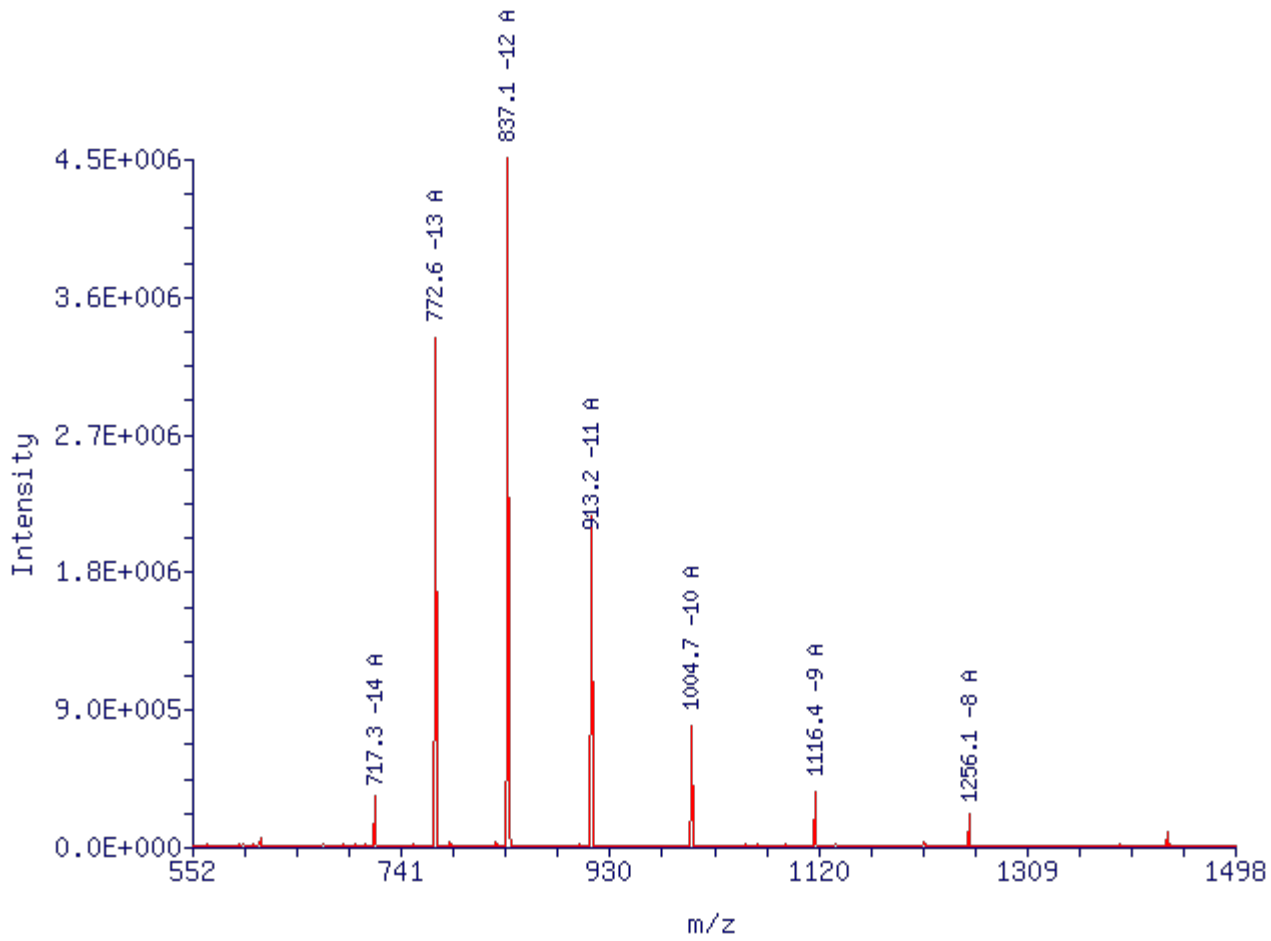


[<<] [Top] [Deconvolution] [Zoom Deconvolution] [Deconvolution Peak Report] [View Data] [Log File]

**ESI Mass Spectrum of F+T01, RT = 0.38 min:**

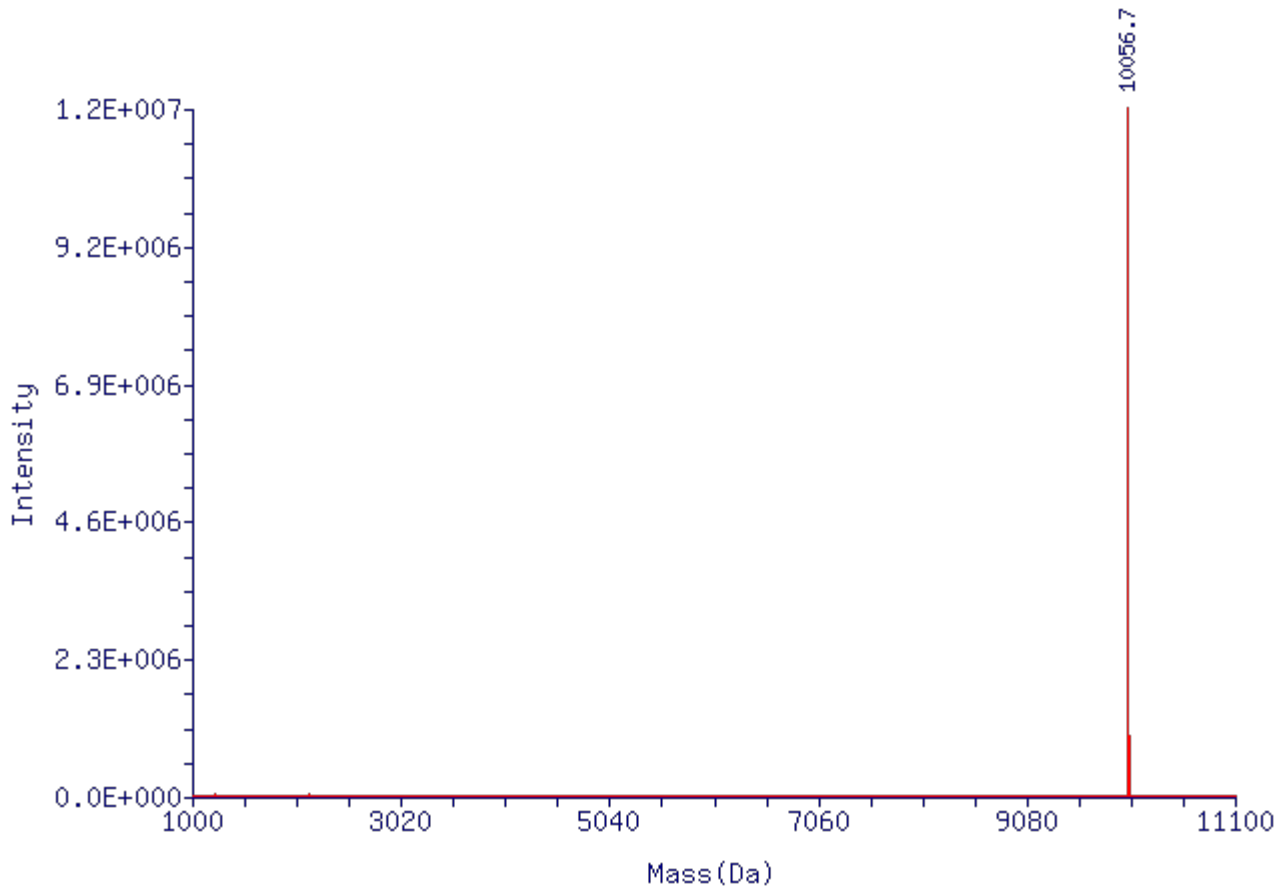
Scan Mode: - c ESI Full ms

Scans Averaged: 37-46 Minus: 27-50, 66



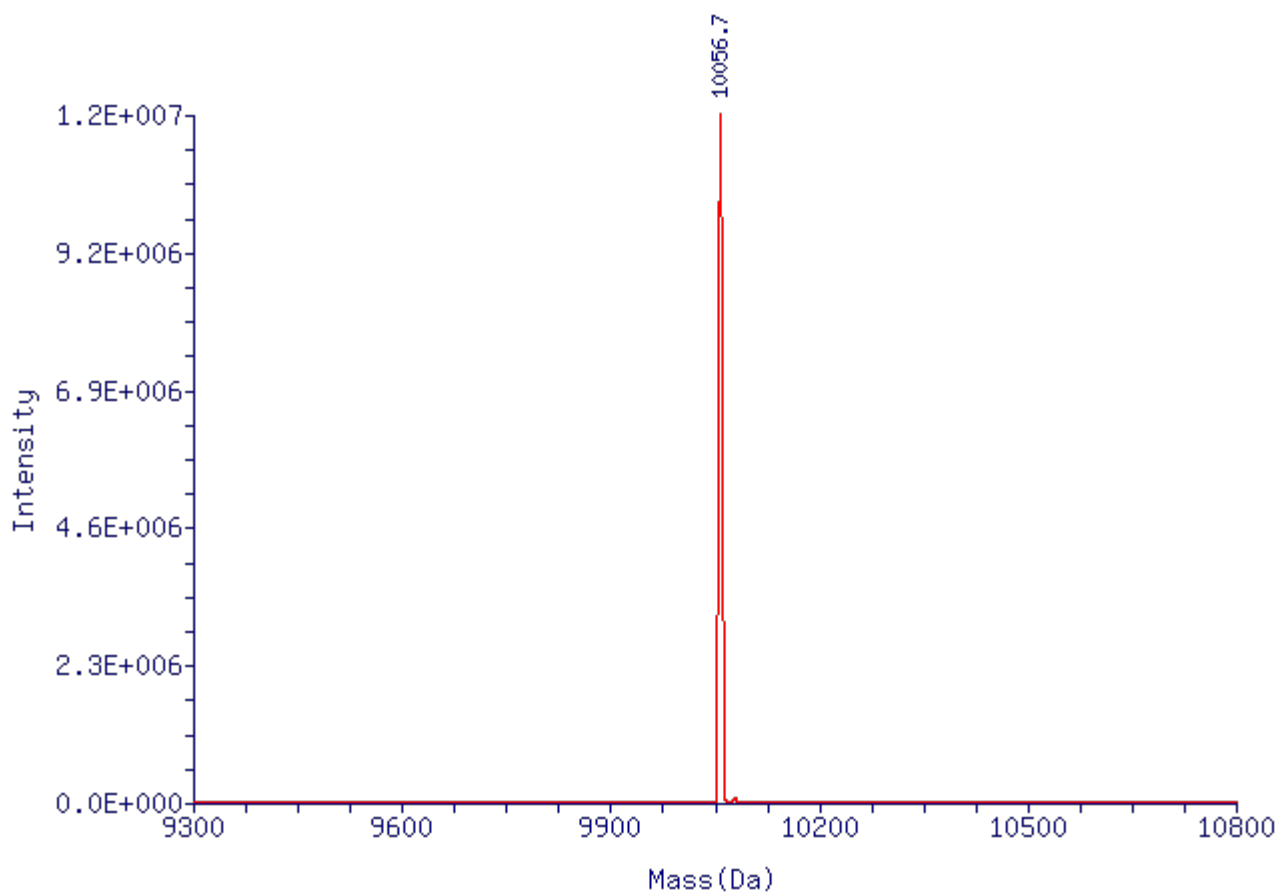
[<<] [Top] [ESI Mass Spectrum] [Zoom Deconvolution] [Deconvolution Peak Report] [View Data] [Log File]

**Deconvoluted Mass Spectrum of F+T01, RT = 0.38 min:**



---

[\[<<\]](#) [\[Top\]](#) [\[ESI Mass Spectrum\]](#) [\[Deconvolution\]](#) [\[Deconvolution Peak Report\]](#) [\[View Data\]](#) [\[Log File\]](#)  
**Zoom Deconvoluted Mass Spectrum of F+T01, RT = 0.38 min:**



[<<] [Top]

| Result Code | Indication   |
|-------------|--|
| Green       | Target mass found in chromatogram as the most abundant component within 0.048% mass error tolerance  |
| Blue        | Target mass found as a major component or as a minor component with other target masses, but NOT as most abundant component in chromatogram  |
| Purple      | Target mass found in chromatogram with either or all of the following:<br>(a) other non-target components present in spectrum > 30% abundance<br>(b) low spectral quality (low intensity and/or score) |
| Orange      | Target mass found in chromatogram, but NOT as the most abundant in any of the chromatographic peaks  |
| Red         | Target mass NOT found in chromatogram within 0.048% mass error tolerance   |
| Cyan        | No target masses specified   |

ZNova 3.0.2 ©2001-2013 Novatia, LLC

[&lt;&lt;]

**Data File:** E:\LTQ6\1201\HPLC\H-7\1935465333-1.raw  
**Acquisition Date:** 12/1/2022  
**Sample Name:** TTTTTTTTTTTTTTTT/iCUST195-NdT/TTTTTTTTTTTTTT  
**Position:** 49  
**Inj Vol:** 30  
**Instrument Method:** C:\Xcalibur\methods\oligo\_htcs  
**Processing Method:** C:\Xcalibur\methods\oligo\_htcs



### Target Mass Summary

| RT (min) | Target Mass (Da) | Observed Mass (Da) | Mass Error       | Intensity | % Abundance (in Spectrum) | % Purity (Estimate) | Identity    | Result Code |
|----------|------------------|--------------------|------------------|-----------|---------------------------|---------------------|-------------|-------------|
| 0.41     | 10058.9          | 10060.0            | 1.1 Da (0.011 %) | 1.65E+007 | 91.21                     | 95.00               | Target Mass |             |

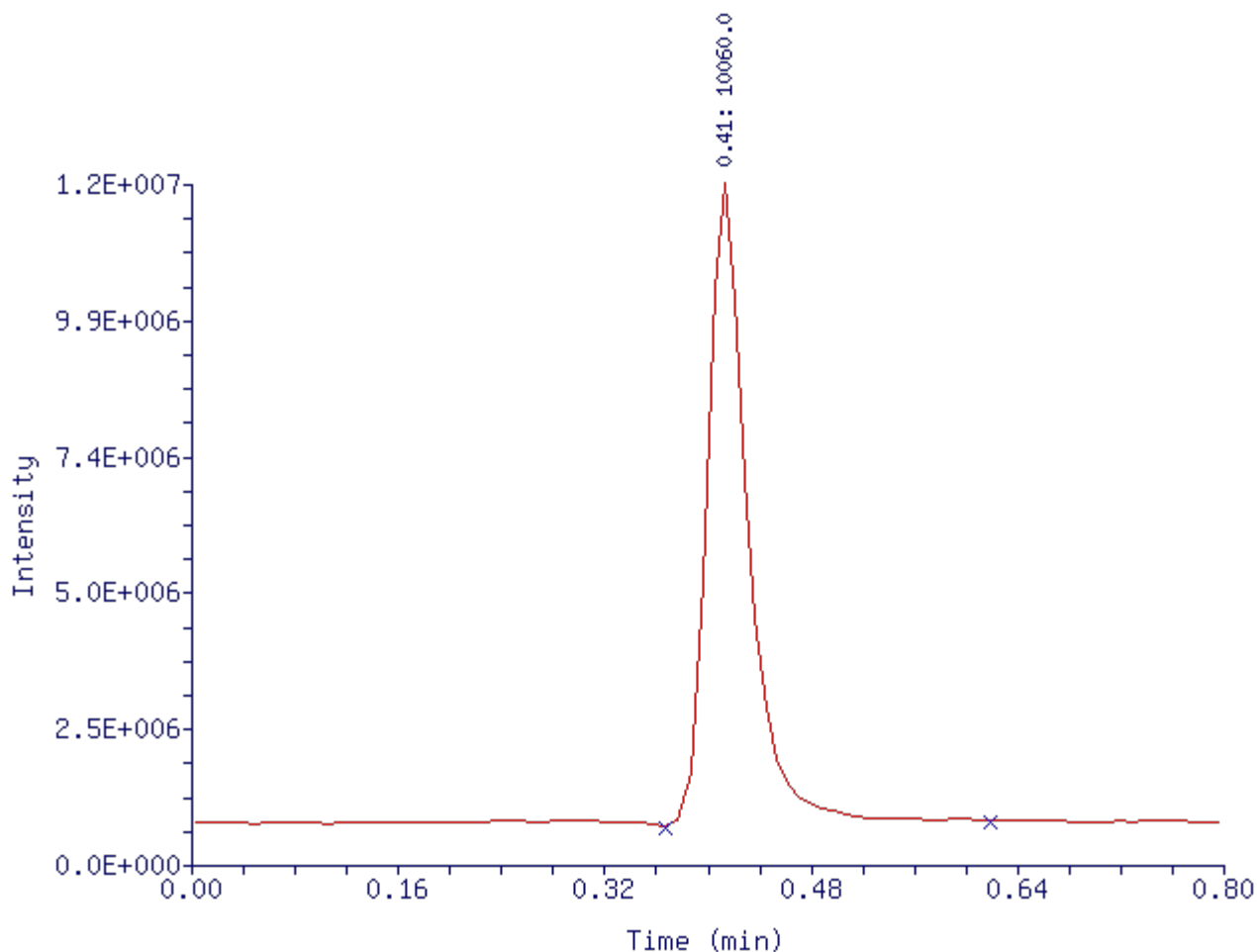
### Chromatogram Summary

| RT (min) | Base Peak Mass (Da) | Intensity | Spectral Quality | LC/MS Peak Area | LC/MS Area Percent |
|----------|---------------------|-----------|------------------|-----------------|--------------------|
| 0.41     | 10060.0             | 1.65E+007 | ok               | 2.64E+007       | 100.00             |

[&lt;&lt;] [Top]

LC/MS Chromatogram:

TIC

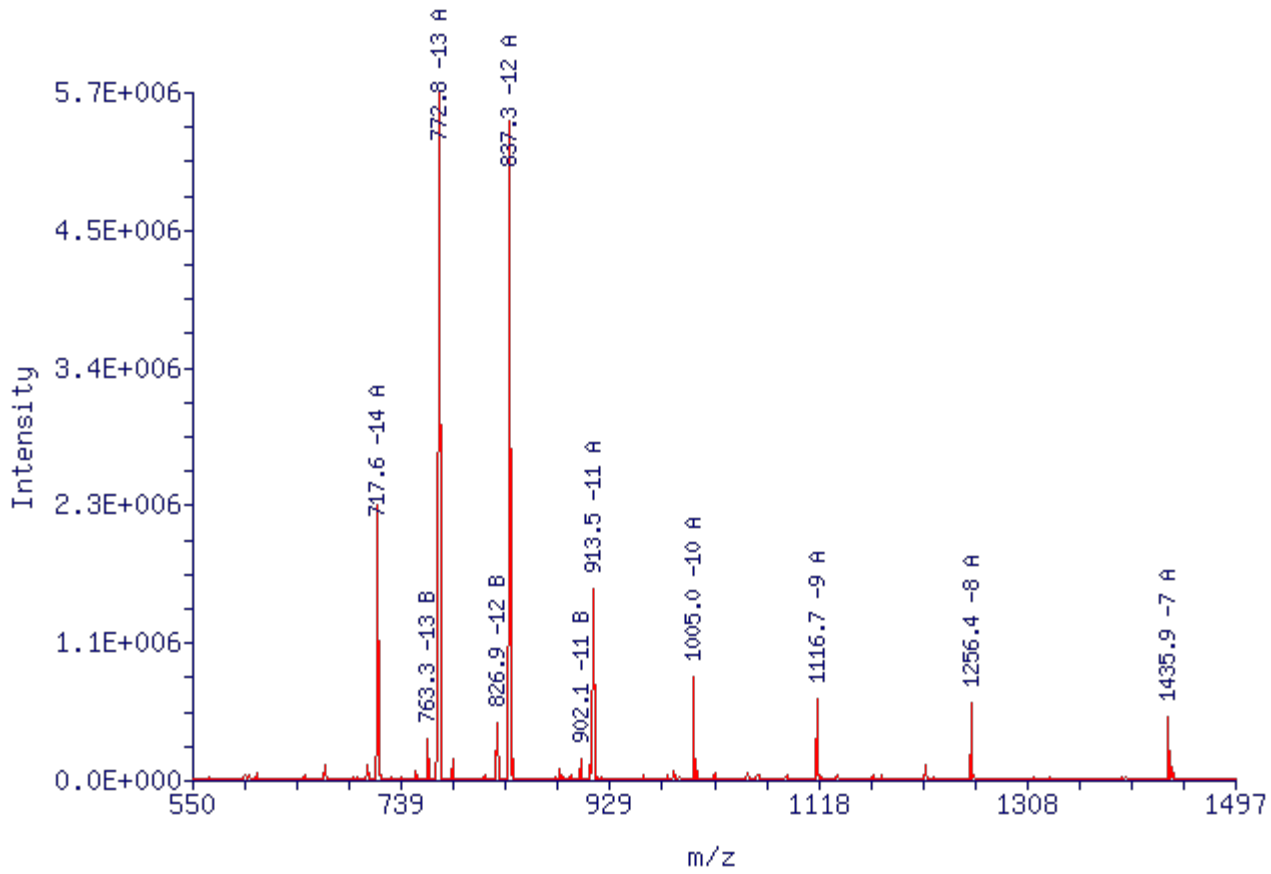


[<<] [Top] [Deconvolution] [Zoom Deconvolution] [Deconvolution Peak Report] [View Data] [Log File]

**ESI Mass Spectrum , RT = 0.41 min:**

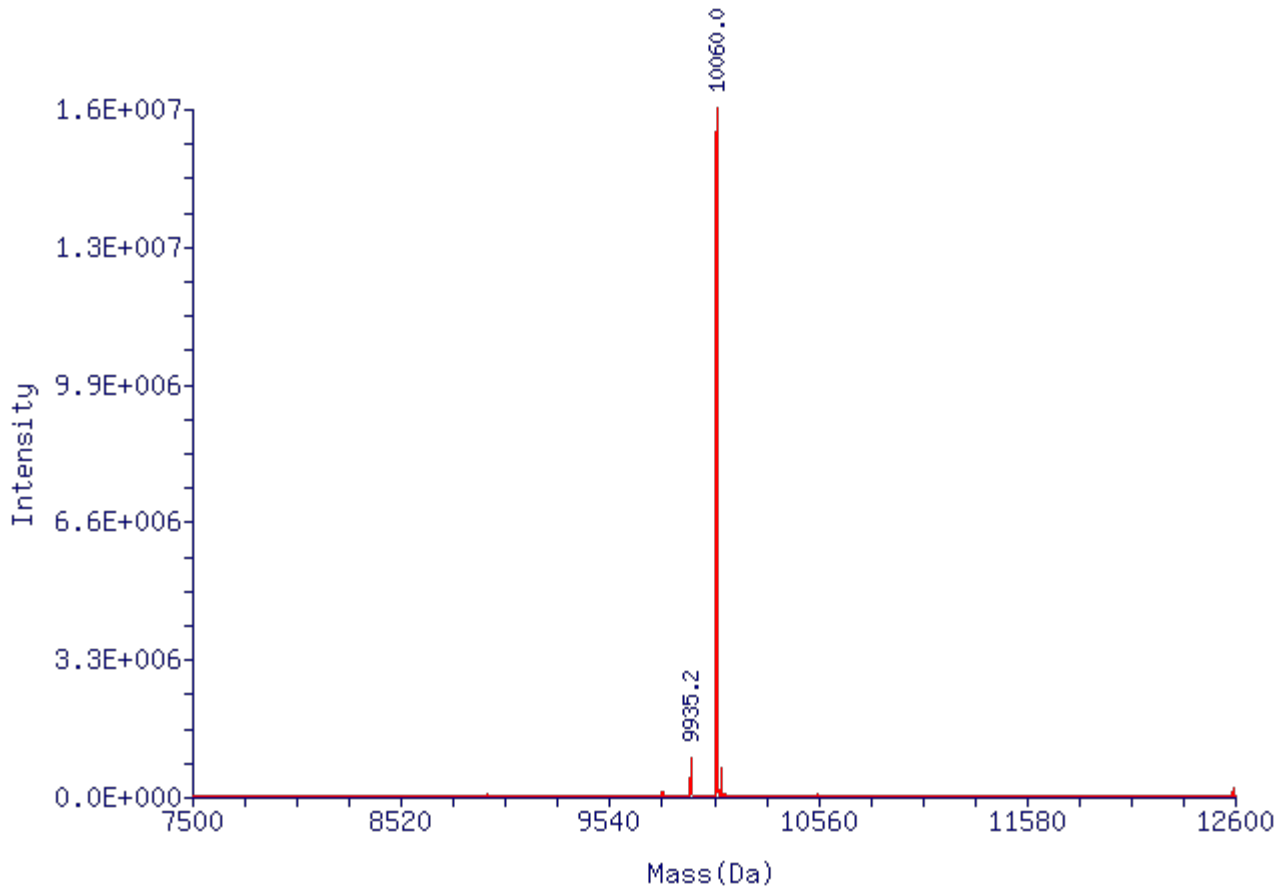
Scan Mode: - c ESI Full ms

Scans Averaged: 40-50 Minus: 17-38, 66



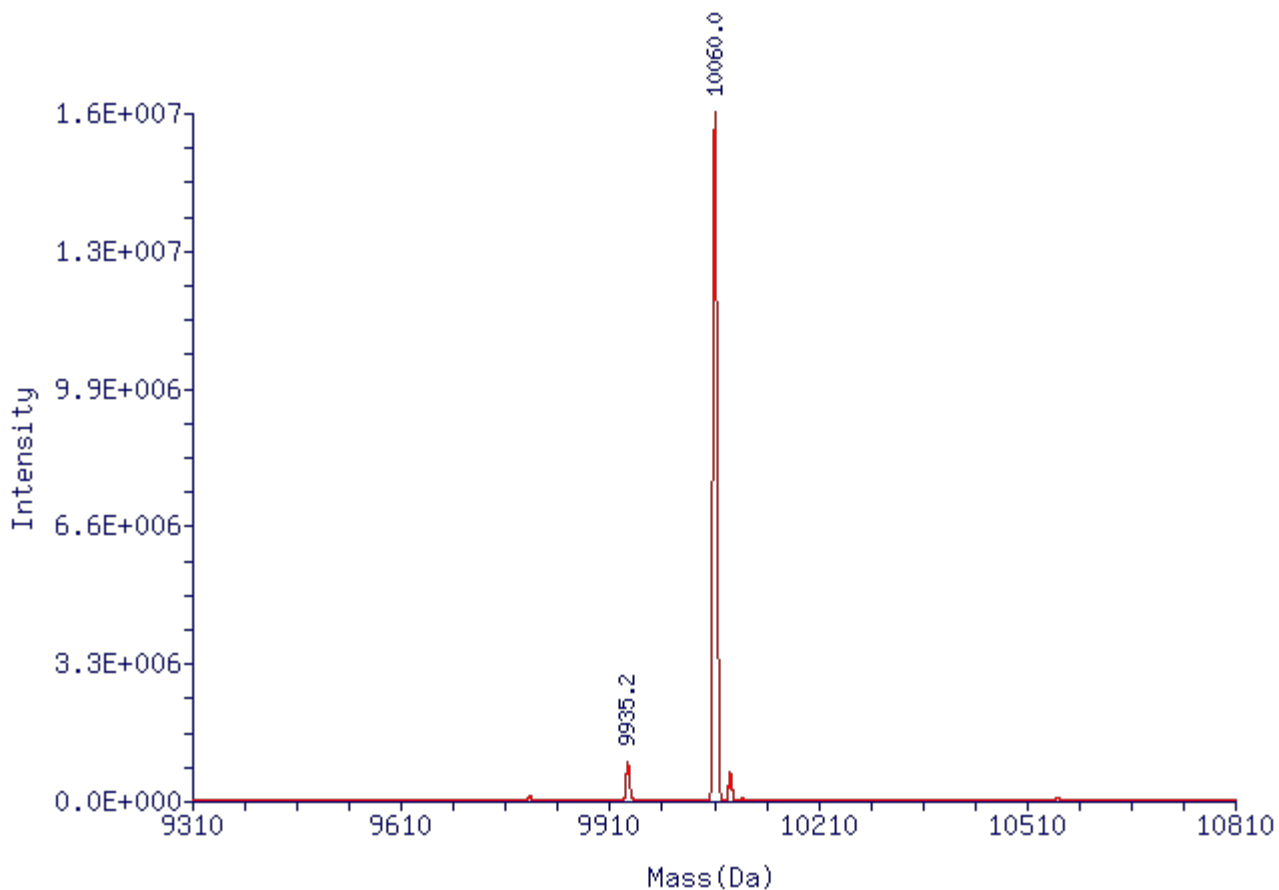
[<<] [Top] [ESI Mass Spectrum] [Zoom Deconvolution] [Deconvolution Peak Report] [View Data] [Log File]

**Deconvoluted Mass Spectrum , RT = 0.41 min:**



---

[\[<<\]](#) [\[Top\]](#) [\[ESI Mass Spectrum\]](#) [\[Deconvolution\]](#) [\[Deconvolution Peak Report\]](#) [\[View Data\]](#) [\[Log File\]](#)  
**Zoom Deconvoluted Mass Spectrum , RT = 0.41 min:**



[<<] [Top]

| Result Code | Indication   |
|-------------|--|
| Green       | Target mass found in chromatogram as the most abundant component within 0.048% mass error tolerance  |
| Blue        | Target mass found as a major component or as a minor component with other target masses, but NOT as most abundant component in chromatogram  |
| Purple      | Target mass found in chromatogram with either or all of the following:<br>(a) other non-target components present in spectrum > 30% abundance<br>(b) low spectral quality (low intensity and/or score) |
| Orange      | Target mass found in chromatogram, but NOT as the most abundant in any of the chromatographic peaks  |
| Red         | Target mass NOT found in chromatogram within 0.048% mass error tolerance   |
| Cyan        | No target masses specified   |

ZNova 3.0.2 ©2001-2013 Novatia, LLC



[&lt;&lt;]

Data File: E:\LTQ6\2023\0409\HPLC\H-20\1937422808-1.raw

Acquisition Date: 4/9/2023

Sample Name: TAAAAAAAAAAAAAAAAAAAAAAAAAAAAA

Sample ID: F+T01

Position: 15

Inj Vol: 30

Instrument Method: C:\Xcalibur\methods\oligo\_htcs

Processing Method: C:\Xcalibur\methods\oligo\_htcs



## Target Mass Summary

| RT (min) | Target Mass (Da) | Observed Mass (Da) | Mass Error       | Intensity | % Abundance (in Spectrum) | %Purity (Estimate) | Identity    | Result Code |
|----------|------------------|--------------------|------------------|-----------|---------------------------|--------------------|-------------|-------------|
| 0.43     | 10101.0          | 10101.6            | 0.6 Da (0.006 %) | 2.33E+007 | 91.73                     | 91.73              | Target Mass |             |

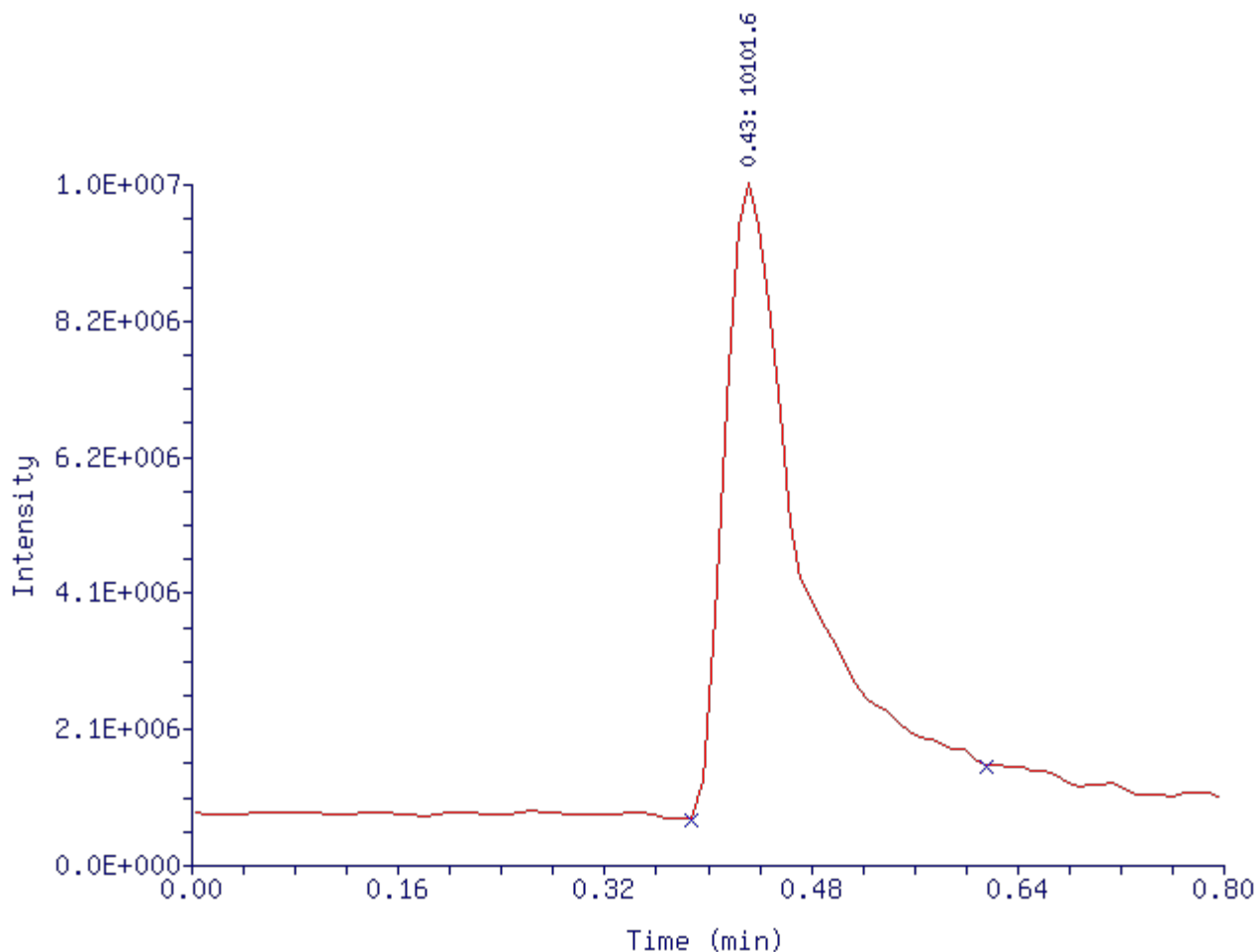
## Chromatogram Summary

| RT (min) | Base Peak Mass (Da) | Intensity | Spectral Quality | LC/MS Peak Area | LC/MS Area Percent |
|----------|---------------------|-----------|------------------|-----------------|--------------------|
| 0.43     | 10101.6             | 2.33E+007 | ok               | 3.81E+007       | 100.00             |

[&lt;&lt;] [Top]

LC/MS Chromatogram of F+T01:

TIC

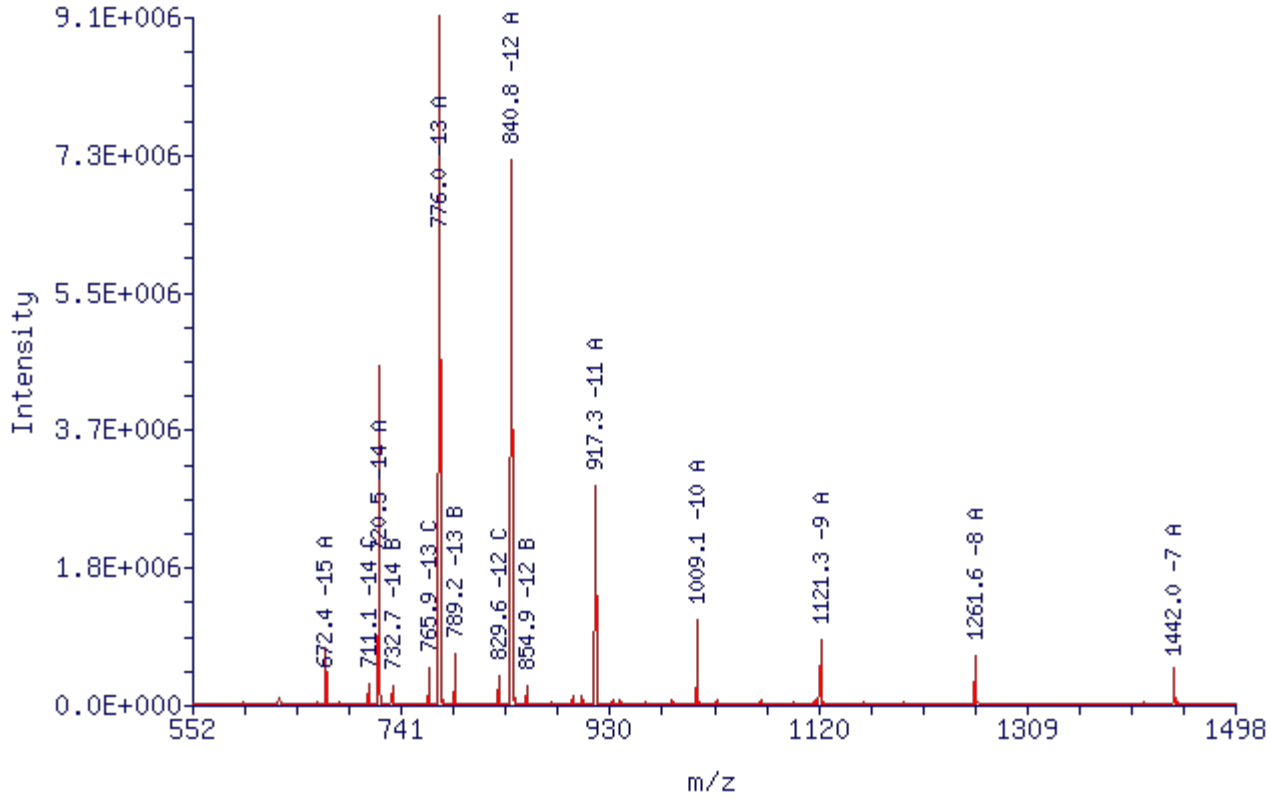


[\[<<\]](#) [\[Top\]](#) [\[Deconvolution\]](#) [\[Zoom Deconvolution\]](#) [\[Deconvolution Peak Report\]](#) [\[View Data\]](#) [\[Log File\]](#)

**ESI Mass Spectrum of F+T01, RT = 0.43 min:**

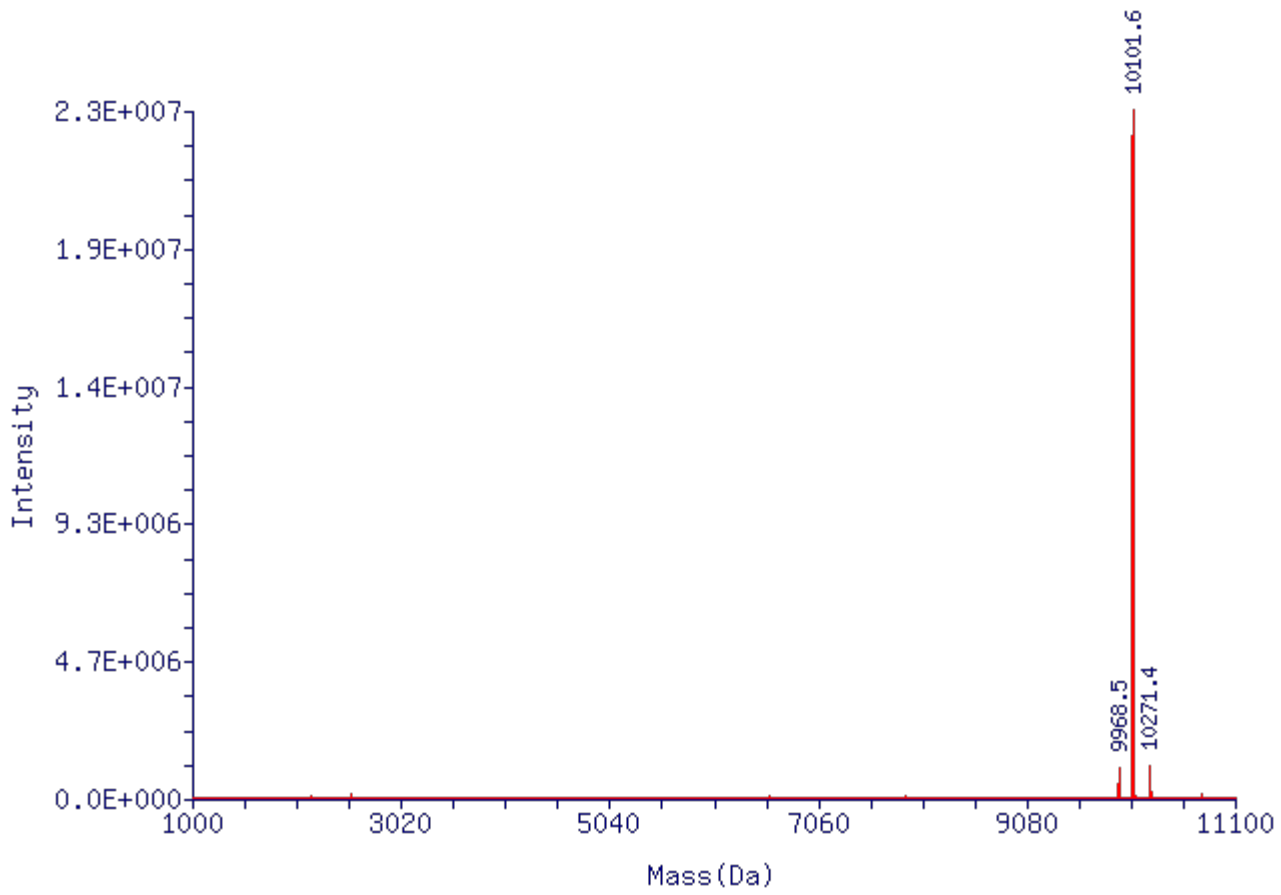
Scan Mode: - c ESI Full ms

Scans Averaged: 42-52 Minus: 17-38, 67



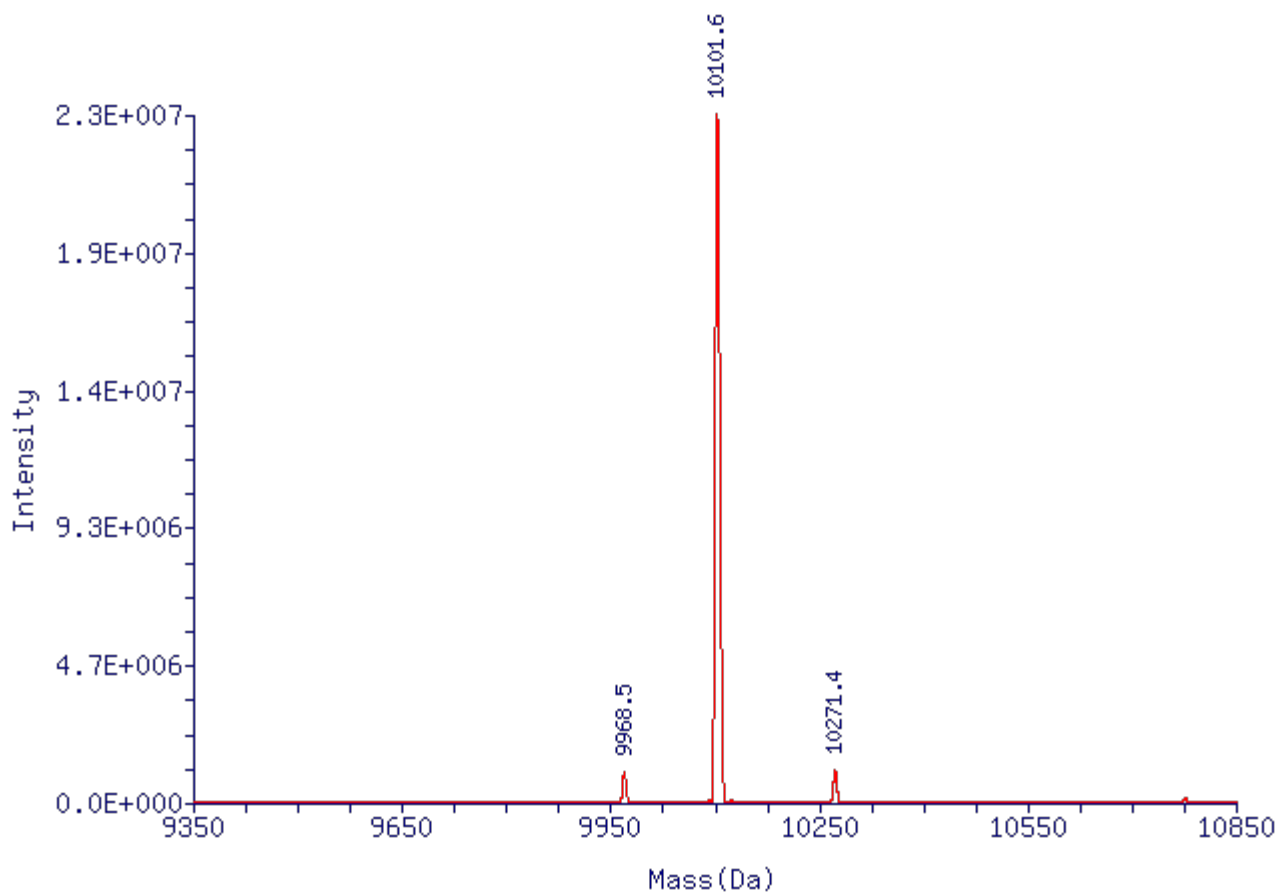
[\[<<\]](#) [\[Top\]](#) [\[ESI Mass Spectrum\]](#) [\[Zoom Deconvolution\]](#) [\[Deconvolution Peak Report\]](#) [\[View Data\]](#) [\[Log File\]](#)

**Deconvoluted Mass Spectrum of F+T01, RT = 0.43 min:**



---

[\[<<\]](#) [\[Top\]](#) [\[ESI Mass Spectrum\]](#) [\[Deconvolution\]](#) [\[Deconvolution Peak Report\]](#) [\[View Data\]](#) [\[Log File\]](#)  
**Zoom Deconvoluted Mass Spectrum of F+T01, RT = 0.43 min:**



[<<] [Top]

| Result Code | Indication   |
|-------------|--|
| Green       | Target mass found in chromatogram as the most abundant component within 0.040% mass error tolerance  |
| Blue        | Target mass found as a major component or as a minor component with other target masses, but NOT as most abundant component in chromatogram  |
| Purple      | Target mass found in chromatogram with either or all of the following:<br>(a) other non-target components present in spectrum > 30% abundance<br>(b) low spectral quality (low intensity and/or score) |
| Orange      | Target mass found in chromatogram, but NOT as the most abundant in any of the chromatographic peaks  |
| Red         | Target mass NOT found in chromatogram within 0.040% mass error tolerance   |
| Cyan        | No target masses specified   |

ZNova 3.0.2 ©2001-2013 Novatia, LLC

[&lt;&lt;]

Data File: E:\LTQ6\2023\0409\HPLC\H-20\1937422809-1.raw

Acquisition Date: 4/9/2023

Sample Name: TTTAAAAAAAAAAAAAAAAAAAAAAAAAAAAA

Sample ID: F+T01

Position: 11

Inj Vol: 30

Instrument Method: C:\Xcalibur\methods\oligo\_htcs

Processing Method: C:\Xcalibur\methods\oligo\_htcs



## Target Mass Summary

| RT (min) | Target Mass (Da) | Observed Mass (Da) | Mass Error       | Intensity | % Abundance (in Spectrum) | % Purity (Estimate) | Identity    | Result Code |
|----------|------------------|--------------------|------------------|-----------|---------------------------|---------------------|-------------|-------------|
| 0.42     | 10082.9          | 10084.6            | 1.7 Da (0.017 %) | 1.65E+007 | 90.65                     | 92.76               | Target Mass |             |

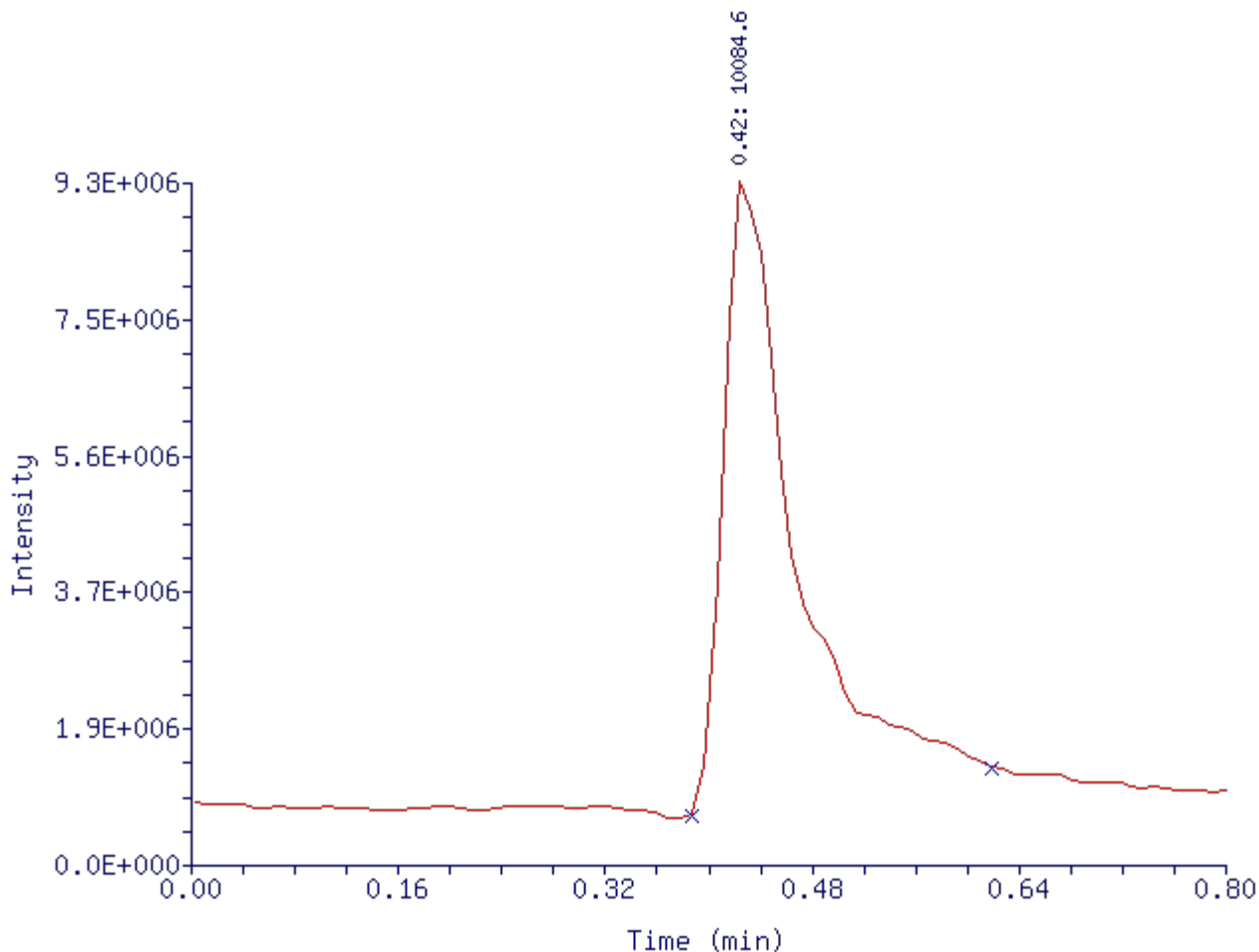
## Chromatogram Summary

| RT (min) | Base Peak Mass (Da) | Intensity | Spectral Quality | LC/MS Peak Area | LC/MS Area Percent |
|----------|---------------------|-----------|------------------|-----------------|--------------------|
| 0.42     | 10084.6             | 1.65E+007 | ok               | 3.28E+007       | 100.00             |

[&lt;&lt;] [Top]

LC/MS Chromatogram of F+T01:

TIC

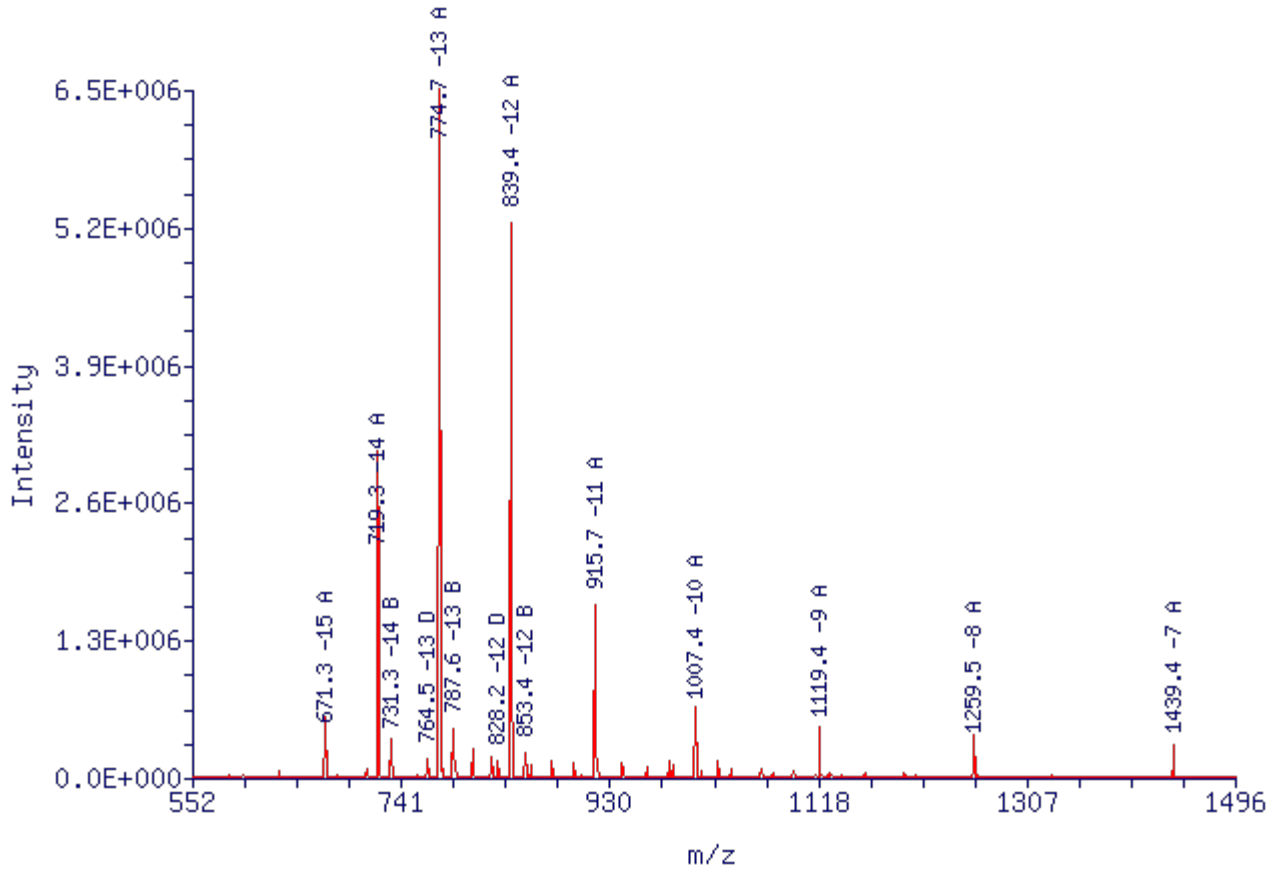


[\[<<\]](#) [\[Top\]](#) [\[Deconvolution\]](#) [\[Zoom Deconvolution\]](#) [\[Deconvolution Peak Report\]](#) [\[View Data\]](#) [\[Log File\]](#)

**ESI Mass Spectrum of F+T01, RT = 0.42 min:**

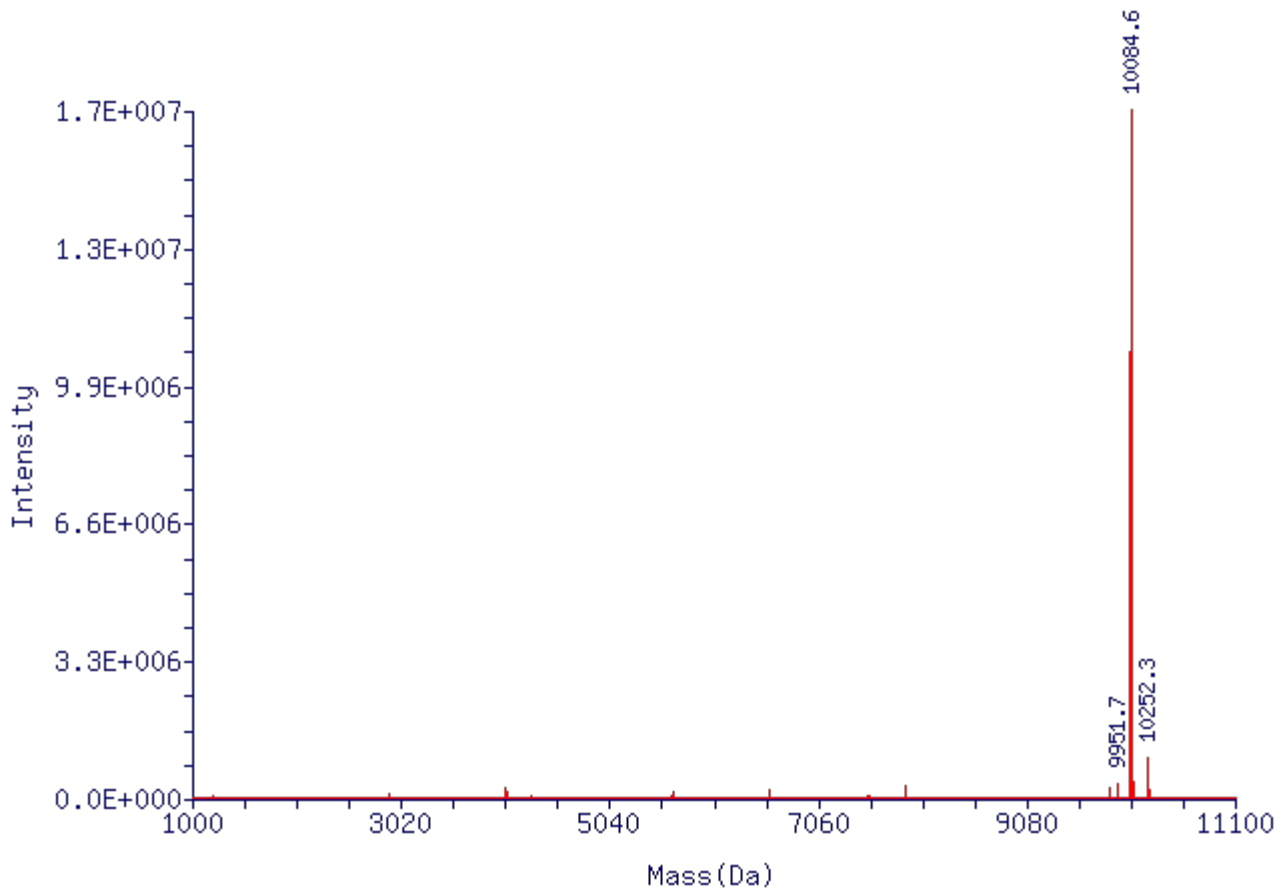
Scan Mode: - c ESI Full ms

Scans Averaged: 42-51 Minus: 17-38, 67



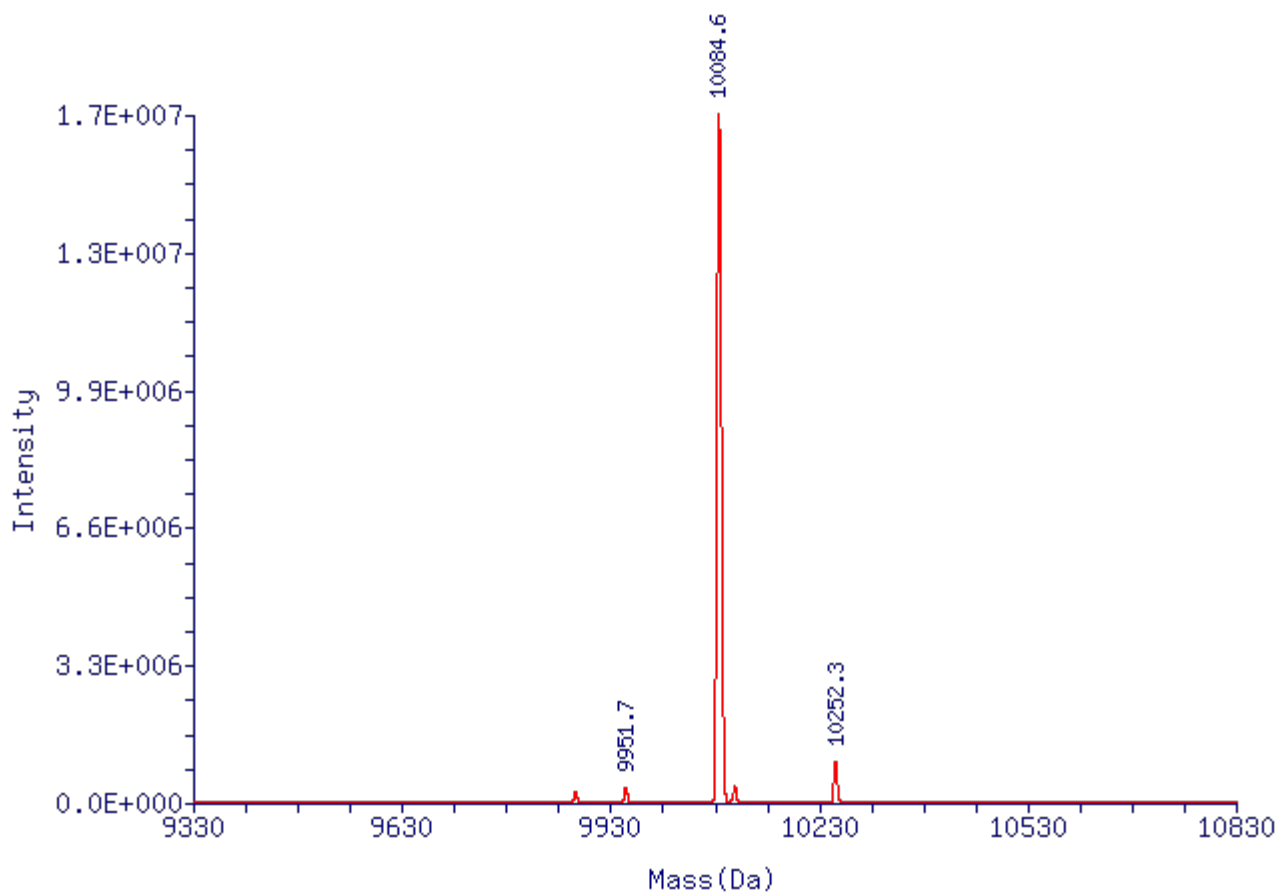
[\[<<\]](#) [\[Top\]](#) [\[ESI Mass Spectrum\]](#) [\[Zoom Deconvolution\]](#) [\[Deconvolution Peak Report\]](#) [\[View Data\]](#) [\[Log File\]](#)

**Deconvoluted Mass Spectrum of F+T01, RT = 0.42 min:**



---

[\[<<\]](#) [\[Top\]](#) [\[ESI Mass Spectrum\]](#) [\[Deconvolution\]](#) [\[Deconvolution Peak Report\]](#) [\[View Data\]](#) [\[Log File\]](#)  
**Zoom Deconvoluted Mass Spectrum of F+T01, RT = 0.42 min:**



[<<] [Top]

| Result Code | Indication   |
|-------------|--|
| Green       | Target mass found in chromatogram as the most abundant component within 0.040% mass error tolerance  |
| Blue        | Target mass found as a major component or as a minor component with other target masses, but NOT as most abundant component in chromatogram  |
| Purple      | Target mass found in chromatogram with either or all of the following:<br>(a) other non-target components present in spectrum > 30% abundance<br>(b) low spectral quality (low intensity and/or score) |
| Orange      | Target mass found in chromatogram, but NOT as the most abundant in any of the chromatographic peaks  |
| Red         | Target mass NOT found in chromatogram within 0.040% mass error tolerance   |
| Cyan        | No target masses specified   |

ZNova 3.0.2 ©2001-2013 Novatia, LLC



[&lt;&lt;]

Data File: E:\LTQ6\2023\0409\HPLC\H-20\1937422810-1.raw

Acquisition Date: 4/9/2023

Sample Name: TTTTAAAAAAAAAAAAAAAAAAAAAAAAAAAA

Sample ID: F+T01

Position: 8

Inj Vol: 30

Instrument Method: C:\Xcalibur\methods\oligo\_htcs

Processing Method: C:\Xcalibur\methods\oligo\_htcs



## Target Mass Summary

| RT (min) | Target Mass (Da) | Observed Mass (Da) | Mass Error       | Intensity | % Abundance (in Spectrum) | %Purity (Estimate) | Identity    | Result Code |
|----------|------------------|--------------------|------------------|-----------|---------------------------|--------------------|-------------|-------------|
| 0.42     | 10064.9          | 10066.5            | 1.6 Da (0.016 %) | 8.02E+006 | 73.71                     | 77.80              | Target Mass |             |

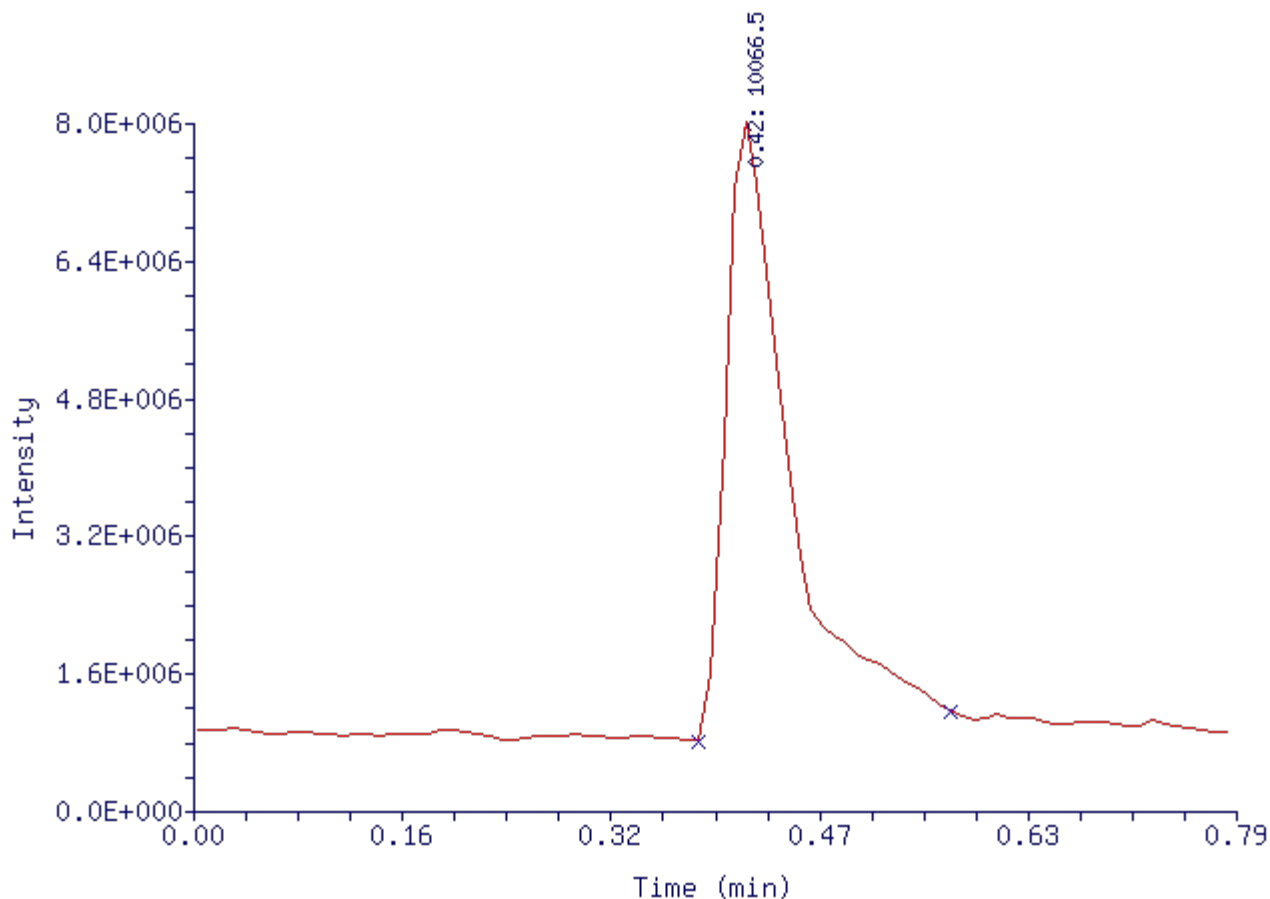
## Chromatogram Summary

| RT (min) | Base Peak Mass (Da) | Intensity | Spectral Quality | LC/MS Peak Area | LC/MS Area Percent |
|----------|---------------------|-----------|------------------|-----------------|--------------------|
| 0.42     | 10066.5             | 8.02E+006 | ok               | 2.34E+007       | 100.00             |

[&lt;&lt;] [Top]

LC/MS Chromatogram of F+T01:

TIC

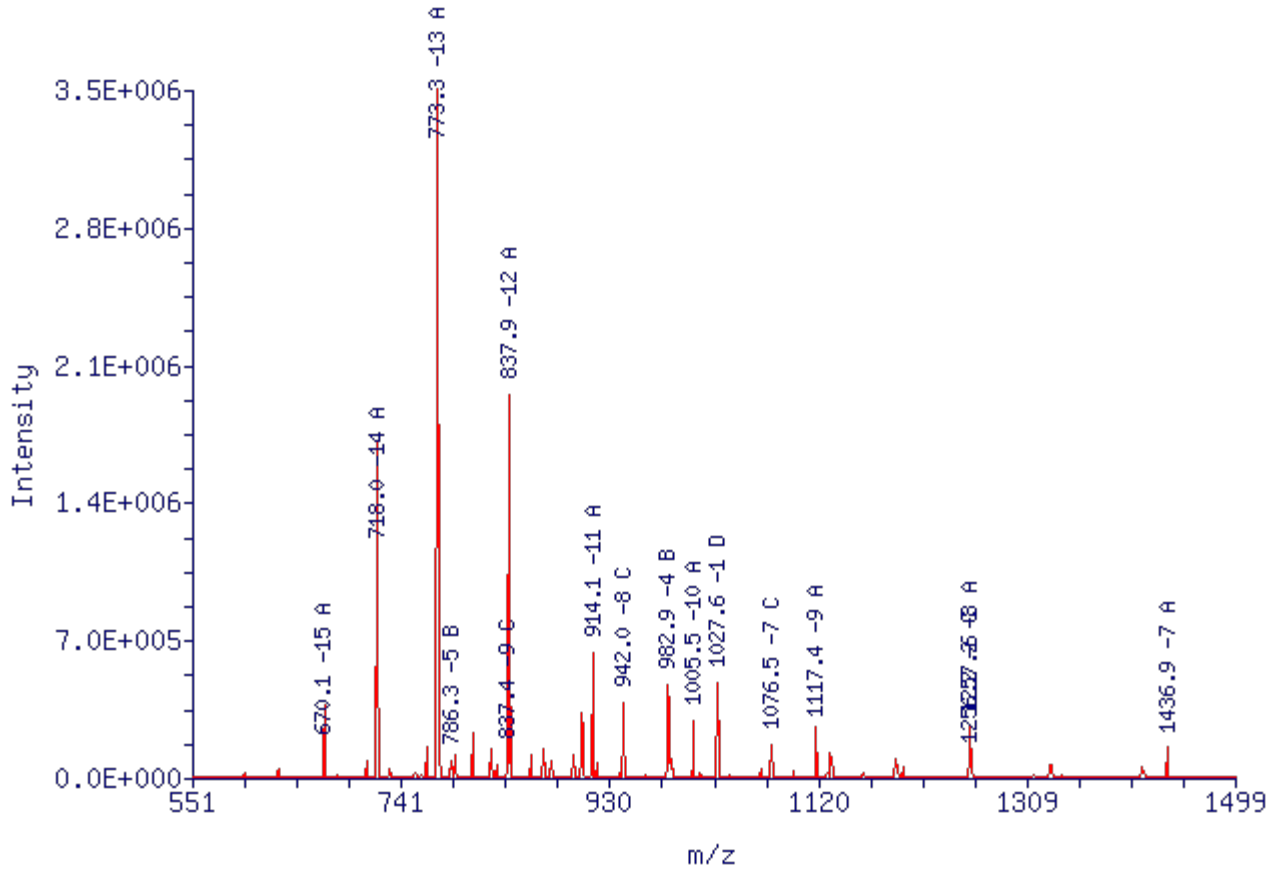


[<<] [Top] [Deconvolution] [Zoom Deconvolution] [Deconvolution Peak Report] [View Data] [Log File]

**ESI Mass Spectrum of F+T01, RT = 0.42 min:**

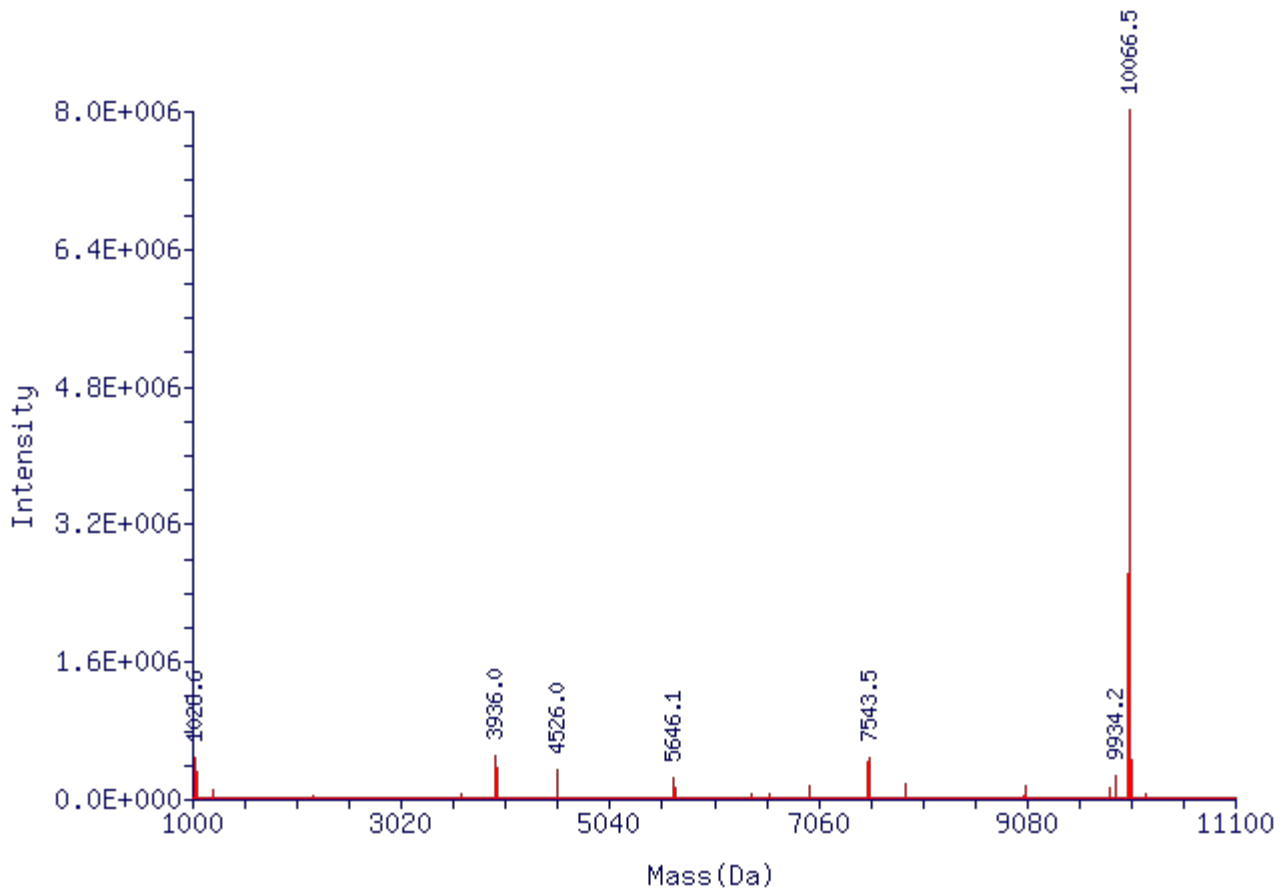
Scan Mode: - c ESI Full ms

Scans Averaged: 42-51 Minus: 17-39, 67

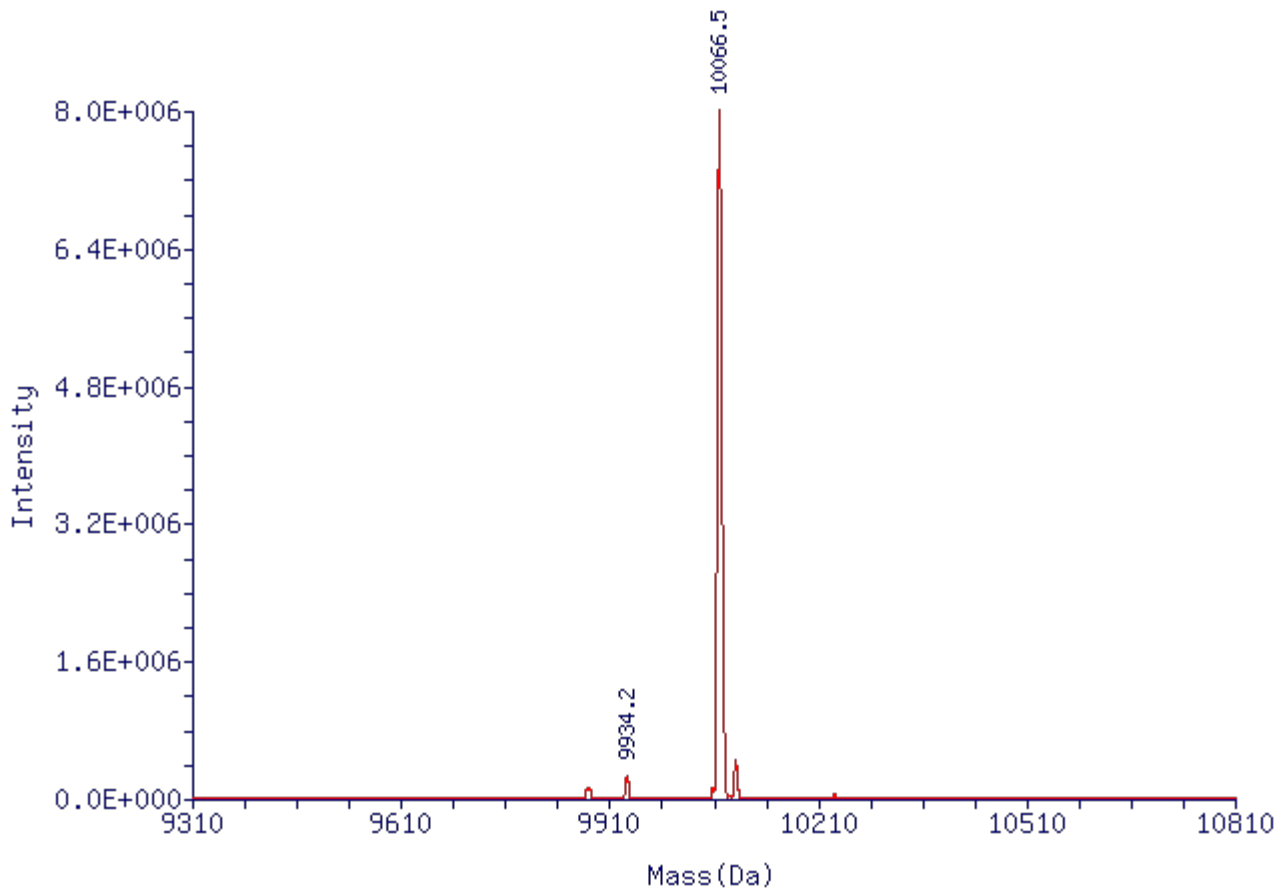


[<<] [Top] [ESI Mass Spectrum] [Zoom Deconvolution] [Deconvolution Peak Report] [View Data] [Log File]

**Deconvoluted Mass Spectrum of F+T01, RT = 0.42 min:**



[<<] [Top] [ESI Mass Spectrum] [Deconvolution] [Deconvolution Peak Report] [View Data] [Log File]  
**Zoom Deconvoluted Mass Spectrum of F+T01, RT = 0.42 min:**



[<<] [Top]

| Result Code | Indication   |
|-------------|--|
| Green       | Target mass found in chromatogram as the most abundant component within 0.040% mass error tolerance  |
| Blue        | Target mass found as a major component or as a minor component with other target masses, but NOT as most abundant component in chromatogram  |
| Purple      | Target mass found in chromatogram with either or all of the following:<br>(a) other non-target components present in spectrum > 30% abundance<br>(b) low spectral quality (low intensity and/or score) |
| Orange      | Target mass found in chromatogram, but NOT as the most abundant in any of the chromatographic peaks  |
| Red         | Target mass NOT found in chromatogram within 0.040% mass error tolerance   |
| Cyan        | No target masses specified   |

ZNova 3.0.2 ©2001-2013 Novatia, LLC