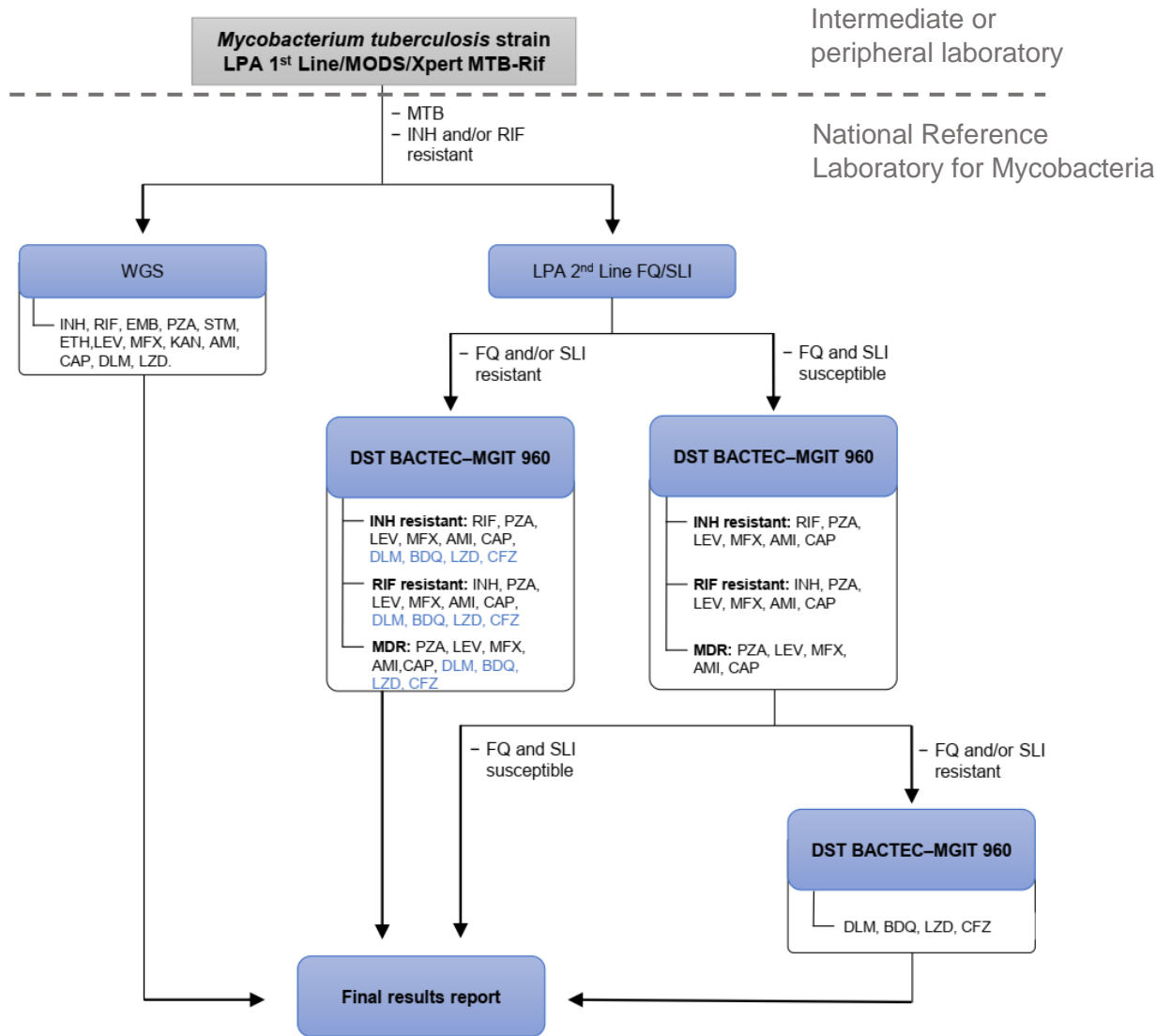


### S1 Fig: Workflow designed for the study.

The figure shows the flow of strains sent to the LRNM for routine DST using the genotypic LPA GenoType MTBDRs/ and the phenotypic BACTEC MGIT methods, alongside the parallel work carried out using WGS for the study.



**DST:** Drug Susceptibility Test, **MGIT:** Mycobacterial Growth Indicator Tube, **WGS:** Whole Genome Sequencing, **LPA:** Line probe Assay, **FQ:** Fluoroquinolone, **SLI:** Second-Line Injectable, **MODS:** Microscopic-Observation Drug Susceptibility assay, **INH:** isoniazid, **RIF:** rifampicin, **EMB:** ethambutol, **PZA:** pyrazinamide, **STM:** streptomycin, **ETH:** ethionamide, **LEV:** levofloxacin, **MFX:** moxifloxacin, **KAN:** kanamycin, **AMI:** amikacin, **CAP:** capreomycin, **DLM:** delamanid, **BDQ:** bedaquiline, **LZD:** linezolid, **CFZ:** clofazimine.