

## SUPPLEMENTARY MATERIAL

### **SS-31 TREATMENT AMELIORATES CARDIAC MITOCHONDRIAL MORPHOLOGY AND DEFECTIVE MITOPHAGY IN A MURINE MODEL OF BARTH SYNDROME**

*Silvia Russo<sup>1#</sup>, Domenico De Rasmò<sup>2#</sup>, Roberta Rossi<sup>3</sup>, Anna Signorile<sup>1\*</sup> & Simona Lobasso<sup>1\*</sup>*

<sup>1</sup>Department of Translational Biomedicine and Neuroscience (DiBraIn), University of Bari Aldo Moro, Bari, Italy;

<sup>2</sup>CNR-Institute of Biomembranes, Bioenergetics and Molecular Biotechnologies, Bari, Italy; <sup>3</sup>Department of Precision and Regenerative Medicine and Ionian Area (DiMePREJ), University of Bari Aldo Moro, Bari, Italy

**Legend Supplementary Figures 1-3.**

Stain free images of full-length gels are shown on the right of each blot. The images show the total proteins used for normalization of each lane. Precision Plus Protein™ All Blue Prestained Protein Standards #1610373 in the range of 10–250 kDa were used to identify protein molecular weights.

Each PVDF membrane was cut into sections with a razor blade, before blotting. Each section was incubated with a different primary antibody, as several of the selected primary antibodies belong to the same species. All blots were exposed separately with a BioRad ChemiDoc Touch Imaging (*Bio-Rad*) to avoid signal saturation. The optimal exposure image selected for each protein is shown. Cropped areas showed in the figures of the manuscript are marked by red lines.

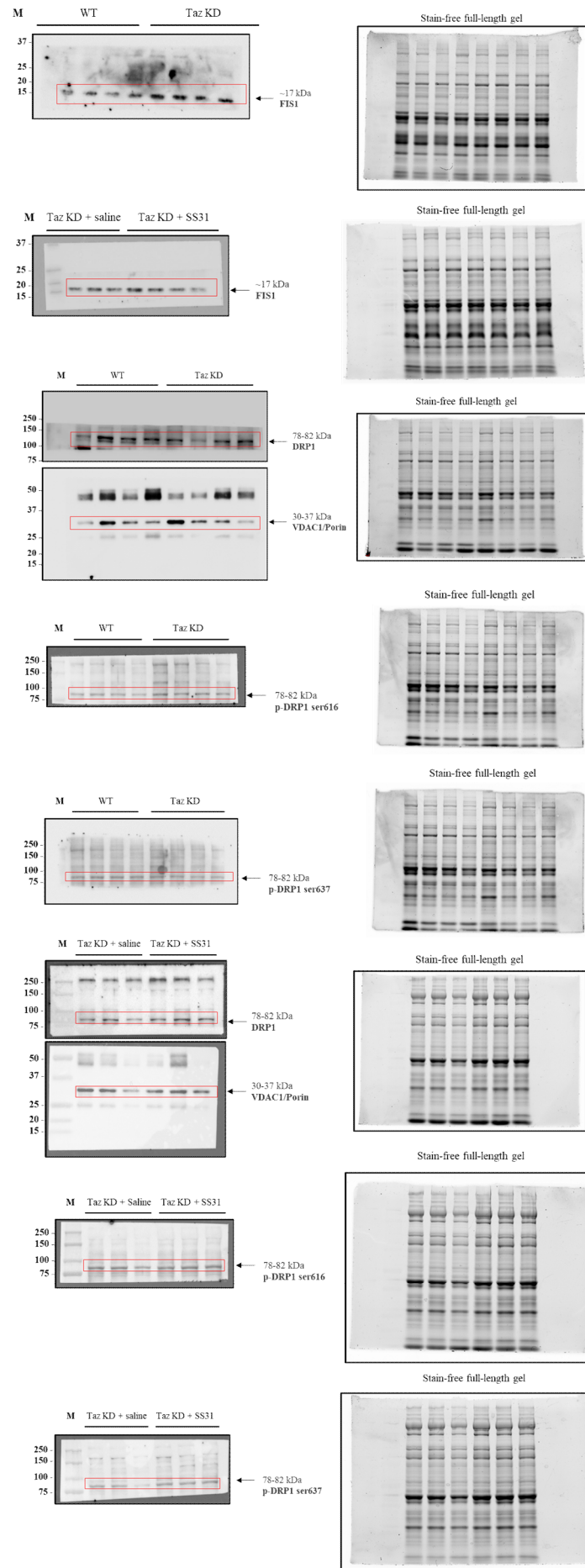


Figure S1

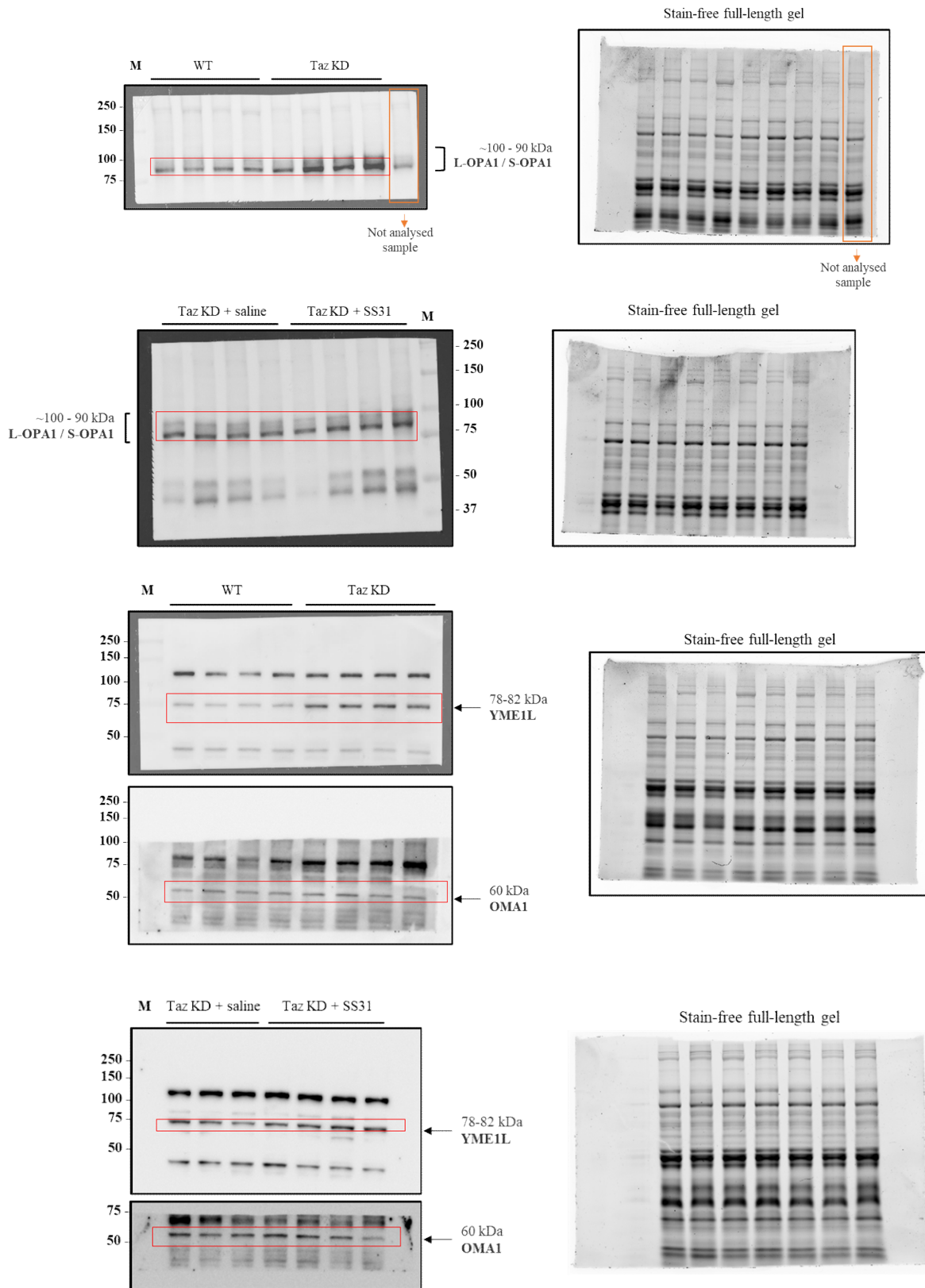


Figure S2

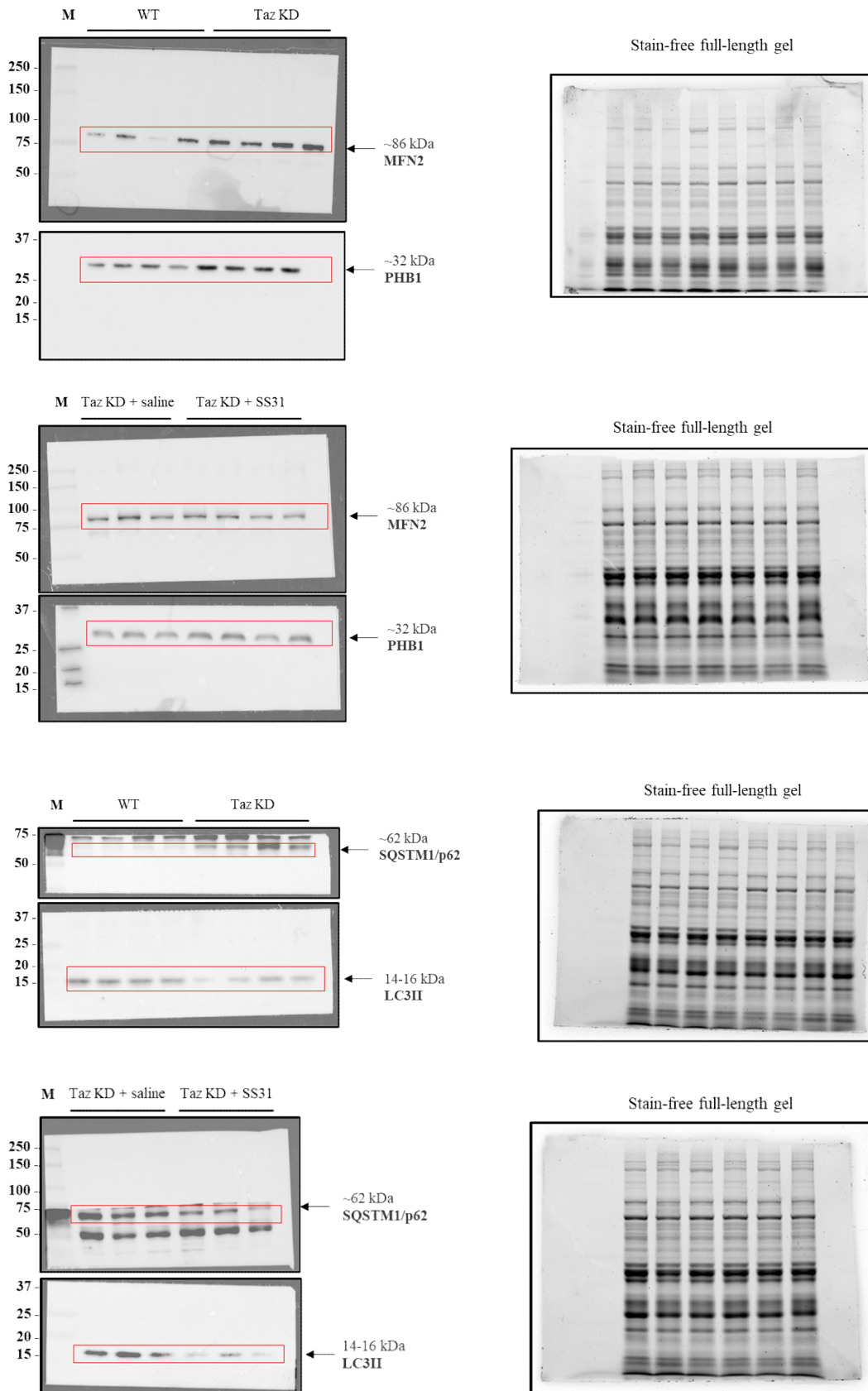


Figure S3

**Supplementary Table 1:  
List of antibodies used for immunoblotting analysis.**

Antibody	Host animal	Dilution	Distributor, Cat. Num.
Anti-FIS1	Rabbit, polyclonal	1:1,000	Merck Millipore, ABC67
Anti-DRP1	Rabbit, polyclonal	1:200	Santa Cruz Biotechnology, Inc, sc-32898
p-DRP1 ser(616)	Rabbit, polyclonal	1:500	Cell Signaling Technology, Inc, 3455
p-DRP1 ser(637)	Rabbit, polyclonal	1:500	Cell Signaling Technology, Inc, 4867
VDAC1/Porin	Mouse, monoclonal	1:1,000	Molecular Probes, A31855
OPA1	Mouse, monoclonal	1:2,000	Thermo Fisher Scientific, Inc, MA5-16149
YME1L	Rabbit, polyclonal	1:2,000	Abcam, ab170123
OMA1	Rabbit, polyclonal	1:500	Abcam, ab154949
MFN2	Rabbit, monoclonal	1:2,000	Cell Signaling Technology, Inc, 11925
PHB1	Rabbit, polyclonal	1:1,000	Cell Signaling Technology, Inc, 2426
SQSTM1/p62	Rabbit, polyclonal	1:1,000	MBL International, PM045
LC3	Rabbit, polyclonal	1:1,000	Cell Signaling Technology, Inc, 2775