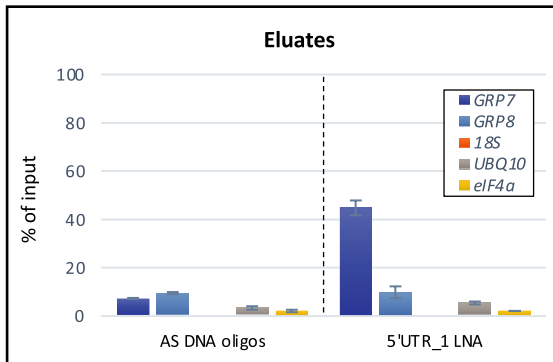


Additional file 12

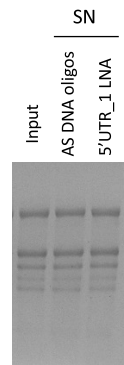
(A)

DNA probe #	Sequence (5'→3')	Probe position	Length	% GC
1	TTGGGGACATATCACGTGAC	24	20 nt	50.0%
2	CGATGTAGACGAAGTCTCGT	159	20 nt	50.0%
3	CAACGAAGCACCGATACTCA	259	20 nt	50.0%
4	CCAGTCTCACGATCGTTAAT	359	20 nt	45.0%
5	GTTAACAGTGATGCTACGGC	468	20 nt	50.0%
6	ACCACCTCTTGAGGAGTAAC	651	20 nt	50.0%
7	AAAGGAATTACCATCCTCCA	760	20 nt	40.0%
8	CATTACGTTTCCAGATACCA	908	20 nt	40.0%
9	CGGTATCCGATTAGCATTTTC	1009	20 nt	45.0%
10	GGTTTCTACTTCATTGTTGA	1129	20 nt	35.0%

(B)



(C)



**Additional file 12: Capture with antisense DNA oligonucleotides.**

(A) Sequences of antisense (AS) DNA oligonucleotides directed against *AtGRP7*. (B) Relative *AtGRP7*, 18S rRNA, *UBIQUITIN 10*, and *eIF4a* RNA levels in the eluates of *AtGRP7*-GFP *grp7-1* plants upon capture with AS DNA oligonucleotides or with the 5'UTR\_1 LNA oligo. (C) Agarose-formaldehyde gel electrophoresis of total RNA in the lysate (input) and the supernatant (SN) after hybridization with AS DNA oligonucleotides or the 5'UTR\_1 LNA oligo in *AtGRP7*-GFP *grp7-1* plants.