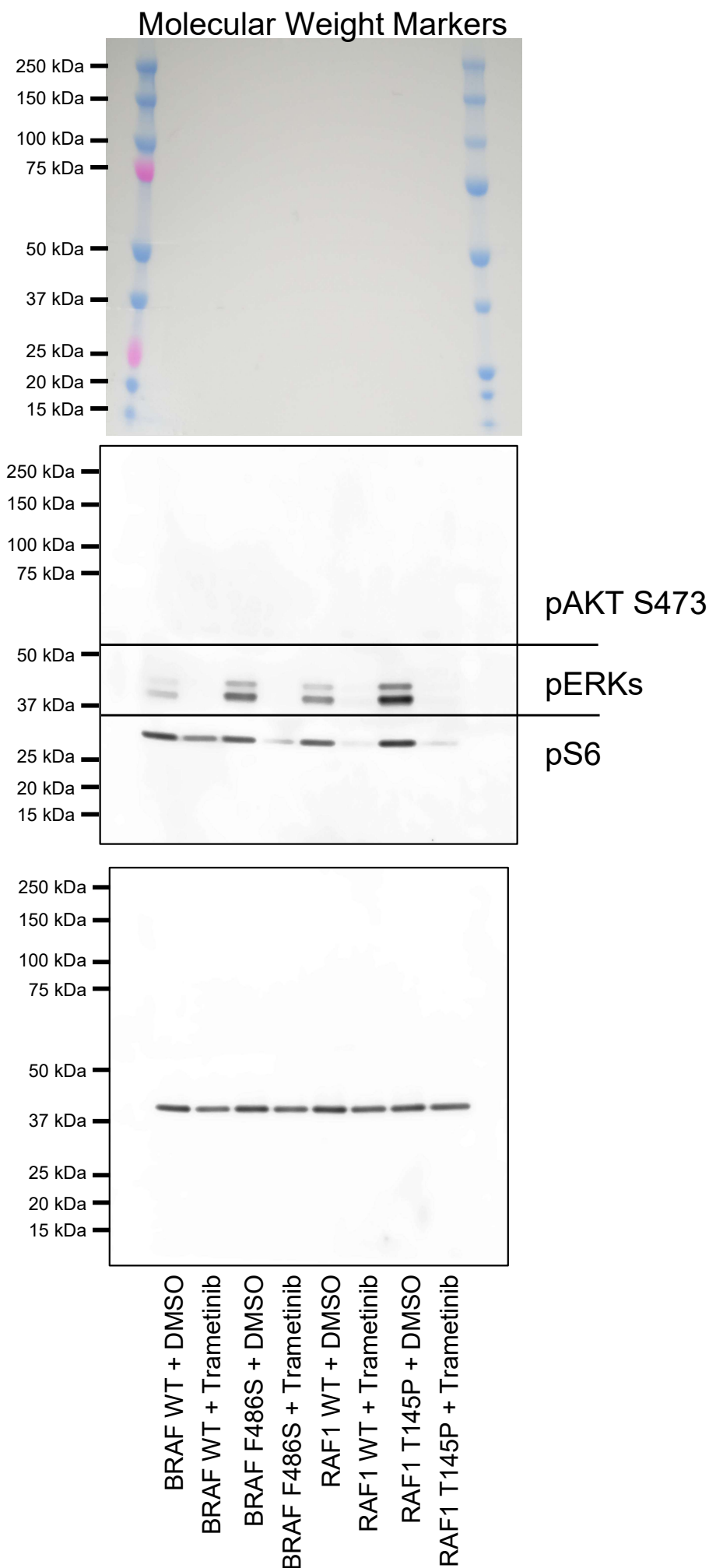


# Supplemental Figure 5 Experimental Replicate 1

Membrane was cut  
into 3 pieces and  
each piece was  
blotted as indicated

The membrane was  
stripped and re-  
blotted for GAPDH

BRAF Lanes were used in  
quantitation in Sup Fig 5A.  
RAF1 lanes were used in  
quantitation in Sup Fig 5C  
and are the lanes presented  
in the image in Sup Fig 5C.

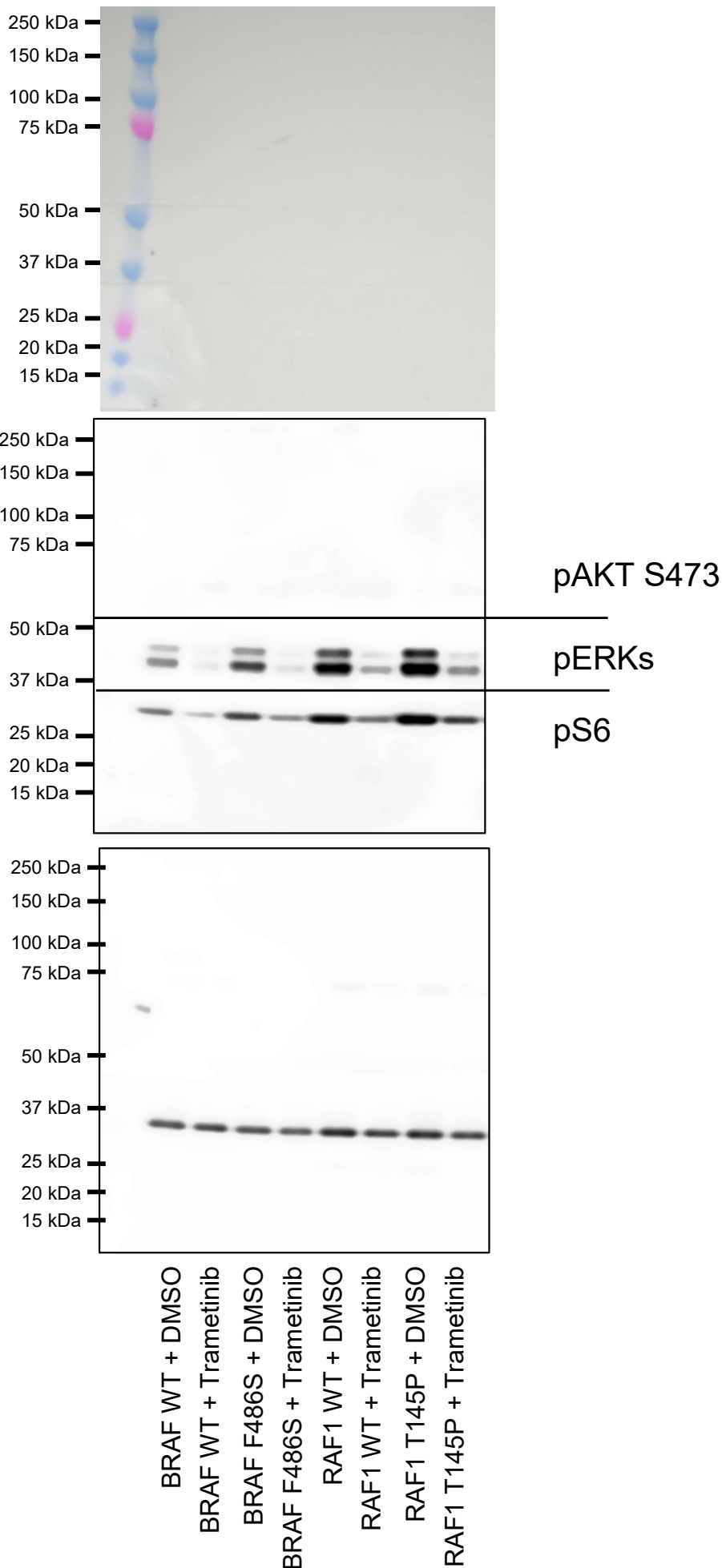


# Supplemental Figure 5 Experimental Replicate 2

Membrane was cut into 3 pieces and each piece was blotted as indicated

The membrane was stripped and re-blotted for GAPDH

## Molecular Weight Markers



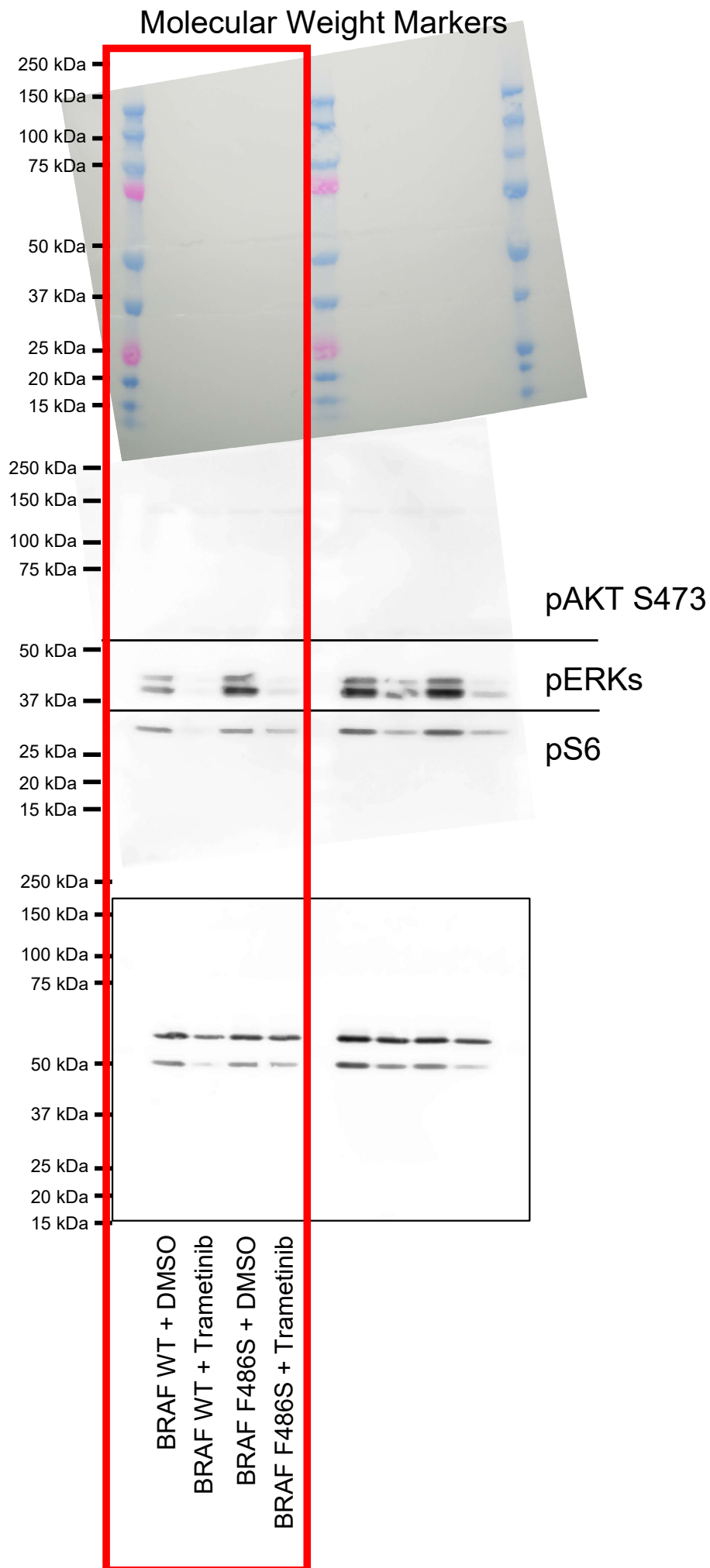
BRAF Lanes were used in quantitation in Sup Fig 5A and are the lanes presented in the image in Sup Fig 5A. RAF1 lanes were used in quantitation in Sup Fig 5C.

Supplemental Figure 5  
Experimental Replicate 3  
For BRAF

Membrane was cut  
into 3 pieces and  
each piece was  
blotted as indicated

The membrane was  
stripped and re-  
blotted for GAPDH

BRAF lanes were used in  
quantitation in Sup Fig 5A.



Supplemental Figure 5  
Experimental Replicate 3  
For RAF1

Membrane was cut  
into 3 pieces and  
each piece was  
blotted as indicated

The membrane was  
stripped and re-  
blotted for GAPDH

RAF1 lanes were used in  
quantitation in Sup Fig 5C.

