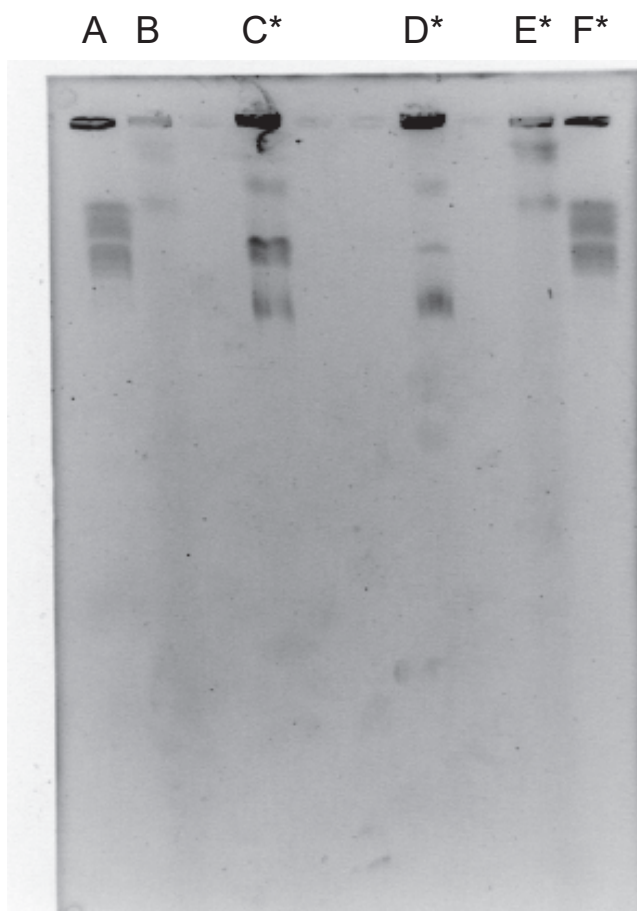


- A - *Hansenula wingei* (marker)
- B - *Kwoniella bestiolae* CBS10118
- C - *Kwoniella europaea* PYCC6329
- D - *Hansenula wingei* (marker)
- E - *Schizosaccharomyces pombe* (marker)

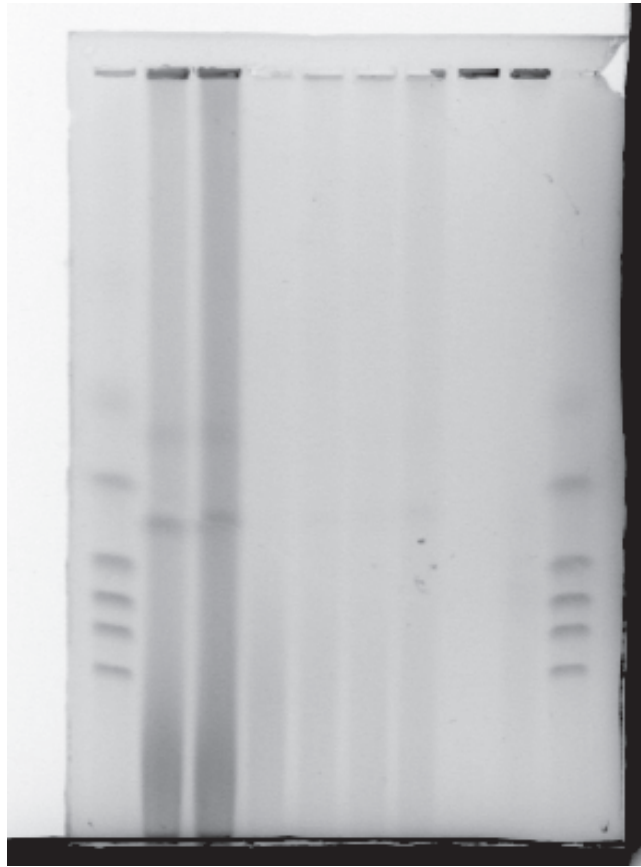
Lanes depicted in **S2A Fig** are indicated by asterisks on the original gel



- A - *Hansenula wingei* (marker)
- B - *Schizosaccharomyces pombe* (marker)
- C - *Kwoniella bestiolae* CBS10118
- D - *Kwoniella europaea* PYCC6329
- E - *Schizosaccharomyces pombe* (marker)
- F - *Hansenula wingei* (marker)

Lanes depicted in **S2B Fig** are indicated by asterisks on the original gel.

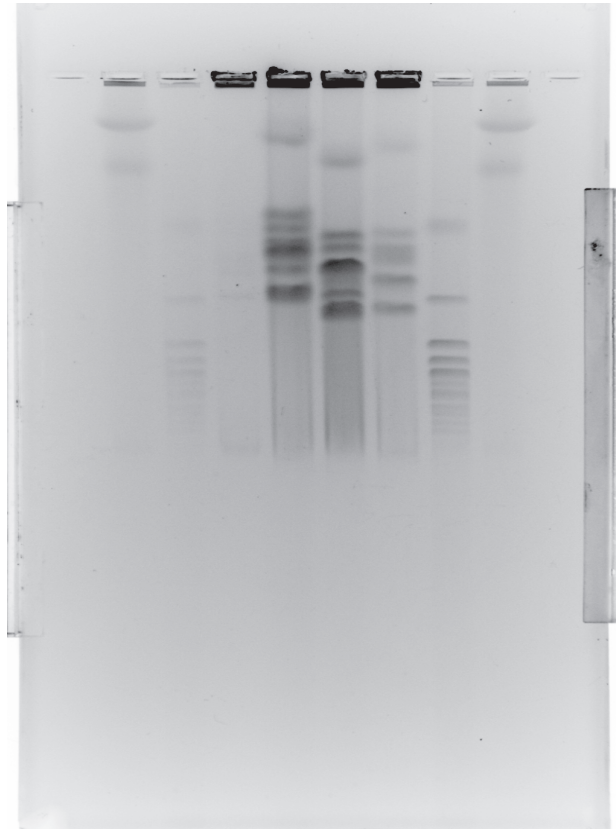
A* B* C D E F G H I J



- A - *Hansenula wingei* (marker)
- B - *Kwoniella mangrovensis* CBS8507 (rep1)
- C - *Kwoniella mangrovensis* CBS8507 (rep2)
- D - *Kwoniella* sp. B9012 (rep1)
- E - *Kwoniella* sp. B9012 (rep1)
- F - *Kwoniella botswanensis* CBS12716 (rep1)
- G - *Kwoniella botswanensis* CBS12716 (rep2)
- H - *Kwoniella europaea* PYCC6329
- I - *Kwoniella bestiolae* CBS10118
- J - *Hansenula wingei* (marker)

Lanes depicted in **S2C Fig** are indicated by asterisks on the original gel.

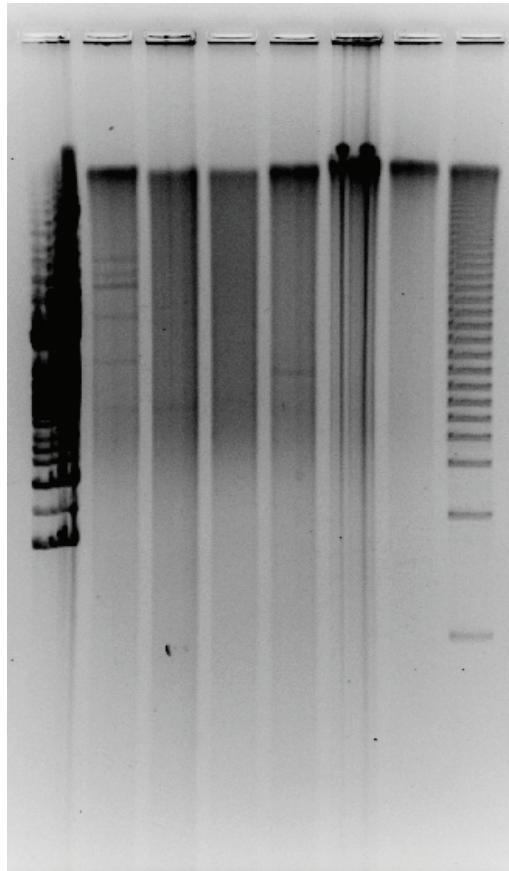
A B C D* E* F* G* H*



- A - *Schizosaccharomyces pombe* (marker)
- B - *Saccharomyces cerevisiae* (marker)
- C - *Kwoniella dendrophila* CBS6074
- D - *Kwoniella dejecticola* CBS10117
- E - *Kwoniella pini* CBS 10737
- F - *Kwoniella shivajii* CBS11374
- G - *Saccharomyces cerevisiae* (marker)
- H - *Schizosaccharomyces pombe* (marker)

Lanes depicted in **S2D Fig** are indicated by asterisks on the original gel.

A B* C* D* E* F G H*



- A - 8-48 kb ladder (marker)
- B - *Kwniella* sp. DSM27419
- C - *Kwniella* sp. CBS6097
- D - *Kwniella* sp. CBS9459
- E - *Kwniella newhampshirensis* CBS13917
- F - *Cryptococcus depauperatus* CBS7841
- G - *Cryptococcus depauperatus* CBS7855
- H - 5 kb ladder (marker)

Lanes depicted in **S16A Fig** are indicated by asterisks on the original gel.