

Supplemental Figure

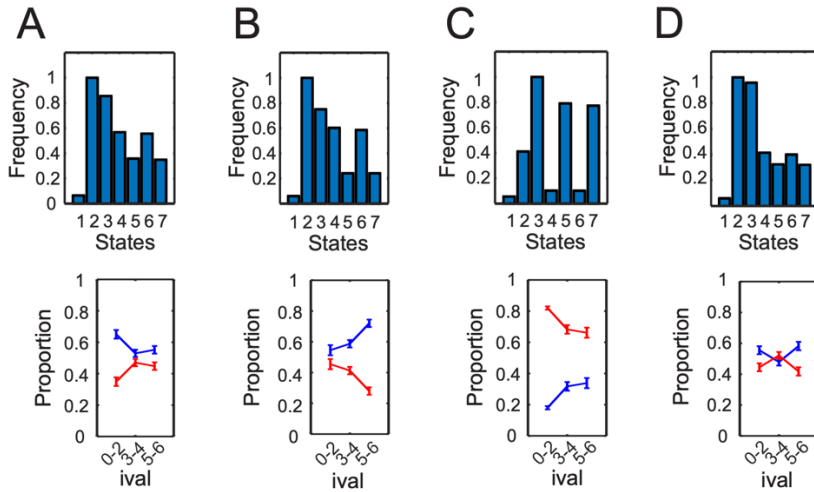


Figure S1: Modeling approaches for G2. A) $\alpha=0.2$, ϵ -greedy=0.8, no dbias. B) $\alpha=0.5$, ϵ -greedy=0.5, no dbias. C) $\alpha=0.97$, ϵ -greedy=0.4, uniform dbias=1. D) $\alpha=0.2$, ϵ -greedy=0.8, uniform dbias=0.5. In each subpanel, the state frequency distribution (top) and choice distribution with respect to ival (bottom) are plotted as in Figure 2.