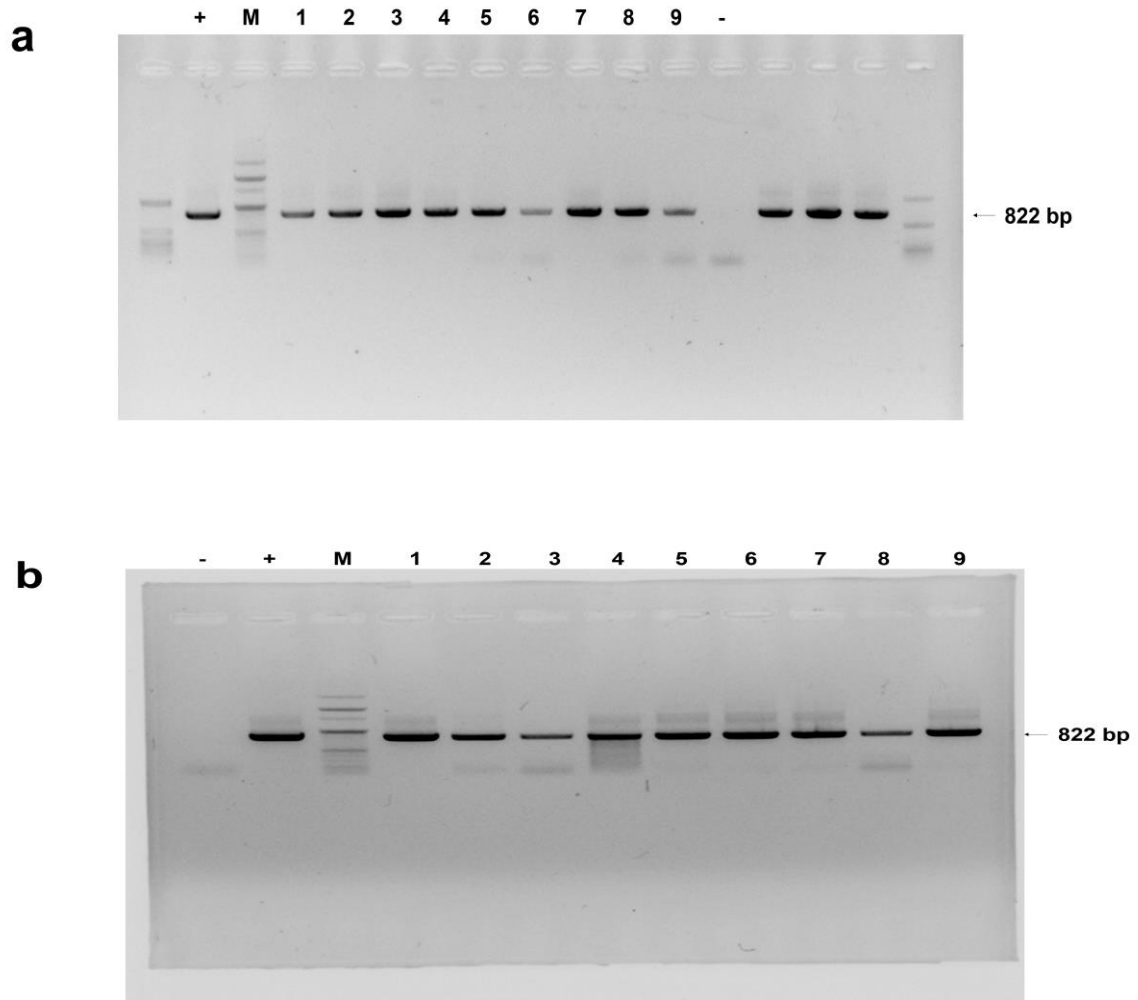


Supplementary Information 2



Supplementary Figure S3. Original gels used to prepare Figure 4a–b. *Apis mellifera* filamentous virus (AmFV) detection in *Varroa destructor* mites and honeybee samples. (a) Lanes 1–9 indicate polymerase chain reaction products obtained from *V. destructor* mite samples, (b) lanes 1–9 indicate polymerase chain reaction products obtained from honeybee samples; M, 100-bp DNA ladder (Enzymomics, Daejeon, ROK); (+), positive control: PCR using plasmid of *Bro-N* gene cloned pGem–T vector as DNA template; (–), negative control: PCR without DNA template.