

Supplemental Online Content

Tougeron D, Dahan L, Evesque L, et al. FOLFIRI plus durvalumab with or without tremelimumab in second-line treatment of advanced gastric or gastroesophageal junction adenocarcinoma: the PRODIGE 59-FFCD 1707-DURIGAST Randomized Clinical Trial. *JAMA Oncol*. Published online April 4, 2024. doi:10.1001/jamaoncol.2024.0207

eTable 1. Univariate and multivariate analysis of predictive factors of progression-free survival

eFigure 1. Progression-free survival according to combined positive score (CPS)

eFigure 2. Progression-free survival according to tumor proportion score (TPS)

eFigure 3. Time to deterioration (10 points) in global quality of life score

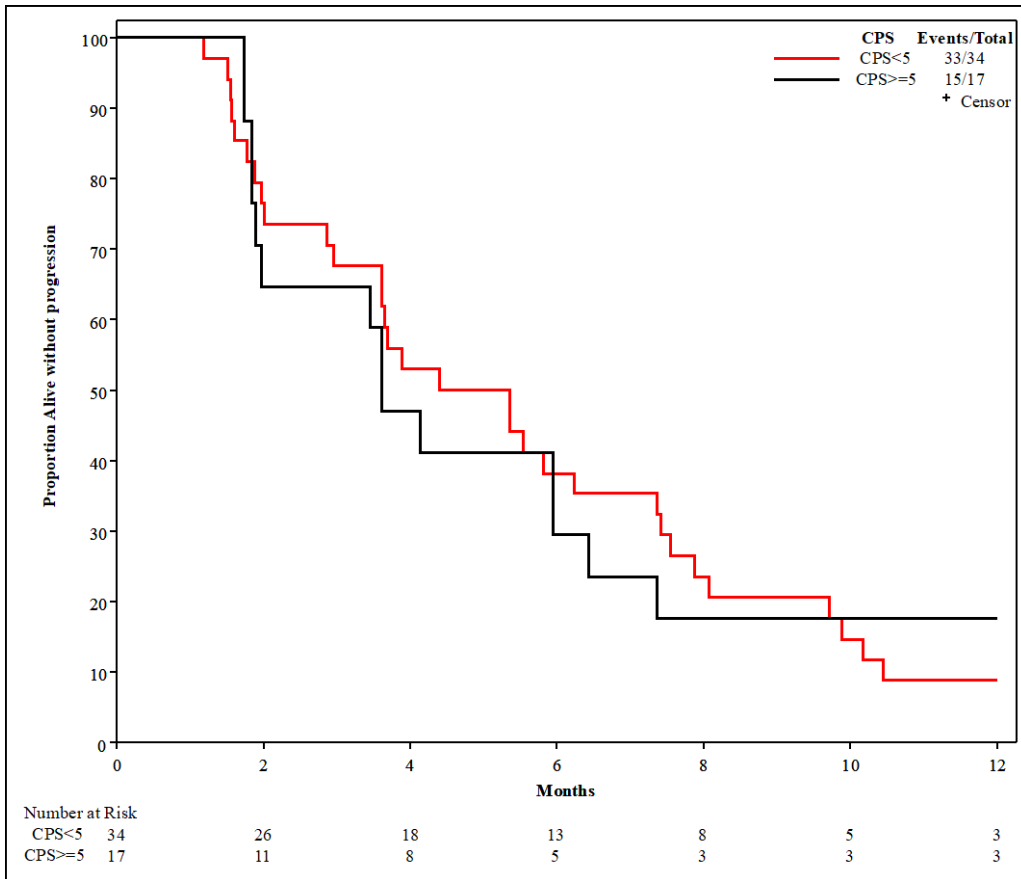
This supplemental material has been provided by the authors to give readers additional information about their work.

eTable 1. Univariate and multivariate analysis of predictive of factors of progression-free survival

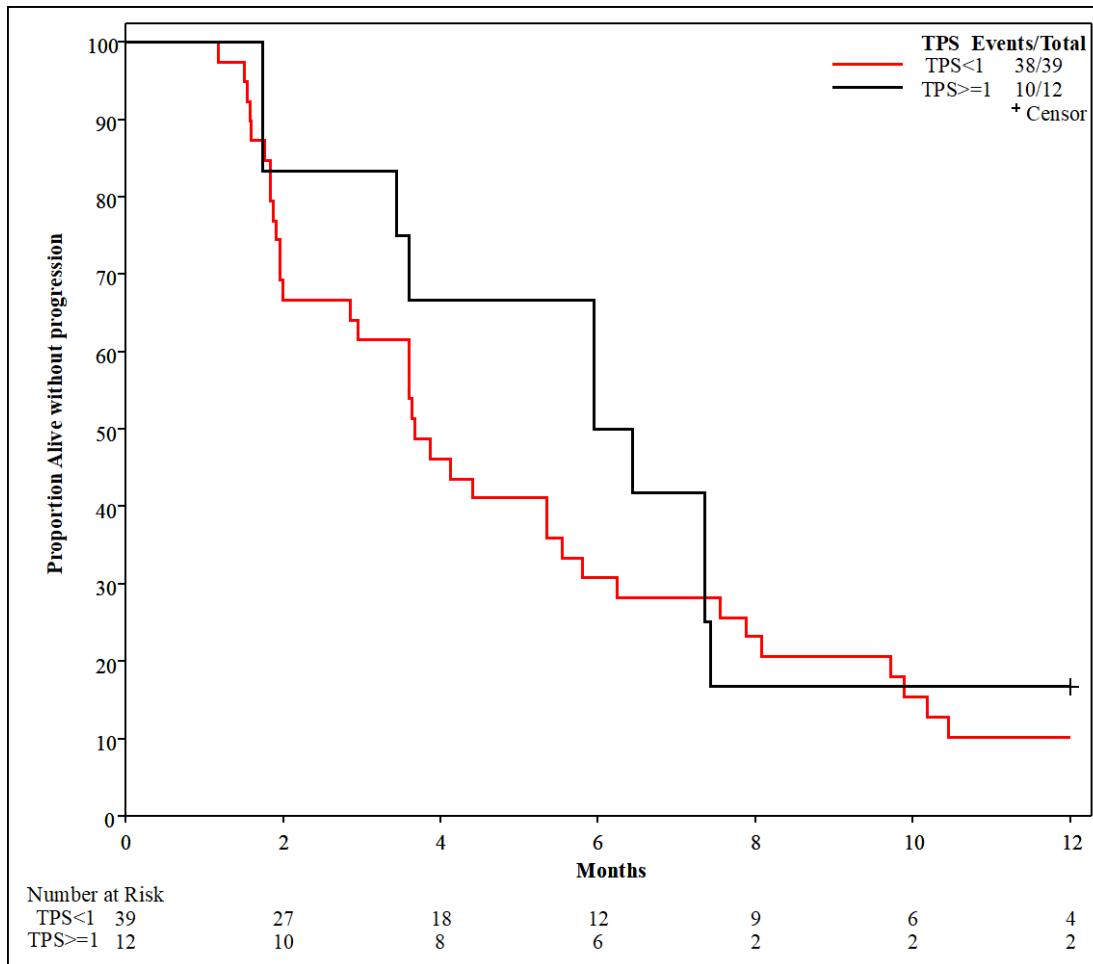
		Events / n (%)	Univariate analysis Hazard ratio [95%CI] p-value	Multivariate analysis Hazard ratio [95%CI] p-value
Arm	Folfiri + durvalumab	44/47 (93.6)	Reference	
	Folfiri + durvalumab + tremelimumab	41/45 (91.1)	0.84 [0.54;1.29]; p=0.429	
Age (years)	≥ 60 years	41/45 (91.1)	Reference	
	< 60 years	44/47 (93.6)	1.22 [0.8;1.88]; p=0.356	
Sex	Female	26/28 (92.9)	Reference	
	Male	59/64 (92.2)	1.14 [0.72;1.82]; p=0.573	
ECOG PS	1	57/61 (93.4)	Reference	
	0	28/31 (90.3)	0.87 [0.55;1.39]; p=0.570	
Liver metastases	Yes	36/37 (97.3)	Reference	Reference
	No	49/55 (89.1)	0.47 [0.3;0.74]; p=0.001	0.46 [0.29;0.74]; p=0.001
Body Mass Index (kg/m²)	> 25 kg/m ²	52/59 (88.1)	Reference	Reference
	≤ 25 kg/m ²	33/33 (100)	1.50 [0.97;2.33]; p=0.071	1.29 [0.82;2.02]; p=0.273
Time to metastatic disease	Synchronous	56/60 (93.3)	Reference	
	Metachronous	29/32 (90.6)	0.73 [0.46;1.14]; p=0.168	
HER2 status	Positive	18/21 (85.7)	Reference	Reference
	Negative	66/70 (94.3)	1.54 [0.91;2.61]; p=0.106	1.59 [0.94;2.71]; p=0.086
Primary tumour site	Stomach	40/43 (93.0)	Reference	
	Gastro-oesophageal junction	45/49 (91.8)	0.76 [0.49;1.16]; p=0.200	
Tumour subtype (Lauren classification)	Diffuse type	35/37 (94.6)	Reference	
	Intestinal type	44/48 (91.7)	0.75 [0.48;1.18]; p=0.216	
	Unknown	5/6 (83.3)	0.55 [0.22;1.41]; p=0.214	
Peritoneal carcinomatosis	Yes	31/33 (93.9)	Reference	
	No	54/59 (91.5)	0.91 [0.59;1.42]; p=0.692	
Previous Treatment	Doublet	53/56 (94.6)	Reference	
	Single agent	2/2 (100)	1.04 [0.25;4.32]; p=0.954	
	Triplet	30/34 (88.2)	0.79 [0.5;1.25]; p=0.310	

ECOG PS: Eastern Cooperative Oncology Group performance status

eFigure 1. Progression-free survival according to combined positive score (CPS)



eFigure 2. Progression-free survival according to tumour proportion score (TPS)



eFigure 3. Time to deterioration (10 points) in global quality of life score

