

408 **Fig. S1.** *Crect*-driven *Irf6* ablation recapitulates the global *Irf6* KO phenotype. **A.** Representative
409 images of littermate control and *Crect*⁺-*Irf6*^{fl/fl} cKO pups at approximately E17. *Crect*⁺-*Irf6*^{fl/fl} pups
410 exhibit “cocooning” taught skin, abnormal and shortened limbs, and an umbilical hernia that has
411 been described for the *Irf6* global KO. **B.** Hematoxylin and eosin staining of coronal sections of
412 approximately E17 *Crect*⁺-*Irf6*^{fl/fl} pup and littermate control. *Crect*⁺-*Irf6*^{fl/fl} cKO pups exhibit severe
413 oral adhesions and cleft palate similar to the global *Irf6* KO mouse. Scale: 100 μM.
414

Figure S1

A

control

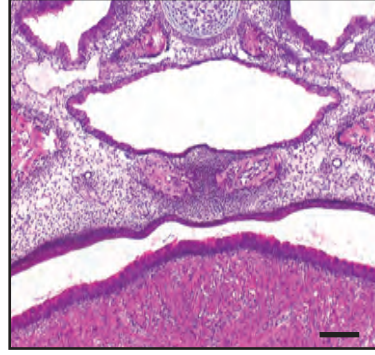


***Crect*⁺**
***Irf6* cKO**



B

control



***Crect*⁺**
***Irf6* cKO**

