

Supplementary Material 5

Plastid phylogenomics reveals evolutionary relationships in the mycoheterotrophic orchid genus *Dipodium* and provides insights into plastid gene degeneration

Stephanie Goedderz^{*}, Mark A. Clements, Stephen J. Bent, James A. Nicholls, Vidushi S. Patel, Darren M. Crayn, Philipp M. Schlüter, Katharina Nargar^{*}

*** Correspondence:**

Stephanie Goedderz: stephanie.goedderz@jcu.edu.au

Katharina Nargar: katharina.nargar@csiro.au

Maximum-clade-credibility tree from Bayesian divergence-time estimations of Orchidaceae.

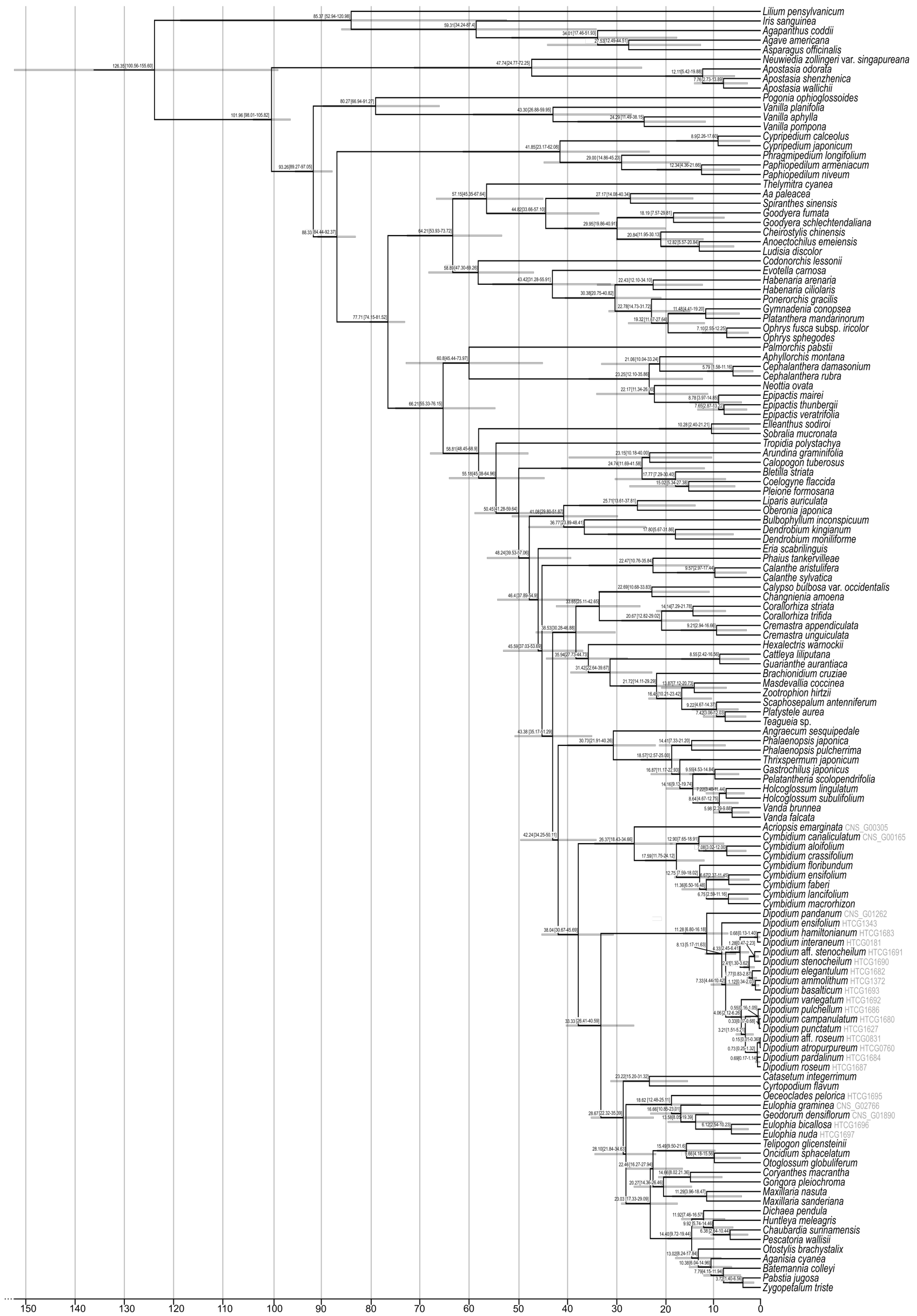


Figure S5.1: Chronogram of Orchidaceae. Maximum-clade-credibility tree from Bayesian divergence-time estimation in BEAST2 based on 30 plastid loci, 134T and an optimised relaxed molecular clock model under the birth-death prior. Divergence times (million years ago) are shown at each node, together with 95% highest posterior density (HDP) values indicated by grey bars and values in parentheses.