

## Supplementary materials

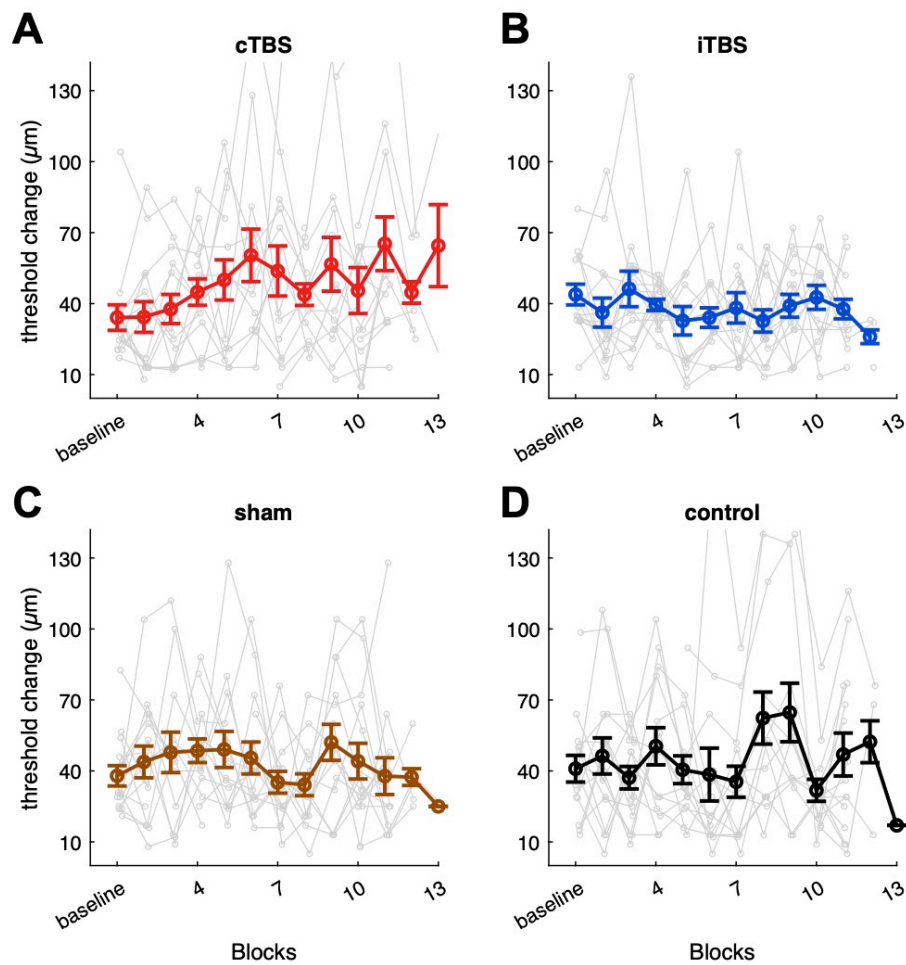


Figure S1: Spatial amplitude discrimination thresholds (SDT) for each block before (baseline) and after stimulations are shown for individuals (small dots, thin lines) and group mean data (large dots, thick lines). Error bars show standard error. A: cTBS stimulation, B: iTBS stimulation, C: sham stimulation, D: control session (no TMS stimulation).

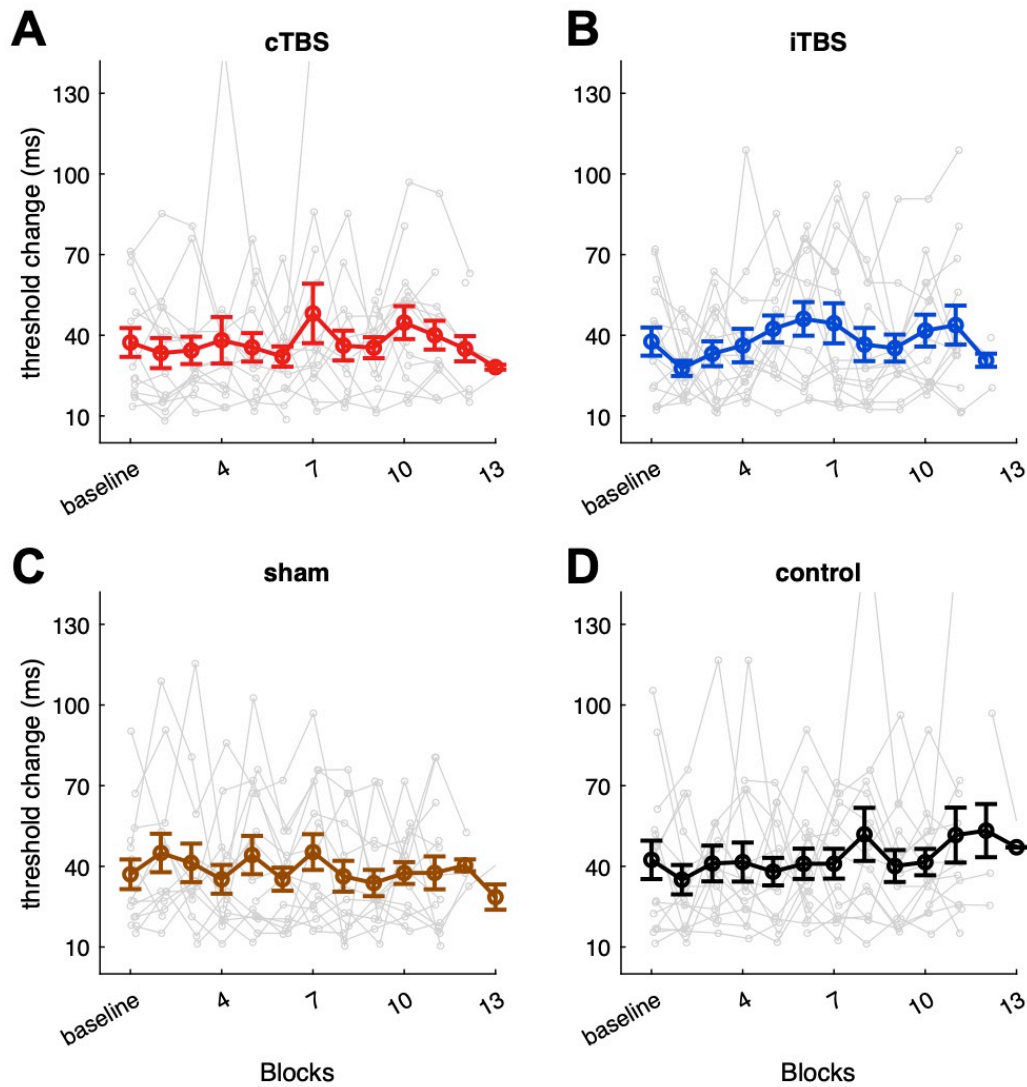


Figure S2: Temporal discrimination thresholds (TDT) for each block before (baseline) and after stimulations are shown for individuals (small dots, thin lines) and group mean data (large dots, thick lines). Error bars show standard error. A: cTBS stimulation, B: iTBS stimulation, C: sham stimulation, D: control session (no TMS stimulation).