

Supplementary Materials

A post-marketing surveillance study of nusinersen for spinal muscular atrophy in routine medical practice in China: interim results

Yuwu Jiang,¹ Yi Wang,² Hui Xiong,^{1,3} Wenhui Li,² Rong Luo,⁴ Wenxiong Chen,⁵ Fei Yin,⁶ Junlan Lü,³ Jianmin Liang,⁷ Wan-Jin Chen,⁸ Xinguo Lu,⁹ Hua Wang,¹⁰ Jihong Tang,¹¹ Michael Monine,¹² Corinne Makepeace,¹³ Xin Jin,^{14*} Richard Foster,¹³ Russell Chin,^{12*} Zdenek Berger¹²

*at the time of development

¹*Peking University First Hospital, Beijing, China*

²*Children's Hospital of Fudan University, Shanghai, China*

³*Beijing Children's Hospital, Capital Medical University, National Center for Children's Health, Beijing, China*

⁴*West China Second University Hospital, Sichuan University, Chengdu, Sichuan, China*

⁵*Guangzhou Women and Children's Medical Center, Guangdong, China*

⁶*Xiangya Hospital of Central South University, Changsha, Hunan, China*

⁷*The First Bethune Hospital of Jilin University, Changchun, Jilin, China*

⁸*The First Affiliated Hospital of Fujian Medical University, Fuzhou, Fujian, China*

⁹*Shenzhen Children's Hospital, Shenzhen, China*

¹⁰*Shengjing Hospital of China Medical University, Shenyang, Liaoning, China*

¹¹*Children's Hospital of Soochow University, Suzhou, Jiangsu, China*

¹²*Biogen, Cambridge, MA, USA*

¹³*Biogen, Maidenhead, Berkshire, UK*

¹⁴*Cytel, Cambridge, MA, USA*

Corresponding author:

Zdenek Berger, PhD

Biogen, 225 Binney St,

Cambridge, MA 02142, USA

Zdenek.berger@biogen.com

Figure S1. Participant disposition

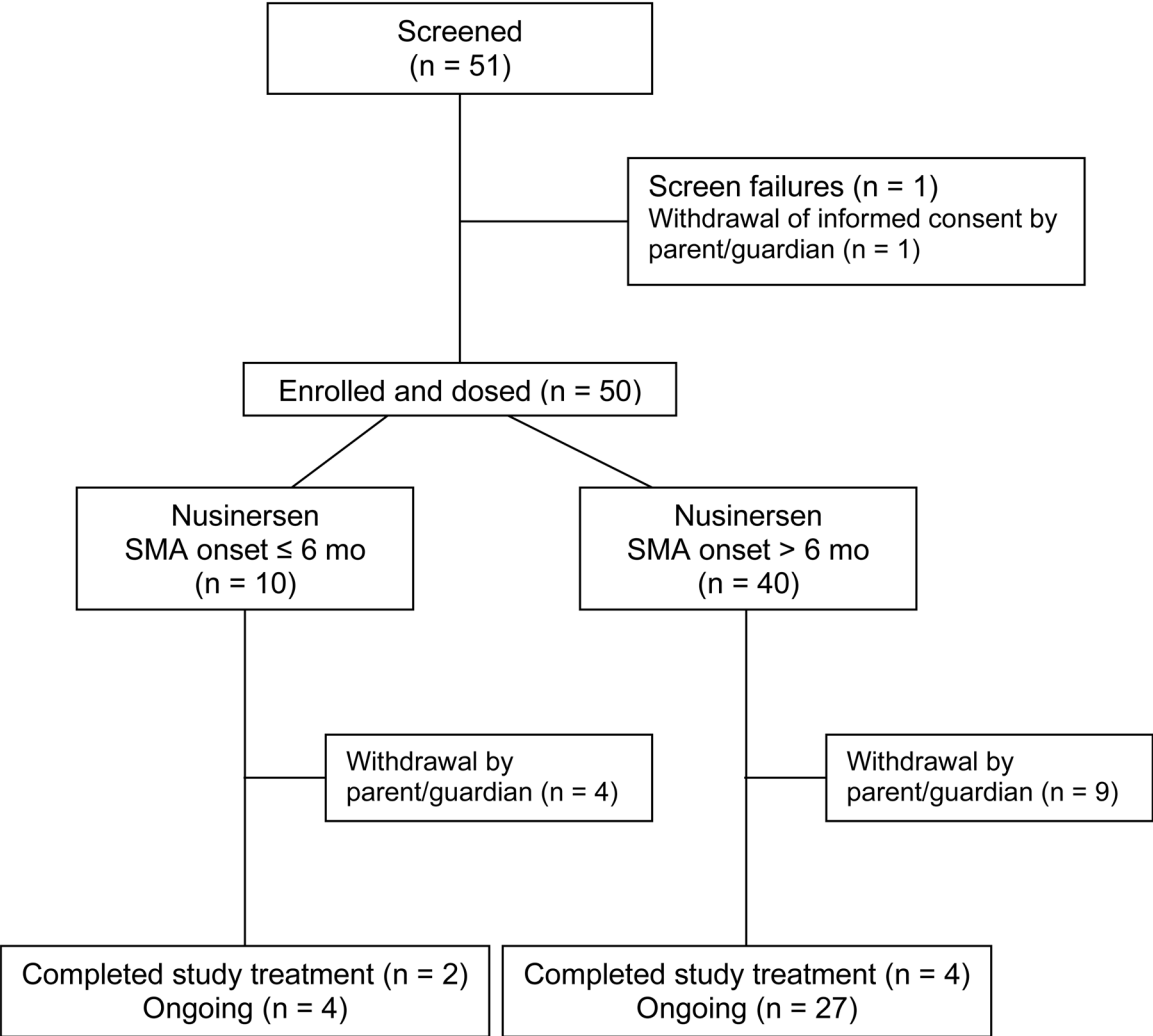
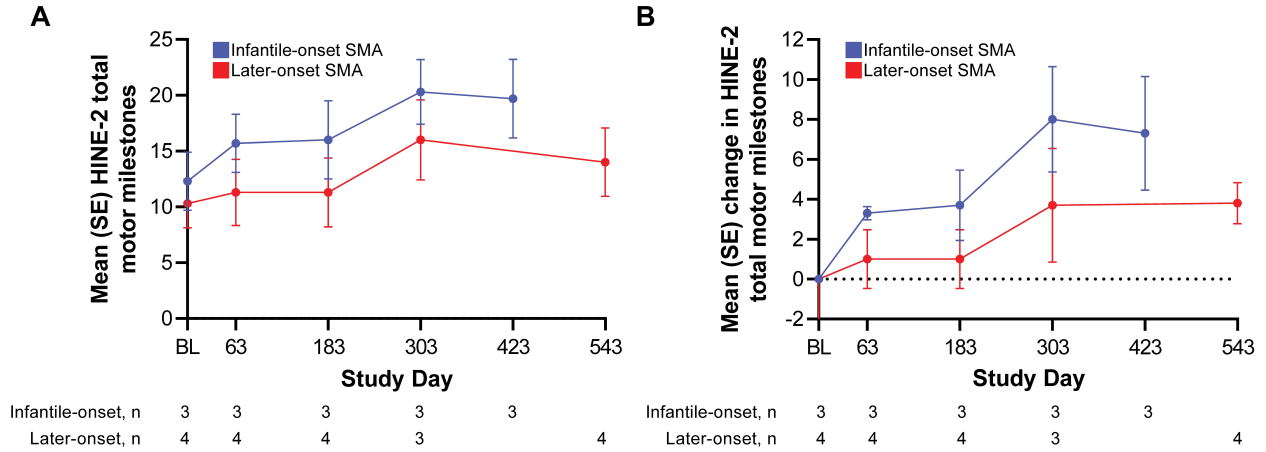
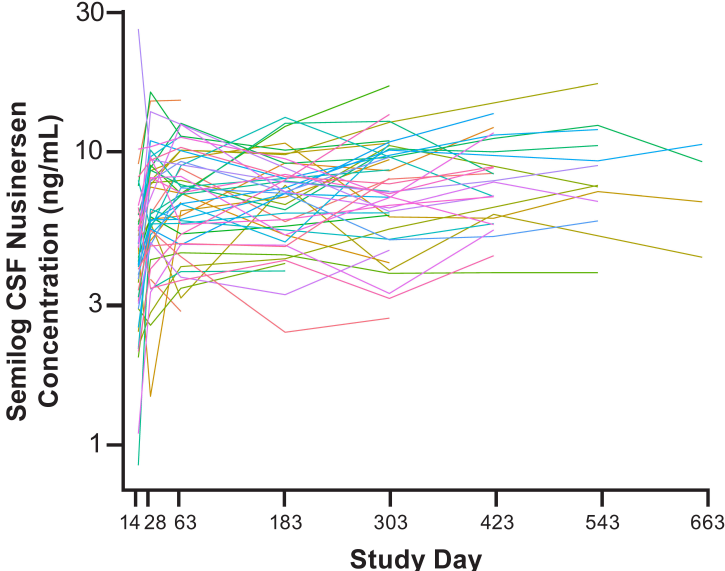


Figure S2. Gradual improvement was observed in mean (SD) HINE Section 2 total motor milestone scores of participants with full study data, **A)** total motor milestone score and **B)** change from baseline over time



BL baseline, *HINE* Hammersmith Infant Neurological Examination, *SMA* spinal muscular atrophy

Figure S3. Individual time-dependent CSF trough concentrations of nusinersen at planned study day visits for overall participants (n = 50)



CSF cerebrospinal fluid