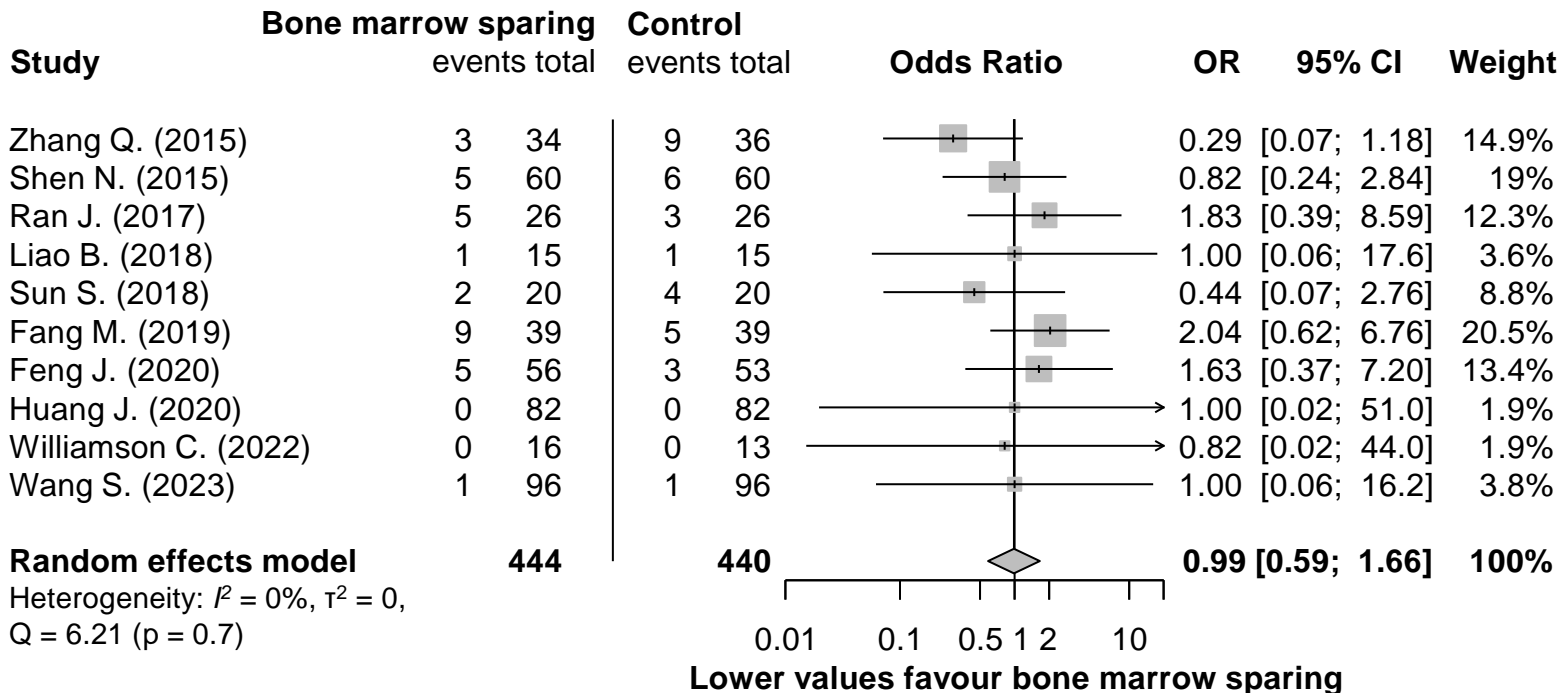
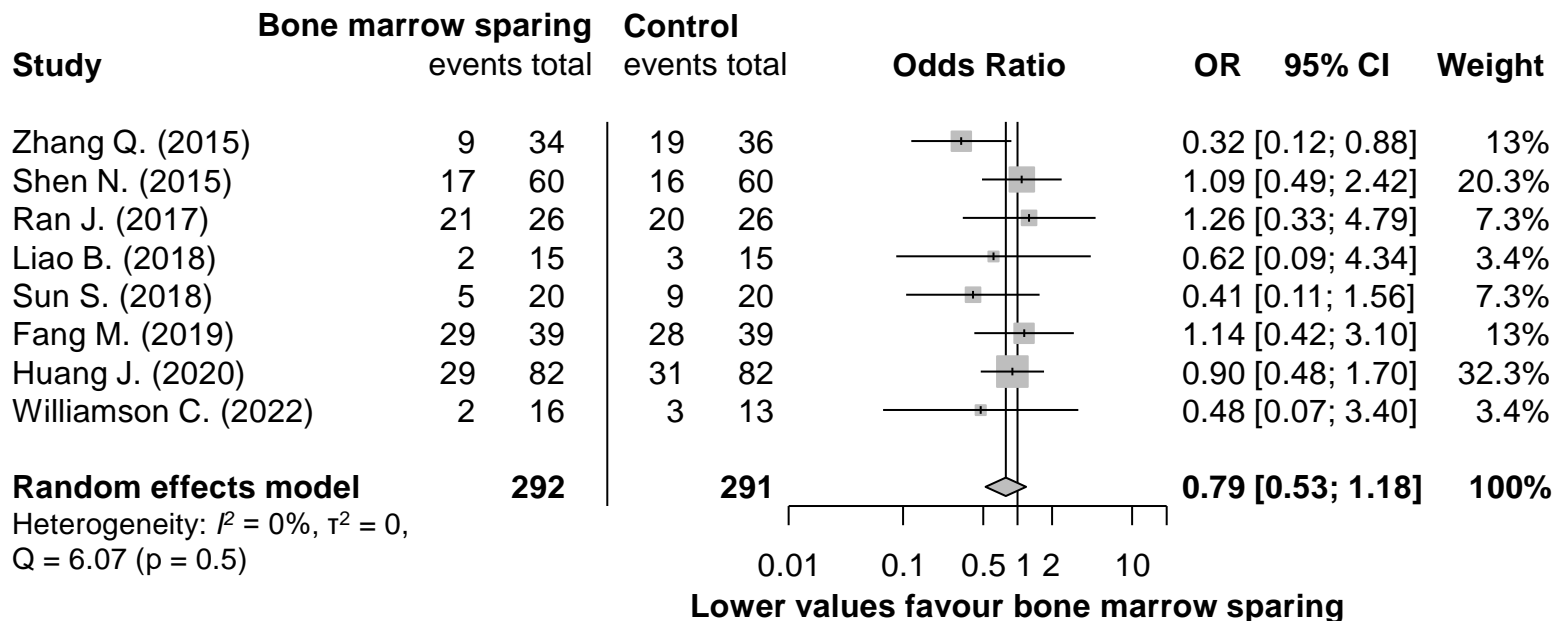


Incidence of G \geq 3 gastrointestinal toxicity

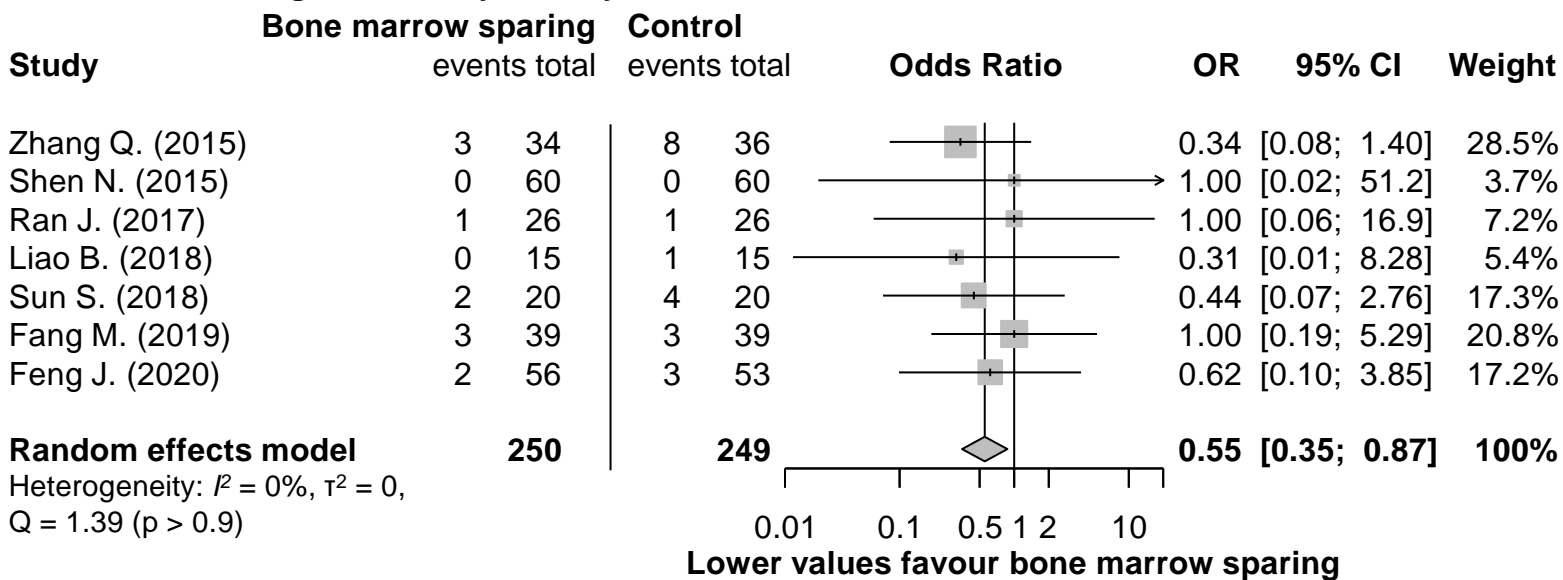


Heterogeneity: $I^2 = 0\%$, $\tau^2 = 0$,
 $Q = 6.21$ ($p = 0.7$)

Incidence of G ≥ 2 gastrointestinal toxicity



Incidence of G \geq 3 genitourinary toxicity



Incidence of G ≥ 2 genitourinary toxicity

