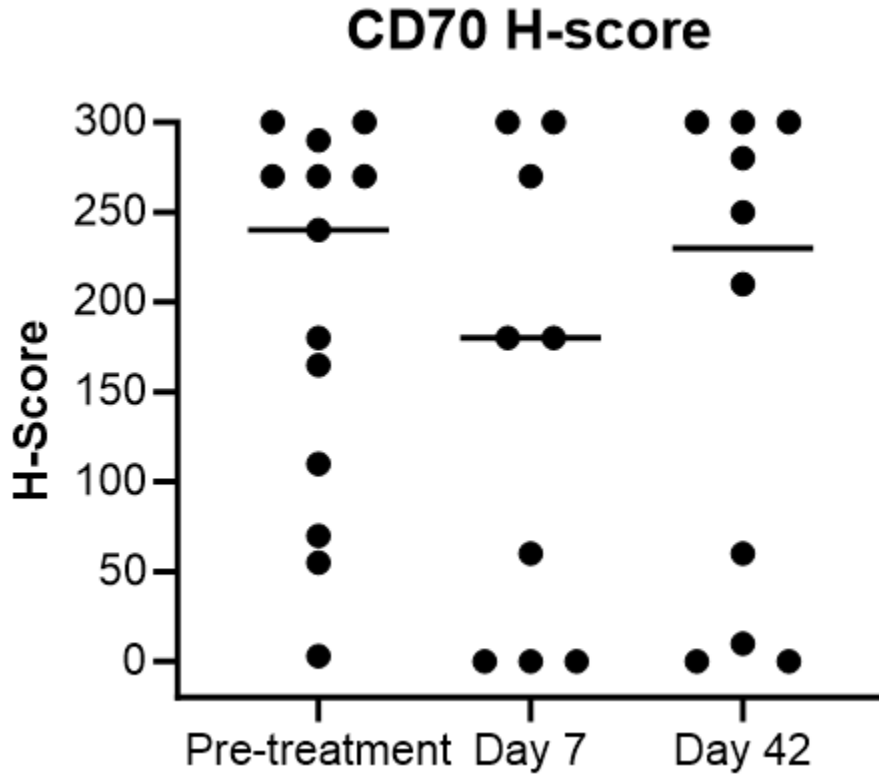


Supplementary Fig. S1



Supplementary Fig. S1. Tumor biopsy CD70 H-scores. The H-score is a semi-quantitative value calculated based on the intensity of staining (scored from 0 for “no signal” to 3+ for “strong signal”) and the percentage of cells stained at each intensity. $H\text{-score} = (1 \times [\text{percentage of cells stained at “1+”}]) + (2 \times [\text{percentage of cells stained at “2+”}]) + (3 \times [\text{percentage of cells stained at “3+”}])$. The graph shows CD70 H-score data from tumor cells pre-treatment (n=13), Day 7 after infusion (n=9), and Day 42 after infusion (n=10). Each point represents a tumor biopsy sample from 1 patient, and bars represent median values.