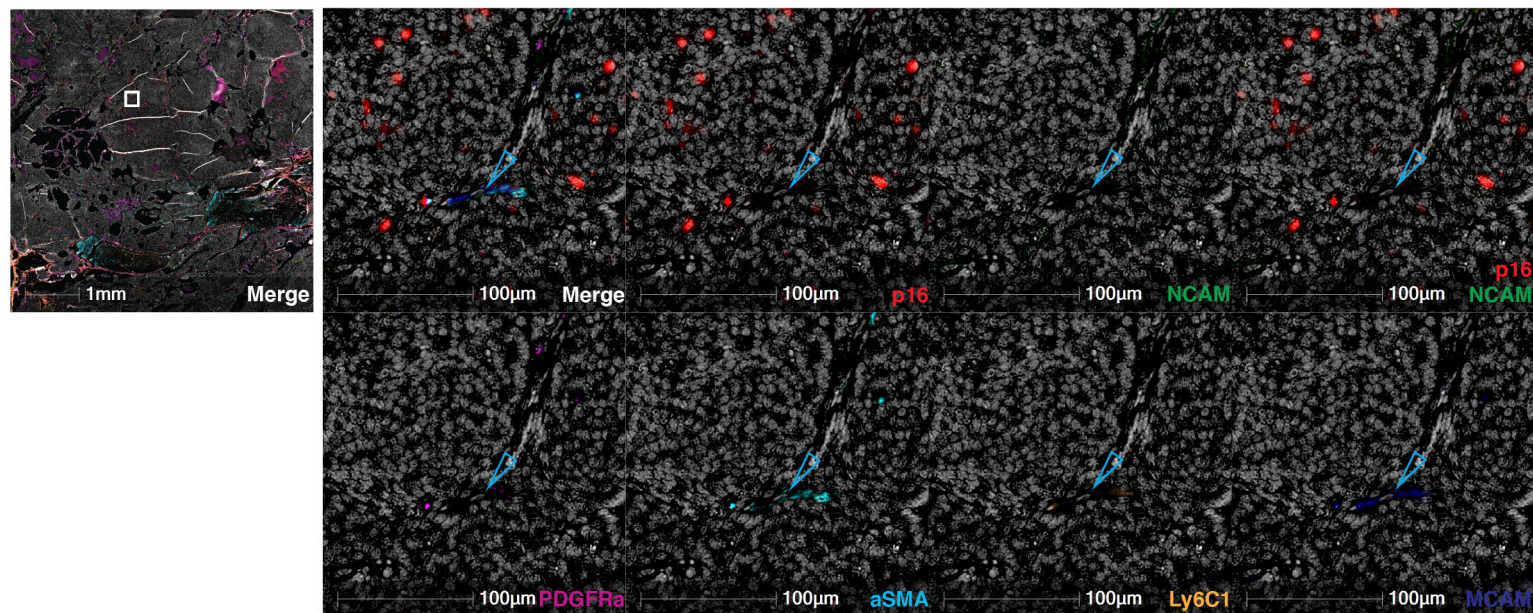
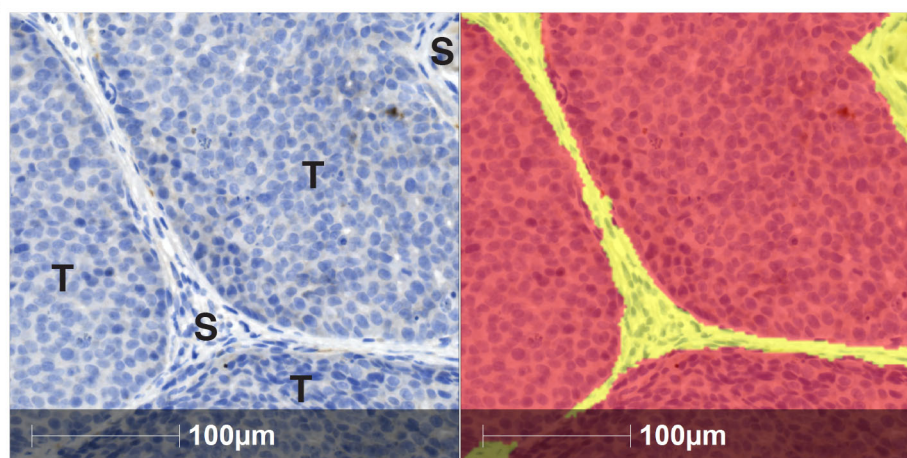


**A****B**

**Supplemental Figure 3. MMTV-PyMT tumors contain a heterogeneous mixture of stromal cells.** (A) Multiplex immunohistochemical (mIHC) analyses were performed on 10 weeks old MMTV-PyMT tumors using p16 (red), NCAM (green), PDGFR $\alpha$  (magenta), alpha-smooth muscle active (aSMA, cyan), Ly6C1 (orange), and MCAM (blue) specific antibodies and nuclei were counterstained with hematoxylin and shown as white (left: 1x; right: 25x). Individual stains were pseudo colored as indicated and then merged (first panel). vCAF was denoted with a hollow blue arrowhead. Notice that this panel shares 1x magnification view with **Fig. 4A**. This representative image was captured from the staining of the same piece of tissue section as shown in **Fig. 4A**. (B) Representative masking of tumor (red) versus stroma (yellow) regions identified by HALO computational pathology software. “T” indicates tumor areas and “S” indicates stromal areas.