

Original blot images:

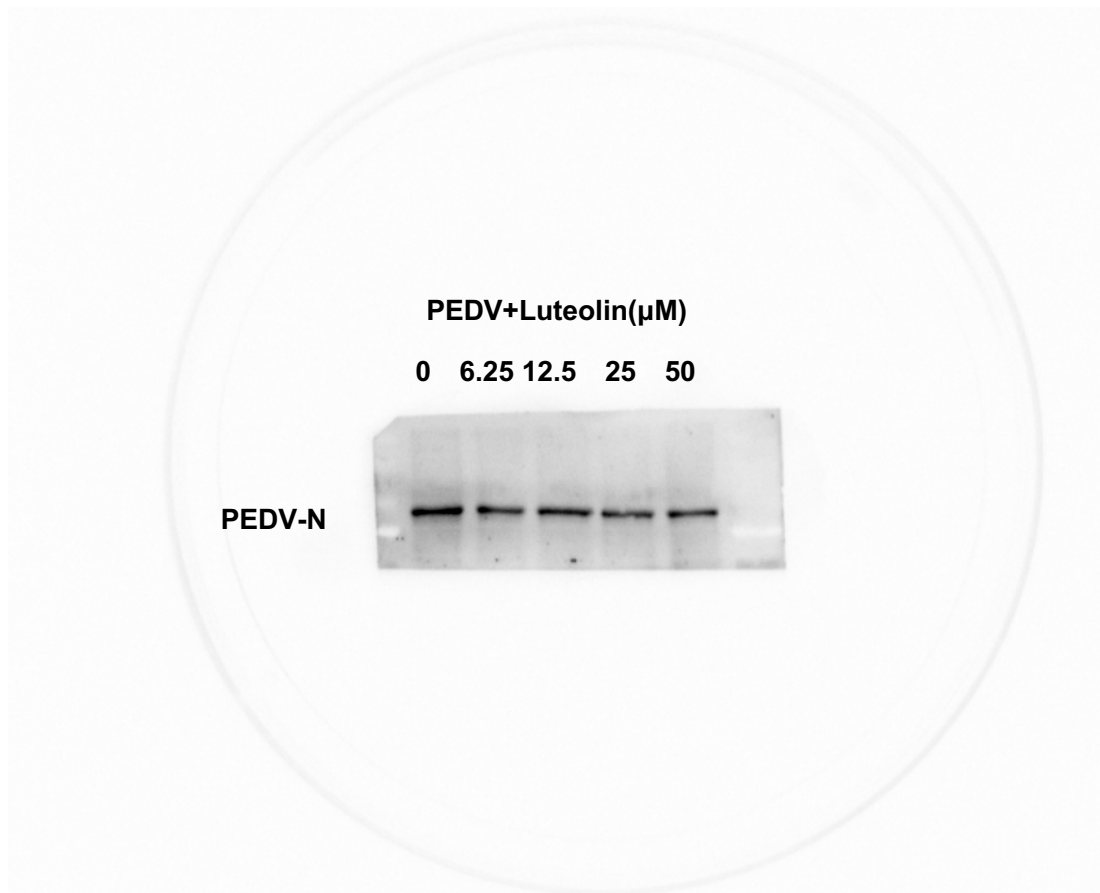


Figure 1: The expression of PEDV-N protein in Vero cells infected with PEDV and cultured with different concentrations luteolin (0, 6.25, 12.5, 25 and 50μM) by using western blot assay.

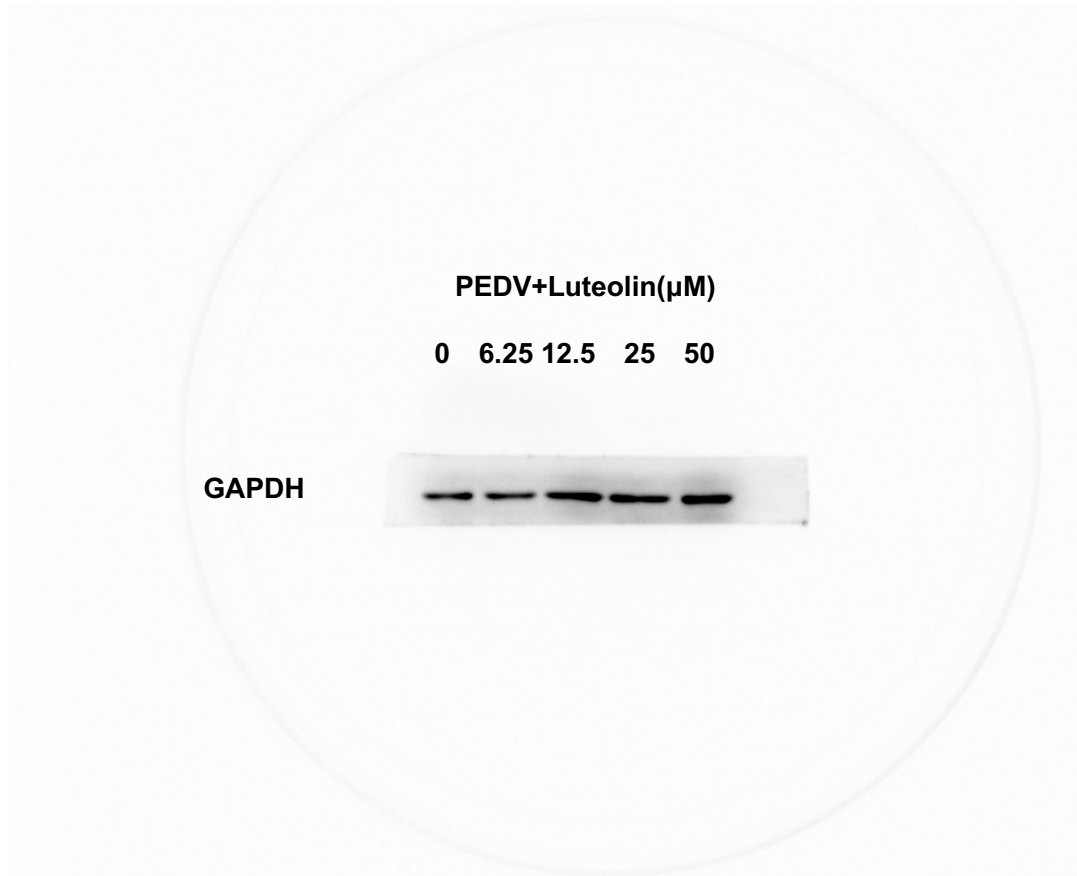


Figure 2: The expression of GAPDH protein in Vero cells infected with PEDV and cultured with different concentrations luteolin (0, 6.25, 12.5, 25 and 50 μM) by using western blot assay.