

Figure 2G

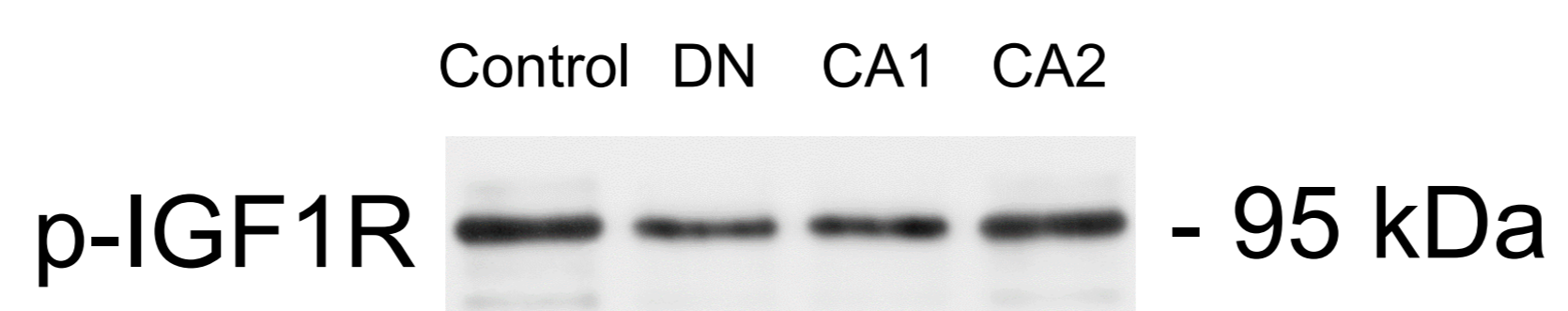
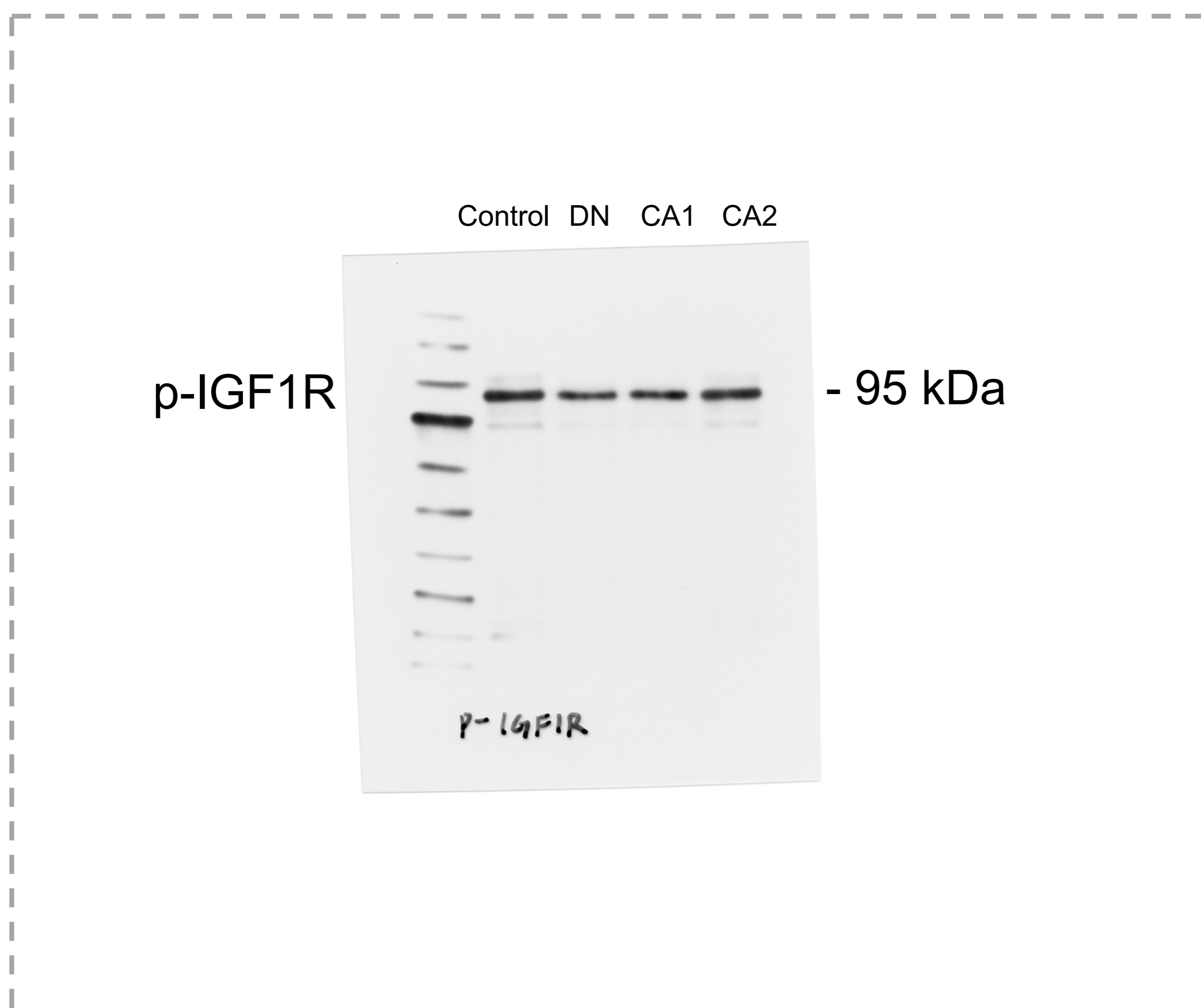
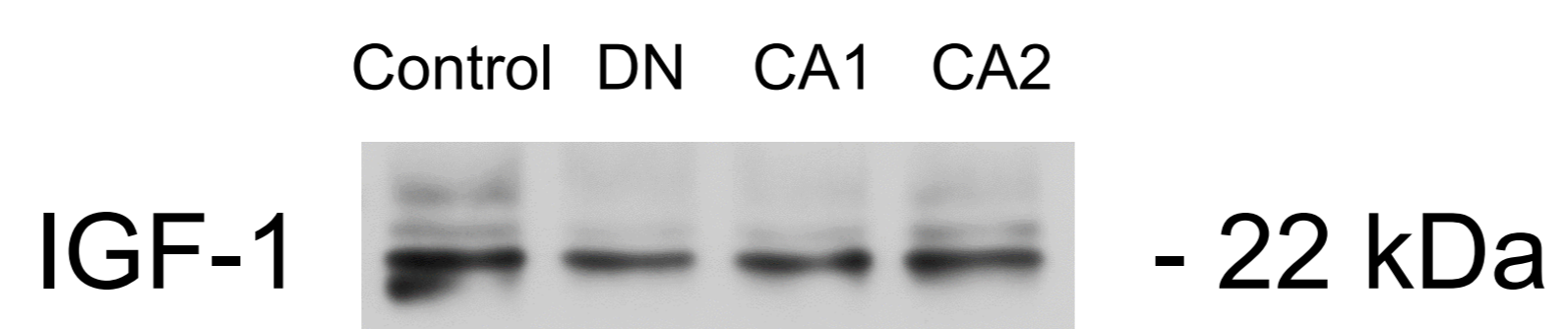
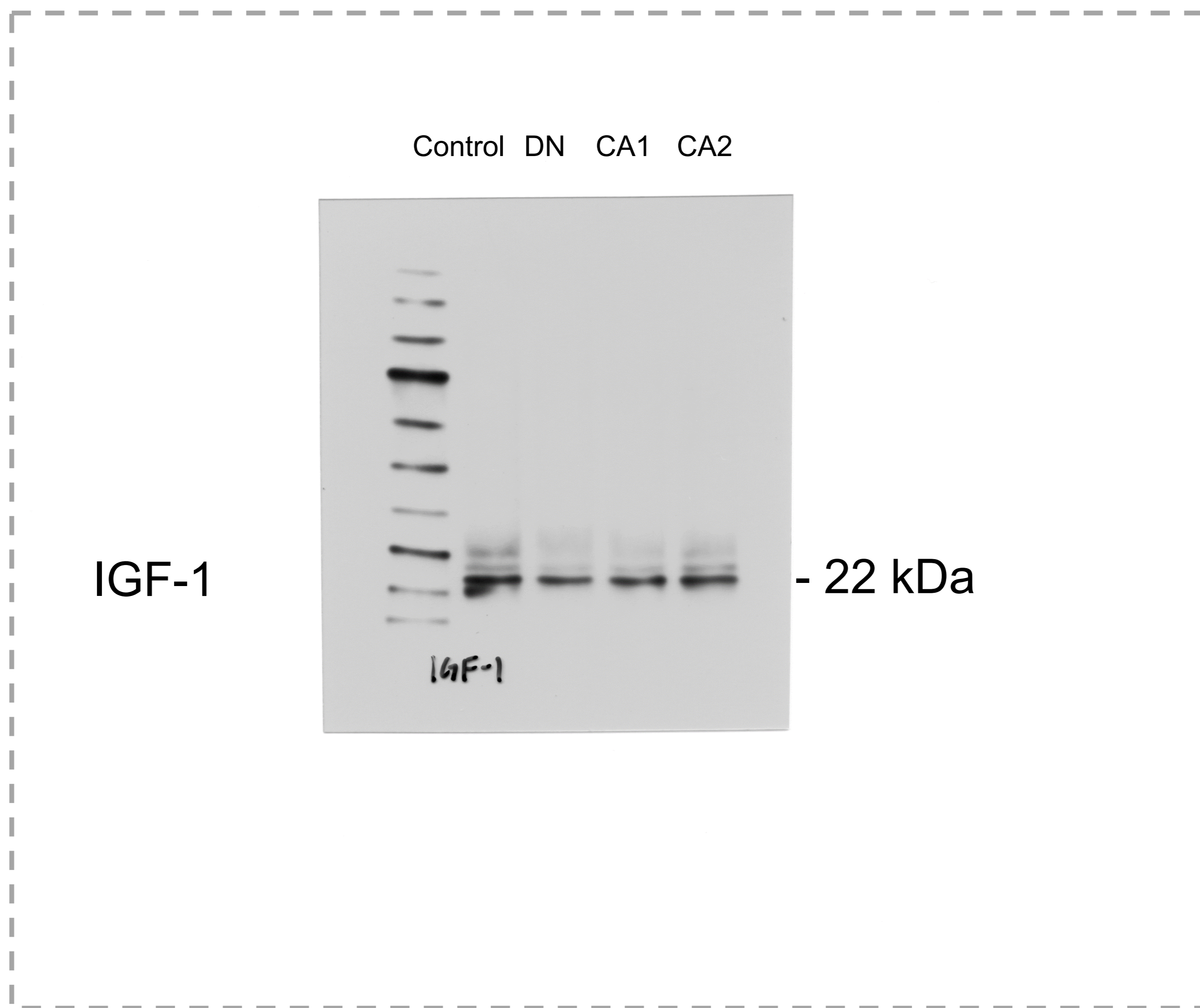


Figure 2G

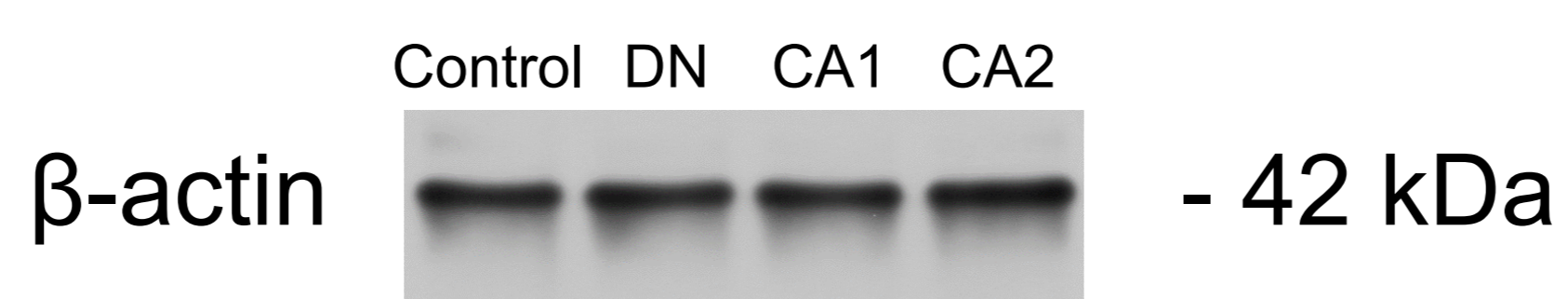
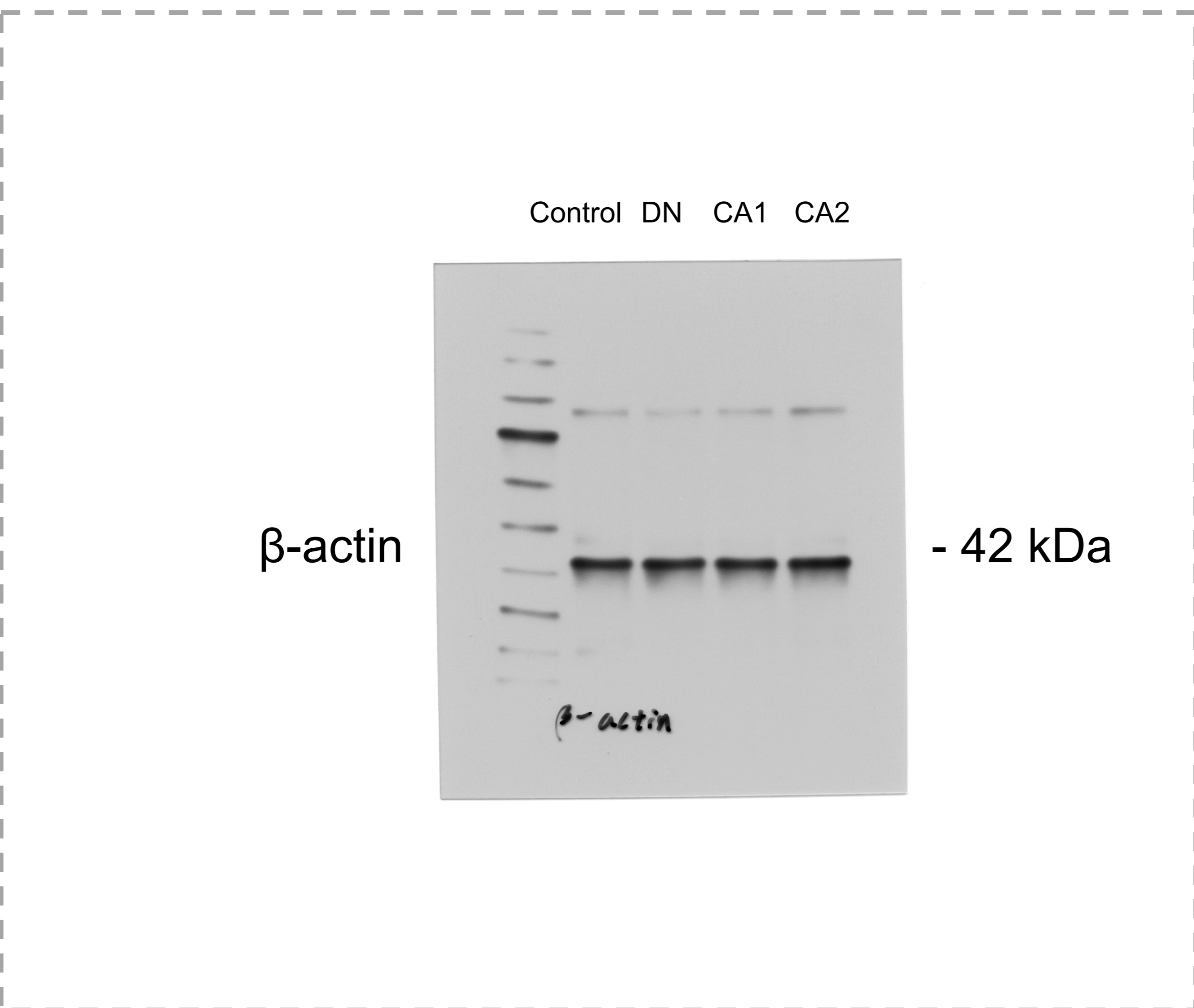
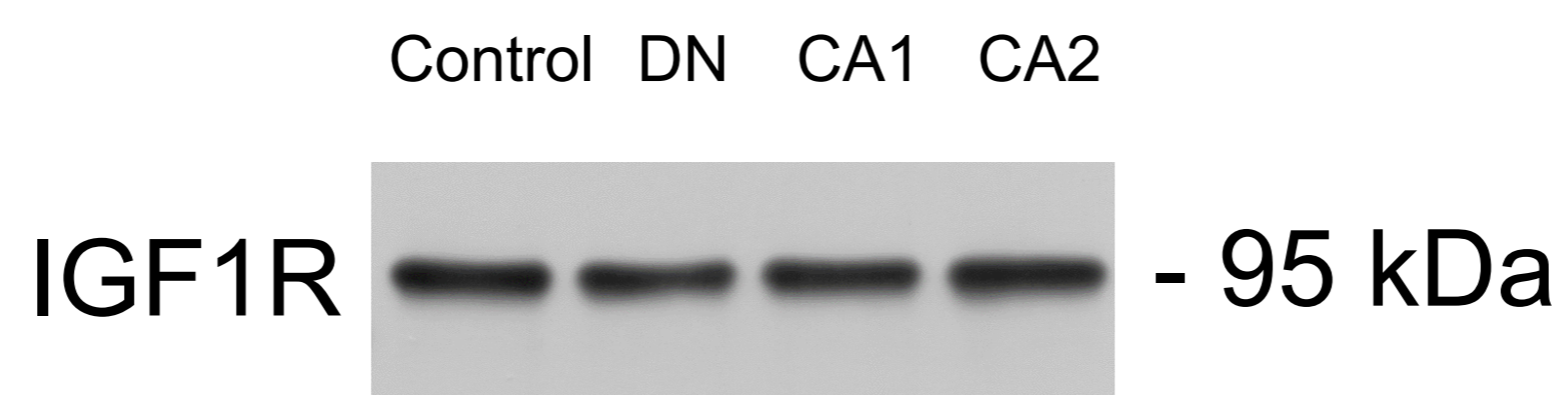
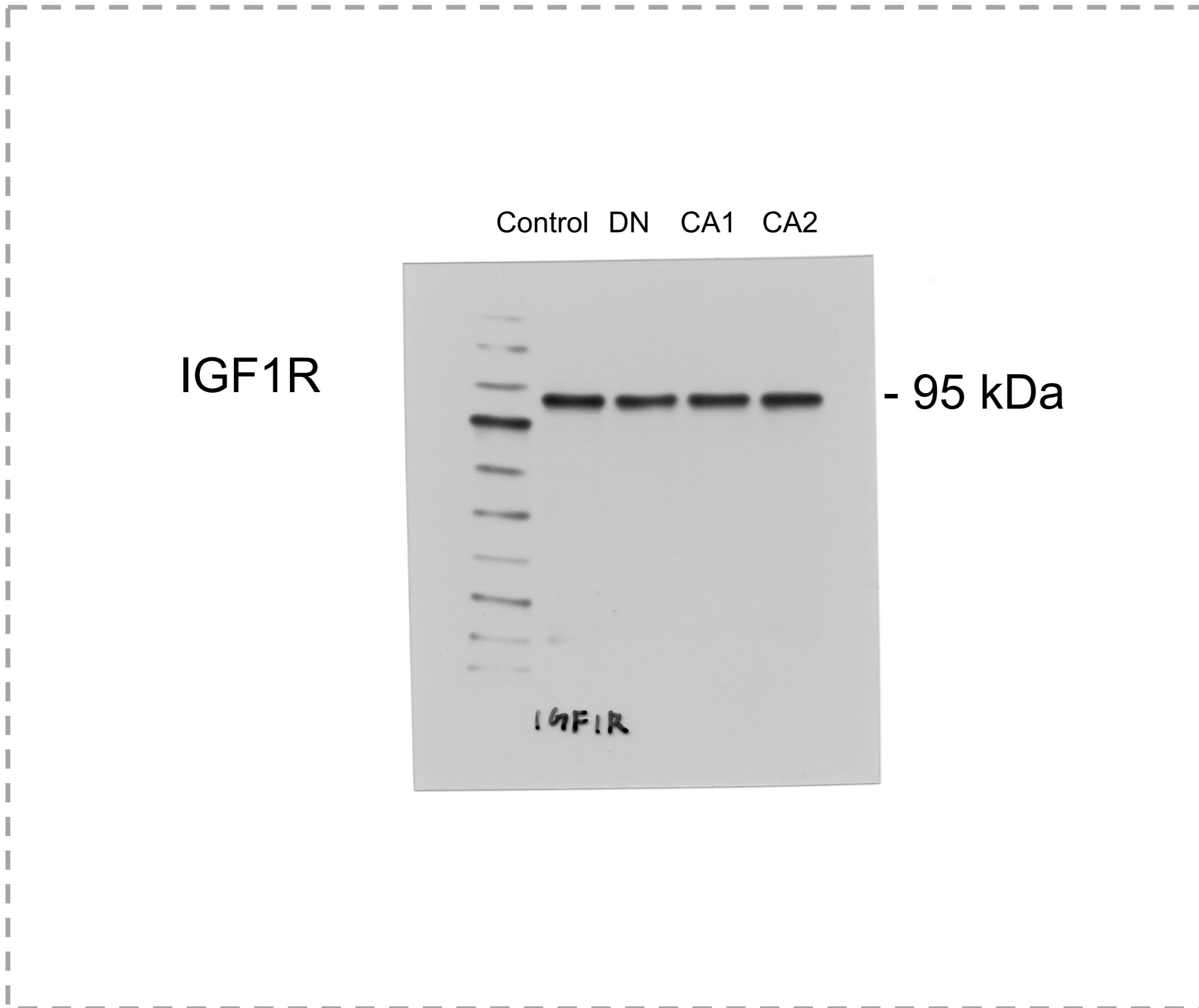


Figure 3D

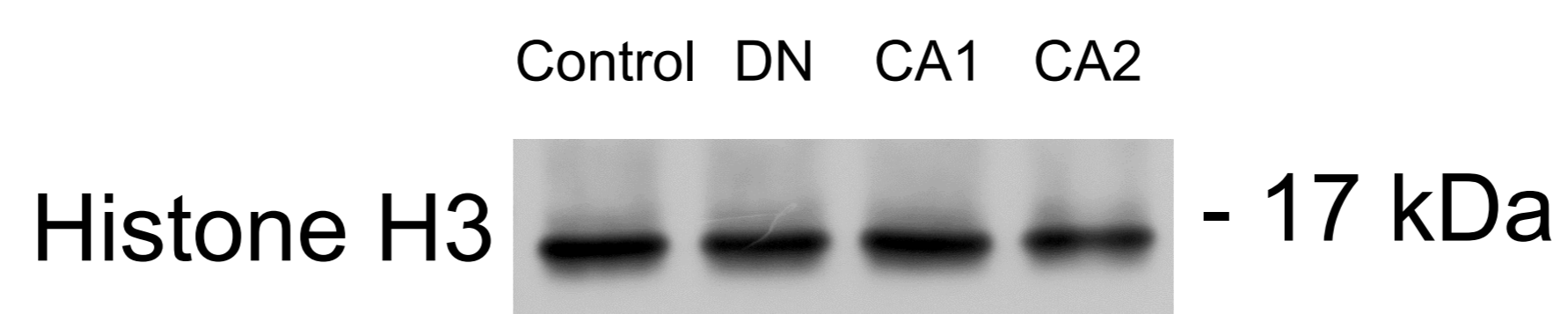
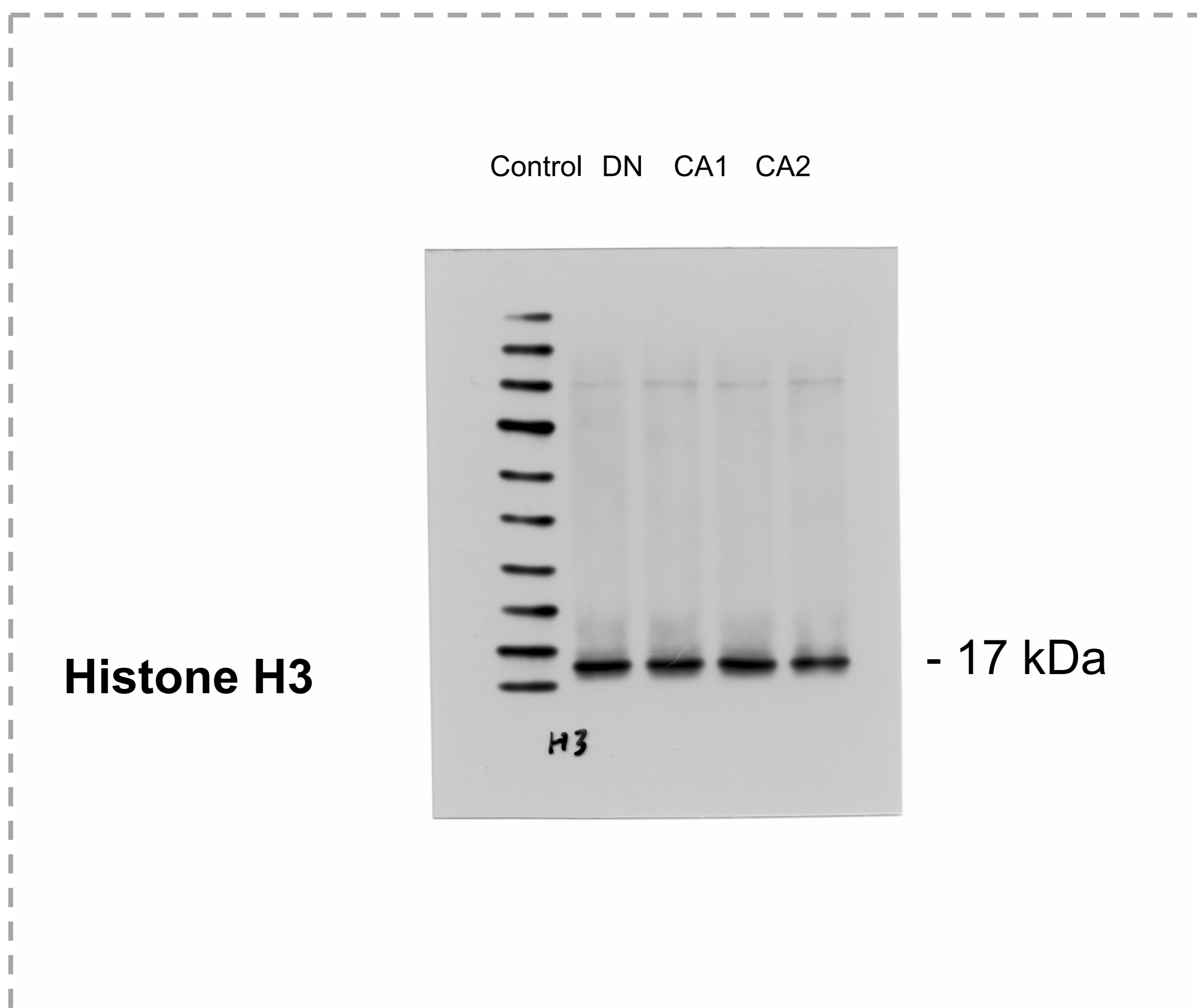
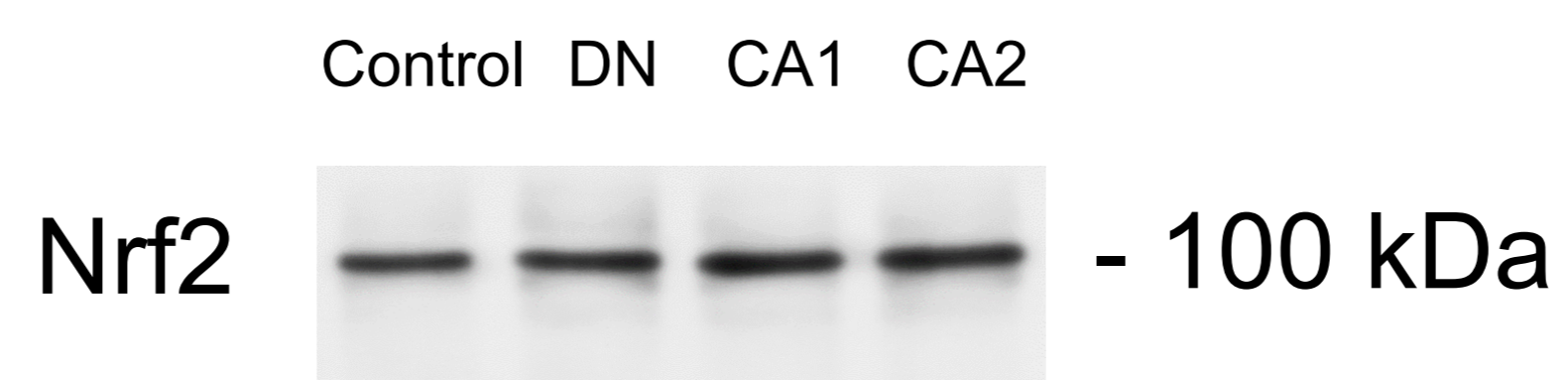
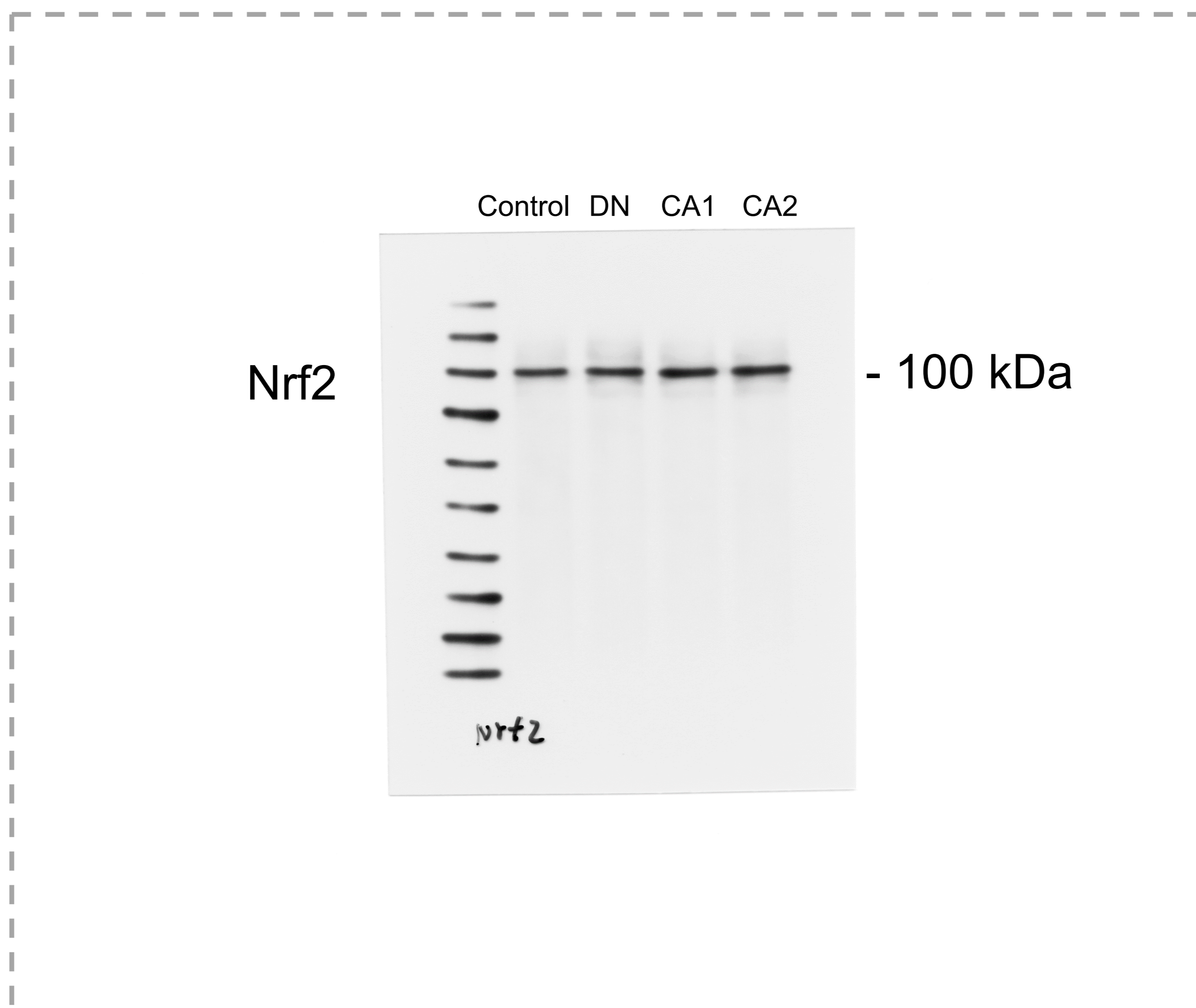


Figure 4E

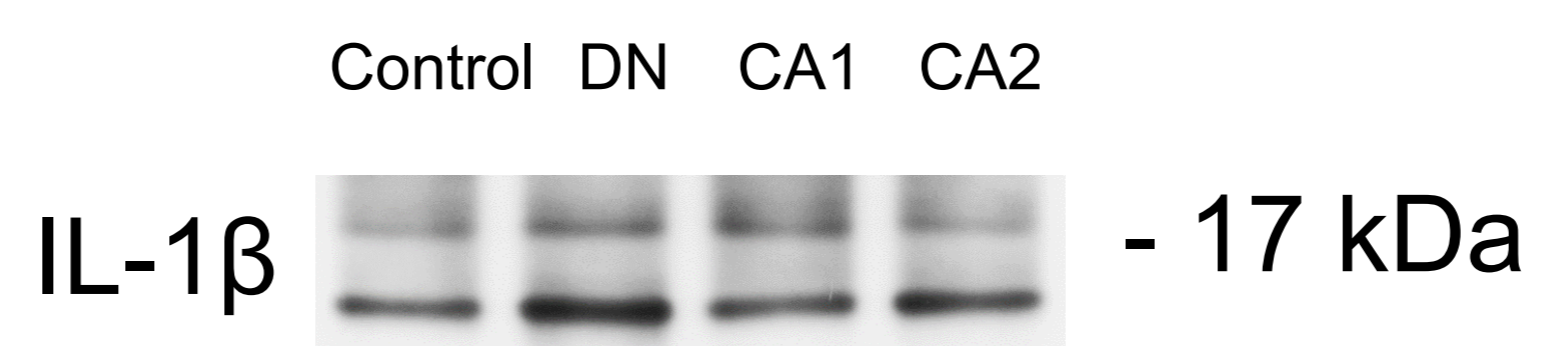
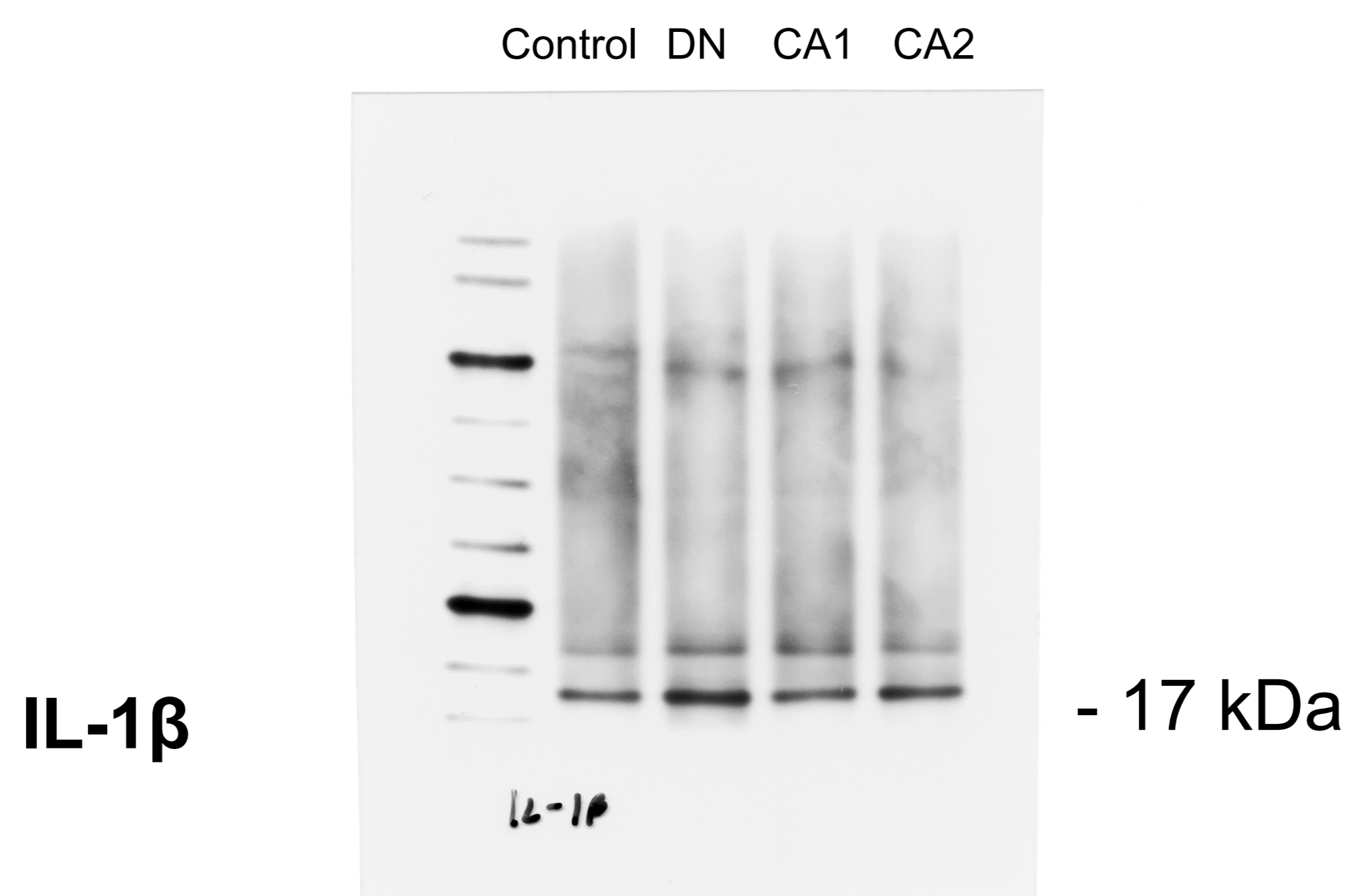
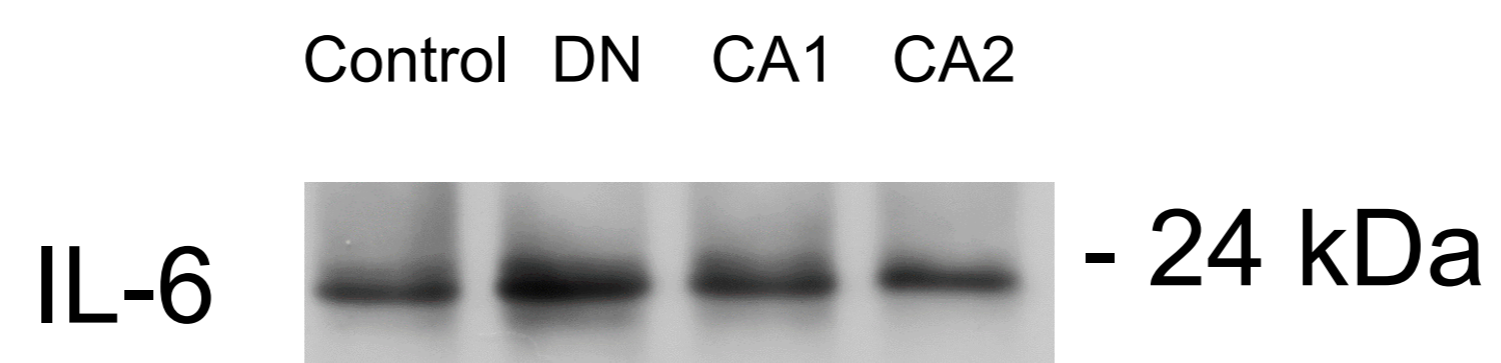
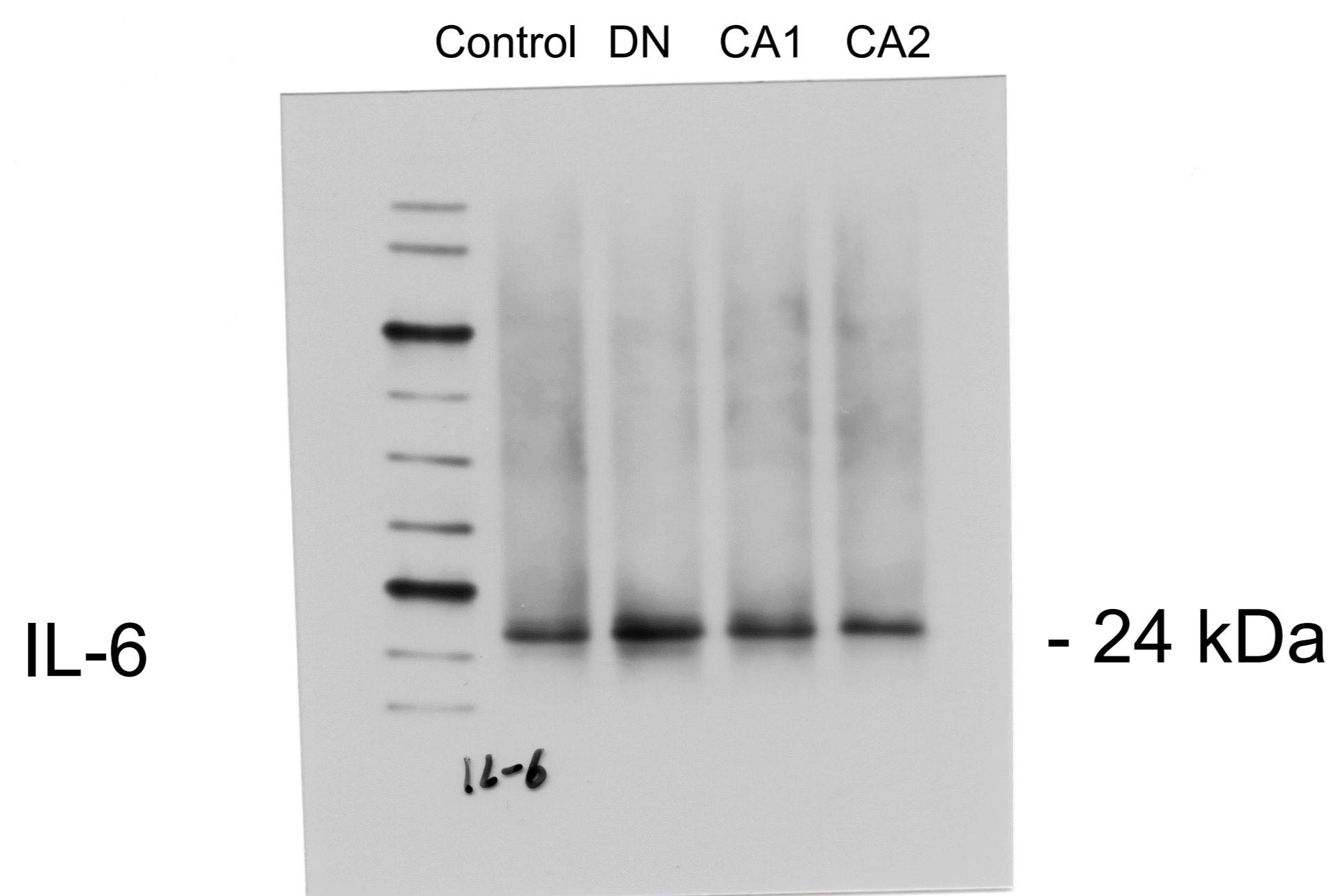


Figure 4E

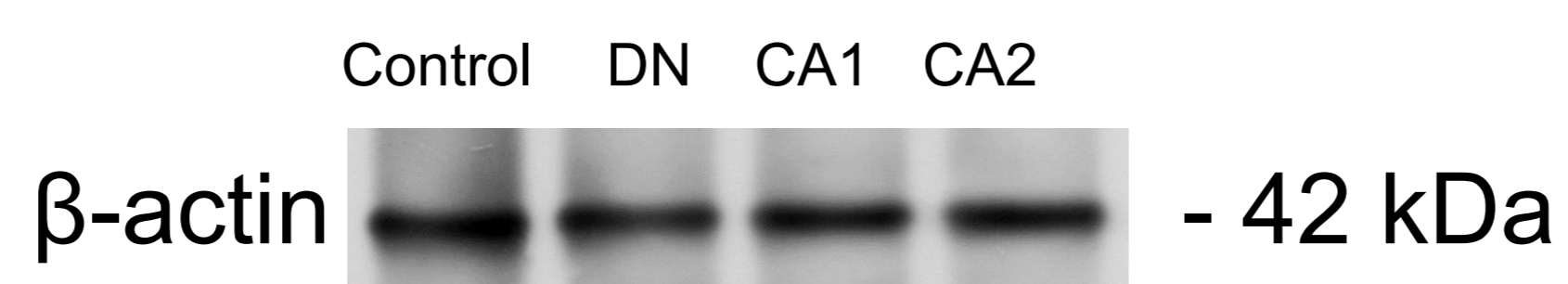
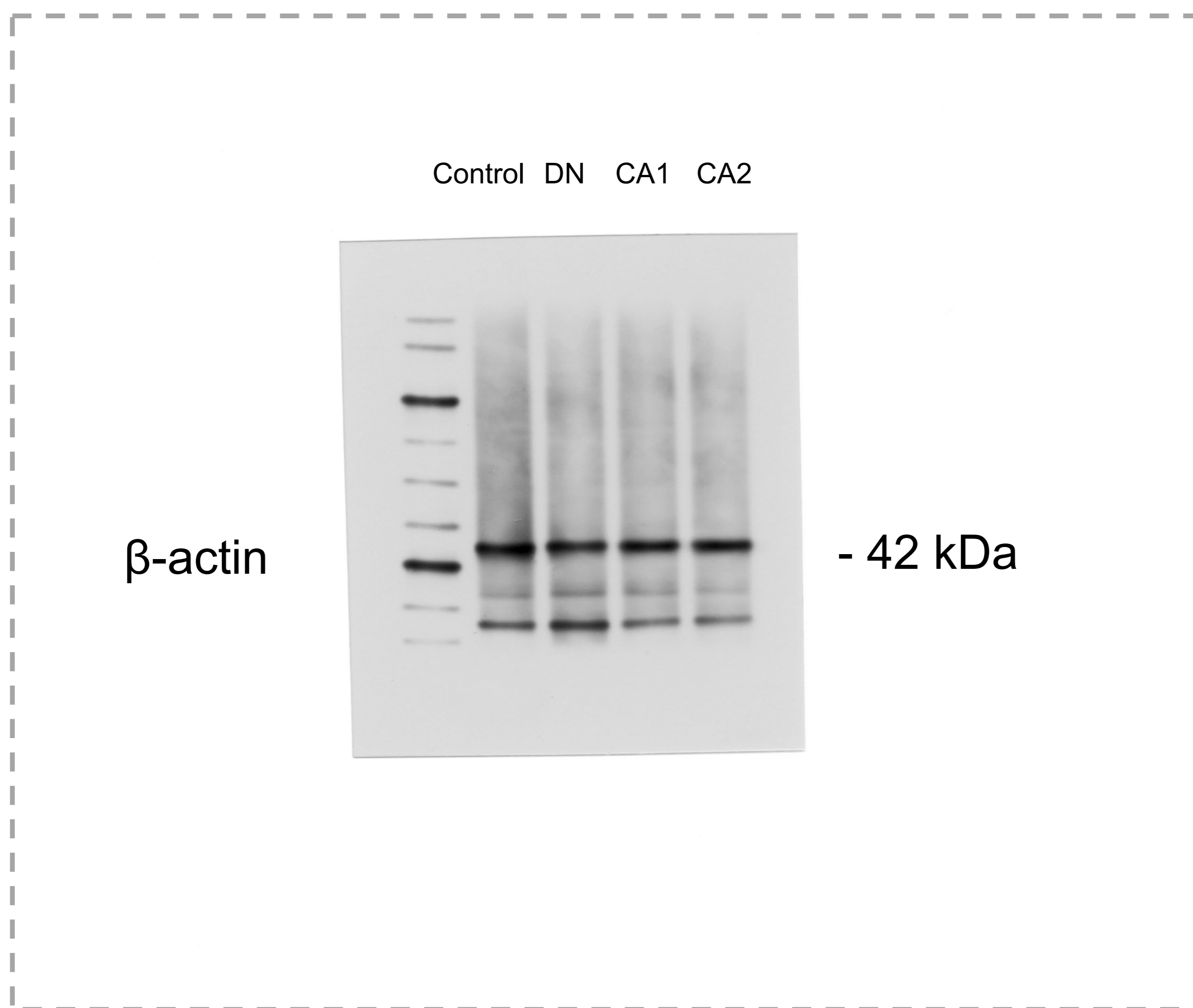


Figure 5D

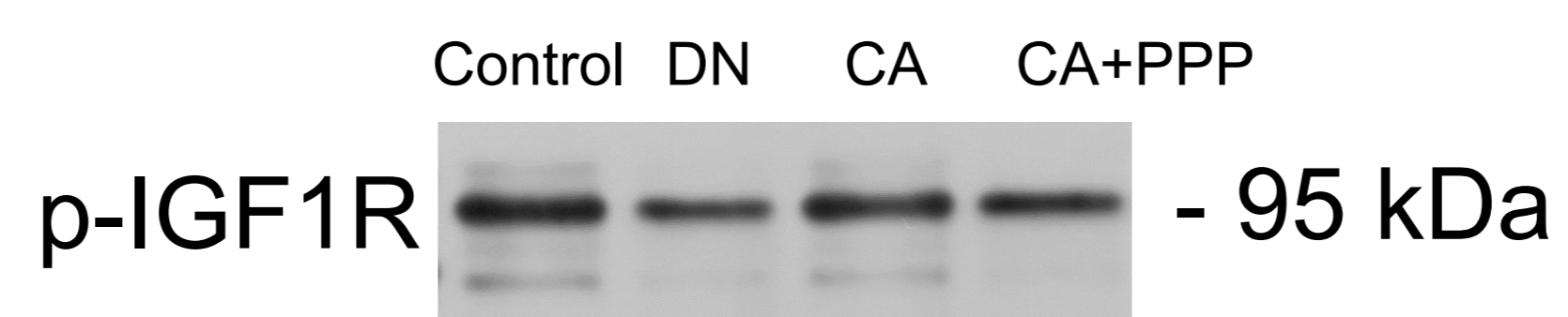
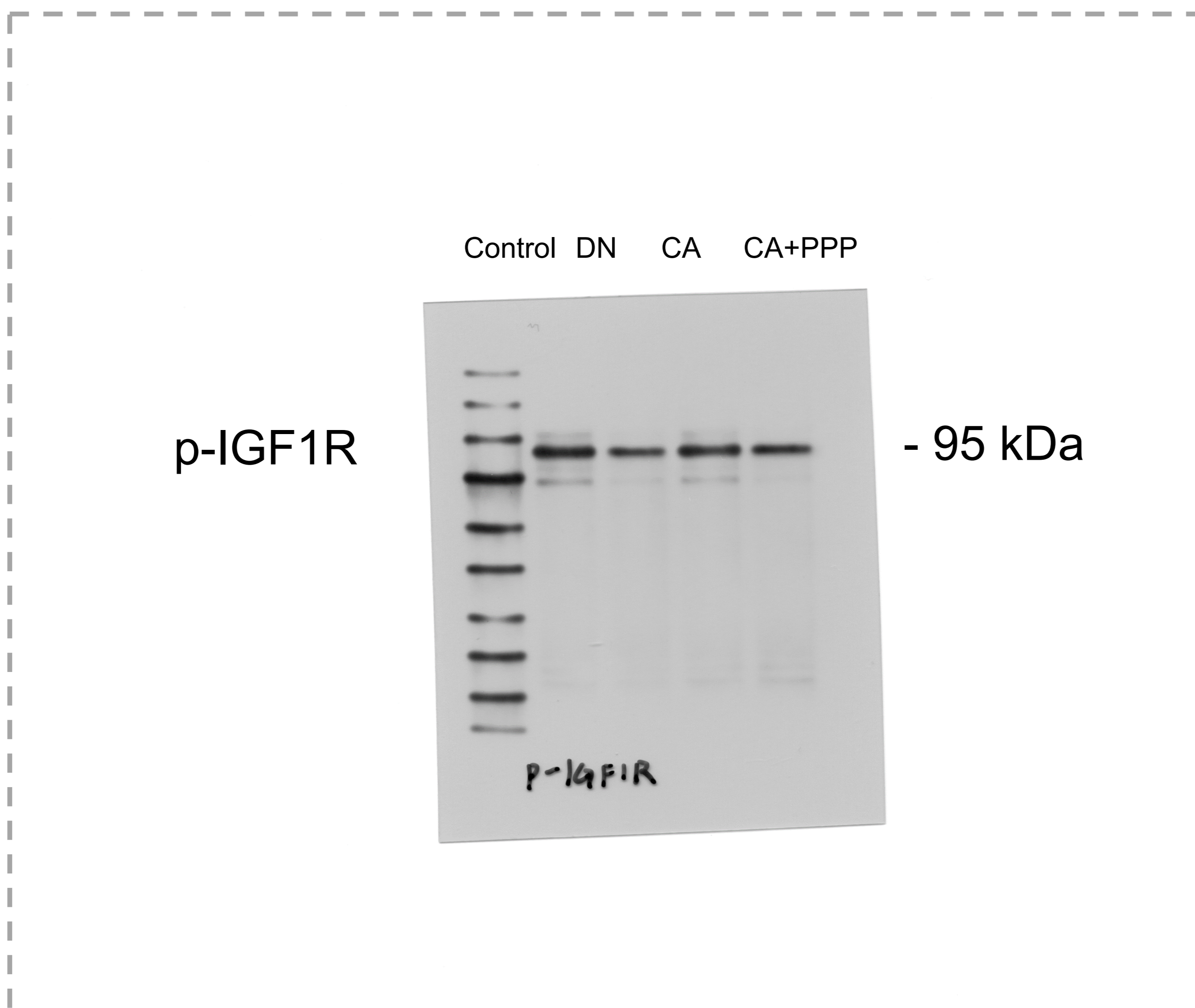
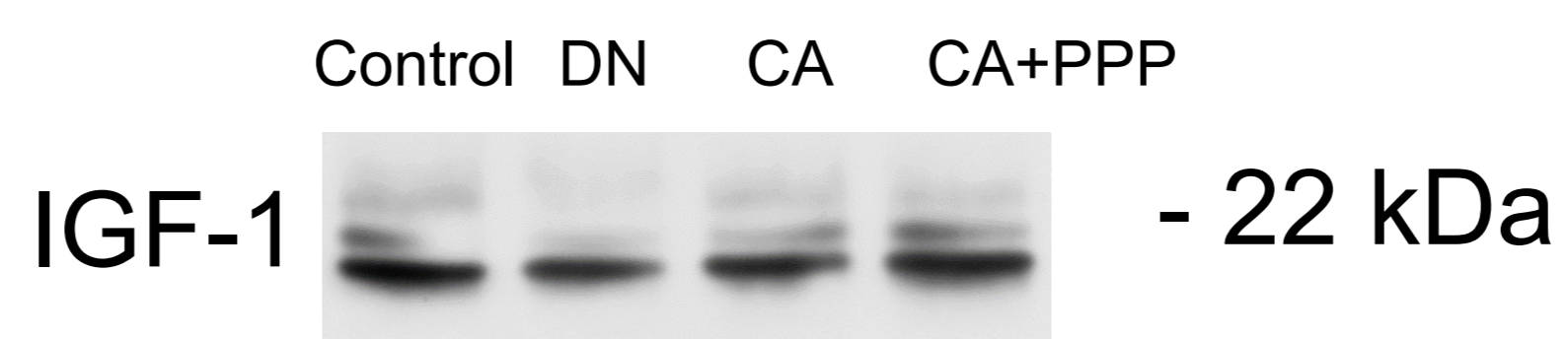
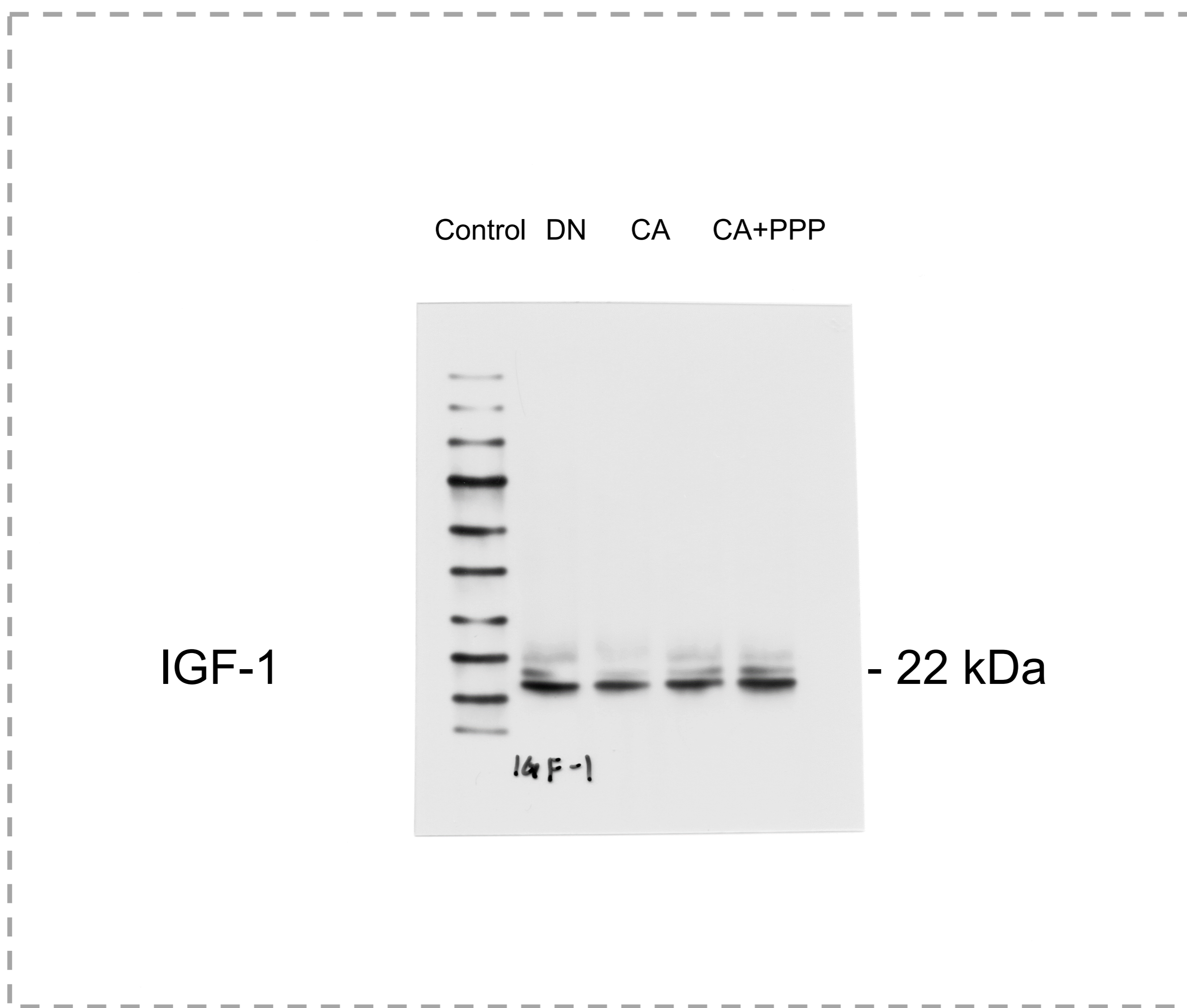


Figure 5D

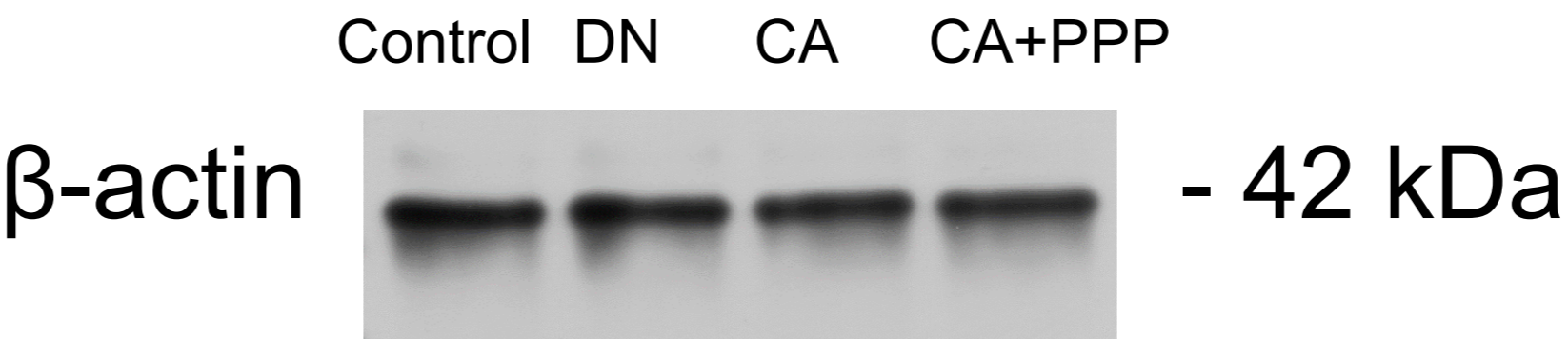
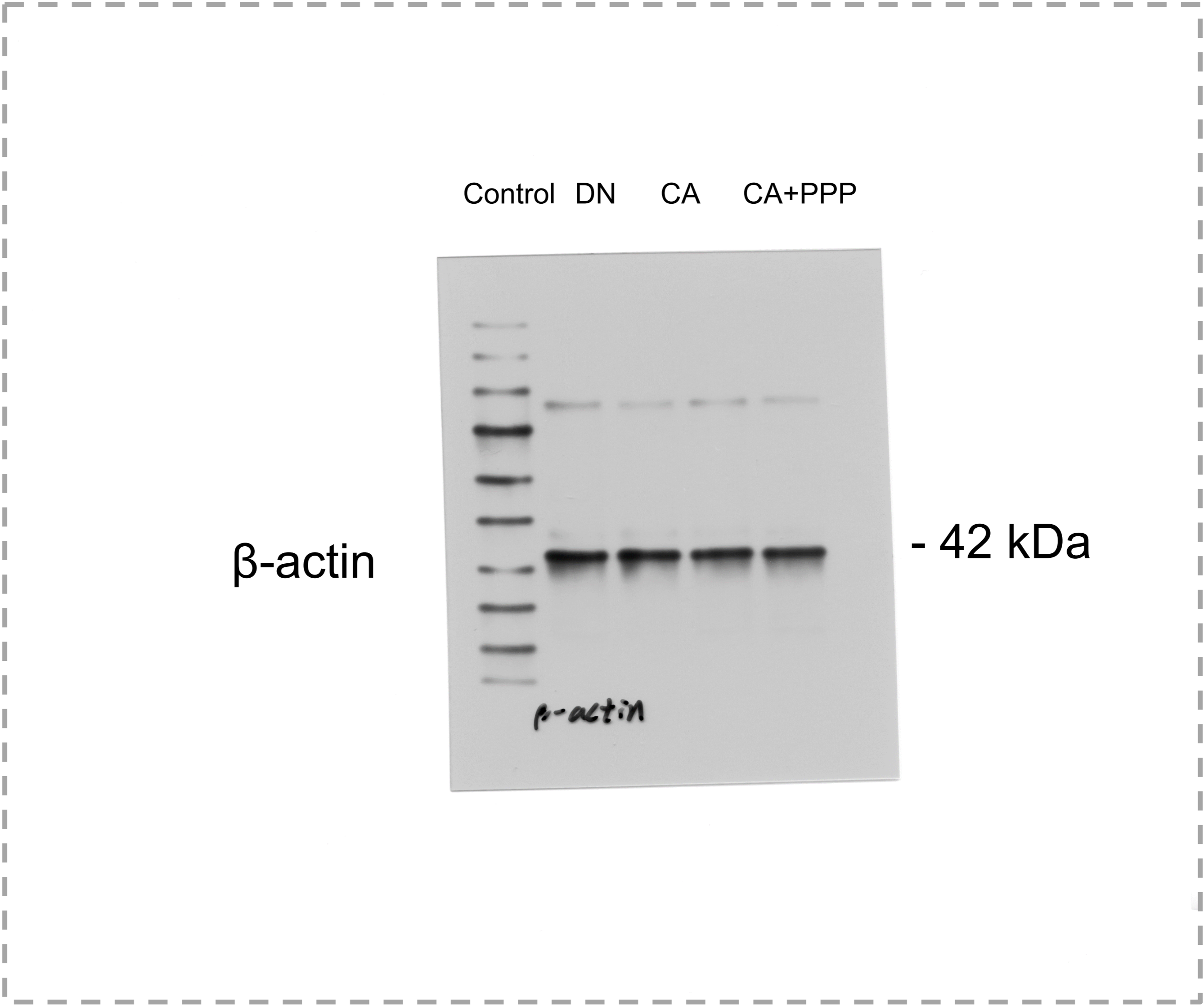
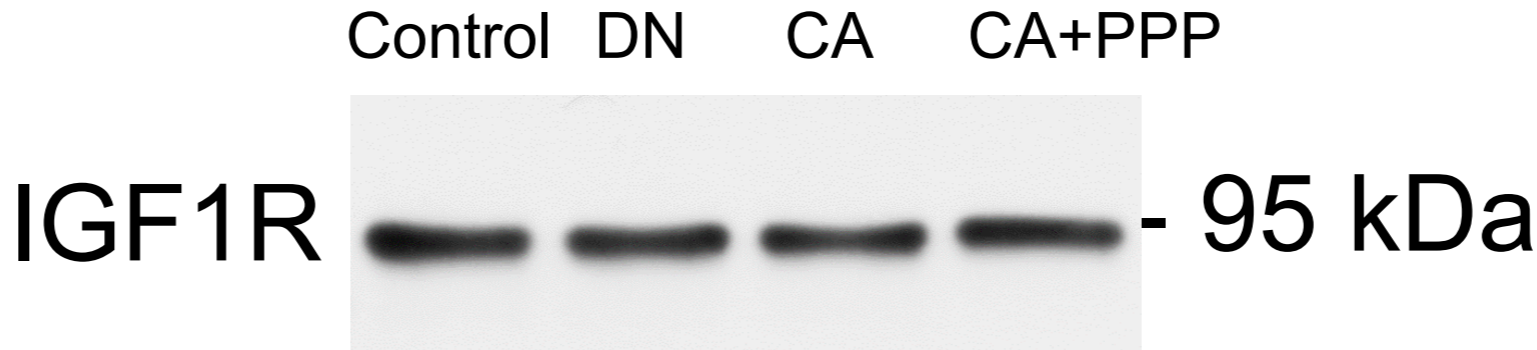


Figure 6D

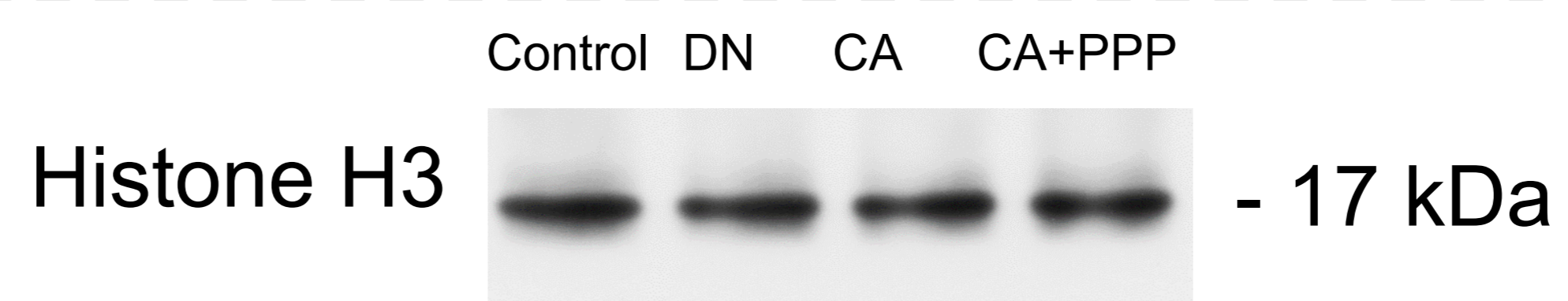
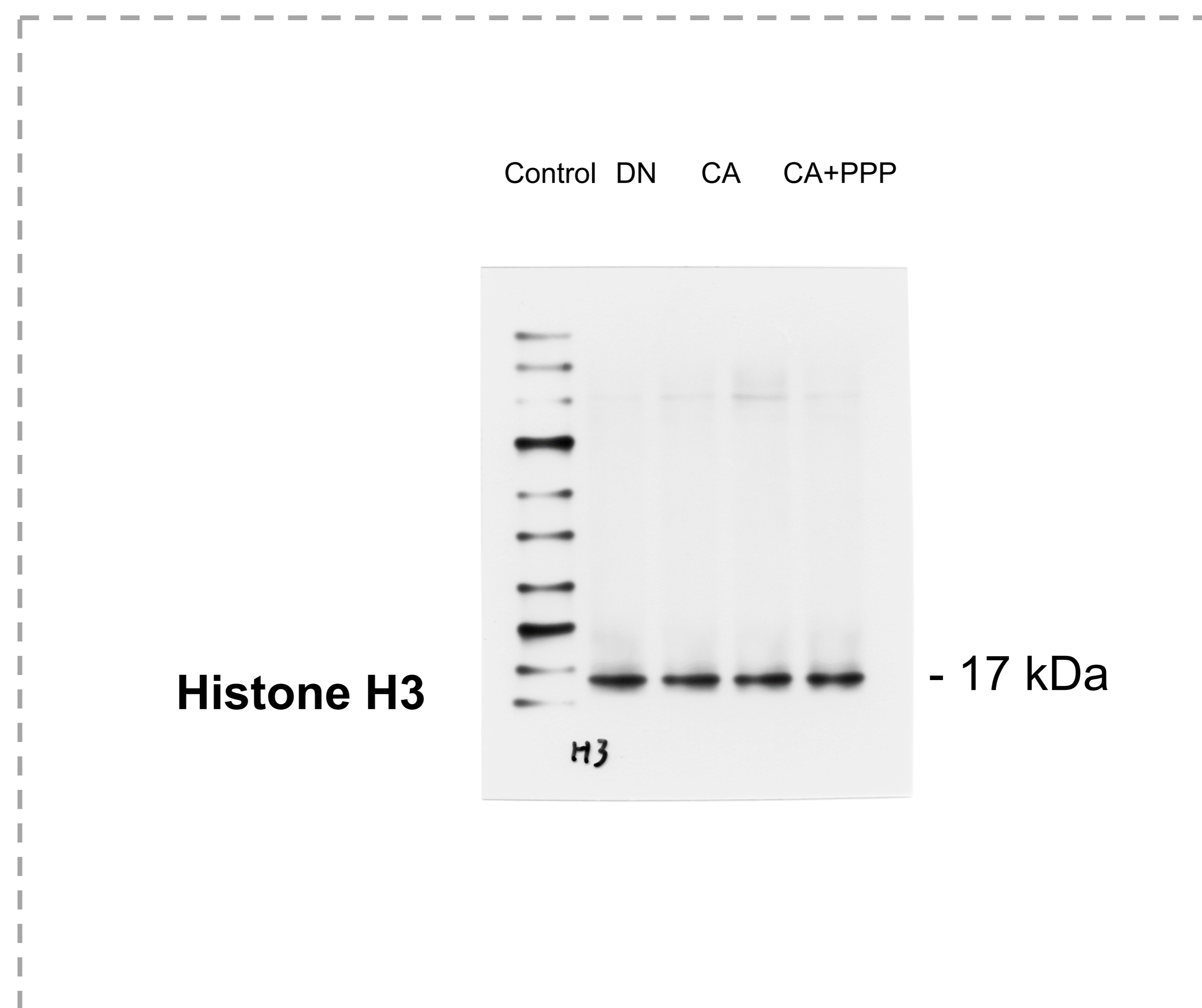
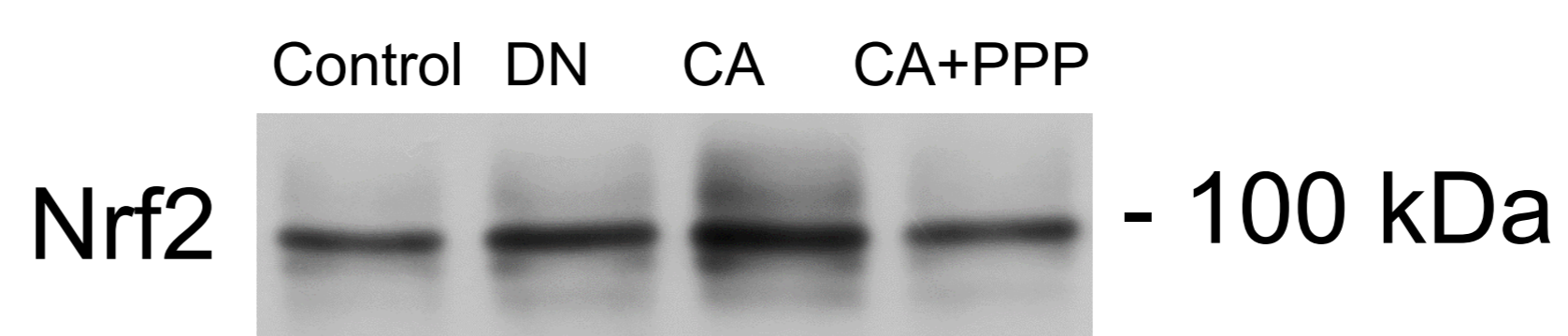
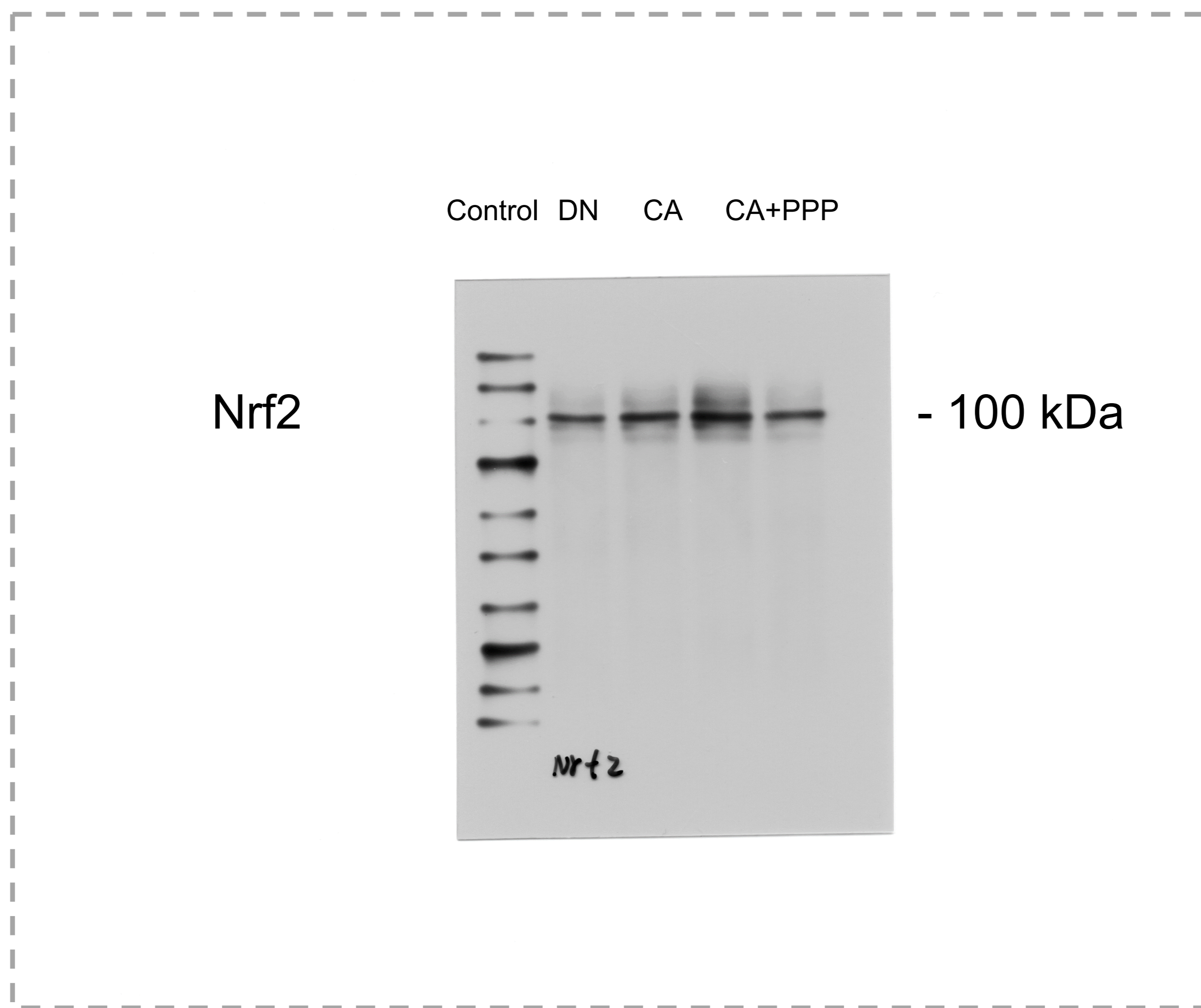


Figure 7C

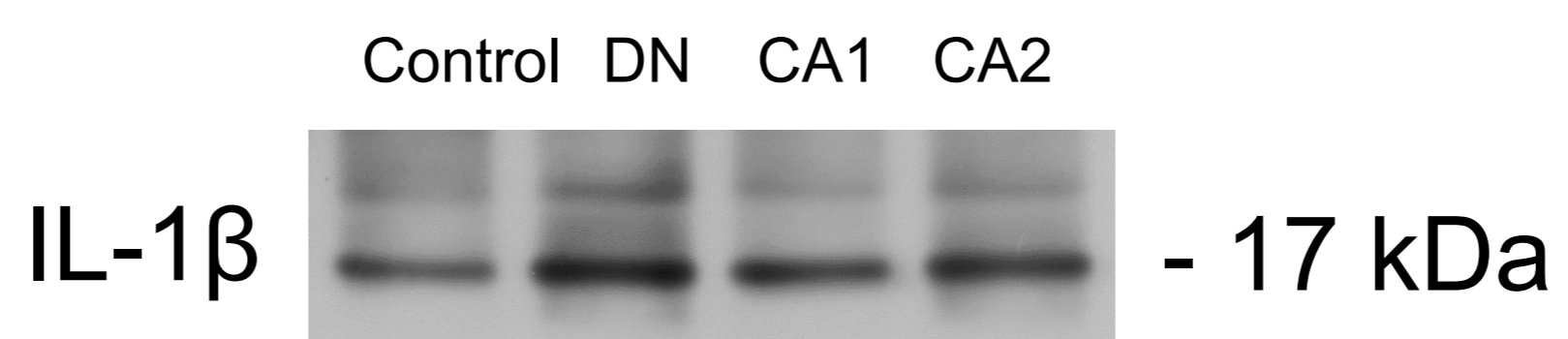
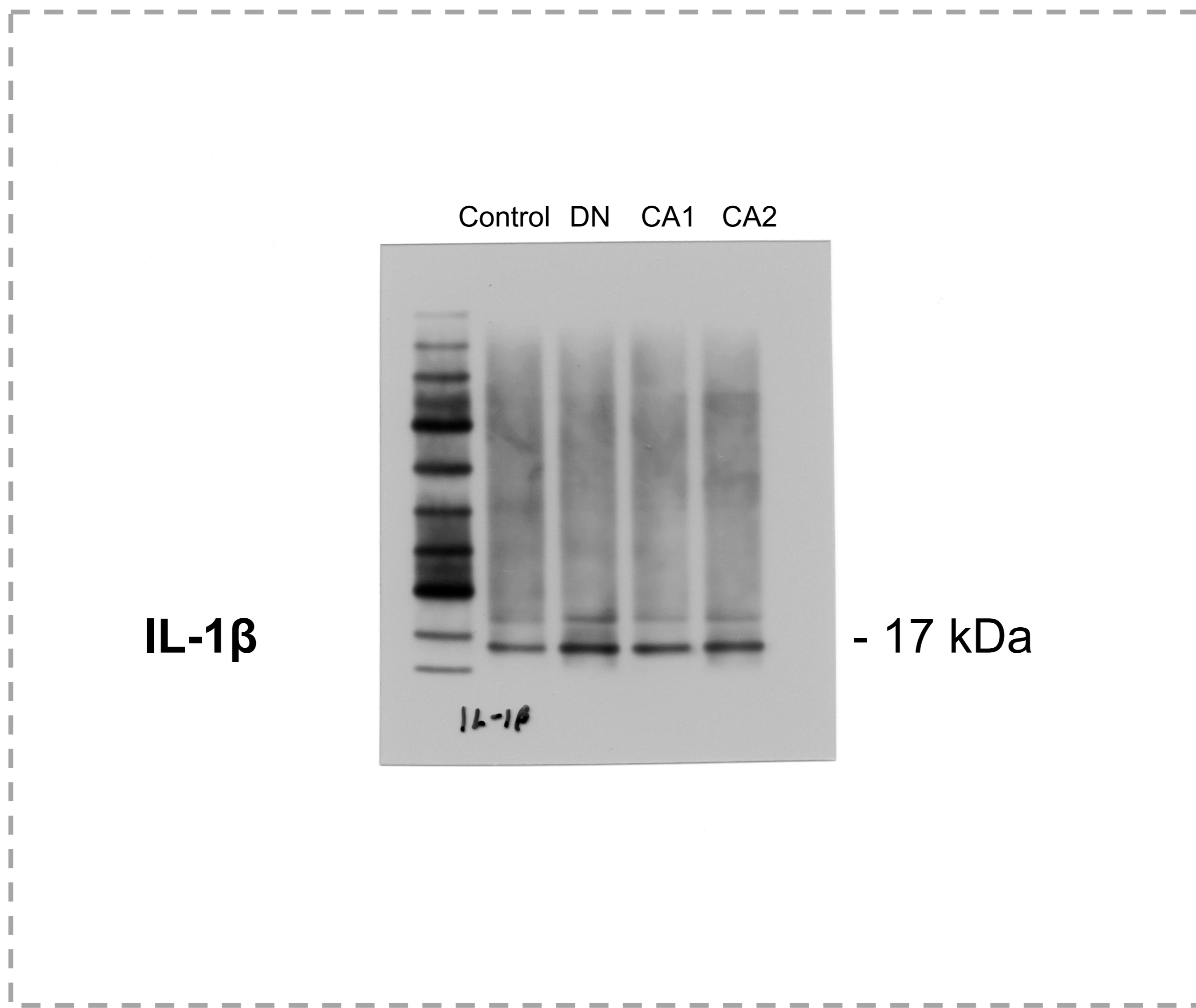
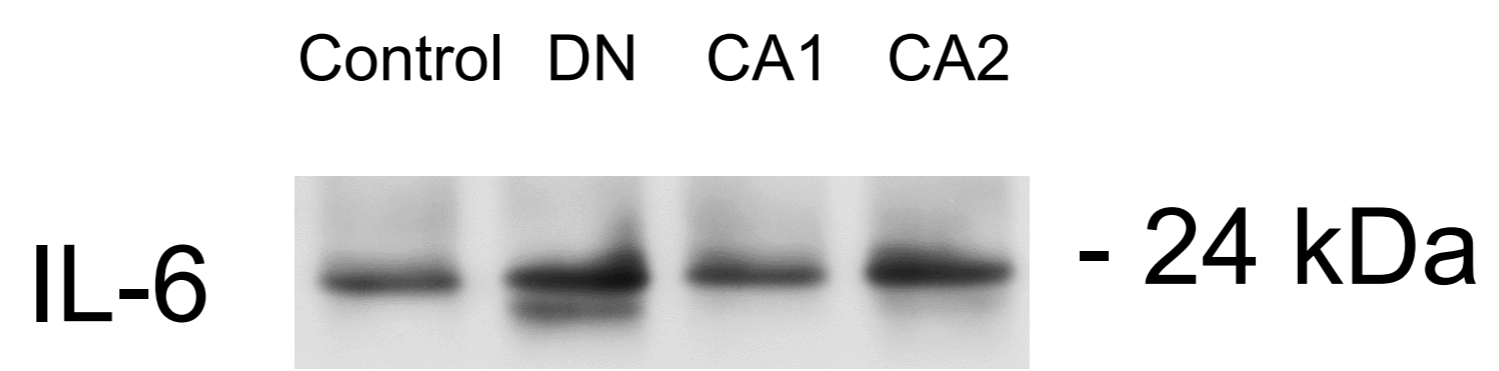
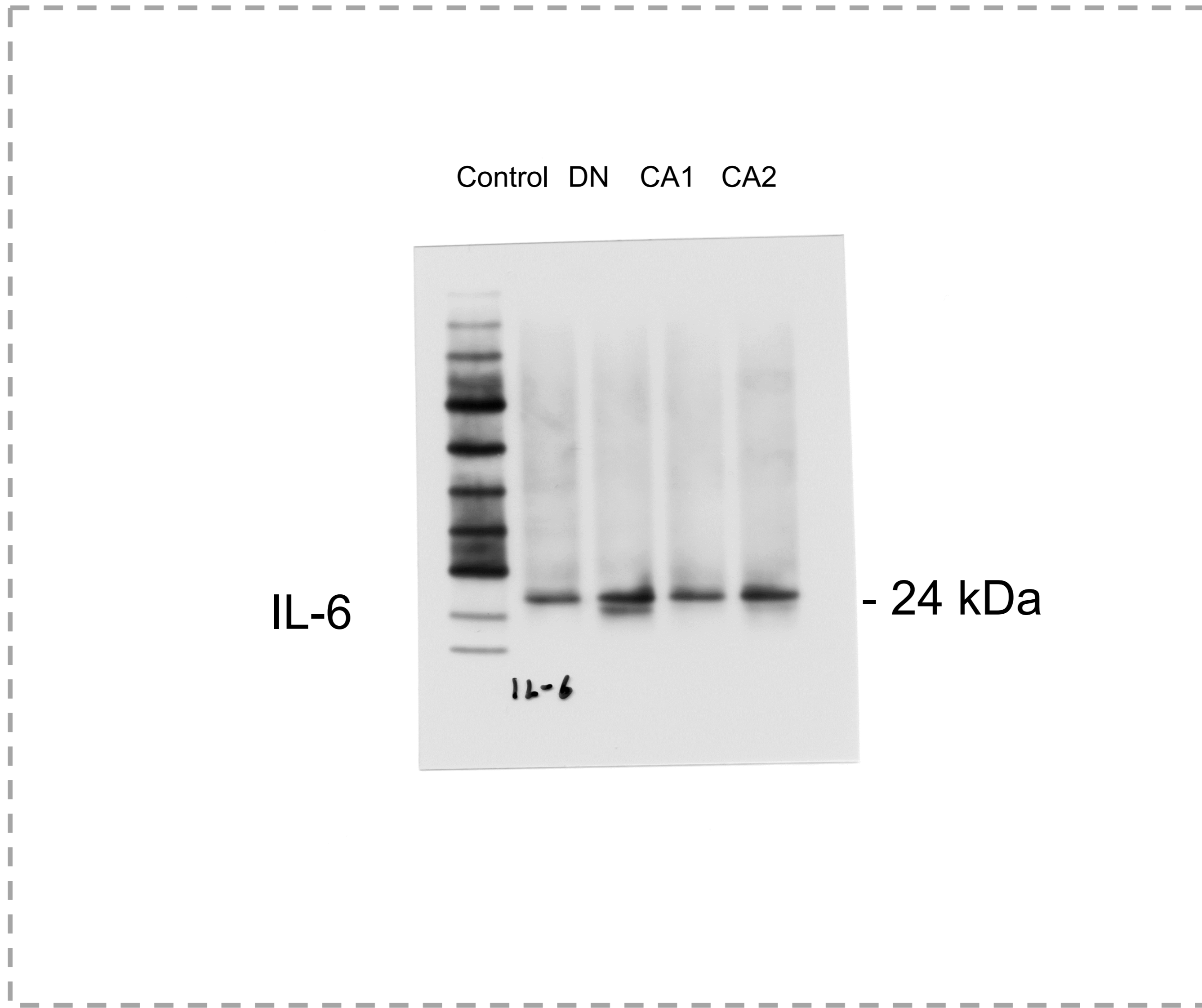
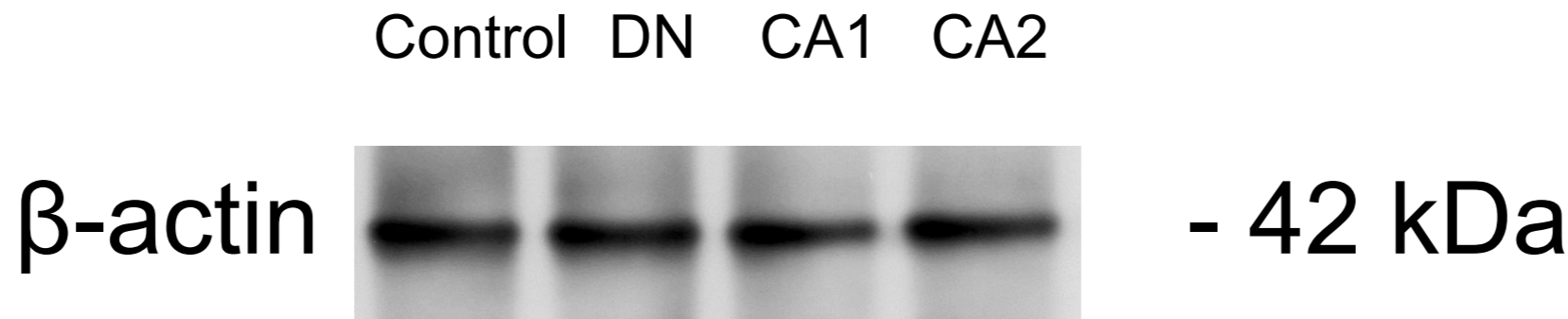
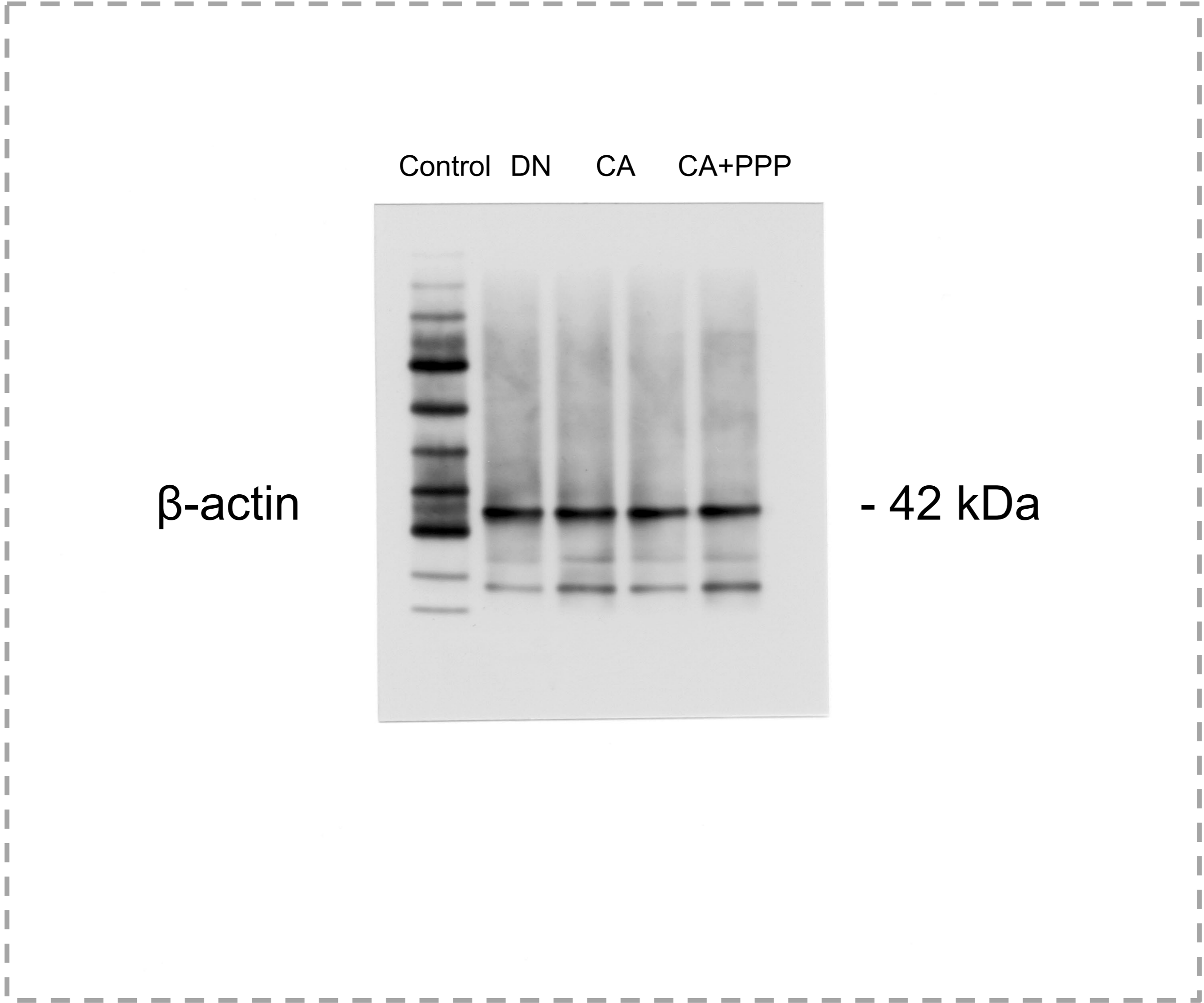
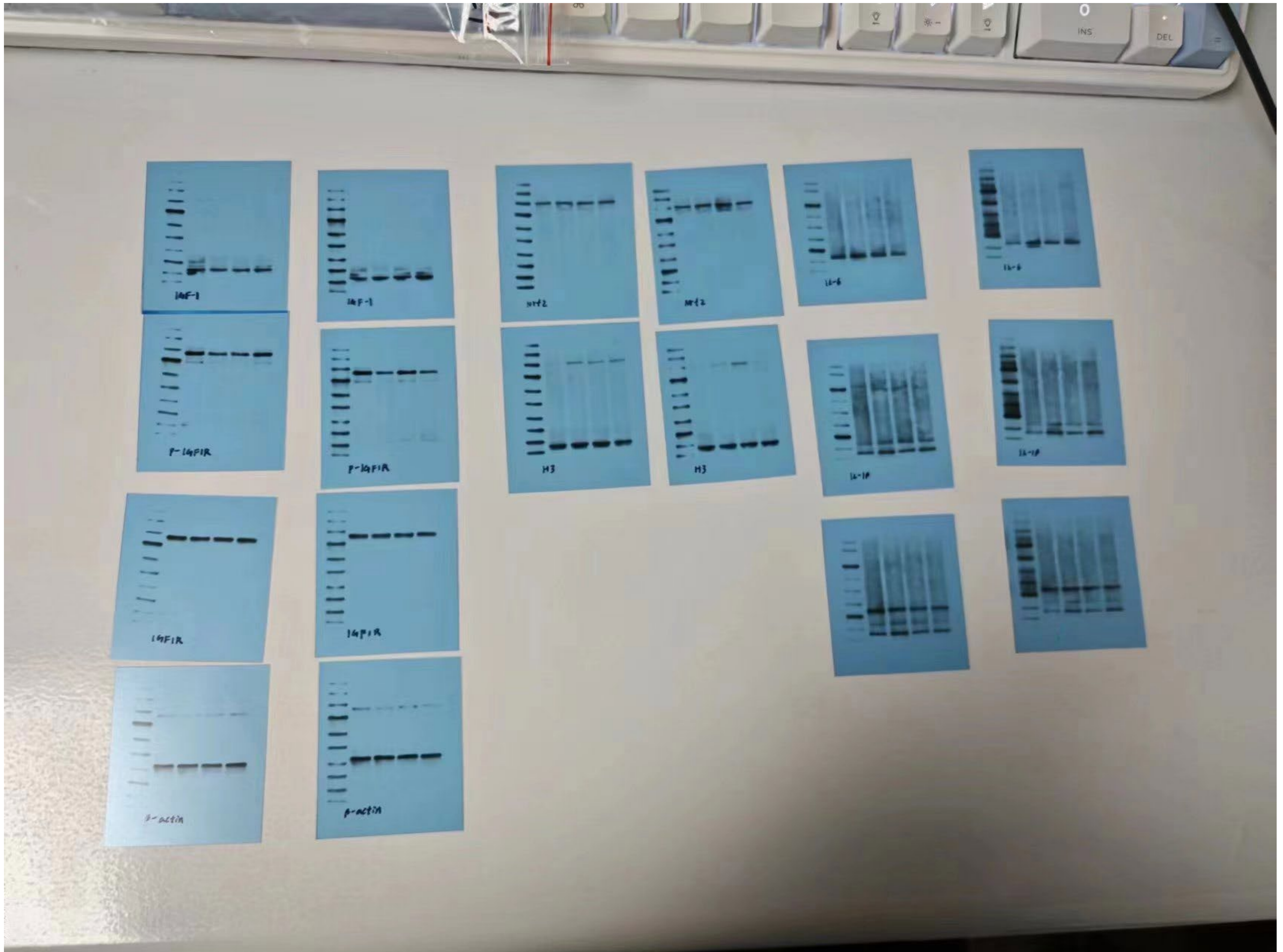


Figure 7C



Collection of western blot films



The collection above encompasses all blot images present in the manuscript. Each Western blot band is developed using film exposure. Following the development and drying of the film, the final Western blot images are captured using a scanner (Epson V550) set to "Black and White" mode.