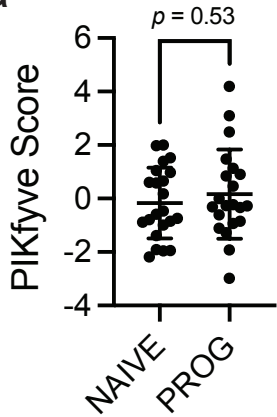
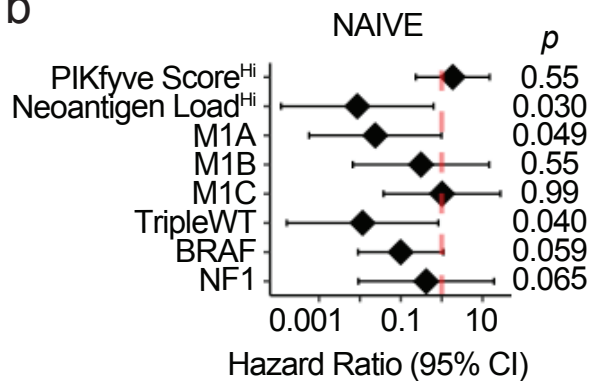


Riaz, *et al*

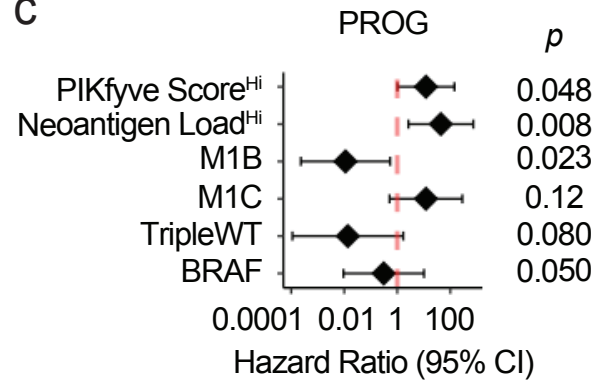
a



b

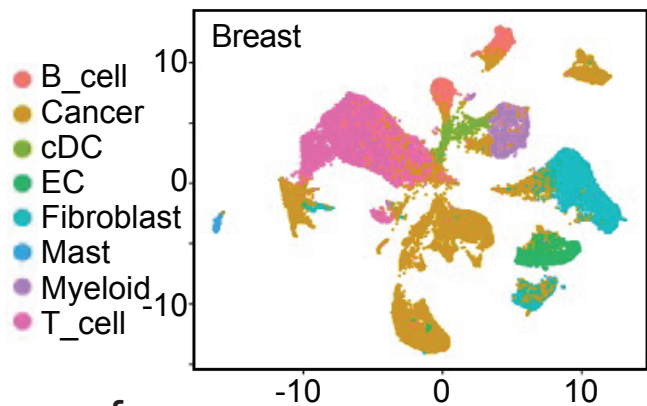


c

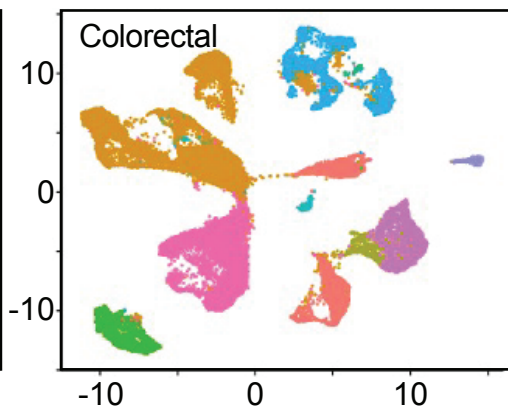


Qian, *et al*

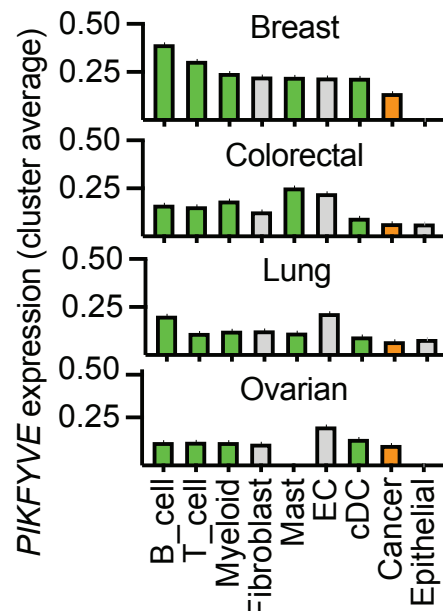
d



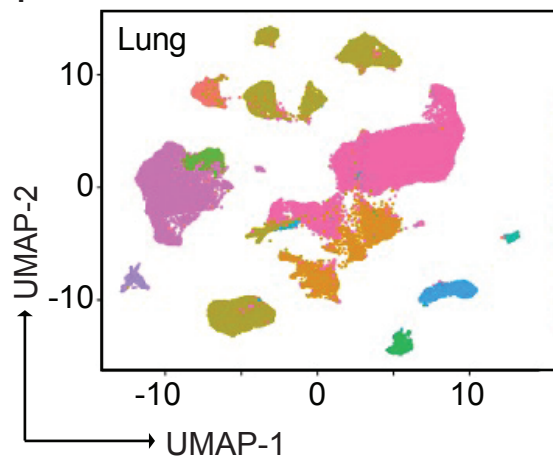
e



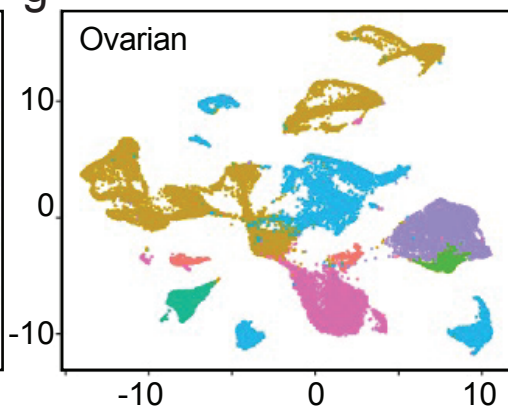
h



f

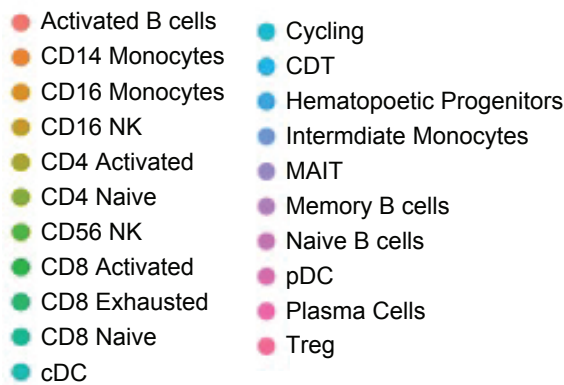
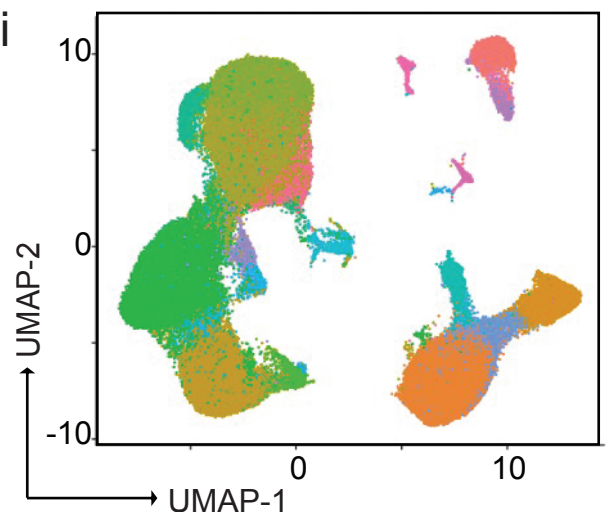


g

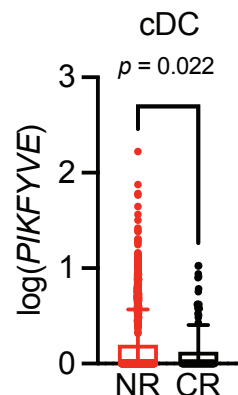


Chow, *et al*

i



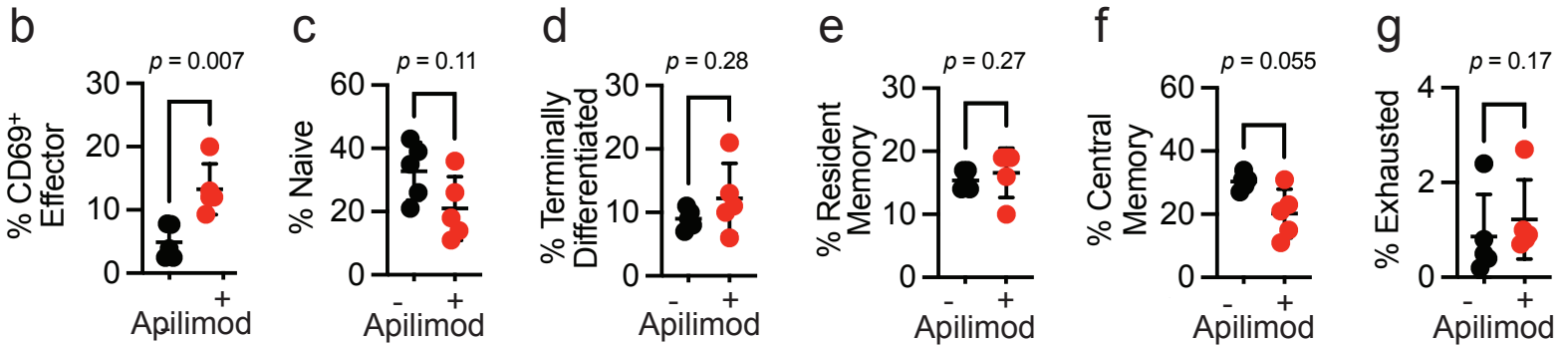
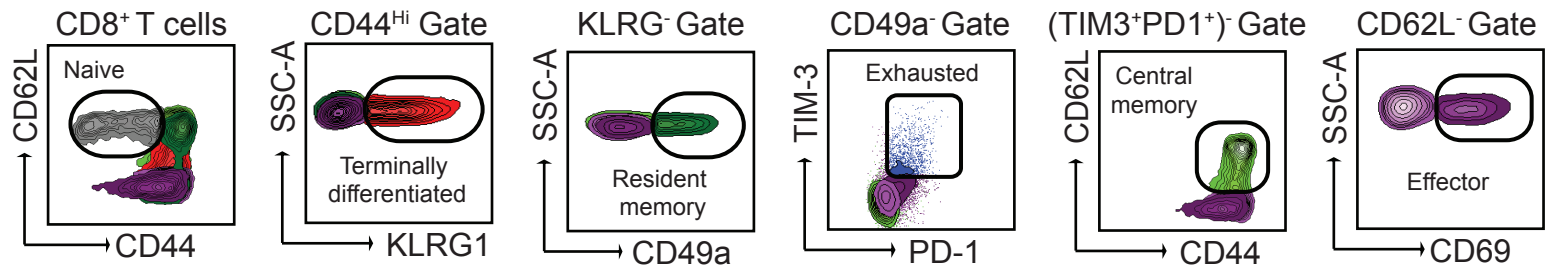
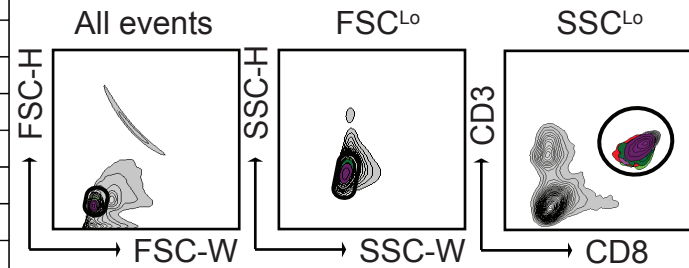
j



a

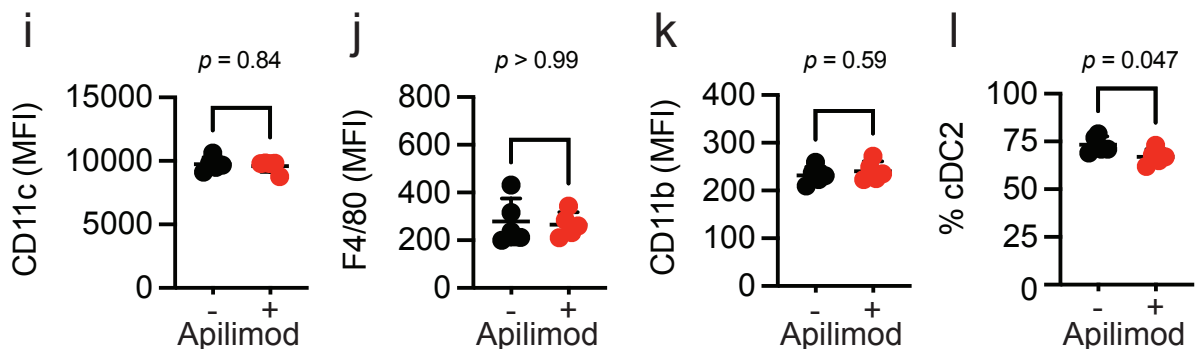
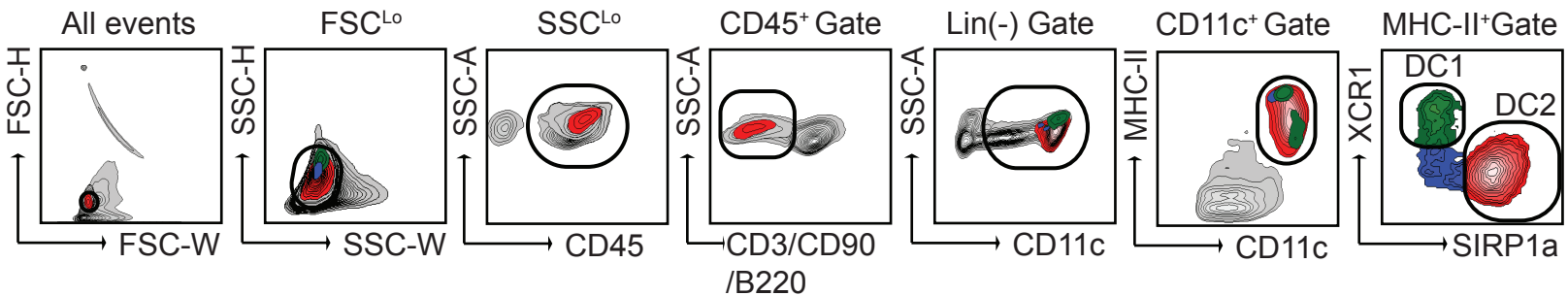
Gating strategy for Supp 2b-g

| Subset | Gating Strategy |
|----------------------------|---|
| Naïve | CD3 ⁺ CD8 ⁺ CD44 ^{Lo} CD62L ⁺ |
| Terminally differentiated | CD3 ⁺ CD8 ⁺ CD44 ^{Hi} KLRG1 ⁺ |
| Resident Memory | CD3 ⁺ CD8 ⁺ CD44 ^{Hi} KLRG1 ⁻ CD49a ⁺ |
| Exhausted | CD3 ⁺ CD8 ⁺ CD44 ^{Hi} KLRG1 ⁻ CD49a ⁻ TIM3 ⁺ PD-1 ⁺ |
| Central memory | CD3 ⁺ CD8 ⁺ CD44 ^{Hi} KLRG1 ⁻ CD49a ⁻ TIM3 ⁻ PD-1 ⁻ CD62L ⁺ |
| CD69 ⁺ Effector | CD3 ⁺ CD8 ⁺ CD44 ^{Hi} KLRG1 ⁻ CD49a ⁻ TIM3 ⁻ PD-1 ⁻ CD62L ⁻ CD69 ⁺ |
| CD69 ⁻ Effector | CD3 ⁺ CD8 ⁺ CD44 ^{Hi} KLRG1 ⁻ CD49a ⁻ TIM3 ⁻ PD-1 ⁻ CD62L ⁻ CD69 ⁻ |

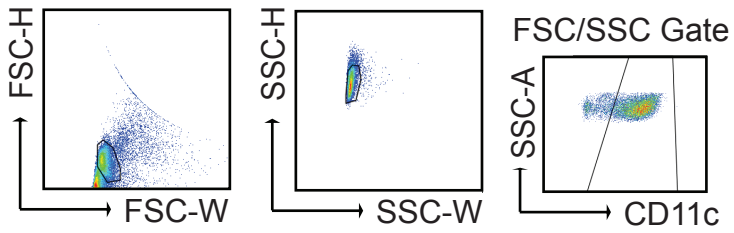


h

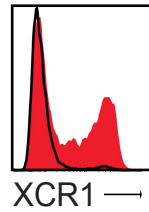
Gating strategy for Fig.2a-b, Supp 2i-l



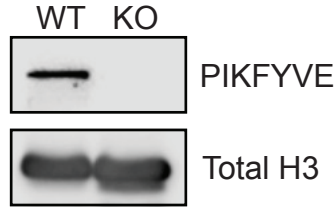
a Gating strategy for Fig.2c-r; Supp 3b-h (cDC)



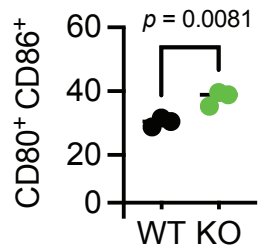
b ■ DMSO
■ Apilimod



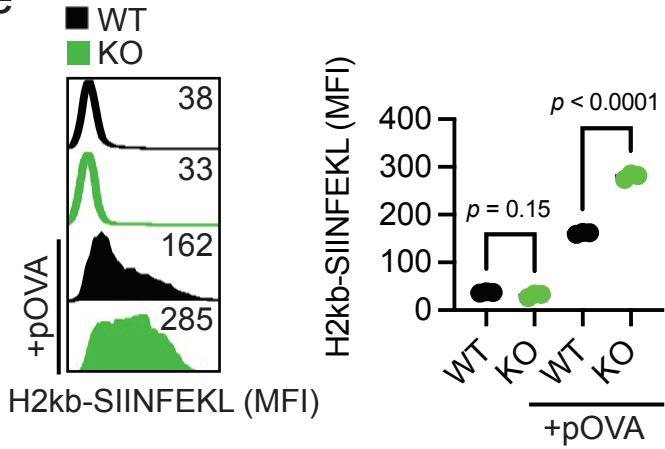
c



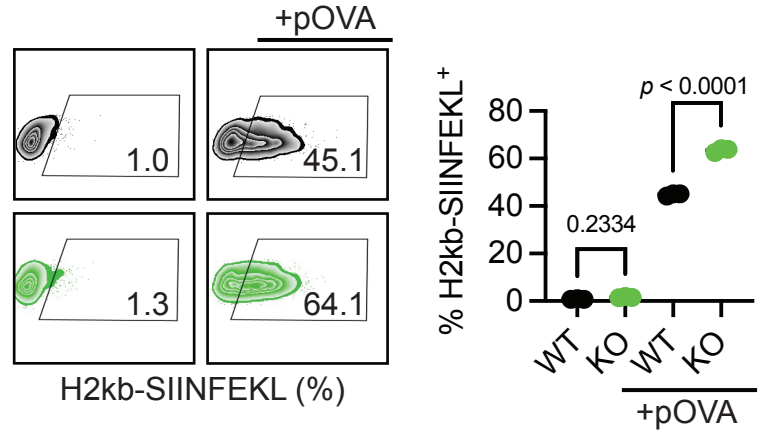
d ■ WT
■ KO



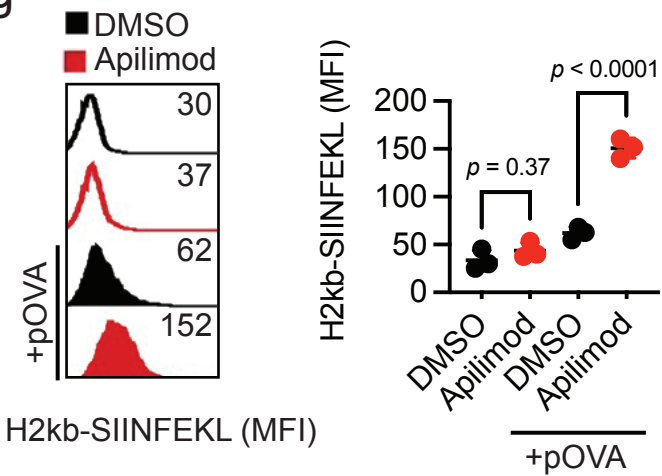
e



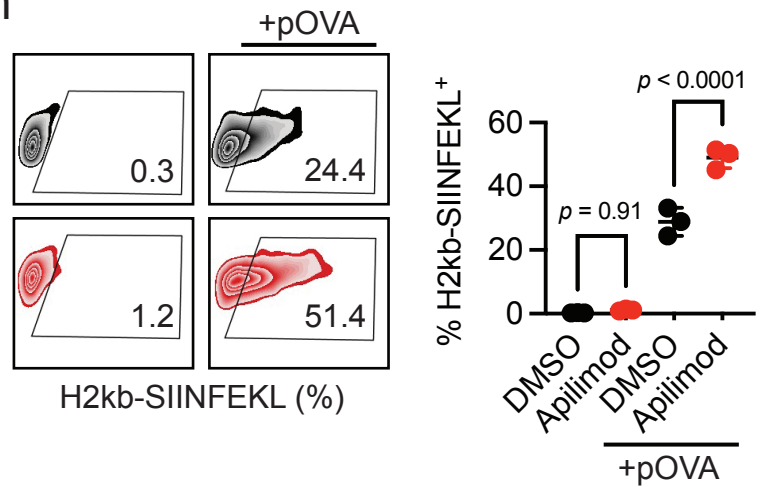
f

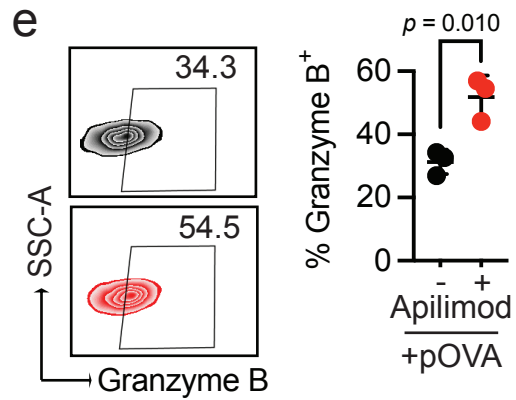
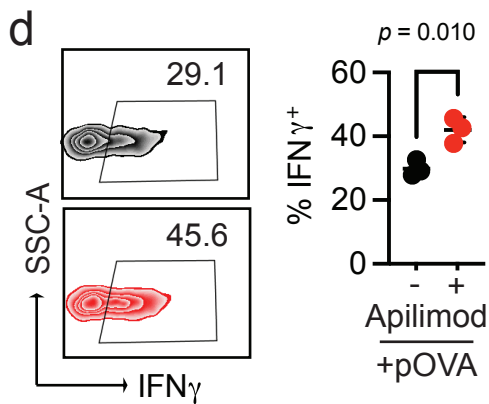
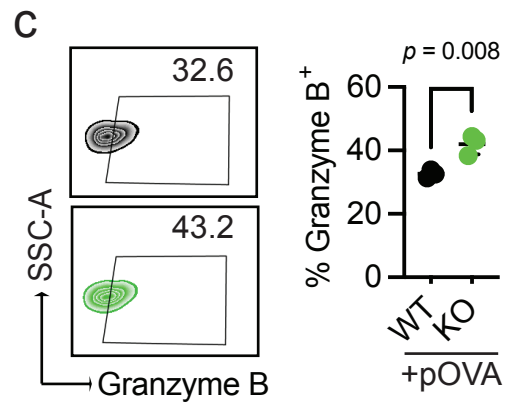
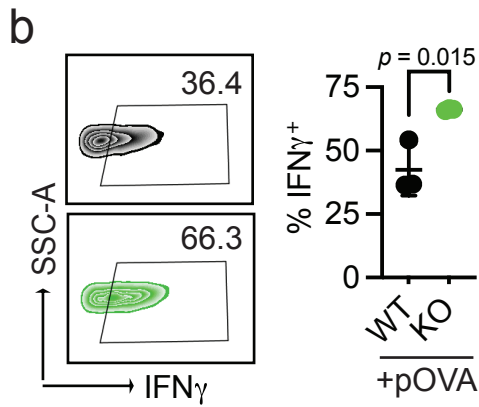
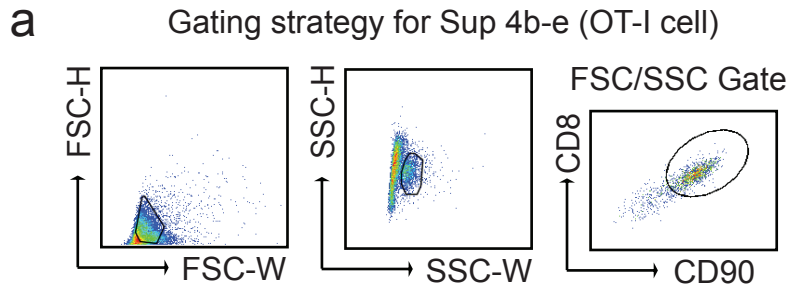


g



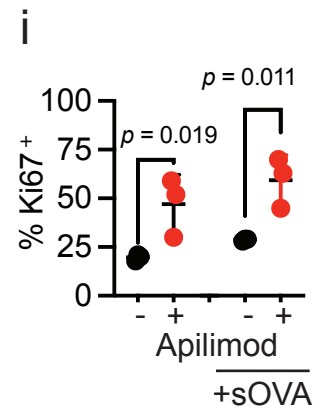
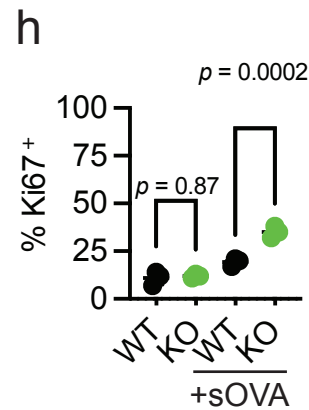
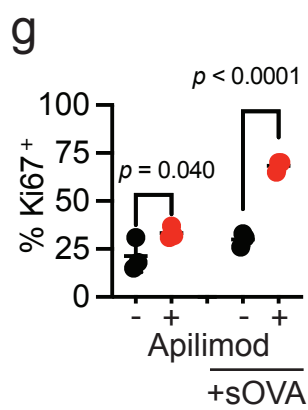
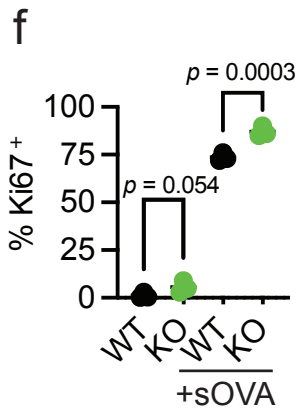
h

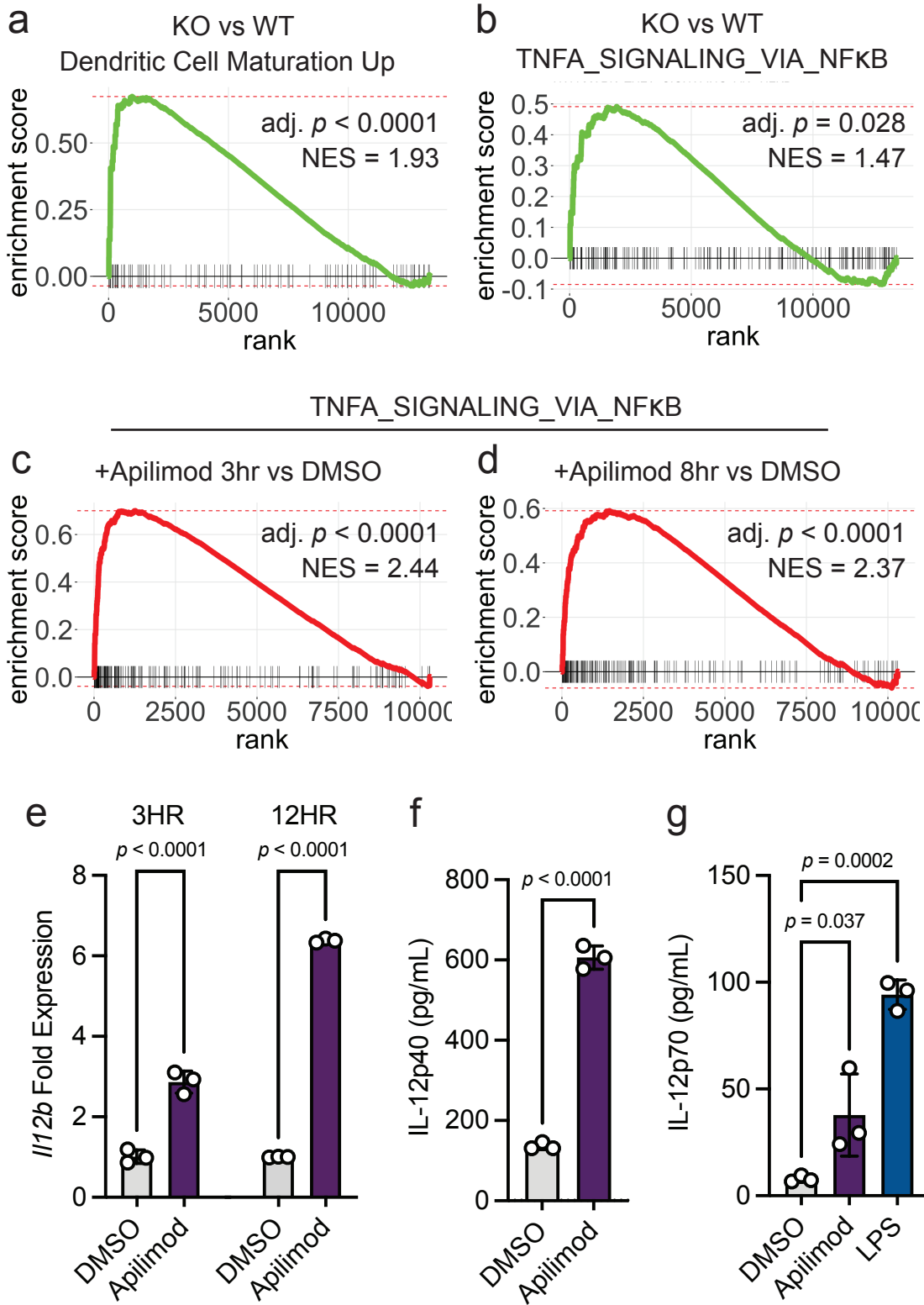


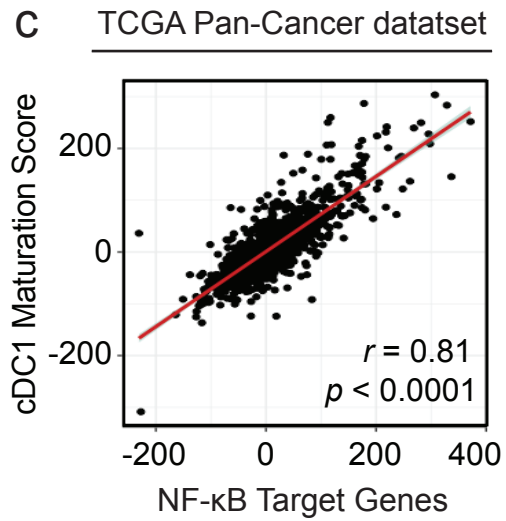
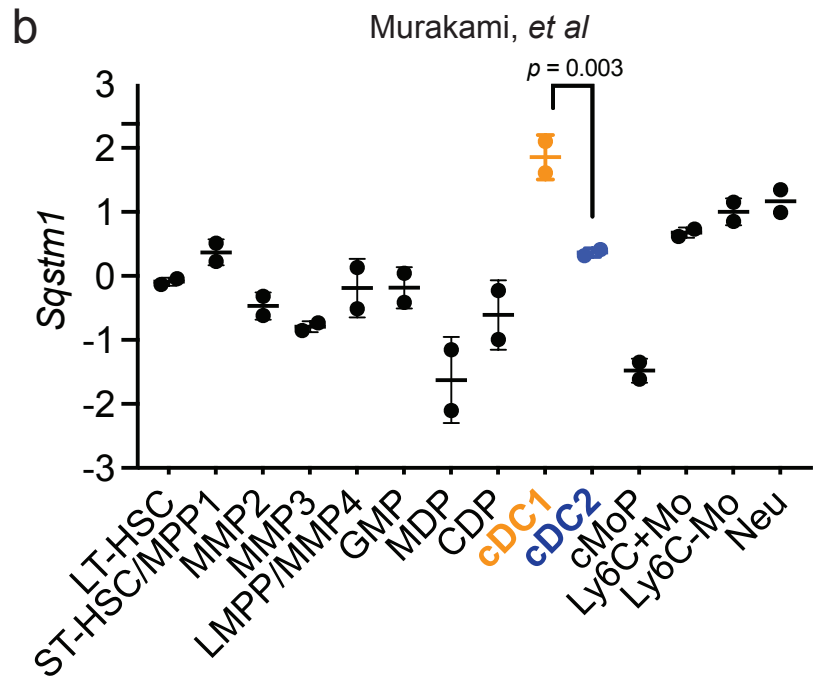
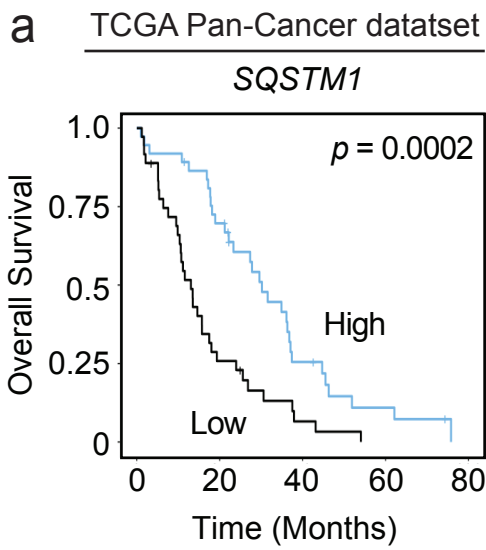


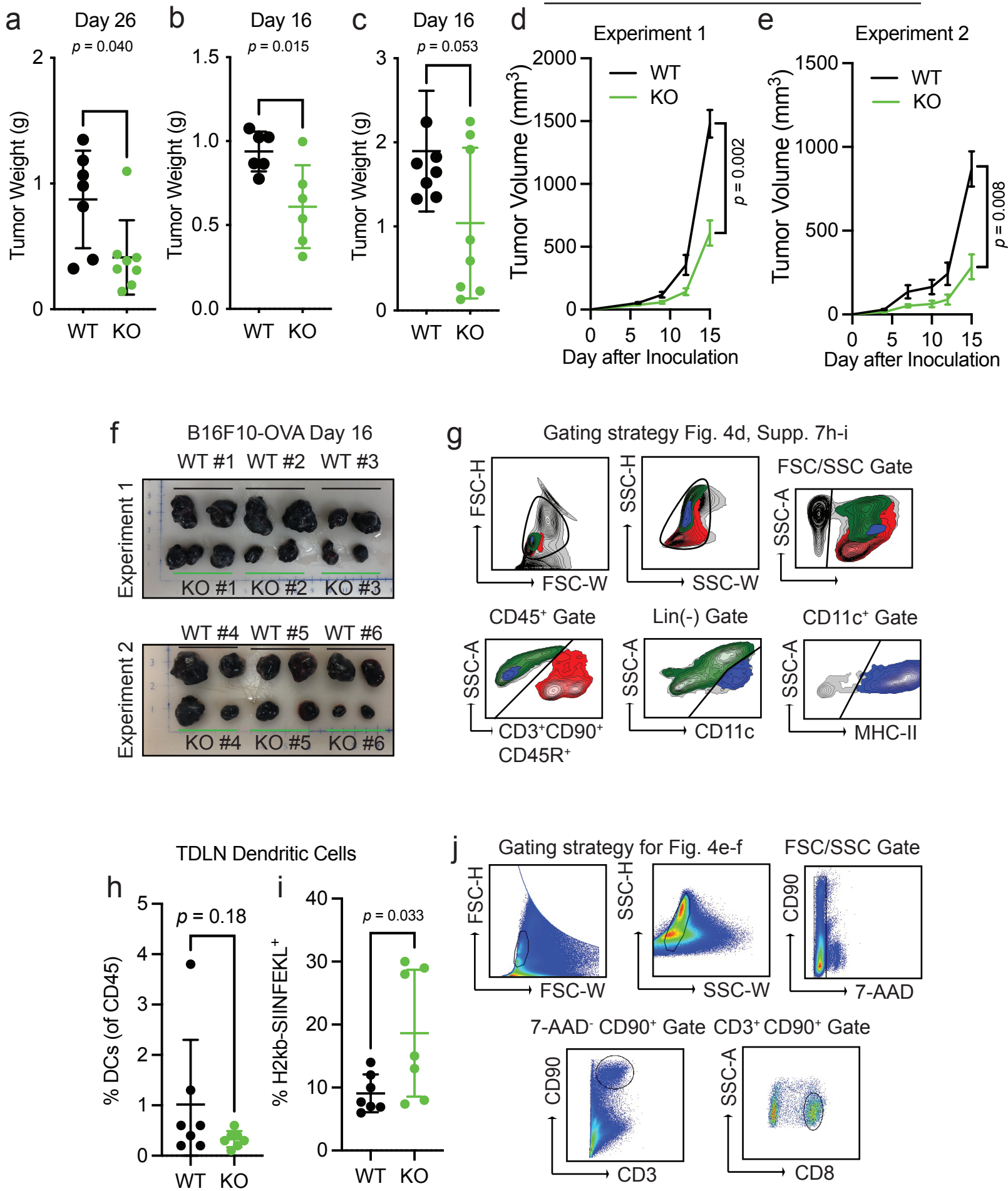
OT-I cells

OT-II cells









B16F10 Tumors Day 6

