

Table S1 Immunohistochemical staining score

No.	Tumour			Normal		
	Intensity of immunostaining	The percentage of positive tumour cells	Weighted score	Intensity of immunostaining	The percentage of positive tumour cells	Weighted score
1	1	2	2 (-)	3	4	12 (+++)
2	1	1	1 (-)	3	3	9 (++)
3	1	2	2 (-)	3	4	12 (+++)
4	0	1	0 (-)	3	4	12 (+++)
5	1	3	3 (+)	3	4	12 (+++)
6	0	1	0 (-)	3	3	9 (++)
7	1	2	2 (-)	2	4	8 (++)
8	0	1	0 (-)	2	3	6 (++)
9	1	1	1 (-)	3	4	12 (+++)
10	1	3	3 (+)	3	4	12 (+++)

The percentage of positive tumour cells and staining intensity were multiplied to produce a weighted score: <3 score (-), 3–5 score (+), 6–9 score (++) , >9 score (+++), which was double-blind detected by two senior diagnostic physicians.

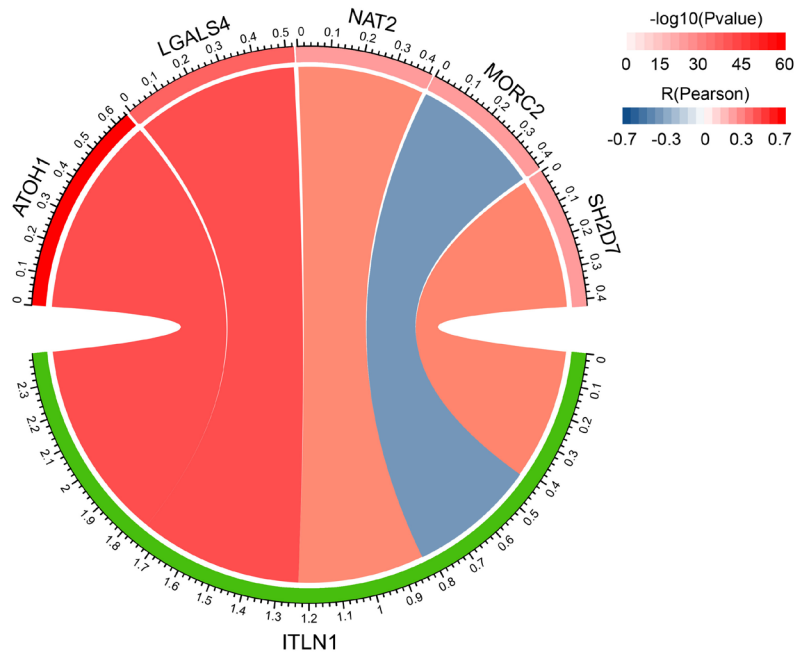


Figure S1 The chord diagram shows the relationship between the five selected genes and *ITLN1*.

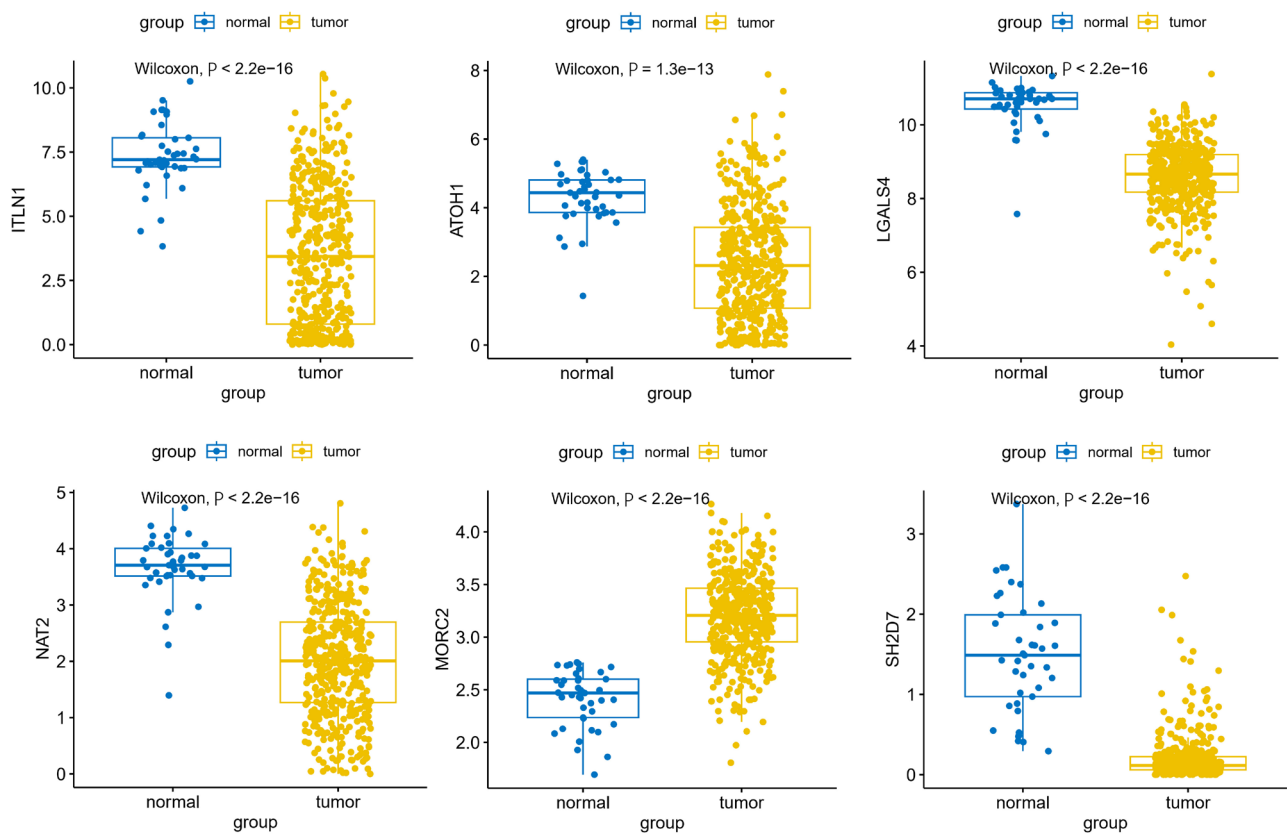


Figure S2 The expression levels of the 6 candidate genes were different between the normal group and the tumour group.

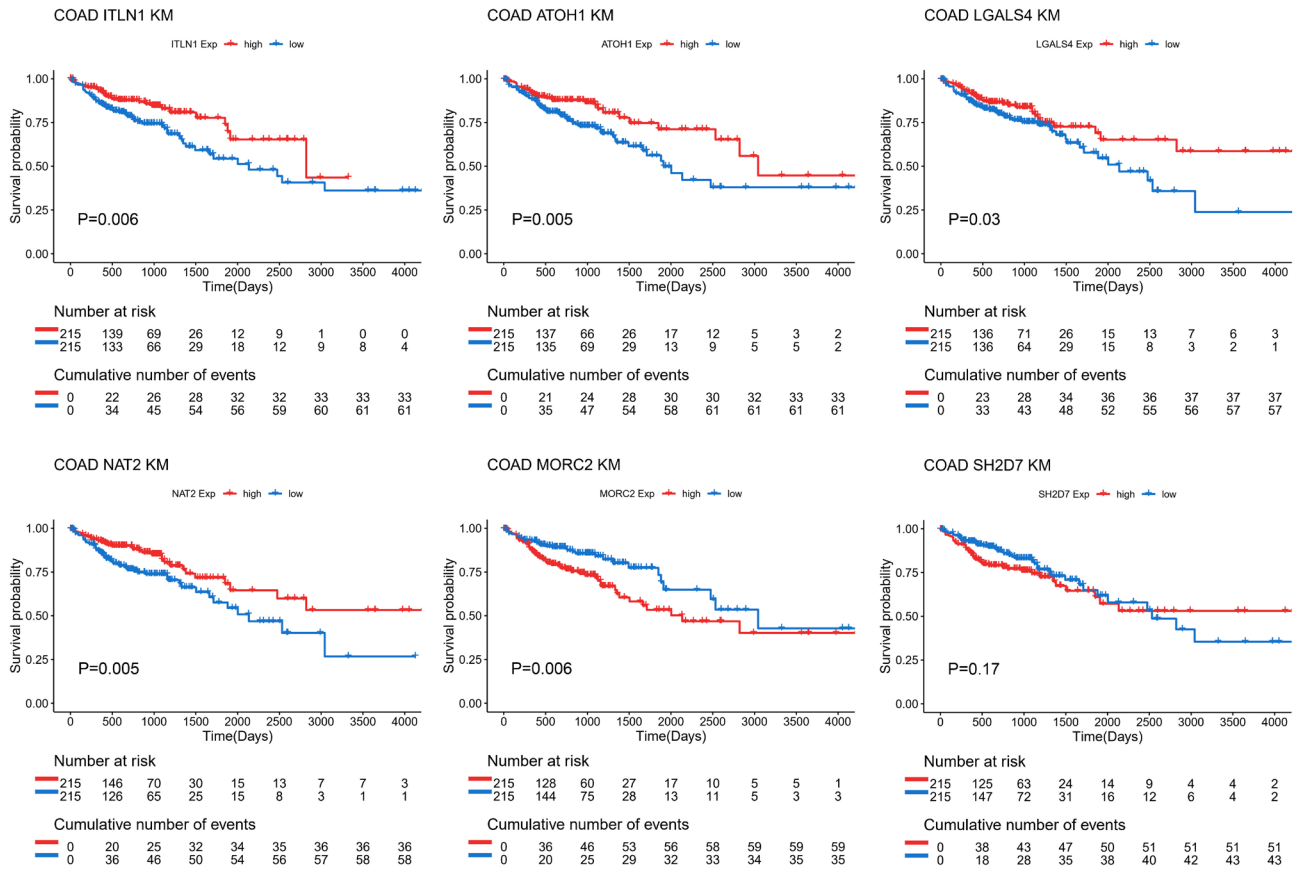


Figure S3 The KM curves show the relationships between *ITLN1*, *ATOH1*, *LGALS4*, *NAT2*, *MORC2*, and *SH2D7* and the survival of COAD patients.

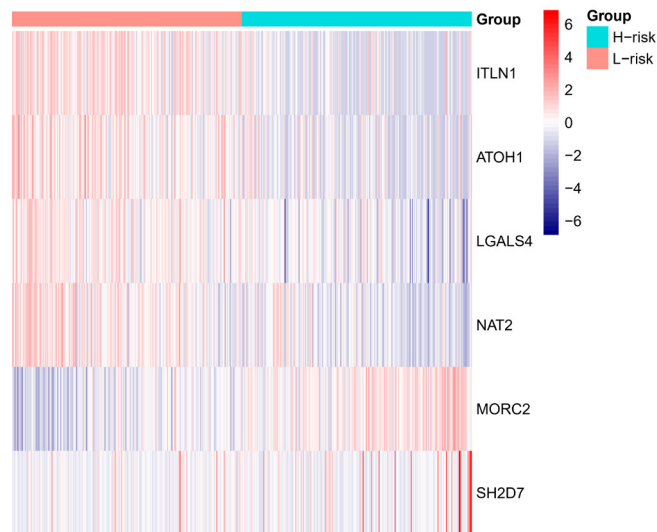


Figure S4 Heatmap of the expression of six genes distributed in high- and low-risk patients.