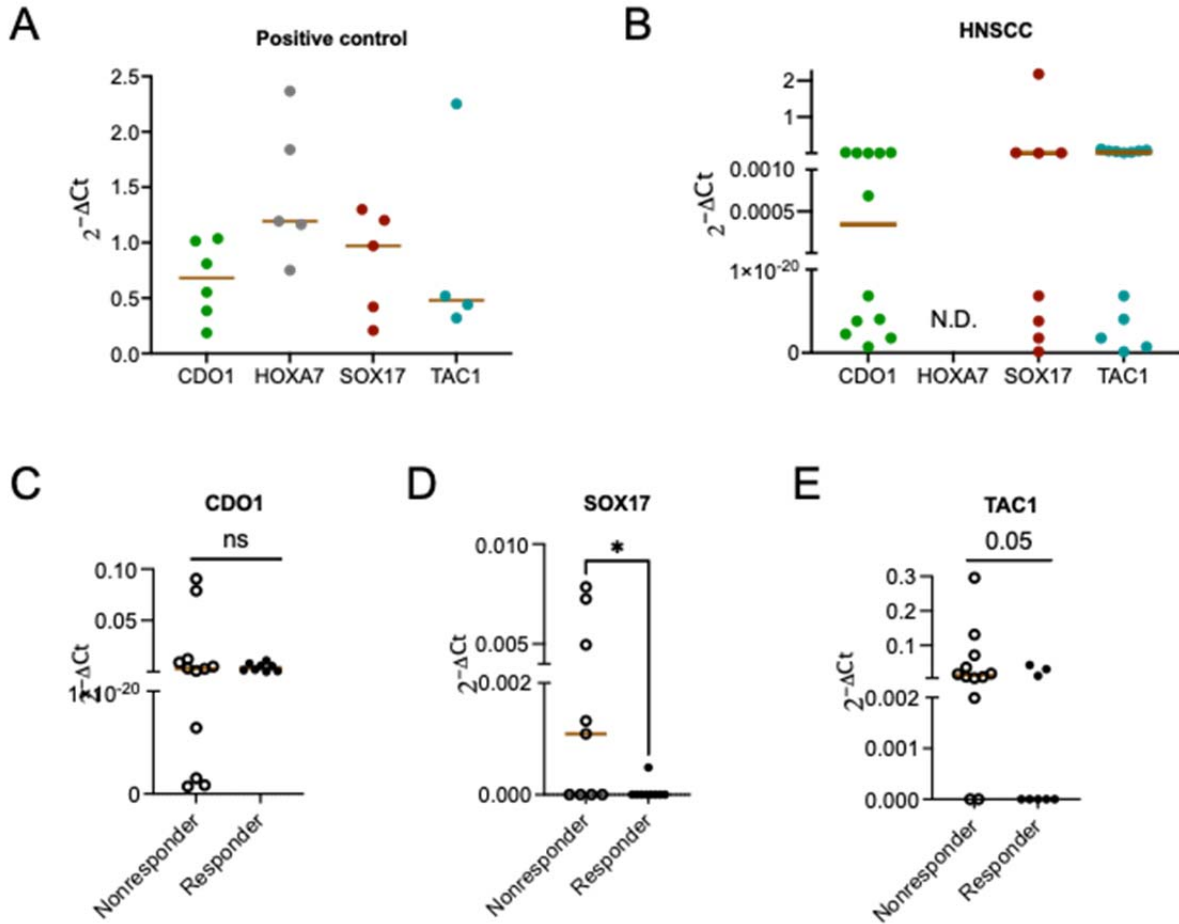


Supplemental Figure 2 – Detection of methylated DNA in plasma of HNSCC patients



Methylated *CDO1*, *HOXA7*, *SOX17* and *TAC1* detection in (A) positive control (H520 cell culture supernatant) and (B) plasma obtained from treatment naïve HNSCC patients. n = 4-5 independent experiments in (A) and 8-11 patients in (B). Line represents median. (C-E) Plasma *CDO1*, *SOX17* and *TAC1* detection in nonresponders (n = 9-12 patients) vs responders (n = 8-9 patients). P < 0.05 by Mann-Whitney U test.