

Content

Site and investigator list of FURLONG study	1
Supplementary Table 1: Baseline demographic and clinical characteristics of patients in the full analysis set, all of whom were included in the patient-reported outcome analysis	4
Supplementary Table 2: Compliance with the patient-reported outcomes assessments	5
Supplementary Table 3: Adjusted least square mean changes from baseline to randomized treatment discontinuation	6
Supplementary Table 4: Adjusted least square mean changes between last PRO assessment and baseline in patients who discontinued treatment (assessment was taken at day 7 after the final dose)	8
Supplementary Figure 1: Changes in other functioning, symptom and financial difficulty from baseline to week 90	10
Supplementary Figure 2: Kaplan-Meier curves of time to deterioration	22

Site and investigator list of FURLONG study

Site	Investigator(s)	Enrolment
National Cancer Center and National Clinical Research Center for Cancer and Cancer Hospital, Chinese Academy of Medical Sciences & Peking Union Medical College	Yuankai Shi	0
Harbin Medical University Cancer Hospital	Gongyan Chen	20
Hunan Cancer Hospital	Lin Wu / Nong Yang	20 (Lin Wu 12, Nong Yang 8)
Xuzhou Central Hospital	Xiang Wang	13
The First Hospital of China Medical University	Yunpeng Liu	13
The People's Hospital of Guangxi Zhuang Autonomous Region	Yanrong Hao	12
Cancer Hospital of Xinjiang Medical University	Chunling Liu	11
The Affiliated Hospital of Xuzhou Medical College	Shuyang Zhu	11
Nantong Cancer Hospital	Xiaodong Zhang	11
The First Affiliated Hospital of Wenzhou Medical University	Yuping Li	11
The First Affiliated Hospital of Dalian Medical University	Jiwei Liu	10
The First Affiliated Hospital of USTC	Lejie Cao	10
Jilin Cancer Hospital	Ying Cheng	10
The Second Hospital of Anhui University	Hui Zhao	9
Beijing Chest Hospital	Shucaizhang	9
Affiliated Hospital of Hebei University	Aimin Zang	8

The First Hospital of Jilin University	Jiuwei Cui	8
Affiliated Hospital of Nantong University	Jian Feng	8
Tianjin Medical University Cancer Institute & Hospital	Changli Wang / Richeng Jiang	7
The First Affiliated Hospital of Xinxiang Medical University	Hongrui Niu	7
Shanxi Province People's Hospital	Mei He	7
The Second People's Hospital of Neijiang	Ou Jiang	7
General Hospital of Ningxia Medical University	Xiuzhong Li	7
Henan Cancer Hospital	Zhiyong Ma	7
Affiliated Cancer Hospital and Institute of Guangzhou Medical University	Chuan Jin	6
The First Affiliated Hospital of Xiamen University	Feng Ye	6
Guangxi Medical University Affiliated Tumor Hospital	Qitao Yu	6
Liaoning Cancer Hospital & Institute	Xiaoling Li	6
Taihe Hospital	Zhiguo Luo	6
The First Affiliated Hospital of Guangzhou Medical University	Chengzhi Zhou	5
Army Medical Center of PLA	Dong Wang	5
Weifang People's Hospital	Guohua Yu	5
Zhongshan Hospital	Qunying Hong	5
Henan Province People's Hospital	Shudong Cang	5
Nanjing First Hospital	Wei Gu	5
The Affiliated Hospital of Inner Mongolia Medical University	Xiuhua Fu	5
Lishui City People's Hospital	Zhuo Cao	5

The Second Affiliated Hospital of Nanchang University	Anwen Liu	4
Liuzhou People's Hospital	Jingzhang Li	4
The First Affiliated Hospital, Zhejiang University	Jiaying Zhou	4
Shanghai Chest Hospital	Liyan Jiang	4
Union Hospital, Tongji Medical College, Huazhong University of Science and Technology	Li Liu	4
The First People's Hospital of Changzhou	Mei Ji	4
The First Affiliated Hospital of Zhengzhou University	Qingxia Fan	4
PLA Cancer Centre of Nanjing Bayi Hospital	Shukai Qin	4
Zhejiang Cancer Hospital	Yiping Zhang	4
Beijing Cancer Hospital	Ziping Wang	4
Beijing Cancer Hospital	Jian Fang	3
Affiliated Hospital of Guilin Medical University	Libing Ma	3
The Second Affiliated Hospital Zhejiang University School of Medicine	Jianjin Huang	2
Sir Run Run Shaw Hospital Zhejiang University School of Medicine	Kejing Ying	2
People's Hospital of Xinjiang Uygur Autonomous Region	Jiang Liu	1
Peking Union Medical College Hospital	Mengzhao Wang	1
Shanghai Changzheng Hospital	Bing Li	0
The Second Hospital of Dalian Medical University	Yang Zhang	0

Supplementary Table 1: Baseline demographic and clinical characteristics of patients in the full analysis set, all of whom were included in the patient-reported outcome analysis

Characteristics		Furmonertinib (N=178)	Gefitinib (N=179)
Age	Median, years (range)	59 (31-81)	60 (32-83)
Sex	Female, n (%)	116 (65)	111 (62)
	Male, n (%)	62 (35)	68 (38)
ECOG PS	0, n (%)	39 (22)	28 (16)
	1, n (%)	138 (78)	151 (84)
	2, n (%)	1 (1)	0
EGFR mutation	Exon 19 deletions, n (%)	91 (51)	92 (51)
	Exon 21 Leu858Arg, n (%)	87 (49)	87 (49)
Smoking history	Yes, n (%)	41 (23)	44 (25)
	No, n (%)	137 (77)	135 (75)
Disease stage	III, n (%)	10 (6)	7 (4)
	IV, n (%)	168 (94)	172 (96)
CNS metastases	Yes, n (%)	63 (35)	58 (32)
	No, n (%)	115 (65)	121 (68)

All patients were Chinese.

ECOG=Eastern Cooperative Oncology Group. PS=performance status. EGFR=epidermal growth factor receptor. CNS=central nervous system.

Supplementary Table 2: Compliance with the patient-reported outcomes assessments

Assessment time point	Furmonertinib (N=178)					Gefitinib (N=179)				
	EORTC QLQ-C30			EORTC QLQ-LC13		EORTC QLQ-C30			EORTC QLQ-LC13	
	Expected, n	Received, n	Compliance, %	Received, n	Compliance, %	Expected, n	Received, n	Compliance, %	Received, n	Compliance, %
Baseline	178	178	100	178	100	179	179	100	179	100
C2D1	176	176	100	176	100	177	177	100	177	100
C3D1	175	175	100	175	100	175	175	100	175	100
C4D1	168	166	98.8	166	98.8	166	165	99.4	165	99.4
C5D1	165	161	97.6	161	97.6	159	158	99.4	158	99.4
C6D1	161	153	95.0	153	95.0	151	147	97.4	147	97.4
C7D1	157	150	95.5	150	95.5	149	147	98.7	146	98.0
C9D1	154	151	98.1	151	98.1	139	136	97.8	136	97.8
C11D1	146	143	97.9	143	97.9	128	124	96.9	123	96.1
C13D1	138	138	100	138	100	114	110	96.5	110	96.5
C15D1	132	132	100	132	100	101	101	100	101	100
C17D1	128	127	99.2	127	99.2	91	90	98.9	90	98.9
C19D1	117	117	100	117	100	80	80	100	79	98.8
C23D1	110	110	100	110	100	66	66	100	66	100
C27D1	95	94	98.9	94	98.9	50	49	98.0	49	98.0
C31D1	83	83	100	83	100	34	34	100	34	100
C35D1	38	38	100	38	100	15	15	100	15	100
Follow-up	102	86	84.3	86	84.3	155	130	83.9	130	83.9

EORTC=European Organization for Research and Treatment of Cancer. QLQ-C30=Quality-of-Life Questionnaire Core 30. QLQ-LC13=Quality-of-Life Questionnaire Lung cancer 13. C=cycle. D=day.

Supplementary Table 3: Adjusted least square mean changes from baseline to randomized treatment discontinuation

	Least square mean changes from baseline		Adjusted between group difference* (95% CI)	p-value
	(95% CI)			
	Furmonertinib (N=178)	Gefitinib (N=179)		
EORTC QLQ-C30				
HRQoL	3.80 (1.76, 5.85)	2.60 (0.51, 4.69)	1.21 (-1.71, 4.13)	0.417
Physical functioning	3.90 (2.58, 5.22)	1.76 (0.40, 3.11)	2.14 (0.25, 4.04)	0.027
Role functioning	1.86 (0.25, 3.47)	0.58 (-1.07, 2.22)	1.29 (-1.01, 3.59)	0.272
Emotional functioning	3.17 (1.89, 4.45)	3.05 (1.74, 4.35)	0.12 (-1.70, 1.95)	0.893
Cognitive functioning	0.20 (-1.14, 1.55)	-0.96 (-2.35, 0.43)	1.16 (-0.77, 3.10)	0.238
Social functioning	1.69 (-0.38, 3.77)	0.16 (-1.96, 2.29)	1.53 (-1.44, 4.50)	0.311
Fatigue	-7.22 (-8.87, -5.56)	-6.00 (-7.71, -4.30)	-1.21 (-3.59, 1.16)	0.317
Nausea/vomiting	-2.29 (-3.03, -1.55)	-0.73 (-1.50, 0.03)	-1.56 (-2.62, -0.49)	0.004
Pain	-8.17 (-9.86, -6.66)	-6.12 (-7.70, -4.54)	-2.05 (-4.24, 0.14)	0.066
Dyspnoea	-6.47 (-8.21, -4.73)	-4.83 (-6.63, -3.03)	-1.64 (-4.14, 0.87)	0.199
Insomnia	-7.22 (-8.80, -5.64)	-6.72 (-8.36, -5.08)	-0.50 (-2.78, 1.78)	0.666
Appetite loss	-4.26 (-5.56, -2.86)	-2.02 (-3.47, -0.56)	-2.24 (-4.26, -0.23)	0.029
Constipation	-1.58 (-2.74, -0.42)	-1.98 (-3.19, -0.77)	0.40 (-1.28, 2.07)	0.642
Diarrhoea	1.93 (0.67, 3.19)	5.29 (3.97, 6.61)	-3.36 (-5.19, -1.54)	<0.001
Financial difficulties	-7.27 (-10.04, -4.49)	-5.19 (-8.03, -2.35)	-2.08 (-6.05, 1.89)	0.304
EORTC QLQ-L13				
Dyspnoea	-6.65 (-8.27, -5.04)	-4.51 (-6.16, -2.85)	-2.15 (-4.46, 0.16)	0.068
Cough	-15.08 (-17.21, -12.96)	-16.28 (-18.47, -14.09)	1.20 (-1.85, 4.25)	0.440
Haemoptysis	-1.72 (-2.36, -1.08)	-1.52 (-2.17, -0.87)	-0.20 (-1.12, 0.71)	0.663
Sore mouth	1.62	2.56	-0.94	0.336

	(0.28, 2.95)	(1.17, 3.94)	(-2.86, 0.98)	
Dysphagia	-0.95 (-2.05, 0.14)	0.00 (-1.14, 1.13)	-0.95 (-2.53, 0.63)	0.238
Peripheral neuropathy	-2.48 (-3.78, -1.18)	-2.79 (-4.15, -1.43)	0.31 (-1.58, 2.19)	0.750
Alopecia	-0.51 (-1.83, 0.82)	2.12 (0.73, 3.50)	-2.62 (-4.54, -0.71)	0.007
Chest pain	-10.39 (-12.20, -8.57)	-8.86 (-10.75, -6.98)	-1.52 (-4.14, 1.10)	0.253
Pain in arm or shoulder	-7.04 (-8.74, -5.34)	-5.71 (-7.47, -3.94)	-1.33 (-3.79, 1.12)	0.286
Pain in other parts	-8.44 (-10.38, -6.49)	-3.88 (-5.91, -1.86)	-4.55 (-7.37, -1.74)	0.002

*A difference higher than 0 Favors furmonertinib for HRQoL and functioning scales; difference lower than 0 Favors furmonertinib for symptom scales.

CI=confidence interval. EORTC=European Organization for Research and Treatment of Cancer. QLQ-C30=Quality-of-Life Questionnaire Core 30. HRQoL=health-related quality of life. QLQ-LC13=Quality-of-Life Questionnaire Lung cancer 13.

Supplementary Table 4: Adjusted least square mean changes between last PRO assessment and baseline in patients who discontinued treatment (assessment was taken at day 7 after the final dose)

	Least square mean changes from baseline (95% CI)		Adjusted between group difference* (95% CI)	p-value
	Furmonertinib (N=86)	Gefitinib (N=130)		
EORTC QLQ-C30				
HRQoL	-2.96 (-6.80, 0.87)	-4.30 (-7.66, -0.94)	1.34 (-3.76, 6.43)	0.606
Physical functioning	-1.03 (-4.43, 2.37)	-2.47 (-5.46, 0.52)	1.44 (-3.10, 5.98)	0.533
Role functioning	-4.95 (-8.80, -1.11)	-3.72 (-7.06, -0.37)	-1.23 (-6.33, 3.86)	0.634
Emotional functioning	0.29 (-2.46, 3.04)	-0.62 (-3.06, 1.82)	0.91 (-2.76, 4.58)	0.627
Cognitive functioning	-3.48 (-6.74, -0.23)	-3.92 (-6.70, -1.13)	0.44 (-3.84, 4.71)	0.840
Social functioning	-5.88 (-10.07, -1.70)	-4.93 (-8.59, -1.26)	-0.96 (-6.51, 4.60)	0.735
Fatigue	0.00 (-3.89, 3.88)	-1.65 (-5.04, 1.74)	1.64 (-3.52, 6.81)	0.532
Nausea/vomiting	0.80 (-2.36, 3.96)	2.56 (-0.11, 5.23)	-1.76 (-5.89, 2.38)	0.403
Pain	-1.17 (-4.94, 2.60)	-0.47 (-3.69, 2.76)	-0.70 (-5.68, 4.28)	0.781
Dyspnoea	-5.95 (-9.86, -2.04)	-0.78 (-4.12, 2.56)	-5.17 (-10.30, -0.05)	0.048
Insomnia	-4.08 (-8.01, -0.15)	-4.09 (-7.37, -0.81)	0.01 (-5.10, 5.12)	0.998
Appetite loss	2.30 (-1.66, 6.26)	2.52 (-0.94, 5.98)	-0.22 (-5.47, 5.03)	0.934
Constipation	-0.28 (-3.56, 2.99)	-0.07 (-2.84, 2.70)	-0.21 (-4.50, 4.08)	0.923
Diarrhoea	1.26 (-1.43, 3.96)	4.91 (2.65, 7.17)	-3.65 (-7.16, -0.13)	0.042
Financial difficulties	-4.63 (-9.15, -0.11)	-2.11 (-6.12, 1.90)	-2.52 (-8.57, 3.52)	0.412
EORTC QLQ-L13				
Dyspnoea	-2.88 (-6.36, 0.59)	-0.86 (-3.89, 2.17)	-2.02 (-6.64, 2.59)	0.389
Cough	-10.08 (-14.34, -5.81)	-13.64 (-17.31, -9.97)	3.57 (-2.06, 9.19)	0.213
Haemoptysis	-0.56 (-2.99, 1.87)	0.40 (-1.65, 2.45)	-0.96 (-4.14, 2.22)	0.553

Sore mouth	1.09 (-1.66, 3.84)	2.34 (-0.11, 4.80)	-1.26 (-4.94, 2.43)	0.503
Dysphagia	-0.51 (-3.16, 2.14)	1.98 (-0.31, 4.26)	-2.49 (-5.99, 1.01)	0.163
Peripheral neuropathy	-0.75 (-4.03, 2.53)	-0.92 (-3.73, 1.89)	0.17 (-4.15, 4.49)	0.938
Alopecia	-1.81 (-4.61, 0.98)	3.21 (0.84, 5.58)	-5.02 (-8.69, -1.35)	0.008
Chest pain	-5.80 (-9.70, -1.91)	-5.07 (-8.37, -1.76)	-0.74 (-5.84, 4.37)	0.776
Pain in arm or shoulder	-5.06 (-8.80, -1.32)	-3.18 (-6.37, 0.02)	-1.88 (-6.81, 3.04)	0.452
Pain in other parts	-2.63 (-6.68, 1.42)	-1.83 (-5.29, 1.62)	-0.80 (-6.13, 4.54)	0.769

*A difference higher than 0 Favors furmonertinib for HRQoL and functioning scales; difference lower than 0 Favors furmonertinib for symptom scales.

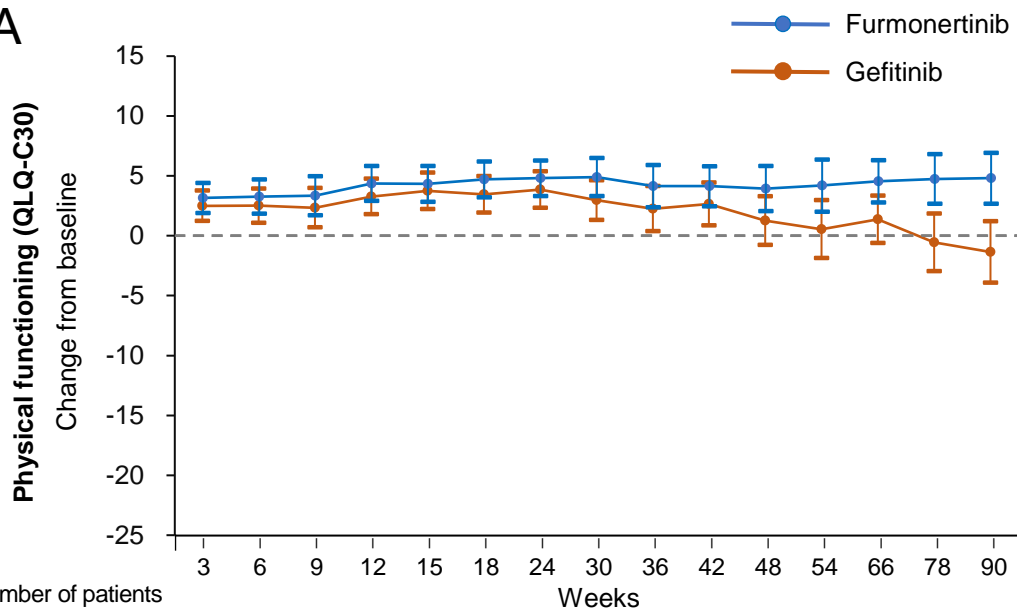
PRO=patient-reported outcomes. CI=confidence interval. EORTC=European Organization for Research and Treatment of Cancer. QLQ-C30=Quality-of-Life Questionnaire Core 30. HRQoL=health-related quality of life. QLQ-LC13=Quality-of-Life Questionnaire Lung cancer 13.

Supplementary Figure 1: Changes in other functioning, symptom and financial difficulty from baseline to week 90

Data are mean change in mixed model for repeated measures-adjusted scores (95% CI). Data are (A) physical functioning, (B) role functioning, (C) emotional functioning, (D) cognitive functioning, (E) social functioning, (F) fatigue, (G) nausea/vomiting, (H) pain, (I) dyspnoea, (J) insomnia, (K) appetite loss, (L) constipation, (M) diarrhoea, (N) financial difficulties; all from the EORTC QLQ-C30, and (O) dyspnoea, (P) haemoptysis, (Q) sore mouth, (R) dysphagia, (S) peripheral neuropathy, (T) alopecia, (U) pain in armor shoulder, (V) pain in other parts; all from the EORTC QLQ-LC13.

EORTC=European Organization for Research and Treatment of Cancer. QLQ-C30=Quality-of-Life Questionnaire Core 30. QLQ-LC13=Quality-of-Life Questionnaire Lung cancer 13.

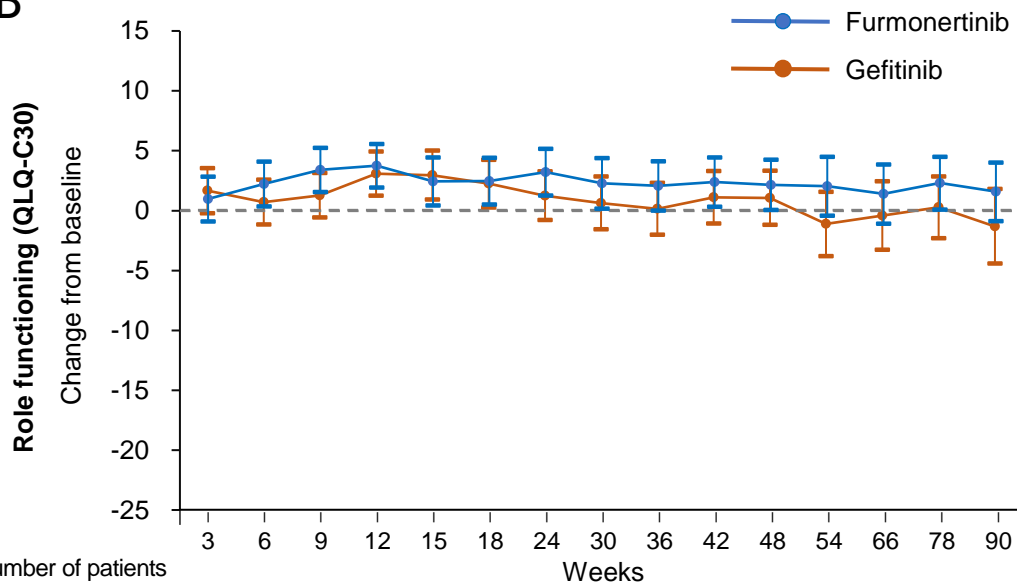
A



Number of patients

Furmonertinib	176	175	166	161	153	150	151	143	138	132	127	117	110	94	83
Gefitinib	177	175	165	158	147	147	136	124	110	101	90	80	66	49	34

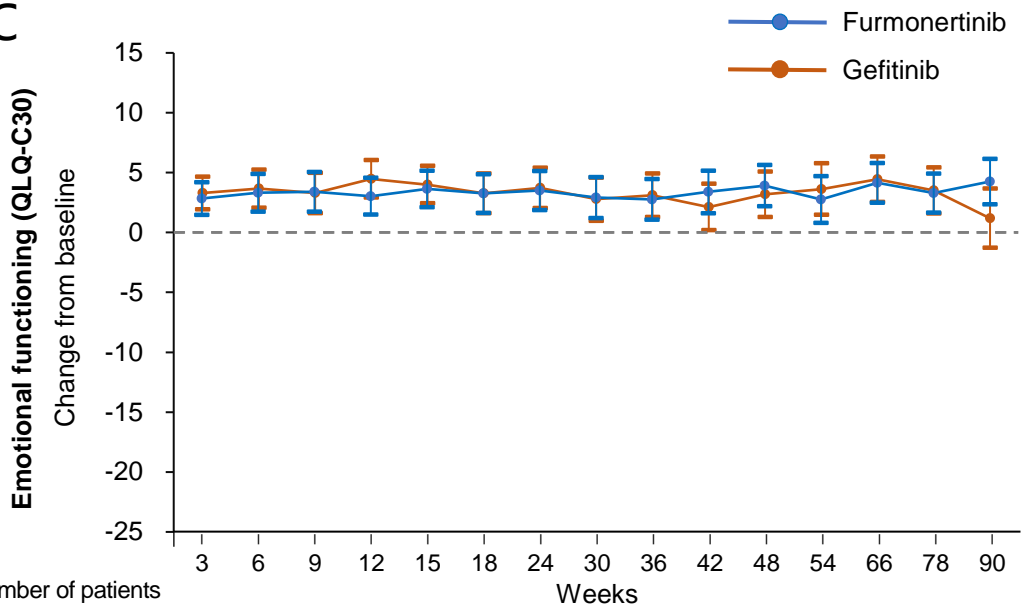
B



Number of patients

Furmonertinib	176	175	166	161	153	150	151	143	138	132	127	117	110	94	83
Gefitinib	177	175	165	158	147	147	136	124	110	101	90	80	66	49	34

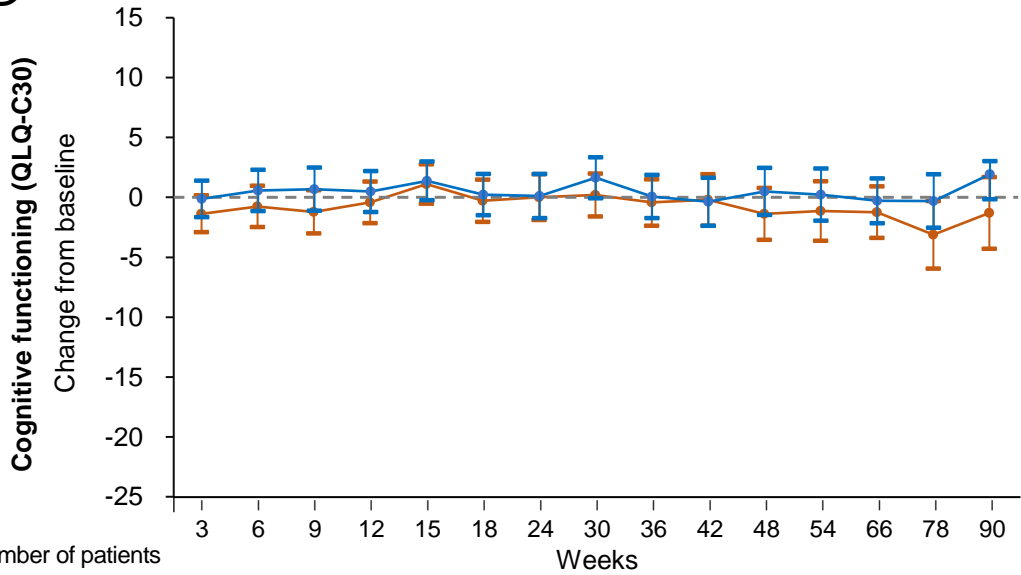
C



Number of patients

Furmonertinib	176	175	166	161	153	150	151	143	138	132	127	117	110	94	83
Gefitinib	177	175	165	158	147	147	136	124	110	101	90	80	66	49	34

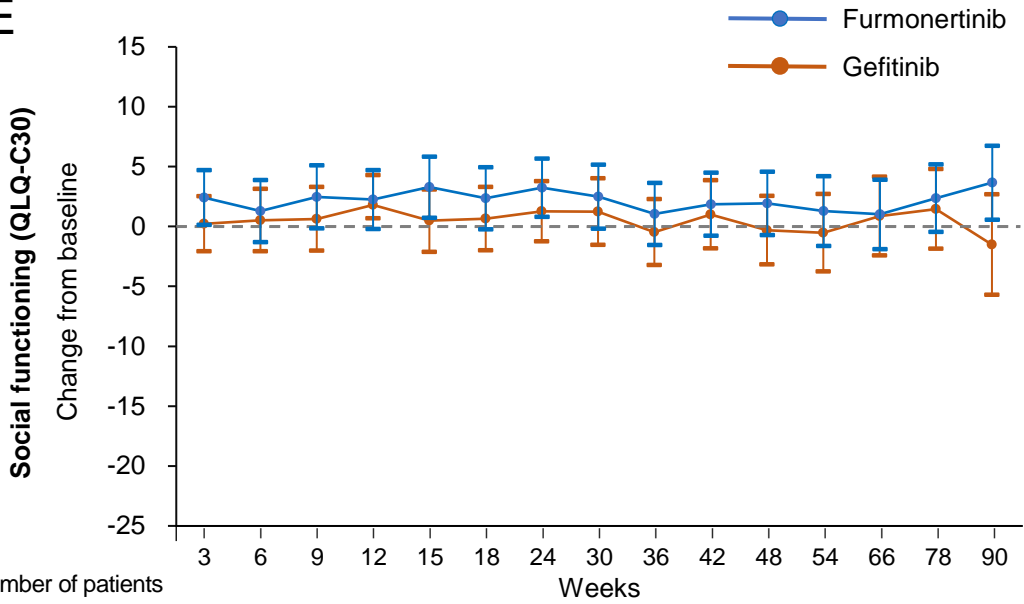
D



Number of patients

Furmonertinib	176	175	166	161	153	150	151	143	138	132	127	117	110	94	83
Gefitinib	177	175	165	158	147	147	136	124	110	101	90	80	66	49	34

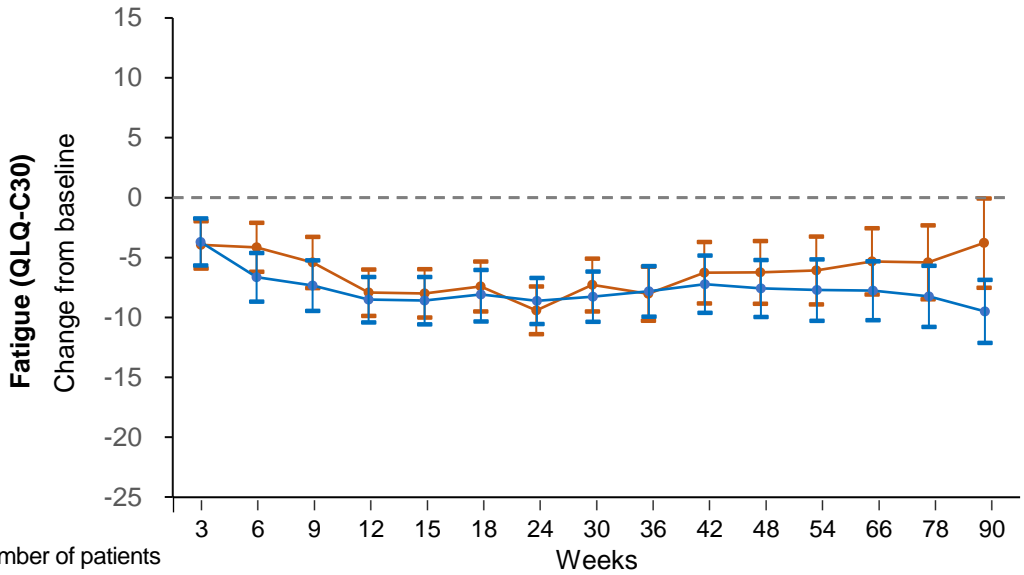
F



Number of patients

Furmonertinib	176	175	166	161	153	150	151	143	138	132	127	117	110	94	83
Gefitinib	177	175	165	158	147	147	136	124	110	101	90	80	66	49	34

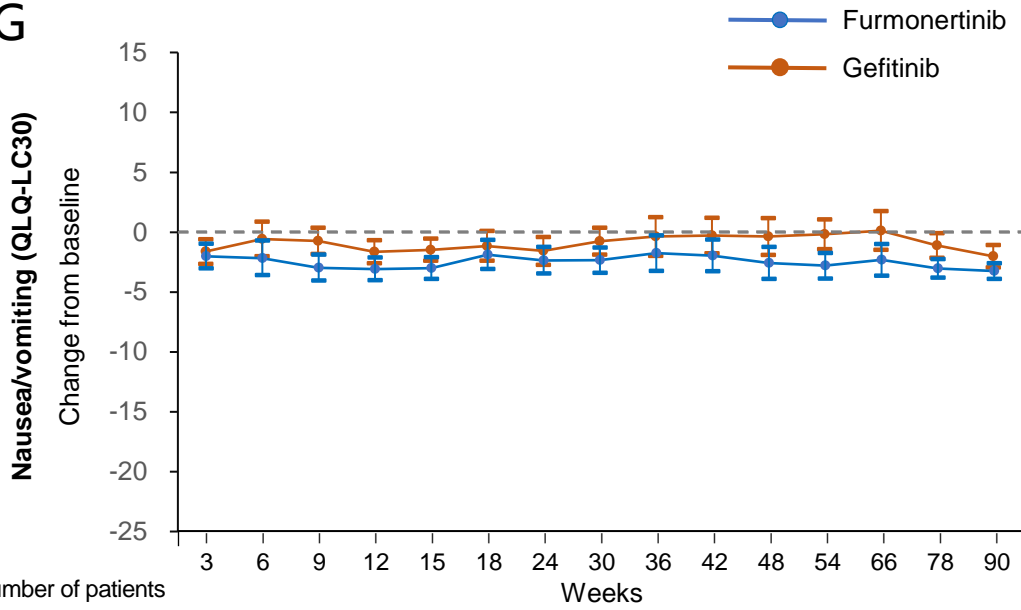
F



Number of patients

Furmonertinib	176	175	166	161	153	150	151	143	138	132	127	117	110	94	83
Gefitinib	177	175	165	158	147	147	136	124	110	101	90	80	66	49	34

G



Number of patients

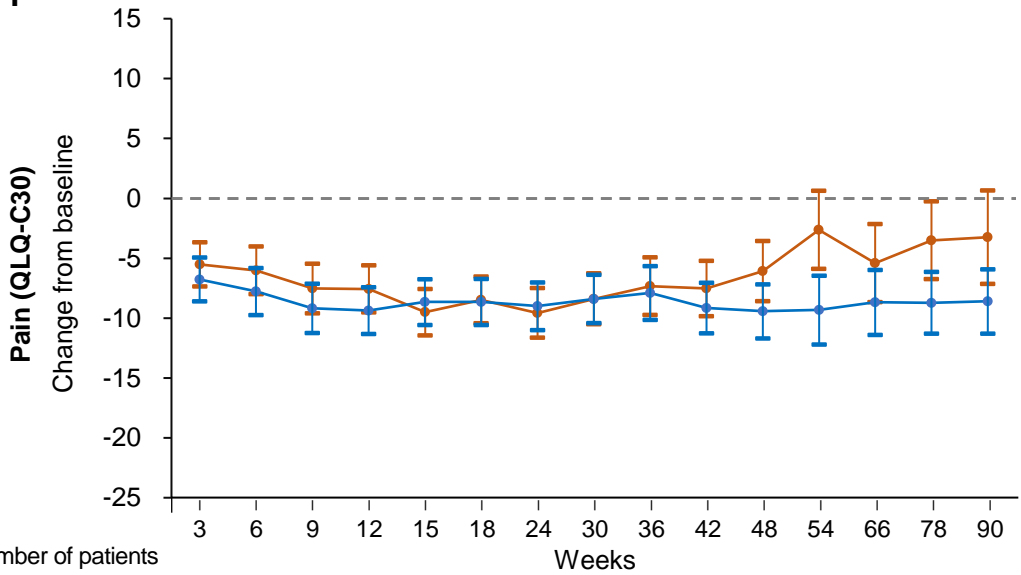
Furmonertinib

176 175 166 161 153 150 151 143 138 132 127 117 110 94 83

Gefitinib

177 175 165 158 147 147 136 124 110 101 90 80 66 49 34

H



Number of patients

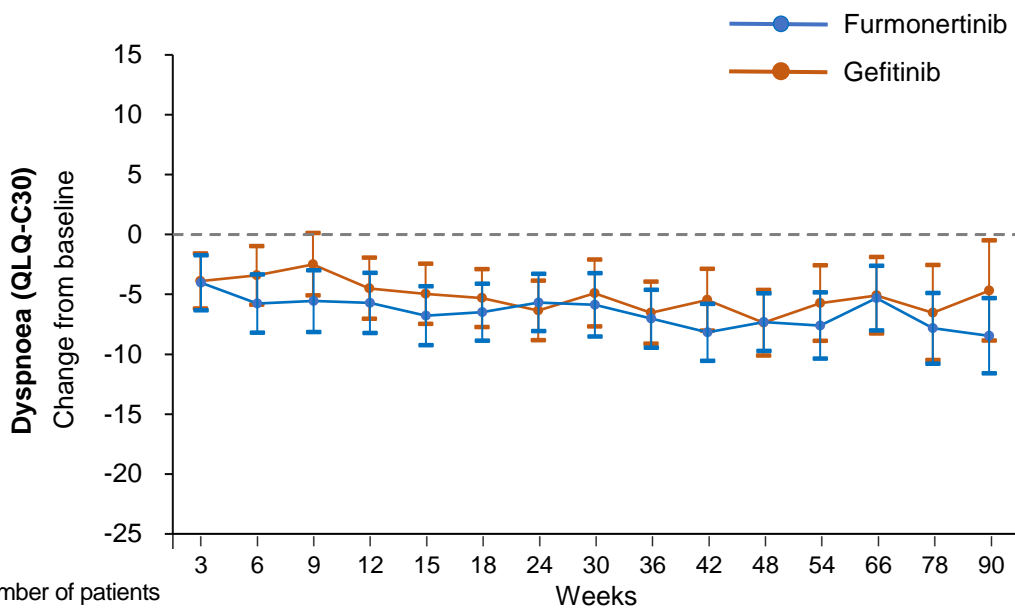
Furmonertinib

176 175 166 161 153 150 151 143 138 132 127 117 110 94 83

Gefitinib

177 175 165 158 147 147 136 124 110 101 90 80 66 49 34

I

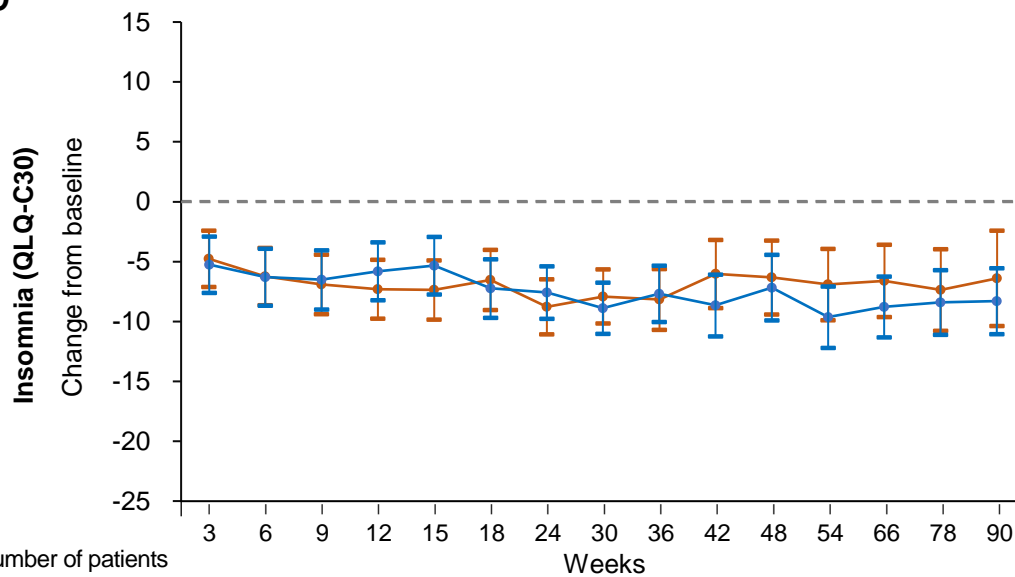


Number of patients

Furmonertinib

Gefitinib

J

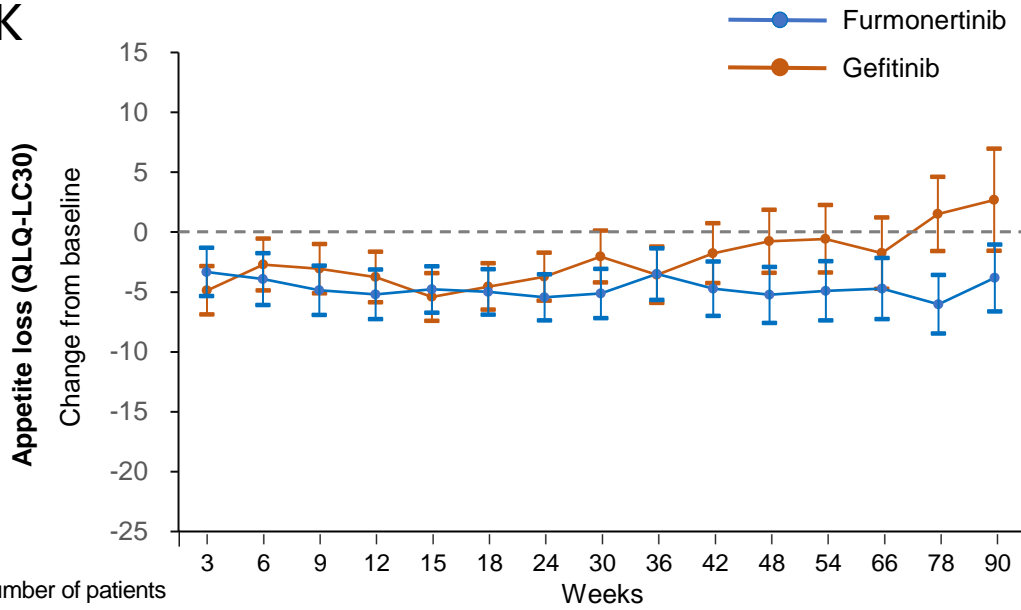


Number of patients

Furmonertinib

Gefitinib

K



Number of patients

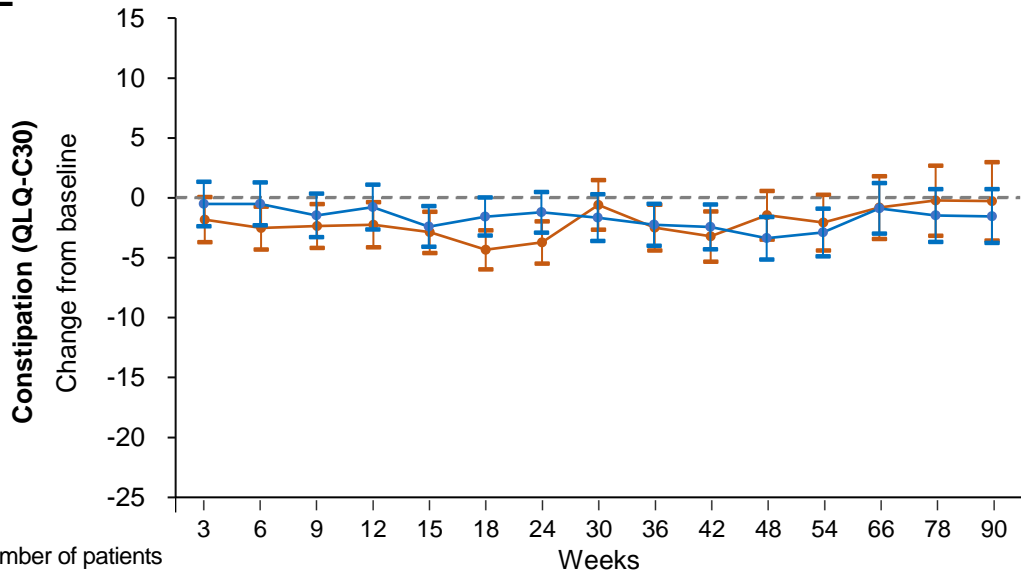
Furmonertinib

176 175 166 161 153 150 151 143 138 132 127 117 110 94 83

Gefitinib

177 175 165 158 147 147 136 124 110 101 90 80 66 49 34

L



Number of patients

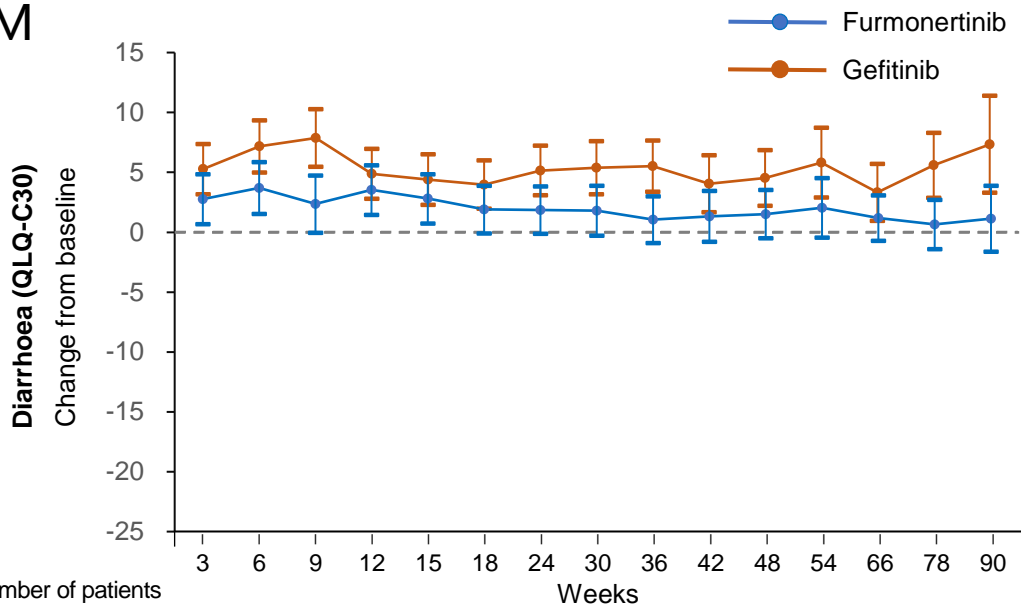
Furmonertinib

176 175 166 161 153 150 151 143 138 132 127 117 110 94 83

Gefitinib

177 175 165 158 147 147 136 124 110 101 90 80 66 49 34

M



Number of patients

Furmonertinib

176

175

166

161

153

150

151

143

138

132

127

117

110

94

83

Gefitinib

177

175

165

158

147

147

136

124

110

101

90

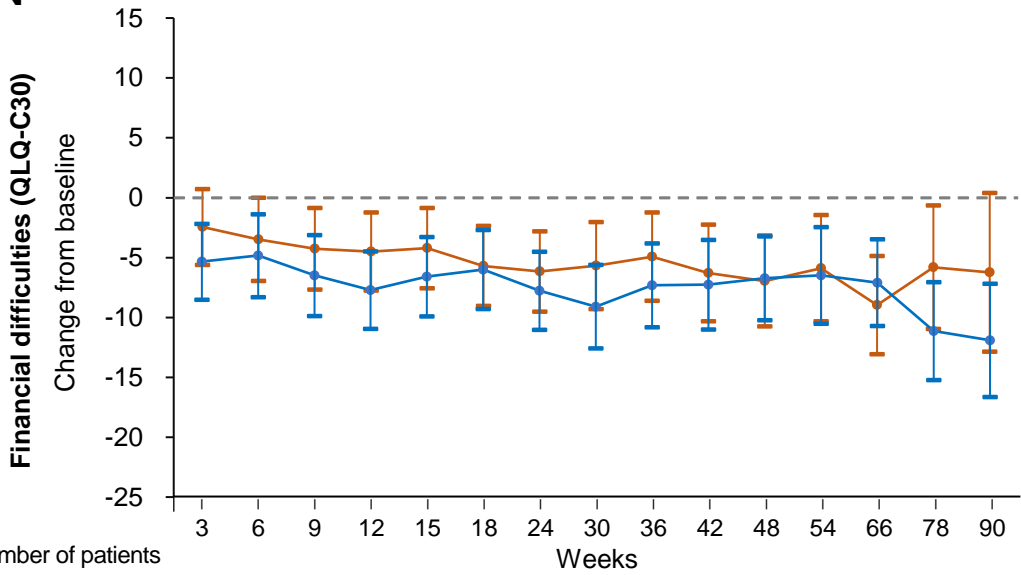
80

66

49

34

N



Number of patients

Furmonertinib

176

175

166

161

153

150

151

143

138

132

127

117

110

94

83

Gefitinib

177

175

165

158

147

147

136

124

110

101

90

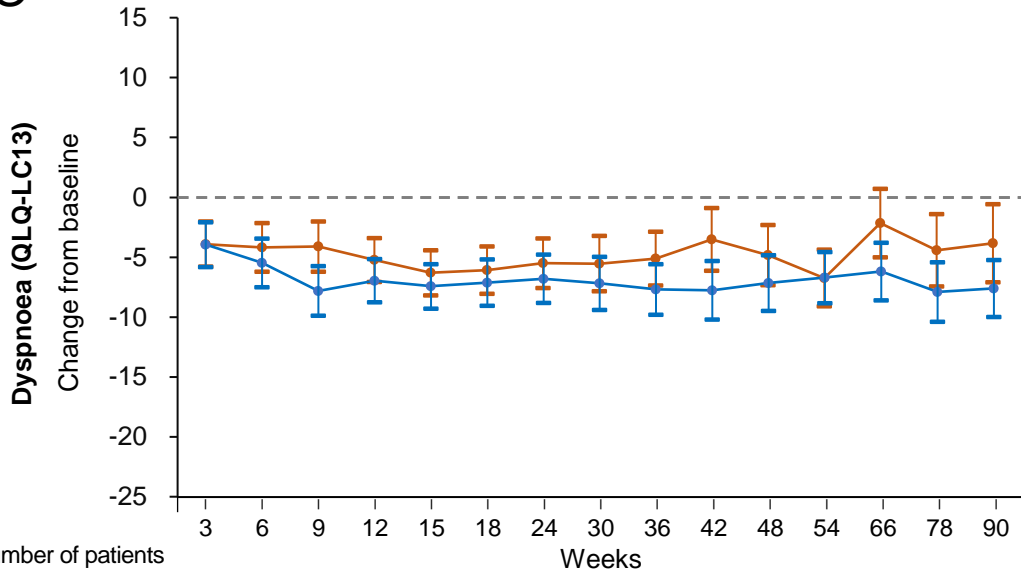
80

66

49

34

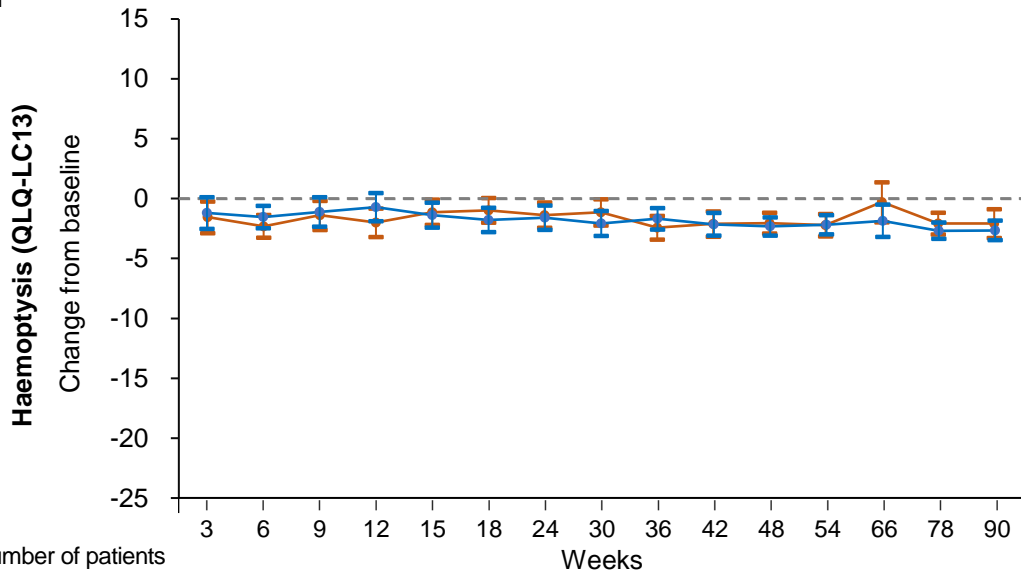
O



Number of patients

Furmonertinib	176	175	166	161	153	150	151	143	138	132	127	117	110	94	83
Gefitinib	177	175	165	158	147	146	136	123	110	101	90	79	66	49	34

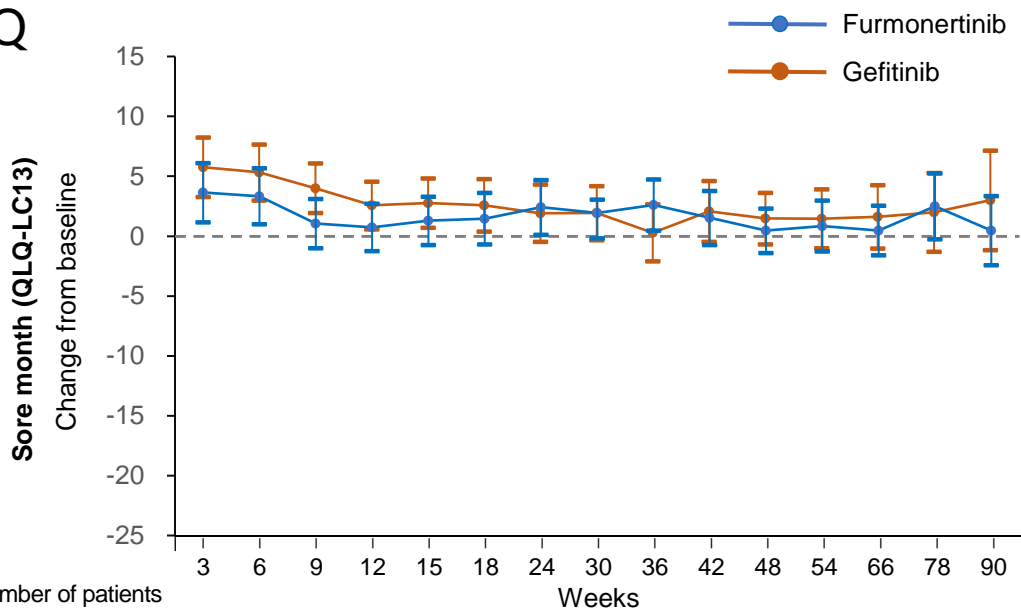
P



Number of patients

Furmonertinib	176	175	166	161	153	150	151	143	138	132	127	117	110	94	83
Gefitinib	177	175	165	158	147	146	136	123	110	101	90	79	66	49	34

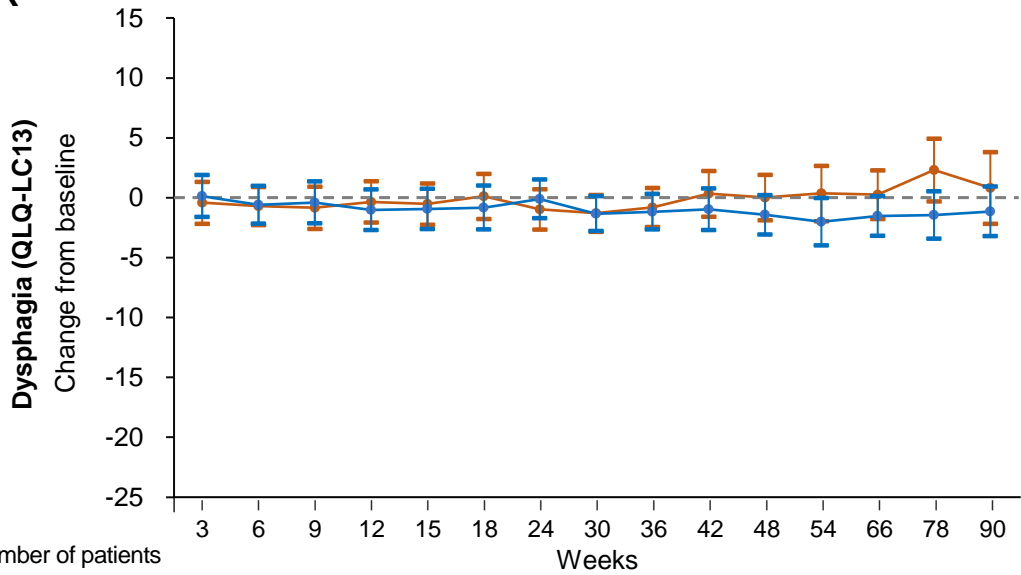
Q



Number of patients

Furmonertinib	176	175	166	161	153	150	151	143	138	132	127	117	110	94	83
Gefitinib	177	175	165	158	147	146	136	123	110	101	90	79	66	49	34

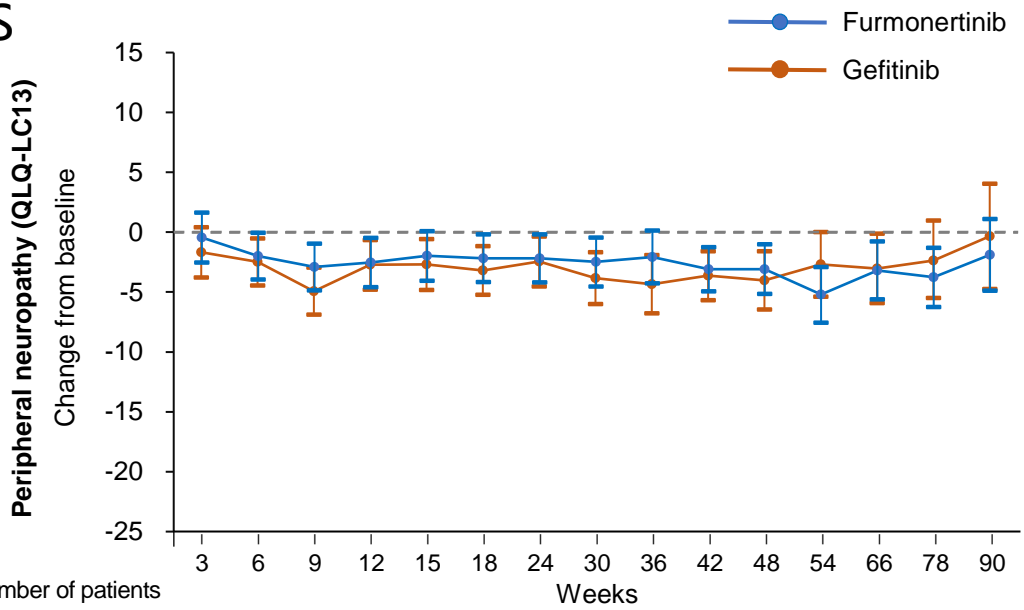
R



Number of patients

Furmonertinib	176	175	166	161	153	150	151	143	138	132	127	117	110	94	83
Gefitinib	177	175	165	158	147	146	136	123	110	101	90	79	66	49	34

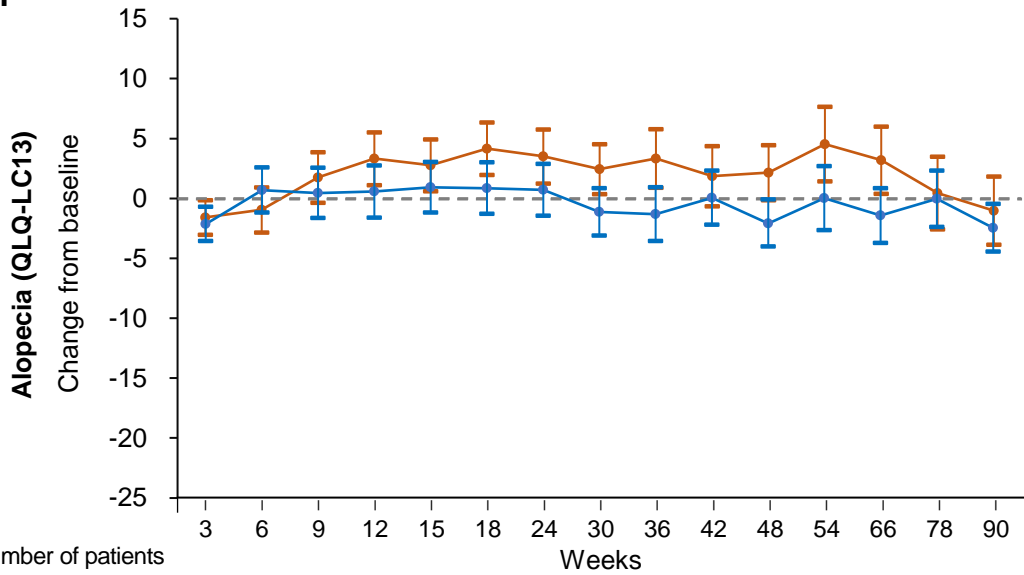
S



Number of patients

Furmonertinib	176	175	166	161	153	150	151	143	138	132	127	117	110	94	83
Gefitinib	177	175	165	158	147	146	136	123	110	101	90	79	66	49	34

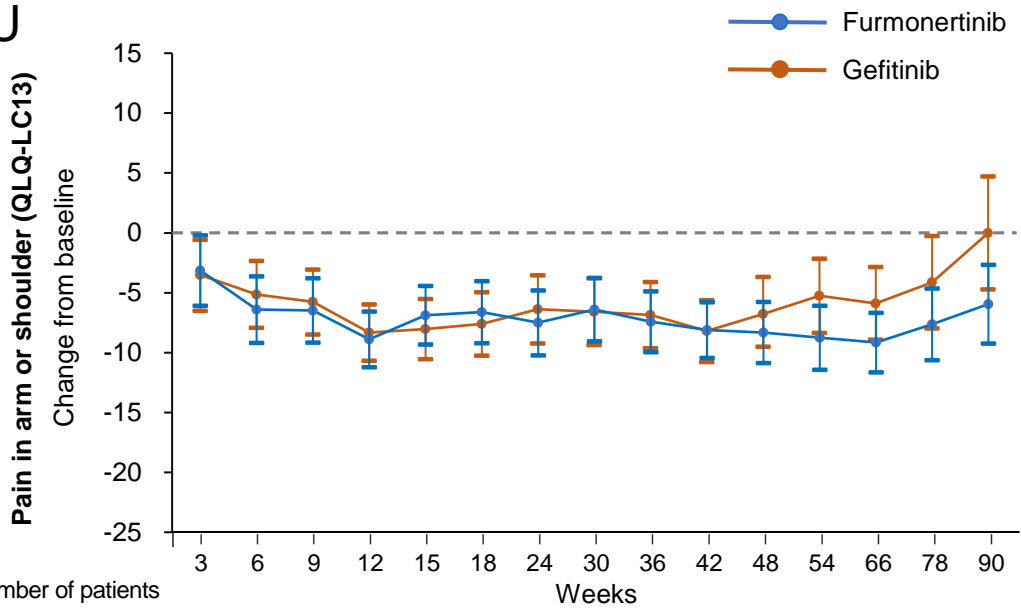
T



Number of patients

Furmonertinib	176	175	166	161	153	150	151	143	138	132	127	117	110	94	83
Gefitinib	177	175	165	158	147	146	136	123	110	101	90	79	66	49	34

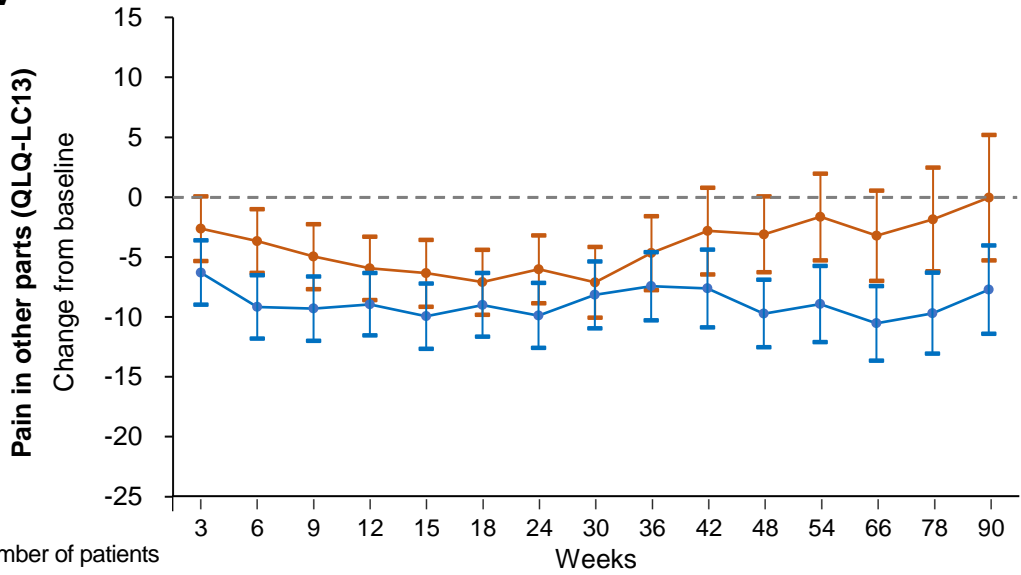
U



Number of patients

Furmonertinib	176	175	166	161	153	150	151	143	138	132	127	117	110	94	83
Gefitinib	177	175	165	158	147	146	136	123	110	101	90	79	66	49	34

V



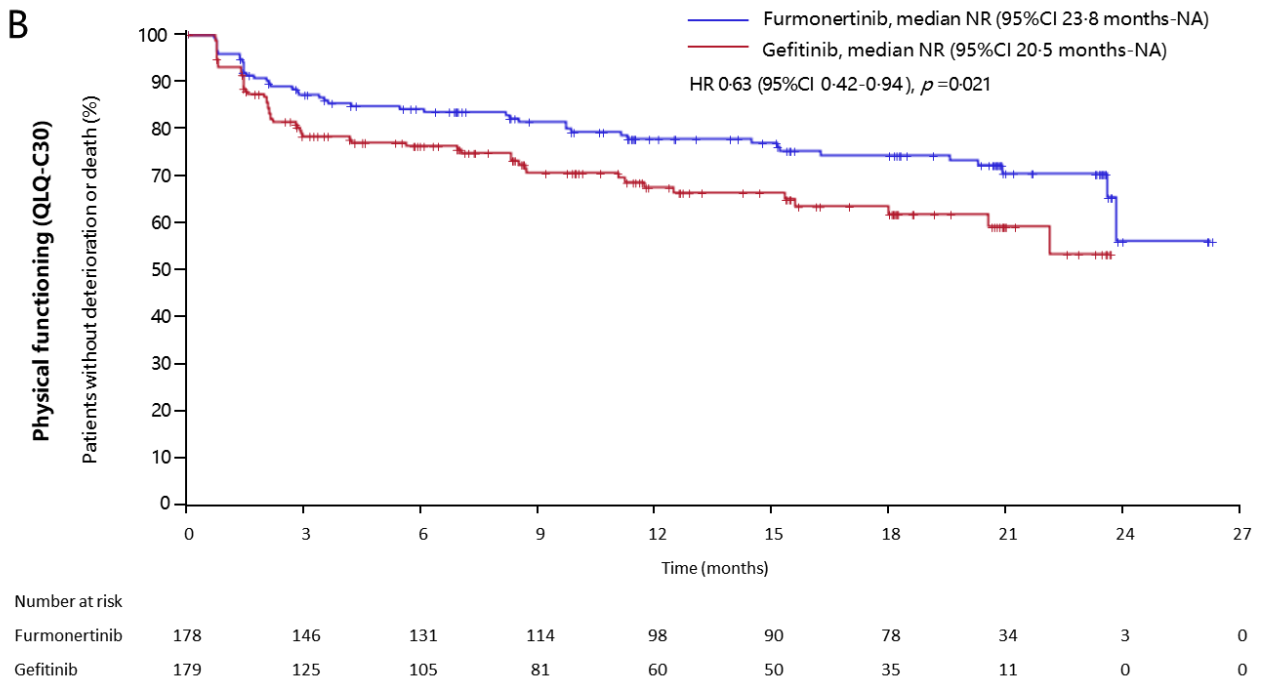
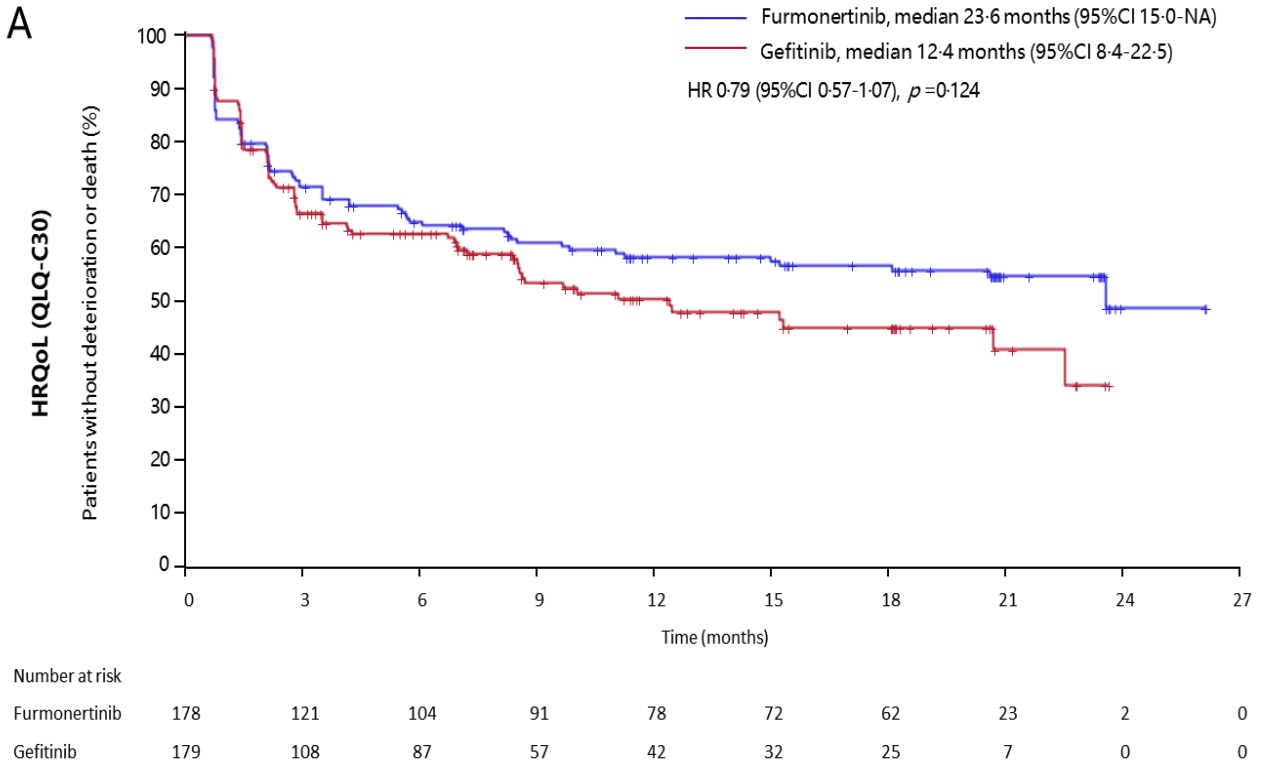
Number of patients

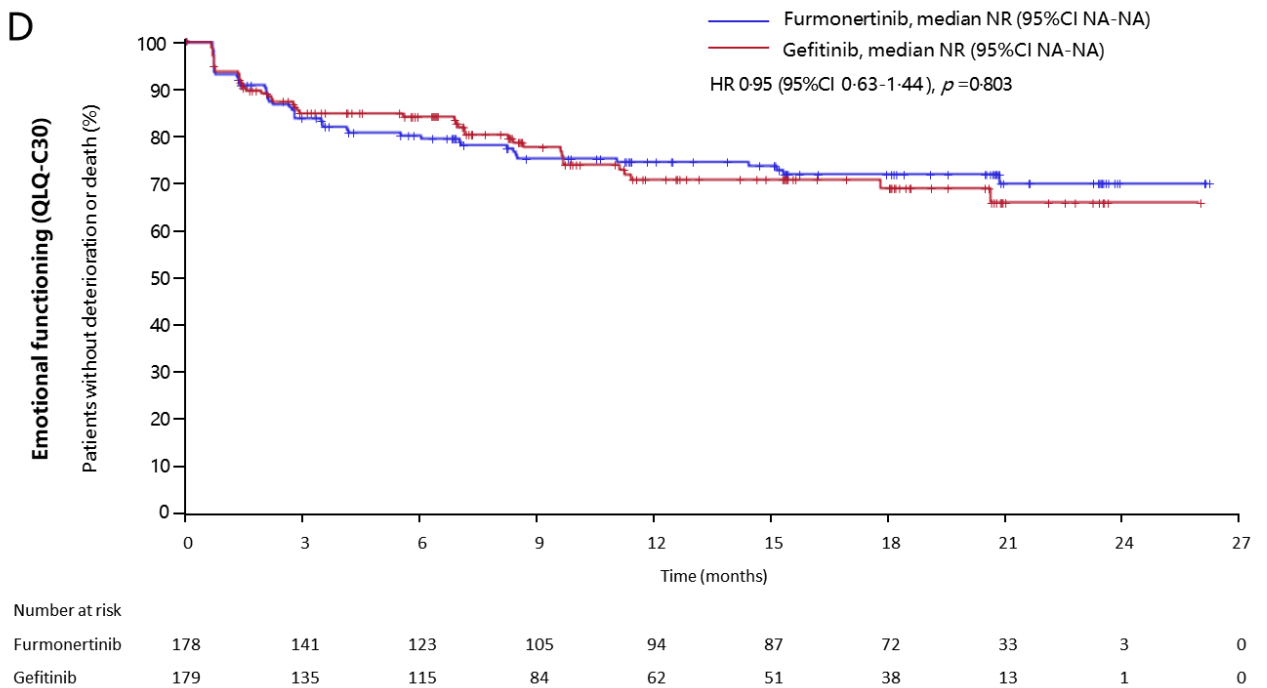
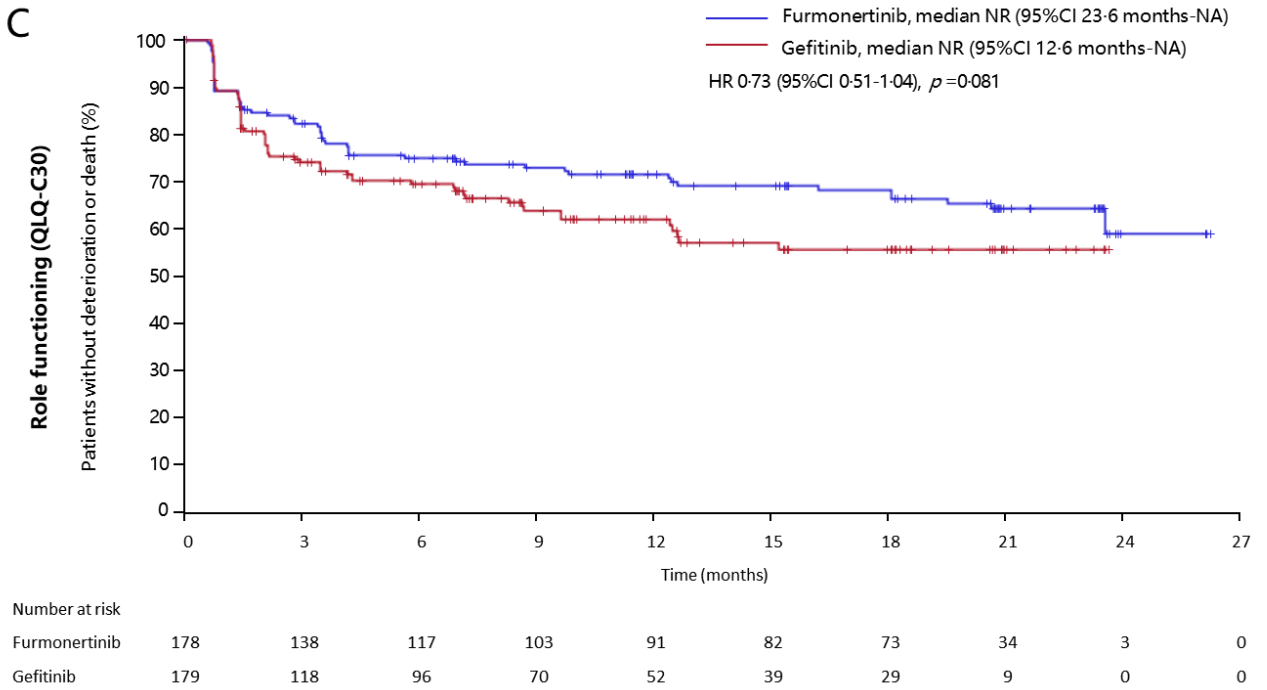
Furmonertinib	176	175	166	161	153	150	151	143	138	132	127	117	110	94	83
Gefitinib	177	175	165	158	147	146	136	123	110	101	90	79	66	49	34

Supplementary Figure 2: Kaplan-Meier curves of time to deterioration

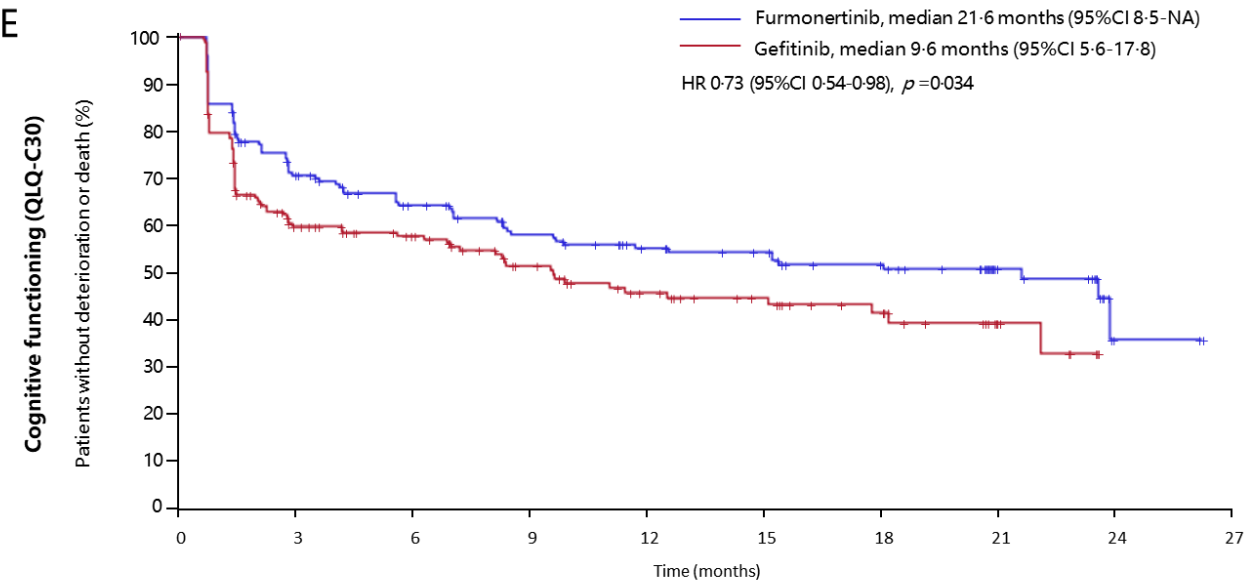
Data are (A) HRQoL, (B) physical functioning, (C) role functioning, (D) emotional functioning, (E) cognitive functioning, (F) social functioning, (G) fatigue, (H) nausea/vomiting, (I) pain, (J) dyspnoea, (K) insomnia, (L) appetite loss, (M) constipation, (N) diarrhoea, (O) financial difficulties; all from the EORTC QLQ-C30, and (P) dyspnoea, (Q) cough, (R) haemoptysis, (S) sore mouth, (T) dysphagia, (U) peripheral neuropathy, (V) alopecia, (W) chest pain, (X) pain in arm or shoulder, (Y) pain in other parts; all from the EORTC QLQ-LC13.

HRQoL=health-related quality of life. QLQ-C30=Quality-of-Life Questionnaire Core 30. QLQ-LC13=Quality-of-Life Questionnaire Lung cancer 13. NR=not reached. NA=not available. HR=hazard ratio. CI=confidence interval..



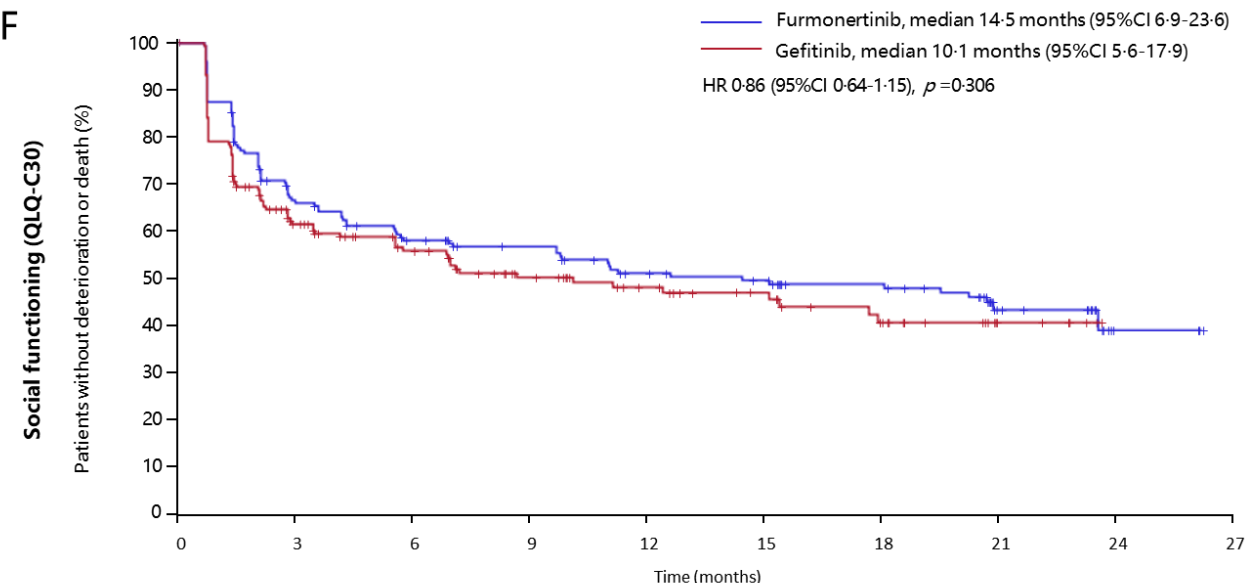


F

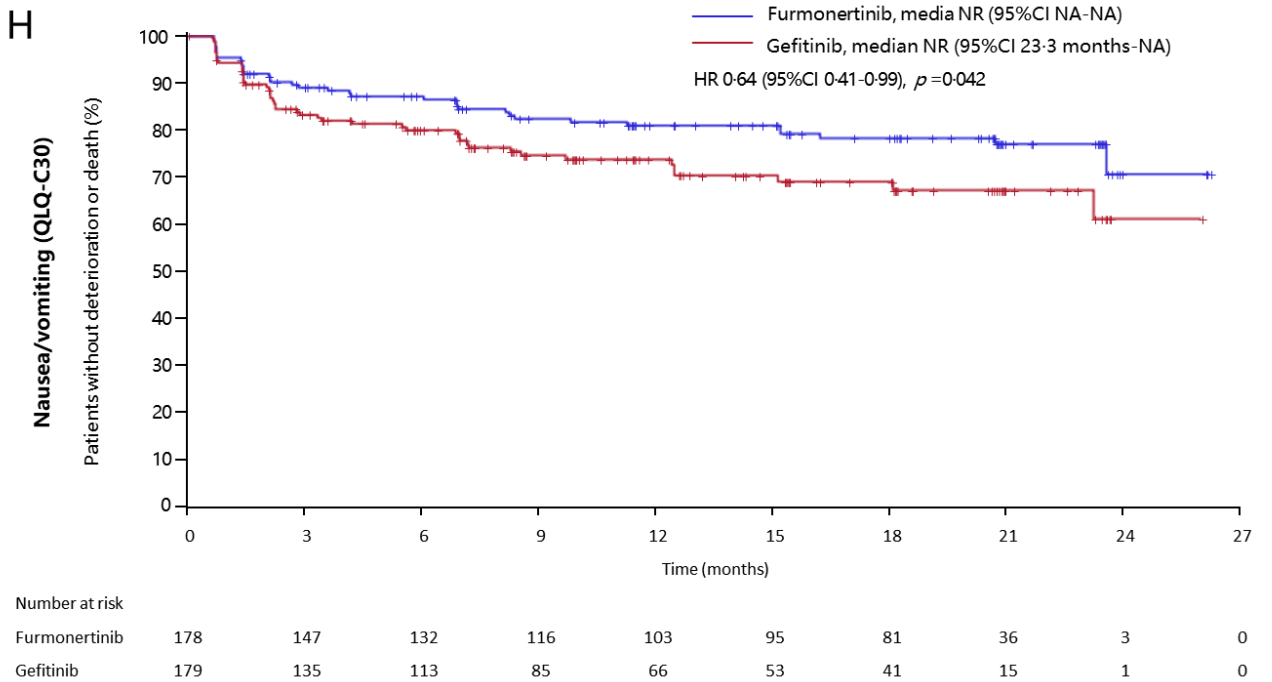
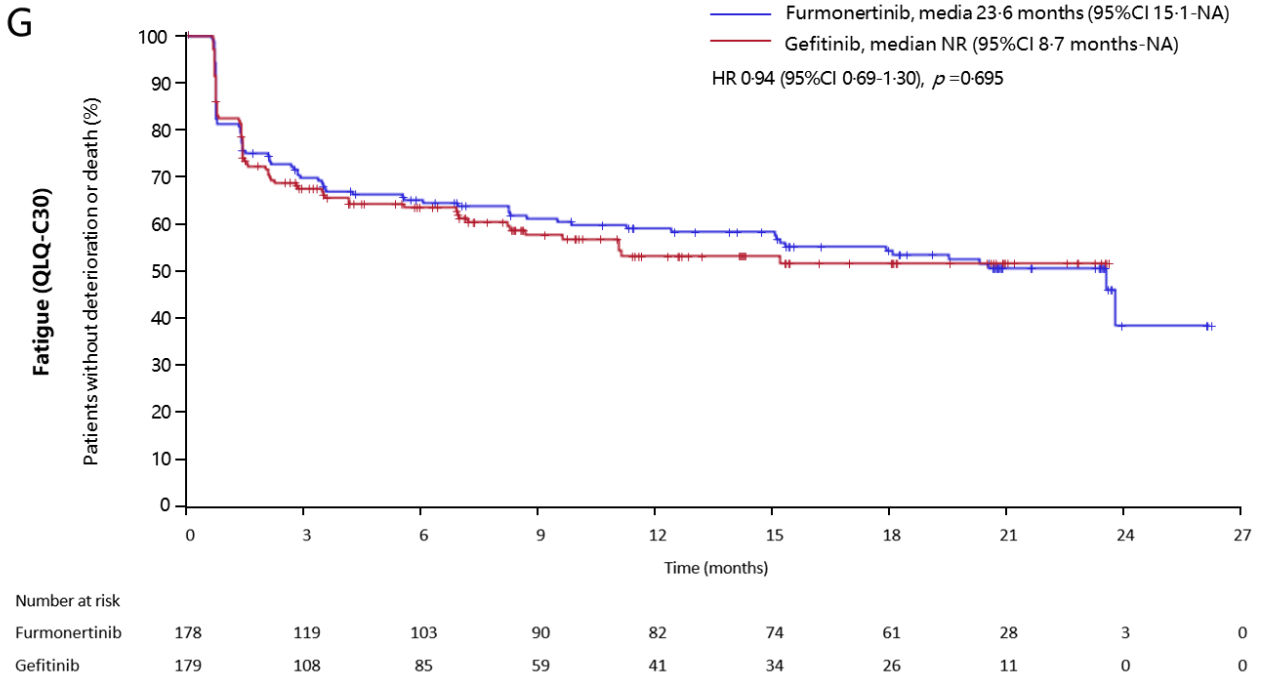


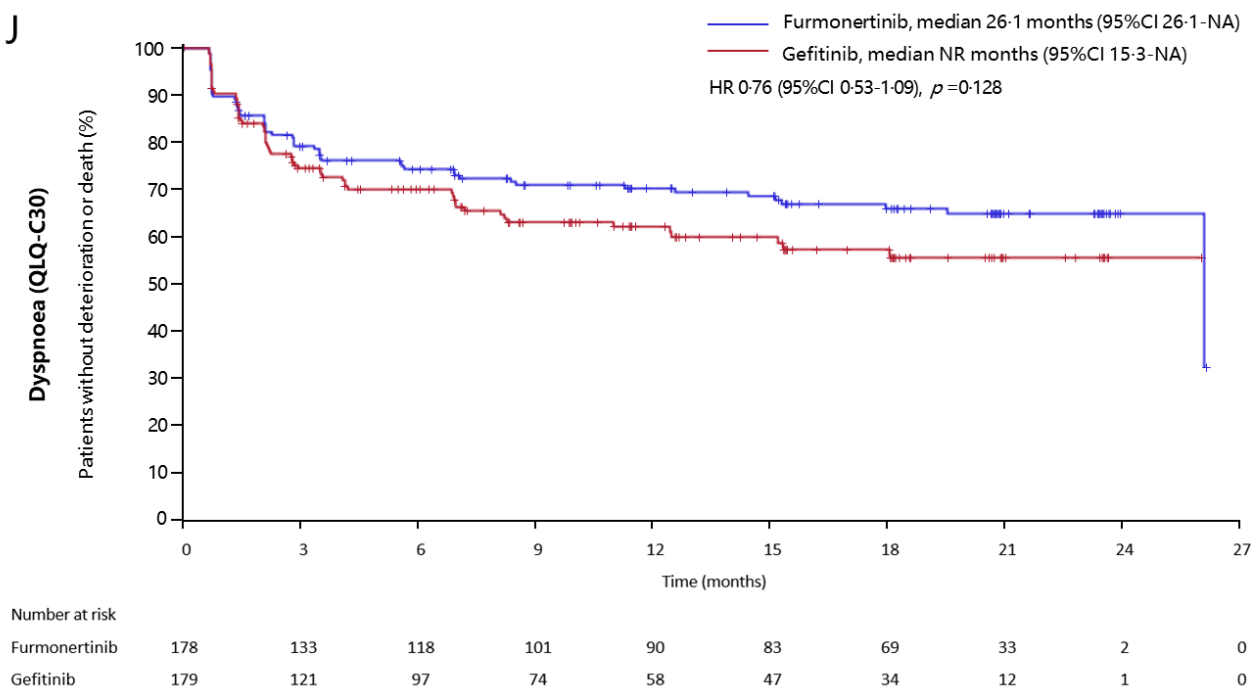
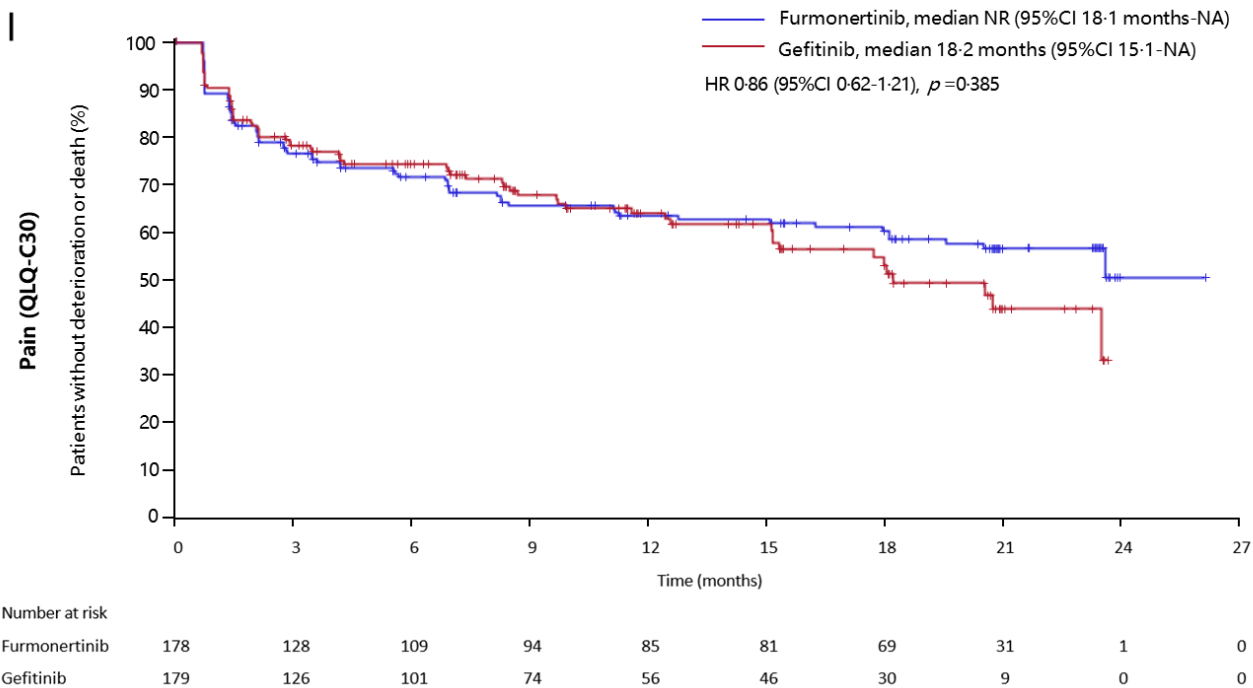
Number at risk										
Furmonertinib	178	116	97	82	70	64	54	24	2	0
Gefitinib	179	94	78	58	42	33	23	7	0	0

F

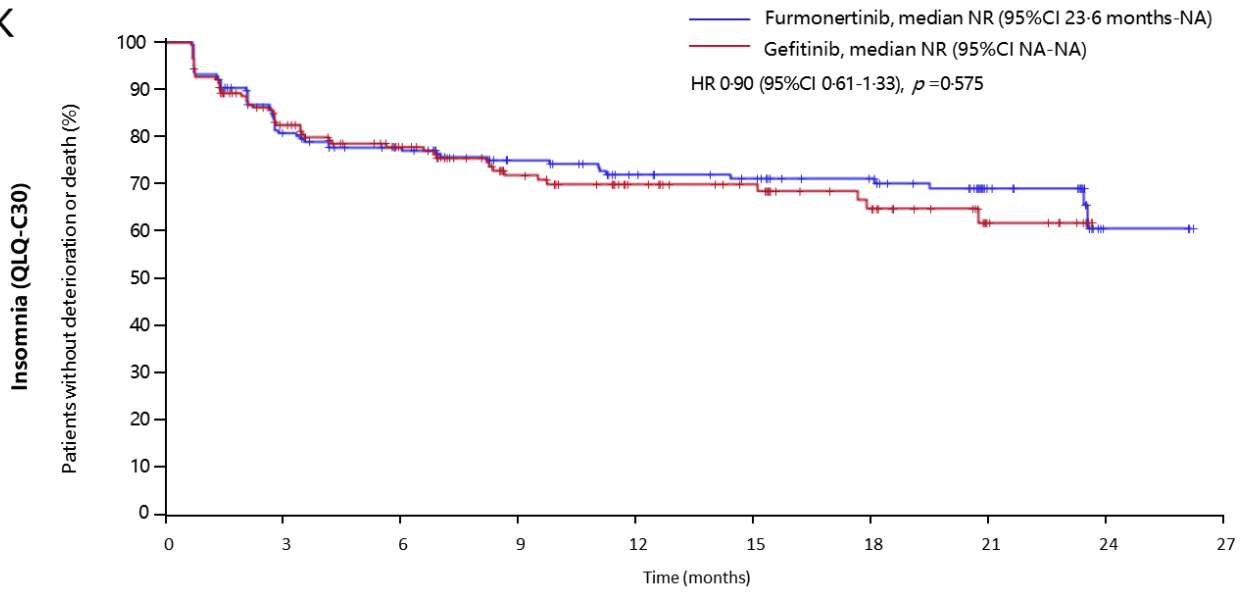


Number at risk										
Furmonertinib	178	110	92	82	69	64	55	23	3	0
Gefitinib	179	95	74	55	43	33	23	7	0	0





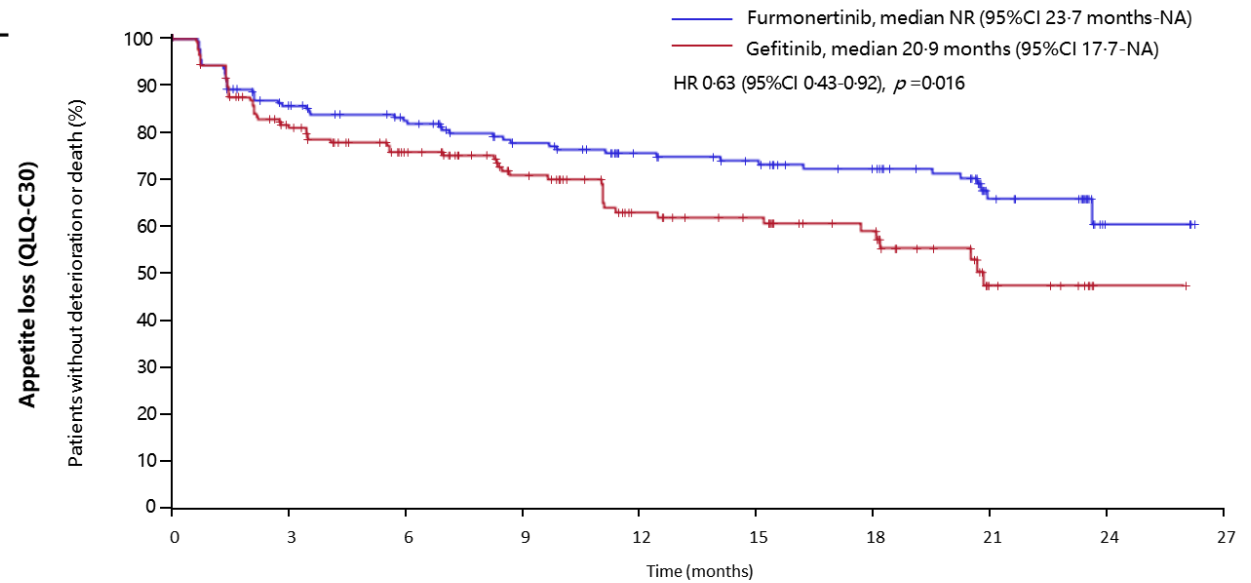
K



Number at risk

Furmonertinib	178	133	119	103	90	83	71	32	3	0
Gefitinib	179	130	102	76	58	49	35	15	0	0

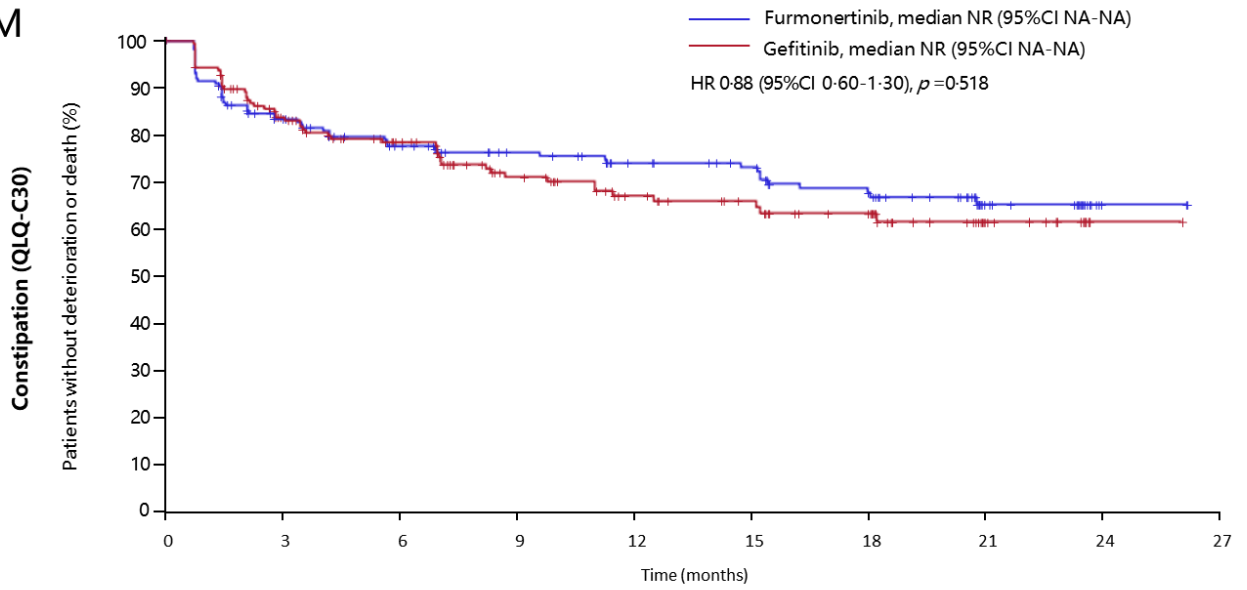
L



Number at risk

Furmonertinib	178	142	127	110	96	88	77	37	3	0
Gefitinib	179	132	106	81	57	50	36	12	1	0

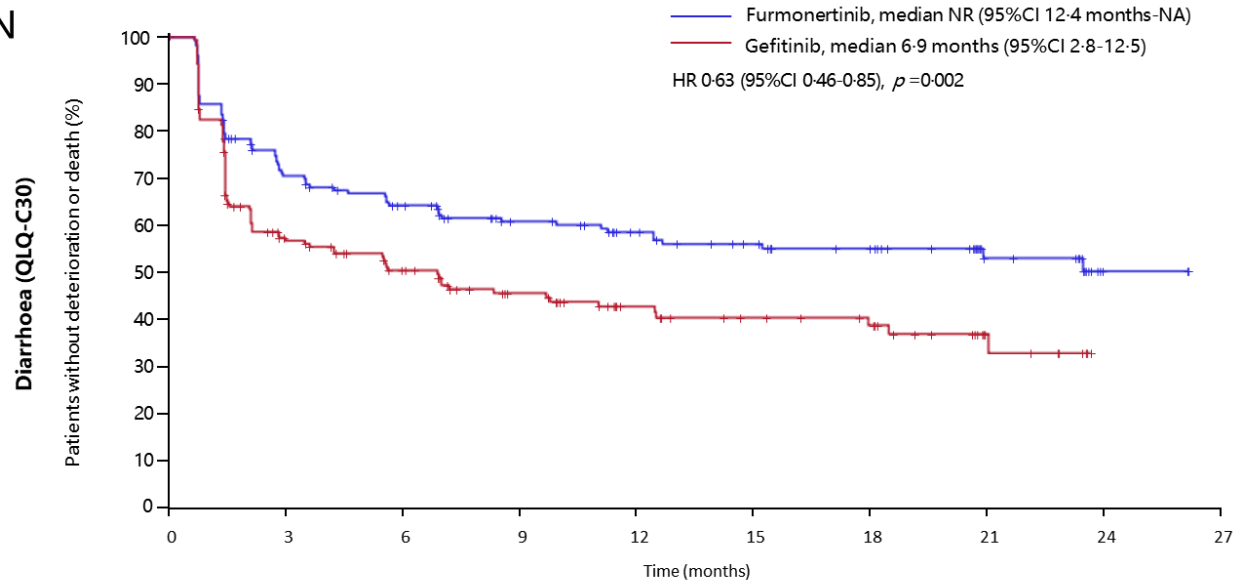
M



Number at risk

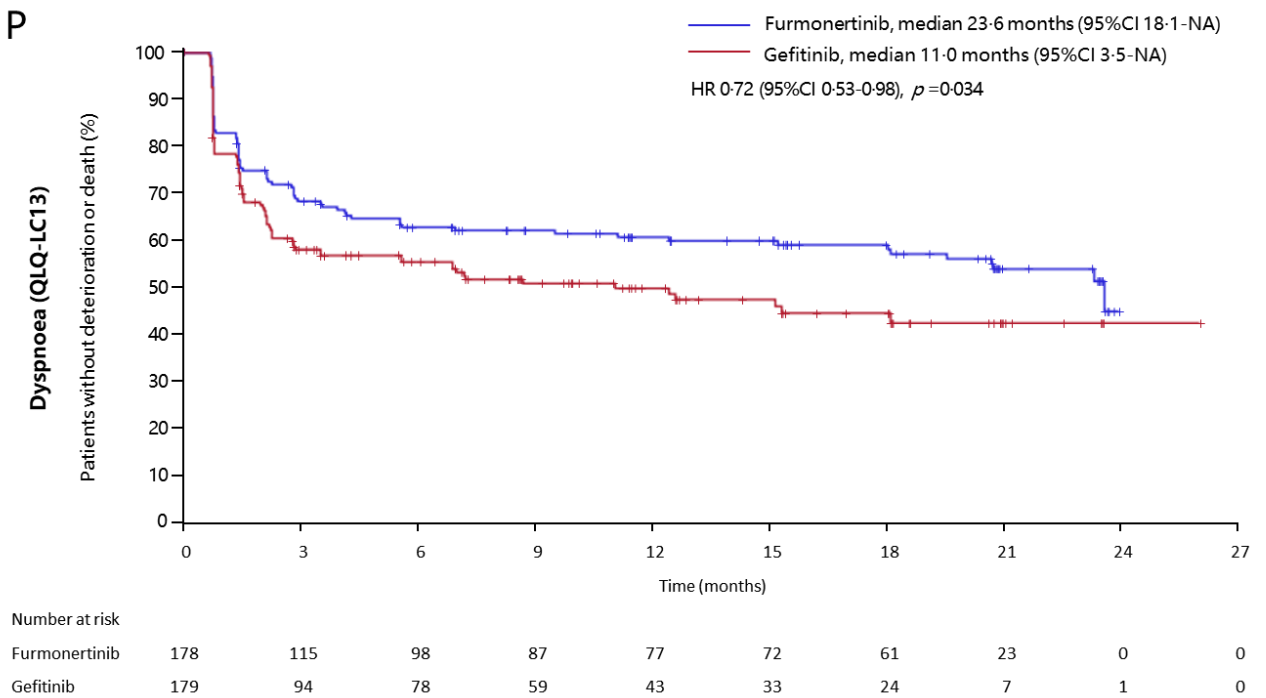
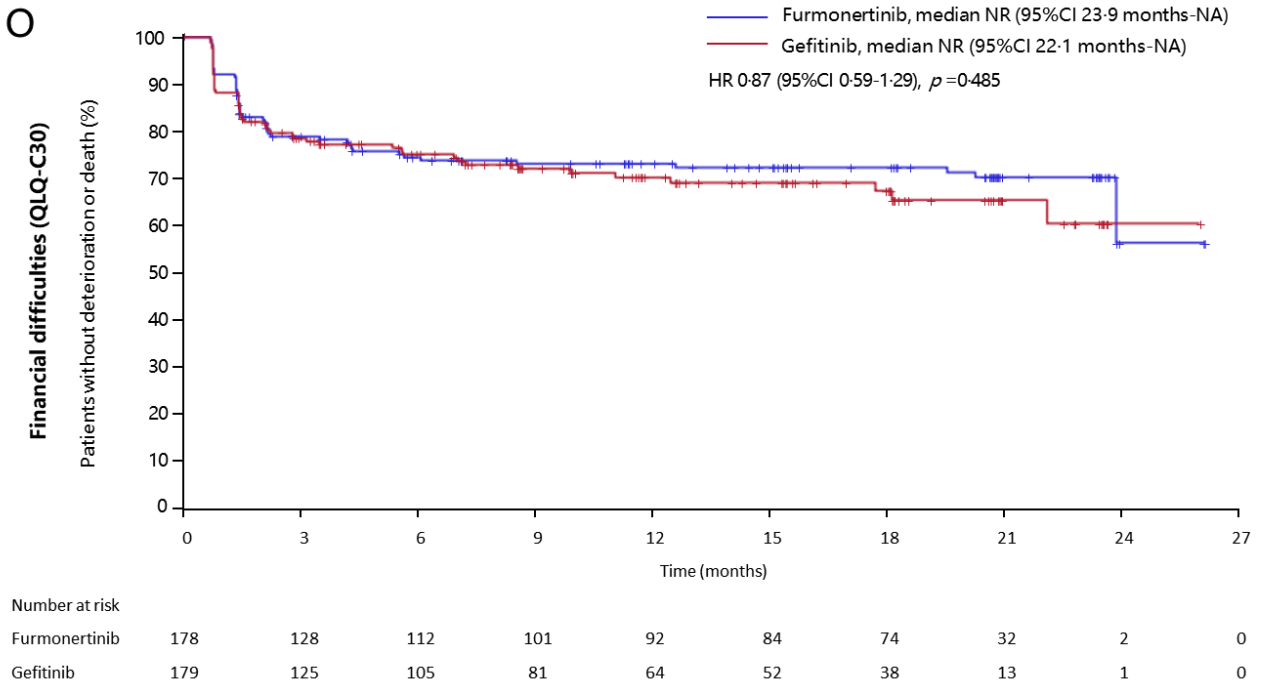
Furmonertinib	178	136	117	102	91	85	70	31	2	0
Gefitinib	179	132	104	77	60	51	40	16	1	0

N

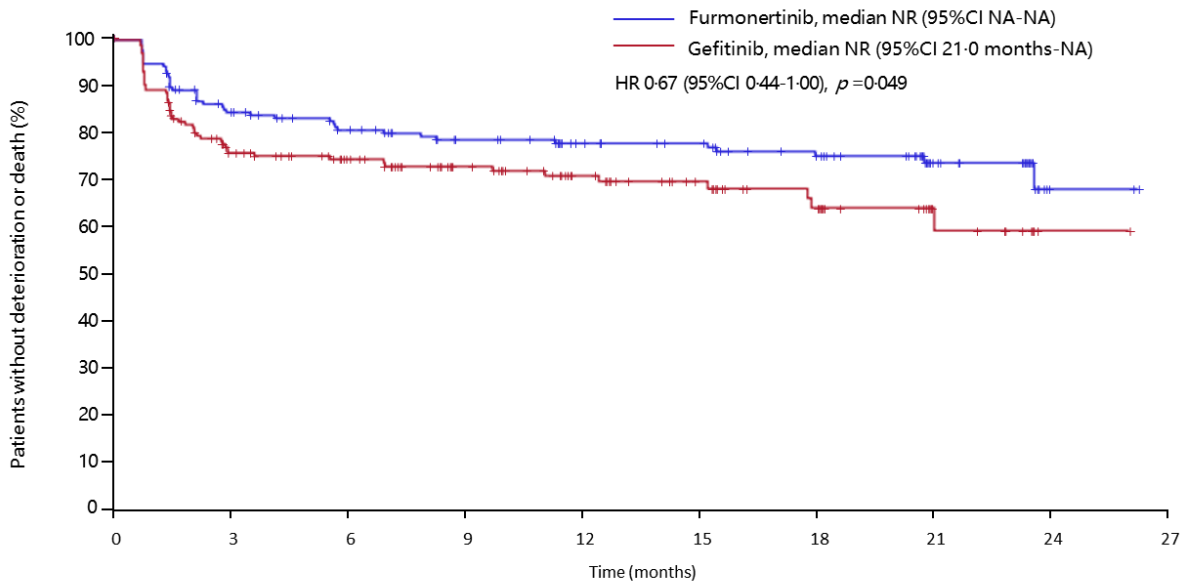


Number at risk

Furmonertinib	178	116	99	82	71	61	52	25	2	0
Gefitinib	179	88	67	50	36	29	24	9	0	0



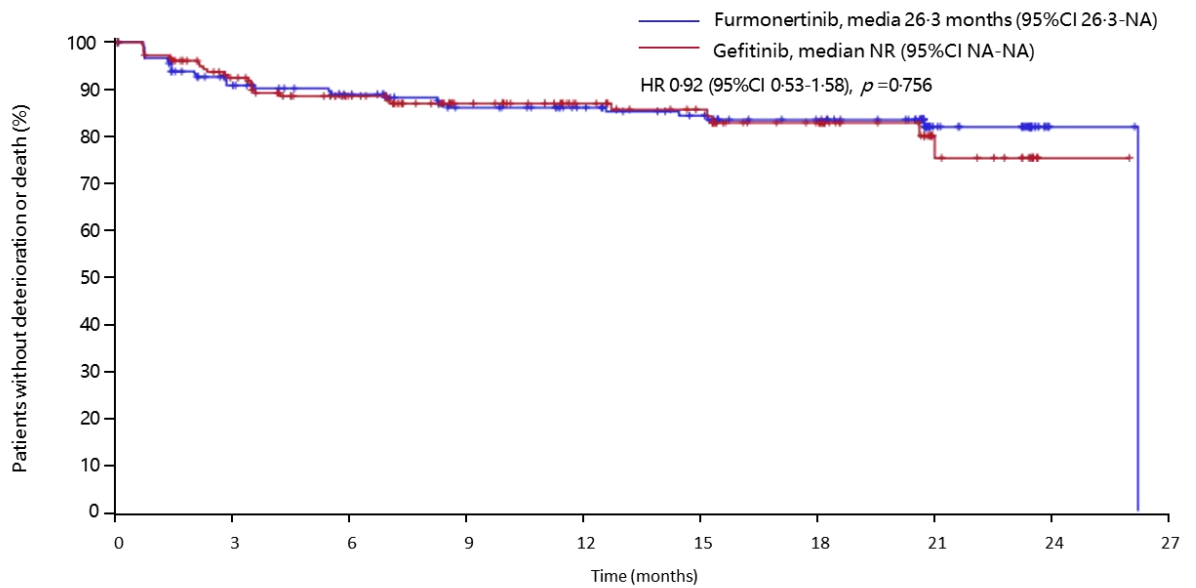
Q



Number at risk

Furmonertinib	178	140	123	109	97	91	77	35	2	0
Gefitinib	179	120	98	78	60	45	31	13	1	0

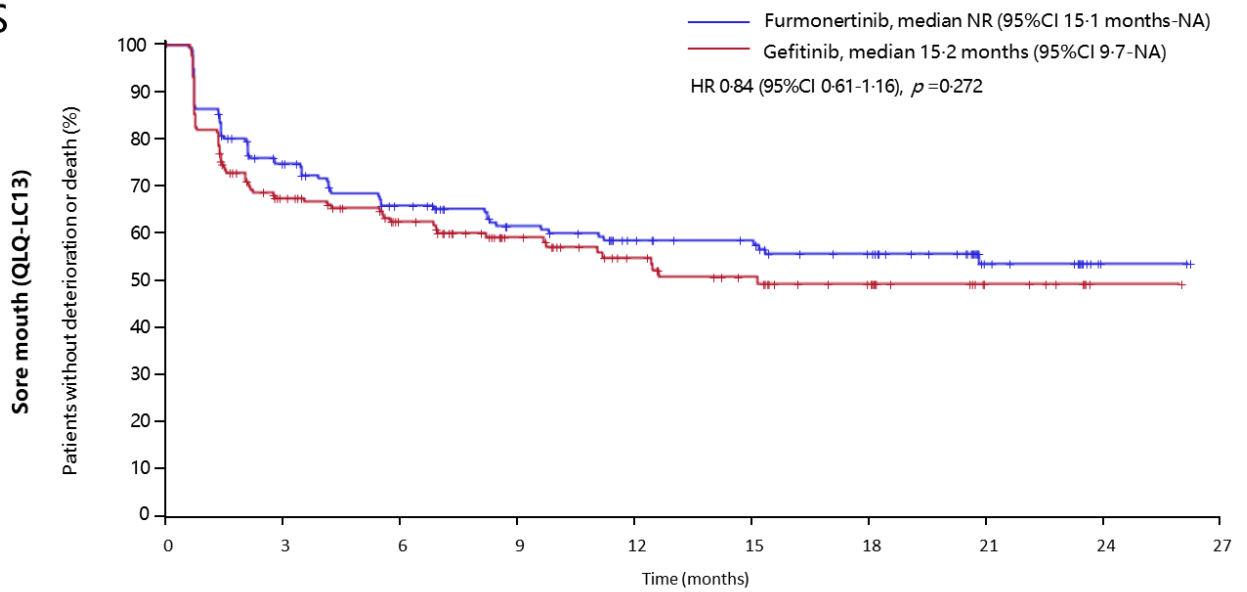
R



Number at risk

Furmonertinib	178	149	135	117	106	96	84	37	2	0
Gefitinib	179	147	117	91	72	61	45	17	1	0

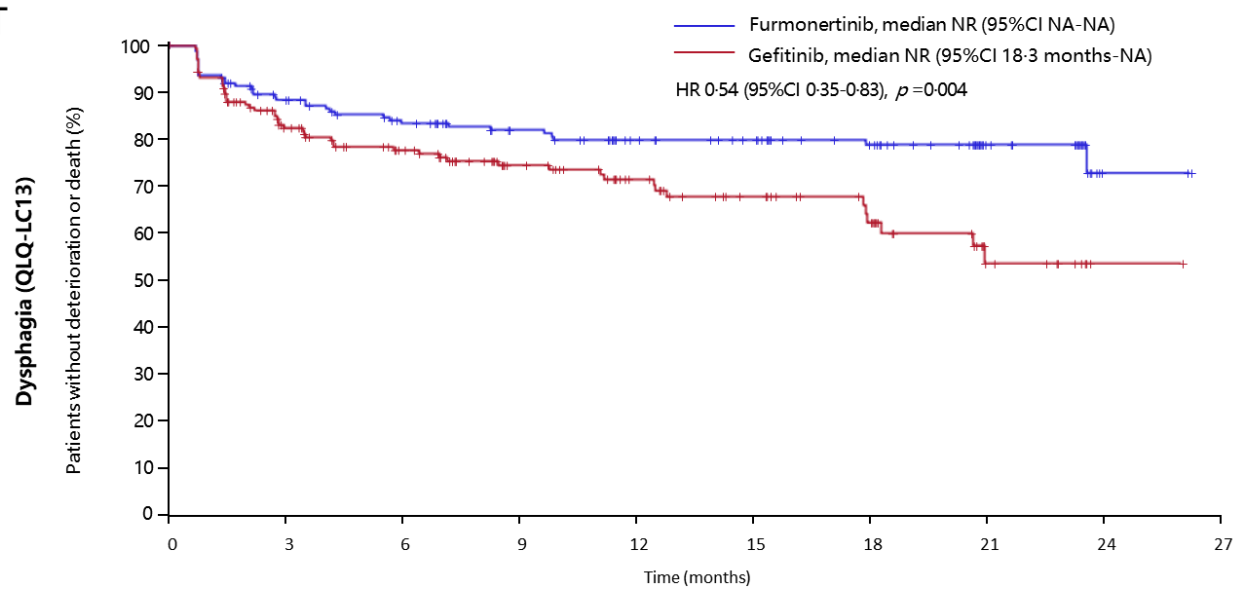
S



Number at risk

Furmonertinib	178	122	98	81	69	63	53	22	2	0
Gefitinib	179	105	79	58	43	33	23	9	1	0

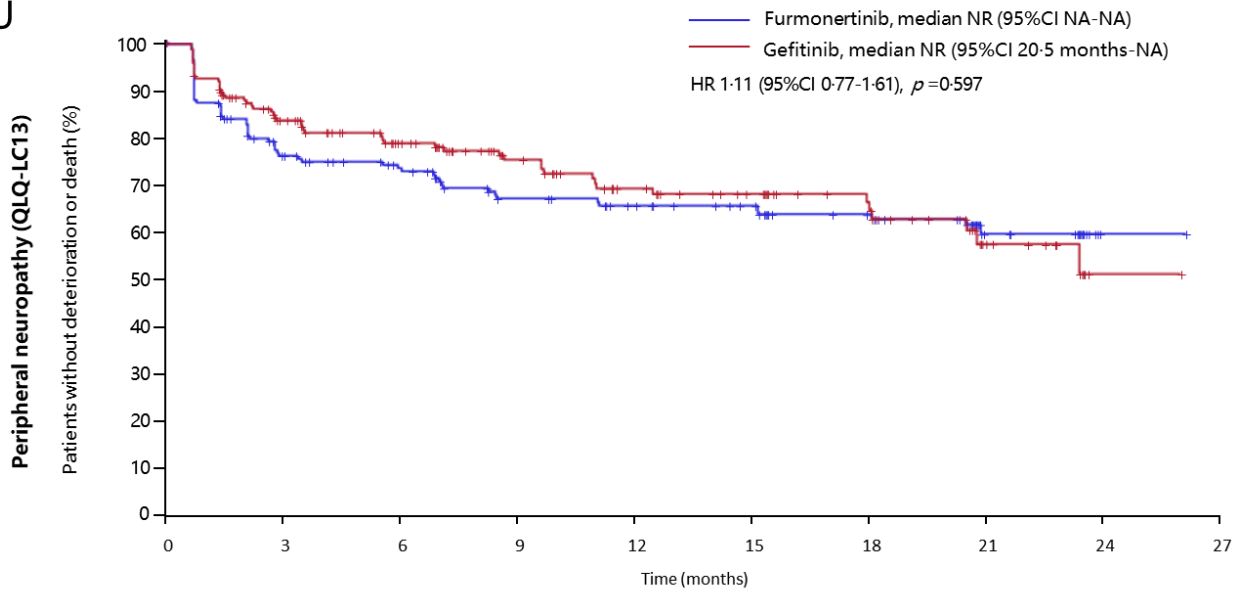
T



Number at risk

Furmonertinib	178	146	129	114	100	93	80	37	2	0
Gefitinib	179	128	106	80	61	46	34	13	1	0

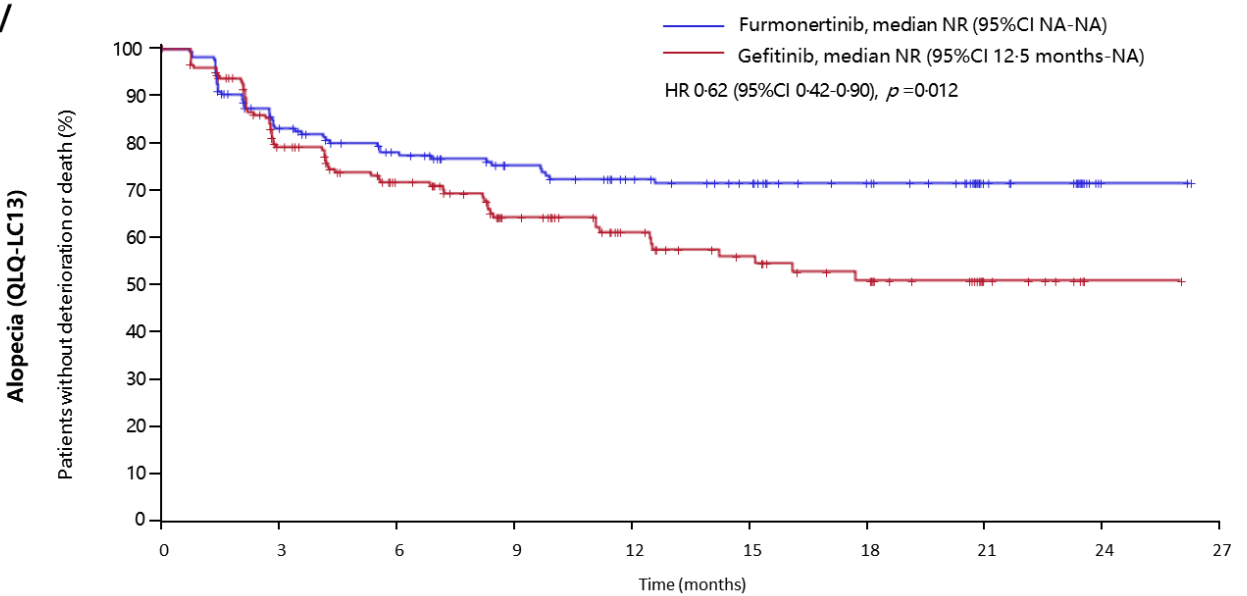
U



Number at risk

Furmonertinib	178	123	108	89	81	74	63	26	1	0
Gefitinib	179	132	102	78	61	50	38	15	1	0

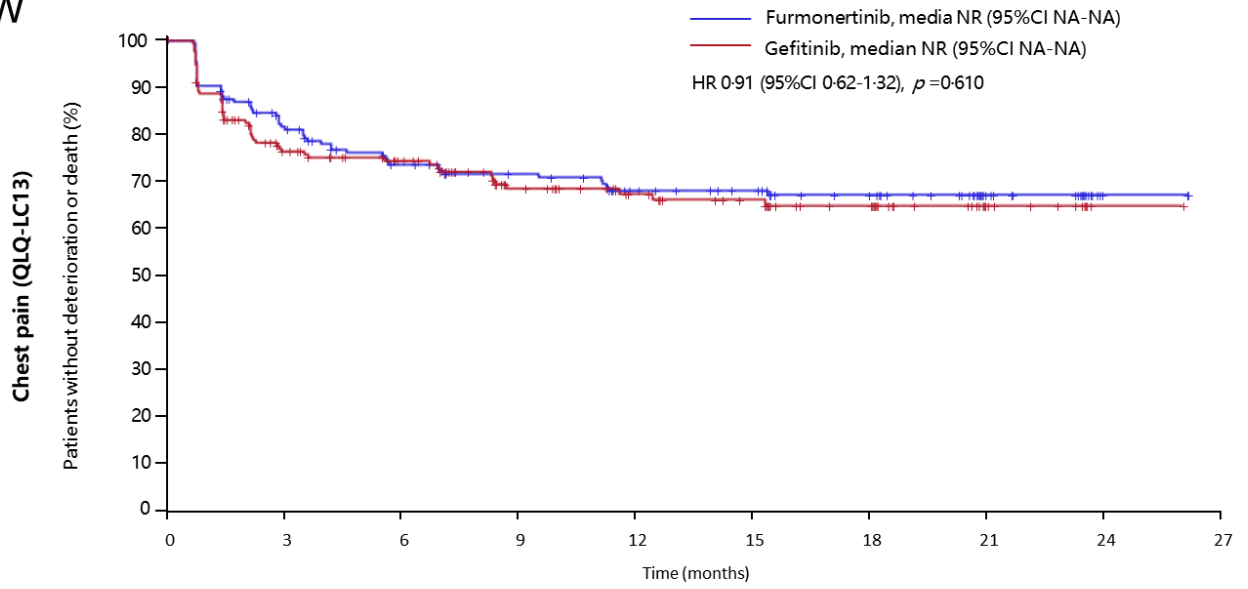
V



Number at risk

Furmonertinib	178	136	117	102	90	81	70	34	2	0
Gefitinib	179	124	95	70	51	38	27	9	1	0

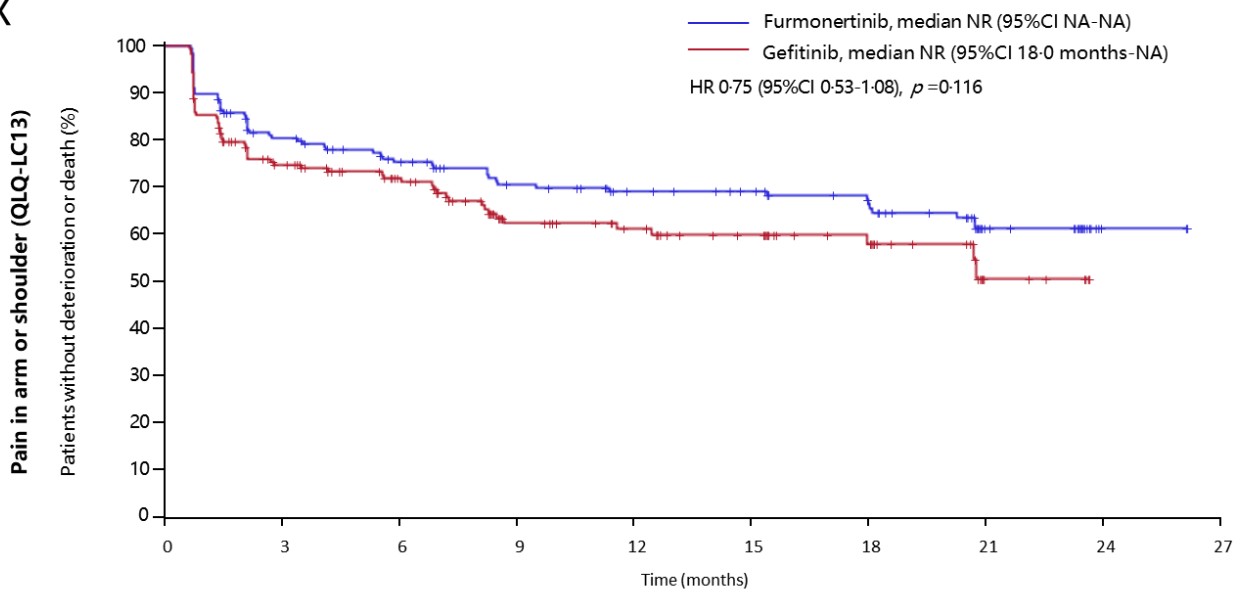
W



Number at risk

Furmonertinib	178	135	113	102	88	82	69	32	2	0
Gefitinib	179	120	199	70	57	49	37	15	1	0

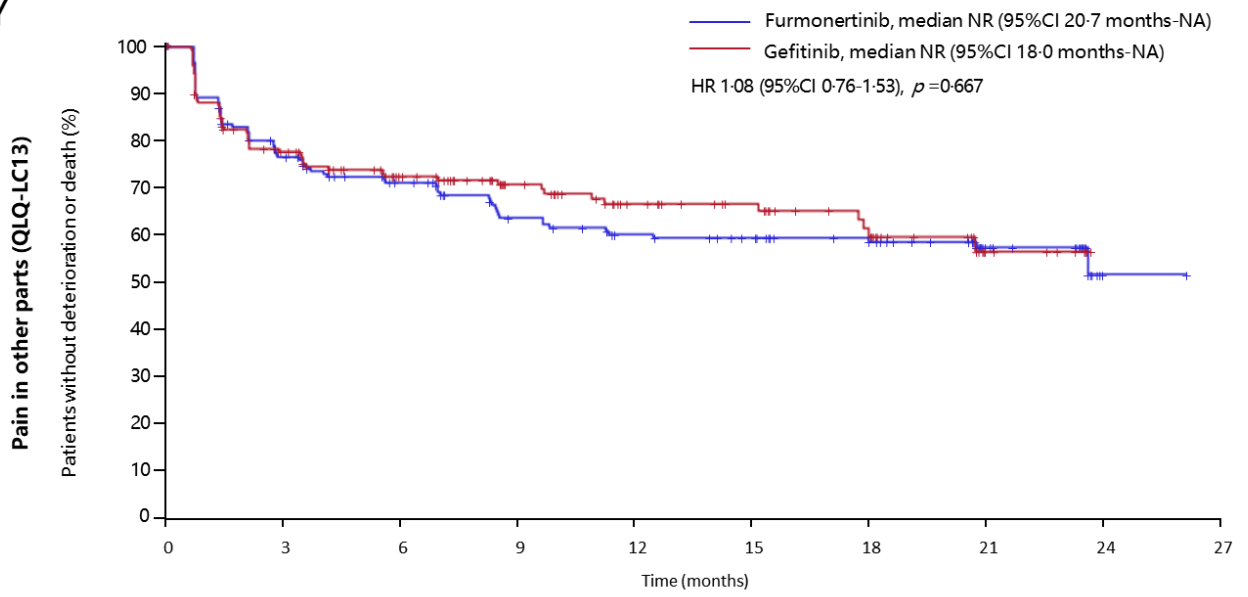
X



Number at risk

Furmonertinib	178	132	115	100	90	84	72	31	2	0
Gefitinib	179	118	93	60	49	40	29	7	0	0

Y



Number at risk

Furmonertinib	178	130	111	91	81	73	64	31	1	0
Gefitinib	179	125	95	73	54	45	32	9	0	0