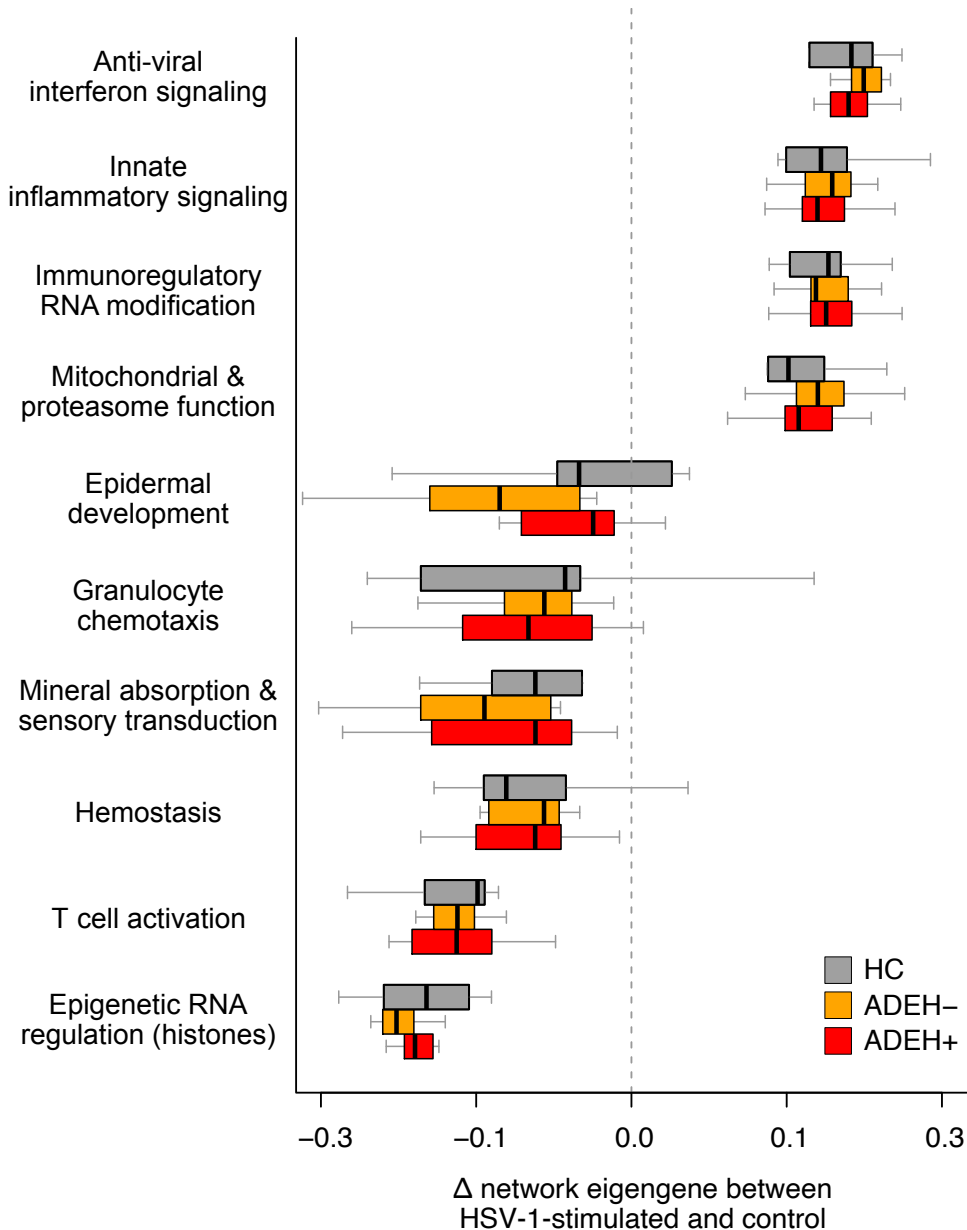


**FIGURE S1**



**Figure S1: Similar responses to HSV-1 infection are observed in pDCs among healthy, ADEH<sup>-</sup>, and ADEH<sup>+</sup> subjects.** Box plots of the change (delta) in WGCNA network expression (summarized by eigengene values) between paired *ex vivo* pDC samples treated with HSV-1 compared with mock treatment. A subset of networks that are significantly modified with treatment are shown and samples are stratified by disease status (healthy control, ADEH<sup>-</sup>, and ADEH<sup>+</sup>). There are no significant differences in network responses among the three disease groups.