

CD25+ CD127^{low}

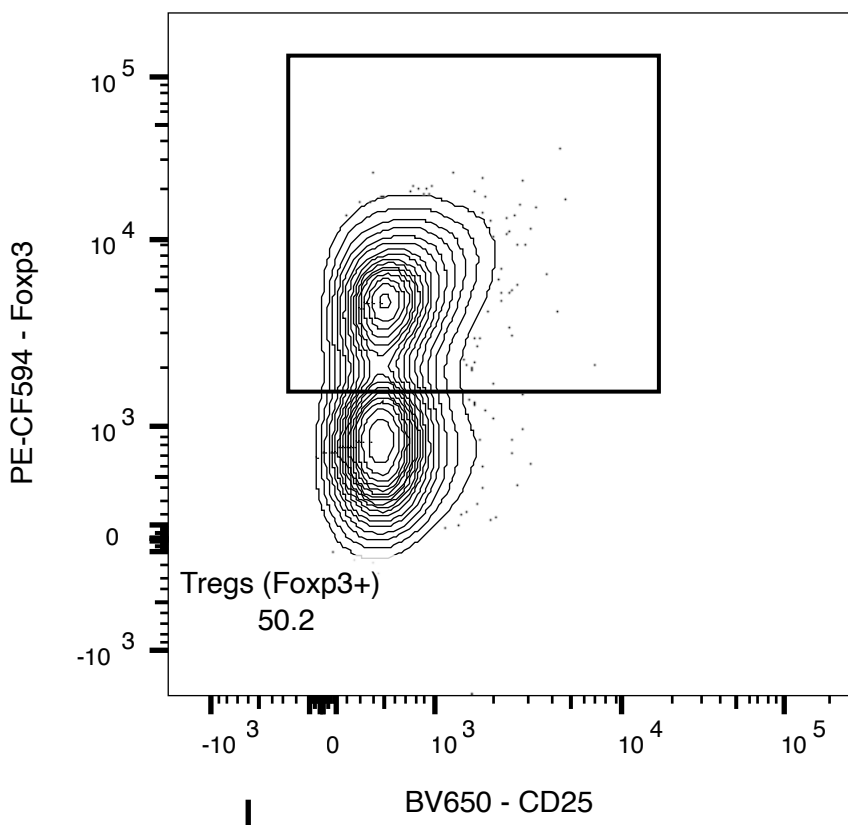
CD25-CD127⁺ (Tconv)

CD4⁺CD8⁻

CD3⁺

live CD45⁺

CD8⁺CD4⁻



Tregs

Tconv Phenotypes

- CCR5⁺
- CCR6⁺
- CD45RA^{+/-}/CCR7^{+/-}
- CD38⁺
- CD39⁺
- CD69⁺
- CD101⁺
- CD69^{+/-}CD103^{+/-}
- CTLA-4⁺
- CXCR3⁺
- GranzymeB⁺
- HLA-DR⁺
- HLA-DR⁺CD38⁺
- Ki67⁺
- PD-1⁺
- PD-1⁺TCF-1⁻
- TCF-1⁺
- T-bet⁺ (Th1)
- CD161⁺CCR6⁺ (Th17)

CD8⁺ T cell Phenotypes

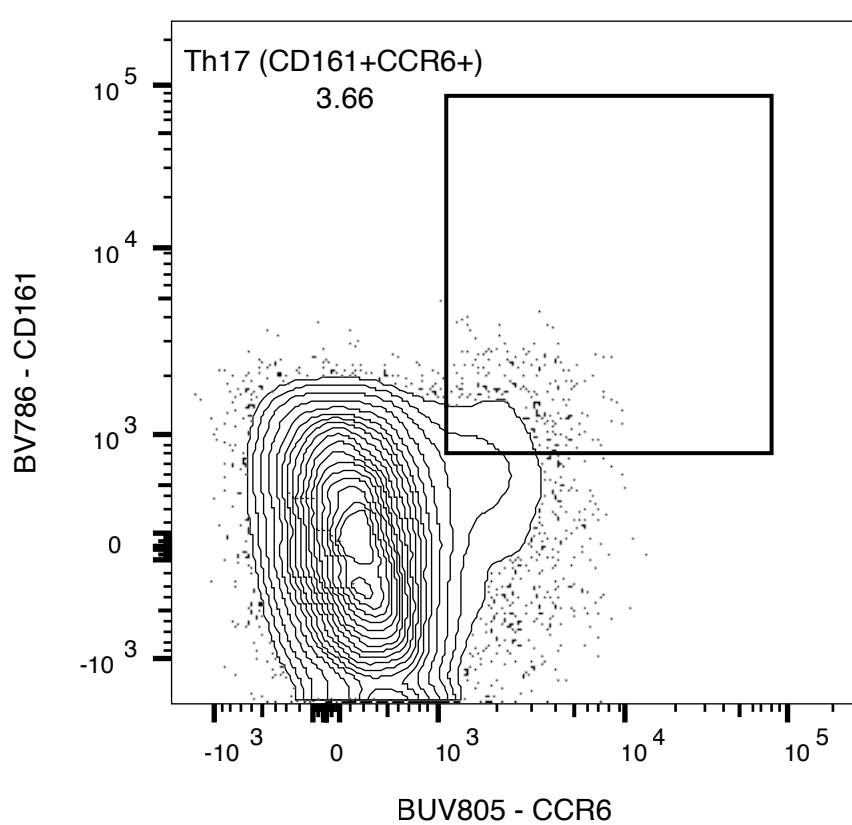
- CCR5⁺
- CCR6⁺
- CD45RA^{+/-}/CCR7^{+/-}
- CD38⁺
- CD39⁺
- CD69⁺
- CD101⁺
- CD69^{+/-}CD103^{+/-}
- CTLA-4⁺
- CXCR3⁺
- GranzymeB⁺
- HLA-DR⁺
- HLA-DR⁺CD38⁺
- Ki67⁺
- PD-1⁺
- PD-1⁺TCF-1⁻
- TCF-1⁺
- T-bet⁺
- CD161⁺CCR6⁺

Treg Phenotypes

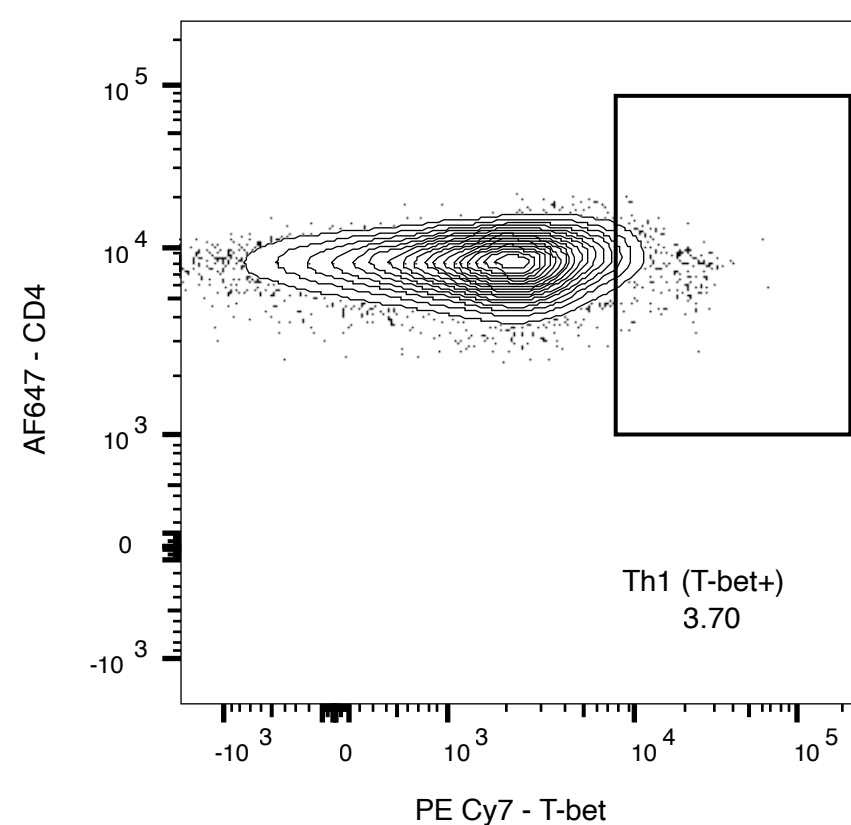
- CCR5⁺
- CCR6⁺
- CD45RA^{+/-}/CCR7^{+/-}
- CD38⁺
- CD39⁺
- CD69⁺
- CD101⁺
- CD69^{+/-}CD103^{+/-}
- CTLA-4⁺
- CXCR3⁺
- GranzymeB⁺
- HLA-DR⁺
- HLA-DR⁺CD38⁺
- Ki67⁺
- PD-1⁺
- PD-1⁺TCF-1⁻
- TCF-1⁺
- T-bet⁺
- CD161⁺CCR6⁺

Th17/Th1 Phenotypes

- CCR5⁺
- CCR6⁺
- CD45RA^{+/-}/CCR7^{+/-}
- CD38⁺
- CD39⁺
- CD69⁺
- CD101⁺
- CD69^{+/-}CD103^{+/-}
- CTLA-4⁺
- CXCR3⁺
- GranzymeB⁺
- HLA-DR⁺
- HLA-DR⁺CD38⁺
- Ki67⁺
- PD-1⁺
- PD-1⁺TCF-1⁻
- TCF-1⁺
- T-bet⁺ (of Th17)
- CD161⁺CCR6⁺ (of Th1)



Th17



Th1