

Supplemental Table 1: Distribution of baseline characteristics between included and excluded participants in the United States Retirement Study

Characteristic	Overall N = 8,781 ¹	Included N = 6,908 ¹	Excluded N = 1,873 ¹	p-value²
Cognitive Status				
Incident dementia	795 (12%)	795 (12%)	0 (NA%)	
Cognitively normal or CIND	6,113 (88%)	6,113 (88%)	0 (NA%)	
Baseline CRP (μg/mL)	4.55 (8.14)	4.37 (8.00)	5.23 (8.60)	<0.001
Age (years)	68.12 (10.38)	67.11 (9.91)	71.84 (11.17)	<0.001
Race				<0.001
Non-Hispanic Black	1,057 (12%)	813 (12%)	244 (13%)	
Hispanic	794 (9.0%)	633 (9.2%)	161 (8.6%)	
Non-Hispanic Other	189 (2.2%)	0 (0%)	189 (10%)	
Non-Hispanic white	6,741 (77%)	5,462 (79%)	1,279 (68%)	
Sex				<0.001
Female	5,290 (60%)	4,234 (61%)	1,056 (56%)	
Male	3,491 (40%)	2,674 (39%)	817 (44%)	
Education Category				<0.001
> College	812 (9.2%)	676 (9.8%)	136 (7.3%)	
College/Some	1,575 (18%)	1,297 (19%)	278 (15%)	
HS or <	6,394 (73%)	4,935 (71%)	1,459 (78%)	
Alcohol (# drinks/day when drinks)	0.70 (1.41)	0.71 (1.30)	0.67 (1.77)	0.279
Smoking				<0.001
Current	1,176 (13%)	851 (12%)	325 (17%)	
Former	3,774 (43%)	2,966 (43%)	808 (43%)	
Never	3,831 (44%)	3,091 (45%)	740 (40%)	
Body Mass Index (kg/m²)	28.33 (5.88)	28.50 (5.79)	27.70 (6.15)	<0.001
Chronic Conditions	2.00 (1.42)	1.88 (1.36)	2.44 (1.56)	<0.001
Wave				<0.001
2006	4,178 (48%)	3,485 (50%)	693 (37%)	
2008	4,603 (52%)	3,423 (50%)	1,180 (63%)	
APOE-ε4				0.646
At least 1	2,373 (27%)	1,859 (27%)	514 (27%)	

Characteristic	Overall N = 8,781 ¹	Included N = 6,908 ¹	Excluded N = 1,873 ¹	p-value ²
No copy	6,408 (73%)	5,049 (73%)	1,359 (73%)	

¹n (%); Mean (SD)

²Pearson's Chi-squared test; One-way ANOVA

CRP: C-reactive protein; *APOE-ε4*: apolipoprotein E ε4 allele carrier status.

CIND: cognitive impairment non-dementia

Supplemental Table 2: Distribution of baseline sample characteristics by racialized social groups in the Health and Retirement Study, 2006 and 2008

Characteristic	Overall N = 6,908 ¹	Non-Hispanic Black N = 813 ¹	Hispanic N = 633 ¹	Non-Hispanic white N = 5,462 ¹	p-value²
Cognitive Status					<0.001
Incident dementia	795 (12%)	171 (21%)	103 (16%)	521 (9.5%)	
Cognitively normal or CIND	6,113 (88%)	642 (79%)	530 (84%)	4,941 (90%)	
Baseline CRP (μg/mL)	4.37 (8.00)	6.45 (10.81)	4.45 (6.70)	4.05 (7.59)	<0.001
CRP Category					<0.001
<25 th	1,727 (25%)	147 (18%)	122 (19%)	1,458 (27%)	
≥25 th & <50 th	1,713 (25%)	143 (18%)	161 (25%)	1,409 (26%)	
≥50 th & <75 th	1,720 (25%)	200 (25%)	182 (29%)	1,338 (24%)	
≥75 th	1,748 (25%)	323 (40%)	168 (27%)	1,257 (23%)	
Age (years)	67.11 (9.91)	65.89 (9.40)	64.00 (9.89)	67.65 (9.91)	<0.001
Sex					<0.001
Female	4,234 (61%)	553 (68%)	403 (64%)	3,278 (60%)	
Male	2,674 (39%)	260 (32%)	230 (36%)	2,184 (40%)	
Educational Category					<0.001
> College	676 (9.8%)	42 (5.2%)	13 (2.1%)	621 (11%)	
College/Some	1,297 (19%)	107 (13%)	53 (8.4%)	1,137 (21%)	
HS or <	4,935 (71%)	664 (82%)	567 (90%)	3,704 (68%)	
Alcohol Use (# drinks/day when drinks)	0.71 (1.30)	0.49 (1.22)	0.57 (1.31)	0.75 (1.30)	<0.001
Smoking					<0.001
Current	851 (12%)	140 (17%)	83 (13%)	628 (11%)	
Former	2,966 (43%)	328 (40%)	241 (38%)	2,397 (44%)	
Never	3,091 (45%)	345 (42%)	309 (49%)	2,437 (45%)	
Body Mass Index (kg/m²)	28.50 (5.79)	30.51 (6.72)	29.44 (5.42)	28.10 (5.60)	<0.001
Chronic Conditions	1.88 (1.36)	2.15 (1.43)	1.72 (1.38)	1.85 (1.34)	<0.001
APOE-ε4					<0.001
At least 1 copy	1,859 (27%)	290 (36%)	137 (22%)	1,432 (26%)	
No copy	5,049 (73%)	523 (64%)	496 (78%)	4,030 (74%)	
Time					<0.001

Characteristic	Overall N = 6,908 ¹	Non-Hispanic Black N = 813 ¹	Hispanic N = 633 ¹	Non-Hispanic white N = 5,462 ¹	p-value ²
2	302 (4.4%)	80 (9.8%)	39 (6.2%)	183 (3.4%)	
4	269 (3.9%)	52 (6.4%)	37 (5.8%)	180 (3.3%)	
6	6,337 (92%)	681 (84%)	557 (88%)	5,099 (93%)	
Wave					0.004
2006	3,485 (50%)	377 (46%)	297 (47%)	2,811 (51%)	
2008	3,423 (50%)	436 (54%)	336 (53%)	2,651 (49%)	

¹n (%); Mean (SD)

²Pearson's Chi-squared test; One-way ANOVA

CRP: C-reactive protein; *APOE-ε4*: apolipoprotein E ε4 allele carrier status.

CIND: cognitive impairment non-dementia

Supplemental Table 3: Baseline levels of C-reactive protein (CRP) by racialized social groups and sex in the United States Health and Retirement Study, waves 2006 & 2008

Race/ethnicity	Sex	Observations	C-reactive protein ($\mu\text{g/mL}$) percentiles							
			Mean	SD	Min	Max	25 th	50 th	75 th	IQR
Non-Hispanic Black	Female	553	6.83	9.99	0.04	85.75	1.41	3.93	8.29	6.88
Non-Hispanic Black	Male	260	5.63	12.36	0.03	125.05	1.12	2.49	5.84	4.72
Hispanic	Female	403	4.76	6.48	0.08	78.11	1.47	2.67	5.69	4.22
Hispanic	Male	230	3.91	7.10	0.04	66.70	0.93	1.88	3.89	2.96
Non-Hispanic white	Female	3278	4.46	8.10	0.04	172.78	1.02	2.22	5.06	4.04
Non-Hispanic white	Male	2184	3.43	6.69	0.02	121.10	0.80	1.56	3.44	2.64

Supplemental Table 4: Distribution of baseline sample characteristics by percentiles of C-reactive protein, United States Health and Retirement Study, 2006 and 2008

Characteristic	C-reactive protein ($\mu\text{g/mL}$) percentiles					p-value ²
	Overall	25 th (<0.98)	25 th - 50 th (≥ 0.98 & <2.06)	50 th - 75 th (≥ 2.06 & <4.73)	75 th (≥ 4.73)	
	N = 6,908 ¹	N = 1,727 ¹	N = 1,713 ¹	N = 1,720 ¹	N = 1,748 ¹	
Cognitive Status						0.418
Incident dementia	795 (12%)	199 (12%)	185 (11%)	192 (11%)	219 (13%)	
Cognitively normal or CIND	6,113 (88%)	1,528 (88%)	1,528 (89%)	1,528 (89%)	1,529 (87%)	
Baseline CRP ($\mu\text{g/mL}$)	4.37 (8.00)	0.54 (0.25)	1.46 (0.29)	3.15 (0.76)	12.21 (12.90)	<0.001
Age (years)	67.11 (9.91)	67.52 (10.29)	67.61 (9.72)	67.32 (9.86)	66.00 (9.70)	<0.001
Race						<0.001
Non-Hispanic Black	813 (12%)	147 (8.5%)	143 (8.3%)	200 (12%)	323 (18%)	
Hispanic	633 (9.2%)	122 (7.1%)	161 (9.4%)	182 (11%)	168 (9.6%)	
Non-Hispanic white	5,462 (79%)	1,458 (84%)	1,409 (82%)	1,338 (78%)	1,257 (72%)	
Sex						<0.001
Female	4,234 (61%)	939 (54%)	968 (57%)	1,080 (63%)	1,247 (71%)	
Male	2,674 (39%)	788 (46%)	745 (43%)	640 (37%)	501 (29%)	
Educational Category						<0.001
> College	676 (9.8%)	258 (15%)	167 (9.7%)	133 (7.7%)	118 (6.8%)	
College/Some	1,297 (19%)	347 (20%)	363 (21%)	309 (18%)	278 (16%)	
HS or <	4,935 (71%)	1,122 (65%)	1,183 (69%)	1,278 (74%)	1,352 (77%)	
Alcohol Use (# drinks/day when drinks)	0.71 (1.30)	0.79 (1.33)	0.77 (1.34)	0.68 (1.26)	0.59 (1.25)	<0.001
Smoking						<0.001
Current	851 (12%)	151 (8.7%)	183 (11%)	241 (14%)	276 (16%)	
Former	2,966 (43%)	712 (41%)	779 (45%)	728 (42%)	747 (43%)	
Never	3,091 (45%)	864 (50%)	751 (44%)	751 (44%)	725 (41%)	
Body Mass Index (kg/m^2)	28.50 (5.79)	26.01 (4.44)	27.55 (4.69)	28.98 (5.31)	31.43 (6.92)	<0.001
Chronic Conditions	1.88 (1.36)	1.67 (1.35)	1.75 (1.31)	1.91 (1.32)	2.17 (1.41)	<0.001
APOE-$\epsilon 4$						<0.001
At least 1 copy	1,859 (27%)	601 (35%)	483 (28%)	415 (24%)	360 (21%)	
No copy	5,049 (73%)	1,126 (65%)	1,230 (72%)	1,305 (76%)	1,388 (79%)	

Characteristic	C-reactive protein ($\mu\text{g/mL}$) percentiles					p-value ²
	Overall	25 th (<0.98)	25 th - 50 th (≥ 0.98 & <2.06)	50 th - 75 th (≥ 2.06 & <4.73)	75 th (≥ 4.73)	
	N = 6,908 ¹	N = 1,727 ¹	N = 1,713 ¹	N = 1,720 ¹	N = 1,748 ¹	
Time						0.007
2	302 (4.4%)	59 (3.4%)	84 (4.9%)	64 (3.7%)	95 (5.4%)	
4	269 (3.9%)	72 (4.2%)	53 (3.1%)	81 (4.7%)	63 (3.6%)	
6	6,337 (92%)	1,596 (92%)	1,576 (92%)	1,575 (92%)	1,590 (91%)	
Wave						0.035
2006	3,485 (50%)	899 (52%)	832 (49%)	839 (49%)	915 (52%)	
2008	3,423 (50%)	828 (48%)	881 (51%)	881 (51%)	833 (48%)	

¹n (%); Mean (SD)

²Pearson's Chi-squared test; One-way ANOVA

CRP: C-reactive protein; *APOE-ε4*: apolipoprotein E $\epsilon 4$ allele carrier status.

CIND: cognitive impairment non-dementia

Supplemental Table 5: Odds ratio of elevated levels of C-reactive protein ($\geq 4.73\mu\text{g/mL}$ or $\geq 75^{\text{th}}$ percentile) stratified by minoritized status and racialized social groups in the US Health and Retirement Study, waves 2006 & 2008.

	Non-Hispanic Black vs non-Hispanic white¹ N = 6,275		Hispanic vs non-Hispanic white¹ N = 6,095		Minoritized Racial Group vs non-Hispanic white² N = 6,908	
Models						
Unadjusted	2.21 ^{***}	[1.89,2.57]	1.21 [*]	[1.00,1.46]	1.72 ^{***}	[1.52,1.95]
Demographic⁺	2.12 ^{***}	[1.81,2.48]	1.02	[0.84,1.24]	1.58 ^{***}	[1.38,1.80]
Risk Factors[§]	1.72 ^{***}	[1.44,2.04]	0.99	[0.80,1.21]	1.37 ^{***}	[1.19,1.58]
Chronic Conditions[§]	1.70 ^{***}	[1.43,2.02]	1.00	[0.81,1.23]	1.37 ^{***}	[1.19,1.58]

Demographic model: adjusted for age, sex, education categories, *APOE-ε4* allele status, and wave.

[§] Risk factors model: adjusted for age, sex, education categories, *APOE-ε4* allele status, wave, smoking status, alcohol consumption, body mass index.

[§] Chronic conditions model: adjusted for age, sex, education categories, *APOE-ε4* allele status, wave, smoking status, alcohol consumption, body mass index, and chronic conditions

¹ Odds ratios, CI: confidence interval in brackets

² Odds ratios, CI: confidence intervals in brackets. Minoritized racial group: (non-Hispanic Black and Hispanic participants)

* $p < 0.05$, ** $p < 0.01$, *** $p < 0.001$

Supplemental Table 6: Randomized analogue mediation models for racial disparities in incident dementia using elevated levels of C-reactive protein (CRP $\geq 4.73\mu\text{g/mL}$) as mediator. Models are stratified by minoritized status and racialized social groups in a sample of United States adults in the Health and Retirement Study

Mediator (CRP)	Minoritized Racial Group vs non-Hispanic white N = 6,908				Randomized Analogue Model* (Outcome: Incident Dementia) non-Hispanic Black vs non-Hispanic white N = 6,275				Hispanic vs non-Hispanic white N = 6,095			
	Estimate	[95%CI]	[95%CI]	p-value	Estimate	[95%CI]	[95%CI]	p-value	Estimate	[95%CI]	[95%CI]	p-value
Excess Risk												
RERI Controlled Direct Effect	1.29	0.94	1.70	<0.00	1.67	1.23	2.33	<0.00	0.90	0.45	1.47	<0.00
RERI Interaction Reference	0.17	0.02	0.38	0.04	0.06	-0.16	0.32	0.66	0.38	0.11	0.82	0.01
RERI Interaction Mediation	0.06	0.00	0.09	0.04	0.03	-0.06	0.12	0.65	0.01	-0.09	0.07	0.94
RERI Pure Indirect Effect	0.01	0.00	0.02	0.23	0.01	0.00	0.03	0.14	0.00	-0.01	0.01	0.99
% Attributable												
% Controlled Direct Effect	0.84	0.70	0.98	<0.00	0.94	0.76	1.12	<0.00	0.70	0.43	0.91	<0.00
% Interaction Reference	0.11	0.01	0.25	0.04	0.03	-0.09	0.17	0.66	0.30	0.09	0.58	0.01
% Interaction Mediation	0.04	0.00	0.06	0.04	0.02	-0.03	0.06	0.65	0.01	-0.07	0.06	0.94
% Pure Indirect Effect	0.01	0.00	0.01	0.23	0.01	0.00	0.02	0.14	0.00	-0.01	0.01	0.99
Percent Mediated	0.04	0.00	0.06	0.01	0.02	-0.03	0.07	0.42	0.01	-0.08	0.06	0.94
Percent due to Interaction	0.15	0.01	0.29	0.04	0.05	-0.12	0.23	0.66	0.30	0.09	0.57	0.01
Percent Eliminated	0.16	0.02	0.30	0.03	0.06	-0.12	0.24	0.56	0.30	0.09	0.57	0.01

*Model: outcome 6-year incident dementia, model adjusting for age, sex, education categories, wave, smoking status, alcohol consumption, body mass index, alcohol consumption, and chronic conditions, using *APOE-ε4* as variable affected by the racialized social group through ancestry. Minoritized racial group: (non-Hispanic Black and Hispanic participants)

Supplemental Table 7A: Meditational E-values for regression-based models; estimates are presented in the rate ratio scale. Models are stratified by racialized social groups in a sample of the United States adults in the Health and Retirement Study.

Rate Ratio Scale	Minoritized vs non-Hispanic white*					
	Estimate	LB 95%CI	UB 95%CI	E-value	E-value LB	E-value UB
Controlled direct effect (Rcde)	2.30	1.94	2.74	4.03	3.28	NA
Pure natural direct effect (Rpnde)	2.43	2.11	2.81	4.29	3.64	NA
Total natural direct effect (Rtnde)	2.46	2.13	2.83	4.35	3.69	NA
Pure natural indirect effect (Rpnie)	1.01	1.00	1.02	1.09	1.00	NA
Total natural indirect effect (Rtnie)	1.02	1.00	1.04	1.16	1.06	NA
Total effect (Rte)	2.47	2.15	2.85	4.38	3.72	NA
	non-Hispanic Black vs non-Hispanic white*					
	Estimate	LB 95%CI	UB 95%CI	E-value	E-value LB	E-value UB
Controlled direct effect (Rcde)	2.65	2.18	3.30	4.75	3.79	NA
Pure natural direct effect (Rpnde)	2.65	2.25	3.20	4.75	3.92	NA
Total natural direct effect (Rtnde)	2.65	2.26	3.20	4.75	3.95	NA
Pure natural indirect effect (Rpnie)	1.01	1.00	1.04	1.11	1.00	NA
Total natural indirect effect (Rtnie)	1.01	0.98	1.05	1.11	1.00	NA
Total effect (Rte)	2.68	2.29	3.22	4.80	4.00	NA
	Hispanic vs non-Hispanic white*					
	Estimate	LB 95%CI	UB 95%CI	E-value	E-value LB	E-value UB
Controlled direct effect (Rcde)	1.98	1.49	2.58	3.36	2.34	NA
Pure natural direct effect (Rpnde)	2.33	1.86	2.86	4.09	3.13	NA
Total natural direct effect (Rtnde)	2.31	1.85	2.85	4.05	3.11	NA
Pure natural indirect effect (Rpnie)	1.00	0.99	1.01	1.05	NA	1.00
Total natural indirect effect (Rtnie)	0.99	0.96	1.03	1.11	NA	1.00
Total effect (Rte)	2.31	1.85	2.84	4.04	3.10	NA

* These E-values are on the rate ratio scale and correspond to the decomposition presented on Table 3

LB: Lower bound; UB: Upper bound

95%CI: 95% Confidence interval

NA: not applicable

Supplemental Table 7B: Mediational E-values for randomized analogue models; estimates are presented in the rate ratio scale. Models are stratified by racialized social groups in a sample of the United States adults in the Health and Retirement Study.

Rate Ratio Scale	Minoritized vs non-Hispanic white*					
	Estimate	LB 95%CI	UB 95%CI	E-value	E-value LB	E-value UB
Controlled direct effect (Rcde)	2.33	1.97	2.78	4.08	3.35	NA
Pure natural direct effect (rRpnde) ⁺	2.46	2.15	2.88	4.36	3.73	NA
Total natural direct effect (rRtnde) ⁺	2.50	2.17	2.92	4.45	3.77	NA
Pure natural indirect effect (rRpnie) ⁺	1.01	1.00	1.02	1.11	1.00	NA
Total natural indirect effect (rRtnie) ⁺	1.03	1.00	1.04	1.19	1.04	NA
Total effect (Rte)	2.53	2.19	2.93	4.49	3.80	NA
	non-Hispanic Black vs non-Hispanic white*					
	Estimate	LB 95%CI	UB 95%CI	E-value	E-value LB	E-value UB
Controlled direct effect (Rcde)	2.73	2.29	3.43	4.91	4.00	NA
Pure natural direct effect (rRpnde) ⁺	2.73	2.35	3.34	4.91	4.13	NA
Total natural direct effect (rRtnde) ⁺	2.74	2.35	3.29	4.91	4.14	NA
Pure natural indirect effect (rRpnie) ⁺	1.01	1.00	1.03	1.13	1.00	NA
Total natural indirect effect (rRtnie) ⁺	1.02	0.98	1.05	1.14	1.00	NA
Total effect (Rte)	2.77	2.38	3.35	4.99	4.19	NA
	Hispanic vs non-Hispanic white*					
	Estimate	LB 95%CI	UB 95%CI	E-value	E-value LB	E-value UB
Controlled direct effect (Rcde)	1.93	1.46	2.53	3.27	2.28	NA
Pure natural direct effect (rRpnde) ⁺	2.28	1.87	2.85	3.99	3.15	NA
Total natural direct effect (rRtnde) ⁺	2.29	1.87	2.83	4.01	3.15	NA
Pure natural indirect effect (rRpnie) ⁺	1.00	0.99	1.01	1.02	1.00	NA
Total natural indirect effect (rRtnie) ⁺	1.00	0.96	1.04	1.07	1.00	NA
Total effect (Rte)	2.29	1.87	2.84	4.01	3.15	NA

* These E-values are on the rate ratio scale and correspond to the decomposition presented on Supplemental Table 6

+ Randomized analogue estimate

LB: Lower bound; UB: Upper bound

95%CI: 95% Confidence interval

NA: not applicable

Supplemental Table 8: Randomized analogue mediation models for racial disparities in incident dementia using elevated levels of C-reactive protein (CRP $\geq 4.73\mu\text{g/mL}$) as mediator. Models are stratified by minoritized status and racialized social groups in a sample of United States adults in the Health and Retirement Study

Mediator (CRP)	Minoritized Racial Group vs non-Hispanic white N = 6,908				Randomized Analogue Model ⁺ (Outcome: Incident Dementia) non-Hispanic Black vs non-Hispanic white N = 6,275				Hispanic vs non-Hispanic white N = 6,095			
	Estimate	[95%CI]	[95%CI]	p-value	Estimate	[95%CI]	[95%CI]	p-value	Estimate	[95%CI]	[95%CI]	p-value
Excess Risk												
RERI Controlled Direct Effect	1.29	0.91	1.70	<0.00	1.69	1.20	2.27	<0.00	0.90	0.43	1.46	0.00
RERI Interaction Reference	0.19	0.02	0.39	0.03	0.07	-0.15	0.35	0.55	0.41	0.11	0.82	0.00
RERI Interaction Mediation	0.05	0.00	0.09	0.03	0.02	-0.05	0.11	0.55	-0.02	-0.10	0.07	0.94
RERI Pure Indirect Effect	0.01	0.00	0.02	0.23	0.01	0.00	0.03	0.15	0.00	-0.01	0.01	0.96
% Attributable												
% Controlled Direct Effect	0.84	0.71	0.98	<0.00	0.95	0.75	1.11	0.00	0.70	0.44	0.91	0.00
% Interaction Reference	0.12	0.01	0.25	0.03	0.04	-0.09	0.18	0.55	0.32	0.09	0.57	0.00
% Interaction Mediation	0.03	0.00	0.06	0.03	0.01	-0.03	0.06	0.55	-0.02	-0.07	0.05	0.94
% Pure Indirect Effect	0.00	0.00	0.01	0.23	0.00	0.00	0.02	0.15	0.00	-0.01	0.01	0.96
Percent Mediated	0.03	0.00	0.06	0.01	0.01	-0.02	0.07	0.35	-0.02	-0.08	0.06	0.94
Percent due to Interaction	0.15	0.02	0.28	0.03	0.05	-0.12	0.25	0.55	0.30	0.09	0.56	0.00
Percent Eliminated	0.16	0.02	0.29	0.02	0.05	-0.11	0.25	0.47	0.30	0.09	0.56	0.00

⁺Model: outcome 6-year incident cognitive impairment, model adjusting for age, sex, wave, smoking status, alcohol consumption, body mass index, alcohol consumption, and chronic conditions, using *APOE-ε4* and educational attainment as variables affected by racialized social group. Minoritized racial group: (non-Hispanic Black and Hispanic participants)

Supplemental Table 9: Incidence rate ratios from Poisson regression analysis, estimates represent the association between elevated levels of C-reactive protein (CRP) ($\geq 4.73\mu\text{g/mL}$) and 6-year cognitive impairment (dementia or cognitive impairment non-dementia) in the United States Health and Retirement Study. Models are stratified by racialized social groups and minoritized status.

Incident Cognitive Impairment (dementia or cognitive impairment non-dementia)										
	Overall		Minoritized (non-Hispanic Black & Hispanic)		Non-Hispanic Black		Hispanic		Non-Hispanic white	
	N = 6,151		N = 1,065		N = 580		N = 485		N = 5,086	
Models	IRR ¹	95% CI ¹	IRR ¹	95% CI ¹	IRR ¹	95% CI ¹	IRR ¹	95% CI ¹	IRR ¹	95% CI ¹
Unadjusted										
< 75 th	1	-	1	-	1	-	1	-	1	-
$\geq 75^{\text{th}}$ ($\geq 4.73\mu\text{g/mL}$)	1.06	[0.96,1.18]	1.02	[0.86,1.22]	0.97	[0.77,1.21]	1.10	[0.82,1.46]	1.00	[0.88,1.13]
Demographic⁺										
< 75 th	1	-	1	-	1	-	1	-	1	-
$\geq 75^{\text{th}}$ ($\geq 4.73\mu\text{g/mL}$)	1.08	[0.97,1.19]	1.04	[0.87,1.24]	1.00	[0.80,1.26]	1.08	[0.81,1.43]	1.08	[0.96,1.22]
Risk Factors[§]										
< 75 th	1	-	1	-	1	-	1	-	1	-
$\geq 75^{\text{th}}$ ($\geq 4.73\mu\text{g/mL}$)	1.07	[0.96,1.19]	1.04	[0.86,1.25]	1.01	[0.80,1.29]	1.07	[0.79,1.44]	1.08	[0.95,1.22]
Chronic Conditions[§]										
< 75 th	1	-	1	-	1	-	1	-	1	-
$\geq 75^{\text{th}}$ ($\geq 4.73\mu\text{g/mL}$)	1.05	[0.95,1.17]	1.02	[0.85,1.23]	1.01	[0.80,1.28]	1.07	[0.80,1.43]	1.05	[0.93,1.19]

⁺ Demographic model: adjusted for age, sex, education categories, *APOE-ε4* allele status, and wave. Note: the demographic model in the overall sample (N=6,151) additionally adjust for racialized social groups

[§] Risk factors model: adjusted for age, sex, education categories, *APOE-ε4* allele status, wave, smoking status, alcohol consumption, body mass index.

[§] Chronic conditions model: adjusted for age, sex, education categories, *APOE-ε4* allele status, wave, smoking status, alcohol consumption, body mass index, and chronic conditions

¹ IRR: incidence rate ratio, CI: confidence interval in brackets,

* $p < 0.05$, ** $p < 0.01$, *** $p < 0.001$

Supplemental Table 10: Incidence rate ratios from Poisson regression analysis, estimates represent the association between C-reactive protein (CRP) (standardized log transformation) and 6-year incident dementia in the United States Health and Retirement Study. Models are stratified by racialized social groups and minoritized status.

	Incident Dementia									
	Overall		Minoritized (non-Hispanic Black & Hispanic)		Non-Hispanic Black		Hispanic		Non-Hispanic white	
	N = 6,908		N = 1,446		N = 813		N = 633		N = 5,462	
Models	IRR¹	95% CI¹	IRR¹	95% CI¹	IRR¹	95% CI¹	IRR¹	95% CI¹	IRR¹	95% CI¹
Unadjusted										
Log CRP	1.04	[0.96,1.11]	0.99	[0.88,1.12]	0.95	[0.82,1.09]	1.05	[0.86,1.30]	1.00	[0.91,1.09]
Demographic⁺										
Log CRP	1.05	[0.98,1.13]	1.05	[0.94,1.17]	1.01	[0.88,1.16]	1.09	[0.89,1.33]	1.05	[0.96,1.15]
Risk Factors[§]										
Log CRP	1.07	[0.99,1.15]	1.05	[0.93,1.18]	1.02	[0.88,1.18]	1.07	[0.98,1.17]	1.07	[0.98,1.17]
Chronic Conditions[§]										
Log CRP	1.06	[0.99,1.14]	1.05	[0.93,1.19]	1.03	[0.89,1.19]	1.03	[0.89,1.16]	1.07	[0.98,1.16]

⁺ Demographic model: adjusted for age, sex, education categories, *APOE-ε4* allele status, and wave. Note: the demographic model in the overall sample (N=6,908) additionally adjust for racialized social groups

[§] Risk factors model: adjusted for age, sex, education categories, *APOE-ε4* allele status, wave, smoking status, alcohol consumption, body mass index.

[§] Chronic conditions model: adjusted for age, sex, education categories, *APOE-ε4* allele status, wave, smoking status, alcohol consumption, body mass index, and chronic conditions

¹ IRR: incidence rate ratio, CI: confidence interval in brackets,

* $p < 0.05$, ** $p < 0.01$, *** $p < 0.001$

Supplemental Table 11: 4-way mediation analysis decomposition for racialized disparities in incident dementia using C-reactive protein (standardized log transformation) as mediator. Models are stratified by minoritized status and racialized social groups in a sample of United States adults in the Health and Retirement Study

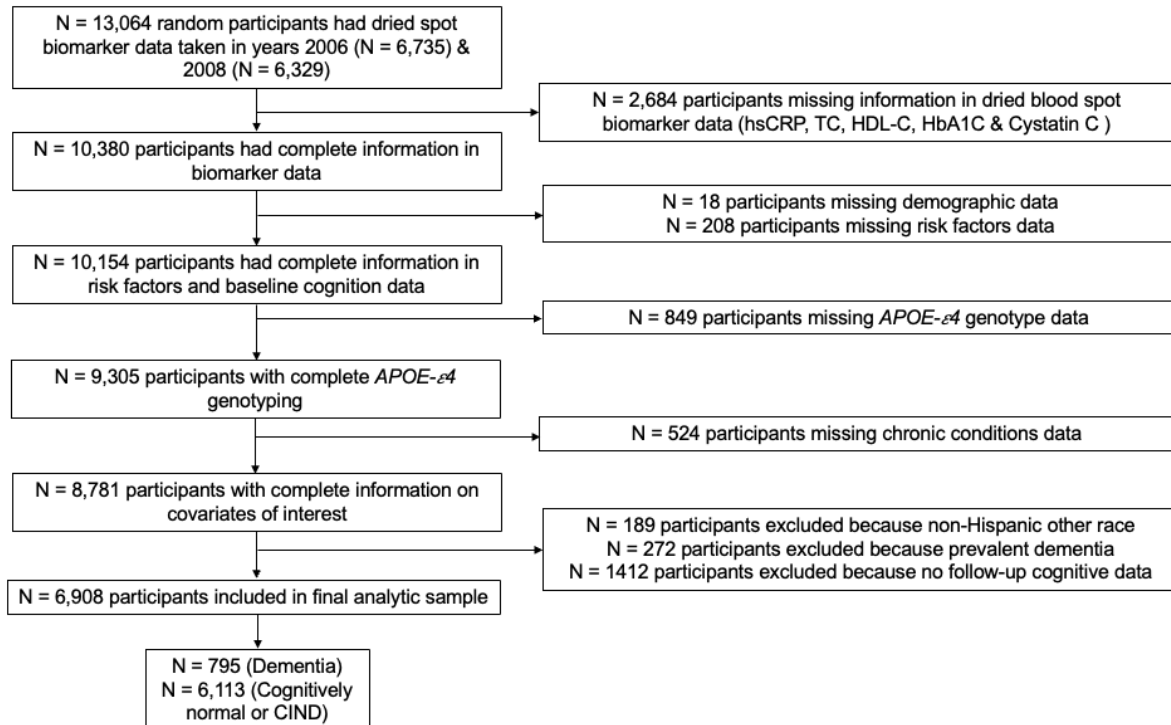
Mediator (CRP)	Incident Dementia*											
	Minoritized Racial Group vs non-Hispanic white N = 6,908				non-Hispanic Black vs non-Hispanic white N = 6,275				Hispanic vs non-Hispanic white N = 6,095			
	Estimate	[95%CI]	[95%CI]	p-value	Estimate	[95%CI]	[95%CI]	p-value	Estimate	[95%CI]	[95%CI]	p-value
Excess Risk												
RERI Controlled Direct Effect	1.45	1.12	1.84	0.00	1.65	1.23	2.15	0.00	1.30	0.84	1.83	0.00
RERI Interaction Reference	0.00	-0.02	0.03	0.62	-0.01	-0.02	0.03	0.63	0.01	-0.01	0.10	0.68
RERI Interaction Mediation	0.03	-0.01	0.08	0.12	0.04	-0.04	0.14	0.29	0.01	-0.01	0.07	0.38
RERI Pure Indirect Effect	0.00	-0.01	0.02	0.40	0.01	-0.01	0.03	0.21	0.00	0.00	0.01	0.46
% Attributable												
% Controlled Direct Effect	0.98	0.93	1.00	0.00	0.97	0.91	1.01	0.00	0.98	0.88	1.01	0.00
% Interaction Reference	0.00	-0.01	0.02	0.62	-0.01	-0.01	0.02	0.63	0.01	-0.01	0.08	0.68
% Interaction Mediation	0.02	0.00	0.05	0.12	0.03	-0.02	0.08	0.29	0.01	-0.01	0.05	0.38
% Pure Indirect Effect	0.00	0.00	0.01	0.40	0.01	0.00	0.02	0.21	0.00	0.00	0.01	0.46
Percent Mediated	0.02	0.00	0.05	0.06	0.03	-0.02	0.09	0.19	0.01	-0.01	0.05	0.33
Percent due to Interaction	0.02	0.00	0.06	0.19	0.02	-0.01	0.09	0.33	0.02	-0.01	0.12	0.37
Percent Eliminated	0.02	0.00	0.07	0.06	0.03	-0.01	0.09	0.16	0.02	-0.01	0.12	0.29

*Outcome 6-year incident dementia, model adjusting for age, sex, education categories, *APOE-ε4* allele status, wave, smoking status, alcohol consumption, body mass index, and chronic conditions. Minoritized racial group: (non-Hispanic Black and Hispanic participants)

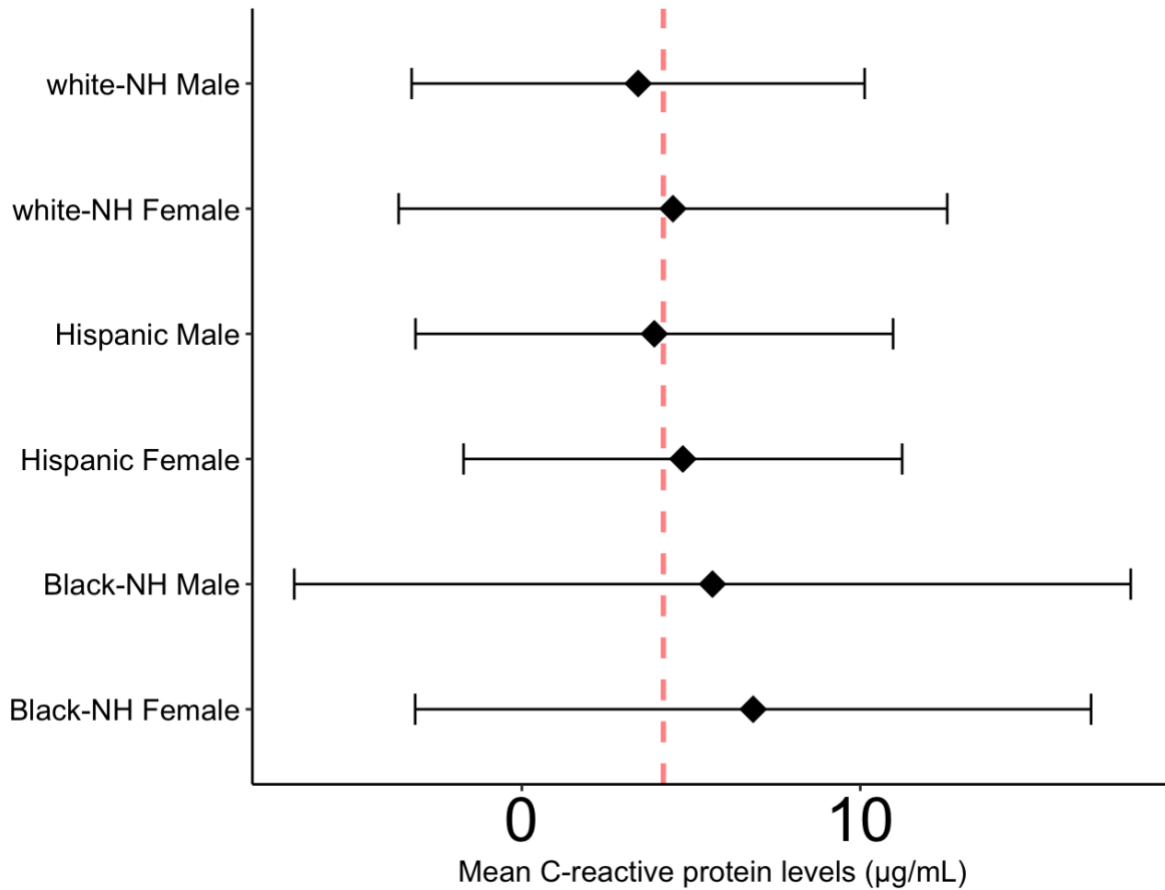
Supplemental Table 12: Randomized analogue mediation model for racial disparities in incident dementia using C-reactive protein (standardized log transformation) as mediator. Models are stratified by minoritized status and racialized social groups in a sample of United States adults in the Health and Retirement Study

Mediator (CRP)	Incident Dementia ⁺											
	Minoritized Racial Group vs non-Hispanic white N = 6,908				non-Hispanic Black vs non-Hispanic white N = 6,275				Hispanic vs non-Hispanic white N = 6,095			
	Estimate	[95%CI]	[95%CI]	p-value	Estimate	[95%CI]	[95%CI]	p-value	Estimate	[95%CI]	[95%CI]	p-value
Excess Risk												
RERI Controlled Direct Effect	1.48	1.15	1.89	0.00	1.72	1.32	2.29	0.00	1.25	0.81	1.74	0.00
RERI Interaction Reference	0.01	-0.01	0.06	0.51	0.02	0.00	0.07	0.53	0.03	0.00	0.15	0.28
RERI Interaction Mediation	0.02	-0.01	0.08	0.12	0.03	-0.03	0.13	0.29	0.00	-0.01	0.08	0.35
RERI Pure Indirect Effect	0.00	-0.01	0.02	0.40	0.01	-0.01	0.03	0.22	0.00	0.00	0.01	0.45
% Attributable												
% Controlled Direct Effect	0.98	0.92	1.00	0.00	0.97	0.89	1.01	0.00	0.97	0.84	1.00	0.00
% Interaction Reference	0.01	0.00	0.04	0.51	0.01	0.00	0.04	0.53	0.02	0.00	0.12	0.28
% Interaction Mediation	0.02	0.00	0.05	0.12	0.02	-0.02	0.07	0.29	0.00	-0.01	0.06	0.35
% Pure Indirect Effect	0.00	0.00	0.01	0.40	0.00	0.00	0.01	0.22	0.00	0.00	0.01	0.45
Percent Mediated	0.02	0.00	0.05	0.06	0.02	-0.01	0.07	0.19	0.00	-0.01	0.06	0.31
Percent due to Interaction	0.02	-0.01	0.08	0.15	0.03	-0.02	0.10	0.31	0.03	-0.01	0.16	0.22
Percent Eliminated	0.02	0.00	0.08	0.07	0.03	-0.01	0.11	0.20	0.03	0.00	0.16	0.18

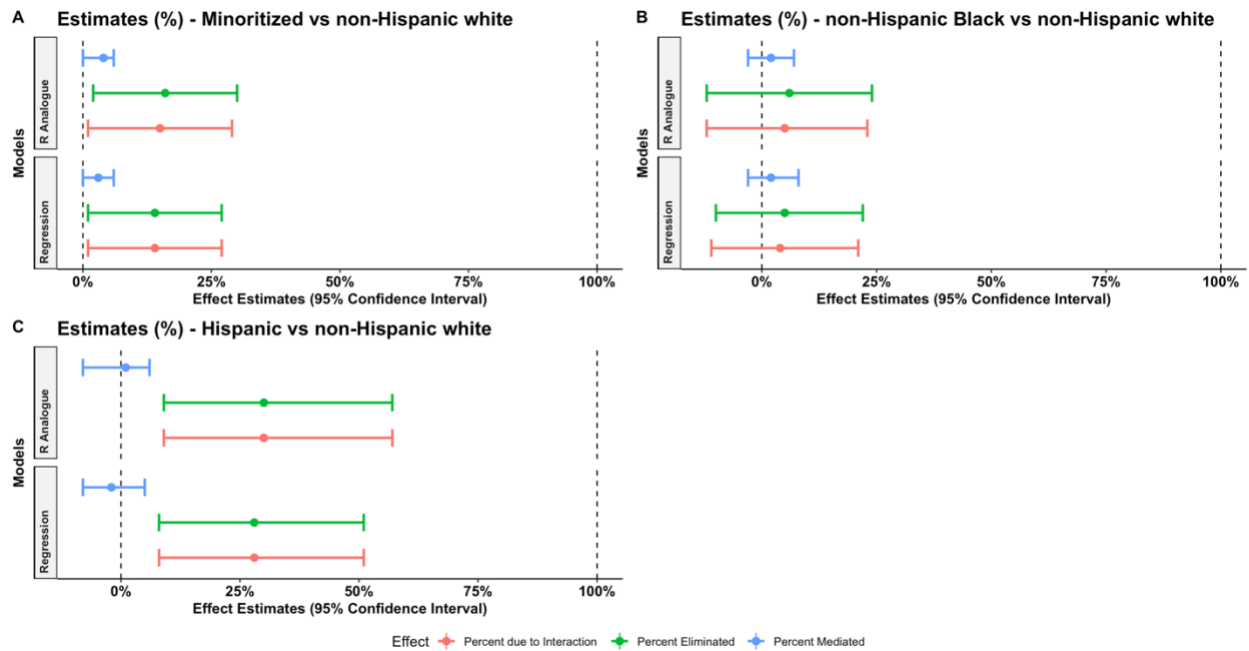
⁺ Model: outcome 6-year incident dementia, model adjusting for age, sex, education categories, wave, smoking status, alcohol consumption, body mass index, and chronic conditions, using *APOE-ε4* allele status as variable affected by the racialized social group through ancestry. Minoritized racial group: (non-Hispanic Black and Hispanic participants)



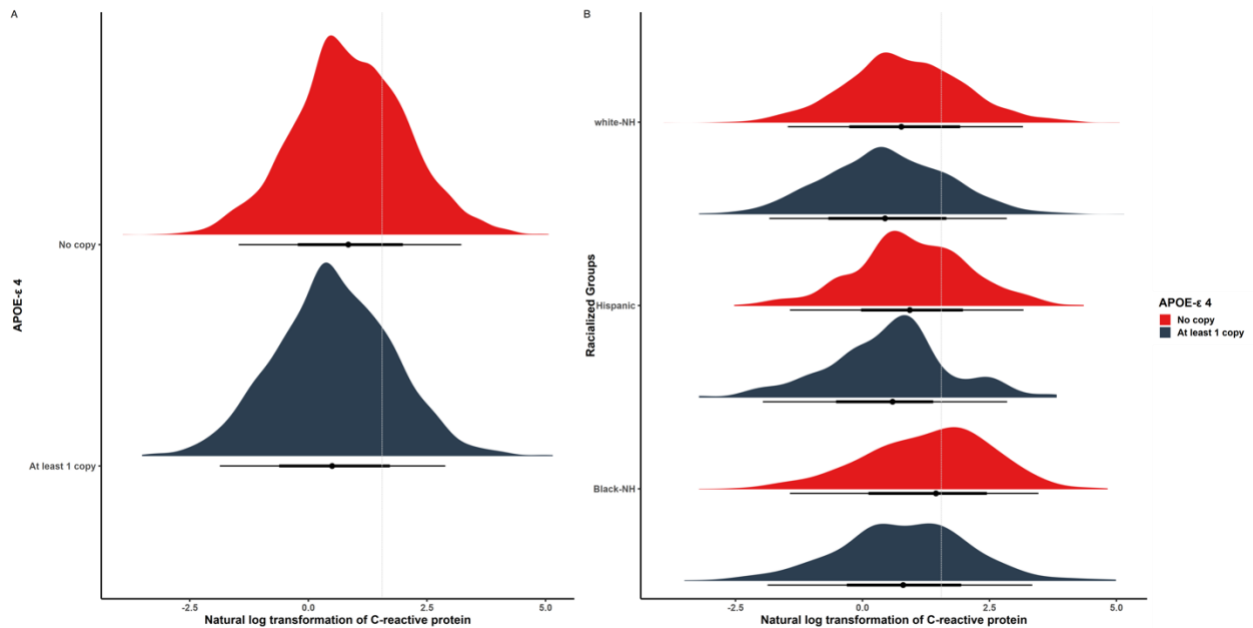
Supplemental Figure 1: Flow diagram of analytic sample study in the Health and Retirement Study. CRP: C-reactive protein, TC: total cholesterol; HDL-C: high density lipoprotein; HbA1C: glycosylated hemoglobin, *APOE-ε4*: apolipoprotein E $\epsilon 4$ allele carrier status, CIND: cognitive impairment non-dementia.



Supplemental Figure 2: Baseline C-reactive protein levels ($\mu\text{g/mL}$) by racialized social groups and sex in the United States Health and Retirement Study, waves 2006 & 2008. Dotted red line denotes the average levels of C-reactive protein in the overall sample ($4.37\mu\text{g/mL}$). Dots represent mean C-reactive protein levels in each group and error bars illustrate the standard deviation. white-NH: non-Hispanic white ($n=5,462$; non-Hispanic white women, $n=3,278$). Black-NH: non-Hispanic Black ($n=813$; non-Hispanic Black women, $n=553$). Hispanic ($n=633$; Hispanic women = 403)



Supplemental Figure 3: Plot of mediation analysis estimates from regression-based and randomized analogue models denoting percent of the racial disparity in incident dementia that is due to the mediating effect of C-reactive protein, the percent due to the interaction between exposure and mediator, and the proportion eliminated. **A.** Mediation estimates from the racial disparity between the minoritized racial group (non-Hispanic Black and Hispanic) vs the non-Hispanic white group. **B.** Mediation estimates from the racial disparity between the non-Hispanic Black vs the non-Hispanic white group. **C.** Mediation estimates from the racial disparity between the Hispanic group vs the non-Hispanic white group.



Supplemental Figure 4: Density plot of natural logarithmic transformation of C-reactive protein (CRP) in a selected sample of United States adults in the Health and Retirement Study. **A.** Distribution of the natural logarithmic transformation of C-reactive protein (CRP) by *APOE-ε4* allele carrier status in our selected sample from the Health and Retirement Study (HRS). Dotted line denotes the cut off point for elevated levels of CRP at the 75th percentile ($\geq 4.73\mu\text{g/mL}$, $n=8,320$). **B.** Distribution of CRP by racialized groups and *APOE-ε4* allele carrier status. white-NH: non-Hispanic white ($n=6,602$), Black-NH: non-Hispanic Black ($n=971$), Hispanic ($n=747$)

