

## Author Checklist for Research Highlight (STTT)

- Words** (1,100 words max excluding references and figure legend).
- The **title** is suggested to be in no more than **15** words.
- The **title** should avoid use of jargon, abbreviations, and question; **if abbreviation is indispensable, please put full name first and abbreviation in the brackets.**
- Authorship** (no more than 3 authors).
- Please **double check** the authorship (including but not limited to the **spellings of all authors' names**, the **order of the author list**, and the **markings of all co-first and co-corresponding authors**) in both the manuscript files uploaded and the online submission system, to **ensure no mistakes**.
- \*\*Any changes to authorship will not be allowed once the manuscript has been accepted for publication. Correction Note regarding authorship changes will not be allowed either after formal publication.**
- Please upload the “**Change of Authorship Request Form**” when submitting the revision if any changes concerning the authorship (including but not limited to: **removal** and/or **addition** of any authors, **change of authors' order**, etc.) are made. You can download this form at: <https://resource-cms.springernature.com/springer-cms/rest/v1/content/7454878/data/v5>
- Author institutions or affiliations** (as concise as possible).
- DO NOT** put the first one or two sentences (the brief introduction) into bold font.
- Figure:** Max of 1; should be uploaded as a single JPG or TIFF file.
- Image** resolution of **at least 300 dpi** at publication size.
- Figures** divided into parts should be labelled with a **lower-case, boldface 'a', 'b', etc.** in the **top left-hand** corner.
- Figures** use the same typeface (Arial or Helvetica) for all figures. Use symbol font for Greek letters.
- Figures** are best prepared at the size you would expect them to appear in print. At this size, the optimum font size is 8pt and no lines should be thinner than 0.25pt (0.09 mm).

☑ **Figures** (or parts of figures) generated from online tools (e.g., **BioRender, etc**) or including online picture resources (e.g. from **SMART - Servier Medical ART, etc**) should be clearly indicated by **citing the original websites in the figure legend** or following the requirements mentioned in the original websites.

☑ **Reference style** (All authors should be listed for papers with up to 5 authors; for papers with more than 5 authors, the first only should be listed, followed by et al. Abbreviations for titles of medical periodicals should conform to those used in the latest edition of Index Medicus. The first and last page numbers for each reference should be provided. References to the literature in the text should be typed as **superscripts after any punctuation.**)

☑ **Reference number:** Max of 5.

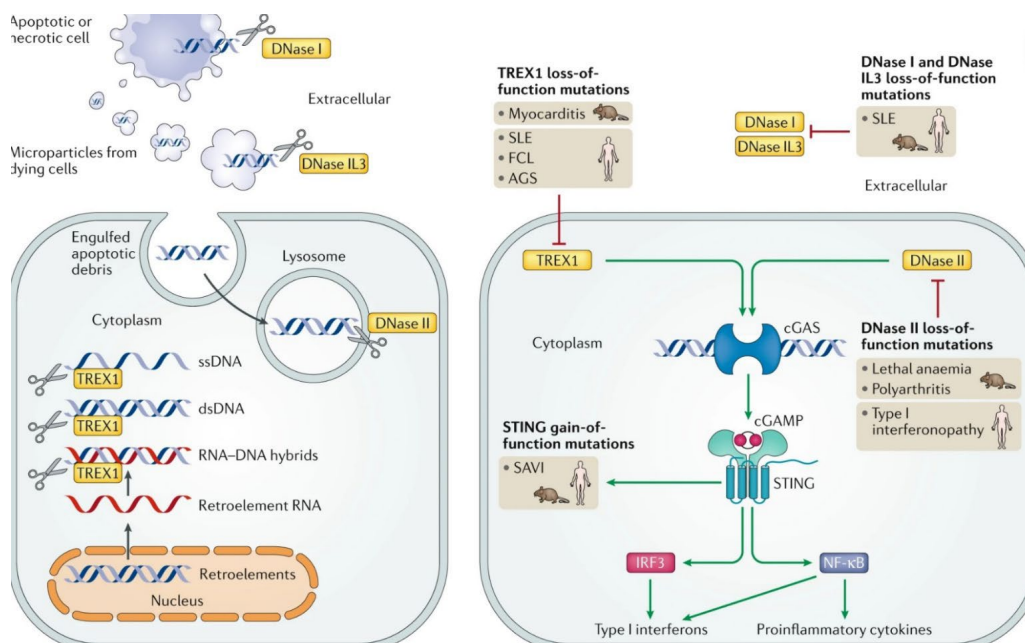
☑ When describing COVID-19-associated background and results, please **avoid using** the words such as “Wuhan virus/strain”, “Hubei”, “spread from China”, etc.

☑ **“Conflicts of interest”** and **“Author contributions”** sections are **necessary**. Please add the statement “All authors have read and approved the article” in the Contributions part.

☑ **World map** is strongly **discouraged** from being used in figures.

☑ **Figure style** (Please refer to Example 1 and 2)

**Example 1:**



## Example 2:

