

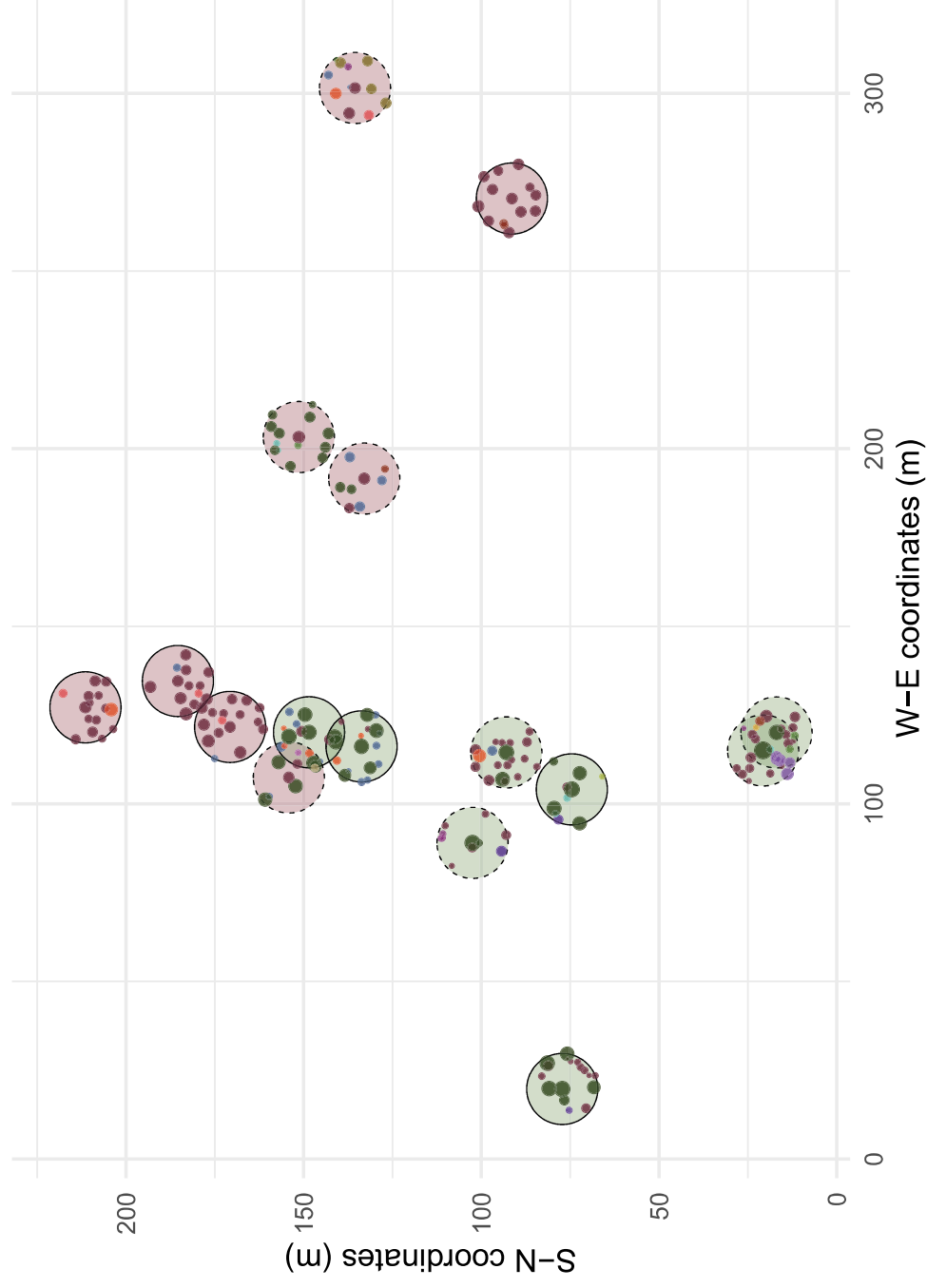
# **Triple-isotope analysis in tree-ring cellulose suggests only moderate effects of tree species mixture on the climate sensitivity of silver fir and Douglas-fir**

Justine Charlet de Sauvage, Kerstin Treydte, Matthias Saurer, Mathieu Lévesque

## **Supplementary Data**

Details of the sampling and maps of the study sites. The aerial images are from the Federal Office of Topography swisstopo. The coordinates of the target trees may be offset by several meters from the real position of the target trees due to GPS accuracy (Oregon 750t, Garmin, USA). The distances between target trees and neighbor trees were measured with an accuracy of 0.1 m with a Vertex 4 measuring device (Haglöf, Sweden).

# Sampling at the site Ges



## Species

- *Abies alba*
- *Acer pseudoplatanus*
- *Alnus glutinosa*
- *Betula pendula*
- *Castanea sativa*
- *Corylus avellana*
- *Fagus sylvatica*
- *Fraxinus excelsior*
- *Picea abies*
- *Pinus sylvestris*
- *Prunus avium*
- *Pseudotsuga menziesii*
- *Quercus petraea*
- *Salix species*
- *Sorbus aucuparia*
- *Taxus baccata*

## Species target

- Silver fir
- Douglas-fir

## Mixture condition

- mixed
- pure

## DBH (cm)

- 50
- 100



0 10 20 30m  
 Scale 1: 1000  
 Printed on 13.05.2024 14:45 MESZ  
<https://s.geo.admin.ch/c5fjb2bb6ruk>

GesA00\_pure

GesA01\_pure

GesA02\_pure

GesA10\_mixed

GesP01\_pure

GesP02\_pure

GesP17\_mixed

GesP03\_mixed

GesP04\_pure

GesP10\_mixed

GesP16\_mixed

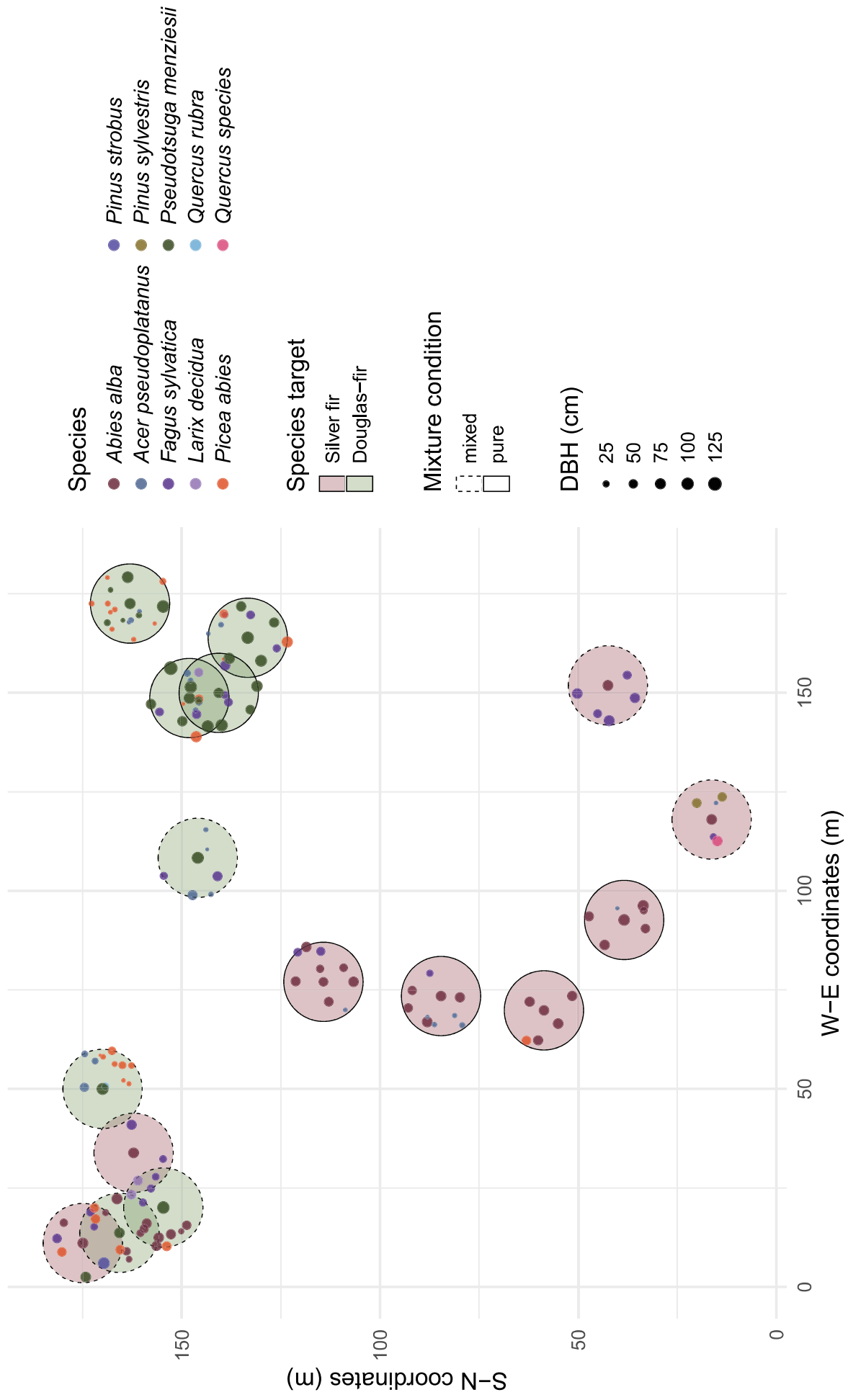
GesA09\_mixed

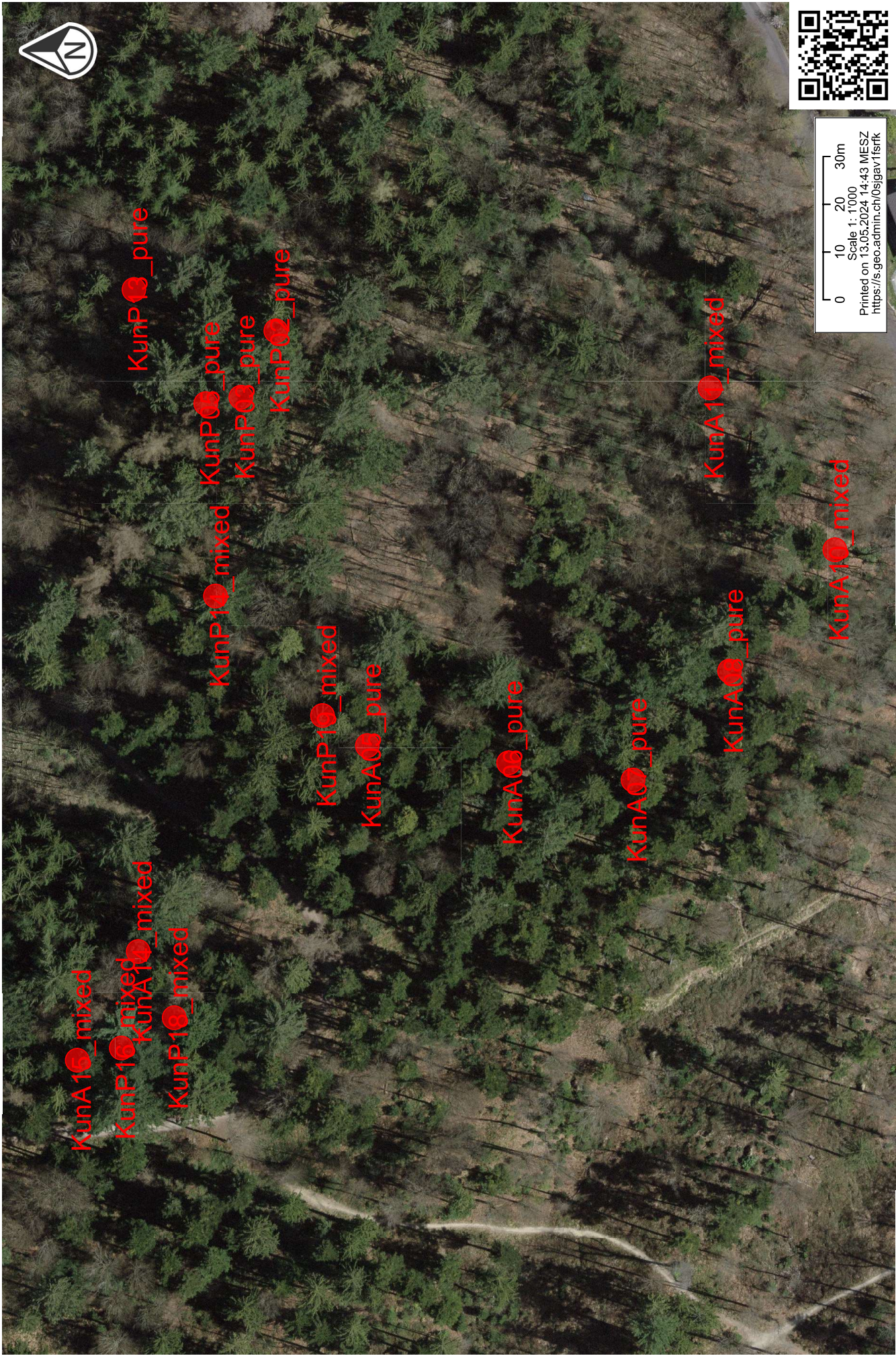
GesA08\_mixed

GesA12\_mixed

GesA07\_pure

# Sampling at the site Kun

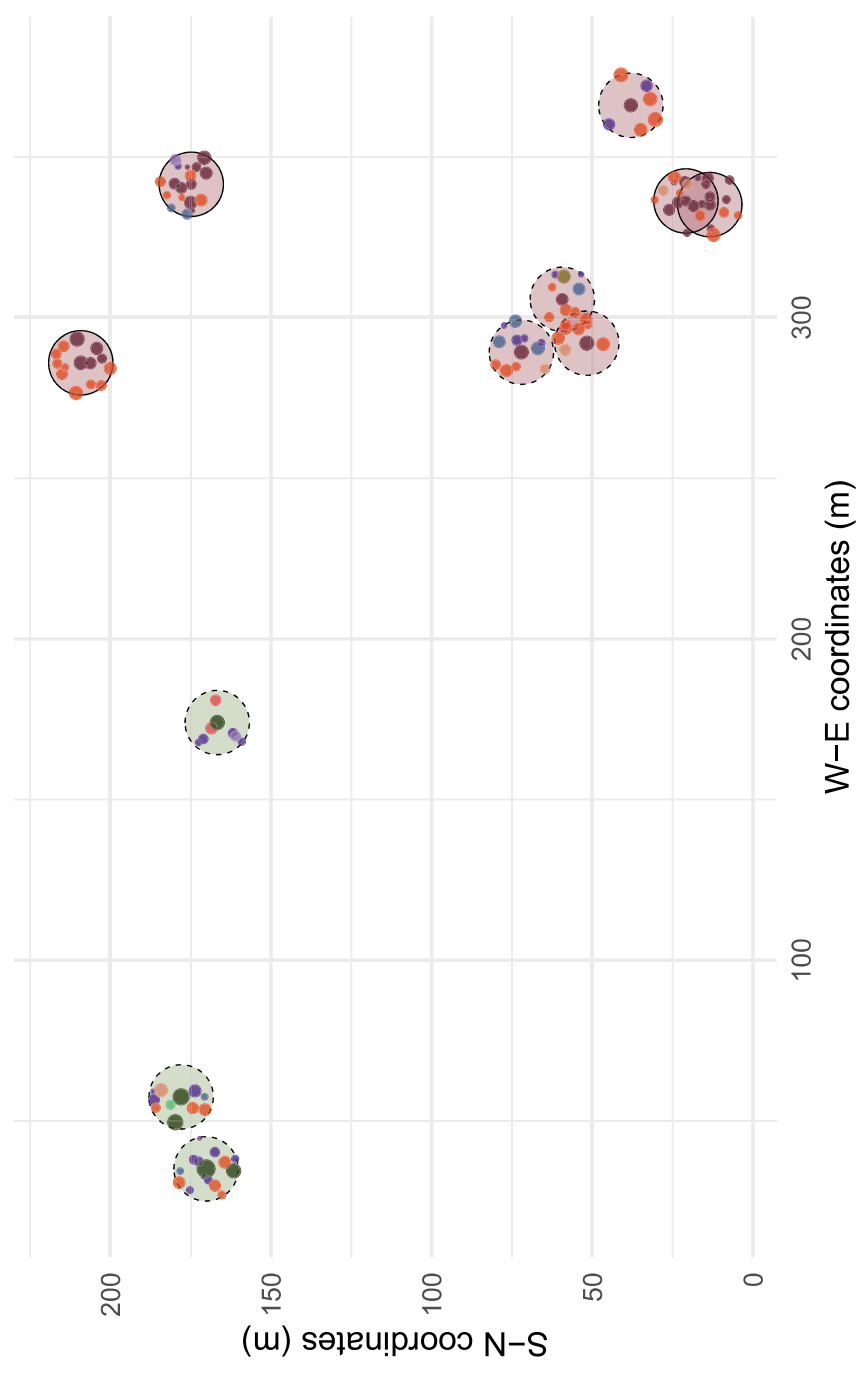




0 10 20 30m  
 Scale 1: 1'000  
 Printed on 13.05.2024 14:43 MESZ  
<https://s.geo.admin.ch/0s9gav1fsrk>



# Sampling at the site Som North



## Species

- *Abies alba*
- *Acer platanoides*
- *Acer pseudoplatanus*
- *Fagus sylvatica*
- *Larix decidua*
- *Picea abies*
- *Pinus sylvestris*
- *Pseudotsuga menziesii*
- *Quercus petraea*
- *Tilia cordata*

## Species target

- Silver fir
- Douglas-fir

## Mixture condition

- mixed
- pure

## DBH (cm)

- 25
- 50
- 75
- 100



0 10 20 30m  
 Scale 1: 1000  
 Printed on 13.05.2024 14:40 MESZ  
<https://s.geo.admin.ch/6149a86011>

SomA10\_pure

SomA20\_pure

SomP10\_mixed

SomP20\_mixed

SomP20\_mixed

SomA10\_mixed

SomA20\_mixed

SomA20\_mixed

SomA20\_mixed

SomA20\_pure

SomA20\_pure







0 10 20 30m  
Scale 1: 1'000  
Printed on 13.05.2024 14:41 MESZ  
<https://s.geo.admin.ch/9huaxh1mbpz>

