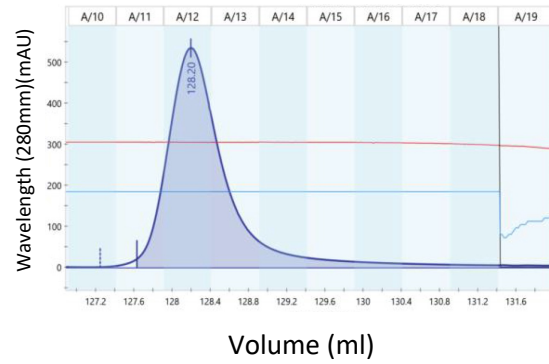


# Supplemental Figure 1: The Chromatography of JRR67, JRR28 and JRR44

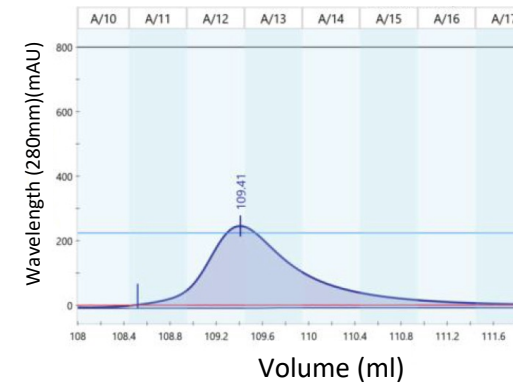
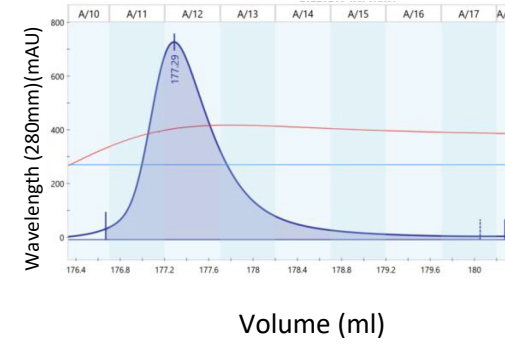
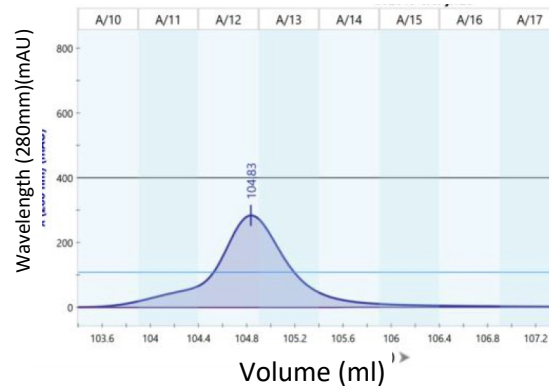
## Acidic elution

JRR67

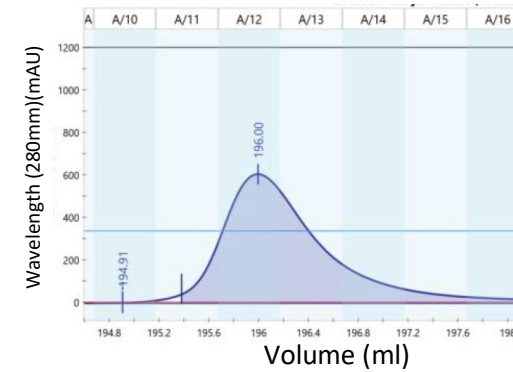
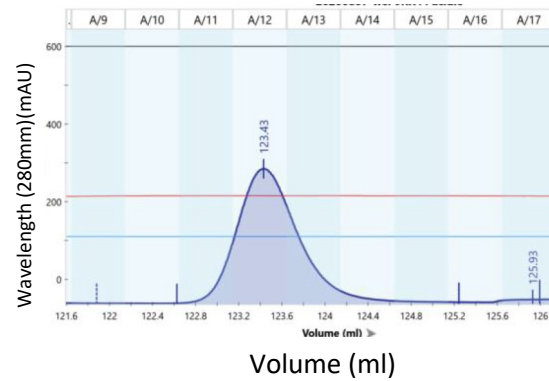


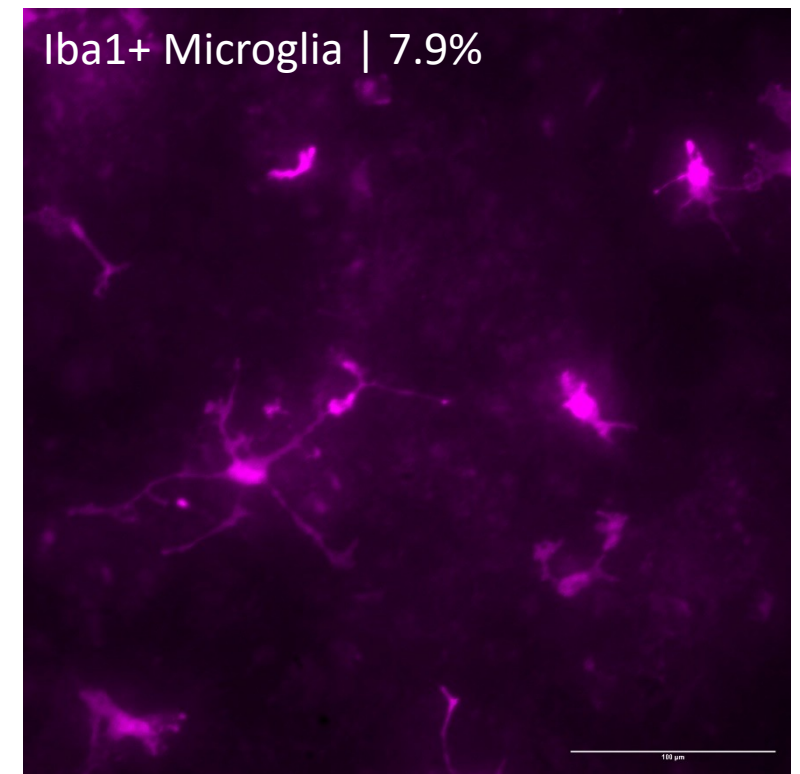
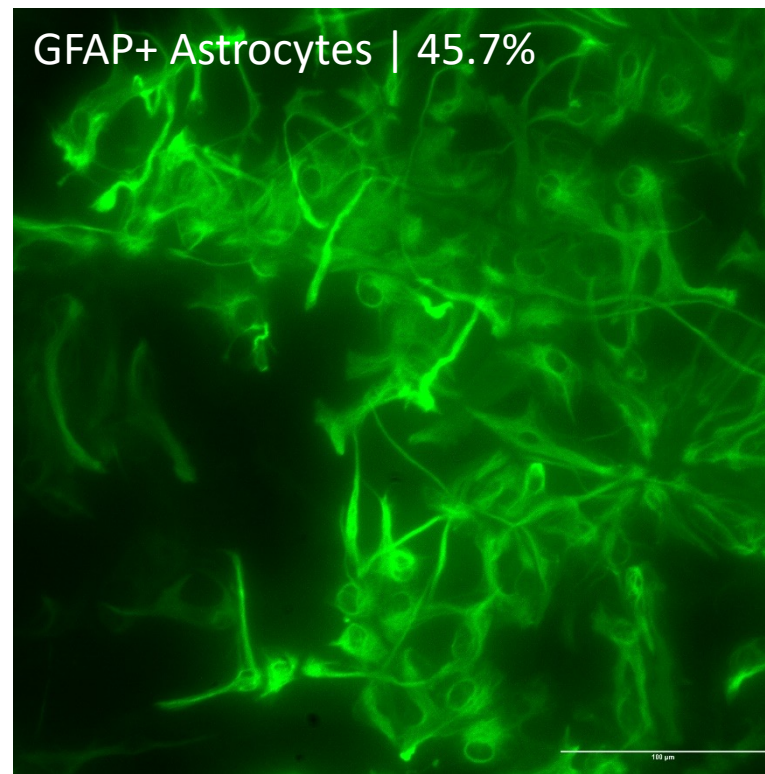
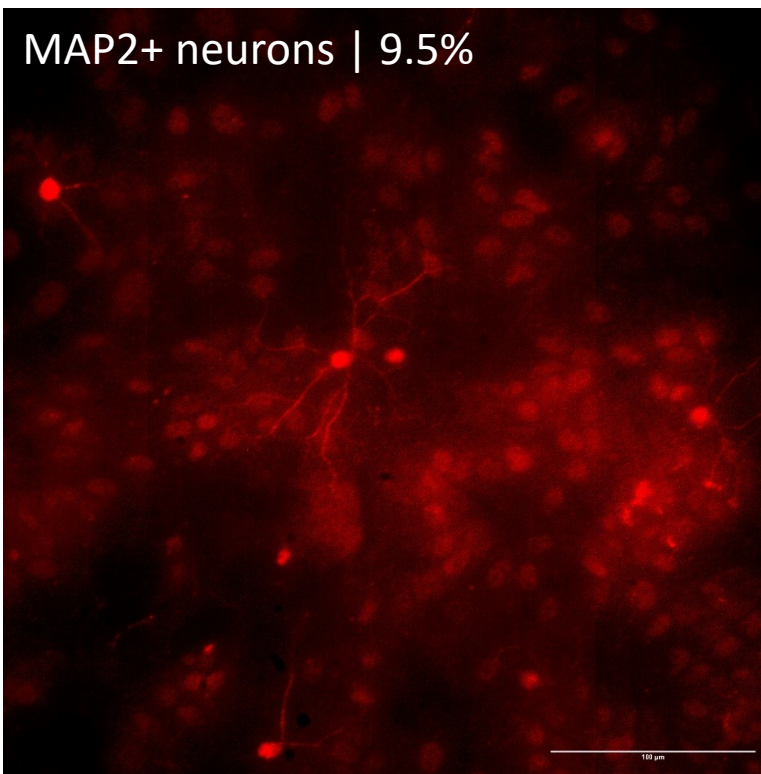
## Basic elution

JRR28



JRR44





SUPPLEMENTAL FIGURE 2. Mixed Cortical Cells were cultured and plated as described in PMID: 36715940. The cells were fixed and stained with MAP2 (Alexa Fluor 594) to identify neurons (Panel A), GFAP (Alexa Fluor 488) to identify astrocytes (Panel B), and Iba1 (Alexa Fluor 647) to identify microglia (Panel C). Images were taken on a Nikon A1R Inverted Confocal Microscope at 40x. The analysis to obtain culture percentages of Neurons, Astrocytes and Microglia was performed in FIJI (ImageJ) and are indicated at the bottom left of each panel. Scale bars (100uM) are included at the bottom right of each panel.