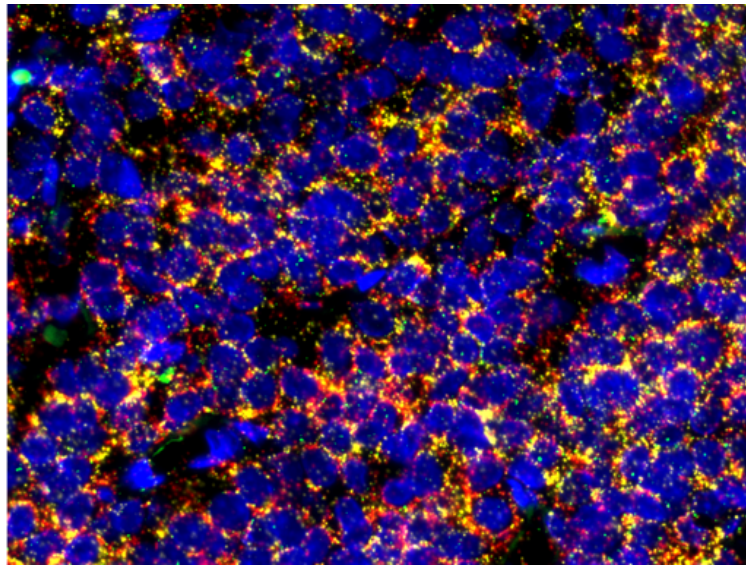
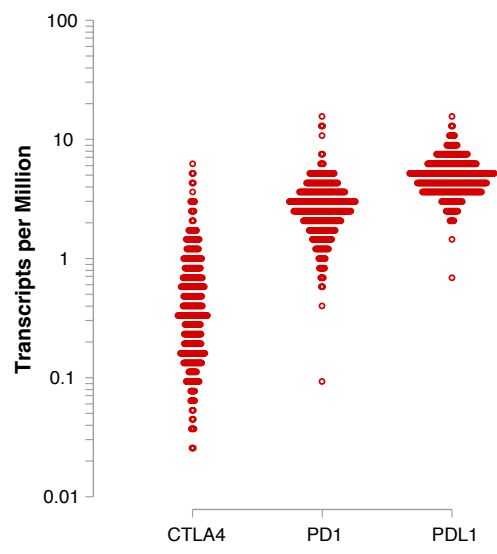


Supplementary Figure 1



Supplementary Figure 2



Supplementary Figure 3

Supplementary Table 1. Primers

Gene	Forward primer	Reverse primer	Product size
Rat PRL	5'-TCCCGGAGCTGTTTGACC-3'	5'-AGCCGCTTGTTTTGTTCCCTC-3'	334 bp
Rat GH	5'-ATCACTGAGTGGCGATGGCT-3'	5'-ATGTAGGCACGCTCGAACTCT-3'	199 bp
Rat GAPDH	5'-AGTGCCAGCCTCGTCTCATA-3'	5'-GATGGTGATGGGTTTCCCGT-3'	248 bp
Rat CTLA4	5'-ACGACATTCACAGTGAAGAAC-3'	5'-TCACAAATGGCCTTTCAGTTG-3'	428 bp
Mouse TSH beta	5'-GTAGTGGGTGGAGAAGAGT-3'	5'-CAGATGGTGGTGTGATG-3'	221 bp
Mouse LH beta	5'-TGGCCGCAGAGAATGAGTT-3'	5'-CCAGGGAGGCGGACAGA-3'	166 bp
Mouse POMC	5'-CGGGAGAGAAAAGCCGAGTCAC-3'	5'-TTCCACGTGTCAGGCCTAGT-3'	199 bp
Mouse CTLA-4	5'-GACATTCACAGAGAAGAATAC-3'	5'-CATGCTCCTTAGCTTTAAATT-3'	597 bp
Mouse GAPDH	5'-AGGTCATCCCAGAGCTGAAC-3'	5'-TCTCTTGCTCAGTGCCTTG-3'	397 bp

Supplementary Table 2. Tissue gene expression (in transcripts per million, *tpm*) for CTLA4, PD1, and PD-L1 according to the GTEx Portal database. Numbers represent the median (interquartile range). Anatomical locations with a median greater than 4 are highlighted.

Tissue	No.	CTLA4 <i>tpm</i>		PD1 <i>tpm</i>		PD-L1 <i>tpm</i>	
liver	226	0.14	0.2	0.27	0.3	0.92	0.6
ileum	187	4.93	19	4.10	11	2.65	0.7
thyroid	653	0.76	1.3	2.21	1.9	4.68	2.1
pituitary	283	0.36	0.6	2.75	1.6	4.81	2.4
testis	361	2.53	1.0	0.31	0.2	1.54	2.1
prostate	245	0.76	1.2	1.26	1.2	2.23	0.6
ovary	180	0.19	0.3	0.38	0.4	2.20	1.5
vagina	156	1.01	1.0	1.19	1.2	2.35	2.3
nerve	619	0.68	0.8	0.96	0.8	2.56	1.4
spleen	241	5.80	4.6	11.89	7.8	15.00	6.9
cervix	19	0.74	0.8	1.05	1.3	3.38	2.3
skin	1305	0.53	0.7	0.40	0.5	1.00	0.8
uterus	151	0.33	0.5	0.79	0.7	3.05	2.7
salivary	162	0.52	0.6	1.62	1.6	1.66	0.8
brain	2483	0.11	0.2	0.10	0.2	0.96	1.0
kidney	89	0.36	0.7	0.54	0.9	1.79	1.4
lung	578	4.35	3.8	3.25	2.5	24.56	26
breast	459	0.82	1.2	0.79	0.9	2.37	1.6
colon	779	0.60	1.1	0.61	0.8	1.41	1.0
stomach	539	0.53	0.7	1.24	1.2	1.32	1.1
esophagus	1445	0.29	0.7	0.61	0.7	2.02	1.6
bladder	21	0.58	1.5	1.05	2.4	1.88	0.9
fat	1204	0.77	0.9	1.35	1.4	3.23	2.6
pancreas	328	0.05	0.1	0.17	0.2	1.16	0.8
adrenal	258	0.11	0.2	0.36	0.3	1.20	0.8
blood	755	1.78	2.8	3.02	7.0	3.11	7.0
artery	1335	0.48	0.7	0.43	0.8	2.88	3.0
muscle	803	0.04	0.1	0.06	0.1	1.16	1.2
heart	861	0.15	0.2	2.61	4.9	4.28	3.8
spinal cord	159	0.24	0.4	0.41	0.5	1.12	1.1

Note: The GTEx Portal, now in its 8.2 version, has compiled the gene expression from 52 different anatomical locations from a large number of post-mortem donors. Not every donor contributes a sample from each of the 52 locations because samples that are not considered normal by pathologists or yield poor quality RNA are excluded. Results are expressed as number of mRNA transcripts per million transcripts (*tpm*).