

Supplementary Online Content

Michelson KA, Alpern ER, Remick KE, et al. Defining levels of US hospitals' pediatric capabilities. *JAMA Netw Open*. 2024;7(7):e2422196.

doi:10.1001/jamanetworkopen.2024.22196

eTable. Pediatric Capability Definitions

eFigure 1. Utilization of Pediatric Resources by Hospitals in Each Pediatric Level

eFigure 2. Classification of Hospitals Into Functional Levels in the Main Analysis and in Two Sensitivity Analyses

This supplementary material has been provided by the authors to give readers additional information about their work.

eTable. Pediatric Capability Definitions

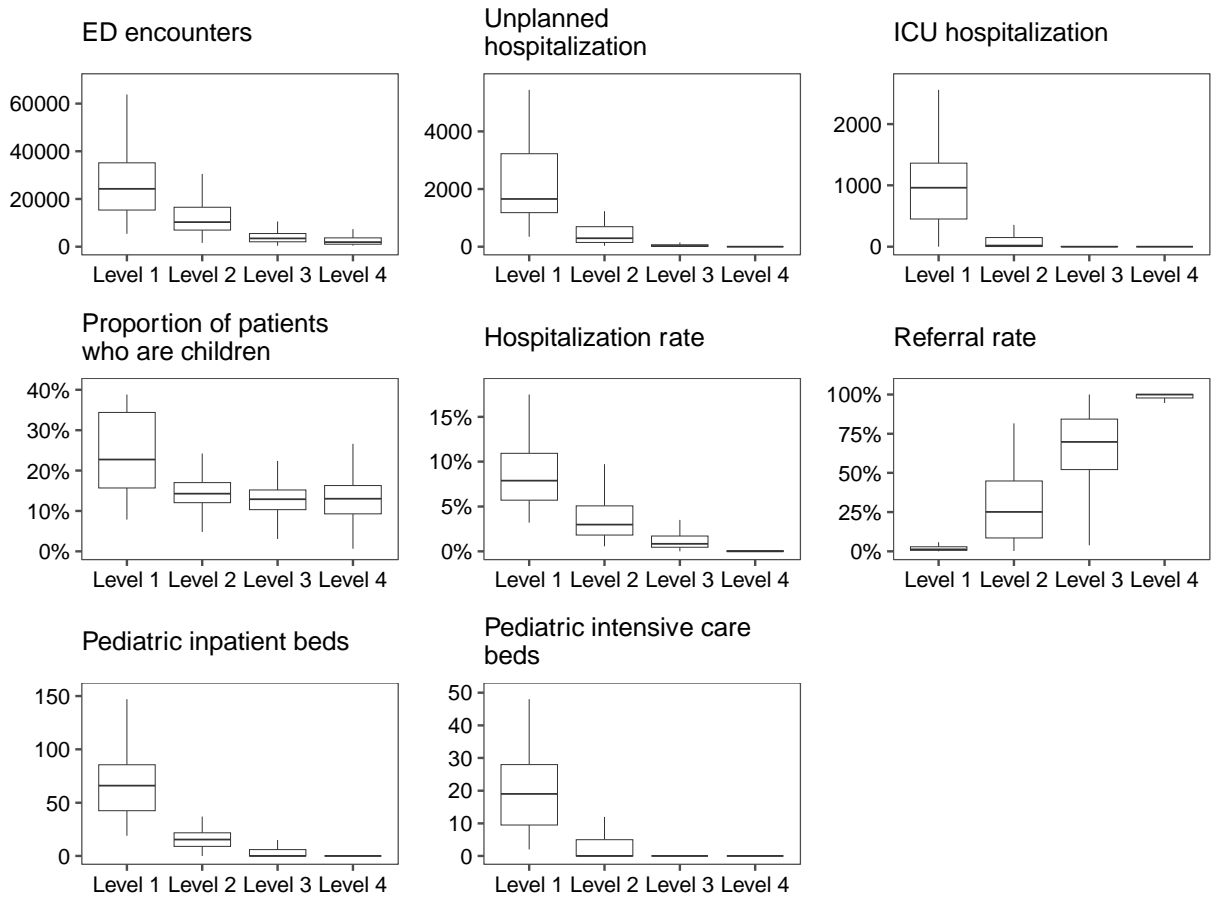
Codes ending in * indicate any code beginning with the given stem. In general, CPT codes only appear in patients discharged from the ED, so CPT codes were not given for surgeries routinely done for inpatients.

Capability	System	Codes
Appendectomy	ICD-10-PCS	0DBJ0ZX, 0DBJ0ZZ, 0DBJ3ZX, 0DBJ3ZZ, 0DBJ4ZX, 0DBJ4ZZ, 0DBJ7ZX, 0DBJ7ZZ, 0DBJ8ZX, 0DBJ8ZZ, 0DTJ0ZZ, 0DTJ4ZZ, 0DTJ7ZZ, 0DTJ8ZZ
	CPT	44950, 44960, 44970
Asthma hospitalization	CCS refined	J45*
Cystic fibrosis hospitalization	ICD-10-CM	E84*
Congenital heart disease hospitalization	ICD-10-CM	Q213*, Q220*, Q234*
Chemotherapy hospitalization	ICD-10-CM	Z511*
CT scan	CCS	177, 178, 179, 180
	CPT	70450, 70460, 70470, 70480, 70481, 70482, 70486, 70487, 70488, 70490, 70491, 70492, 70496, 70498, 71250, 71260, 71270, 71271, 71275, 72125, 72126, 72127, 72128, 72129, 72130, 72131, 72132, 72133, 72191, 72192, 72193, 72194, 73200, 73201, 73202, 73206, 73700, 73701, 73702, 73706, 74150, 74160, 74170, 74174, 74175, 74176, 74177, 74178, 7426*
	Revenue code	350, 351, 352, 359
Dialysis	ICD-10-PCS	3E1M39Z, 5A1D00Z, 5A1D60Z, 5A1D70Z, 5A1D80Z, 5A1D90Z
Diabetic ketoacidosis hospitalization	ICD-10-CM	E101, E1010, E1011, E111, E1110, E1111, E131, E1310, E1311
ECMO	ICD-10-PCS	5A1522F, 5A1522G, 5A1522H
	CPT	33946, 33947, 33948, 33949, 33951, 33952, 33953, 33954, 33955, 33956, 33957, 33958, 33959, 33962, 33963, 33964, 33966
Endoscopy	ICD-10-PCS	0DB18ZX, 0DB18ZZ, 0DB28ZX, 0DB28ZZ, 0DB38ZX, 0DB38ZZ, 0DB48ZX, 0DB48ZZ, 0DB58ZX, 0DB58ZZ, 0DB68ZX, 0DB68ZZ, 0DB78ZX, 0DB78ZZ, 0DB88ZX, 0DB88ZZ, 0DB98ZX, 0DB98ZZ, 0DBA8ZX, 0DBA8ZZ, 0DBB8ZX, 0DBB8ZZ, 0DBC8ZX, 0DBC8ZZ, 0DBE8ZX, 0DBE8ZZ, 0DBF8ZX, 0DBF8ZZ, 0DBG8ZX, 0DBG8ZZ, 0DBH8ZX, 0DBH8ZZ, 0DBJ8ZX, 0DBJ8ZZ, 0DBK8ZX, 0DBK8ZZ, 0DBL8ZX, 0DBL8ZZ, 0DBM8ZX, 0DBM8ZZ, 0DBN8ZX, 0DBN8ZZ
	CPT	43231, 43232, 43233, 43235, 43236, 43237, 43238, 43239, 43240, 43241, 43242, 43243, 43244, 43245, 43246, 43247, 43248, 43249, 43235, 43236, 43237, 43238, 43239, 43250, 43251, 43252, 45378, 45379,

		45380, 45381, 45382, 45384, 45385, 45386, 45388, 45389, 45390, 45391, 45392, 45393, 45395, 45397, 45398
Fontan surgery	ICD-10-PCS	061007P, 061007Q, 061007R, 061009P, 061009Q, 061009R, 06100AP, 06100AQ, 06100AR, 06100JP, 06100JQ, 06100JR, 06100KP, 06100KQ, 06100KR, 06100ZP, 06100ZQ, 06100ZR
Gastrostomy	CCS	71
Inflammatory bowel disease hospitalization	ICD-10-CM	K50*, K51*
Simple laceration repair	CPT	12001, 12002, 12004, 12005, 12006, 12007, 12011, 12013, 12014, 12015, 12016, 12017, 12018, 12020, 12021
	ICD-10-PCS	0JQ00ZZ, 0JQ03ZZ, 0JQ10ZZ, 0JQ13ZZ, 0JQ40ZZ, 0JQ43ZZ, 0JQ50ZZ, 0JQ53ZZ, 0JQ60ZZ, 0JQ63ZZ, 0JQ70ZZ, 0JQ73ZZ, 0JQ80ZZ, 0JQ83ZZ, 0JQ90ZZ, 0JQ93ZZ, 0JQB0ZZ, 0JQB3ZZ, 0JQC0ZZ, 0JQC3ZZ, 0JQD0ZZ, 0JQD3ZZ, 0JQF0ZZ, 0JQF3ZZ, 0JQG0ZZ, 0JQG3ZZ, 0JQH0ZZ, 0JQH3ZZ, 0JQJ0ZZ, 0JQJ3ZZ, 0JQK0ZZ, 0JQK3ZZ, 0JQL0ZZ, 0JQL3ZZ, 0JQM0ZZ, 0JQM3ZZ, 0JQN0ZZ, 0JQN3ZZ, 0JQP0ZZ, 0JQP3ZZ, 0JQQ0ZZ, 0JQQ3ZZ, 0JQR0ZZ, 0JQR3ZZ
Lumbar puncture	ICD-10-PCS	009U3ZX, 009U3ZZ
	CPT	62270
Mechanical ventilation	ICD-10-PCS	5A1935Z, 5A1945Z, 5A1955Z
	CPT	94002, 94003, 94004, 94005
Pneumonia hospitalization	CCS refined	J13*, J14*, J15*, J16*, J17*, J18*
Urea cycle defect hospitalization	ICD-10-CM	E722*
Closed reduction of radius	ICD-10-PCS	0PSHXZZ, 0PSJXZZ
	CPT	25560, 25565, 25574, 25575, 25600, 25605, 25606, 25607, 25608, 25609
Sickle cell anemia hospitalization	ICD-10-CM	D57*
Organ transplant	CCS	105, 176
Cerebral ventricular shunt	ICD-10-PCS	009600Z, 009630Z, 009640Z
Ventricular septal defect surgery	ICD-10-PCS	02QM*

* Chosen to represent complex congenital heart disease: hypoplastic left heart, pulmonary atresia, and tetralogy of Fallot only

eFigure 1. Utilization of Pediatric Resources by Hospitals in Each Pediatric Level



eFigure 2. Classification of Hospitals Into Functional Levels in the Main Analysis and in Two Sensitivity Analyses
 Percentages of the hospitals in each level are shown in the heat map (blue: ≥75%, green: 50 to <75%, yellow: 25 to <50%, orange: >0 to <25%, white: 0%).

