

Jang et al. (Supplementary Figure 2)

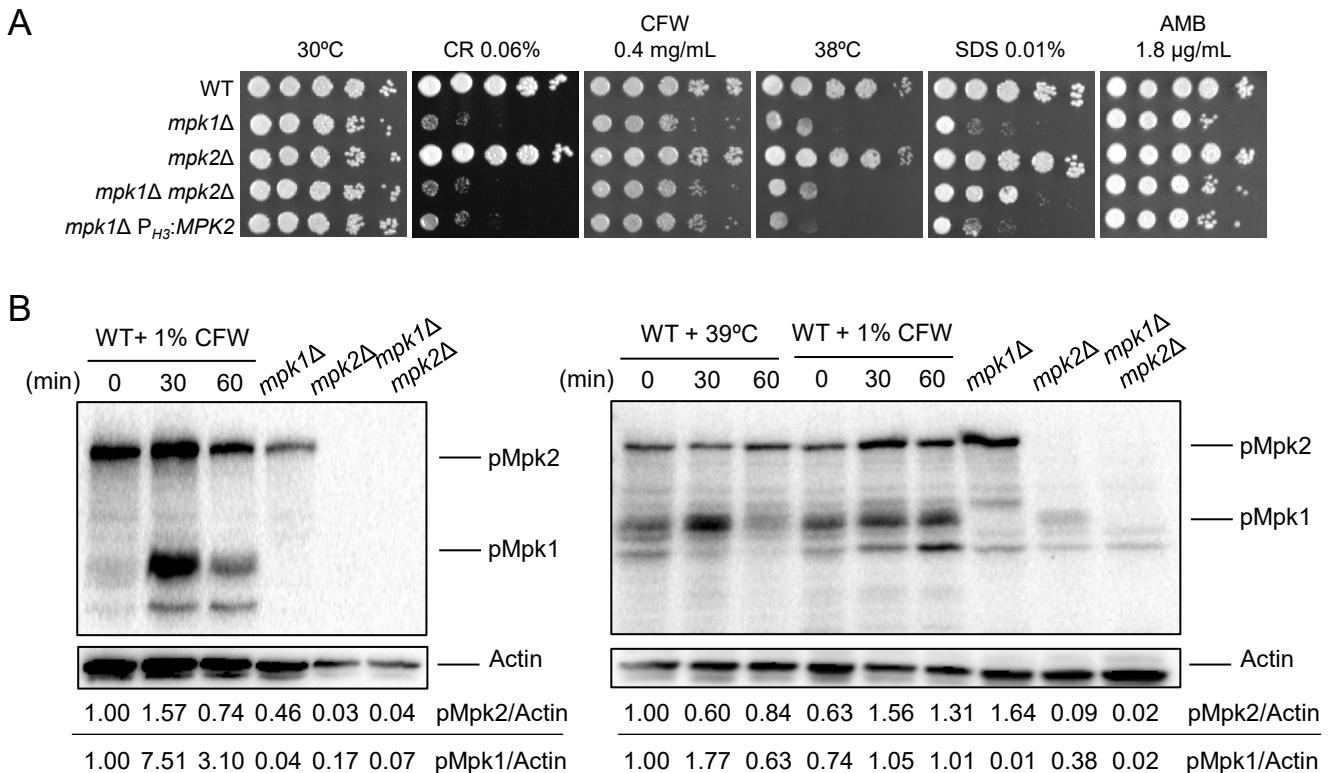


Figure S2. Cell wall stress phosphorylates Mpk1 and Mpk2, with Mpk2's overexpression able to partially compensate for *mpk1Δ*. A) Wild-type, *mpk1Δ*, *mpk2Δ*, *mpk1Δ mpk2Δ* (YSB8246), and *mpk1Δ P_{H3}:MPK2* (YSB9576) were cultured and added 0.06% CR, 0.4 mg/mL CFW, 5 μ g/mL FCZ, at 38°C, 0.01% SDS, and 1.8 μ g/mL AMB, then repeated the spotting experiments. The used *mpk1Δ mpk2Δ* and *mpk1Δ P_{H3}:MPK2* are independent additional strains from Fig. 3C. (B) After exposing wild-type strains to 39°C or 1% CFW for 0, 30, and 60 minutes, the phosphorylation of Mpk1 and Mpk2 was assessed. Phosphorylation of both Mpk1 and Mpk2 was detected simultaneously using an anti phospho-p42/44 antibody (Cell Signaling, #4370), and *mpk1Δ*, *mpk2Δ*, and *mpk1Δ mpk2Δ* were used as controls to confirm the identity of each protein band. Actin was used as the loading control.