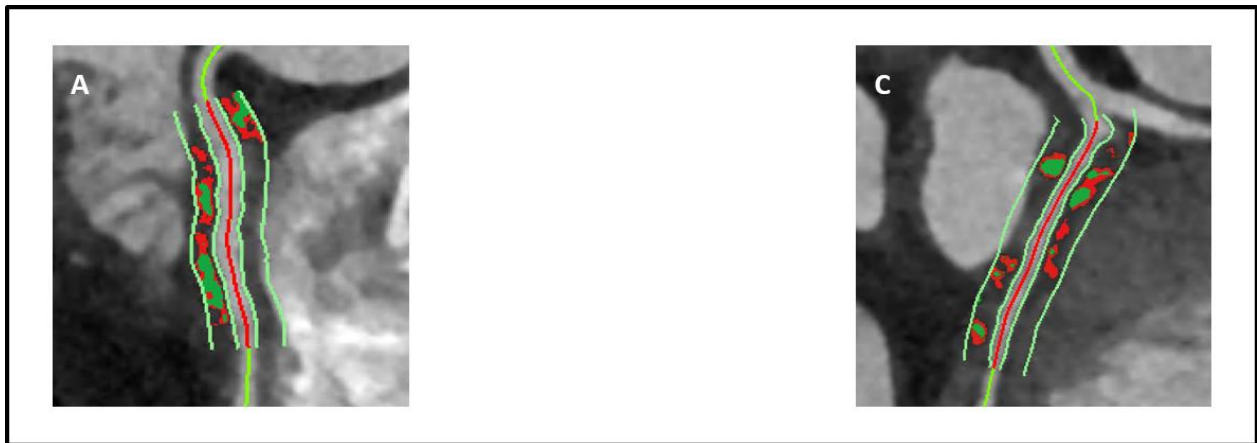


Supplemental Figure 1. Epicardial adipose tissue (EAT) dispersion calculation on a contrast-enhanced CT scan around the right coronary artery (RCA). The EAT was measured 4 mm around the coronary arteries, starting 1 cm from the origin of the RCA (A) and directly from the origin of the LAD (B) and LCX (C) over a distance of 4 cm. Voxels within the included volume were segmented in a low (voxels in green between -195 and -45 HU) and high (voxels in red between -45 and -15 HU) threshold LA EAT compartment.



Supplemental Figure 2. Study flow diagram. A total of 271 patients undergoing a first pulmonary vein isolation (PVI) were consecutively included. 35 patients with missing informed consent, 14 patients with previous PVI and 10 patients with LA ablation in addition to PVI or a combined intervention other than PVI were excluded. After one year follow-up, 136 patients had no AF recurrence, while 76 patients had AF recurrence.

