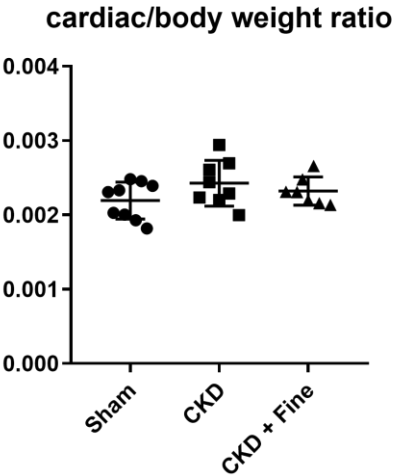


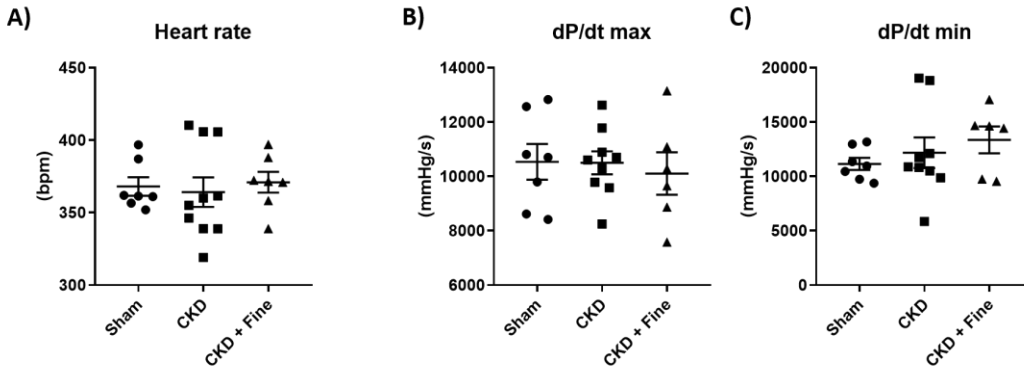
Supplemental Material

Figure S1. Heart/body weight ratio in CKD rats after 12 weeks (Protocol 2).



CKD: chronic kidney disease, Fine: finerenone. ANOVA was used for statical analysis, n = 7-9.

Figure S2. Hemodynamic parameters in CKD after two months of finerenone treatment.



heart rate (A), dP/dt max (B), and dP/dt min (C). CKD: chronic kidney disease, Fine: finerenone. ANOVA was used for statistical analysis, n = 6-8. *p < 0.05, **p < 0.001, ***p < 0.0001.